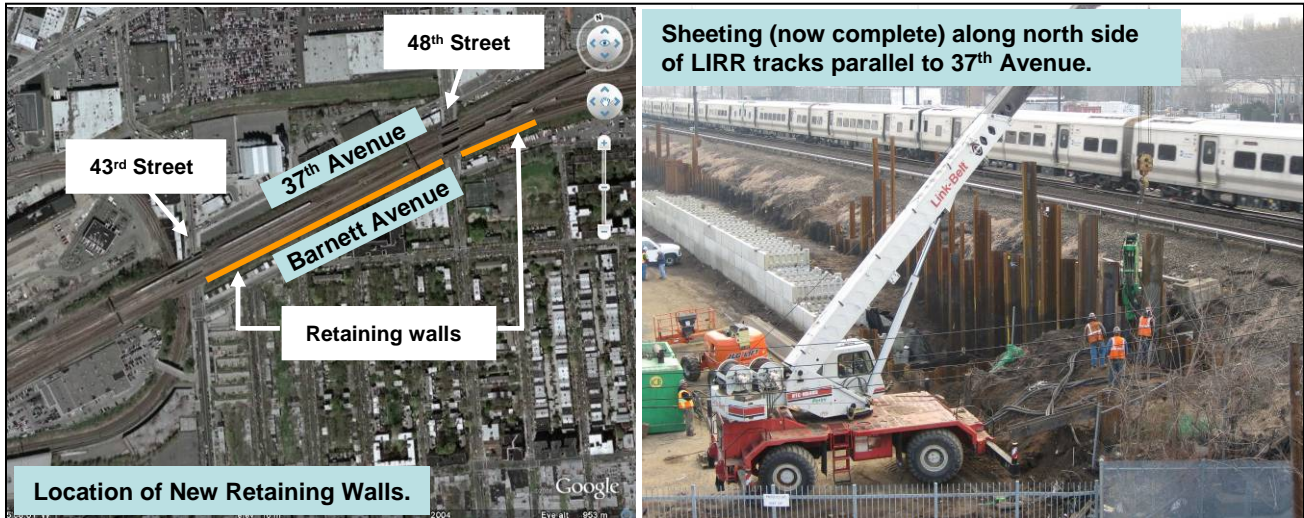


SURFACE CONSTRUCTION NOTIFICATION

Harold Structures Stage 1



As we have advised you previously, as part of the East Side Access Project, the Harold Structures – Stage I contract currently underway will have construction along the railroad right-of-way in proximity to Sunnyside Gardens. Construction of a new retaining wall along the right of way between 43rd Street and 48th Street on the south side of the LIRR tracks and to widen the 43rd Street and 48th Street railroad bridges is scheduled to begin in May 2009.

Immediate Upcoming Work:

The early stage of construction requires the installation of sheeting. This work is scheduled to begin in May 2009. This will be followed by excavation behind the new sheeting and installation of modular wall units for the retaining wall. The sheeting installation work will be performed on weekdays. Work hours for the sheet piling will be from 7:00AM – 4:00PM.

What To Expect:

During this work, residents within the neighborhood will hear construction noise from the sheet piling installation and train horns and whistles. The Federal Railroad Administration (FRA) regulations require audible warnings from trains if workers are on or near the tracks.

Regular noise, vibration and dust monitoring will take place to make sure that construction impacts are kept to a minimum. We are committed to completing this work with the least amount of disruption to you and your community. We appreciate your patience and understanding as we progress this project.

Traffic Impacts:

- For the safety of vehicles and pedestrians, the parking lane closure on 43rd Street will continue and the east sidewalk of 43rd Street will be closed and a temporary sidewalk created for approximately 9 months
- No MTA or contractor parking will be allowed on residential streets
- All equipment and materials staging and storage will be along the railroad right-of-way

Should you have any questions, please contact Lisa Blugh-Willis at (212) 967-0299.