

## Harold Structures - Stage I

The MTACC'S East Side Access project, which will bring Long Island Rail Road (LIRR) trains into a new station under Grand Central Terminal, is currently under construction. The new connection will increase the LIRR's capacity into Manhattan and dramatically shorten travel time for Long Island and eastern Queens commuters traveling to the east side of Manhattan.

The Harold Structures – Stage I contract will involve the first phase of construction to reconfigure railroad tracks and signals within Sunnyside Yard. The contract includes, along with new tracks, signals and communications, the construction of retaining walls, bridges, new catenary towers, a substation, and Harold Access Bridge with all the associated foundations and utilities. These improvements will increase railroad capacity within Sunnyside Yard, and make room for the new and expanded LIRR service.

The construction progress status of this contract is provided below.

### Completed Construction Activities:

- Excavation of 40 catenary and signal tower foundations
- Installation of new power and communications duct banks within Sunnyside Yard
- Installation of vertical supports and bridge footings for the new Harold Access Bridge
- Installation of the new retaining wall

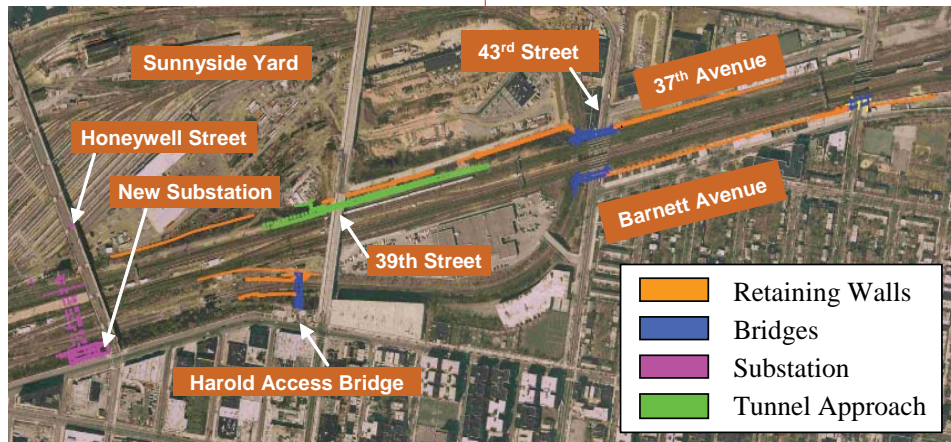


Hand Digging for Catenary Foundation.

along the railroad right-of-way parallel to 37th Avenue

### Construction Activities Underway:

- Continue hand digging for catenary



foundations

- Continue survey throughout site
- Continue Harold Access Bridge construction
- Continue installation of four retaining walls between Honeywell Street and 43rd Street within Sunnyside Yard
- Continue installation of duct banks within Sunnyside Yard

### Upcoming Construction Activities (May 2009 - December 2009):

- Installation of track monitoring equipment
- Construction of retaining walls between 43rd Street and 48th Street on the south side of railroad right-of-way (adjacent to these streets)
- Construction of foundations for 43rd & 48th Street bridge expansions
- Micro tunneling to create new tunnels for various utility lines within Sunnyside Yard
- Relocation and upgrade to various utilities under 43rd Street
- Demolition of MTA buildings on the west side of 43rd Street by 37th Avenue

The East Side Access team, along with LIRR, Amtrak and several utility companies, are dedicated to completing the required construction as quickly as possible with the least amount of inconvenience to residents and businesses in the neighborhood.

East Side Access is committed to maintaining a work site that is safe and clean. We appreciate the patience and understanding of the residents of this neighborhood as we progress the contract. While dust, noise and heavy equipment are common elements of construction, we have taken

several measures to minimize and mitigate these impacts as much as possible.

### Horn Blowing:

LIRR is aware of the nuisance that horn blowing causes to the residents in the immediate and surrounding areas. However, Federal Railroad Administration (FRA) regulations require audible warnings from trains when workers are on or near the tracks to insure the safety for workers as well as commuters.

### Work Schedule:

The typical construction schedule will be as follows:

Days: Monday – Friday  
(Saturday and Sundays on limited occasion)  
Time: 24 hours a day

### Temporary Lane Closures:

At times during this project, it will be necessary for the contractor to occupy traffic lanes in order to conduct construction activities. Currently portions of parking lanes on 43rd Street and at the intersection of Skillman Avenue and Honeywell Street remain closed. Additional temporary vehicular lane and sidewalk closures are expected on 43rd and 48th Streets.