

Fordham Road – Pelham Parkway Select Bus Service Project



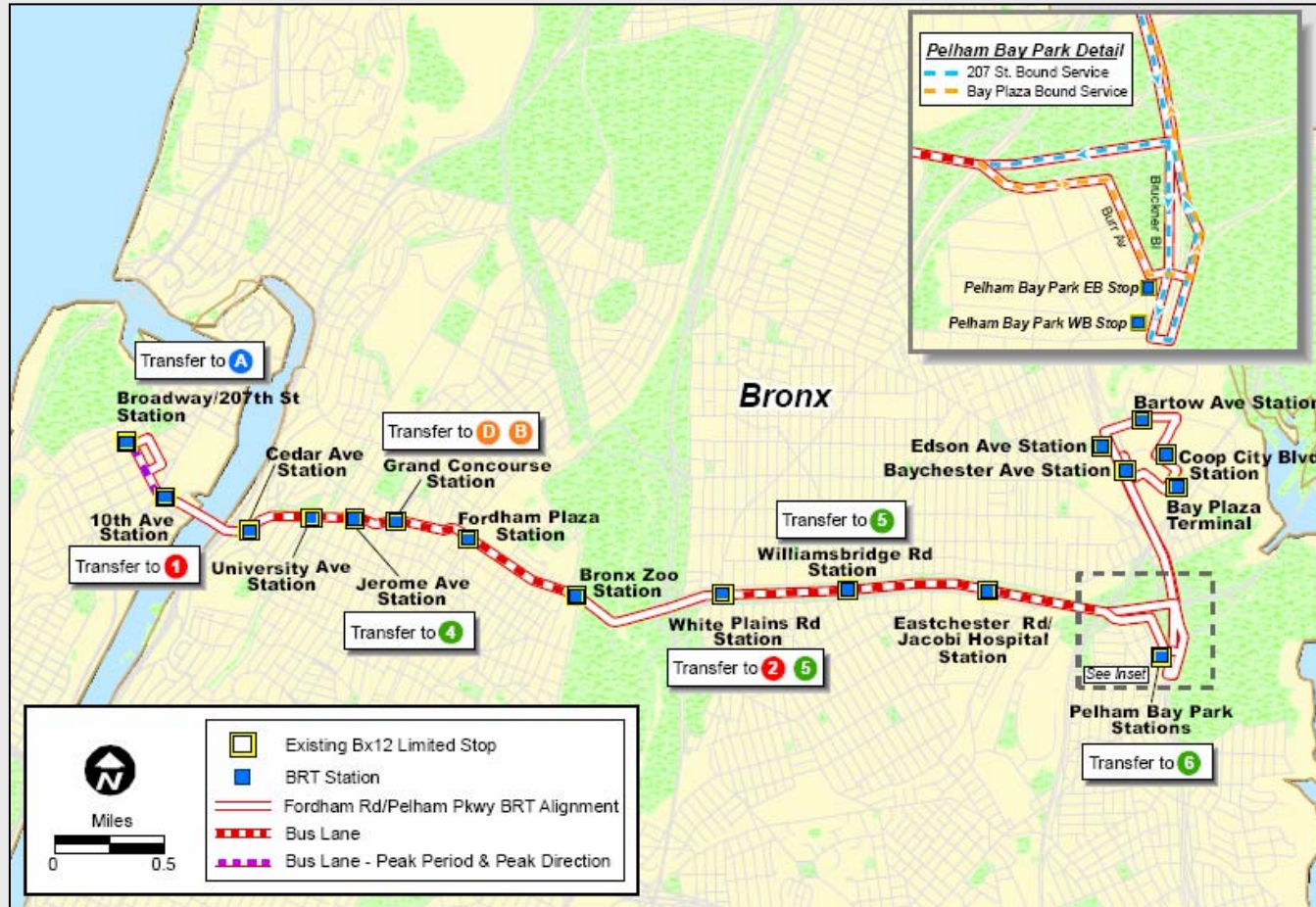
Background: SBS Feasibility Study

- Initial SBS study focused on improving existing bus routes in each borough
- Fordham Road - Pelham Parkway (Bx12) selected as the Bronx corridor



BRT corridors as of Spring 2007

Fordham Road-Pelham Parkway SBS Corridor Map



Enhancements to Original Plan

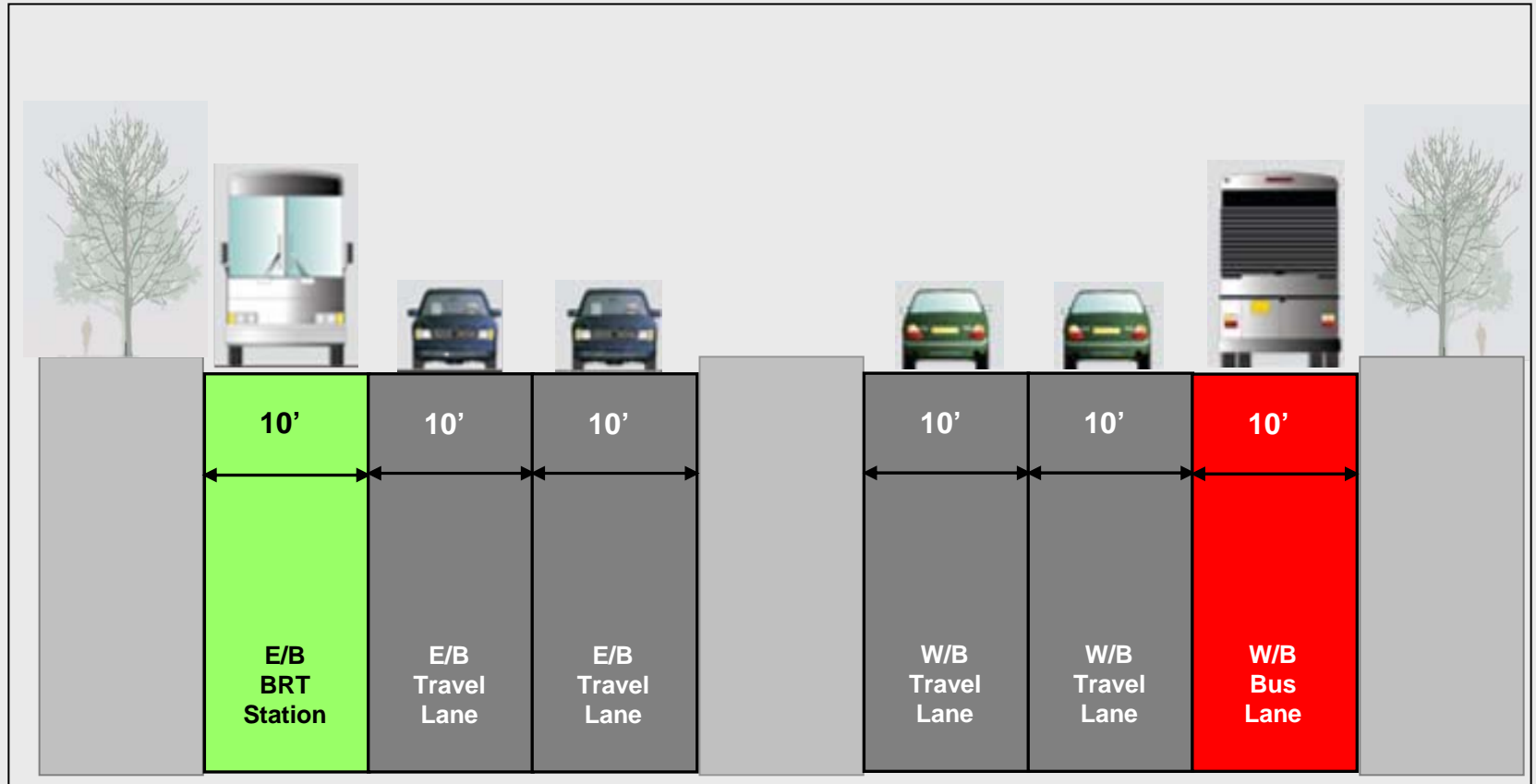
- Fare collection improvements: off-board fare collection with fare inspection on-board
- Signal improvements: corridor signal optimization and Transit Signal Priority

Fordham Road-Pelham Parkway SBS

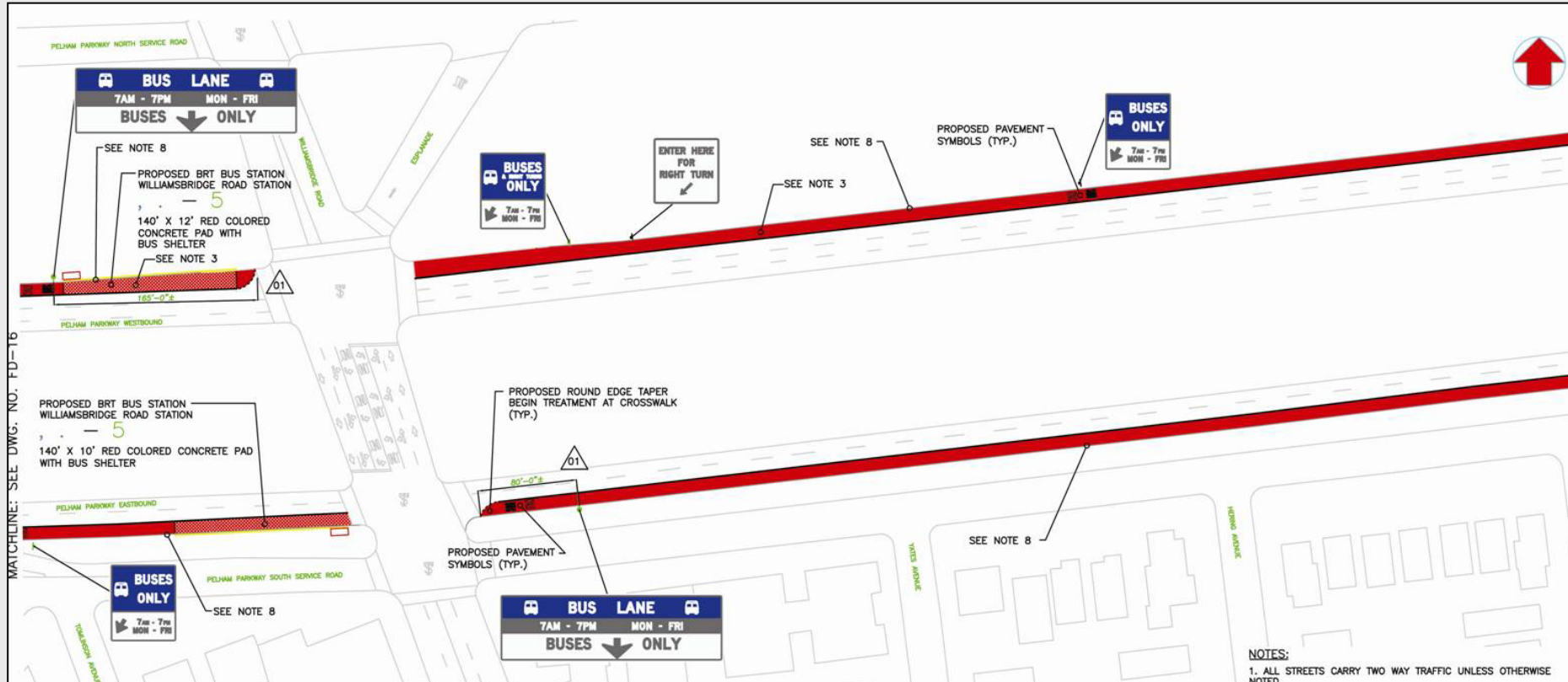
Key Features

- Follows route of the existing Bx12 Limited from the Inwood neighborhood of Manhattan to Bay Plaza in the Bronx
- Enhanced and extended bus lanes on Fordham Road and Pelham Parkway
 - Fordham Road bus lanes operate from 7:00am to 7:00pm Monday through Friday (with delivery window)
 - 7:00am to 7:00pm bus lanes will be added on Pelham Parkway, and further enhanced as part of the reconstruction project
 - Red bus lanes and improved signs
- Enhanced NYPD enforcement (general and BRT related)
- BRT stations with new Cemusa shelters
- Transfer opportunities:
 - Subway lines **1 2 4 5 6 A B D** (critical East-West transit link)
 - All Metro North Lines
- Increased frequency and hours of service on BRT
- Transit Signal Priority (TSP) and corridor signal optimization
- Off-board fare collection

Typical Cross Section Fordham Road SBS Corridor

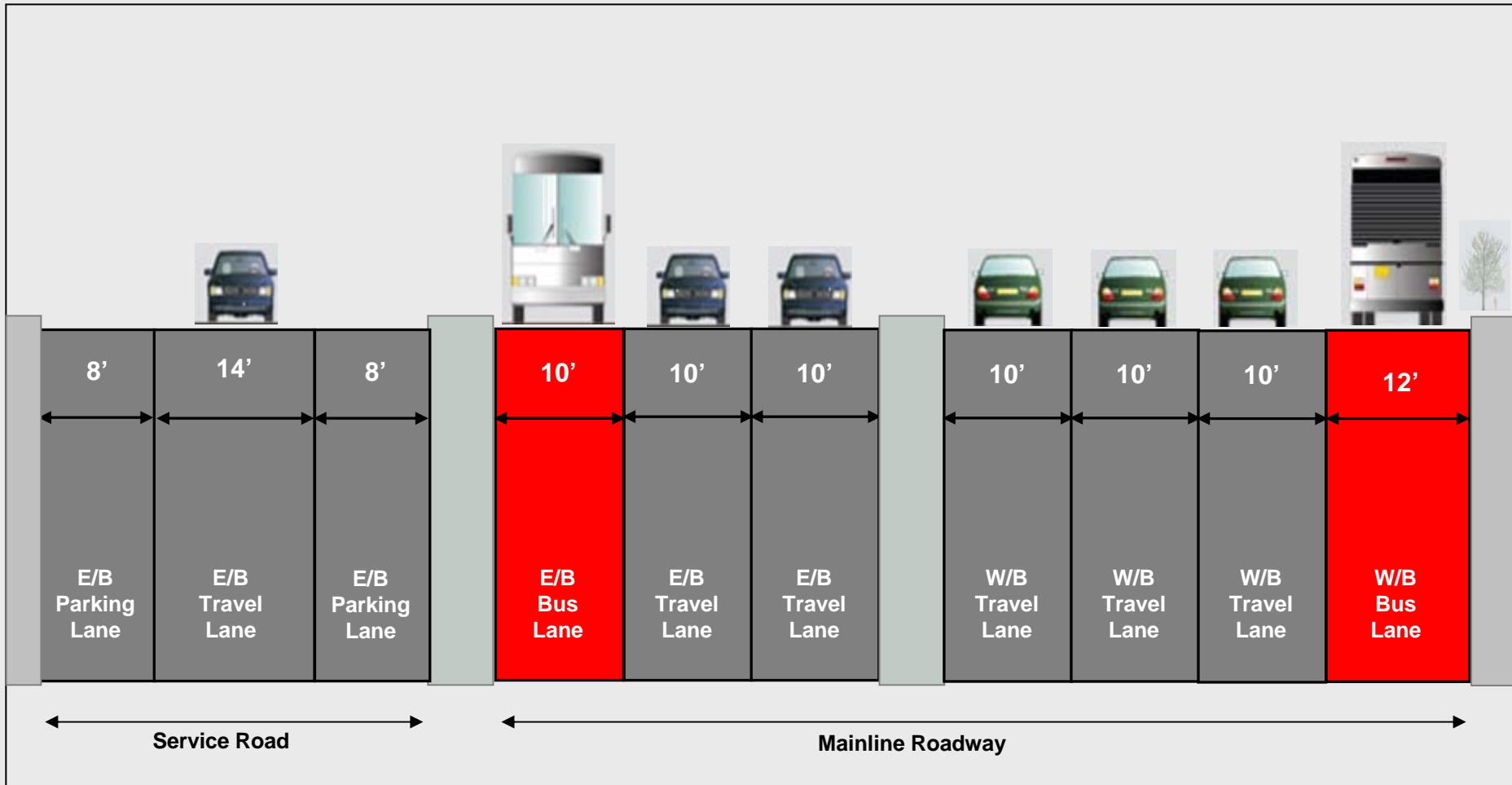


Pelham Parkway SBS Typical Intersection Plan



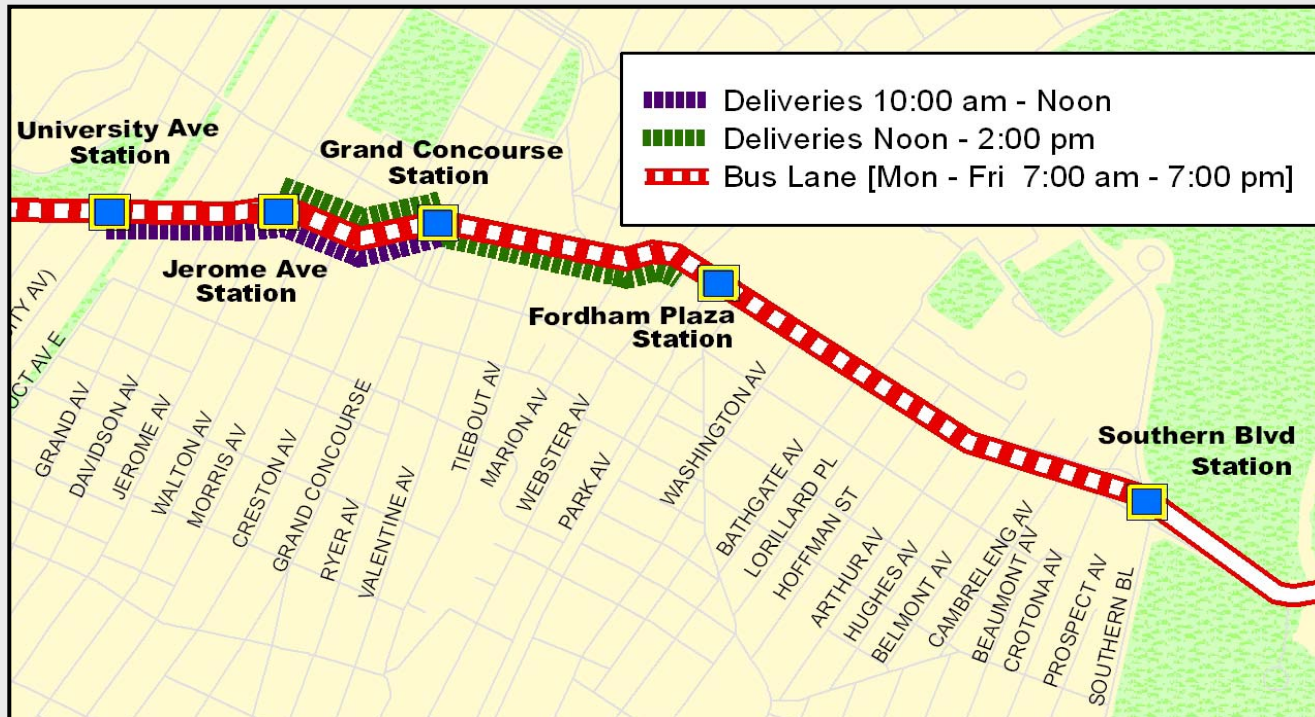
- Service improvements will be implemented in Spring 2008
- Major physical changes (bus lane markings, full SBS stations) will be implemented as part of Pelham Parkway reconstruction project

Typical Cross Section of Pelham Parkway SBS Corridor

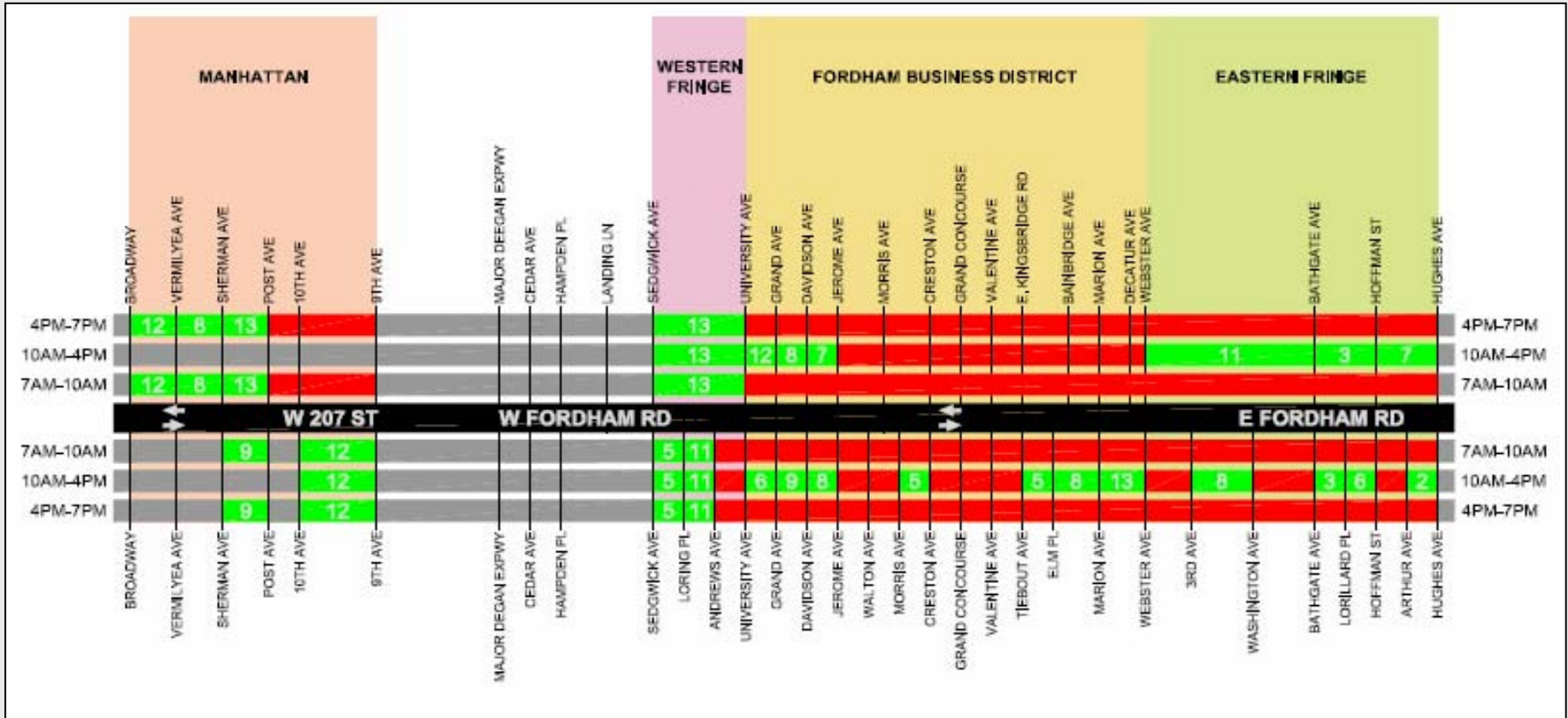


Fordham Road Parking Midday Delivery Window

- Delivery hours on the *south* side of the street:
 - University Avenue to Grand Concourse, 10:00 a.m. to Noon
 - Grand Concourse to Webster Road, Noon to 2:00 p.m.
- Delivery hours on the *north* side of the street:
 - Jerome Ave to Grand Concourse, Noon to 2:00 p.m.
 - Considering extension of delivery area on north side of street
- Delivery zones and additional parking areas will be established on certain side streets.



Fordham Road Parking Changes

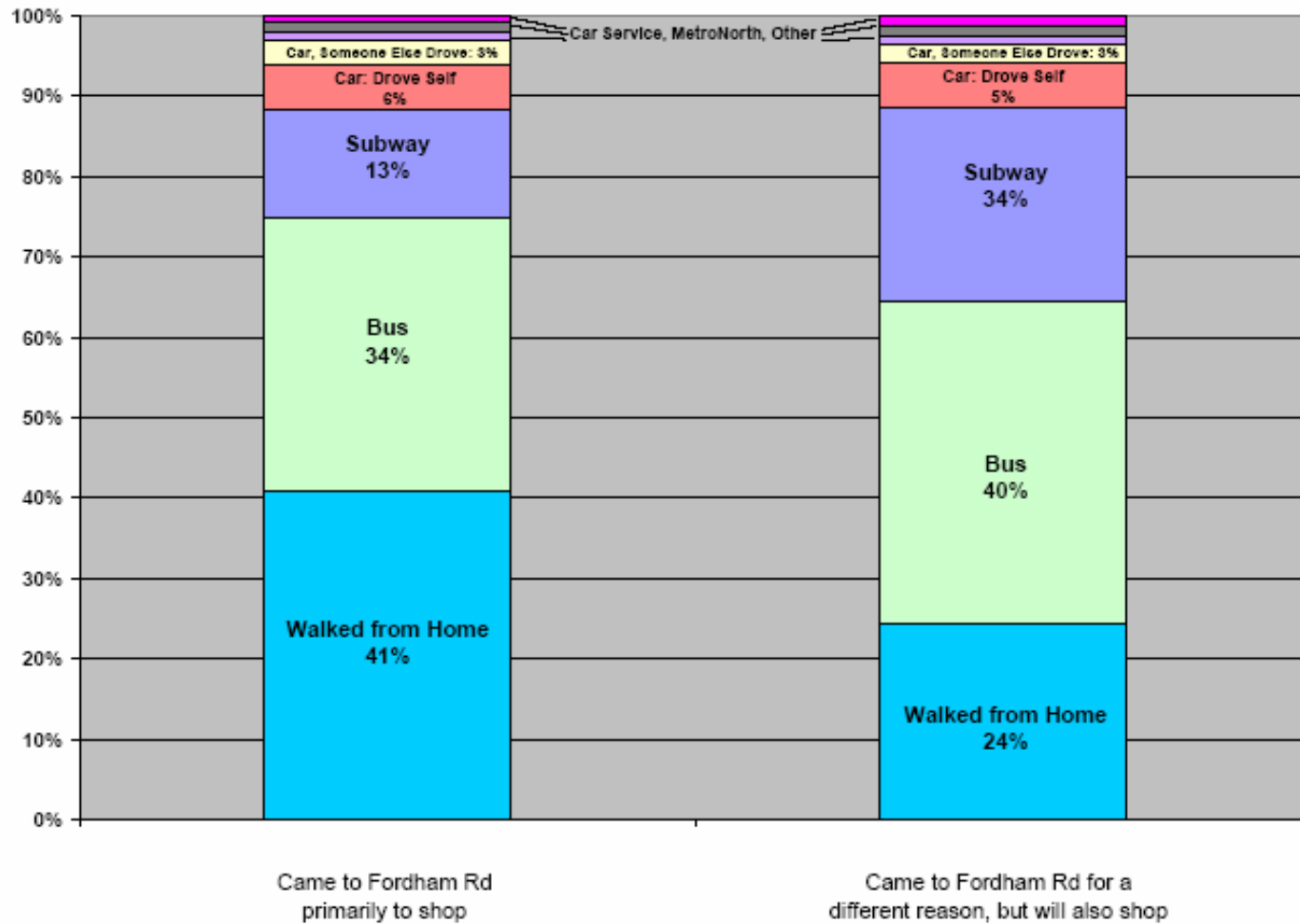


LEGEND

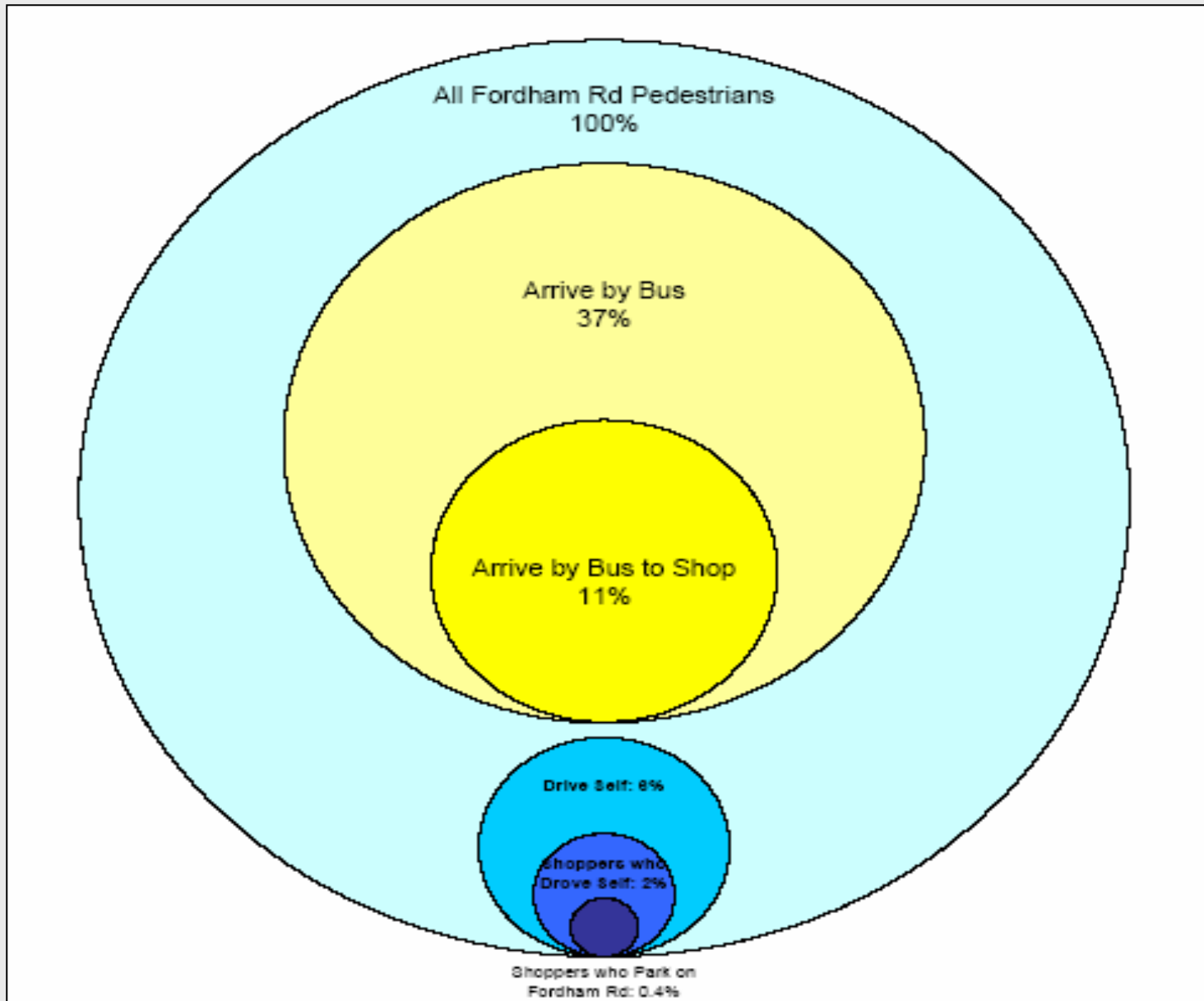
- No operational treatment. Parking not affected by BRT.
- Parking currently not permitted.
- 9 Parking affected by BRT. No. of spaces to be removed.

Survey of Fordham Road Shoppers

How did you get to Fordham Road today?

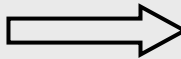


Survey of Fordham Road Shoppers



Overall SBS Benefits

- BRT travel time improvements (compared to Bx12 Limited):
 - 10% initial improvement
 - Should increase to as much as 20% as BRT features are refined
- Reliability improvements due to more predictable travel times
- Signal optimization and improved traffic operations for all users
- Improved access to key destinations
 - Jacobi Medical Center
 - Fordham Road shopping / commercial district
 - Subway Lines **1 2 4 5 6 A B D** and Metro North
 - Bronx Zoo
 - New York Botanical Gardens
 - Fordham University
- Improved running times for local Fordham Road buses
- Streetscape improvements
- Seven day BRT service



Bus Route	Existing Weekday Ridership (2006)
Bx12	42,410
Bx17	10,964
Bx9	27,199
Bx22	17,695
W 60-61 (Bee Line)	6,427
TOTAL:	104,695

Related Bus Improvements

- Bus Rapid Transit Corridors
 - Operational improvements
 - Capital improvements
- Bus Hot Spots Program
 - Localized operational improvements
 - Associated pedestrian improvements
- Corridor Improvements
 - Congested corridors project
 - Other planning/traffic initiatives
- Improvements to Existing Bus Lanes
- Increased Monitoring/Evaluation

SBS Pilot Tests

- Red bus lanes
 - Fordham Road
 - 57th Street
- Interior bus lanes and bus bulbs
 - Lower Broadway (used by SI Express buses)
- Transit signal priority
 - Victory Boulevard (Staten Island)
- Soft barrier protection for bus lanes
 - Testing planned for Spring 2008