



Metropolitan Transportation Authority

Construction & Development

Metro-North Railroad



Bronx Community Board 11

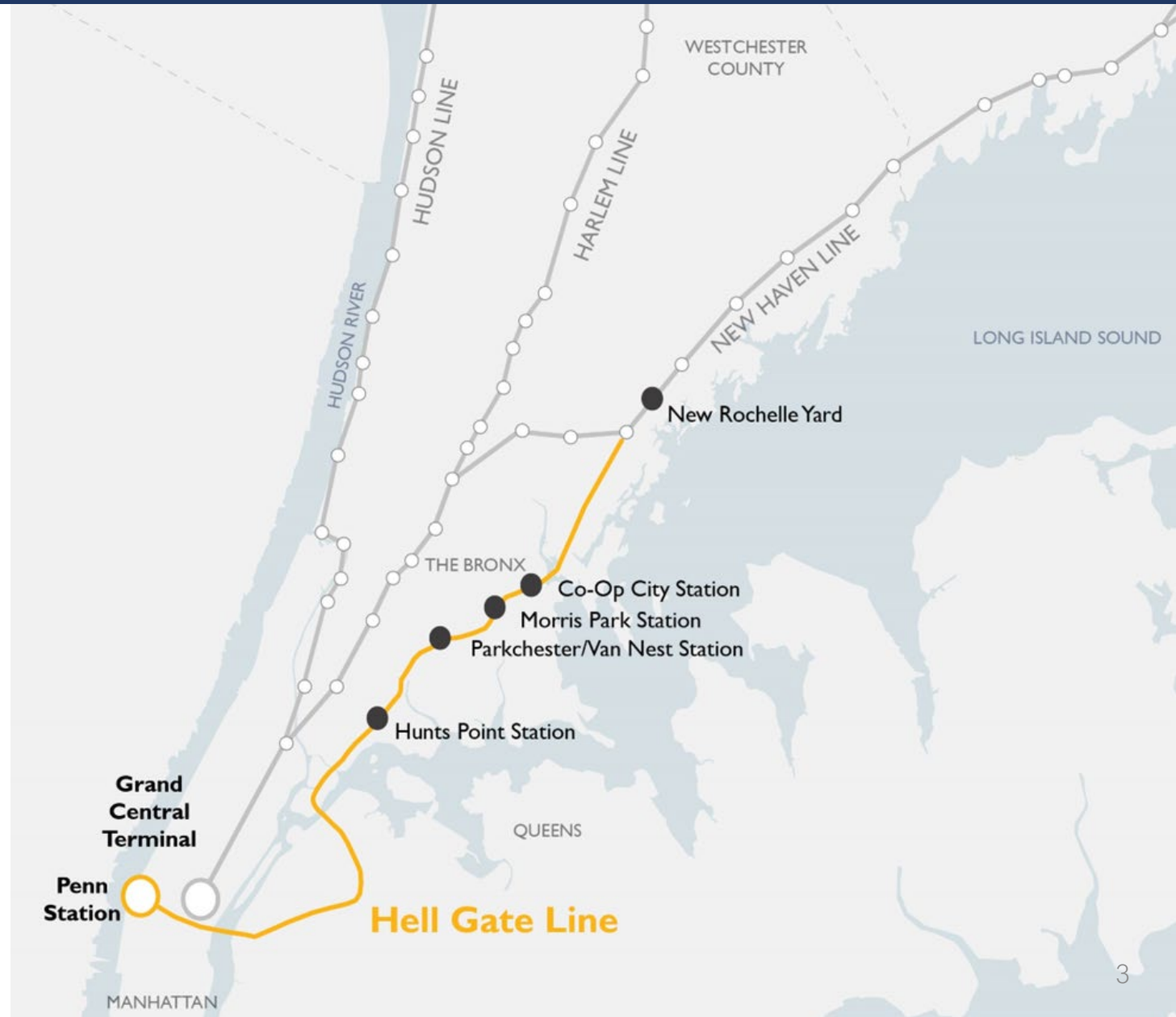
March 10, 2025

Agenda

- Project Overview
- Project Progress
- Upcoming Work
- Community Engagement
- Contact Us
- Q&A

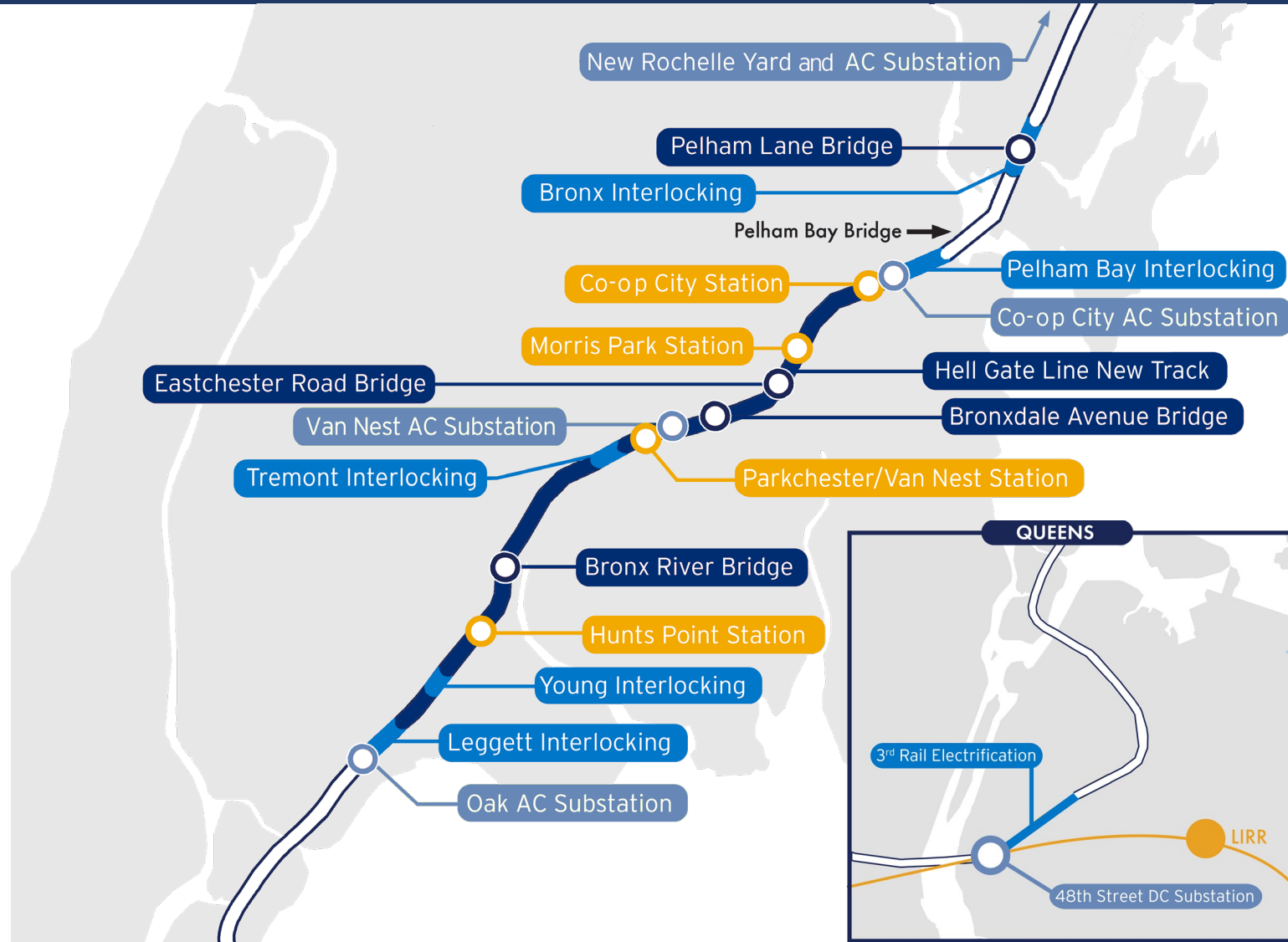
Project Overview

- New Metro-North rail service to and from Penn Station
- 4 new ADA stations in the Bronx; reduce commutes to Midtown up to 50 minutes each way
- Regional transportation connectivity



Project Overview

- Upgrade Amtrak's Hell Gate Line to a state of good repair:
 - **19** miles of track work
 - **4** new interlockings
 - **1** reconfigured interlocking
 - **3** new substations
 - **2** upgraded substations
 - **4** bridge rehabilitations
 - New drainage infrastructure
 - New Rochelle Yard expansion



Overall Project Benefits



Faster Travel Times

Improves access to underserved neighborhoods and gets you to your destination faster



Economic Vitality

Supports the local and regional economy



Connected Communities

Connects you to several neighborhoods in the Bronx and throughout the region



Sustainable Infrastructure

Encourages drivers to switch to train travel, reducing traffic congestion and improving air quality



Reverse Commuting Opportunities

Attracts new talent and broadens the job market



Optimization of Existing Infrastructure

Delivers cost-effective transit solutions



Regional Transportation Connectivity

Expands your travel opportunities



Enhanced Network Reliability

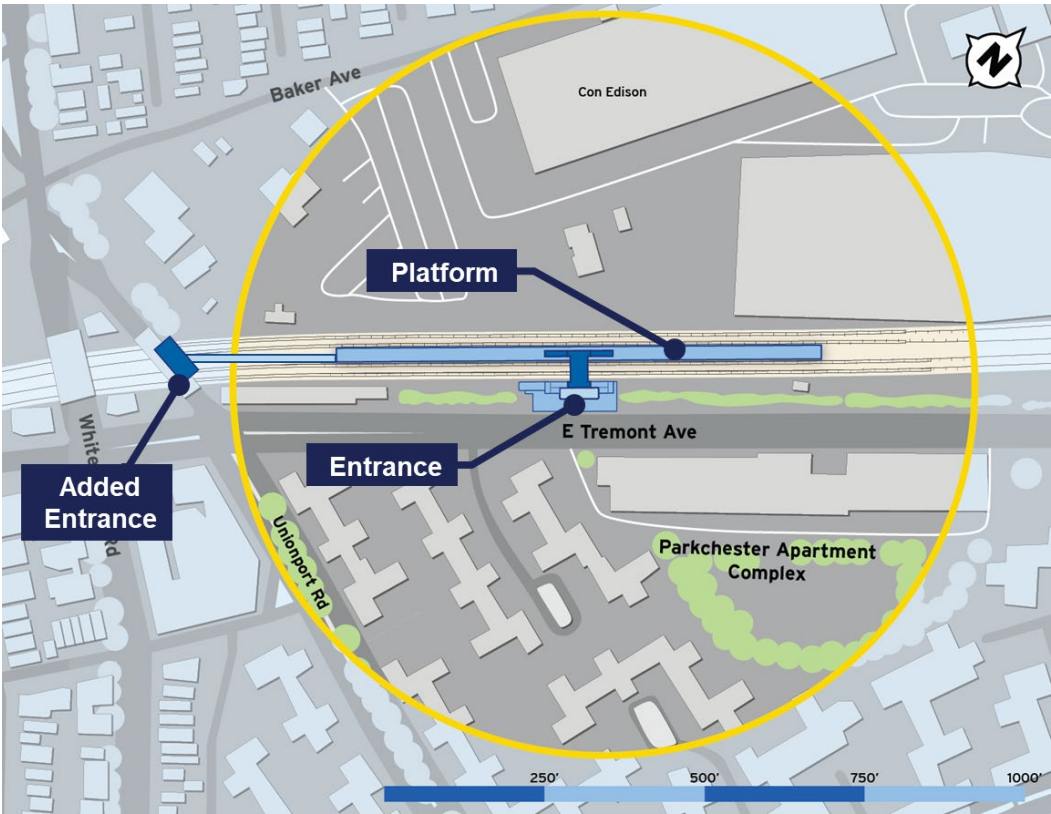
Provides flexibility for Metro-North and improves on-time performance for intercity passengers

Amtrak and Freight Railroad Benefits

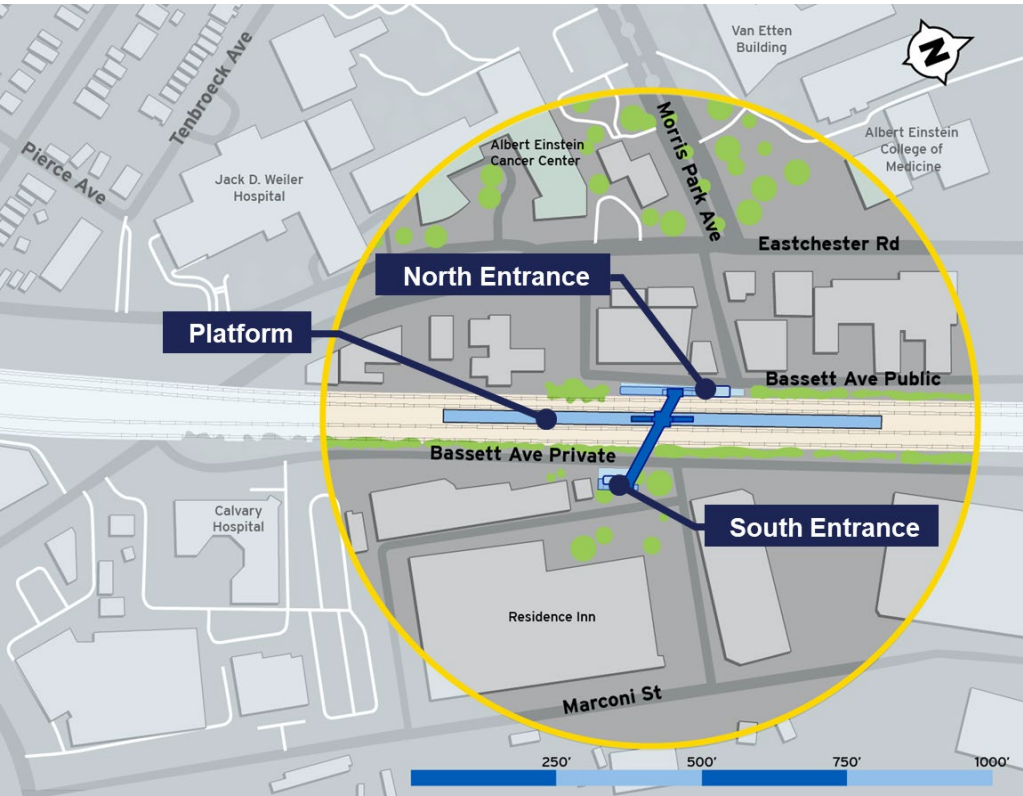
- Improves on-time performance and reliability for intercity passengers
- Brings Amtrak's Hell Gate Line to a state of good repair, including:
 - Hell Gate Line catenary system
 - 100+ year old bridge structures
- Electrical upgrades, improved signal system, and state-of-the-art communication system
- Significant enhancements to stormwater management including new drainage



Parkchester/Van Nest Station Conceptual Site Plan & Rendering



Morris Park Station Conceptual Site Plan & Rendering



Project Progress

- Station Areas
- Overhead Catenary Structures (OCS)
- Substations & Drainage
- Leggett Interlocking
- Bridge Rehabilitation

Station Areas

The majority of station entrance foundations are complete. Utility work is underway

Work Zone (Station Entrances)	Mini/Micropiles	Pile Caps & Grade Beams (Est.)
Hunts Point (South)	100%	100%
Van Nest (Main)	100%	100%
Morris Park (North)	69%	65%
Morris Park (South)	100%	75%
Co-op City (East)	100%	100%
Co-op City (West)	100%	75%

Hunts Point Station

- Work is underway on sewage system
- Excavation for stormwater detention tanks is underway

Parkchester / Van Nest Station

- Retaining wall installation is underway
- Control house foundation pad is in progress



Sewage system installation at Hunts Point Station, January 2025



Foundation and formwork progress at Parkchester / Van Nest Station, January 2025

Overhead Catenary System

100+ year old infrastructure and Insufficient capacity for increased service

New galvanized steel structures and new wires with full tension air breaks

Work Zone	Caissons	Columns	Portals
Leggett	100%	97%	87%
Van Nest	100%	95%	75%
Hunts Point	59%	0%	0%
Morris Park	40%	0%	0%
Bronx 1	100%	0%	0%

Leggett Interlocking

- Demolition of old catenary structures underway
 - Creates line of site to the new signal tower



New catenary structures at Parkchester / Van Nest Station, July 2024



Demolition of old catenary structure at Leggett Interlocking, February 2025

Substations & Drainage

Increases capacity to meet additional demand from new service

Enhances service reliability and climate resiliency

Co-op City Substation

- Caissons installed

Parkchester / Van-Nest Substation

- Caissons installed
- Formwork installation ongoing

Drainage Systems

Work Zone	Drainage
Leggett	95%
Van Nest	50%
Hunts Point	4%
Morris Park	South 33%
Bronx 1	0%



Formwork installation at Parkchester / Van Nest Substation, January 2025



Formwork installation at Parkchester / Van Nest Substation, January 2025

Leggett Interlocking

Increased operational flexibility

Enables extended track outages during construction

Tracks

- Completed

Drainage

- 95% Complete

Signal and Communications System

- Complete
- Re-testing underway
- “Turned on” in mid-April

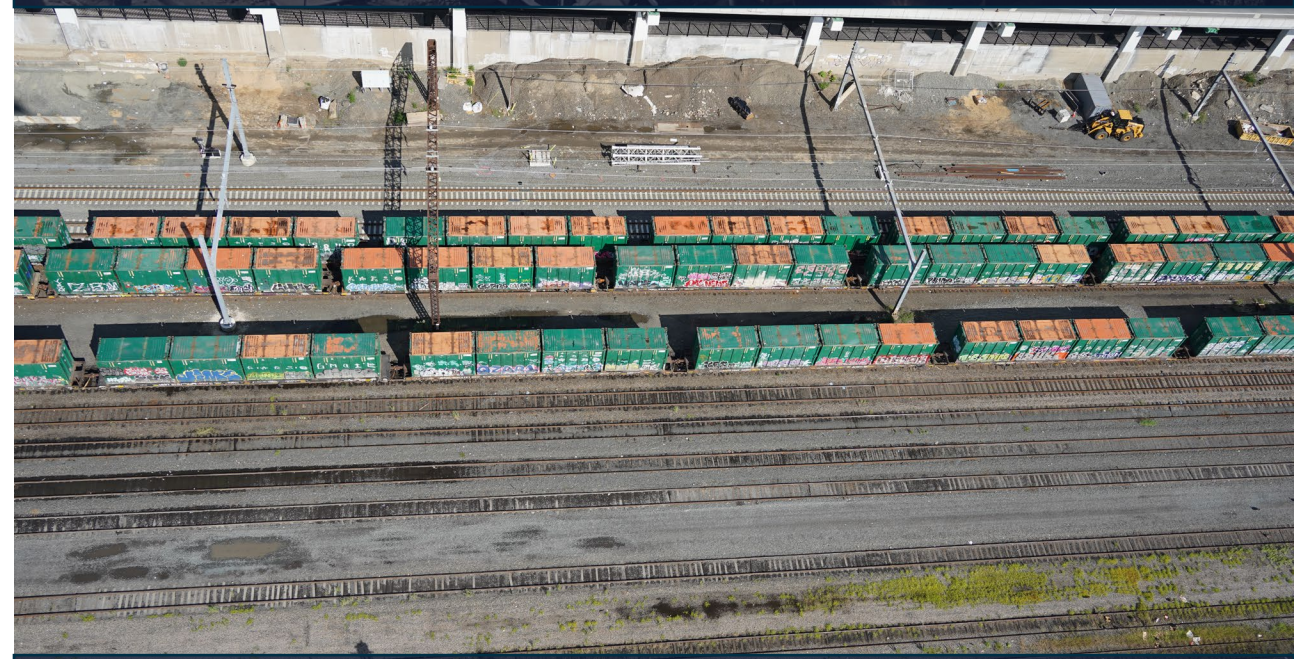
Overhead Catenary Structure

- 75% complete, Tracks 1 & 2 complete

Long-Term Track Outage to begin in late April following Leggett commissioning



Leggett signal bridge installation, January 2025



Leggett interlocking overview, October 2024

Bridge Rehabilitation

100+ year old aging infrastructure

Span-by-span approach to avoid service impacts

Bronxdale Avenue Bridge

- Phase I Complete (southern span)

Eastchester Road Bridge

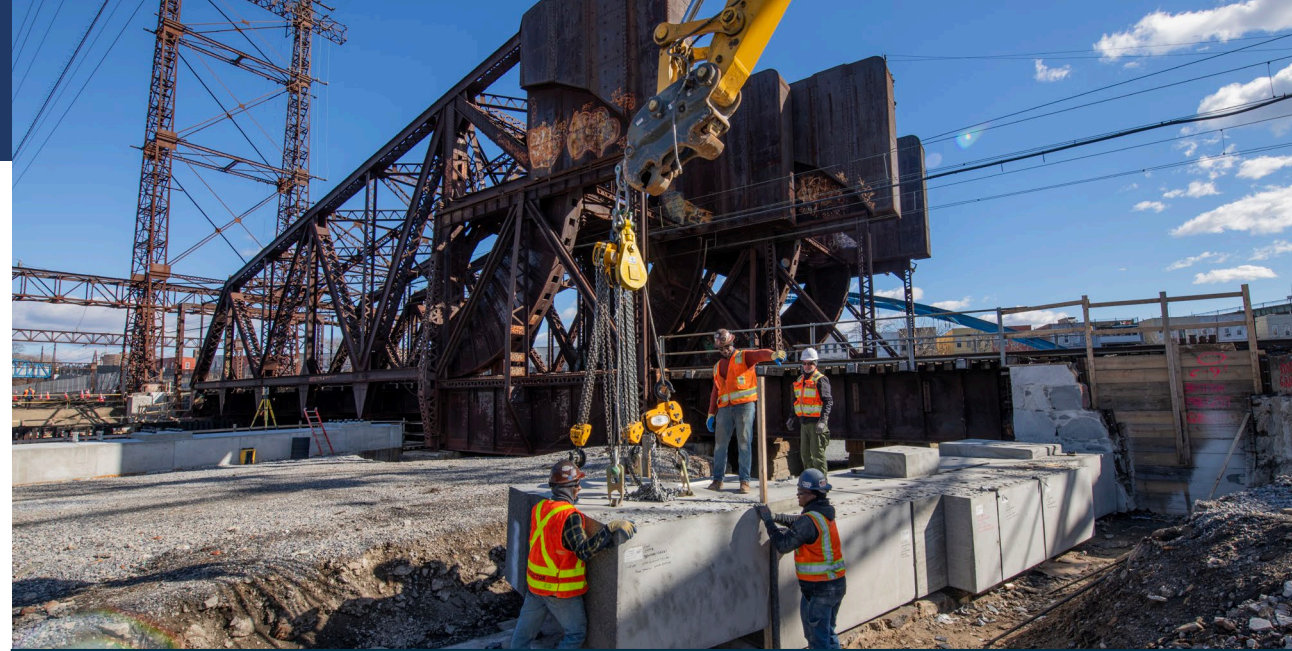
- Grouting work underway

Pelham Lane Bridge

- New bridge footings complete
- Deck demolition underway

Bronx River Bridge

- Pre-cast concrete abutments and steel girders delivered
- Bridge launch scheduled for mid-May



Pre-cast concrete abutments delivered to Bronx River Bridge site, February 2025



Deck demolition progress at Pelham Ln Bridge, January 2025

Overnight Work

Construction is in full swing:

- Residents and businesses will notice an increase in work along the corridor, including nighttime and weekend work

Night work is necessary to limit impacts to existing Amtrak service:

- The Northeast Corridor is the most heavily used passenger rail line in the U.S.—both in terms of ridership and service frequency.

The work may result in noise and vibrations:

- We are committed to keeping the public informed of upcoming work.
- 24/7 hotline, dedicated website, regular newsletters, stakeholder meetings.



Steel delivery at Bronx River Bridge, February 2025

Upcoming Work

- Bridges
- Power System Upgrades
- Station Areas
- Leggett Interlocking

Bridges

Bronxdale Avenue Bridge

- Waterproofing work on new span
- Work to pause at the end of March

Eastchester Road Bridge

- Work to resume in early 2026

Pelham Lane Bridge

- Awaiting pre-cast material delivery
- New steel installation to commence Q4 2025

Bronx River Bridge

- Installation of precast abutments
- Bridge launch to occur in April

For details on intermittent lane closures, please visit our website: new.mta.info/project/penn-station-access



Pre-cast abutment delivery at
Bronx River Bridge,
February 2025



Demolition progress at Pelham Lane Bridge,
January 2025

Power System Upgrades

Hunts Point & Morris Park

- Continue to progress caisson installation
- Begin OCS column & portal installation

Leggett Interlocking & Parkchester / Van Nest

- Complete installation of columns & portals

Bronx 1

- Commence installation of columns

Co-op City Substation

- Begin trenching and excavation work for electrical utilities

Parkchester / Van Nest Substation

- Continue formwork installation
- Install rainwater detention tanks



Formwork installation at Parkchester / Van Nest Substation, January 2025

Station Areas

Hunts Point

- Awaiting structural steel delivery
- Commence steel installation

Morris Park

- Continue work on pile caps and grade beams
- Drainage work near station

Parkchester / Van Nest

- Utility work is ongoing
- Drainage and track work near station

Co-op City

- Utility work is ongoing



Progress at Morris Park Station, January 2025



Foundation work at Co-op City Station, January 2025

Leggett Interlocking

Drainage

- Complete work on drainage structure

Signal and Communications System

- Complete re-testing

Overhead Catenary Structure

- Complete remaining catenary structures
- Complete reprofiling of catenary wires

Commissioning of Leggett Interlocking – Mid-April 2025



Factory test of fabricated railroad crossovers and switches at Voestalpine Railway Systems Nortrak facility in Birmingham, Alabama, August 2022

Community Engagements

- Community Engagements
- Stay Up to Date

Community Engagements

Robust Outreach Program:

- Bronx-Westchester Community Council
- Bronx Community Boards 2, 9, 10, and 11
- New York Metropolitan Transportation Council
- PSA / steMTA Program in local schools
- Community & stakeholder meetings
 - Co-op City Section 5 Public Information Session
 - Center for Bronx Non-Profits
 - Bronx Chamber of Commerce
 - Hunts Point-Longwood Community Coalition
 - Bronx EDC
 - Hunts Point EDC Spring Mingle



Stay Informed



Telephone Hotline: 347-263-7837



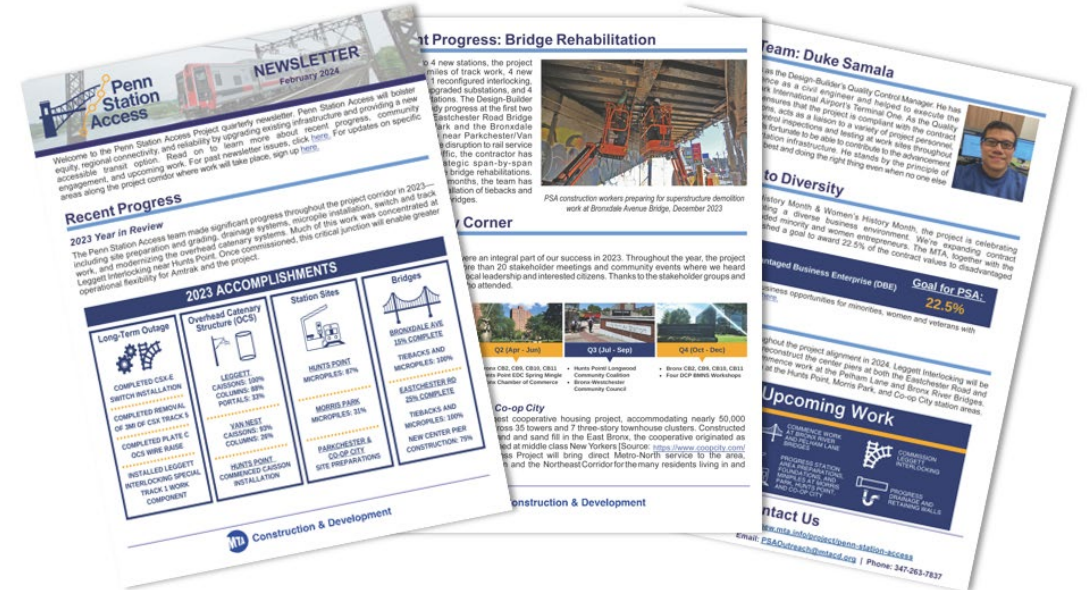
Email: PSAOutreach@mtacd.org



Sign-up for updates and newsletters on the website



Project Webpage: <https://new.mta.info/project/penn-station-access>



An aerial photograph of New York City, showing the Hudson River, the Manhattan skyline, and various urban areas. A semi-transparent white box with a thin black border is centered over the image, containing the text 'Thank You Questions?'.

Thank You
Questions?