

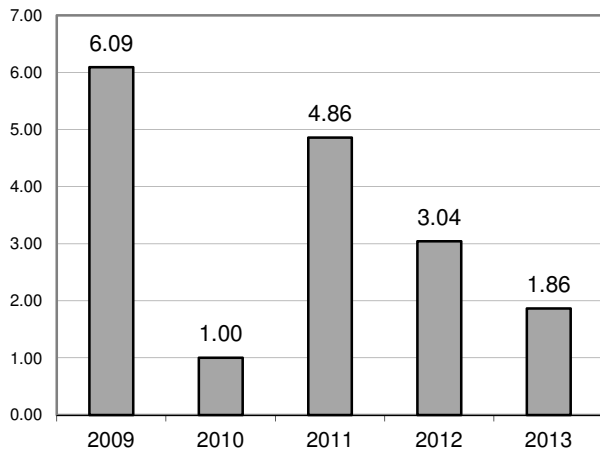


**Metro-North Railroad**

# **Safety Report**

# MTA Metro-North Railroad

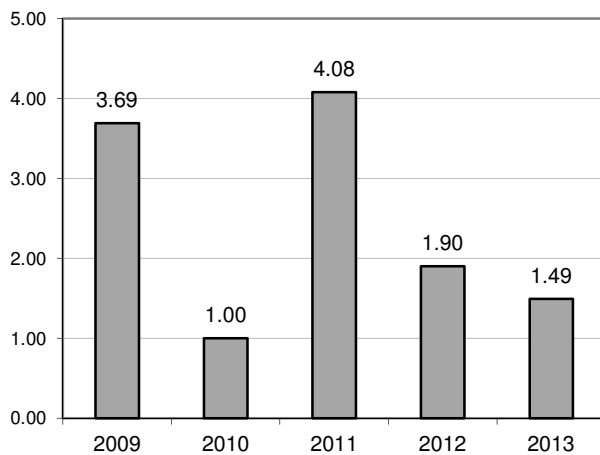
## Summary of Employee Injuries thru January



### Total Employee Injuries

Year	Total	Total FI*
2009	33	6.09
2010	5	1.00
2011	25	4.86
2012	16	3.04
2013	10	1.86

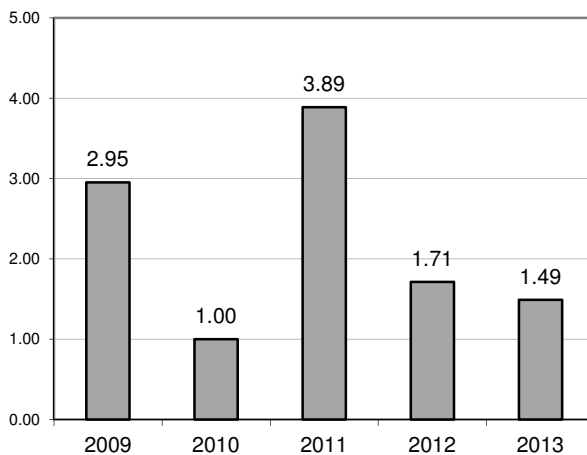
% change from last year: -38.8%  
2013 Total FI Goal 2.80



### Employee FRA Reportable Injuries

Year	Total	FRA FI*
2009	20	3.69
2010	5	1.00
2011	21	4.08
2012	10	1.90
2013	8	1.49

% change from last year: -21.6%  
2013 FRA FI Goal 2.35



### Employee Lost Time and Restricted Duty Injuries

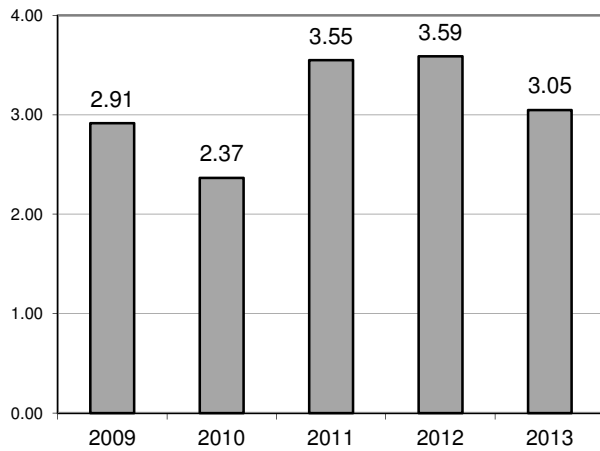
Year	LT	RD	LT FI*	RD FI*	LT&RD FI*
2009	14	2	2.58	0.37	2.95
2010	4	1	0.80	0.20	1.00
2011	16	4	3.11	0.78	3.89
2012	8	1	1.52	0.19	1.71
2013	7	1	1.30	0.19	1.49

% change from last year: -12.9%  
2013 LT&RD FI Goal 1.75

\* - Injuries per 200,000 hours worked

## MTA Metro-North Railroad

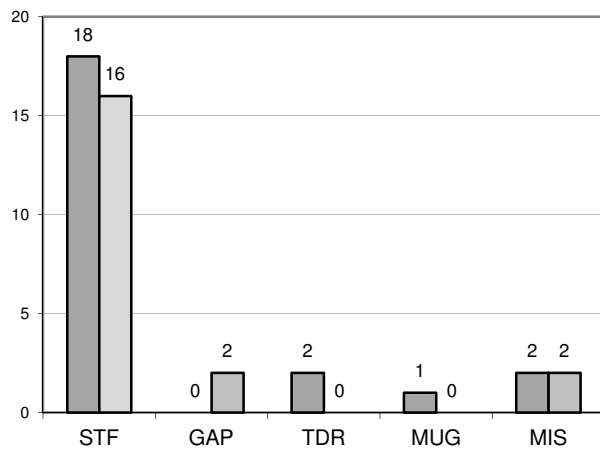
### Summary of Customer/Contractor Injuries thru January



#### Total Customer Injuries

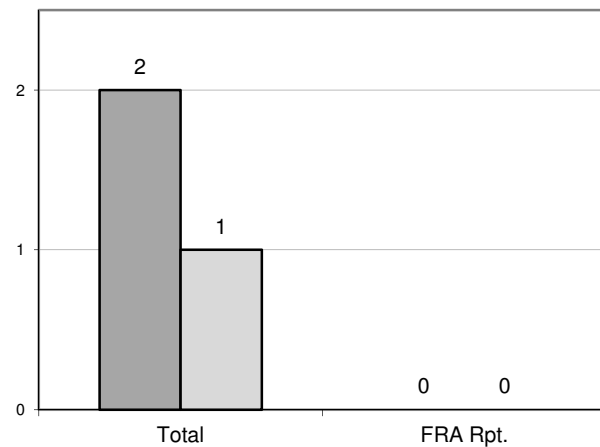
Year	Total	Total FI*
2009	18	2.91
2010	14	2.37
2011	21	3.55
2012	23	3.59
2013	20	3.05

% change from last year: -15.1%  
2013 Total FI Goal 2.70



#### Top 5 Customer Injuries by Type

Year	Slip/Trip/Fall	Gap	Train Doors	Mugging	Misc.
2012	18	0	2	1	2
2013	16	2	0	0	2



#### Contractor Injuries

Year	Total	FRA Rpt.
2012	2	0
2013	1	0
% Chg	-50.0%	0.0%

\* - Injuries per 1,000,000 rides