

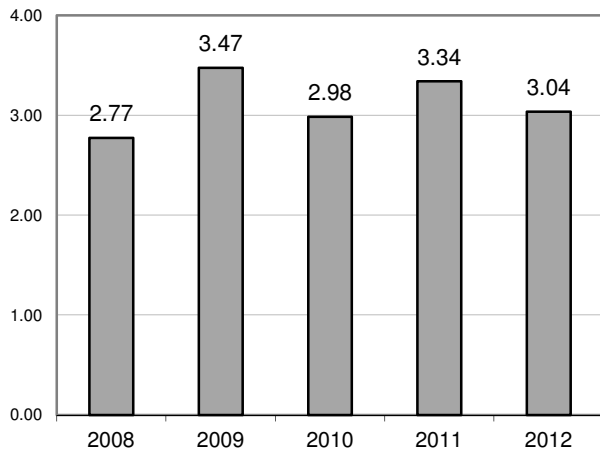


Metro-North Railroad

Safety Report

MTA Metro-North Railroad

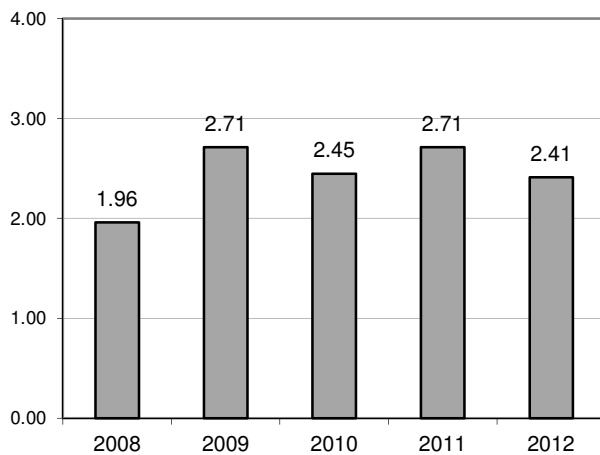
Summary of Employee Injuries thru December



Total Employee Injuries

Year	Total	Total FI*
2008	174	2.77
2009	219	3.47
2010	184	2.98
2011	208	3.34
2012	189	3.04

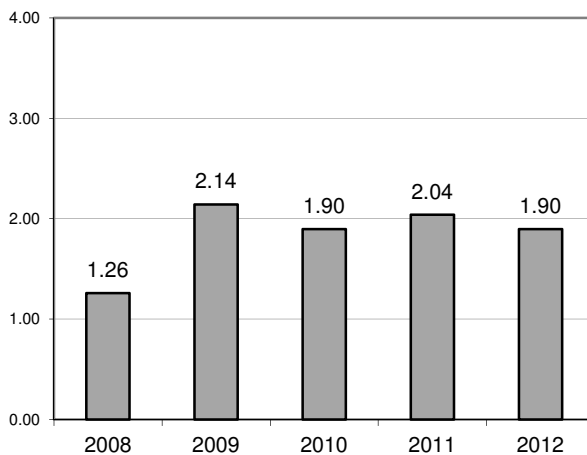
% change from last year: -9.1%
2012 Total FI Goal 2.90



Employee FRA Reportable Injuries

Year	Total	FRA FI*
2008	123	1.96
2009	171	2.71
2010	151	2.45
2011	169	2.71
2012	150	2.41

% change from last year: -11.2%
2012 FRA FI Goal 2.50



Employee Lost Time and Restricted Duty Injuries

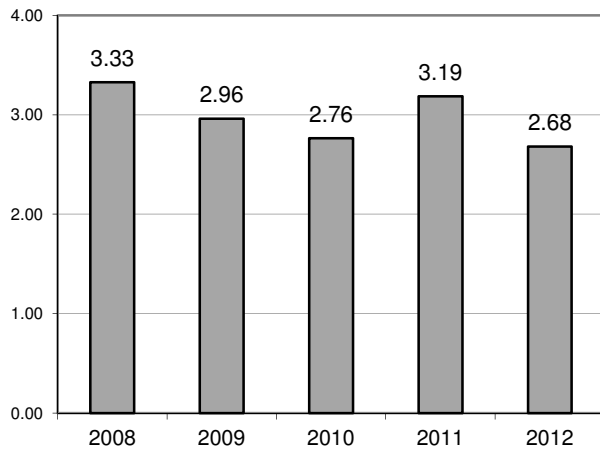
Year	LT	RD	LT FI*	RD FI*	LT&RD FI*
2008	53	26	0.84	0.41	1.26
2009	117	18	1.86	0.29	2.14
2010	98	19	1.59	0.31	1.90
2011	100	27	1.61	0.43	2.04
2012	110	8	1.77	0.13	1.90

% change from last year: -7.0%
2012 LT&RD FI Goal 2.00

* - Injuries per 200,000 hours worked

MTA Metro-North Railroad

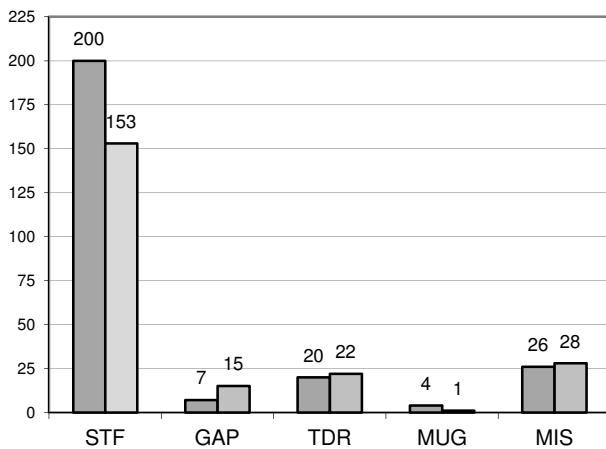
Summary of Customer/Contractor Injuries thru December



Total Customer Injuries

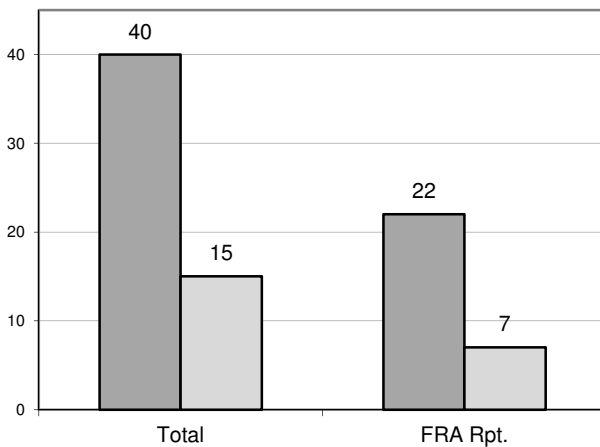
Year	Total	Total FI*
2008	271	3.33
2009	231	2.96
2010	219	2.76
2011	256	3.19
2012	218	2.68

% change from last year: -15.9%
2012 Total FI Goal 2.70



Top 5 Customer Injuries by Type

Year	Slip/Trip/Fall	Gap	Train Doors	Mugging	Misc.
2011	200	7	20	4	26
2012	153	15	22	1	28



Contractor Injuries

Year	Total	FRA Rpt.
2011	40	22
2012	15	7
% Chg	-62.5%	-68.2%

* - Injuries per 1,000,000 rides