

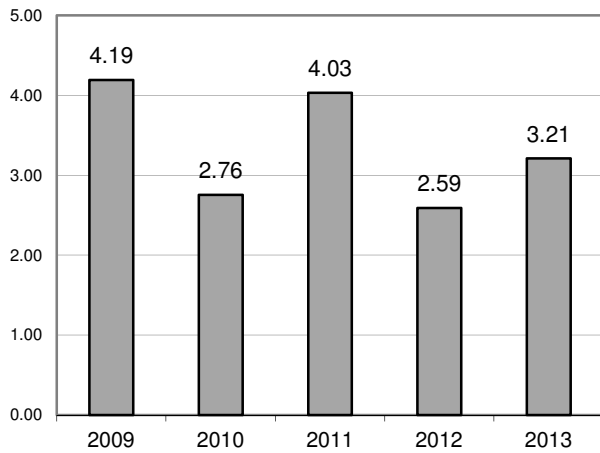


Metro-North Railroad

Safety Report

MTA Metro-North Railroad

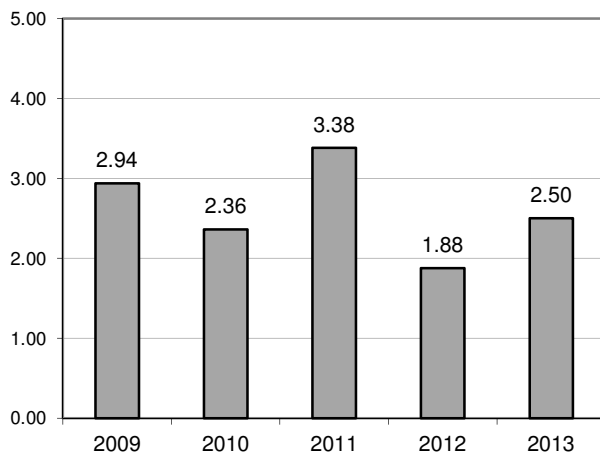
Summary of Employee Injuries thru March



Total Employee Injuries

Year	Total	Total FI*
2009	67	4.19
2010	42	2.76
2011	62	4.03
2012	40	2.59
2013	50	3.21

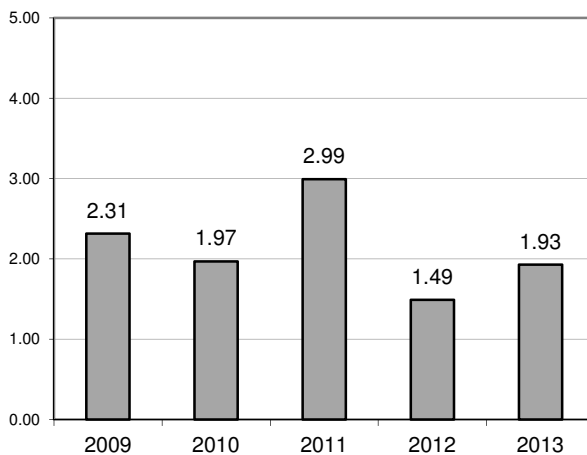
% change from last year: 23.9%
2013 Total FI Goal 2.80



Employee FRA Reportable Injuries

Year	Total	FRA FI*
2009	47	2.94
2010	36	2.36
2011	52	3.38
2012	29	1.88
2013	39	2.50

% change from last year: 33.4%
2013 FRA FI Goal 2.35



Employee Lost Time and Restricted Duty Injuries

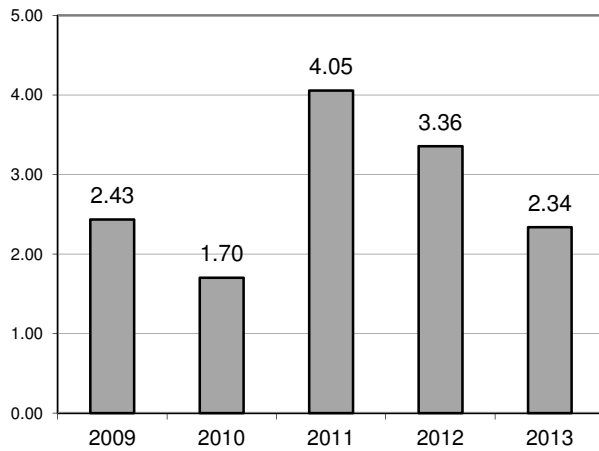
Year	LT	RD	LT FI*	RD FI*	LT&RD FI*
2009	33	4	2.06	0.25	2.31
2010	25	5	1.64	0.33	1.97
2011	39	7	2.54	0.46	2.99
2012	22	1	1.42	0.06	1.49
2013	26	4	1.67	0.26	1.93

% change from last year: 29.3%
2013 LT&RD FI Goal 1.75

* - Injuries per 200,000 hours worked

MTA Metro-North Railroad

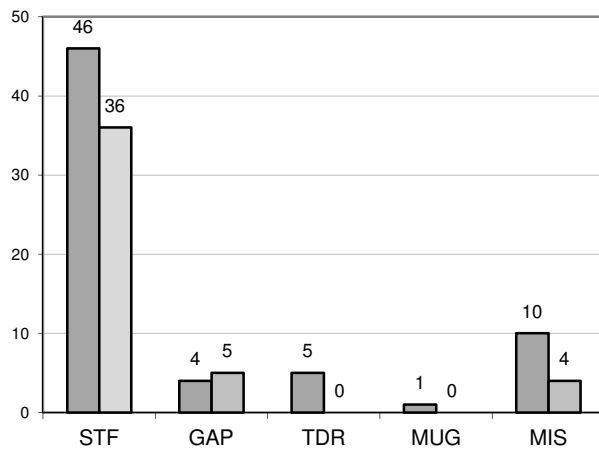
Summary of Customer/Contractor Injuries thru March



Total Customer Injuries

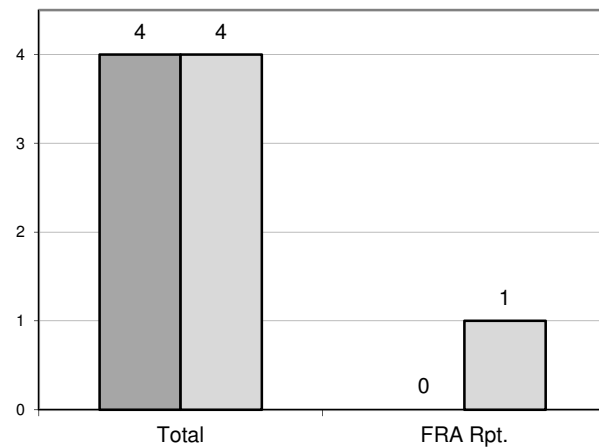
Year	Total	Total FI*
2009	45	2.43
2010	31	1.70
2011	75	4.05
2012	66	3.36
2013	45	2.34

% change from last year: -30.4%
2013 Total FI Goal 2.70



Top 5 Customer Injuries by Type

Year	Slip/Trip/Fall	Gap	Train Doors	Mugging	Misc.
2012	46	4	5	1	10
2013	36	5	0	0	4



Contractor Injuries

Year	Total	FRA Rpt.
2012	4	0
2013	4	1
% Chg	0.0%	0.0%

* - Injuries per 1,000,000 rides