

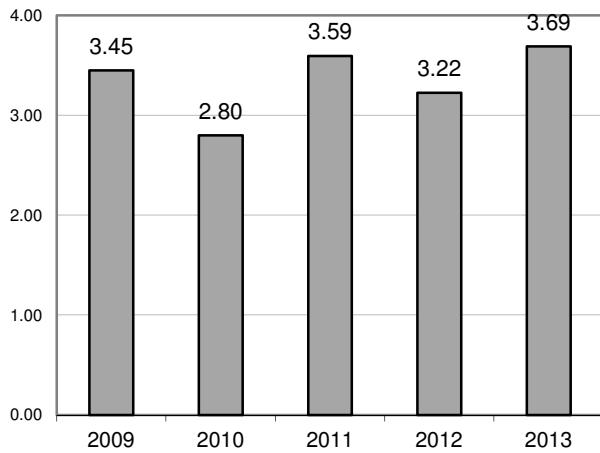


**Metro-North Railroad**

# **Safety Report**

# MTA Metro-North Railroad

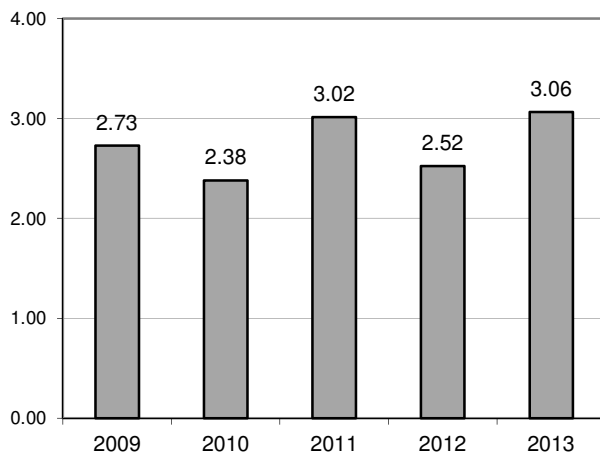
## Summary of Employee Injuries thru June



### Total Employee Injuries

Year	Total	Total FI*
2009	110	3.45
2010	87	2.80
2011	112	3.59
2012	101	3.22
2013	118	3.69

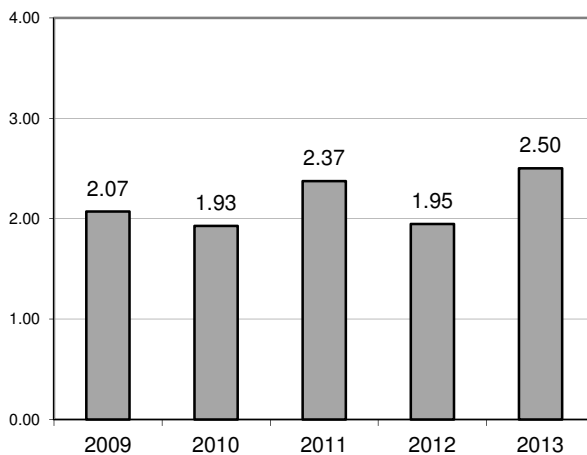
% change from last year: 14.4%  
2013 Total FI Goal 2.80



### Employee FRA Reportable Injuries

Year	Total	FRA FI*
2009	87	2.73
2010	74	2.38
2011	94	3.02
2012	79	2.52
2013	98	3.06

% change from last year: 21.5%  
2013 FRA FI Goal 2.35



### Employee Lost Time and Restricted Duty Injuries

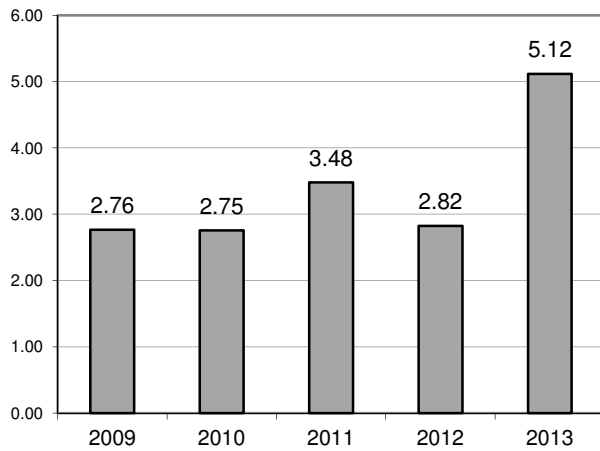
Year	LT	RD	LT FI*	RD FI*	LT&RD FI*
2009	59	7	1.85	0.22	2.07
2010	50	10	1.61	0.32	1.93
2011	60	14	1.92	0.45	2.37
2012	58	3	1.85	0.10	1.95
2013	74	6	2.31	0.19	2.50

% change from last year: 28.4%  
2013 LT&RD FI Goal 1.75

\* - Injuries per 200,000 hours worked

## MTA Metro-North Railroad

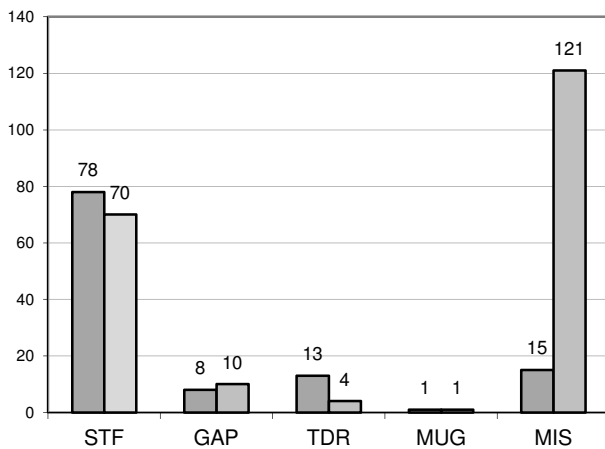
### Summary of Customer/Contractor Injuries thru June



#### Total Customer Injuries

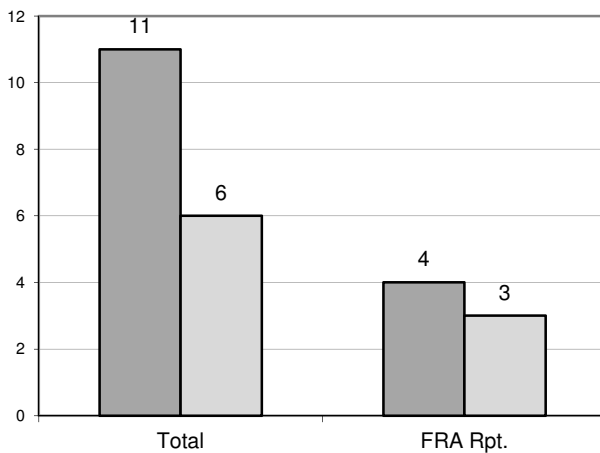
Year	Total	Total FI*
2009	106	2.76
2010	106	2.75
2011	136	3.48
2012	115	2.82
2013	206	5.12

% change from last year: 81.1%  
2013 Total FI Goal 2.70



#### Top 5 Customer Injuries by Type

Year	Slip/Trip/Fall	Gap	Train Doors	Mugging	Misc.
2012	78	8	13	1	15
2013	70	10	4	1	121



#### Contractor Injuries

Year	Total	FRA Rpt.
2012	11	4
2013	6	3
% Chg	-45.5%	0.0%

\* - Injuries per 1,000,000 rides