



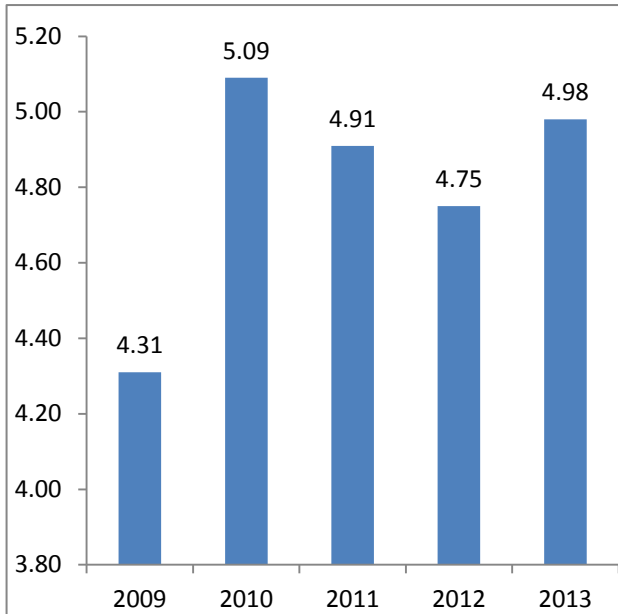
Bridges and Tunnels

Safety Report May 2013



Bridges and Tunnels

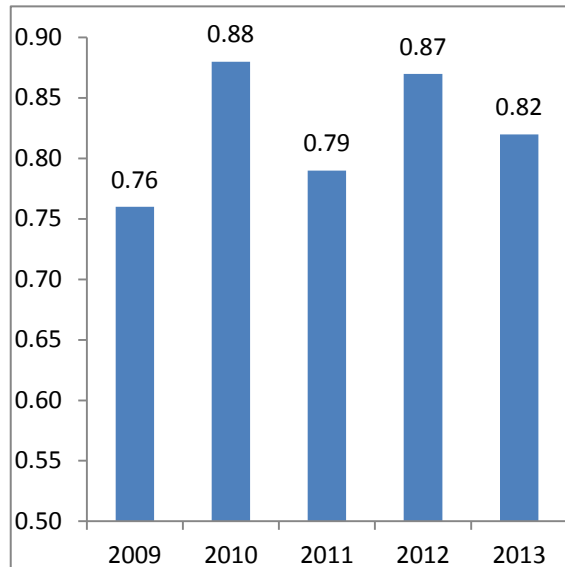
5 Yr Summary of Customer Collisions & Injuries thru May



Total Customer Collisions

| Year | Total Collisions | Collision Rate/M Vehicles |
|------|------------------|---------------------------|
| 2009 | 513 | 4.31 |
| 2010 | 600 | 5.09 |
| 2011 | 563 | 4.91 |
| 2012 | 557 | 4.75 |
| 2013 | 575 | 4.98 |

% change from last year: 4.8%
5 year Average 4.81



Total Injury Collisions

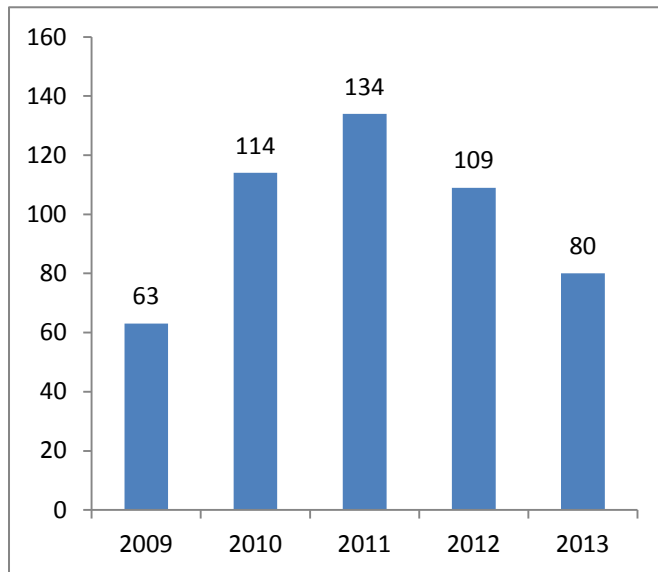
| Year | Injury Collisions | Injury Rate/M Vehicles |
|------|-------------------|------------------------|
| 2009 | 90 | 0.76 |
| 2010 | 104 | 0.88 |
| 2011 | 90 | 0.79 |
| 2012 | 102 | 0.87 |
| 2013 | 95 | 0.82 |

% change from last year: -5.7%
5 year Average 0.82



Bridges and Tunnels

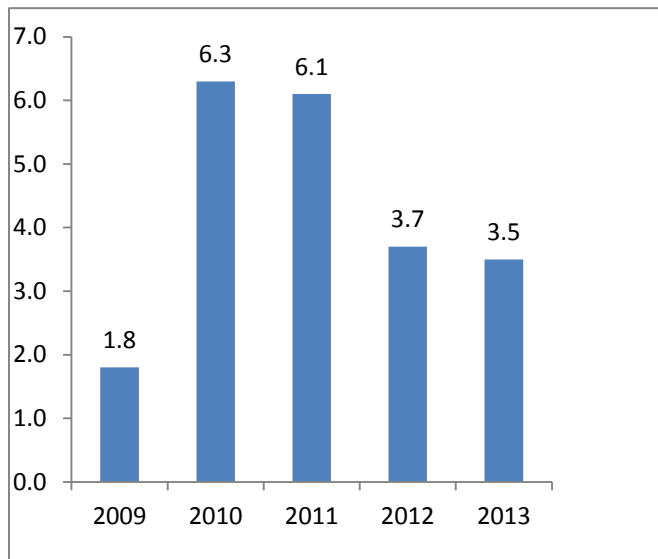
5 Yr Summary of Employee Accident Reports & Injuries thru May



Total Employee Accident Reports (C-2's)

| Year | Total |
|------|-------|
| 2009 | 63 |
| 2010 | 114 |
| 2011 | 134 |
| 2012 | 109 |
| 2013 | 80 |

% change from last year: -26.6%
5 year Average 100



Employee Lost Time Injuries

| Year | Lost Time Injuries | Frequency Rate (Per 200,000 Hours) |
|------|--------------------|------------------------------------|
| 2009 | 14 | 1.8 |
| 2010 | 46 | 6.3 |
| 2011 | 41 | 6.1 |
| 2012 | 25 | 3.7 |
| 2013 | 22 | 3.5 |

% change from last year: -5.4%
5 year Average 4.28