

Long Island Rail Road Committee

June 23, 2014

East Side Access Ventilation Facilities Update

MTA Capital Construction

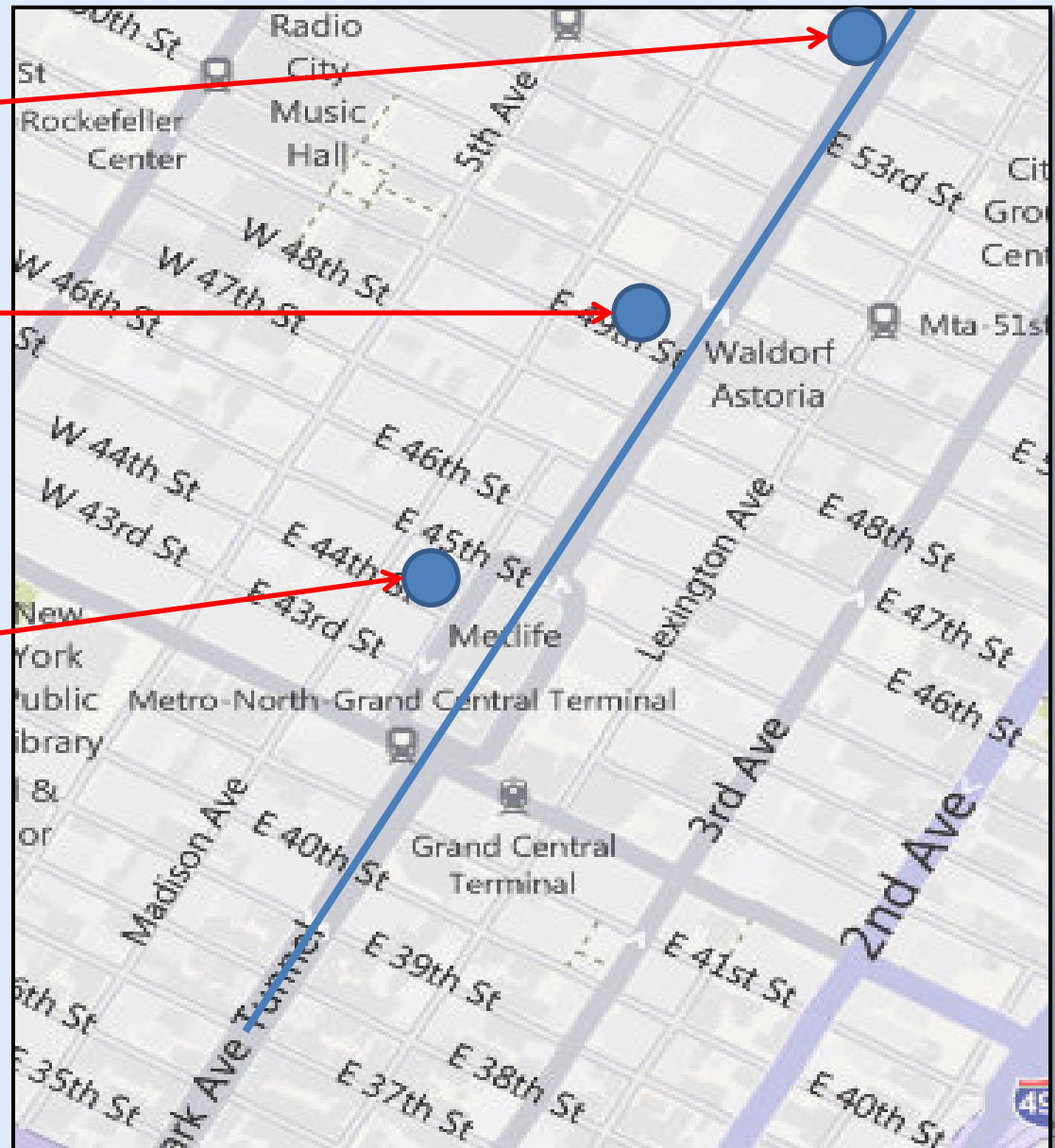


Manhattan Ventilation Plants Under Construction

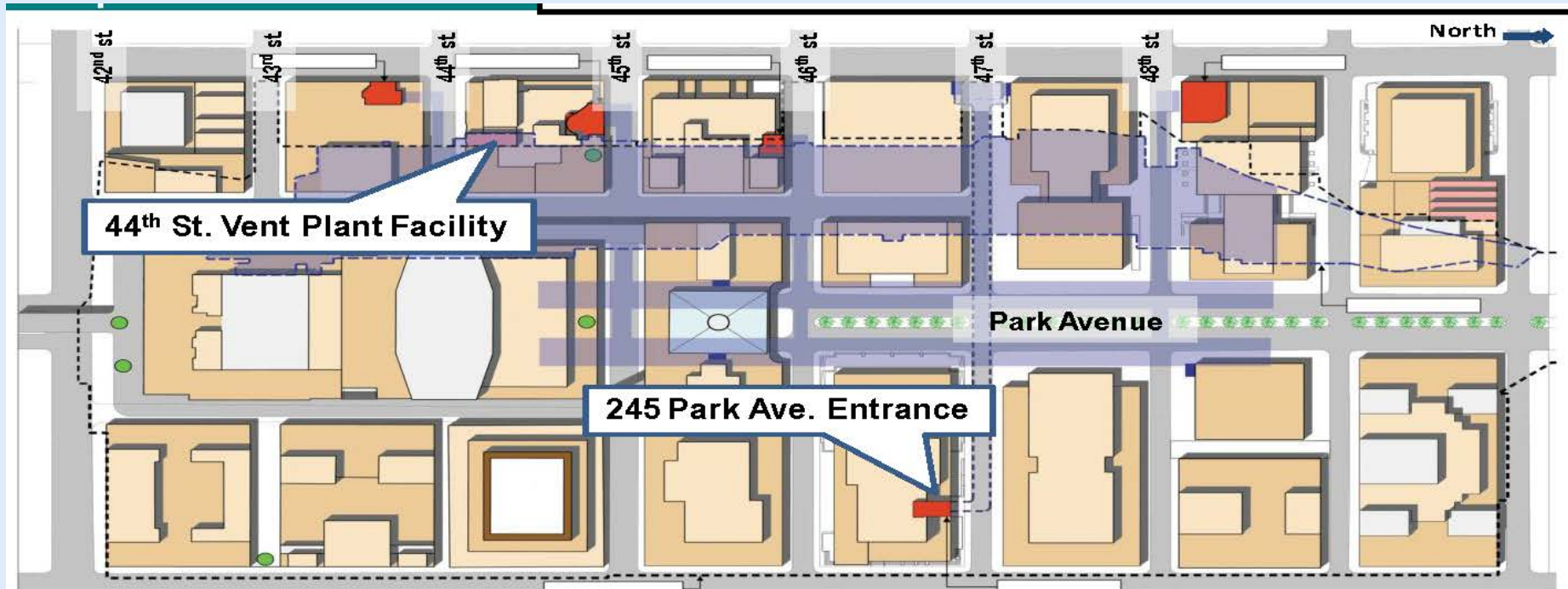
55th St Vent Plant
(600,000 cfm)

50th St Vent Plant
(600,000 cfm)

44th St Vent Plant
(300,000 cfm)



44th Street Ventilation Facility & 245 Park Ave Entrance



245 Park Ave Entrance

Opened October 2013



44th St Vent Facility & 245 Park Ave Entrance

- \$55.3 million contract
- New above ground ventilation facility, below ground shaft and tunnel
- New entrance at 245 Park Avenue
- Contract is 99% complete

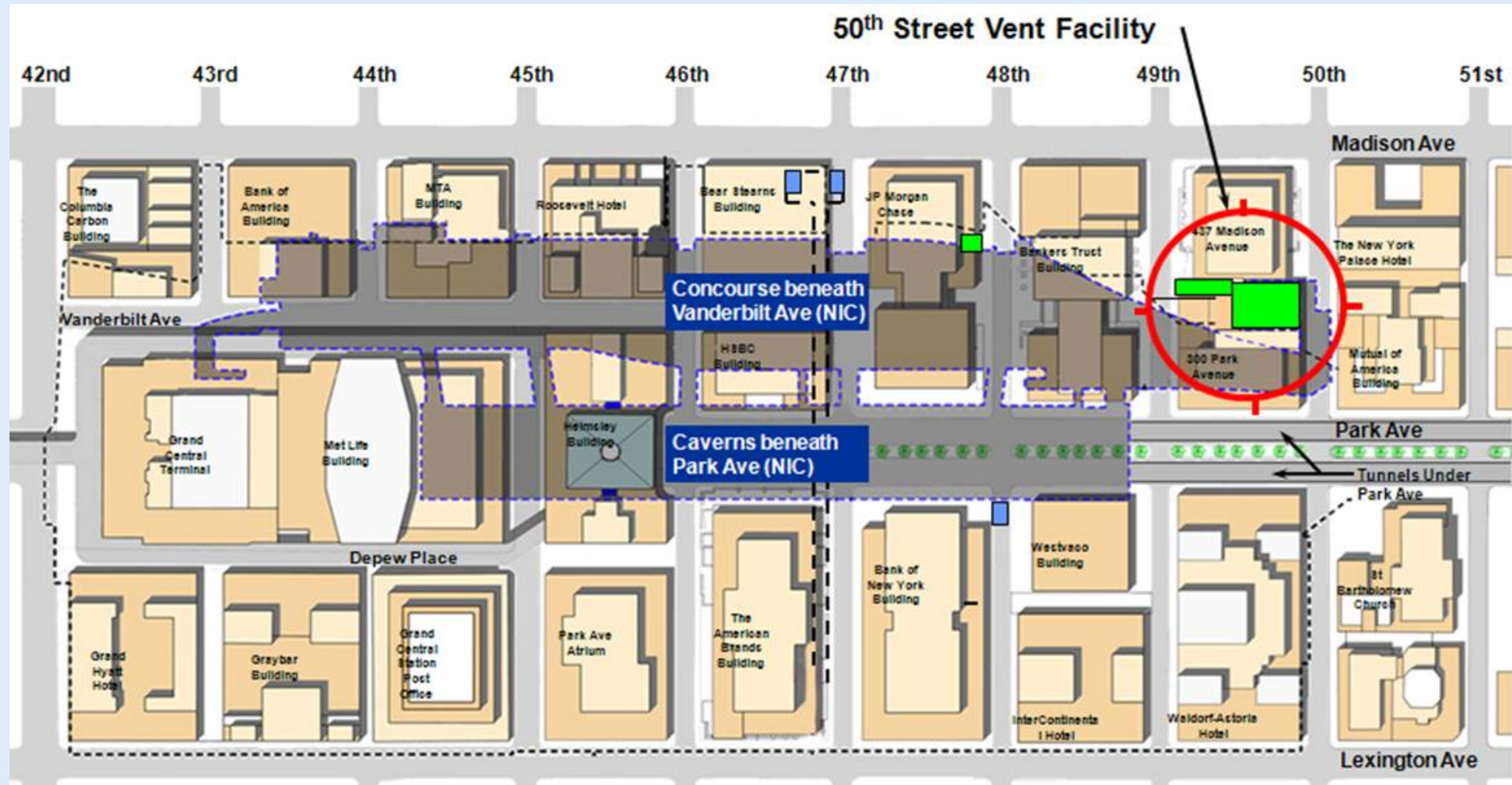


44th Street Vent Facility

Under Construction
May 29, 2014



50th Street Ventilation Facility



50th Street Ventilation Facility

- \$96.6 million contract
- New above ground ventilation and concourse service facility
- Includes new public open space to open Summer 2014
- Contract is 99% complete





New Public Space at 50th Street

MTA Capital Construction



New Public Space at 50th Street



55th St Ventilation Facility

- \$56.4 million contract
- New below ground ventilation facility
- Completion scheduled for July 2015
- Contract is 45% complete



Street decking installation



Hole-through to cavern below

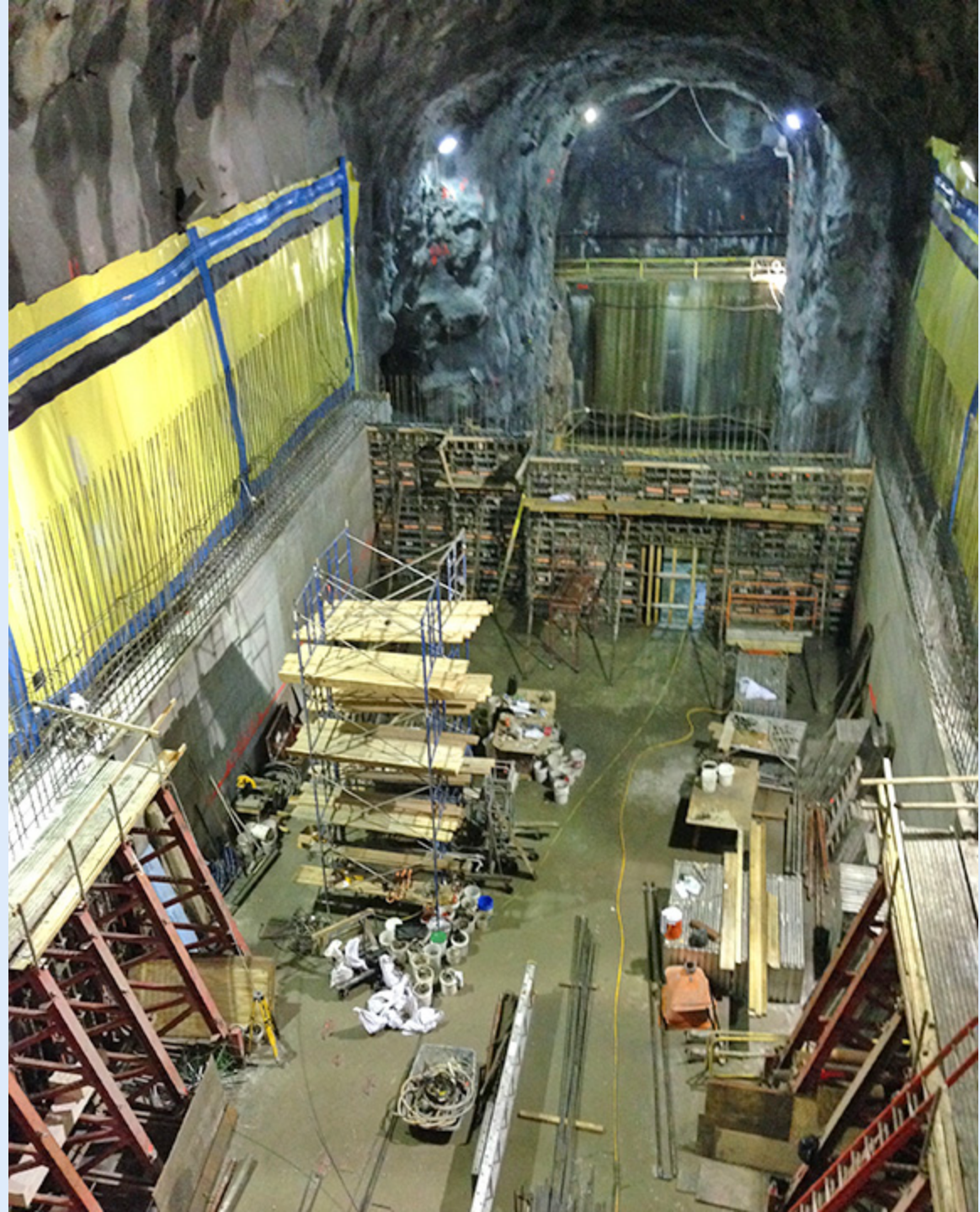
55th Street Ventilation Facility

Substructure construction
in progress in cavern
(looking West)



55th Street Ventilation Facility

(looking East)





Looking East