

# Bridges and Tunnels Committee Meeting

## January 2015

---

### Committee Members

A. Cappelli, Chair  
F. Ferrer, MTA Vice Chairman  
A. Albert  
J. Banks  
N. Brown  
J. Kay  
M. Pally  
V. Tessitore  
P. Trottenberg

**Bridges & Tunnels Committee Meeting**  
347 Madison Avenue - 5th Floor Board Room  
New York, NY 10017  
Tuesday, 1/20/2015  
12:00 - 12:30 PM ET

**1. Public Comments Period**

**2. Approval of Minutes - December 2014**

*BT Committee Minutes - December 2014 - Page 3*

**3. Approval of Committee Work Plan**

*BT Committee Work Plan - Page 10*

**4. Report on Operations - November 2014**

*BT Report on Operations - November 2014 - Page 17*

**5. Safety Report - November 2014**

*BT Safety Repoort - November 2014 - Page 30*

**6. E-ZPass Performance Report - November 2014**

*BT E-ZPass Performance Report - November 2014 - Page 33*

**7. Financial Report - November 2014**

*BT Financial Report - November 2014 - Page 39*

**8. Capital Program Project Status Report - December 2014**

*BT Capital Program Project Status Report - December 2014 - Page 55*

**9. Procurements**

*BT Procurements - January 2015 - Page 70*

**BT Competitive - January 2015**

*BT Competitive - January 2015 - Page 72*

Next Meeting: Monday, February 23, 2015 at 12:00 p.m.



# Bridges and Tunnels

---

---

## Minutes of Committee Meeting December 2014



**MONTHLY MEETING OF  
TRIBOROUGH BRIDGE AND TUNNEL AUTHORITY COMMITTEE**

**December 15, 2014**

**12:00 p.m.**

In attendance were the Honorable:

Allen P. Cappelli, Chairman  
Fernando Ferrer, MTA Vice Chairman  
Andrew Albert  
Mitchell H. Pally  
Polly Trottenberg

James Ferrara, President  
James Elkin, Controller  
James Foley, Vice President Office of Safety Programs and Initiatives  
James Fortunato, Executive Vice President and Chief of Operations  
Sharon Gallo-Kotcher, Vice President Administration  
Joseph Keane, Vice President and Chief Engineer  
Gavin Masterson, Chief Procurement Officer, Capital & Major Maintenance  
Patrick J. Parisi, Vice President Operations  
Donald Spero, Chief Financial Officer  
M. Margaret Terry, Senior Vice President and General Counsel

# **MONTHLY MEETING OF TRIBOROUGH BRIDGE AND TUNNEL AUTHORITY COMMITTEE**

**December 15, 2014**

Minutes of TBTA Committee held December 15, 2014 at 12:00 p.m. A list of those in attendance is attached.

## **Public Speakers**

There was one public speaker. Murray Bodin of Concerned Grandparents stated that the agenda should list a public comments period and he discussed roadway markings, signage and the toll plaza at the Henry Hudson Bridge.

## **Minutes**

Upon a motion duly made and seconded, the minutes of the Committee Meeting held on November 17, 2014 were approved.

## **Committee Work Plan**

Mr. Ferrara stated that there are no changes to the Committee Work Plan.

## **Report on Operations**

With regard to the Report on Operations for October 2014, Mr. Fortunato stated the following:

In October 2014 there were 25.2 million crossings, which was 0.6% more than the 25.0 million crossings in October 2013; rainfall amounts totaled 3.9 inches in October 2014 versus .4 inches in October 2013; gas prices averaged \$3.36 per gallon in October 2014, which was \$0.19 lower than October 2013; E-ZPass volume increased in October 2014 by 1.3%, while crossings using cash and other payment methods decreased by 3.2%; passenger car traffic was up by 0.5%; and other vehicle traffic increased by 1.4%.

Compared to the same periods last year, preliminary traffic figures for November 2014 are 1.0% higher.

## **Safety Report**

With regard to the Report on Safety for October 2014, Mr. Foley referred the Committee to the graphs and charts on pages 29 and 30 of the Committee Book that represent a five year summary of customer collisions, customer injuries, employee accident reports, lost time injuries and contractor injuries. Compared to the same period last year, the total customer collision rate decreased by 2.5% and the total customer injury collision rate decreased by 10.0%; the total number of contractor injuries increased by five (5); and the employee lost time injury year to date rate remains higher by 19% due to the number of incidents reported in April and May but has stabilized since June.

## **E-ZPass Performance Report**

With regard to the E-ZPass Performance Report for October 2014, Mr. Spero stated that the E-ZPass market share was 85.1% or 0.5% higher than the prior October. 18,318 E-ZPass accounts were opened in October, including 7,249 E-ZPass On-The-Go accounts, which is approximately 39% of the total number of accounts opened for the month. Since the On-The-Go program began, approximately 430,000 tags have been sold in the lanes.

## **Finance Report**

Mr. Spero stated that through October, toll revenue was \$21.454 million or 1.6% better than plan due to higher than forecast traffic. In October, toll revenue was \$5.718 million or 4.0% better than plan. Total expenses through October were \$32.613 million or 8.5% better than plan. Non-labor spending was \$23.655 million or 13.5% below plan. Labor expenses were \$8.958 million or 4.2% lower than plan due primarily due to lower

payroll expenses due to vacancies. Overtime was \$1.323 million or 7.1% below plan. Total support to mass transit through October was \$865.225 million, which was \$71.642 million or 9.0% better than plan.

### **2015 Budget and 2015-2018 Financial Plan Adoption – Action Item**

For 2014, Mr. Spero stated that toll revenue is projected at \$1.668 billion; non-reimbursable expenses are projected at \$482.7 million, with non-labor costs at \$229.8 million, labor costs at \$252.9 million. TBTA's support to mass transit is projected at \$931.5 million. In 2015, Mr. Spero stated that the toll revenue was projected at \$1.669 billion; non-reimbursable expenses projected at \$500 million, with non-labor costs at \$242.2 million, labor costs at \$257.8 million. TBTA's support to mass transit is projected at \$889.8 million. Budgeted headcount is 1,766. Debt service is projected at \$233 million in 2014 and \$254 million in 2015.

Upon a motion duly made and seconded, the Committee moved to the Finance Committee the Action Item regarding the 2015 Budget and 2015-2018 Financial Plan Adoption.

A copy of the staff summary, documents and details of the above items are filed with the minutes of the meeting of the TBTA Committee held this day.

### **Capital Program Status Report**

With regard to the Capital Program Status Report for November, Mr. Keane stated that there were fourteen (14) commitments made with a total value of \$28.0 million. Year-to-date, 139 commitments have been made with a total value of \$188.5 million against a plan for 141 commitments with a total value of \$839.3 million. After the November report was finalized, additional commitments were made with a total value of \$497 million bringing the year-to-date commitments to \$685.5 million, which included construction awards for the restoration of the Hugh L. Carey Tunnel and the reconstruction of the Bronx toll plaza structure at the Robert F. Kennedy Bridge. The award of the Hugh L. Carey Tunnel restoration project with a contract value of \$283.5 million represents the largest construction contract award in TBTA's Capital Program history. As of September, TBTA has had five (5) project completions with a value of \$156 million, which amounts to 100% of its planned 2014 project completions. In November, the Verrazano-Narrows Bridge toll plaza reconstruction project was completed seven months earlier than planned at a value of \$63.9 million bringing the 2014 completions to \$219.8 million. There were two (2) task level closeouts in November, bringing the year-to-date closeouts to 47 with a total value of \$65.4 million.

Commissioner Albert asked whether the rehabilitation work at the Hugh L. Carey Tunnel is eligible for Superstorm Sandy relief funding and Mr. Keane responded that it is eligible. Commissioner Cappelli inquired about the status of the legislation for the collection of tolls electronically to eliminate the toll booths. Mr. Ferrara stated that TBTA is working jointly with the New York State Thruway Authority and the Port Authority of New York and New Jersey to move the AET program forward. Ms. Terry stated that after much negotiation with representatives of the Governor's Office, Senate and Assembly, the toll violation enforcement bill was put in the preliminary budget last year but did not make it into the final budget. Both TBTA and the New York State Thruway Authority have resubmitted to the State the proposed legislation that represents the end result of the prior negotiations so that discussions on the legislation may be resumed based upon the progress that has been made.

### **Procurements**

Mr. Masterson stated that there are eight (8) procurements totaling \$31.868 million.

### **Non-Competitive Procurements**

Mr. Masterson stated that there are no non-competitive procurements.

### **Competitive Procurements**

Mr. Masterson stated that there are seven (7) competitive procurements totaling \$31.833 million as follows:

- Design-Build services for \$13.916 million to rehabilitate the Rockaway Point Boulevard and Jacob Riis pedestrian overpasses at the Marine Parkway Bridge;
- Two (2) personal service contracts for \$10.469 million - one for inspection services for the reconstruction and rehabilitation of the 125<sup>th</sup> Street Manhattan approach ramps to the Robert F. Kennedy (RFK) Bridge and the other for a feasibility study and conceptual design of the Manhattan plaza of the RFK Bridge and the associated ramps;
- Three (3) modifications to personal service contracts for \$6.261 million – one for funding construction support services for Superstorm Sandy restoration and mitigation and the rehabilitation of the Manhattan exit plaza at the Queens Midtown Tunnel; one for construction support services and additional design services for the reconstruction of the upper and lower level toll plazas and southbound approach to the Henry Hudson Bridge; and one for additional design services for the dehumidification system for the main cable splays and elimination of water infiltration at the Throgs Neck Bridge; and
- One public work modification for \$1.187 million to perform additional substructure and underwater repairs at the Marine Parkway Bridge.

**Competitive Requests for Proposals (Award of Purchase and Public Work Contracts)**

John P. Picone, Inc.	Contract No. MP-21 Provide Design/Build Services for Project MP-21, Rehabilitation of the Rockaway Point Boulevard and Jacob Riis Pedestrian Overpasses at the Marine Parkway-Gil Hodges Memorial Bridge.	\$13,916,000.00
----------------------	--	-----------------

**Personal Service Contracts**

Parsons/GPI	Contract No. PSC-14-2956 Provide Construction Administration and Inspection Services for Project RK-23A, Reconstruction and Rehabilitation of the Manhattan Approach Ramps to the RFK Bridge.	\$6,827,695.06
WSP-HNTB, JV	Contract No. PSC-14-2957 Perform a Feasibility Study and Conceptual Design for Project RK-65B, Reconstruction of Manhattan Plaza of the Robert F. Kennedy Bridge and Associated Ramps.	\$3,641,416.00

**Modifications to Personal Service Contracts and Miscellaneous Service Contracts Awarded as Contracts for Services**

URS Corporation-NY	Contract No. PSC-12-2920 Add funding for construction support services for Projects QM-40S, Superstorm Sandy Restoration and Mitigation and Projects QM-40/QM-18, Tunnel Leak Control and Rehabilitation of the Manhattan Exit Plaza at the Queens Midtown Tunnel.	\$4,510,552.17
--------------------	---	----------------

WSP/URS, a Joint Venture	Contract No. PSC-12-2906 Add funding for construction support services and additional design services for Project HH-88A, Reconstruction of the Upper and Lower Level Toll Plazas and Southbound Approach at the Henry Hudson Bridge.	\$1,397,203.11
Weidlinger Associates, Inc.	Contract No. PSC-13-2927 Perform additional design services for Project TN-60, Dehumidification System for the Main Cable Splays and Elimination of Water Infiltration at the Throgs Neck Bridge.	\$353,427.32

### **Modifications to Purchase & Public Works Contracts**

D'Onofrio General Contractors Corp.	Contract No. MP-06 Perform additional substructure and underwater work at the Marine Parkway - Gil Hodges Memorial Bridge.	\$1,186,865.49
-------------------------------------	---	----------------

### **Ratifications**

Mr. Masterson stated that there is one (1) ratification in the amount of \$34,691 for the repair by the New York City Department of Parks and Recreation (NYCDPR) of TBTA's storm drainage system which is on NYCDPR's property.

### **Ratification of Completed Procurement Actions**

New York City Department of Parks and Recreation Agreement	MOU-14-70 B&T is seeking the Board's ratification under the All-Agency Procurement Guidelines of the award of an agreement (Memorandum of Understanding) designated as MOU-14-70 to the New York City Department of Parks and Recreation (NYCDPR) for repairing a drainage system on its property for the amount of \$34,691.  While performing construction tasks at Inwood Hill Park adjacent to B&T's Northbound Parkway between Staff Street and Dyckman Street Bridges, NYCDPR discovered that runoff from a portion of the parkway drains into a B&T storm system that runs through a project site where NYCDPR is constructing an ADA Pedestrian ramp under its Contract MG-609. This drainage system was not functioning properly and repair was needed.	\$34,691.00
--	---	-------------



NYCDPR agreed to repair B&T's drainage system under its Contract MG-609 at the unit prices in its contract subject to the drainage system repair not delaying the NYCDPR work. Failure to act at this time would either leave a non-performing drainage system in place or be substantially more costly due to: (i) re-mobilization costs and (ii) a need to demolish and later reconstruct work being performed under NYCDPR's Contract MG-609.

Furthermore, the drainage system is on NYCDPR's property requiring special permits and access, which are costs that B&T will avoid. Therefore, on September 11, 2014 B&T provided a letter of intent to have this work performed. After completing the drainage repair work, NYCDPR provided a final amount for this work of \$34,691 based on the actual costs incurred. B&T has reviewed NYCDPR's costs and found them fair and reasonable. Costs incurred under this agreement must be paid directly to NYCDPR. Funding is available in B&T's Major Maintenance Project HHM-382.

Upon a motion duly made and seconded, the Committee approved and moved to the Board the competitive procurements and ratification.

#### **Adjournment**

There being no further business before the Committee, the meeting adjourned.

Respectfully submitted,

A handwritten signature in black ink that reads "Julia R. Christ". The signature is written in a cursive, flowing style.

Julia R. Christ  
Acting Assistant Secretary



# Bridges and Tunnels

---

---

## Committee Work Plan

---

---

# BRIDGES & TUNNELS COMMITTEE WORK PLAN

---

## I. RECURRING AGENDA ITEMS

### TOPIC

Approval of Minutes  
Committee Work Plan  
Report on Operations/Safety  
  
Financial Report  
E-ZPass Performance Report  
Capital Program Project Status Report  
  
Procurements  
Action Items (if any)

### Responsibility

Committee Chair & Members  
Committee Chair & Members  
Revenue Management/  
Health & Safety  
Controller/Planning & Budget  
Revenue Management  
Engineering/Planning &  
Budget  
Procurement & Materials

## II. SPECIFIC AGENDA ITEMS

### Responsibility

### February 2015

Preliminary Review of 2014 Operating Budget Results  
2015 Adopted Budget/Financial Plan 2015-2018  
2014 B&T Operating Surplus  
Customer Environment Survey – 4<sup>th</sup> Quarter 2014  
Diversity Report – 4<sup>th</sup> Quarter 2014

Planning & Budget  
Planning & Budget  
Controller  
Operations  
EEO

### March 2015

Annual Procurement Contracts Report

Procurement & Materials/  
Finance

### April 2015

Final Review of 2014 Year-End Operating Results

Planning & Budget

### May 2015

Customer Environment Survey – 1<sup>st</sup> Quarter 2015  
Diversity Report – 1<sup>st</sup> Quarter 2015

Operations  
EEO

### June 2015

No items scheduled.

### July 2015

No items scheduled.

### August 2015

No meeting scheduled.

### September 2015

Customer Environment Survey – 2nd Quarter 2015  
2016 Preliminary Budget  
Diversity Report – 2<sup>nd</sup> Quarter 2015

Operations  
Planning & Budget  
EEO

October 2015

2016 Preliminary Budget

Planning & Budget

November 2015

Customer Environment Survey – 3rd Quarter 2015

Operations

2016 Preliminary Budget

Planning & Budget

B&T Committee Charter – Review

MTA Board

Diversity Report – 3<sup>rd</sup> Quarter 2015

EEO

December 2015

2016 Proposed Committee Work Plan

Committee Chair & Members

2016 Proposed Final Budget

Planning & Budget

January 2016

Approval of 2016 Work Plan

Committee Chair & Members

## **BRIDGES & TUNNELS COMMITTEE WORK PLAN**

### **Detailed Summary**

#### **I. RECURRING**

##### **Approval of Minutes**

Approval of the official proceedings of the Committee Meeting.

##### **Report on Operations/Safety**

Summary of B&T's major service indicators, which includes graphs and tables depicting total traffic for all facilities, manual traffic, and E-ZPass traffic volume for the most recent rolling 12 months compared to the previous year's rolling 12 months. Customer and employee safety indicators are included in various graphs and tables. The Report on Operations/Safety is reported on a two-month lag, except in the month of September, at which time it includes the statistics for June and July.

##### **E-ZPass Performance Report**

Summary presentation of the performance of E-ZPass, which includes various E-ZPass statistics, such as performance at all facilities, weekday and weekend performance by facility, interoperability statistics, and customer service statistics, in addition to graphs depicting E-ZPass market share, transactions from other agencies, tags issued, and the tag swap program. The E-ZPass Performance Report is provided on a two-month lag, except in the month of September, at which time it includes the June and July reports.

##### **Financial Report**

Summary presentation of the financial indicators for the month, which includes the Balance Sheet for the reported month, Accrual Statement of Operations for the month and year-to-date, variance analysis, traffic volume and ridership information, and headcount charts. The Financial Report is provided on a two-month lag, except in the month of September, at which time it includes the June and July reports.

##### **Capital Program Project Status Report**

Summary of the status of the current capital program, including commitments, completions, and closeouts, in addition to graphic presentations of the commitments and completions for the plan vs. actuals for the year. The Capital Program Project Status Report is provided on a one-month lag, except in the month of September, at which time it includes the July and August reports.

##### **Procurements**

List of procurement action items requiring Board approval. The non-competitive items are listed first, followed by competitive items, and then ratifications. The list will indicate items that require a 2/3 vote and a majority vote of the Board for approval. Procurements are for the current month; in the month of September, the August and September procurements are included.

Staff summary documents presented to the Board for approval for items affecting business standards and practices.

## **II. SPECIFIC AGENDA ITEMS**

### **FEBRUARY 2015**

#### Preliminary Review of 2014 Operating Budget Results

The agency will present a brief review of its 2014 Operating Budget results.

#### 2015 Adopted Budget and February Financial Plan 2015-2018

The Agency will present its revised 2014 Adopted Budget and Financial Plan which will incorporate any changes made by the Board at the December 2014 meeting and any Agency technical adjustments.

#### 2014 B&T Operating Surplus

The Committee will recommend action to the Board.

#### Customer Environment Survey – 4th Quarter 2014

Review and discuss key customer service areas: improve customer service and traffic mobility at all facilities; ensure the safety of customers traveling over the bridges and tunnels; and enhance the customer environment of bridge and tunnel facilities.

#### Diversity Report – 4<sup>th</sup> Quarter 2014

Review and discuss workforce analysis and activities as presented to the Board's Diversity Committee Quarterly meeting.

### **MARCH 2015**

#### Annual Procurement Contracts Report

This report contains information on contracts awarded during the previous fiscal year and contracts open from the previous years as required by Section 2879 of the State Public Authorities Law.

### **APRIL 2015**

#### Final Review of 2014 Year-End Operating Results

The customary review of prior year's budget results and their implications for current and future budget performance will be presented to the Committee. Each Agency will present for inclusion in the Agenda materials, and be prepared to answer questions, on a review of its experience. The MTA Budget Division will prepare an overall review also for inclusion in the materials that draws MTA-wide conclusions.

### **MAY 2015**

#### Customer Environment Survey – 1st Quarter 2015

Review and discuss key customer service areas: improve customer service and traffic mobility at all facilities; ensure the safety of customers traveling over the bridges and tunnels; and enhance the customer environment of bridge and tunnel facilities.

#### Diversity Report – 1<sup>st</sup> Quarter 2015

Review and discuss workforce analysis and activities as presented to the Board's Diversity Committee Quarterly meeting.

## **JUNE 2015**

No items scheduled.

## **JULY 2015**

No items scheduled.

## **AUGUST 2015**

No meeting scheduled.

## **SEPTEMBER 2015**

### Customer Environment Survey – 2nd Quarter 2015

Review and discuss key customer service areas: improve customer service and traffic mobility at all facilities; ensure the safety of customers traveling over the bridges and tunnels; and enhance the customer environment of bridge and tunnel facilities.

### 2016 Preliminary Budget

Agency will present highlights of the Preliminary Budget to the Committee. Public comment will be accepted on the 2016 Preliminary Budget.

### Diversity Report – 2<sup>nd</sup> Quarter 2015

Review and discuss workforce analysis and activities as presented to the Board's Diversity Committee Quarterly meeting.

## **OCTOBER 2015**

### 2016 Preliminary Budget

Public comment will be accepted on the 2016 Preliminary Budget.

## **NOVEMBER 2015**

### Customer Environment Survey – 3rd Quarter 2015

Review and discuss key customer service areas: improve customer service and traffic mobility at all facilities; ensure the safety of customers traveling over the bridges and tunnels; and enhance the customer environment of bridge and tunnel facilities.

### 2016 Preliminary Budget

Public comment will be accepted on the 2016 Preliminary Budget.

### B&T Committee Charter - Review

Review and assess the adequacy of the Charter annually.

### Diversity Report – 3<sup>rd</sup> Quarter 2015

Review and discuss workforce analysis and activities as presented to the Board's Diversity Committee Quarterly meeting.

## **DECEMBER 2015**

### 2016 Proposed Committee Work Plan

The Committee Chair will present a draft Bridges and Tunnels Committee Work Plan for 2016 that will address initiatives to be reported throughout the year.

### 2016 Proposed Final Budget

The Committee will recommend action to the Board.

## **JANUARY 2016**

### Approval of Work Plan for 2016

The committee will have already received a draft work plan for 2016 at the December 2015 meeting. The committee will be requested to approve the amended work plan for the year.





# Bridges and Tunnels

---

---

## Report on Operations November 2014

---

---

## **MTA Bridges and Tunnels November 2014 Traffic Trends**

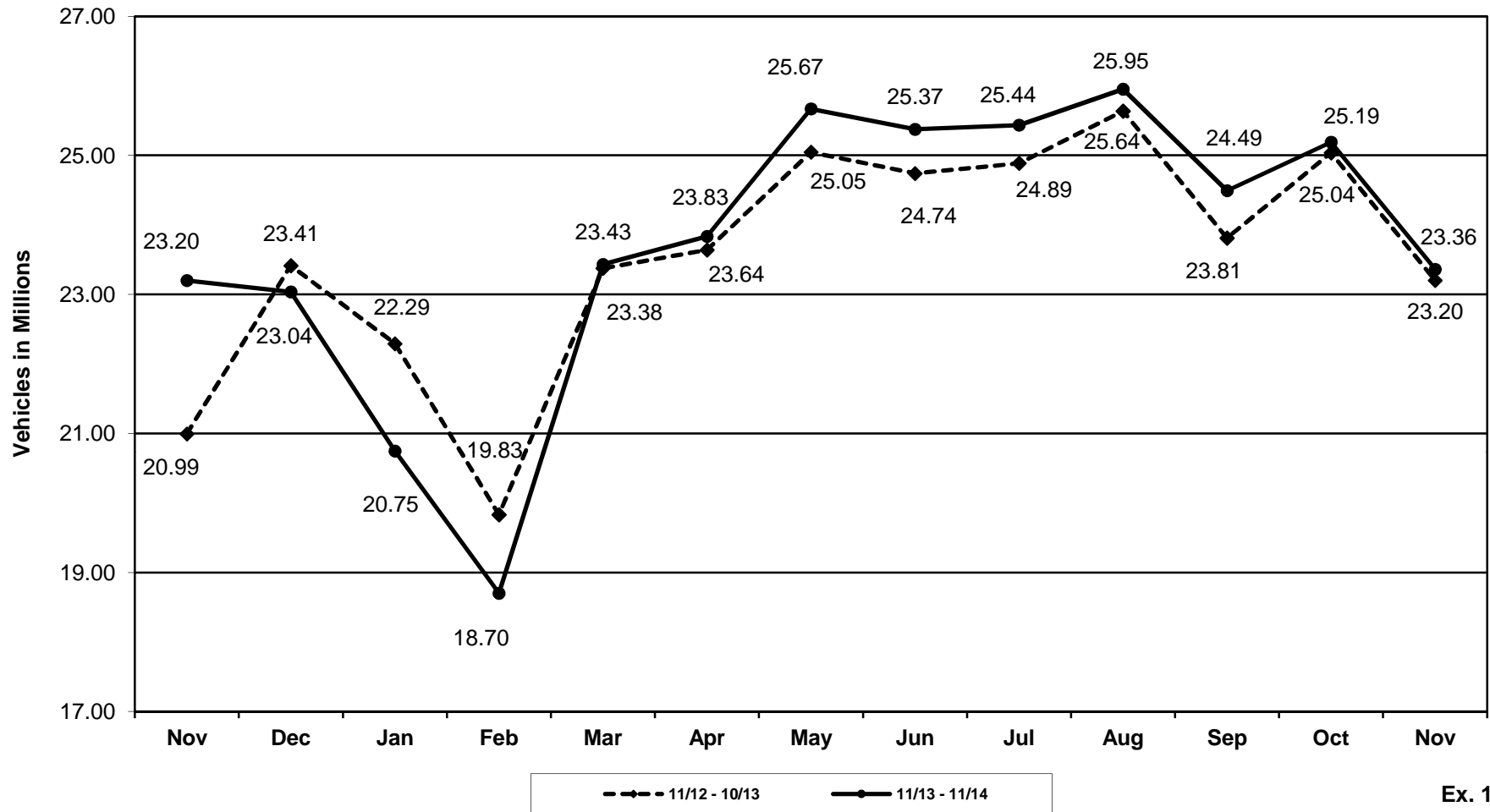
### **Summary**

Traffic was higher on a year-to-year basis, with 23.4 million crossings this month vs. 23.2 million crossings in November 2013 (Exhibit 1).

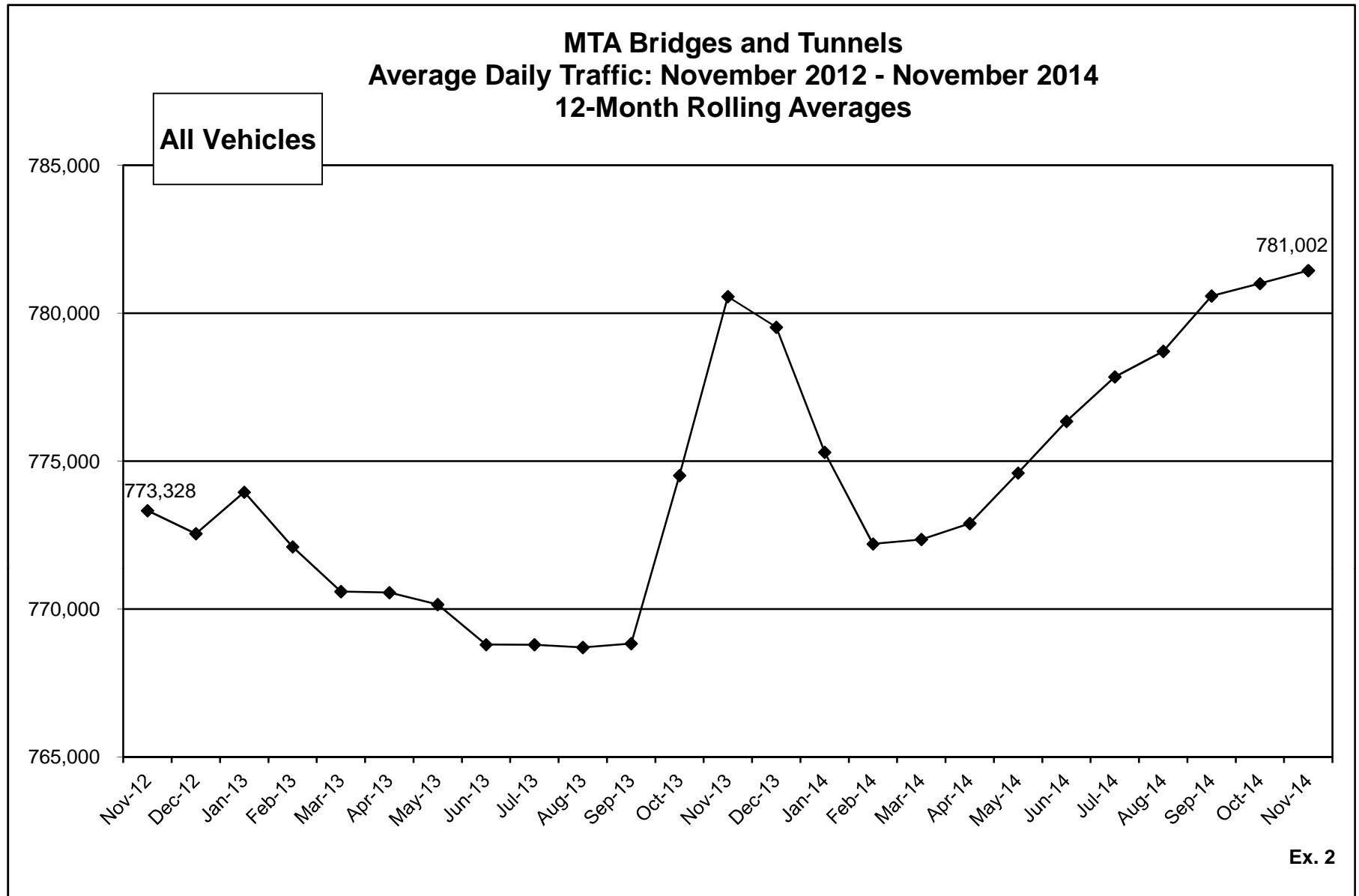
It rained 3.9 inches over 8 days this past November compared to 2.7 inches over 11 days in 2013. There was also a snow storm this November with a total accumulation of 1.3 inches. Gas prices averaged \$3.03 per gallon in November, which was \$0.47 lower than last year at this time.

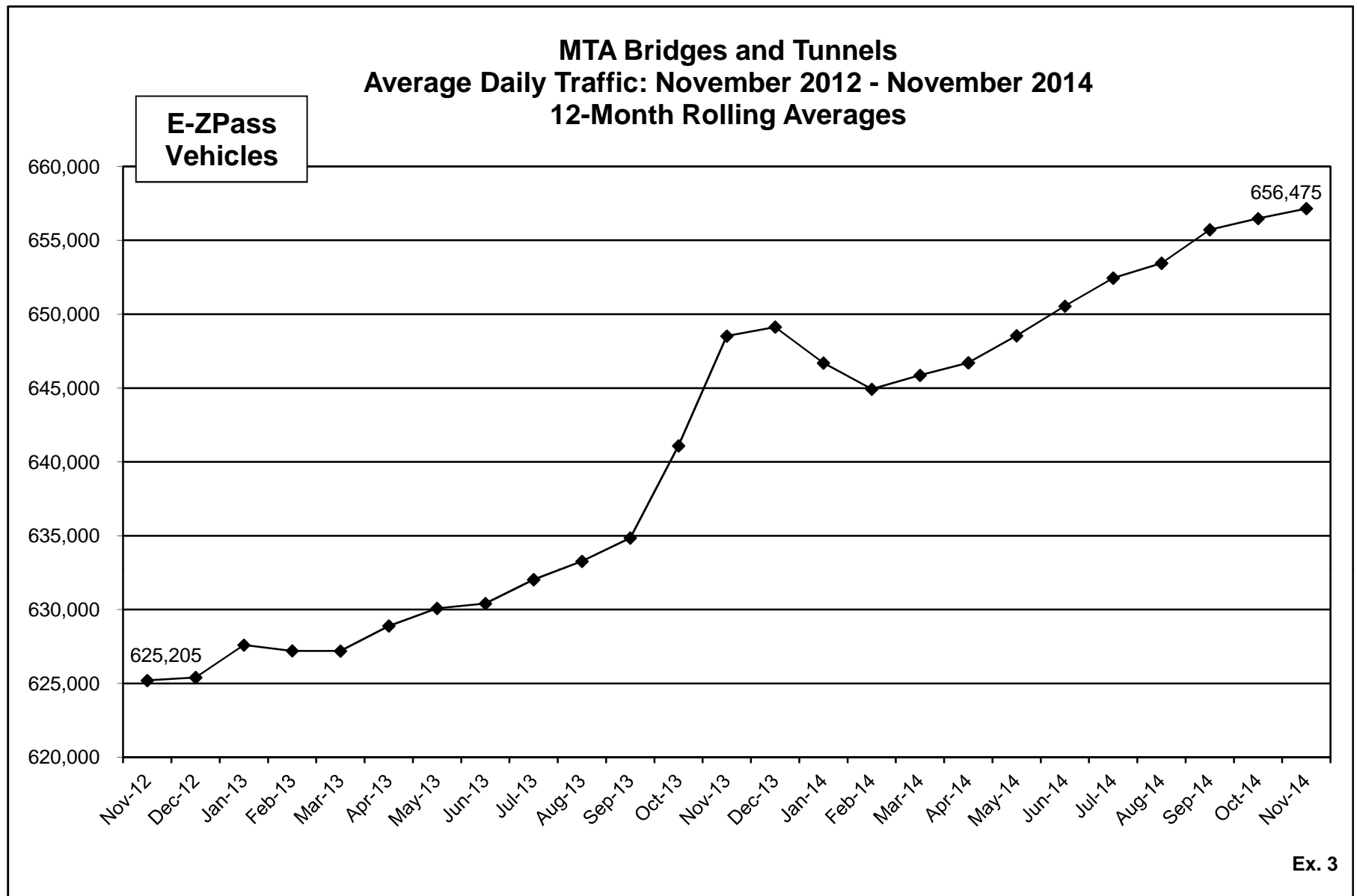
E-ZPass volume increased in November by 1.3% compared to last year, while crossings using cash and other payment methods declined 2.3% for the month (Exhibit 7). Passenger car travel increased 0.8% and other vehicle travel decreased 1.0% from last year (Exhibit 8).

# **MTA Bridges and Tunnels Traffic Volume - All Facilities Two Years Ending November 2014**

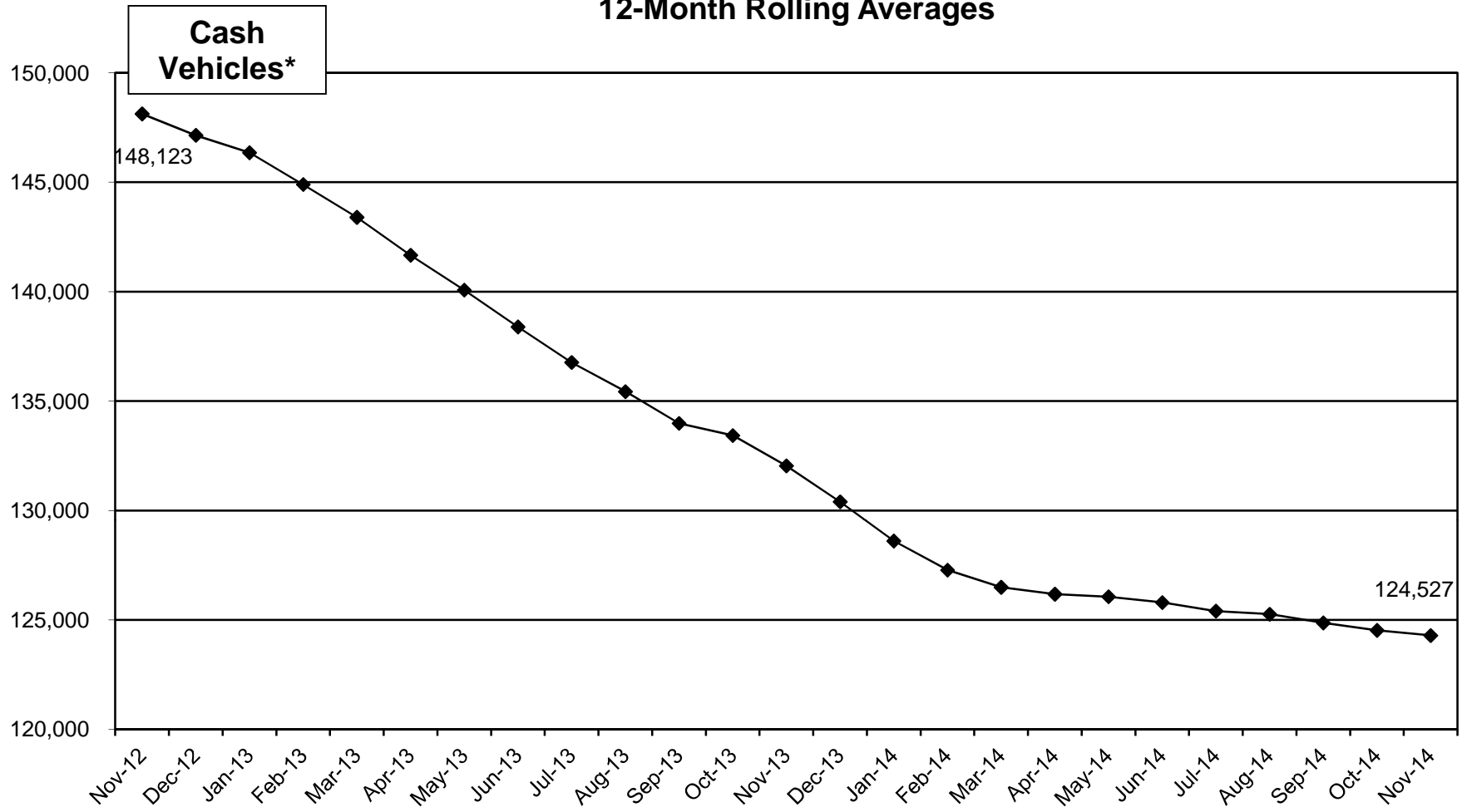


Ex. 1





# **MTA Bridges and Tunnels** **Average Daily Traffic: November 2012 - November 2014** **12-Month Rolling Averages**

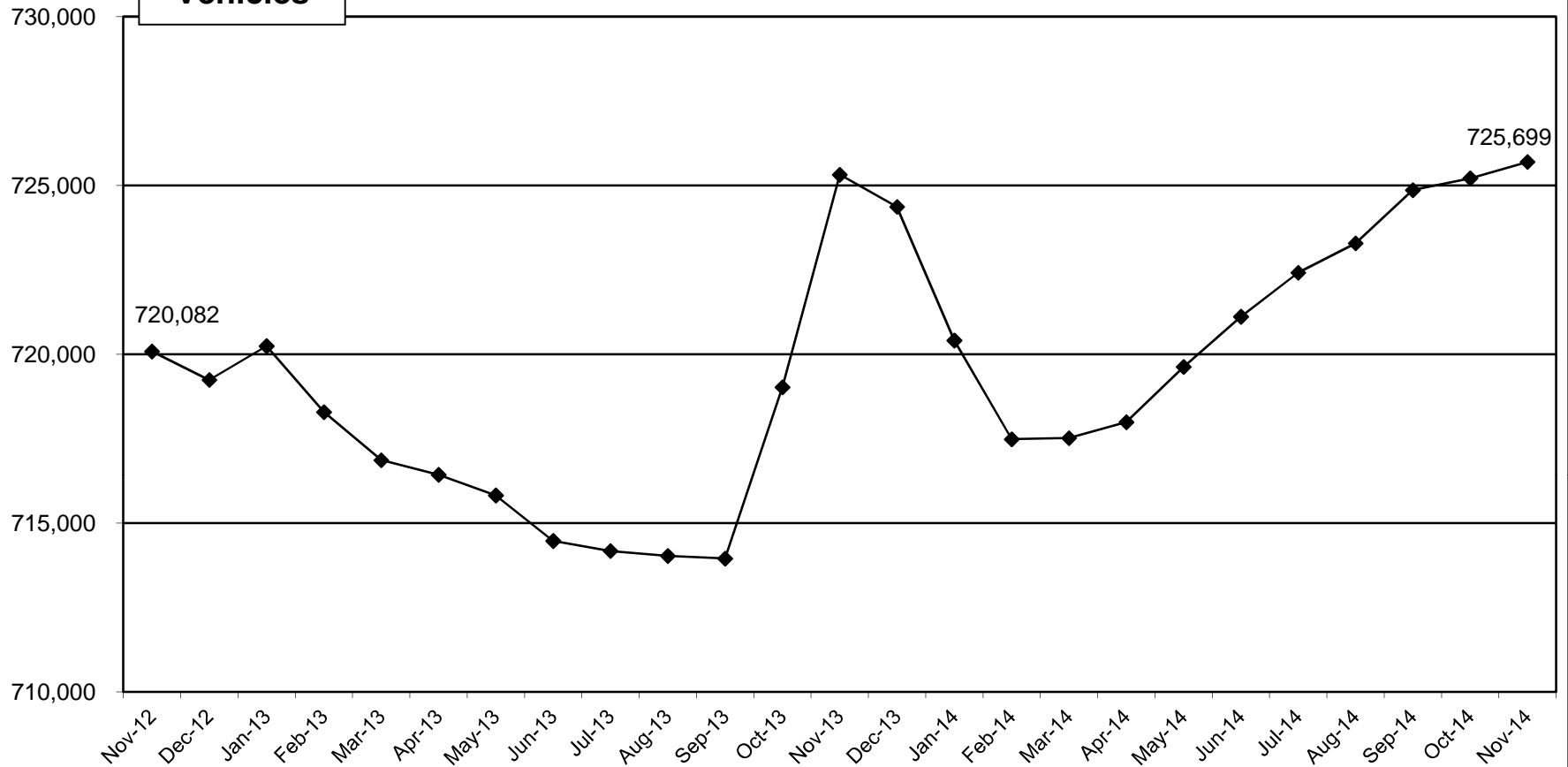


*\*Includes token, ticket and Tolls by Mail transactions.*

**Ex. 4**

# MTA Bridges and Tunnels Average Daily Traffic: November 2012 - November 2014 12-Month Rolling Averages

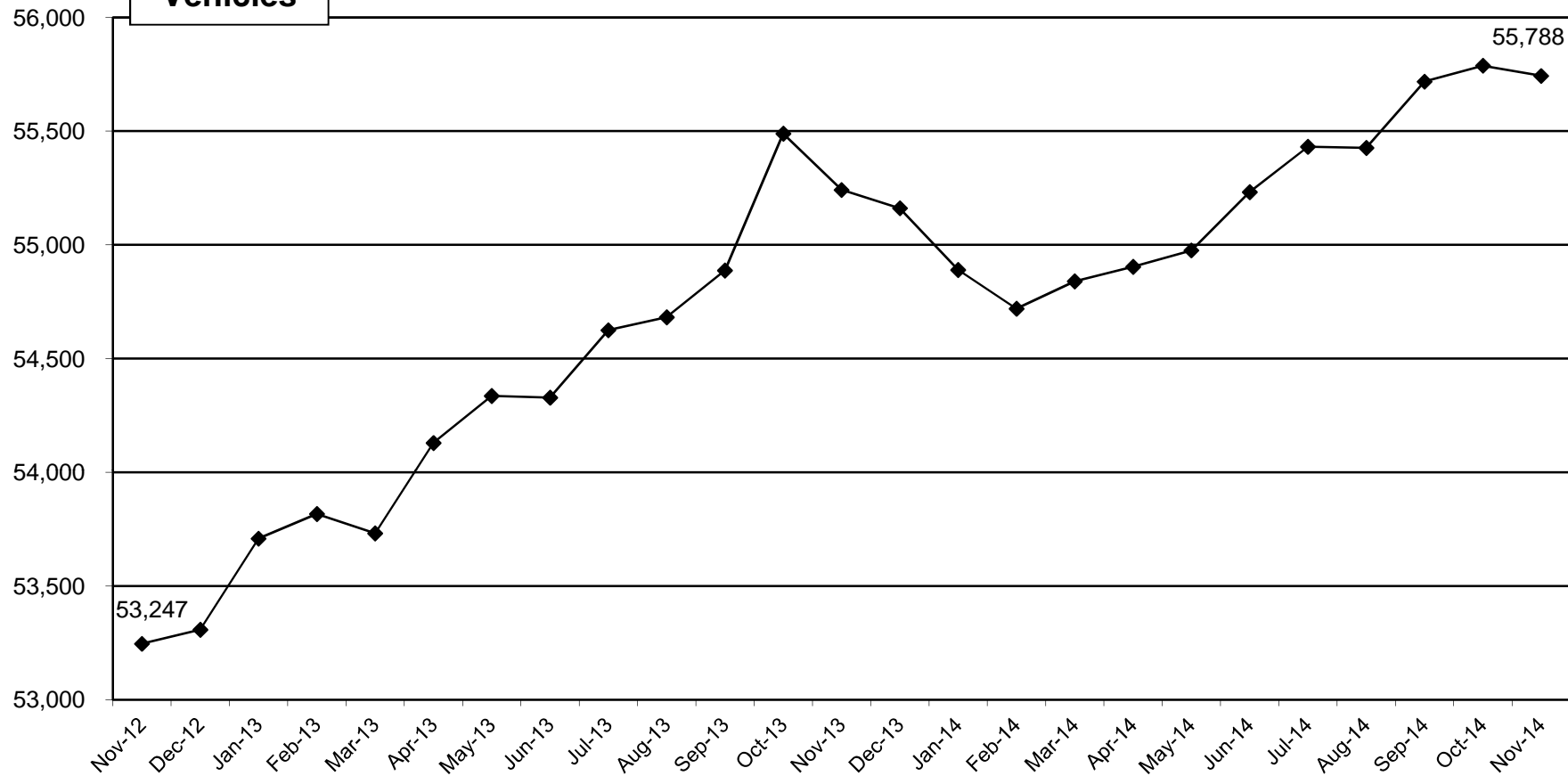
Passenger  
Vehicles



Ex. 5

# **MTA Bridges and Tunnels** **Average Daily Traffic: November 2012 - November 2014** **12-Month Rolling Averages**

**Other  
Vehicles**



**Ex. 6**



### MTA Bridges and Tunnels Percent Change in Average Daily Traffic by Toll Media

Corridor	Toll Media	November <sup>(1)</sup>	3 Months <sup>(2)</sup> (Sept-Nov)	6 Months <sup>(3)</sup> (Jun-Nov)	9 Months <sup>(4)</sup> (Mar-Nov)	12 Months <sup>(5)</sup> (Dec-Nov)
All Facilities	Total Vehicles	0.7%	1.4%	1.7%	1.5%	0.1%
	E-ZPass	1.3%	2.2%	2.6%	2.4%	1.3%
	Cash <sup>(6)</sup>	-2.3%	-3.1%	-2.6%	-3.0%	-5.9%
RFK Bridge-Bronx Plaza Bronx-Whitestone Bridge Throgs Neck Bridge	Total Vehicles	1.7%	2.1%	1.9%	1.7%	0.4%
	E-ZPass	2.4%	3.3%	3.2%	2.9%	1.9%
	Cash <sup>(6)</sup>	-1.3%	-2.4%	-2.6%	-2.8%	-5.3%
RFK Bridge-Manhattan Plaza Queens Midtown Tunnel Hugh L. Carey Tunnel	Total Vehicles	1.3%	2.1%	3.3%	3.6%	2.5%
	E-ZPass	1.9%	2.8%	3.9%	4.2%	3.3%
	Cash <sup>(6)</sup>	-2.2%	-2.4%	-0.6%	-0.2%	-2.6%
Verrazano-Narrows Bridge	Total Vehicles	-0.6%	-0.4%	-0.4%	-0.7%	-2.2%
	E-ZPass	0.1%	0.5%	0.4%	0.2%	-1.1%
	Cash <sup>(6)</sup>	-4.6%	-5.2%	-4.9%	-5.2%	-7.9%
Henry Hudson Bridge	Total Vehicles	-1.2%	0.9%	2.9%	2.9%	1.5%
	E-ZPass	-1.4%	1.1%	2.9%	3.1%	1.9%
	Tolls By Mail <sup>(7)</sup>	0.5%	-1.8%	2.9%	0.3%	-4.6%
Marine Parkway Bridge Cross Bay Bridge	Total Vehicles	-1.1%	0.3%	-0.4%	-2.0%	-5.1%
	E-ZPass	-0.4%	1.0%	0.6%	-0.8%	-2.8%
	Cash <sup>(6)</sup>	-5.2%	-4.5%	-5.5%	-8.9%	-16.8%

(1) November 2014 vs. November 2013.

(2) September 2014 to November 2014 vs. September 2013 to November 2013.

(3) June 2014 to November 2014 vs. June 2013 to November 2013.

(4) Marcy 2013 to November 2014 vs. March 2012 to November 2013.

(5) December 2013 to November 2014 vs. December 2012 to November 2013.

(6) Includes tokens and tickets.

(7) Cash prior to November 11, 2012.

**Ex. 7**

**MTA Bridges and Tunnels**  
**Percent Change in Average Daily Traffic by Vehicle Type**

Corridor	Vehicle Type	November <sup>(1)</sup>	3 Months <sup>(2)</sup> (Sept-Nov)	6 Months <sup>(3)</sup> (Jun-Nov)	9 Months <sup>(4)</sup> (Mar-Nov)	12 Months <sup>(5)</sup> (Dec-Nov)
All Facilities	Total Vehicles	0.7%	1.4%	1.7%	1.5%	0.1%
	Passenger	0.8%	1.3%	1.6%	1.5%	0.1%
	Other	-1.0%	2.3%	2.7%	2.4%	0.9%
RFK Bridge-Bronx Plaza Bronx-Whitestone Bridge Throgs Neck Bridge	Total Vehicles	1.7%	2.1%	1.9%	1.7%	0.4%
	Passenger	1.8%	2.0%	1.7%	1.4%	0.1%
	Other	0.4%	3.7%	4.0%	4.0%	2.5%
RFK Bridge-Manhattan Plaza Queens Midtown Tunnel Hugh L. Carey Tunnel	Total Vehicles	1.3%	2.1%	3.3%	3.6%	2.5%
	Passenger	1.5%	2.0%	3.2%	3.5%	2.4%
	Other	-0.9%	3.7%	4.8%	4.5%	3.9%
Verrazano-Narrows Bridge	Total Vehicles	-0.6%	-0.4%	-0.4%	-0.7%	-2.2%
	Passenger	-0.3%	-0.2%	-0.3%	-0.5%	-2.1%
	Other	-4.8%	-3.2%	-2.7%	-2.8%	-3.8%
Henry Hudson Bridge	Total Vehicles	-1.2%	0.9%	2.9%	2.9%	1.5%
	Passenger	-1.4%	0.8%	2.7%	2.8%	1.3%
	Other	12.9%	17.3%	17.1%	20.7%	21.0%
Marine Parkway Bridge Cross Bay Bridge	Total Vehicles	-1.1%	0.3%	-0.4%	-2.0%	-5.1%
	Passenger	-1.0%	0.2%	-0.4%	-1.9%	-4.6%
	Other	-2.7%	1.4%	0.1%	-5.1%	-12.8%

(1) November 2014 vs. November 2013.

(2) September 2014 to November 2014 vs. September 2013 to November 2013.

(3) June 2014 to November 2014 vs. June 2013 to November 2013.

(4) Marcy 2013 to November 2014 vs. March 2012 to November 2013.

(5) December 2013 to November 2014 vs. December 2012 to November 2013.

**Ex. 8**

## Supplemental Data Page for the Report on Operations

Traffic & Average Gas Price <sup>1</sup>			Weather <sup>2</sup>			Precipitation
<u>Month</u>	<u>Traffic</u>	<u>Gas</u>	<u>Average Temperature</u>	<u>Rain Inches</u>	<u>Snow Inches</u>	<u>Days</u>
Nov-12	20,993,843	\$3.92	45	1.4	1.1	5
Dec-12	23,412,942	\$3.74	43	4.3	0.4	18
Jan-13	22,290,223	\$3.69	36	2.6	1.0	10
Feb-13	19,831,970	\$3.89	34	3.8	13.1	13
Mar-13 <sup>3</sup>	23,376,021	\$3.88	41	2.4	6.1	9
Apr-13	23,638,588	\$3.73	53	1.2	-	10
May-13	25,045,252	\$3.70	64	5.0	-	10
Jun-13	24,738,988	\$3.71	74	8.2	-	13
Jul-13	24,886,530	\$3.82	81	2.8	-	11
Aug-13	25,636,599	\$3.82	76	2.0	-	10
Sep-13	23,810,071	\$3.76	68	3.2	-	6
Oct-13	25,036,991	\$3.55	61	0.4	-	5
Nov-13	23,200,297	\$3.50	46	2.7	0.2	11
Dec-13	23,035,975	\$3.61	38	4.5	7.6	12
Jan-14	20,747,317	\$3.59	29	2.4	16.7	14
Feb-14	18,701,703	\$3.61	32	4.9	27.8	11
Mar-14	23,431,567	\$3.70	37	3.7	0.4	7
Apr-14	23,834,773	\$3.77	62	1.5	-	9
May-14	25,668,919	\$3.84	64	4.7	-	13
Jun-14	25,374,933	\$3.85	73	3.7	-	7
Jul-14	25,435,425	\$3.84	77	4.0	-	9
Aug-14	25,951,945	\$3.67	76	3.5	-	8
<b>Sep-14</b>	<b>24,492,671</b>	<b>\$3.56</b>	71	1.2	-	6
<b>Oct-14</b>	<b>25,190,030</b>	<b>\$3.36</b>	61	3.9	-	9
<b>Nov-14</b>	<b>23,361,017</b>	<b>\$3.03</b>	51	3.9	1.3	8

Note: Bold numbers are preliminary.

**TABLE 2 - Year-over-Year Differences**

Traffic & Gas Monthly Inc/(Dec)			Weather Monthly Inc/(Dec)			Precipitation
<u>Month</u>	<u>Traffic</u>	<u>Gas</u>	<u>Average Temperature</u>	<u>Rain Inches</u>	<u>Snow Inches</u>	<u>Days</u>
<b>2013 vs. 2012</b>						
November	2,206,454	(\$0.42)	1	1.4	(0.9)	6
December	(376,967)	(\$0.13)	(5)	0.2	7.2	(6)
<b>2014 vs. 2013</b>						
January	(1,542,906)	(\$0.10)	(7)	(0.3)	15.7	4
February	(1,130,267)	(\$0.28)	(2)	1.1	14.7	(2)
March	55,546	(\$0.18)	(4)	1.3	(5.7)	(2)
April	196,185	\$0.04	9	0.4	-	(1)
May	623,667	\$0.14	0	(0.3)	-	3
June	635,945	\$0.14	(1)	(4.5)	-	(6)
July	548,895	\$0.02	(4)	1.2	-	(2)
August	315,346	(\$0.15)	0	1.5	-	(2)
September	682,600	(\$0.20)	3	(2.0)	-	0
October	153,039	(\$0.19)	0	3.4	-	4
November	160,720	(\$0.47)	5	1.2	1.1	(3)

1. Average gasoline (all types) price per gallon data are from the U.S. Bureau of Labor Statistics, NY-NJ-CT-PA area.

2. Local weather data are from the National Weather Service, LaGuardia Airport Station.

3. Toll Increase, March 3, 2013

## **Supplemental Data Page for Exhibits 2 through 6**

### **Average Daily Traffic: 12-Month Rolling Averages**

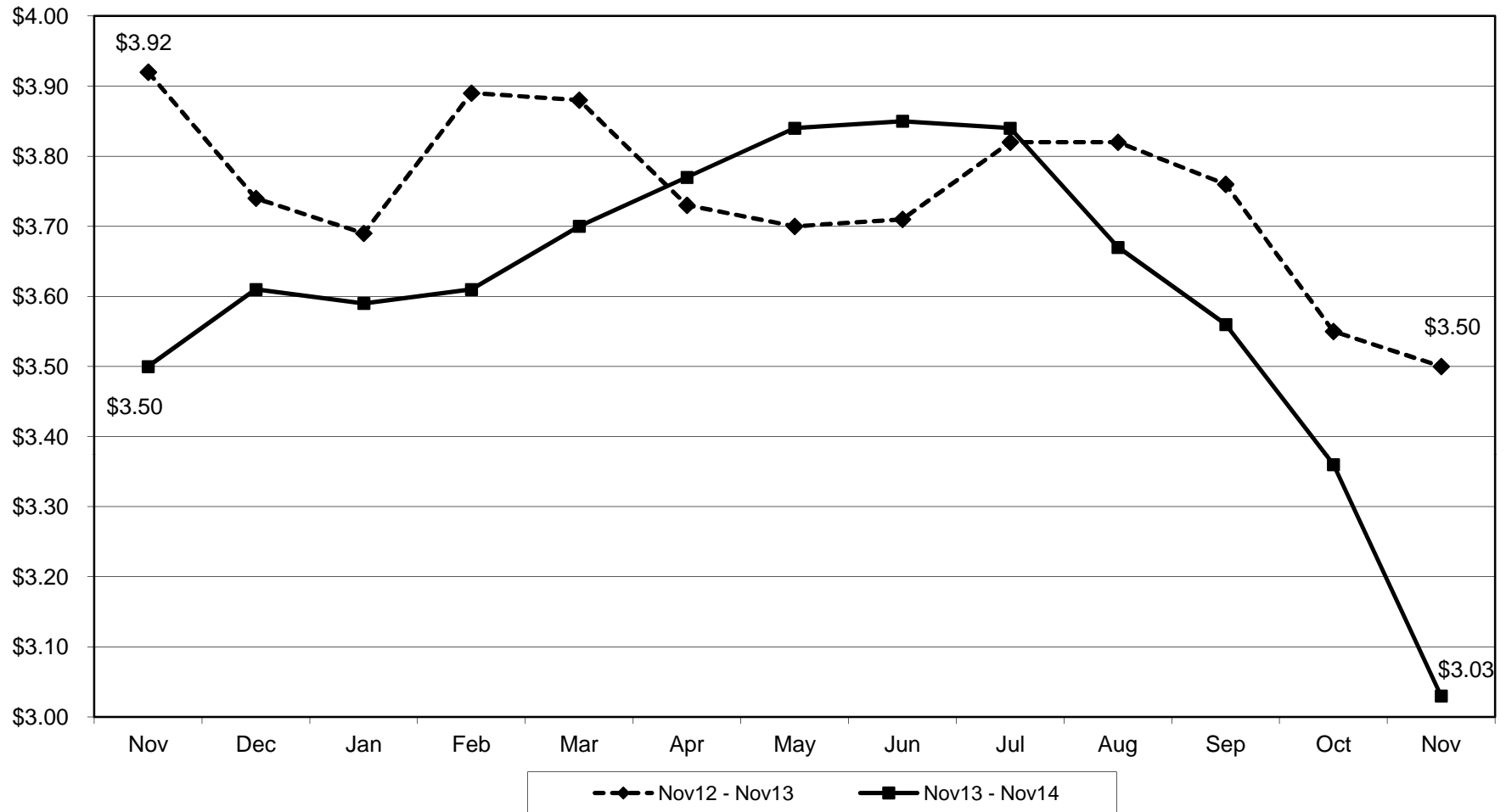
<u>Month</u>	<u>All Vehicles<sup>1</sup></u>	<u>E-ZPass</u>	<u>Cash<sup>2</sup></u>	<u>Passenger</u>	<u>Other</u>
Nov-12	773,328	625,205	148,123	720,082	53,247
Dec-12	772,550	625,406	147,144	719,241	53,309
Jan-13	773,953	627,602	146,351	720,244	53,709
Feb-13	772,106	627,210	144,896	718,288	53,817
Mar-13	770,595	627,198	143,397	716,862	53,732
Apr-13	770,559	628,893	141,667	716,430	54,130
May-13	770,155	630,084	140,071	715,819	54,336
Jun-13	768,801	630,409	138,391	714,472	54,329
Jul-13	768,798	632,031	136,767	714,172	54,625
Aug-13	768,707	633,271	135,436	714,025	54,682
Sep-13	768,836	634,851	133,984	713,948	54,888
Oct-13	774,515	641,086	133,429	719,026	55,489
Nov-13	780,560	648,520	132,040	725,318	55,242
Dec-13	779,527	649,128	130,400	724,366	55,161
Jan-14	775,300	646,691	128,610	720,410	54,890
Feb-14	772,204	644,921	127,282	717,484	54,720
Mar-14	772,356	645,861	126,495	717,516	54,840
Apr-14	772,893	646,713	126,181	717,989	54,904
May-14	774,602	648,539	126,063	719,626	54,976
Jun-14	776,344	650,545	125,799	721,112	55,232
Jul-14	777,848	652,443	125,405	722,417	55,432
Aug-14	778,712	653,447	125,265	723,285	55,427
<b>Sep-14</b>	<b>780,582</b>	<b>655,716</b>	<b>124,867</b>	<b>724,864</b>	<b>55,718</b>
<b>Oct-14</b>	<b>781,002</b>	<b>656,475</b>	<b>124,527</b>	<b>725,214</b>	<b>55,788</b>
<b>Nov-14</b>	<b>781,442</b>	<b>657,150</b>	<b>124,292</b>	<b>725,699</b>	<b>55,743</b>

*Note: Bold numbers are preliminary.*

1. Numbers may not add due to rounding.

2. Cash transactions include: tokens, tickets and beginning November 11, 2012, Tolls by Mail at the Henry Hudson Bridge

### Supplemental Graph Gas Prices in the NY-NJ-CT-PA Area November 2012 - November 2014





# Bridges and Tunnels

---

---

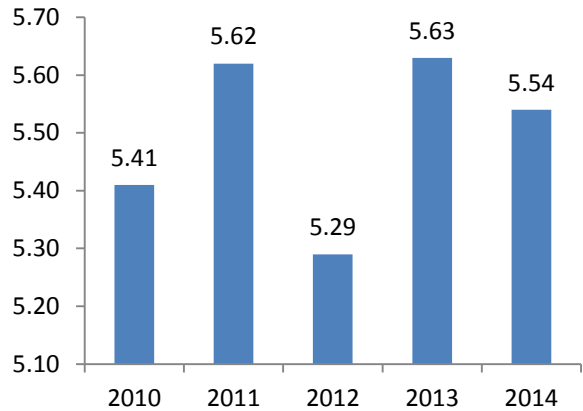
## Safety Report November 2014

---

---

# **Bridges and Tunnels**

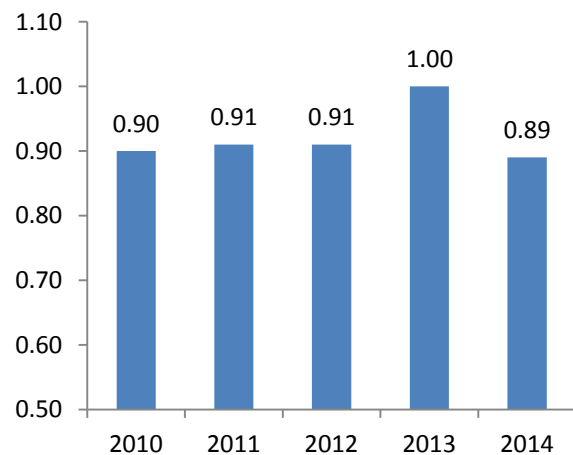
## 5 Yr Summary of Customer Collisions & Customer/Contractor Injuries thru November



### Total Customer Collisions

Year	Total Collisions	Collision Rate/M Vehicles
2010	1595	5.41
2011	1477	5.62
2012	1388	5.29
2013	1490	5.63
2014	1468	5.54

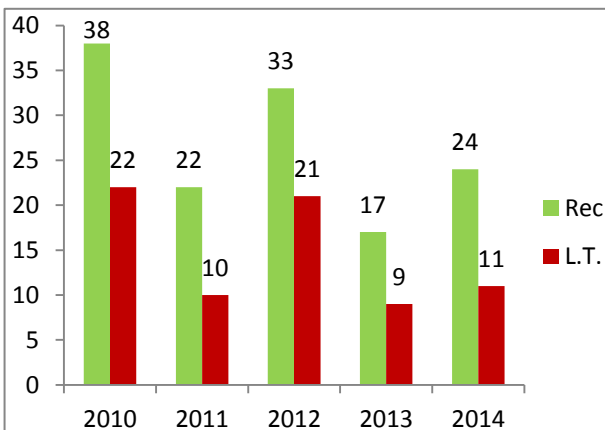
% change from last year: -1.6%  
5 year Average 5.50



### Total Injury Collisions

Year	Injury Collisions	Injury Rate/M Vehicles
2010	265	0.90
2011	239	0.91
2012	240	0.91
2013	264	1.00
2014	235	0.89

% change from last year: -11.0%  
5 year Average 0.92



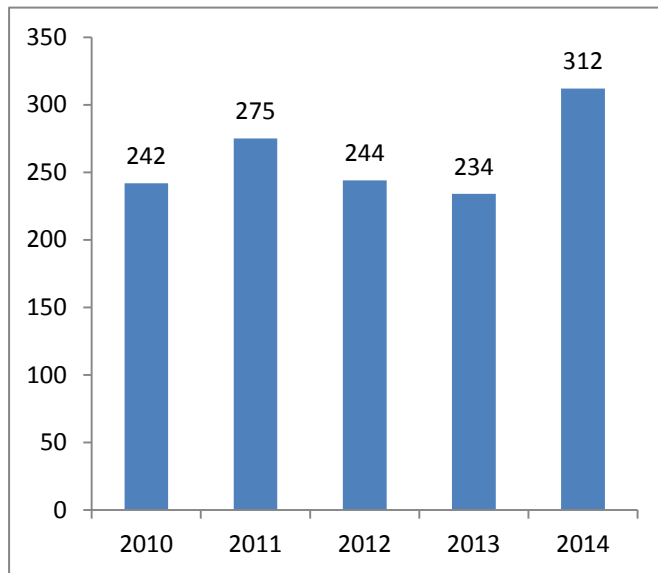
### Total Contractor Injuries

Year	Recordable Injuries	Lost Time Injuries
2010	38	22
2011	22	10
2012	33	21
2013	17	9
2014	24	11
% change from last yr	41.2%	22.2%



## Bridges and Tunnels

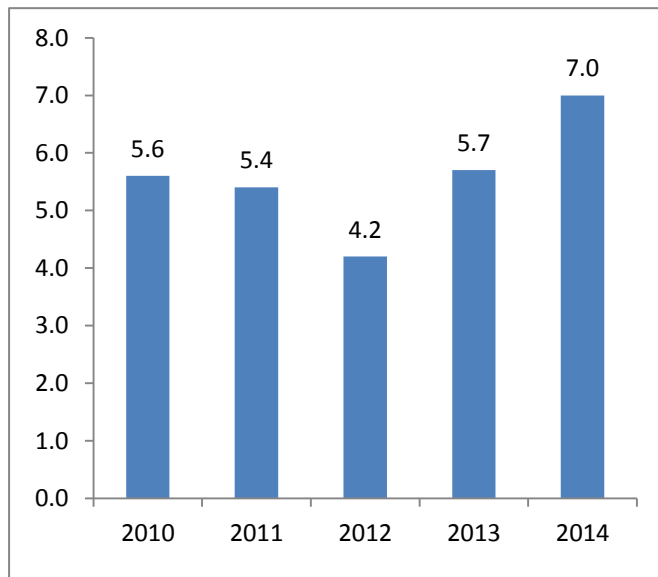
### 5 Yr Summary of Employee Accident Reports & Injuries thru November



Total Employee Accident Reports (C-2's)

Year	Total
2010	242
2011	275
2012	244
2013	234
2014	312

% change from last year: 33.3%  
5 year Average 261



Employee Lost Time Injuries

Year	Lost Time Injuries	Frequency Rate (Per 200,000 Hours)
2010	86	5.6
2011	80	5.4
2012	63	4.2
2013	78	5.7
2014	98	7.0

% change from last year: 22.8%  
5 year Average 5.58





# Bridges and Tunnels

---

---

## **E-ZPass Performance Report November 2014**



**MTA Bridges and Tunnels**  
**E-ZPASS Performance Report**  
**November 2014**  
Preliminary data subject to final audit

<b>E-ZPass Performance at All B&amp;T Facilities</b>			
	November 2014	Year to Date	November 2013
Total E-ZPass Traffic <sup>1</sup>	19,758,152	220,566,216	19,528,071
E-ZPass Market Share: Total	84.6%	84.1%	84.3%
Cars	84.0%	83.5%	83.7%
Trucks	92.2%	92.2%	91.9%

<b>Weekday E-ZPass Performance by Facility<sup>2</sup></b>			
Facility	November Average E-Zpass Weekday Traffic and Market Share		
	2014 Average Traffic	2014 Market Share	2013 Market Share
Bronx-Whitestone Bridge	85,877	81.4%	80.9%
Cross Bay Veterans Memorial Bridge	18,857	86.9%	86.5%
Henry Hudson Bridge	59,894	94.7%	94.5%
Hugh L. Carey Tunnel	47,313	90.4%	89.9%
Marine Parkway-Gil Hodges Memorial Bridge	18,188	89.2%	88.5%
Queens Midtown Tunnel	74,945	89.9%	89.5%
Robert F. Kennedy Bridge - Bronx Plaza	62,569	78.3%	77.8%
Robert F. Kennedy Bridge - Manhattan Plaza	78,006	86.4%	86.3%
Throgs Neck Bridge	97,017	85.1%	84.9%
Verrazano-Narrows Bridge <sup>1</sup>	<u>156,930</u>	<u>87.5%</u>	<u>86.7%</u>
All Facilities <sup>1</sup>	699,596	86.4%	86.0%

Notes:

1. At the Verrazano-Narrows Bridge (VNB), tolls are only collected in the westbound direction. These transactions are doubled to provide traffic statistics that are consistent with B&T's other facilities.
2. Weekday E-ZPass traffic and market share figures average data for all weekdays except for holidays

**MTA Bridges and Tunnels**  
**E-ZPASS Performance Report**  
**November 2014**  
Preliminary data subject to final audit

<b>Weekday Peak Hour E-ZPass Performance by Facility<sup>3</sup></b>				
Facility	November E-ZPass Market Share			
	2014 AM Peak	2013 AM Peak	2014 PM Peak	2013 PM Peak
Bronx-Whitestone Bridge	86.5%	86.0%	82.6%	81.5%
Cross Bay Veterans Memorial Bridge	90.3%	89.5%	87.7%	86.7%
Henry Hudson Bridge	96.1%	98.6%	95.5%	98.1%
Hugh L. Carey Tunnel	93.3%	92.8%	90.7%	89.9%
Marine Parkway-Gil Hodges Memorial Bridge	91.7%	91.4%	89.2%	88.9%
Queens Midtown Tunnel	91.3%	91.2%	89.6%	89.8%
Robert F. Kennedy Bridge - Bronx Plaza	83.7%	83.3%	79.3%	78.8%
Robert F. Kennedy Bridge - Manhattan Plaza	89.0%	88.9%	86.9%	87.5%
Throgs Neck Bridge	89.5%	89.2%	85.7%	85.4%
Verrazano-Narrows Bridge <sup>4</sup>	N/A	N/A	90.1%	89.5%
All Facilities	89.6%	89.5%	87.4%	87.3%

<b>Weekend E-ZPass Performance by Facility</b>			
Facility	November Average E-ZPass Weekend Traffic and Market Share		
	2014 Avg. Traffic	2014 Market Share	2013 Market Share
Bronx-Whitestone Bridge	77,205	75.3%	74.4%
Cross Bay Veterans Memorial Bridge	13,850	83.2%	82.5%
Henry Hudson Bridge	54,367	92.5%	93.0%
Hugh L. Carey Tunnel	35,570	86.4%	84.8%
Marine Parkway-Gil Hodges Memorial Bridge	13,279	86.4%	85.7%
Queens Midtown Tunnel	62,808	85.8%	85.3%
Robert F. Kennedy Bridge - Bronx Plaza	53,846	71.4%	70.4%
Robert F. Kennedy Bridge - Manhattan Plaza	62,941	81.7%	80.8%
Throgs Neck Bridge	87,363	80.2%	79.9%
Verrazano-Narrows Bridge <sup>1</sup>	<u>130,253</u>	81.5%	81.1%
All Facilities <sup>1</sup>	591,482	81.2%	80.6%

Notes:

3. Peak E-ZPass market shares report the market share figures for all vehicles during the highest overall traffic hour in the AM and PM periods at each facility.
4. AM peak figures are not compiled for the eastbound direction because tolls are collected in westbound lanes only.

**MTA Bridges and Tunnels  
E-ZPASS Performance Report  
November 2014**

Preliminary data subject to final audit

**E-ZPass Interoperability Statistics**

<b>B&amp;T E-ZPass Transactions From Other Agencies <sup>5</sup></b>			
Customer's E-ZPass Agency	November 2014 Total B&T E-ZPass Transactions	November 2014 Percentage of B&T Total Transactions	November 2013 Percentage of B&T Total Transactions
New York State Thruway Authority <sup>6</sup>	1,653,430	7.96%	7.88%
Port Authority of NY and NJ	1,097,738	5.29%	5.43%
New Jersey Toll Agencies <sup>7</sup>	1,137,412	5.48%	5.55%
Massachusetts Turnpike Authority <sup>8</sup>	135,960	0.65%	0.59%
Pennsylvania Turnpike Commission	84,048	0.40%	0.37%
Maryland Transportation Authority	36,654	0.18%	0.16%
Virginia Department of Transportation <sup>9</sup>	27,533	0.13%	0.10%
New Hampshire Department of Transportation	15,143	0.07%	0.07%
Delaware Department of Transportation	14,036	0.07%	0.05%
Other <sup>10</sup>	<u>43,095</u>	<u>0.21%</u>	<u>0.21%</u>
Total	4,245,049	20.44%	20.41%

<b>Other Agency B&amp;T E-ZPass Transactions</b>			
Agency Used By B&T Customers	November 2014	YTD 2014	November 2013
New York State Thruway Authority <sup>6</sup>	2,568,568	28,984,092	2,510,005
Port Authority of NY and NJ	3,180,298	35,227,445	3,128,111
New Jersey Toll Agencies <sup>7</sup>	5,291,992	59,486,499	4,969,860
New York State Bridge Authority	242,978	2,747,154	237,116
Massachusetts Turnpike Authority <sup>8</sup>	536,112	5,996,276	490,330
Pennsylvania Turnpike Commission	244,981	2,708,108	231,912
Maryland Transportation Authority	291,362	3,068,122	244,524
Virginia Department of Transportation <sup>9</sup>	152,561	1,746,579	129,931
New Hampshire Department of Transportation	86,569	1,201,511	81,934
Delaware Department of Transportation	210,931	2,727,088	208,534
Other <sup>10</sup>	<u>305,276</u>	<u>3,817,596</u>	<u>275,210</u>
Total	13,111,628	147,710,470	12,507,467

Notes:

5. "B&T E-ZPass Transactions From Other Agencies" excludes an estimate of VNB travel in the untolled eastbound direction in order to maintain comparability with the figures reported in "Others Agency B&T E-ZPass Transactions."
6. Includes Buffalo and Fort Erie Public Bridge Authority.
7. Includes South Jersey Transportation Authority, New Jersey Turnpike Authority, Garden State Parkway, Delaware River Port Authority, Delaware River and Bay Authority, Delaware River Joint Toll Bridge Commission and the Burlington County Bridge Commission.
8. Includes Massachusetts Port Authority.
9. Includes Dulles Greenway, Dulles Toll Road, Powhite Parkway Extension, RMA Expressway System, George P. Coleman Bridge, Chesapeake Bay Bridge and Tunnel Commission, and Chesapeake Expressway.
10. Other agencies include Illinois State Toll Highway Authority, Maine Turnpike Authority, West Virginia Parkway Authority, Indiana Toll Road Concession Company, and Rhode Island Bridge and Tunnel Authority, Ohio Turnpike Commission, North Carolina Turnpike Authority and Niagara Falls Bridge Commission.

**E-ZPASS Performance Report**  
**November 2014**  
Preliminary data subject to final audit

**E-ZPass Customer Service Statistics**

<b>MTA Bridges and Tunnels Customers</b>				
	November 2014	YTD 2014	YTD 2013	
Accounts Opened:				
Internet	7,299	88,615	76,871	
Walk-In	1,892	23,978	20,758	
Mail/Phone <sup>11</sup>	249	2,972	6,744	
On-The-Go	<u>6,682</u>	<u>82,801</u>	<u>117,926</u>	
Total Accounts Opened	16,122	198,366	222,299	
Total Active Accounts		2,708,058	2,586,417	
Number of E-ZPass Tags Issued <sup>12</sup>	39,275	525,004	476,668	
Total Active Tags <sup>13</sup>		4,359,151	4,179,090	
Total Reload Cards Distributed	3,046	109,458	76,141	
Reload Card % of Cash Replenishments	16.23%	16.16%	12.53%	

<b>Customer Service Indicators</b>				
	November 2014	YTD 2014	YTD 2013	
Phone Calls Answered by Customer Service Center:				
Customer Service Representatives	224,607	2,757,946	2,670,506	
Automated System	<u>500,598</u>	<u>5,271,808</u>	<u>4,217,290</u>	
Total Phone Calls Answered	725,205	8,029,754	6,887,796	
Average Phone Call Waiting Time (in min.):				
Customer Service Representatives	0.41	0.67	0.17	
Commercial Unit	0.69	0.70	0.35	
Avg. Monthly B&T E-ZPass Trips Per Account	5.64	5.96	6.17	
Average Number of Active Tags Per Account	1.61	1.62	1.62	

<b>E-ZPass Tag Replacement Program</b>				
	November 2014	YTD 2014	2011-2014	
Number of Replacement Tags Mailed	14,898	230,463	1,661,660	
Number of Tags Returned <sup>14</sup>	2,447	213,402	1,605,548	
Number of Tags Pending Return	N/A	N/A	56,112	

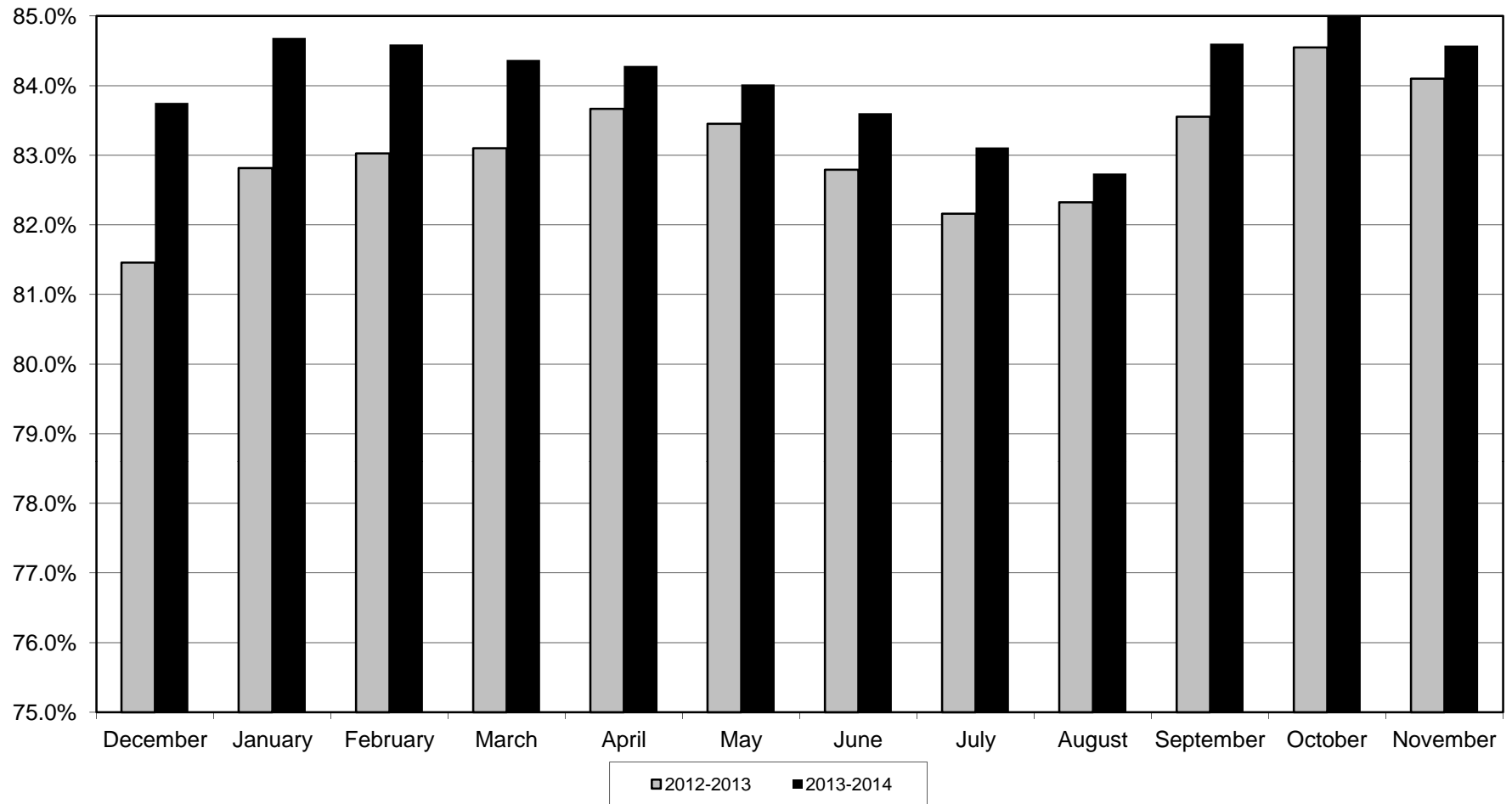
11. Phone enrollment for private accounts ended June 15, 2013.

12. Includes tags for new accounts, additional tags for existing accounts, and replacement of lost or stolen tags for existing accounts. Excludes tags processed and reported within the E-ZPass Tag Replacement Program, which replaces tags that are approaching the end of their useful service lives with new tags.

13. Includes tags linked to active accounts, new tags issued through the E-ZPass Tag Replacement Program, and the associated replaced tags currently moving through the program's return process.

14. Includes tags returned, reported as lost or stolen by the customer, and deactivated. Also, includes tags mailed in 2013 but returned in 2014.

# **MTA Bridges and Tunnels E-ZPass Market Shares December 2012 through November 2014**





# Bridges and Tunnels

---

## Financial Report November 2014

---

**MTA BRIDGES & TUNNELS****STATEMENT OF NET POSITION****As of November 30, 2014**

(in thousands)

**ASSETS AND DEFERRED OUTFLOWS OF RESOURCES****CURRENT ASSETS:**

Cash-Unrestricted	\$37,041
Investments:	
Unrestricted	125,798
Restricted	616,197
Accrued interest receivable	660
Accounts receivable	14,873
Tolls due from other agencies	25,240
Prepaid expenses	<u>2,899</u>
 Total current assets	 <u>822,708</u>

**NONCURRENT ASSETS:**

Investments:	
Restricted	104,738
Insurance recovery receivable	126,325
Facilities, less acc.dep of \$1,265,079	4,328,857
Capital lease 2 Broadway net acc. dep.	42,362
Derivative Hedge Assets	132,745
Security Deposits	<u>15,614</u>
 Total noncurrent assets	 <u>4,750,641</u>

<b>TOTAL ASSETS:</b>	<u><b>5,573,349</b></u>
----------------------	-------------------------

**DEFERRED OUTFLOWS OF RESOURCES:**

Accumulated decreases in fair value of derivative instruments	4,121
Defeasance costs	<u>165,117</u>

<b>TOTAL DEFERRED OUTFLOWS OF RESOURCES:</b>	<u><b>169,238</b></u>
--	-----------------------

<b>TOTAL ASSETS AND DEFERRED OUTFLOWS OF RESOURCES</b>	<u><u><b>\$5,742,587</b></u></u>
--	----------------------------------



**MTA BRIDGES & TUNNELS****STATEMENT OF NET POSITION****As of November 30, 2014**

(in thousands)

**LIABILITIES****CURRENT LIABILITIES:**

Interest Payable	\$31,997
Accounts Payable	52,104
Payable to MTA-CAP	34,109
Due to MTA-Operating Expenses	10,364
Due to NYCTA-Operating Expenses	823
Accrued salaries	13,567
Accrued Vac & Sick Benefits	16,275
Current portion of estimated liability arising from injury	3,318
Current portion of capital lease obligation	6,223
Pollution remediation projects	1,829
Due to New York City Transit Authority	44,008
Due to Metropolitan Transportation Authority	62,072
Pension Contribution Payable	13,379
Unredeemed Tolls	142,087
Tolls due to other agencies	40,076
E-ZPass Airport Toll Liability	<u>7,908</u>
Total current liabilities	<u>480,139</u>

**NONCURRENT LIABILITIES:**

Long term debt	8,971,361
Post Employment Benefits Other than Pensions	495,991
Estimated liability arising from injury	24,482
Capital lease obligations	137,015
Derivative Hedge Liabilities	137,714
Security deposits-Contra	<u>15,614</u>
Total noncurrent liabilities	<u>9,782,177</u>

**TOTAL LIABILITIES** 10,262,316**NET POSITION** (4,519,729) \***TOTAL LIABILITIES & NET POSITION** \$5,742,587

\*The negative Net Position of \$4,519,729 consists of various fund balances such as surplus monies and purchase of assets on behalf of MTA and NYCTA. The negative balance occurs because the assets are transferred to MTA and NYCTA during the year, and taken off the B&T Statement of Net Position; while the debt to purchase these assets remains as a liability on the Statement of Net Position of B&T.

**MTA BRIDGES AND TUNNELS**  
**JULY FINANCIAL PLAN - 2014 MID-YEAR FORECAST**  
**ACCRUAL STATEMENT of OPERATIONS by CATEGORY**  
**November 2014**

(\$ in millions)

	Nonreimbursable				Reimbursable				Total			
	Mid-Year Forecast	Actual	Favorable (Unfavorable)		Mid-Year Forecast	Actual	Favorable (Unfavorable)		Mid-Year Forecast	Actual	Favorable (Unfavorable)	
			Variance	Percent			Variance	Percent			Variance	Percent
<b>Revenue</b>												
Farebox Revenue	\$0.000	\$0.000	\$0.000	-	\$0.000	\$0.000	\$0.000	-	\$0.000	\$0.000	\$0.000	-
Vehicle Toll Revenue	136.474	136.288	(0.186)	(0.1)	0.000	0.000	0.000	-	136.474	136.288	(0.186)	(0.1)
Other Operating Revenue	1.082	2.686	1.604	*	0.000	0.000	0.000	-	1.082	2.686	1.604	*
Capital & Other Reimbursements	0.000	0.000	0.000	-	1.852	1.211	(0.641)	(34.6)	1.852	1.211	(0.641)	(34.6)
Investment Income	0.017	0.013	(0.004)	(21.6)	0.000	0.000	0.000	-	0.017	0.013	(0.004)	(21.6)
<b>Total Revenue</b>	<b>\$137.573</b>	<b>\$138.987</b>	<b>\$1.414</b>	<b>1.0</b>	<b>\$1.852</b>	<b>\$1.211</b>	<b>(\$0.641)</b>	<b>(34.6)</b>	<b>\$139.425</b>	<b>\$140.198</b>	<b>\$0.773</b>	<b>0.6</b>
<b>Expenses</b>												
<b>Labor:</b>												
Payroll	\$10.778	\$12.844	(\$2.066)	(19.2)	\$0.951	\$0.498	\$0.453	47.6	\$11.728	\$13.342	(\$1.614)	(13.8)
Overtime	1.846	1.566	0.280	15.2	0.052	0.000	0.052	100.0	1.898	1.566	0.332	17.5
Health and Welfare	2.686	2.226	0.460	17.1	0.198	0.126	0.072	36.3	2.884	2.352	0.532	18.4
OPEB Current Payment	1.348	1.323	0.025	1.9	0.000	0.000	0.000	-	1.348	1.323	0.025	1.9
Pensions	2.396	2.570	(0.174)	(7.3)	0.280	0.106	0.174	62.2	2.676	2.676	(0.000)	(0.0)
Other Fringe Benefits	0.944	0.877	0.067	7.1	0.124	0.061	0.063	50.9	1.068	0.938	0.130	12.2
Reimbursable Overhead	(0.247)	(0.420)	0.173	70.1	0.247	0.420	(0.173)	(70.1)	0.000	0.000	0.000	-
<b>Total Labor Expenses</b>	<b>\$19.750</b>	<b>\$20.986</b>	<b>(\$1.236)</b>	<b>(6.3)</b>	<b>\$1.852</b>	<b>\$1.211</b>	<b>\$0.641</b>	<b>34.6</b>	<b>\$21.602</b>	<b>\$22.197</b>	<b>(\$0.595)</b>	<b>(2.8)</b>
<b>Non-Labor:</b>												
Electric Power	\$0.579	\$0.380	\$0.199	34.3	\$0.000	\$0.000	\$0.000	-	\$0.579	\$0.380	\$0.199	34.3
Fuel	0.163	0.046	0.117	71.7	0.000	0.000	0.000	-	0.163	0.046	0.117	71.7
Insurance	1.387	1.199	0.188	13.6	0.000	0.000	0.000	-	1.387	1.199	0.188	13.6
Claims	0.000	0.000	0.000	-	0.000	0.000	0.000	-	0.000	0.000	0.000	-
Paratransit Service Contracts	0.000	0.000	0.000	-	0.000	0.000	0.000	-	0.000	0.000	0.000	-
Maintenance and Other Operating Contracts	13.358	9.846	3.512	26.3	0.000	0.000	0.000	-	13.358	9.846	3.512	26.3
Professional Service Contracts	3.844	3.378	0.466	12.1	0.000	0.000	0.000	-	3.844	3.378	0.466	12.1
Materials & Supplies	0.412	0.073	0.339	82.3	0.000	0.000	0.000	-	0.412	0.073	0.339	82.3
Other Business Expenses	2.297	1.839	0.458	19.9	0.000	0.000	0.000	-	2.297	1.839	0.458	19.9
<b>Total Non-Labor Expenses</b>	<b>\$22.039</b>	<b>\$16.761</b>	<b>\$5.278</b>	<b>23.9</b>	<b>\$0.000</b>	<b>\$0.000</b>	<b>\$0.000</b>	<b>-</b>	<b>\$22.039</b>	<b>\$16.761</b>	<b>\$5.278</b>	<b>23.9</b>
<b>Other Expense Adjustments:</b>												
Other	0.000	0.000	0.000	-	0.000	0.000	0.000	-	0.000	0.000	0.000	-
<b>Total Other Expense Adjustments</b>	<b>\$0.000</b>	<b>\$0.000</b>	<b>\$0.000</b>	<b>-</b>	<b>\$0.000</b>	<b>\$0.000</b>	<b>\$0.000</b>	<b>-</b>	<b>\$0.000</b>	<b>\$0.000</b>	<b>\$0.000</b>	<b>-</b>
<b>Total Expenses before Non-Cash Liability Adjs.</b>	<b>\$41.789</b>	<b>\$37.747</b>	<b>\$4.042</b>	<b>9.7</b>	<b>\$1.852</b>	<b>\$1.211</b>	<b>\$0.641</b>	<b>34.6</b>	<b>\$43.641</b>	<b>\$38.958</b>	<b>\$4.683</b>	<b>10.7</b>
Depreciation	\$8.720	\$8.435	\$0.285	3.3	\$0.000	\$0.000	\$0.000	-	\$8.720	\$8.435	\$0.285	3.3
OPEB Obligation	5.975	5.975	0.000	0.0	0.000	0.000	0.000	-	5.975	5.975	0.000	0.0
<b>Total Expenses after Non-Cash Liability Adjs.</b>	<b>\$56.484</b>	<b>\$52.157</b>	<b>\$4.327</b>	<b>7.7</b>	<b>\$1.852</b>	<b>\$1.211</b>	<b>\$0.641</b>	<b>34.6</b>	<b>\$58.336</b>	<b>\$53.368</b>	<b>\$4.968</b>	<b>8.5</b>
Less: Depreciation	\$8.720	\$8.435	\$0.285	3.3	\$0.000	\$0.000	\$0.000	-	\$8.720	\$8.435	\$0.285	3.3
Less: OPEB Obligation	5.975	5.975	0.000	0.0	0.000	0.000	0.000	-	5.975	5.975	0.000	0.0
<b>Total Expenses</b>	<b>\$41.789</b>	<b>\$37.747</b>	<b>\$4.042</b>	<b>9.7</b>	<b>\$1.852</b>	<b>\$1.211</b>	<b>\$0.641</b>	<b>34.6</b>	<b>\$43.641</b>	<b>\$38.958</b>	<b>\$4.683</b>	<b>10.7</b>
<b>Net Surplus/(Deficit)</b>	<b>\$95.783</b>	<b>\$101.240</b>	<b>\$5.457</b>	<b>5.7</b>	<b>\$0.000</b>	<b>\$0.000</b>	<b>\$0.000</b>	<b>-</b>	<b>\$95.783</b>	<b>\$101.240</b>	<b>\$5.457</b>	<b>5.7</b>

Differences are due to rounding.

\*Variance exceeds 100%

**MTA BRIDGES AND TUNNELS**  
**JULY FINANCIAL PLAN - 2014 MID-YEAR FORECAST**  
**ACCRUAL STATEMENT of OPERATIONS by CATEGORY**  
**November 2014**  
(\$ in millions)

	Nonreimbursable				Reimbursable				Total			
	Favorable (Unfavorable)				Favorable (Unfavorable)				Favorable (Unfavorable)			
	Mid-Year Forecast	Actual	Variance	Percent	Mid-Year Forecast	Actual	Variance	Percent	Mid-Year Forecast	Actual	Variance	Percent
<b>Net Income/(Deficit)</b>									<b>\$95.783</b>	<b>\$101.240</b>	<b>\$5.457</b>	<b>5.7</b>
Less: Capitalized Assets									1.992	0.909	1.083	54.4
Reserves									2.158	2.158	0.000	0.0
GASB Reserves									0.000	0.000	0.000	-
<b>Adjusted Net Income/(Deficit)</b>									<b>\$91.633</b>	<b>\$98.173</b>	<b>\$6.540</b>	<b>7.1</b>
Less: Debt Service									50.206	48.927	1.279	2.5
<b>Income Available for Distribution</b>									<b>\$41.427</b>	<b>\$49.246</b>	<b>\$7.820</b>	<b>18.9</b>
Distributable To:												
MTA - Investment Income									0.017	0.013	(0.004)	(21.6)
MTA - Distributable Income									25.035	29.118	4.083	16.3
NYCTR - Distributable Income									16.375	20.116	3.741	22.8
<b>Total Distributable Income</b>									<b>\$41.427</b>	<b>\$49.247</b>	<b>\$7.820</b>	<b>18.9</b>
<b>Support to Mass Transit:</b>												
Total Revenues									139.425	140.198	0.773	0.6
Less: Total Operating Expenses									<u>43.641</u>	<u>38.958</u>	<u>4.683</u>	10.7
<b>Net Operating Income/(Deficit)</b>									<b>\$95.783</b>	<b>\$101.240</b>	<b>\$5.457</b>	<b>5.7</b>
Deductions from Net Operating Income:												
Capitalized Assets									1.992	0.909	1.083	54.4
Reserves									2.158	2.158	0.000	0.0
B&T Debt Service									21.217	18.922	2.295	10.8
GASB Reserves									0.000	0.000	0.000	-
<b>Total Deductions From Operating Income</b>									<b>\$25.368</b>	<b>\$21.989</b>	<b>\$3.379</b>	<b>13.3</b>
<b>Total Support to Mass Transit</b>									<b>\$70.416</b>	<b>\$79.251</b>	<b>\$8.835</b>	<b>12.5</b>

**MTA BRIDGES AND TUNNELS**  
**JULY FINANCIAL PLAN - 2014 MID-YEAR FORECAST**  
**ACCRUAL STATEMENT of OPERATIONS by CATEGORY**  
**November Year-To-Date**

(\$ in millions)

	Nonreimbursable				Reimbursable				Total			
	Mid-Year Forecast	Actual	Favorable (Unfavorable)		Mid-Year Forecast	Actual	Favorable (Unfavorable)		Mid-Year Forecast	Actual	Favorable (Unfavorable)	
			Variance	Percent			Variance	Percent			Variance	Percent
<b>Revenue</b>												
Farebox Revenue	\$0.000	\$0.000	\$0.000	-	\$0.000	\$0.000	\$0.000	-	\$0.000	\$0.000	\$0.000	-
Vehicle Toll Revenue	1,515.728	1,536.996	21.268	1.4	0.000	0.000	0.000	-	1,515.728	1,536.996	21.268	1.4
Other Operating Revenue	18.080	22.401	4.321	23.9	0.000	0.000	0.000	-	18.080	22.401	4.321	23.9
Capital & Other Reimbursements	(0.000)	0.000	0.000	100.0	19.378	17.360	(2.018)	(10.4)	19.378	17.360	(2.018)	(10.4)
Investment Income	0.145	0.121	(0.024)	(16.5)	0.000	0.000	0.000	-	0.145	0.121	(0.024)	(16.5)
<b>Total Revenue</b>	<b>\$1,533.954</b>	<b>\$1,559.518</b>	<b>\$25.564</b>	<b>1.7</b>	<b>\$19.378</b>	<b>\$17.360</b>	<b>(\$2.018)</b>	<b>(10.4)</b>	<b>\$1,553.332</b>	<b>\$1,576.878</b>	<b>\$23.546</b>	<b>1.5</b>
<b>Expenses</b>												
<i>Labor:</i>												
Payroll	\$113.412	\$111.021	\$2.391	2.1	\$8.784	\$6.963	\$1.821	20.7	\$122.196	\$117.984	\$4.212	3.4
Overtime	20.099	18.658	1.441	7.2	0.355	0.141	0.214	60.3	20.454	18.799	1.655	8.1
Health and Welfare	26.712	23.976	2.736	10.2	1.979	1.758	0.221	11.2	28.691	25.734	2.957	10.3
OPEB Current Payment	14.754	14.742	0.012	0.1	0.000	0.000	0.000	-	14.754	14.742	0.012	0.1
Pensions	28.056	28.858	(0.802)	(2.9)	2.291	1.489	0.802	35.0	30.347	30.347	0.000	0.0
Other Fringe Benefits	14.898	15.640	(0.742)	(5.0)	1.121	0.851	0.270	24.1	16.019	16.491	(0.472)	(2.9)
Reimbursable Overhead	(4.848)	(6.158)	1.310	27.0	4.848	6.158	(1.310)	(27.0)	0.000	0.000	0.000	-
<b>Total Labor Expenses</b>	<b>\$213.082</b>	<b>\$206.737</b>	<b>\$6.345</b>	<b>3.0</b>	<b>\$19.378</b>	<b>\$17.360</b>	<b>\$2.018</b>	<b>10.4</b>	<b>\$232.460</b>	<b>\$224.097</b>	<b>\$8.363</b>	<b>3.6</b>
<i>Non-Labor:</i>												
Electric Power	\$6.766	\$5.318	\$1.448	21.4	\$0.000	\$0.000	\$0.000	-	\$6.766	\$5.318	\$1.448	21.4
Fuel	2.797	2.622	0.175	6.2	0.000	0.000	0.000	-	2.797	2.622	0.175	6.2
Insurance	14.394	13.329	1.065	7.4	0.000	0.000	0.000	-	14.394	13.329	1.065	7.4
Claims	0.135	0.135	0.000	0.0	0.000	0.000	0.000	-	0.135	0.135	0.000	0.0
Paratransit Service Contracts	0.000	0.000	0.000	-	0.000	0.000	0.000	-	0.000	0.000	0.000	-
Maintenance and Other Operating Contracts	105.239	87.107	18.132	17.2	0.000	0.000	0.000	-	105.239	87.107	18.132	17.2
Professional Service Contracts	39.001	32.593	6.408	16.4	0.000	0.000	0.000	-	39.001	32.593	6.408	16.4
Materials & Supplies	4.175	2.862	1.313	31.5	0.000	0.000	0.000	-	4.175	2.862	1.313	31.5
Other Business Expenses	24.162	23.770	0.392	1.6	0.000	0.000	0.000	-	24.162	23.770	0.392	1.6
<b>Total Non-Labor Expenses</b>	<b>\$196.669</b>	<b>\$167.736</b>	<b>\$28.933</b>	<b>14.7</b>	<b>\$0.000</b>	<b>\$0.000</b>	<b>\$0.000</b>	<b>-</b>	<b>\$196.669</b>	<b>\$167.736</b>	<b>\$28.933</b>	<b>14.7</b>
<b><u>Other Expense Adjustments</u></b>												
Other	0.000	0.000	0.000	-	0.000	0.000	0.000	-	0.000	0.000	0.000	-
<b>Total Other Expense Adjustments</b>	<b>\$0.000</b>	<b>\$0.000</b>	<b>\$0.000</b>	<b>-</b>	<b>\$0.000</b>	<b>\$0.000</b>	<b>\$0.000</b>	<b>-</b>	<b>\$0.000</b>	<b>\$0.000</b>	<b>\$0.000</b>	<b>-</b>
<b>Total Expenses before Non-Cash Liability Adjs.</b>	<b>\$409.751</b>	<b>\$374.473</b>	<b>\$35.278</b>	<b>8.6</b>	<b>\$19.378</b>	<b>\$17.360</b>	<b>\$2.018</b>	<b>10.4</b>	<b>\$429.129</b>	<b>\$391.833</b>	<b>\$37.296</b>	<b>8.7</b>
Depreciation	\$95.669	\$94.242	\$1.427	1.5	\$0.000	\$0.000	\$0.000	-	\$95.669	\$94.242	\$1.427	1.5
OPEB Obligation	60.969	60.969	0.000	0.0	0.000	0.000	0.000	-	60.969	60.969	0.000	0.0
<b>Total Expenses after Non-Cash Liability Adjs.</b>	<b>\$566.389</b>	<b>\$529.684</b>	<b>\$36.705</b>	<b>6.5</b>	<b>\$19.378</b>	<b>\$17.360</b>	<b>\$2.018</b>	<b>10.4</b>	<b>\$585.767</b>	<b>\$547.044</b>	<b>\$38.723</b>	<b>6.6</b>
Less: Depreciation	\$95.669	\$94.242	\$1.427	1.5	\$0.000	\$0.000	\$0.000	-	\$95.669	\$94.242	\$1.427	1.5
Less: OPEB Obligation	60.969	60.969	0.000	0.0	0.000	0.000	0.000	-	60.969	60.969	0.000	0.0
<b>Total Expenses</b>	<b>\$409.751</b>	<b>\$374.473</b>	<b>\$35.278</b>	<b>8.6</b>	<b>\$19.378</b>	<b>\$17.360</b>	<b>\$2.018</b>	<b>10.4</b>	<b>\$429.129</b>	<b>\$391.833</b>	<b>\$37.296</b>	<b>8.7</b>
<b>Net Surplus/(Deficit)</b>	<b>\$1,124.203</b>	<b>\$1,185.045</b>	<b>\$60.842</b>	<b>5.4</b>	<b>\$0.000</b>	<b>\$0.000</b>	<b>\$0.000</b>	<b>-</b>	<b>\$1,124.203</b>	<b>\$1,185.045</b>	<b>\$60.842</b>	<b>5.4</b>

Differences are due to rounding.

\*Variance exceeds 100%

**MTA BRIDGES AND TUNNELS**  
**JULY FINANCIAL PLAN - 2014 MID-YEAR FORECAST**  
**ACCRUAL STATEMENT of OPERATIONS by CATEGORY**  
**November Year-To-Date**  
(\$ in millions)

	Nonreimbursable				Reimbursable				Total			
	Mid-Year Forecast	Actual	Favorable (Unfavorable)		Mid-Year Forecast	Actual	Favorable (Unfavorable)		Mid-Year Forecast	Actual	Favorable (Unfavorable)	
			Variance	Percent			Variance	Percent			Variance	Percent
<b>Net Income/(Deficit)</b>									<b>\$1,124.203</b>	<b>\$1,185.045</b>	<b>\$60.842</b>	<b>5.4</b>
Less: Capitalized Assets									15.851	12.375	\$3.476	21.9
Reserves									23.737	23.737	0.000	0.0
GASB Reserves									0.000	0.000	0.000	-
<b>Adjusted Net Income/(Deficit)</b>									<b>\$1,084.615</b>	<b>\$1,148.933</b>	<b>\$64.318</b>	<b>5.9</b>
Less: Debt Service									547.661	532.333	15.328	2.8
<b>Income Available for Distribution</b>									<b>\$536.954</b>	<b>\$616.600</b>	<b>\$79.646</b>	<b>14.8</b>
Distributable To:												
MTA - Investment Income									0.145	0.121	(0.024)	(16.5)
MTA - Distributable Income									317.566	357.453	39.887	12.6
NYCTR - Distributable Income									219.243	259.026	39.783	18.1
<b>Total Distributable Income</b>									<b>\$536.953</b>	<b>\$616.600</b>	<b>\$79.647</b>	<b>14.8</b>
<b>Support to Mass Transit:</b>												
Total Revenues									1,553.332	1,576.878	23.546	1.5
Less: Total Operating Expenses									<u>429.129</u>	<u>391.833</u>	<u>37.296</u>	8.7
<b>Net Operating Income/(Deficit)</b>									<b>\$1,124.203</b>	<b>\$1,185.045</b>	<b>\$60.842</b>	<b>5.4</b>
Deductions from Net Operating Income:												
Capitalized Assets									15.851	12.375	3.476	21.9
Reserves									23.737	23.737	0.000	0.0
B&T Debt Service									220.616	204.457	16.159	7.3
GASB Reserves									0.000	0.000	0.000	-
<b>Total Deductions From Operating Income</b>									<b>\$260.204</b>	<b>\$240.569</b>	<b>\$19.635</b>	<b>7.5</b>
<b>Total Support to Mass Transit</b>									<b>\$863.999</b>	<b>\$944.476</b>	<b>\$80.477</b>	<b>9.3</b>

**MTA BRIDGES AND TUNNELS**  
**JULY FINANCIAL PLAN - 2014 MID-YEAR FORECAST**  
**EXPLANATION OF VARIANCES BETWEEN BUDGET AND ACTUAL ACCRUAL BASIS**  
(\$ in millions)

Generic Revenue or Expense Category	Favorable/ (Unfavorable) Variance		November 2014	Favorable/ (Unfavorable) Variance		Year-to-Date
	\$	%	Reason for Variance	\$	%	Reason for Variance
Nonreimbursable						
Vehicle Toll Revenue	(0.186)	-0.1%	Lower toll revenue due to a slightly lower actual average toll compared to the monthly forecast	21.268	1.4%	Higher toll revenue primarily due to 1.3% increase in traffic.
Other Operating Revenue	1.604		Higher Other Operating Revenue primarily due to higher E-ZPass administrative fees (\$1.181M), additional revenues from the auctioning of fleet vehicles (\$0.185M), and higher wireless communication equipment rental fees at the Hugh L. Carey Tunnel and the Queens Midtown Tunnel (\$0.158M).	4.321	23.9%	Higher Other Operating Revenue primarily due to higher E-ZPass administrative fees (\$2.856M), and higher wireless communication equipment rental fees at the Hugh L. Carey Tunnel and the Queens Midtown Tunnel (\$0.666M) and additional revenues from the auctioning of fleet vehicles (\$0.415M).
Investment Income	(0.004)	-21.6%	Minor variance.	(0.024)	-16.5%	Minor variance.
Payroll	(2.066)	-19.2%	Higher payroll expenses due to timing of labor contractual payments (-\$1.865M)	2.391	2.1%	Lower payroll expenses against the YTD forecast allocation due to vacancies.
Overtime	0.280	15.2%	See overtime tables.	1.441	7.2%	See overtime tables.
Health and Welfare	0.460	17.1%	Lower Welfare Plan expenses primarily due to vacancies against the monthly forecast allocation.	2.736	10.2%	Lower Welfare Plan expenses primarily due to vacancies against the YTD forecast allocation.
OPEB Current Payment	0.025	1.9%	Minor variance.	0.012	0.1%	Minor variance.
Pensions	(0.174)	-7.3%	Minor variance.	(0.802)	-2.9%	Minor variance.
Other Fringe Benefits	0.067	7.1%	Minor variance.	(0.742)	-5.0%	Higher expenses primarily due to additional uniform allowance stipends for Bridge and Tunnel Officers, paid retroactively to 2009 (-\$1.140M), offset by lower Social Security taxes (\$0.700M) due to vacancies.
Electric Power	0.199	34.3%	Minor variance.	1.448	21.4%	Lower electricity expenses against the YTD forecast allocation.
Fuel	0.117	71.7%	Minor variance.	0.175	6.2%	Minor variance.
Insurance	0.188	13.6%	Lower expenses primarily due to timing of expenses for General Liability Insurance (\$0.186M) against the monthly forecast allocation.	1.065	7.4%	Lower expenses primarily due to timing of expenses for General Liability Insurance (\$1.048M) against the YTD forecast allocation.
Maintenance and Other Operating Contracts	3.512	26.3%	Lower expenses primarily for Major Maintenance & Painting (\$2.033M), Sandy-related expenses (\$1.853M), Security & Surveillance Equipment costs (\$0.436M), and other expenses due to timing, offset by higher expense for E-ZPass Tags (-\$0.783M).	18.132	17.2%	Lower expenses primarily for Sandy-related expenses (\$10.364M), Major Maintenance & Painting (\$4.851M), E-ZPass Customer Service Center costs (\$2.108M), Security & Surveillance Equipment costs (\$1.439M), and other expenses due to timing, offset by higher expense for Maintenance of E-ZPass Equipment (-\$0.827M).
Professional Service Contracts	0.466	12.1%	Lower expenses primarily for Engineering Services (\$0.502M), Planning Studies Consultants costs (\$0.201M), Office Equipment Maintenance & Repair Services (\$0.176M), and other expenses due to timing against the monthly forecast allocation, offset by higher expense for Outside Audit Services (-\$0.733M).	6.408	16.4%	Lower expenses primarily for Engineering Services (\$2.751M), Bond Issuance Costs (\$1.144M), Planning Studies Consultants costs (\$0.961M), Other Outside Services (\$0.693M), and Legal Services Expense (\$0.465M) against the YTD forecast allocation, offset by higher expense for Outside Audit Services (-\$0.683M) and Procurement Card Purchases (-\$0.374M).
Materials & Supplies	0.339	82.3%	Lower expenses across a variety of small equipment and supply categories against the monthly forecast allocation.	1.313	31.5%	Lower expenses across a variety of small equipment and supply categories against the YTD forecast allocation.
Other Business Expense	0.458	19.9%	Lower expenses primarily for Credit Card Fees (\$0.400M).	0.392	1.6%	Lower expenses primarily for Credit Card Fees (\$0.237M).
Depreciation	0.285	3.3%	Minor variance.	1.427	1.5%	Minor variance.
Other Post Employment Benefits	0.000	-	No variance.	0.000	-	No variance.
Reimbursable						
Capital and Other Reimbursements	(0.641)	-34.6%	Lower capital reimbursements against the monthly forecast allocation.	(2.018)	-10.4%	Lower capital reimbursements against the YTD forecast allocation.
Payroll	0.453	47.6%	Lower than planned reimbursable expenses against the monthly forecast allocation.	1.821	20.7%	Lower than planned reimbursable expenses against the YTD forecast allocation.
Overtime	0.052	100.0%	See overtime tables	0.214	60.3%	See overtime tables
Health and Welfare	0.072	36.3%	Lower than planned reimbursable expenses against the monthly forecast allocation.	0.221	11.2%	Lower than planned reimbursable expenses against the YTD forecast allocation.
OPEB Current Payment	0.000	-	No variance.	0.000	-	No variance.
Pensions	0.174	62.2%	Lower than planned reimbursable expenses against the monthly forecast allocation.	0.802	35.0%	Lower than planned reimbursable expenses against the YTD forecast allocation.
Other Fringe Benefits	0.063	50.9%	Lower than planned reimbursable expenses against the monthly forecast allocation.	0.270	24.1%	Lower than planned reimbursable expenses against the YTD forecast allocation.
Reimbursable Overhead	(0.173)	-70.1%	Higher than planned reimbursable expenses against the monthly forecast allocation.	(1.310)	-27.0%	Higher than planned reimbursable expenses against the YTD forecast allocation.

**MTA Bridges and Tunnels**  
**July Financial Plan - 2014 Mid-Year Forecast**  
**Non-Reimbursable/Reimbursable Overtime**  
(\$ in millions)

	November						November Year-to-Date					
	Mid-Year Forecast		Actuals		Var. - Fav./(Unfav)		Mid-Year Forecast		Actuals		Var. - Fav./(Unfav)	
	Hours	\$	Hours	\$	Hours	\$	Hours	\$	Hours	\$	Hours	\$
<b>NON-REIMBURSABLE OVERTIME</b>												
<b>OPERATIONS &amp; MAINTENANCE</b>												
<u>Scheduled Service</u>	5,785	\$0.317	5,677	\$0.311	108	\$0.006	45,229	\$2.461	42,889	\$2.334	2,341	\$0.127
					1.9%	1.8%					5.2%	5.2%
<u>Unscheduled Service</u>	1,838	\$0.092	1,753	\$0.088	85	\$0.004	10,727	\$0.572	9,898	\$0.528	829	\$0.044
					4.6%	4.7%					7.7%	7.6%
<u>Programmatic/Routine Maintenance</u>	54	\$0.004	19	\$0.002	35	\$0.002	400	\$0.029	382	\$0.028	18	\$0.001
					64.7%	53.7%					4.4%	4.3%
<u>Unscheduled Maintenance</u>	2,100	\$0.169	2,939	\$0.236	(839)	(\$0.067)	19,385	\$1.461	22,923	\$1.728	(3,538)	(\$0.267)
					-40.0%	-40.0%					-18.2%	-18.3%
<u>Vacancy/Absentee Coverage</u>	13,062	\$0.718	12,681	\$0.697	381	\$0.021	138,817	\$8.024	135,145	\$7.812	3,672	\$0.212
					2.9%	2.9%					2.6%	2.6%
<u>Weather Emergencies</u>	600	\$0.044	762	\$0.055	(161)	(\$0.011)	16,892	\$1.169	16,636	\$1.152	256	\$0.017
					-26.8%	-26.1%					1.5%	1.5%
<u>Safety/Security/Law Enforcement</u>	2,818	\$0.148	3,285	\$0.173	(467)	(\$0.025)	25,919	\$1.435	23,106	\$1.279	2,813	\$0.156
					-16.6%	-16.9%					10.9%	10.9%
<u>Other</u>	911	\$0.111	918	\$0.111	(6)	(\$0.000)	8,217	\$0.790	9,340	\$0.898	(1,123)	(\$0.108)
					-0.7%	-0.3%					-13.7%	-13.7%
<u>*All Other Departments and Accruals</u>		\$0.244		(\$0.107)		\$0.351		\$4.157		\$2.899		\$1.258
						**						30.3%
Subtotal	27,167	\$1.846	28,033	\$1.566	(865)	\$0.280	265,585	\$20.099	260,318	\$18.658	5,267	\$1.441
					-3.2%	15.2%					2.0%	7.2%
<b>REIMBURSABLE OVERTIME</b>	704	\$0.052	0	\$0.000	704	\$0.052	4,976	\$0.355	1,456	\$0.141	3,520	\$0.214
					100.0%	100.0%					70.7%	60.4%
<b>TOTAL OVERTIME</b>	<b>27,871</b>	<b>\$1.898</b>	<b>28,033</b>	<b>\$1.566</b>	<b>(161)</b>	<b>\$0.332</b>	<b>270,561</b>	<b>\$20.454</b>	<b>261,774</b>	<b>\$18.799</b>	<b>8,787</b>	<b>\$1.655</b>
					-0.6%	17.5%					3.2%	8.1%

Figures are preliminary.

Totals may not add due to rounding

NOTE: Percentages are based on each type of Overtime and not on Total Overtime.

\*Includes overtime for all departments other than Operations and Maintenance, and adjustments to reflect the 28-day payroll lag.

**MTA Bridges and Tunnels**  
**July Financial Plan - 2014 Mid-Year Forecast**  
**Non-Reimbursable/Reimbursable Overtime**  
(\$ in millions)

		Monthly			Year-to-Date		
		Var. - Fav./(Unfav)			Var. - Fav./(Unfav)		
		Hours	\$	Explanations	Hours	\$	Explanations
<b>NON-REIMBURSABLE OVERTIME</b>							
<b>OPERATIONS &amp; MAINTENANCE</b>							
<u>Scheduled Service</u>		108	\$0.006	Minor variance	2,341	\$0.127	Lower than planned expenses
		1.9%	1.8%		5.2%	5.2%	
<u>Unscheduled Service</u>		85	\$0.004	Minor variance	829	\$0.044	Lower than planned expenses
		4.6%	4.7%		7.7%	7.6%	
<u>Programmatic/Routine Maintenance</u>		35	\$0.002	Minor variance	18	\$0.001	Minor variance
		64.7%	53.7%		4.4%	4.3%	
<u>Unscheduled Maintenance</u>		(839)	(\$0.067)	Higher than planned expenses	(3,538)	(\$0.267)	Higher than planned expenses
		-40.0%	-40.0%		-18.2%	-18.3%	
<u>Vacancy/Absentee Coverage</u>		381	\$0.021	Minor variance	3,672	\$0.212	Lower than planned expenses
		2.9%	2.9%		2.6%	2.6%	
<u>Weather Emergencies</u>		(161)	(\$0.011)	Minor variance	256	\$0.017	Lower than planned expenses
		-26.8%	-26.1%		1.5%	1.5%	
<u>Safety/Security/Law Enforcement</u>		(467)	(\$0.025)	Minor variance	2,813	\$0.156	Lower than planned expenses
		-16.6%	-16.9%		10.9%	10.9%	
<u>Other</u>		(6)	(\$0.000)	Minor variance	(1,123)	(\$0.108)	Higher than planned expenses
		-0.7%	-0.3%		-13.7%	-13.7%	
<u>*All Other Departments and Accruals</u>			\$0.351	Primarily due to adjustments for the 28-day OT payroll lag		\$1.258	Primarily due to adjustments for the 28-day OT payroll lag
			**			30.3%	
<b>Subtotal</b>		(865)	\$0.280		5,267	\$1.441	
		-3.2%	15.2%		2.0%	7.2%	
<b>REIMBURSABLE OVERTIME</b>							
		704	\$0.052	Lower than planned overtime due to the timing of capital project hours billed to the capital program	3,520	\$0.214	Lower than planned overtime due to the timing of capital project hours billed to the capital program
		100.0%	100.0%		70.7%	60.4%	
<b>TOTAL OVERTIME</b>		<b>(161)</b>	<b>\$0.332</b>		<b>8,787</b>	<b>\$1.654</b>	

Figures are preliminary.

Totals may not add due to rounding

NOTE: Percentages are based on each type of Overtime and not on Total Overtime.

\*Includes overtime for all departments other than Operations and Maintenance, and adjustments to reflect the 28-day payroll lag.

\*\*Variance exceeds 100%



**METROPOLITAN TRANSPORTATION AUTHORITY**  
**2014 Overtime Reporting**  
**Overtime Legend**

**OVERTIME DECOMPOSITION LEGEND DEFINITIONS**

<b><u>Type</u></b>	<b><u>Definition</u></b>
<i>Scheduled Service</i>	Crew book/Regular Run/Shift hours (above 8 hours) required by train crews, bus/tower/block operators, transportation supervisors/dispatchers, fare sales and collection, Train & Engineers, as well as non-transportation workers whose work is directly related to providing service (includes coverage for holidays).
<i>Unscheduled Service</i>	Service coverage resulting from extraordinary events not related to weather, such as injuries, mechanical breakdowns, unusual traffic, tour length, late tour relief, and other requirements that arise that are non-absence related.
<i>Programmatic/Routine Maintenance</i>	<i>Program Maintenance</i> work for which overtime is planned (e.g. Railroad Tie Replacement, Sperry Rail Testing, Running Board Replacement Programs). This also includes <i>Routine Maintenance</i> work for which OT has been planned, as well as all other maintenance <u>not resulting from extraordinary events</u> , including running repairs. Program/Routine maintenance work is usually performed during hours that are deemed more practical in order to minimize service disruptions, and includes contractual scheduled pay over 8 hours.
<i>Unscheduled Maintenance</i>	Resulting from an <u>extraordinary event</u> (not weather-related) requiring the use of unplanned maintenance to perform repairs on trains, buses, subway and bus stations, depots, tracks and administrative and other facilities, including derailments, tour length and weekend coverage.
<i>Vacancy/Absentee Coverage</i>	Provides coverage for an absent employee or a vacant position.
<i>Weather Emergencies</i>	Coverage necessitated by extreme weather conditions (e.g. snow, flooding, hurricane, and tornadoes), as well as preparatory and residual costs.
<i>Safety/Security/Law Enforcement</i>	Coverage required to provide additional customer & employee protection and to secure MTA fleet facilities, transportation routes, and security training.
<i>Other</i>	Includes overtime coverage for clerical, administrative positions that are eligible for overtime.
<i>Reimbursable Overtime</i>	Overtime incurred to support projects that are reimbursed from the MTA Capital Program and other funding sources.

**MTA BRIDGES AND TUNNELS  
TRAFFIC VOLUME AND REVENUE  
(millions)**

**Month of November**

**Year to date ending November 2014**

**Comparison Current Year vs. Prior Year:**

Prior Year		Current Year		Percentage Change			Prior Year*		Current Year		Percentage Change	
Traffic	Revenue	Traffic	Revenue	Traffic	Revenue		Traffic	Revenue	Traffic	Revenue	Traffic	Revenue
3.1	\$21.0	3.1	\$21.1	0.7%	0.8%	Bronx-Whitestone	36.4	\$242.7	35.2	\$238.7	-3.2%	-1.6%
0.6	1.2	0.6	1.2	1.5%	0.5%	Cross Bay	7.1	15.6	6.9	15.0	-2.7%	-4.0%
1.9	5.5	1.8	5.4	-1.2%	-2.1%	Henry Hudson	20.0	57.2	20.4	59.4	1.6%	3.8%
1.4	8.4	1.4	8.4	0.0%	-0.4%	Hugh L. Carey*	15.2	87.5	15.4	90.4	1.7%	3.3%
0.6	1.2	0.6	1.1	-3.6%	-4.5%	Marine Parkway	7.2	15.5	6.8	14.4	-6.0%	-7.0%
2.3	14.3	2.4	14.5	0.9%	0.8%	Queens Midtown	25.5	154.5	26.6	163.8	4.2%	6.0%
2.3	16.3	2.3	16.6	1.6%	1.6%	RFK - Bronx	25.3	177.1	26.4	187.4	4.1%	5.8%
2.5	15.2	2.6	15.4	2.5%	1.7%	RFK - Manhattan	28.1	168.4	28.5	173.3	1.3%	2.9%
3.3	24.0	3.4	24.7	2.6%	2.9%	Throgs Neck	36.8	267.7	37.4	276.7	1.7%	3.4%
5.2	28.5	5.2	27.8	-0.6%	-2.5%	Verrazano-Narrows	59.7	323.2	58.5	317.9	-2.0%	-1.6%
<b>23.2</b>	<b>\$135.7</b>	<b>23.4</b>	<b>\$136.3</b>	<b>0.7%</b>	<b>0.4%</b>	<b>Total</b>	<b>261.5</b>	<b>\$1,509.3</b>	<b>262.2</b>	<b>\$1,537.0</b>	<b>0.3%</b>	<b>1.8%</b>
	<b>\$5.849</b>		<b>\$5.834</b>		<b>-0.3%</b>	<b>Revenue Per Vehicle</b>		<b>\$5.772</b>		<b>\$5.862</b>		<b>1.6%</b>

\*Toll increase implemented March 3, 2013

Note: Numbers may not add due to rounding.

**Comparison Actual vs. Mid-Year Forecast:**

Mid-Year Forecast		Nov Actual		Percentage Change			Mid-Year Forecast		YTD Actual		Percentage Change	
Traffic	Revenue	Traffic	Revenue	Traffic	Revenue		Traffic	Revenue	Traffic	Revenue	Traffic	Revenue
<b>23.3</b>	<b>136.5</b>	<b>23.4</b>	<b>136.3</b>	<b>0.3%</b>	<b>-0.1%</b>	<b>Total All</b>	<b>258.7</b>	<b>\$1,515.7</b>	<b>262.2</b>	<b>\$1,537.0</b>	<b>1.3%</b>	<b>1.4%</b>
	<b>\$5.858</b>		<b>\$5.834</b>		<b>-0.4%</b>	<b>Revenue Per Vehicle</b>		<b>\$5.858</b>		<b>\$5.862</b>		<b>0.1%</b>

**MTA BRIDGES AND TUNNELS**  
**JULY FINANCIAL PLAN - 2014 MID-YEAR FORECAST**  
**TOTAL POSITIONS BY FUNCTION AND DEPARTMENT**  
**NON-REIMBURSABLE/REIMBURSABLE and FULL-TIME POSITIONS/FULL-TIME EQUIVALENTS**  
**November 2014**

Department	Mid-Year Forecast	Actual	Favorable (Unfavorable) Variance	Explanation of Variances
<b>Administration</b>				
Executive	2	2	-	
Law <sup>(1)</sup>	23	20	3	3 Professional vacancies
CFO <sup>(2)</sup>	29	26	3	1 Managerial and 2 Professional vacancies
Labor Relations	5	4	1	1 Professional vacancy
Staff Services <sup>(3)</sup>	32	29	3	1 Managerial and 2 Professional vacancies
EEO	1	1	-	
<b>Total Administration</b>	<b>92</b>	<b>82</b>	<b>10</b>	
<b>Operations</b>				
Revenue Management	41	36	5	5 Professional vacancies
Operations (Non-Security)	726	559	167	131 BTO and 36 Managerial vacancies
<b>Total Operations</b>	<b>767</b>	<b>595</b>	<b>172</b>	
<b>Maintenance</b>				
Maintenance	170	167	3	3 Managerial vacancies
Operations - Maintainers	173	164	9	9 Maintainer vacancies
Technology	54	48	6	1 Professional and 5 Managerial vacancies
Internal Security - Tech Svcs	8	10	(2)	2 Maintainer overages
<b>Total Maintenance</b>	<b>405</b>	<b>389</b>	<b>16</b>	
<b>Engineering/Capital</b>				
Engineering & Construction	169	158	11	11 Professional vacancies
Law <sup>(1)</sup>	16	14	2	2 Professional vacancies
Health & Safety	10	9	1	1 Professional vacancy
CFO-Planning & Budget Capital	23	16	7	3 Managerial and 4 Professional vacancies
<b>Total Engineering/Capital</b>	<b>218</b>	<b>197</b>	<b>21</b>	
<b>Public Safety</b>				
Operations (Security)	232	232	-	
Internal Security - Operations	40	37	3	4 Managerial vacancies and 1 Professional overage
<b>Total Public Safety</b>	<b>272</b>	<b>269</b>	<b>3</b>	
<b>Total Positions</b>	<b>1,754</b>	<b>1,532</b>	<b>222</b>	
Non-Reimbursable	<b>1,666</b>	<b>1,444</b>	<b>222</b>	
Reimbursable	88	88	-	
<b>Total Full-Time</b>	<b>1,754</b>	<b>1,532</b>	<b>222</b>	

(1) Includes Legal and Procurement staff.

(2) Includes Controller and Operating Budget staff.

(3) Includes Human Resources and Administration staff.

**MTA BRIDGES AND TUNNELS**  
**JULY FINANCIAL PLAN - 2014 MID-YEAR FORECAST**  
**TOTAL POSITIONS BY FUNCTION AND OCCUPATION**  
**FULL-TIME POSITIONS and FULL-TIME EQUIVALENTS**  
November 2014

	Mid-Year Forecast	Actual	Favorable (Unfavorable) Variance	Explanation of Variances
<b>Administration</b>				
Managers/Supervisors	27	25	2	1 vacancy in CFO and 1 in Staff Services
Professional, Technical, Clerical	65	57	8	3 vacancies in Law, 2 in CFO, 2 in Staff Services, and 1 vacancy in Labor Relations
Operational Hourlies	-	-	-	
<b>Total Administration</b>	<b>92</b>	<b>82</b>	<b>10</b>	
<b>Operations</b>				
Managers/Supervisors	200	164	36	36 Managerial vacancies in Operations
Professional, Technical, Clerical	38	33	5	5 Professional vacancies in Revenue Management
Operational Hourlies <sup>(1)</sup>	529	398	131	131 BTO vacancies in Operations
<b>Total Operations</b>	<b>767</b>	<b>595</b>	<b>172</b>	
<b>Maintenance</b>				
Managers/Supervisors	35	27	8	5 vacancies in Technology and 3 in Maintenance
Professional, Technical, Clerical	49	48	1	1 vacancy in Technology
Operational Hourlies <sup>(2)</sup>	321	314	7	9 Maintainer vacancies in Operations and 2 overages in Internal Security
<b>Total Maintenance</b>	<b>405</b>	<b>389</b>	<b>16</b>	
<b>Engineering/Capital</b>				
Managers/Supervisors	46	43	3	3 vacancies in CFO
Professional, Technical, Clerical	172	154	18	11 vacancies in Engineering, 2 in Law, 1 in Health and Safety, and 4 in Planning and Budget
Operational Hourlies	-	-	-	
<b>Total Engineering/Capital</b>	<b>218</b>	<b>197</b>	<b>21</b>	
<b>Public Safety</b>				
Managers/Supervisors	46	42	4	4 vacancies in Internal Security
Professional, Technical, Clerical	28	29	(1)	1 overage in Internal Security
Operational Hourlies <sup>(3)</sup>	198	198	-	
<b>Total Public Safety</b>	<b>272</b>	<b>269</b>	<b>3</b>	
<b>Total Positions</b>				
Managers/Supervisors	354	301	53	
Professional, Technical, Clerical	352	321	31	
Operational Hourlies	1,048	910	138	
<b>Total Positions</b>	<b>1,754</b>	<b>1,532</b>	<b>222</b>	

(1) Represents Bridge and Tunnel Officers. These positions are paid annually, not hourly.

(2) Represents Maintenance personnel. These positions are paid annually, not hourly.

(3) Represents Bridge and Tunnel Officers performing public safety. These positions are paid annually, not hourly.

**MTA BRIDGES AND TUNNELS**  
**MID-YEAR FORECAST AND NOVEMBER FORECAST vs. ACTUAL RESULTS (NON-REIMBURSABLE)**  
**NOVEMBER 2014 YEAR-TO-DATE**  
**(\$ in millions)**

	November Year-to-Date			Favorable(Unfavorable) Variance			
	Mid-Year Forecast	November Forecast	Actual	Mid-Year Forecast		November Forecast	
	\$	\$	\$	\$	%	\$	%
Total Revenue	1,533.954	1,552.854	1,559.518	25.564	1.7	6.664	0.4
Investment Income	0.145	0.140	0.121	(0.024)	(16.5)	(0.019)	(13.3)
Total Revenue without Investment Income	<b>1,533.809</b>	<b>1,552.715</b>	<b>1,559.397</b>	<b>25.588</b>	<b>1.7</b>	<b>6.682</b>	<b>0.4</b>
Total Expenses before Non-Cash Liability Adjs	<b>409.751</b>	<b>394.333</b>	<b>374.473</b>	<b>35.278</b>	<b>8.6</b>	<b>19.860</b>	<b>5.0</b>
Depreciation	95.669	95.669	94.242	1.427	1.5	1.427	1.5
Other Post-Employment Benefits	60.969	60.969	60.969	0.000	0.0	0.000	0.0
Environmental Remediation	0.000	0.000	0.000	0.000		0.000	
Total Expenses after Non-Cash Liability Adjs	<b>566.389</b>	<b>550.971</b>	<b>529.684</b>	<b>36.705</b>	<b>6.5</b>	<b>21.287</b>	<b>3.9</b>
Less: Depreciation	95.669	95.669	94.242	1.427	1.5	1.427	1.5
Less: Other Post-Employment Benefits	60.969	60.969	60.969	0.000	0.0	0.000	0.0
<b>Total Expenses</b>	<b>409.751</b>	<b>394.333</b>	<b>374.473</b>	<b>35.278</b>	<b>8.6</b>	<b>19.860</b>	<b>5.0</b>
<b>Net Income/(Deficit)</b>	<b>1,124.203</b>	<b>1,158.521</b>	<b>1,185.045</b>	<b>60.842</b>	<b>5.4</b>	<b>26.524</b>	<b>2.3</b>
<b>Net Income without Investment Income</b>	<b>1,124.058</b>	<b>1,158.382</b>	<b>1,184.924</b>	<b>60.866</b>	<b>5.4</b>	<b>26.542</b>	<b>2.3</b>

Note: Totals may not add due to rounding

The November Forecast now includes safety and service investment revenues and expenses, captured currently below the line at the MTA level, for consistent comparisons with actual results.

**MTA BRIDGES AND TUNNELS**  
**EXPLANATION OF VARIANCES BETWEEN NOVEMBER FORECAST AND ACTUAL RESULTS**  
**NON-REIMBURSABLE**  
**NOVEMBER 2014 YEAR-TO-DATE**  
**(\$ in millions)**

	<b>Favorable/(Unfavorable)</b>		<b>Variance Explanation</b>
	<u>Variance</u>	<u>Percent</u>	
Total Revenue	\$6.664	0.4	Primarily due to increased toll revenue from higher traffic volumes stemming from improved economic conditions
Total Expenses	\$19.860	5.0	Primarily due to vacancies, lower overtime, and the timing of Sandy-related restoration and major maintenance projects

NOTE: Mid-Year Forecast vs. Actual Variance explanations are provided in the monthly report to the Finance Committee

The November Forecast now includes safety and service investment revenues and expenses, captured currently below the line at the MTA level, for consistent comparisons with actual results.



# **Bridges and Tunnels**

---

---

## **Capital Program Project Status Report December 2014**

---

---

MTA BRIDGES & TUNNELS  
CAPITAL PROGRAM  
STATUS REPORT  
DECEMBER 31, 2014

Introduction

This report presents the year's planned versus actual and forecast commitments, completions, and close-outs in narrative, tabular and graphic formats.

2014 Overview

In 2014, Bridges & Tunnels made 171 commitments against a plan calling for 150 commitments with a total value of \$976.8 million. While Bridges & Tunnels exceeded its goal for the number of commitments made in 2014, the total value of those awards was \$808.1 million against a plan value of \$976.8 million (82.7% of the plan). (See Attachment 1, 2014 Commitment Chart). Favorable market conditions were the primary reason why actual commitments were \$168.7 million less than planned (see table below). Particularly noteworthy, favorable award variances were realized with the following construction awards (See Attachment 2 – 2014 Major Commitments and Attachment 7 – 2014 Commitment Plan):

- **BBT**, Construction contract awarded for \$287.4 million against a plan of \$380.6 million
- **RK23**, Miscellaneous Rehabilitation – Manhattan Approach Ramps Construction for \$68.6 million against a plan of \$98.5 million

<b>MTA BRIDGES AND TUNNELS</b>	
<b>2014 MILESTONE PERFORMANCE - COMMITMENTS</b>	
Actual 2014 Commitments of \$808.1M were less than Plan by \$168.7M (\$ in Millions)	
<b>2014 Planned Commitments</b>	<b>\$976.8</b>
Commitments not made – Deferred	(\$26.5)
Decrease in Commitments – Low Bids	(\$185.3)
Increase in Commitments – High Bids	\$47.5
Increase in Commitments – Increased Scope/Projects Added	\$19.0
Decrease in Commitments – Decreased Scope	(\$23.4)
<b>Actual Commitments Less Than Plan</b>	<b>(\$168.7)</b>
<b>2014 Actual Commitments</b>	<b>\$808.1</b>

In 2014, Bridges and Tunnels realized 8 project completions with a value of \$287.5 million against a plan calling for 5 project completions with a value of \$156.0 million. Actual project completions represent 84% above the 2014 plan. Major projects completed this year include:

- BB45, Replace Electrical Switchgear and Equipment for \$56.7 million
- RK73, Deck Replacement – RKF MQ Ramp for \$63.6 million
- TN82, Rehabilitate Orthotropic Deck and Paint Approach Spans for \$67.6 million
- VN03, Toll Plaza Eastbound and Westbound Ramp Improvements for \$63.9 million

Bridges and Tunnels accomplished \$267.1 million in task level closeouts in 2014 (55 tasks).



## December 2014

### Commitments

In the month of December, there were 32 commitments made with a total value of \$619.4 million. The most notable commitments made in December are:

- **BBT**, Construction totaling \$287.4 million for:
  - BB54, Replacement Brooklyn Plaza Structural Slab, \$12.7M
  - BB28, Rehabilitation of Walls, Roadway, Firelines, Ceiling Repair, \$48.7M
  - BB28S, Sandy Restoration Projects, \$226.0M:
    - ED010228, Restore Hugh L. Carey Tunnel – Structural, \$86.5M
    - ED020202, Restore Hugh L. Carey Tunnel Roadway, \$5.4M
    - ED040243, Restore Hugh L. Carey Tunnel Utilities, \$117.8M
    - ED050243, Hugh L. Carey Tunnel Environmental Cleanup, \$14.1M
    - ED040243, Restore Hugh L. Carey Tunnel Utilities, Pumps Conversion, \$2.3M
- RK65, Deck Replacement Bronx/Manhattan Ramps & Toll Plaza, Construction and Painting for \$217.9M
- RK23, Miscellaneous Rehabilitation, Manhattan Approach Ramps, Construction for \$68.6M
- HH88, Replace Upper and Lower Level Plaza and Southbound Approach, Construction for \$19.2M

### Completions

There were two unplanned project completions in December:

- TN82 Rehabilitate Orthotropic Deck for \$25.8 million
- TN82 Paint Bronx and Queens Approach Spans for \$42.2 million

(See Attachment 3 - 2013 Completion Chart; Attachment 4 – 2013 Major Project Completions; Attachment 5 - 2013 Project Completion Plan).

### Close-outs

There were eight task level closeouts in December for \$201.7 million. Year-to-date, there has been 55 task level closeouts with a total value of \$267.1 million. (See Attachment 6 – 2014 Task Level Closeouts).

### Award Date Changes for Significant Remaining Commitments

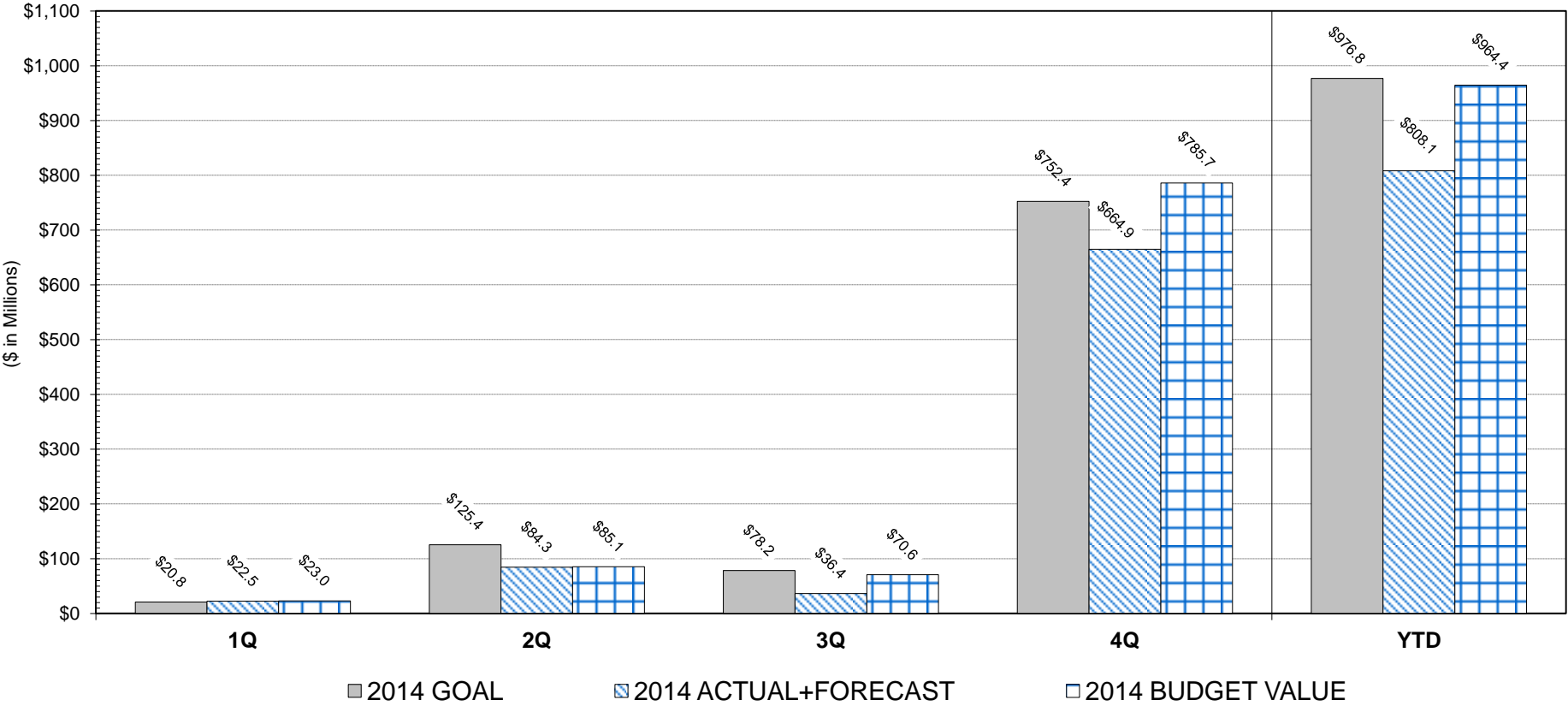
There are no significant commitment date changes.

### Completion Date Changes for Remaining Projects

All planned completions for 2014 have been made (See Attachment 5 - 2014 Completion Plan).

MTA Bridges and Tunnels  
Commitments as of December 31, 2014

2014 Budget Goal:	\$976.8	
2014 Annual Forecast	\$808.1	
YTD Goal:	\$976.8	
YTD Actual:	\$808.1	(82.7% of YTD Goal)
YTD Budgeted Value:	\$964.4	(98.7% of YTD Goal)
Left to Commit:	\$0.0	



## MTA Bridges and Tunnels: Status of Major Commitments as of December 31, 2014

Project		Budget (\$ in Millions)			Award Date				Notes
		2014 Goal	Actual / Forecast*	Budgeted Value	2014 Goal	Advertisement Date	Actual / Forecast		
D604VN87	Substation #1 Rehabilitation - Design/Build	\$12.1	\$12.0	\$12.1	Mar-14	Oct-13	Feb-14	A	
ED010228	Restore Hugh L. Carey Tunnel - Structural - Construction Administration	\$11.7	\$8.5	\$11.7	May-14	Nov-13	May-14	A	
D602RK65	Deck Replacement - Bronx Toll Plaza - Training Facility, Design/Build	\$11.8	\$13.1	\$11.8	Jun-14	Dec-13	Jun-14	A	
D602RK65	Deck Replacement - Bronx Toll Plaza - RK65A -Construction	\$190.0	\$203.6	\$190.0	Oct-14	Jun-14	Dec-14	A	2
D607RK65	Paint - Plaza and Approach Ramps - Construction	\$16.5	\$14.3	\$16.5	Oct-14	Jun-14	Dec-14	A	2
D601BB28	Rehab. Walls, Roadway, Firelines, Ceiling Repair - Construction	\$61.0	\$48.7	\$61.0	Nov-14	Jun-14	Dec-14	A	3
D602BB54	Replacement Brooklyn Plaza Structural Slab - Construction	\$23.7	\$12.7	\$23.7	Nov-14	Jun-14	Dec-14	A	3
ED010228	Restore Hugh L. Carey Tunnel - Structural - Construction	\$167.1	\$86.5	\$167.1	Nov-14	Jun-14	Dec-14	A	3
ED040243	Restore Hugh L. Carey Tunnel Utilities - Construction	\$110.8	\$117.8	\$110.8	Nov-14	Jun-14	Dec-14	A	3
D601RK23	Miscellaneous Rehab - Manhattan Approach Ramps - Construction	\$98.5	\$68.6	\$98.5	Dec-14	Jul-14	Dec-14	A	
D601RK76	Miscellaneous Structural Repair - Construction	\$12.0	\$2.6	\$12.0	Dec-14	Aug-14	Dec-14	A	
D602HH88	Replace Upper & Lower Level Plza & Southbnd. Appr. - Construction	\$23.5	\$19.2	\$23.5	Dec-14	Jul-14	Dec-14	A	

\* Forecast is equal to the most current approved engineer's estimate at award for a project that is scheduled to be committed.

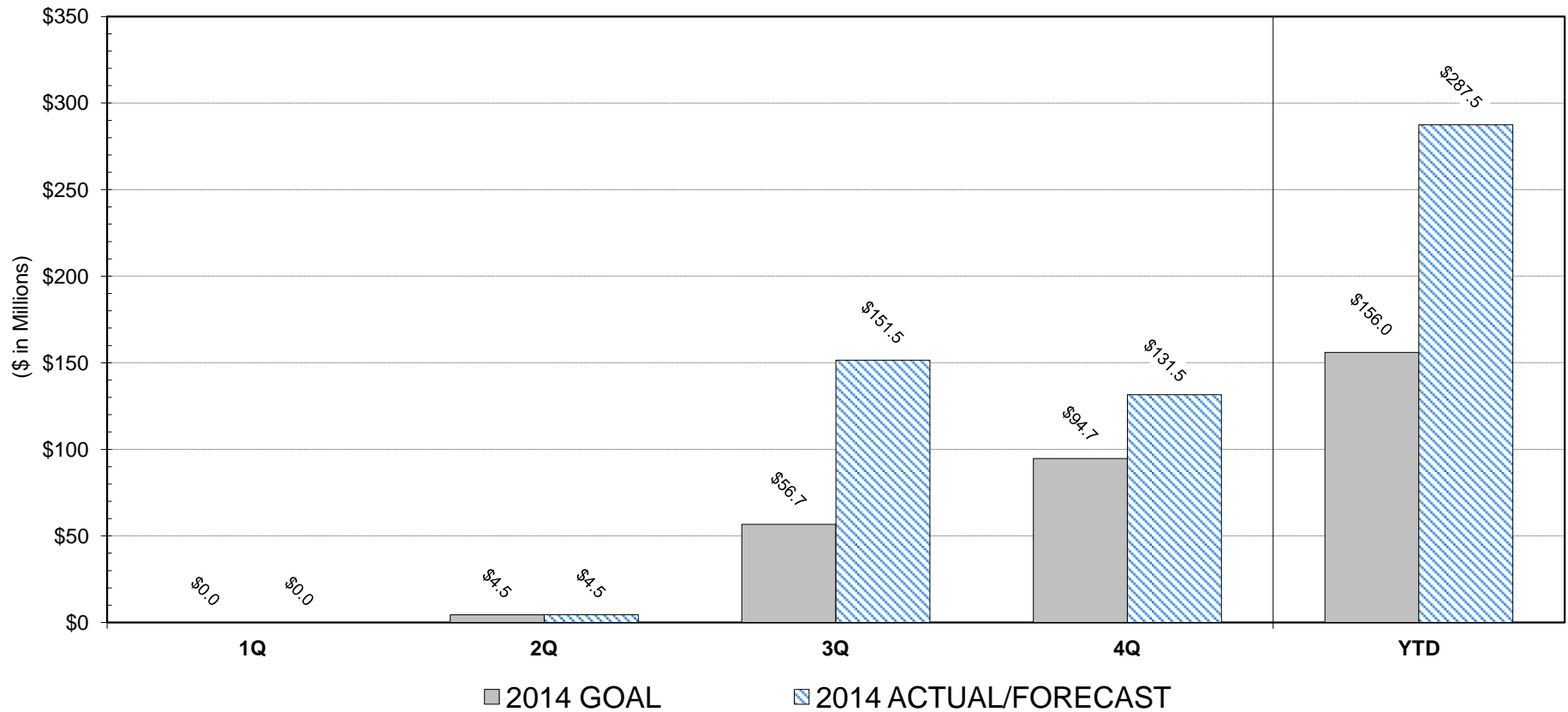
1 Advertised for Pre-Qualification of Contractors in March 2014.

2 Additional Time Required to Answer Bidder's Questions

3 Contractor has been selected. Additional time required to process award documents.

## MTA Bridges and Tunnels Completions as of December 31, 2014

2014 Budget Goal:	\$156.0	
2014 Annual Forecast:	\$287.5	
YTD Goal:	\$156.0	
YTD Actual:	\$287.5	(184.3% of YTD Goal)
Left to Complete:	\$0.0	



## MTA Bridges and Tunnels: Status of Major Completions as of December 31, 2014

Project	Budget (\$ in Millions)		Completions Status		Completion Date			Notes
	2014 Goal	Actual / Forecast*	Physical % Complete	% Contingency Spent	2014 Goal	Actual / Forecast		
D604BB45   Replace Electrical Switchgear & Equipment	\$56.7	\$56.7	100%	41%	Sep-14	Sep-14	A	
D601BW97   Concrete Anchorage Repairs	\$8.0	\$8.0	99%	11%	Oct-14	Aug-14	A	
D602RK73   Deck Replacement - RFK MQ Ramp	\$63.6	\$63.6	96%	22%	Nov-14	Aug-14	A	
D602RK65   Deck Replacement - Bronx Manhattan Ramps/ Toll Plaza - Maintenance Facility Design Build	\$23.1	\$23.1	96%	0%	Nov-14	Aug-14	A	
D602VN03   Toll Plaza East & Westbound Ramp Improvements	\$0.0	\$63.9	96%	20%	2015	Nov-14	A	1
D602TN82   Rehabilitate Orthotropic Deck	\$0.0	\$25.4	95%	0%	2015	Dec-14	A	2
D607TN82   Paint Bronx and Queens Approach Span	\$0.0	\$42.2	95%	0%	2015	Dec-14	A	2

\* Forecast is equal to the project's most recently validated estimate at completion (EAC).

1 Completed nine months ahead of schedule

2 Completed ahead of schedule

**MTA BRIDGES & TUNNELS  
CAPITAL PROGRAM  
2014 PROJECT COMPLETIONS**

Project ID (ACEP)	Project Description	Type	Goal End Date	Goal Value	Budgeted Value	Actual End Date	Actual Value	Forecast End Date	Forecast Value
D405BB43	Rehab Battery Parking Garage (Phase IV)	Construction	Apr-14	\$4,506,839	\$4,506,839	Apr-14	\$4,506,839		
			<b>Apr-14 Total</b>	\$4,506,839	\$4,506,839				
D604BB45	Replace Electrical Switchgear & Equipment	Construction	Sep-14	\$56,736,824	\$56,736,824	Sep-14	\$56,736,824		
			<b>Sep-14 Total</b>	\$56,736,824	\$56,736,824				
D601BW97	Concrete Anchorage Repairs	Construction - (Bronx Anchorage)	Oct-14	\$8,036,222	\$8,036,222	Aug-14	\$8,036,222		
			<b>Oct-14 Total</b>	\$8,036,222	\$8,036,222				
D602RK73	Deck Replacement - RFK MQ Ramp	Design/Build Construction	Nov-14	\$63,589,165	\$63,589,165	Aug-14	\$63,589,165		
D602RK65	Deck Replacement - Bronx Manhattan Ramps/ Toll Plaza - Maintenance Facility Design Build	Design/Build Construction	Nov-14	\$23,103,084	\$23,103,084	Aug-14	\$23,103,084		
			<b>Nov-14 Total</b>	\$86,692,249	\$86,692,249				
			<b>Grand Total</b>	<b>\$155,972,134</b>	<b>\$155,972,134</b>	<b>Total</b>	<b>\$155,972,134</b>		
<b><u>Unplanned Completions</u></b>									
D602VN03	Toll Plaza East & Westbound Ramp Improvements	Construction				Nov-14	\$63,890,560		
D602TN82	Rehabilitate Orthotropic Deck	Construction				Dec-14	\$25,368,440		
D607TN82	Paint Bronx and Queens Approach Span	Construction				Dec-14	\$42,238,475		
						<b>Grand Total</b>	<b>\$287,469,609</b>		
								<b>Remaining</b>	<b>\$0</b>

\* Forecast is equal to the project's most recently validated estimate at completion (EAC).

**2014 TASK LEVEL CLOSEOUTS**

PROJECT	PROJECT DESCRIPTION	TASK	TASK DESCRIPTION	CLOSEOUT WAR	CERTIFICATE DATE	CERTIFICATE AMOUNT
D606AW21	Program Administration	D02458	2012 Indirect Prog Adm(TBTA-D1445)	D00001445B	24-Mar-14	\$1,896,912.55
D606AW21	Program Administration	D02460	2013 Indirect Prog Adm(TBTA-D1535)	D00001535A	24-Mar-14	\$2,017,836.97
D502VN80	Rehab Decks on Suspended Spans	D02082	VN80A-PM Constr. F/A(TBTA-D1148)	D00001148A	24-Mar-14	\$505,902.45
D501BW97	Concrete Anchorage Repairs	D02398	PM Construction F/A(TBTA-1210)	D00001210B	25-Mar-14	\$794,634.51
D604QM81	Controls / Communication System	D02909	BC Development F/A(TBTA-D1475)	D00001475A	25-Mar-14	\$4,009.50
D503VN03	New Toll Plaza - Phase 1	D02379	PM Constr F/A Ph A&C(TBTA-D1217)	D00001217C	03-Apr-14	\$642,589.00
D605BB43	Misc. Repairs at BP Garage	D03050	BC Development F/A(TBTA-D1455)	D00001455A	03-Apr-14	\$0.00
D401TN87	Fender Improvements & Scour Backfill	D01583	Const.Adm. (PSC-03-2686)	D00000901B	08-Apr-14	\$1,252,805.12
D503VN03	New Toll Plaza - Phase 1	D02427	Constr-HVAC Reloc- VN03C	D00001302B	30-Apr-14	\$2,277,282.80
D502BW89	Elevated & On Grade (Bx) Appr.	D02328	GASB-Const(BW89)	D00001186B	30-Apr-14	\$429,063.50
D602TN49	Suspended Span Replacement - Phase A	D03018	Cns - Overlay Installation -N/bound	D00001480A	30-Apr-14	\$2,546,114.48
D502HH04	Replace Cross Drainage	D02005	Constr. Adm (PSC05-2749C-#22)	D00001176B	12-May-14	\$227,090.44
D606AW21	Program Administration	D02457	2012 Program Adm.(TBTA-D1444)	D00001444B	30-May-14	\$915,668.22
D606AW21	Program Administration	D02455	2011 Program Adm.(TBTA-D1333)	D00001333A	30-May-14	\$932,778.09
D605BB21	Service Building Rehabilitation	D02552	PM Design F/A(TBTA-D1460)	D00001460B	30-May-14	\$481,444.51
D601TN52	Miscellaneous Structural Rehabilitation	D02912	BC Development F/A(TBTA-D1339)	D00001339A	30-May-14	\$0.00
D501TB23	HRD Ramp	D02941	PM Const F/A(TBTA-D1423)	D00001423B	30-May-14	\$335,187.62
D502VN80	Rehab Decks on Suspended Spans	D01842	PM Design F/A(TBTA-D976)	D00000976D	25-Jun-14	\$2,728,400.32
D603AW48	2nd Generation E-Zpass In-Lane	D02828	AET Proj Mgmt.F/A E&C(TBTA-D1264)	D00001264B	25-Jun-14	\$974,508.17
D502TN50	Replace Concrete Deck	D02059	PM Construction F/A(TBTA-D1036)	D00001036B	10-Jun-14	\$1,407,455.44
D502VN84	Widening of Belt Parkway Ramps	D02085	PM Design F/A(TBTA-D1089)	D00001089C	10-Jun-14	\$873,621.17
G5140109	08PSGP TN ElectSecurity	G03578	Equipment Purchase for HHB	G00002537D	02-Jul-14	\$273,854.13
G5140109	08PSGP TN ElectSecurity	G03577	Equipment Purchase for CBB	G00002536D	02-Jul-14	\$322,557.89
G5140109	08PSGP TN ElectSecurity	G03580	Equipment Purchase for QMT	G00002540B	01-Jul-14	\$168,629.94
G5140109	08PSGP TN ElectSecurity	G03579	Equipment Purchase for MPB	G00002539D	01-Jul-14	\$328,839.98
G5140109	08PSGP TN ElectSecurity	G03576	Equipment Purchase for BBT	G00002526C	01-Jul-14	\$357,001.44
D603AW48	2nd Generation E-Zpass In-Lane	D02826	AET-RAAS Audit Sys.Modif. F/A	D00001305B	12-Aug-14	\$416,866.79
D607VN88	Tower Painting - Below Roadway Level	D02809	Painting - Cns.	D00001290C	05-Aug-14	\$20,263,119.00
D501TN87	Anchorage and Tower Protection	D02073	PM Const F/A(TBTA-D1208)	D00001208C	19-Aug-14	\$794,484.82
D503VN03	New Toll Plaza - Phase 1	D02143	PM Design F/A(TBTA-D1114)	D00001114C	19-Aug-14	\$926,030.69

**2014 TASK LEVEL CLOSEOUTS**

PROJECT	PROJECT DESCRIPTION	TASK	TASK DESCRIPTION	CLOSEOUT WAR	CERTIFICATE DATE	CERTIFICATE AMOUNT
D604BW15	Necklace Lighting	D02585	PM Design F/A(TBTA-D1408)	D00001408A	19-Aug-14	\$336,892.39
D405AW42	Expand/Upgrade Control Center	D01595	Const. Adm. (PSC-05-2780)	D00000793C	26-Aug-14	\$196,626.00
D406AW28	Scope Development	D01643	Dsgn MP20-Bike PathPSC01-2622C	D00000868B	11-Sep-14	\$147,349.16
D604AW80	Advanced Traveler Infomation Systems	D02882	BC Development F/A(TBTA-D1340)	D00001340A	10-Sep-14	\$47,108.90
G5140103	B&T Bronx Whitestone Hardening	G01816	Consultant Constr Mgmt Svces	G00001292A	19-Sep-14	\$2,166,582.95
G5140102	B&T Throgs Neck Hardening	G01671	Consultant Constr Admin	G00001187C	19-Sep-14	\$2,316,771.83
D606AW21	Program Administration	D02453	2010 Prog Adm.(TBTA-D1268)	D00001268B	30-Sep-14	\$1,675,862.71
D601VN34	Verrazano-Narrows Bridge Main Cable Testing	D02915	BC Development F/A(TBTA-D1531)	D00001531A	30-Sep-14	\$49,096.64
D503AW35	Weather Information Systems	D01904	PM Const F/A(TBTA-D1236)	D00001236B	30-Sep-14	\$195,158.95
D402BB28	Rehab Tunnel Walls Rdway & Dra	D02877	FireHarden-Risk-Insp. (PSC-00-2570B	D00001379	15-Oct-14	\$1,255,833.55
D402BB28	Rehab Tunnel Walls Rdway & Dra	D01257	Design (PSC-00-2570)	D00000676	15-Oct-14	\$3,245,154.73
G5140110	B&T 2008 BZPP Grant	G02996	VNB - BZPP Grant Cns.	G00002489	15-Oct-14	\$338,675.00
D602RK65	Deck Replacement - Bronx/Manhattan Ramps/TollPlaza	D02841	RK65R-Demo. Bldg.104(GFM-474B wo87)	D00001324	15-Oct-14	\$2,690,234.88
D502TB64	Replace Deck-RI Viaduct	D02404	TB64C-Steel Repairs @ RFK Bridge#36	D00001219	15-Oct-14	\$25,037.62
D502TB64	Replace Deck-RI Viaduct	D02376	TB64C-Misc. Steel & Concrete Rehab	D00001291	14-Oct-14	\$276,805.00
G4140101	B&T Security Projs:Infra&Facs	G00829	TO #023:I/Q-PE/Final Des-Throgs Nk	G00000524	14-Nov-14	\$2,565,916.57
G4140101	B&T Security Projs:Infra&Facs	G00830	TO #023:I/Q-PE/Final Des-Whitestone	G00000525	14-Nov-14	\$2,790,455.79
D607HH10	Paint - Curb Stringers	D02623	Painting - Cns.	D00001323	01-Dec-14	\$699,577.73
D602HH10	Upper Level Sidewalk / Curb Stringers	D02618	Construction	D00001322	01-Dec-14	\$35,226,238.04
D502BW89	Elevated & On Grade (Bx) Appr.	D02370	GASB-Const.Adm(PSC-07-2814)	D00001199	01-Dec-14	\$31,099.40
D601HH07	Structural Rehabilitation - Phase I	D02614	Constr. Adm.(PSC-11-2892)	D00001451	01-Dec-14	\$877,413.93
D607TN87	Paint - Bronx and Queens Tower Fender Systems	D02758	Painting - Cns.(TN-87B/TNM-338)	D00001281	03-Dec-14	\$5,554,347.53
D501TN87	Anchorage and Tower Protection	D02075	Construction (TN87B/TNM-338)	D00001247	03-Dec-14	\$8,200,584.60
D402BW89	Approach Ramps Repl.& Lower Ga	D01272	Design (Phl)(PSC-03-2672)	D00000870	03-Dec-14	\$12,243,881.88
D402BW82	Susp Span/Deck Replacement	D01265	Construction	D00000899	24-Dec-14	\$138,874,084.15
<b>Total</b>				<b>55</b>	<b>\$267,121,479.47</b>	



MTA BRIDGES & TUNNELS  
CAPITAL PROGRAM  
2014 CAPITAL MILESTONE BACK-UP - PROJECT AWARDS

ACEP	Project Description	Task	Task Description	Goal Start Date	Goal Value	Budget Value	Actual Start Date	Actual Value	Forecast Start Date	Forecast Value
D604MP03	Programmable Logic Controller & Mechanical Rehab.	D03187	Ph 1 - Design/Build RFP (PSC-06-2807D) wo#17	Jan-14	\$139,622	\$139,622	Jan-14	\$139,622		
ED040207	Replace MPB Electrical Equipmt at North Abutment	E02156	Design RFP (PSC-06-2807D)wo#19	Jan-14	\$301,018	\$301,018	Jan-14	\$301,018		
ED050202	Hugh L. Carey Tunnel Environmental Cleanup	E02664	Construction Admin Ph 1	Jan-14	\$61,610	\$61,610	Jan-14	\$61,610		
D606AW15	MTA Independent Engineer	D02446	2014 IEC M+D Opt Yr 3	Jan-14	\$557,693	\$557,693	Jan-14	\$557,693		
<b>Jan-14 Total</b>					<b>\$1,059,943</b>	<b>\$1,059,943</b>				
D605BB21	Service Building Rehabilitation	D02555	Const. Adm(PSC-13-2923E-F wo#1)	Mar-14	\$486,000	\$486,000	Jun-14	\$655,045		
D604QM81	Controls / Communication System	D02684	Design	Mar-14	\$3,051,527	\$3,051,527	Apr-14	\$2,137,691		
D604VN87	Substation #1 Rehabilitation	D02806	Design-Build	Mar-14	\$12,064,170	\$12,064,170	Feb-14	\$12,003,600		
D605BB21	Service Building Rehabilitation	D03246	Design during CNS-CSS (PSC06-2807E#11B)	Mar-14	\$120,000	\$120,000	Mar-14	\$119,751		
D605BB43	Misc. Repairs at BP Garage	D03054	PM Construction F/A(TBTA-D1636)	Mar-14	\$325,000	\$325,000	Mar-14	\$325,000		
D605BB43	Misc. Repairs at BP Garage	D03055	Const. Adm (PSC-13-2923 wo4)	Mar-14	\$526,200	\$526,200	May-14	\$564,133		
D605BB43	Misc. Repairs at BP Garage	D03056	Design During Cns (CSS)	Mar-14	\$88,500	\$88,500				\$0
D601RK76	Miscellaneous Structural Repair	D03079	P.M. Design F/A	Mar-14	\$500,000	\$500,000				\$0
D601RK76	Miscellaneous Structural Repair	D03080	Design	Mar-14	\$500,000	\$500,000				\$0
D601MP06	Substructure and Underwater Scour protection	D03165	SBMP-Const Adm (PSC-13-2924)	Mar-14	\$200,000	\$200,000	Jun-14	\$119,998		
D601MP06	Substructure and Underwater Scour protection	D03166	Const - North Abutment - SBMP - MP06A	Mar-14	\$630,000	\$630,000	Feb-14	\$753,816		
D601MP06	Substructure and Underwater Scour protection	D03167	Const - South Abutment - SBMP - MP06B	Mar-14	\$1,006,635	\$1,006,635	Feb-14	\$594,146		
D602MP21	Rehabilitate Rockaway Point Blvd Overpass	D03186	Design/Build RFP (PSC-11-2896)	Mar-14	\$141,275	\$141,275	Apr-14	\$280,896		
D604MP03	Programmable Logic Controller & Mechanical Rehab.	D03204	Ph1-PM Dsgn/Bld RFP F/A(TBTA-D1618)	Mar-14	\$55,000	\$55,000	Jan-14	\$55,000		
ED040207	Replace MPB Electrical Equipmt at North Abutment	E02155	PM Design/Build RFP F/A (TBTA-E1514)	Mar-14	\$47,500	\$47,500	Jan-14	\$170,000		
<b>Mar-14 Total</b>					<b>\$19,741,807</b>	<b>\$19,741,807</b>				
ED040208	Replace MPB Lighting Systems	E02166	SBMP Construction MP-99S	Apr-14	\$600,000	\$600,000	May-14	\$707,092		
D606AW21	Program Administration	D02461	2014 Program Adm.	Apr-14	\$1,300,000	\$1,300,000	Mar-14	\$1,300,000		
D606AW21	Program Administration	D02462	2014 Indirect Prog Adm(TBTA-D1633)	Apr-14	\$2,200,000	\$2,200,000	Mar-14	\$2,200,000		
D605BB21	Service Building Rehabilitation	D03245	PM Construction F/A(TBTA-D1601)	Apr-14	\$405,000	\$405,000	Mar-14	\$405,000		
D605AW12	Hazardous Materials Abatement	D02978	Air Monit/DsgnMgt(PSC-12-2907A)	Apr-14	\$105,000	\$105,000	May-14	\$105,000		
D605AW12	Hazardous Materials Abatement	D02982	Air Monit/DsgnMgtPSC-12-2907B)	Apr-14	\$105,000	\$105,000	May-14	\$105,000		
D605AW12	Hazardous Materials Abatement	D02984	Air Monit/DsgnMgtPSC-12-2907D)	Apr-14	\$105,000	\$105,000	May-14	\$105,000		
D602RK65	Deck Replacement - Bronx/Manhattan Ramps/Toll Plaza	D03135	RK65R2-CM-Training(PSC-13-2937)	Apr-14	\$1,764,000	\$1,764,000	Jun-14	\$1,575,647		
D602HH88	Replace Upper & Lower Level Plza & Southbnd. Appr.	D03209	PM ORT F/A	Apr-14	\$70,000	\$70,000				\$0
D607RK65	Paint - Plaza and Approach Ramps	D03222	PM Design F/A	Apr-14	\$125,000	\$125,000				\$0
D607RK65	Paint - Plaza and Approach Ramps	D03223	Design	Apr-14	\$320,800	\$320,800				\$0
ED050201	Restore CBB Service Bldg	E01999	PM Const. F/A	Apr-14	\$54,379	\$54,379	Jan-14	\$54,379		
ED010209	Restore VNB TwrBase Elect/Lightg Sys+Ped Access Br	E02035	PM Const. F/A	Apr-14	\$19,720	\$19,720	Jul-14	\$89,145		
ED010209	Restore VNB TwrBase Elect/Lightg Sys+Ped Access Br	E02036	Constr.Adm. PSC-08-2849A, Task#34	Apr-14	\$165,000	\$165,000	Mar-14	\$157,367		
ED010209	Restore VNB TwrBase Elect/Lightg Sys+Ped Access Br	E02037	Construction GFM-495D,W/O#76	Apr-14	\$1,099,259	\$1,099,259	Apr-14	\$942,900		
ED040208	Replace MPB Lighting Systems	E02164	PM Construction F/A(TBTA-E1709)	Apr-14	\$26,000	\$26,000	May-14	\$54,000		
ED040208	Replace MPB Lighting Systems	E02165	Const. Admin. PSC-08-2849A Task #35	Apr-14	\$50,000	\$50,000	Apr-14	\$100,116		
ED010324	MPB/CBB Master Plan & Resiliency Needs	E02667	PM Design F/A	Apr-14	\$250,000	\$250,000	Aug-14	\$804,876		
ED010324	MPB/CBB Master Plan & Resiliency Needs	E02668	Scoping/ScopingStudy/Dsgn BriefPSC-12-2922	Apr-14	\$8,750,000	\$8,750,000	May-14	\$8,433,054		
ED05032A	Flood Mitigation -Studies/Conceptual Design HCT	E02670	BBT Study/Dsgn(PSC-06-2807C)Task#51	Apr-14	\$718,443	\$718,443	Mar-14	\$754,365		
ED05032A	Flood Mitigation -Studies/Conceptual Design HCT	E02672	BBT PM Design F/A(TBTA-E1767)	Apr-14	\$287,377	\$287,377	Jul-14	\$346,390		
ED05032B	Flood Mitigation -Studies/Conceptual Design QMT	E02671	QMT Study/Dsgn(PSC-06-2807C)Task#52	Apr-14	\$713,414	\$713,414	Mar-14	\$749,085		
ED05032B	Flood Mitigation -Studies/Conceptual Design QMT	E02673	QMT PM Design F/A(TBTA-E1768)	Apr-14	\$285,366	\$285,366	Jul-14	\$352,123		
<b>Apr-14 Total</b>					<b>\$19,518,758</b>	<b>\$19,518,758</b>				
D601QM18	Entrance and Exit Plazas Structural Rehabilitation	D02667	PM Constr. F/A - Ph.1	May-14	\$1,268,643	\$1,268,643	Nov-14	\$523,791		

MTA BRIDGES & TUNNELS  
CAPITAL PROGRAM  
2014 CAPITAL MILESTONE BACK-UP - PROJECT AWARDS

ACEP	Project Description	Task	Task Description	Goal Start Date	Goal Value	Budget Value	Actual Start Date	Actual Value	Forecast Start Date	Forecast Value
D601QM18	Entrance and Exit Plazas Structural Rehabilitation	D02668	CM -Plaza Ph.1 (PSC-13-2940)	May-14	\$1,575,495	\$1,575,495	May-14	\$1,510,659		
D601QM40	Tunnel Wall and Ceiling Repairs and Leak Control	D02679	PM Constr. F/A -Ph.1	May-14	\$1,500,503	\$1,500,503	Nov-14	\$1,224,000		
D601QM40	Tunnel Wall and Ceiling Repairs and Leak Control	D02681	Const. Adm.-Ph.1 (PSC-13-2940)	May-14	\$1,726,291	\$1,726,291	May-14	\$3,644,381		
D602RK75	Interim Repairs - Toll Plaza Deck	D03173	Const. Ph I wo#3	May-14	\$7,978,051	\$7,978,051	May-14	\$11,053,171		
D602HH88	Replace Upper & Lower Level Plza & Southbnd. Appr.	D03200	ORT Integrator(PSC-13-2949)	May-14	\$4,058,057	\$4,058,057	Jul-14	\$4,308,283		
ED010240	Restore Queens Midtown Tunnel - Structural	E02056	PM Const. F/A	May-14	\$3,595,000	\$3,595,000	Nov-14	\$4,330,000		
ED010240	Restore Queens Midtown Tunnel - Structural	E02059	Const. Adm. (PSC-13-2940)	May-14	\$6,292,000	\$6,292,000	May-14	\$5,999,561		
ED020203	Restore Queens Midtown Tunnel Roadway	E02118	PM Const. F/A	May-14	\$175,000	\$175,000				\$0
ED020203	Restore Queens Midtown Tunnel Roadway	E02120	Const. Adm. (PSC-13-2940)	May-14	\$306,000	\$306,000	May-14	\$422,846		
ED040281	Restore QMT Cntrl/Comm Sys, CCTV,Traffic Signals	E02186	PM Const. F/A	May-14	\$2,720,000	\$2,720,000				\$0
ED040281	Restore QMT Cntrl/Comm Sys, CCTV,Traffic Signals	E02187	Const. Adm. (PSC-13-2940)	May-14	\$4,758,000	\$4,758,000	May-14	\$5,979,153		
ED050203	Queens Midtown Tunnel Environmental Cleanup	E02204	Const. Adm. (PSC-13-2940)	May-14	\$421,000	\$421,000	May-14	\$771,904		
ED050204	Restore Queens Midtown Tunnel Vent Buildings	E02211	PM Const. F/A	May-14	\$500	\$500				\$0
ED050204	Restore Queens Midtown Tunnel Vent Buildings	E02213	Const. Adm.	May-14	\$800	\$800				\$0
D601BB28	Rehab. Walls, Roadway, Firelines, Ceiling Repair	D02560	P.M. Construction F/A	May-14	\$2,021,006	\$2,021,006	Nov-14	\$1,100,000		
D601BB28	Rehab. Walls, Roadway, Firelines, Ceiling Repair	D02561	Construction Adm.(PSC-13-2939)	May-14	\$5,379,720	\$5,379,720	May-14	\$3,454,708		
D602BB54	Replacement Brooklyn Plaza Structural Slab	D02573	Constr. Adm.(PSC-13-2939)	May-14	\$1,704,450	\$1,704,450	May-14	\$1,683,706		
ED050201	Restore CBB Service Bldg	E02004	Ph 3 - Construction	May-14	\$683,000	\$683,000			2015	\$0
ED010228	Restore Hugh L. Carey Tunnel - Structural	E02049	Const. Adm.(PSC-13-2939)	May-14	\$11,696,000	\$11,696,000	May-14	\$8,538,568		
ED020202	Restore Hugh L. Carey Tunnel Roadway	E02067	Const. Adm.(PSC-13-2939)	May-14	\$521,000	\$521,000	May-14	\$951,555		
ED040243	Restore Hugh L. Carey Tunnel Utilities	E02180	Const. Adm.(PSC-13-2939)	May-14	\$7,754,000	\$7,754,000	May-14	\$6,568,745		
ED050202	Hugh L. Carey Tunnel Environmental Cleanup	E02194	PM Design F/A(TBTA-E1847)	May-14	\$141,000	\$141,000	Sep-14	\$30,000		
ED050202	Hugh L. Carey Tunnel Environmental Cleanup	E02197	Const. Adm.(PSC-13-2939)	May-14	\$432,390	\$432,390	May-14	\$422,438		
ED050221	Restore Hugh L. Carey Tunnel Vent Bldgs	E02220	Const. Adm.(PSC-13-2939)	May-14	\$304,000	\$304,000				\$0
ED010228	Restore Hugh L. Carey Tunnel - Structural	E02047	PM Const. F/A	May-14	\$6,684,000	\$6,684,000	Nov-14	\$5,000,000		
ED050221	Restore Hugh L. Carey Tunnel Vent Bldgs	E02219	PM Const. F/A	May-14	\$174,000	\$174,000				\$0
ED020202	Restore Hugh L. Carey Tunnel Roadway	E02065	PM Const. F/A	May-14	\$298,000	\$298,000				\$0
D602BB54	Replacement Brooklyn Plaza Structural Slab	D02572	P.M. Const. F/A	May-14	\$1,379,462	\$1,379,462	Nov-14	\$550,000		
ED040243	Restore Hugh L. Carey Tunnel Utilities	E02178	PM Const. F/A	May-14	\$4,431,000	\$4,431,000				\$0
<b>May-14 Total</b>					<b>\$79,978,369</b>	<b>\$79,978,369</b>				
D505QM01	Service & FE Building Rehabilitation	D03190	QSB Garage Renovations (Ph 2 & 3)	Jun-14	\$3,090,638	\$3,090,638	Oct-14	\$3,369,241		
ED050201	Restore CBB Service Bldg	E02003	Ph 2a - Construction	Jun-14	\$1,000,000	\$1,000,000			2015	\$0
D605BB21	Service Building Rehabilitation	D02556	Construction	Jun-14	\$5,606,900	\$5,606,900	Jul-14	\$6,030,476		
D602RK65	Deck Replacement - Bronx/Manhattan Ramps/Toll Plaza	D02696	RK65R2 -Staff Reloc.D/B-TrainingFac	Jun-14	\$11,810,000	\$11,810,000	Jun-14	\$13,130,700		
D605BB43	Misc. Repairs at BP Garage	D03057	Construction	Jun-14	\$4,385,000	\$4,385,000				\$0
<b>Jun-14 Total</b>					<b>\$25,892,538</b>	<b>\$25,892,538</b>				
D606AW18	Protective Liability Insurance	D02452	2014 APPL	Jul-14	\$2,618,111	\$2,618,111	Jun-14	\$1,221,040		
D602MP21	Rehabilitate Rockaway Point Blvd Overpass	D02656	Construction Adm.	Jul-14	\$608,917	\$608,917	Nov-14	\$373,401		
D601RK23	Miscellaneous Rehab - Manhattan Approach Ramps	D02686	P.M. Construction F/A	Jul-14	\$1,900,000	\$1,900,000	Jul-14	\$1,900,000		
D601RK23	Miscellaneous Rehab - Manhattan Approach Ramps	D02687	Constr Adm.(PSC-14-2956)	Jul-14	\$4,818,700	\$4,818,700	Dec-14	\$7,169,100		
D602RK65	Deck Replacement - Bronx/Manhattan Ramps/Toll Plaza	D02704	RK65B-P.M. Design F/A	Jul-14	\$500,000	\$500,000	Sep-14	\$500,000		
D604MP03	Programmable Logic Controller & Mechanical Rehab.	D03202	Ph1- PM D/B Cns F/A	Jul-14	\$350,000	\$350,000			2015	\$0
D604MP03	Programmable Logic Controller & Mechanical Rehab.	D03203	Ph 1-PM Construction Adm.	Jul-14	\$400,000	\$400,000			2015	\$0
ED040207	Replace MPB Electrical Equipmt at North Abutment	E02158	Const. Adm.	Jul-14	\$262,500	\$262,500			2015	\$0
ED040210	Repl CBB Mech&Elect Equip-S. Abutment & Svc Bldg	E02172	Const. Adm.	Jul-14	\$675,000	\$675,000			2015	\$0
ED040207	Replace MPB Electrical Equipmt at North Abutment	E02157	PM Design/Build F/A	Jul-14	\$212,250	\$212,250			2015	\$0

MTA BRIDGES & TUNNELS  
CAPITAL PROGRAM  
2014 CAPITAL MILESTONE BACK-UP - PROJECT AWARDS

ACEP	Project Description	Task	Task Description	Goal Start Date	Goal Value	Budget Value	Actual Start Date	Actual Value	Forecast Start Date	Forecast Value
ED040210	Repl CBB Mech&Elect Equip-S. Abutment & Svc Bldg	E02171	PM Const. F/A	Jul-14	\$138,000	\$138,000			2015	\$0
				<b>Jul-14 Total</b>	<b>\$12,483,478</b>	<b>\$12,483,478</b>				
D602RK65	Deck Replacement - Bronx/Manhattan Ramps/Toll Plaza	D02701	RK65A-P.M. Construction F/A	Aug-14	\$6,061,801	\$6,061,801	Sep-14	\$4,100,000		
D607RK65	Paint - Plaza and Approach Ramps	D02711	Bx.Plz & Appr Ramps-Paint PM Constr	Aug-14	\$973,691	\$973,691	Sep-14	\$640,000		
D602RK75	Interim Repairs - Toll Plaza Deck	D02719	P.M. Construction F/A Ph.II	Aug-14	\$1,199,220	\$1,199,220	Oct-14	\$1,150,000		
				<b>Aug-14 Total</b>	<b>\$8,234,712</b>	<b>\$8,234,712</b>				
D601VN34	Verrazano-Narrows Bridge Main Cable Testing	D02767	Design (PSC-14-2961)	Sep-14	\$2,932,230	\$2,932,230	Oct-14	\$2,601,098		
D601VN34	Verrazano-Narrows Bridge Main Cable Testing	D02768	P.M. Design F/A	Sep-14	\$700,172	\$700,172	Sep-14	\$700,172		
D602RK75	Interim Repairs - Toll Plaza Deck	D02843	Const. Support Svcs(PSC-11-2865)	Sep-14	\$1,000,000	\$1,000,000	Nov-14	\$295,724		
D601RK23	Miscellaneous Rehab - Manhattan Approach Ramps	D02902	Design During Cns(CSS)PSC11-2884	Sep-14	\$4,420,502	\$4,420,502	Oct-14	\$1,995,275		
D601QM18	Entrance and Exit Plazas Structural Rehabilitation	D02947	Design During Cns(CSS)	Sep-14	\$610,700	\$610,700			2015	\$0
D602BB54	Replacement Brooklyn Plaza Structural Slab	D02993	Design During CNS (CSS)	Sep-14	\$395,064	\$395,064	Jul-14	\$345,040		
D602RK65	Deck Replacement - Bronx/Manhattan Ramps/Toll Plaza	D03006	RK65A-DsgnDuring Cns-CSS	Sep-14	\$4,689,878	\$4,689,878	Nov-14	\$5,063,359		
D601BB28	Rehab. Walls, Roadway, Firelines, Ceiling Repair	D03011	Design during Constr. (CSS)	Sep-14	\$764,680	\$764,680	Jul-14	\$793,567		
D601QM40	Tunnel Wall and Ceiling Repairs and Leak Control	D03016	Design During Cns. (CSS)(PSC12-2920)	Sep-14	\$500,000	\$500,000	Dec-14	\$1,039,096		
D601RK76	Miscellaneous Structural Repair	D03081	P.M. Construction F/A	Sep-14	\$750,000	\$750,000	Dec-14	\$593,000		
D601RK76	Miscellaneous Structural Repair	D03082	Construction Admin	Sep-14	\$2,000,000	\$2,000,000	Oct-14	\$641,558		
D604MP03	Programmable Logic Controller & Mechanical Rehab.	D03188	Ph1-Design/Build - Generator	Sep-14	\$2,500,470	\$2,500,470			2015	\$0
D604MP03	Programmable Logic Controller & Mechanical Rehab.	D03201	Ph 1-Design Build Stipend Generator	Sep-14	\$50,400	\$50,400			2015	\$0
D601RK23	Miscellaneous Rehab - Manhattan Approach Ramps	D03213	NYC Dept of Parks - HRD Ramp Mitigation	Sep-14	\$2,000,000	\$1,225,450			2015	\$0
D601RK23	Miscellaneous Rehab - Manhattan Approach Ramps	D03269	MOU-DPR Relocation(MOU14-66)	Sep-14	\$0	\$454,000	Nov-14	\$454,000		
D601RK23	Miscellaneous Rehab - Manhattan Approach Ramps	D03274	MOU- Tree Mitigation(MOU14-67)	Sep-14	\$0	\$320,550	Dec-14	\$320,550		
D602RK75	Interim Repairs - Toll Plaza Deck	D03219	Construction PhII (1)	Sep-14	\$1,400,000	\$1,400,000				\$0
D607RK65	Paint - Plaza and Approach Ramps	D03224	PM Const. F/A	Sep-14	\$276,000	\$276,000	Sep-14	\$276,000		
D607RK65	Paint - Plaza and Approach Ramps	D03225	Paint-Constr. Adm	Sep-14	\$828,000	\$828,000	Oct-14	\$1,079,672		
D607RK65	Paint - Plaza and Approach Ramps	D03226	RK44-Construction (GFM513)	Sep-14	\$5,420,000	\$5,420,000	Sep-14	\$4,726,949		
ED010228	Restore Hugh L. Carey Tunnel - Structural	E02048	Design During Constr (PSC-12-2913)	Sep-14	\$7,172,819	\$7,172,819	Jul-14	\$1,961,710		
ED010240	Restore Queens Midtown Tunnel - Structural	E02058	Design during Constr	Sep-14	\$3,452,780	\$3,452,780	Dec-14	\$1,650,998		
ED020203	Restore Queens Midtown Tunnel Roadway	E02119	Design During Constr	Sep-14	\$163,235	\$163,235	Dec-14	\$120,771		
ED040207	Replace MPB Electrical Equipmt at North Abutment	E02159	Design/Build	Sep-14	\$3,675,000	\$3,675,000			2015	\$0
ED040210	Repl CBB Mech&Elect Equip-S. Abutment & Svc Bldg	E02173	Design/Build	Sep-14	\$6,300,000	\$6,300,000			2015	\$0
ED040243	Restore Hugh L. Carey Tunnel Utilities	E02179	Design During Constr (PSC-12-2913)	Sep-14	\$3,389,807	\$3,389,807	Jul-14	\$1,508,373		
ED040281	Restore QMT Cntrl/Comm Sys, CCTV,Traffic Signals	E02188	Design during Constr	Sep-14	\$1,587,129	\$1,587,129	Dec-14	\$1,704,989		
ED050202	Hugh L. Carey Tunnel Environmental Cleanup	E02195	Design During Const.(PSC-12-2913)	Sep-14	\$378,000	\$378,000	Jul-14	\$97,536		
ED050204	Restore Queens Midtown Tunnel Vent Buildings	E02210	Design & CSS	Sep-14	\$602	\$602				\$0
ED050221	Restore Hugh L. Carey Tunnel Vent Bldgs	E02467	Design During Constr (PSC-12-2913)	Sep-14	\$146,331	\$146,331				\$0
				<b>Sep-14 Total</b>	<b>\$57,503,799</b>	<b>\$57,503,799</b>				
D602MP21	Rehabilitate Rockaway Point Blvd Overpass	D02655	PM D/B Construction F/A	Oct-14	\$450,000	\$450,000	Dec-14	\$313,000		
D602RK65	Deck Replacement - Bronx/Manhattan Ramps/Toll Plaza	D02699	RK65A-Construction	Oct-14	\$190,000,000	\$190,000,000	Dec-14	\$203,623,272		
D602RK65	Deck Replacement - Bronx/Manhattan Ramps/Toll Plaza	D02703	RK65B-Design	Oct-14	\$4,000,000	\$4,000,000	Dec-14	\$3,823,500		
D607RK65	Paint - Plaza and Approach Ramps	D02709	Bx.Plz & Appr Ramps-Painting - Cns.	Oct-14	\$16,500,000	\$16,500,000	Dec-14	\$14,323,610		
D601TN52	Miscellaneous Structural Rehabilitation	D03024	Design (TN-52A)PSC-06-2807A #42B	Oct-14	\$797,282	\$797,282	Mar-14	\$227,326		
D601TN52	Miscellaneous Structural Rehabilitation	D03025	P.M. Construction F/A (TN-52A)	Oct-14	\$600,000	\$600,000	Oct-14	\$640,000		
D601TN52	Miscellaneous Structural Rehabilitation	D03026	Construction (TN-52A)	Oct-14	\$6,600,000	\$6,600,000	Nov-14	\$7,294,350		
D601TN52	Miscellaneous Structural Rehabilitation	D03027	Construction Admin. (TN-52A)	Oct-14	\$600,000	\$600,000	Oct-14	\$810,467		
D602MP21	Rehabilitate Rockaway Point Blvd Overpass	D03210	Design/Build	Oct-14	\$7,500,000	\$7,500,000			2015	\$0
D602MP21	Rehabilitate Rockaway Point Blvd Overpass	D03211	Design/Build Stipend	Oct-14	\$152,000	\$152,000			2015	\$0

MTA BRIDGES & TUNNELS  
CAPITAL PROGRAM  
2014 CAPITAL MILESTONE BACK-UP - PROJECT AWARDS

ACEP	Project Description	Task	Task Description	Goal Start Date	Goal Value	Budget Value	Actual Start Date	Actual Value	Forecast Start Date	Forecast Value
D602RK75	Interim Repairs - Toll Plaza Deck	D03220	Construction Ph. II (GFM509J WO#18)	Oct-14	\$1,800,000	\$1,800,000	Oct-14	\$3,279,203		
				<b>Oct-14 Total</b>	<b>\$228,999,282</b>	<b>\$228,999,282</b>				
D601BB28	Rehab. Walls, Roadway, Firelines, Ceiling Repair	D02562	Construction	Nov-14	\$61,000,000	\$61,000,000	Dec-14	\$48,722,367		
D601BB28	Rehab. Walls, Roadway, Firelines, Ceiling Repair	D02563	Operations - F/A (Maintenance Crews)	Nov-14	\$500,000	\$500,000	Dec-14	\$143,000		
D602BB54	Replacement Brooklyn Plaza Structural Slab	D02574	Construction	Nov-14	\$23,700,000	\$23,700,000	Dec-14	\$12,675,850		
D602HH88	Replace Upper & Lower Level Plza & Southbnd. Appr.	D03062	Design During Cns (CSS)	Nov-14	\$1,500,000	\$1,500,000	Dec-14	\$1,282,800		
D602RK75	Interim Repairs - Toll Plaza Deck	D03221	SBMP-Cns PhII (3)	Nov-14	\$2,800,000	\$2,800,000				\$0
ED010228	Restore Hugh L. Carey Tunnel - Structural	E02050	Construction	Nov-14	\$167,088,000	\$167,088,000	Dec-14	\$86,509,086		
ED020202	Restore Hugh L. Carey Tunnel Roadway	E02068	Construction	Nov-14	\$7,440,000	\$7,440,000	Dec-14	\$5,408,672		
ED040243	Restore Hugh L. Carey Tunnel Utilities	E02181	Construction	Nov-14	\$110,769,000	\$110,769,000	Dec-14	\$117,783,306		
ED050221	Restore Hugh L. Carey Tunnel Vent Bldgs	E02221	Construction	Nov-14	\$4,346,000	\$4,346,000				\$0
ED050202	Hugh L. Carey Tunnel Environmental Cleanup	E02307	Construction Ph II	Nov-14	\$6,244,600	\$6,244,600	Dec-14	\$14,066,626		
				<b>Nov-14 Total</b>	<b>\$385,387,600</b>	<b>\$385,387,600</b>				
D605AW12	Hazardous Materials Abatement	D02983	Air Monit/DsgnMgt(PSC-12-2907 C)	Dec-14	\$105,000	\$105,000	Jul-14	\$105,000		
D601RK23	Miscellaneous Rehab - Manhattan Approach Ramps	D02688	Construction (125/124 St., & HRD Ramps)	Dec-14	\$98,500,000	\$98,500,000	Dec-14	\$68,565,001		
D602VN03	Toll Plaza - East & West Bound Ramps Improvements	D02765	Operations F/A	Dec-14	\$628,000	\$628,000				\$0
D602HH88	Replace Upper & Lower Level Plza & Southbnd. Appr.	D03063	Construction	Dec-14	\$23,500,000	\$23,500,000	Dec-14	\$19,242,746		
D602HH88	Replace Upper & Lower Level Plza & Southbnd. Appr.	D03064	Construction Admin	Dec-14	\$2,000,000	\$2,000,000	Sep-14	\$2,415,321		
D602HH88	Replace Upper & Lower Level Plza & Southbnd. Appr.	D03065	PM Construction F/A	Dec-14	\$1,000,000	\$1,000,000	Nov-14	\$1,000,000		
D602HH88	Replace Upper & Lower Level Plza & Southbnd. Appr.	D03070	Operations F/A	Dec-14	\$300,000	\$300,000	Jul-14	\$300,000		
D601RK76	Miscellaneous Structural Repair	D03083	Construction	Dec-14	\$12,000,000	\$12,000,000	Dec-14	\$2,635,295		
				<b>Dec-14 Total</b>	<b>\$138,033,000</b>	<b>\$138,033,000</b>				
				<b>Grand Total</b>	<b>\$976,833,285</b>	<b>\$976,833,285</b>				
<b>Unplanned Commitments</b>										
D604AW80	Advanced Traveler Infomation Systems	D02531	AW80 Equipment Purchase			\$42,000	Feb-14	\$42,000		
D606AW28	Scope Development	D03208	ScopingSvc H07A (PSC-12-2916D)			\$62,467	Feb-14	\$313,625		
D606AW28	Scope Development	D03198	ScopeDev-TN54-Amd #2 /wo #53			\$78,158	Feb-14	\$78,158		
D606AW28	Scope Development	D03199	ScopeDev-TN-53A-Amd #3/Task #54			\$115,574	Feb-14	\$115,574		
D606AW28	Scope Development	D03229	TN58 Scope Development (PSC-06-2807D, TASK#22)			\$134,352	Mar-14	\$134,352		
D606AW22	Miscellaneous	D03235	VE-BCOR-RK23A(PSC-06-2807D wo#23,A)			\$169,665	Mar-14	\$165,099		
D606AW22	Miscellaneous	D03236	Const Rev-QM18 PSC-06-2807D wo#25			\$41,761	Mar-14	\$41,761		
D606AW22	Miscellaneous	D03237	VE-BCOR-BB28/BB54(PSC-12-2891Ewo#5)			\$519,044	Mar-14	\$519,044		
D604VN87	Substation #1 Rehabilitation	D03176	D/B Stipend #2-T.Moriarty			\$72,000	Mar-14	\$72,000		
D604VN87	Substation #1 Rehabilitation	D03179	D/B Stipend #3-Welsbach Elec.			\$72,000	Mar-14	\$72,000		
D606AW22	Miscellaneous	D03242	Const Rev-MP03-PSC-06-2807E wo #16			\$60,946	Apr-14	\$60,946		
D505QM01	Service & FE Building Rehab	D02019	QM01X-CM.(Ph2&3)PSC-13-2923Ewo3			\$657,250	Apr-14	\$657,250		
D505AW12	Hazardous Material Abatement	D03244	Asb.Abatement-QM01x (05-HS-2729D#43)			\$46,486	May-14	\$46,486		
D505AW12	Hazardous Material Abatement	D03196	Asb.Abatement-QM30 (05-HS-2729A#45)			\$55,188	May-14	\$55,188		
D606AW28	Scope Development	D03218	Scope Dev.-CB18 (PSC-06-2807C wo56)			\$415,323	May-14	\$415,323		
D606AW22	Miscellaneous	D03251	Risk Assess, Est.RK23A-PSC-12-2891E			\$374,177	May-14	\$374,177		
D606AW22	Miscellaneous	D03243	Value Engineering/Constability Review/Risk Assess-QM40/S-VE/RA-QM18-2891E 10			\$708,870	May-14	\$708,870		

MTA BRIDGES & TUNNELS  
CAPITAL PROGRAM  
2014 CAPITAL MILESTONE BACK-UP - PROJECT AWARDS

ACEP	Project Description	Task	Task Description	Goal Start Date	Goal Value	Budget Value	Actual Start Date	Actual Value	Forecast Start Date	Forecast Value
D602RK65	Deck Replacement - Bronx/Manhattan Ramps/Toll Plaza	D03250	RK-65A-OperaFA Retrofit(TBTA-D1663)			\$51,000	Jun-14	\$51,000		
D602RK65	Deck Replacement - Bronx/Manhattan Ramps/Toll Plaza	D03249	RK-65A-Mat'ls for Retrofit			\$46,000	Jun-14	\$46,000		
D606AW28	Scope Development	D03231	Scope Dev-HH13(PSC-12-2891A,wo14)			\$310,195	Jun-14	\$310,195		
ED040301	Flood Mitigation-Equip.Relocations-Agency-Wide	E02662	BBT(BB-21)CMFloodHardPSC-13-2923E-F			\$21,368	Jun-14	\$21,368		
ED040301	Flood Mitigation-Equip.Relocations-Agency-Wide	E02657	BBT(BB-21)CMEqRelocatPSC-13-2923E-F			\$274,830	Jun-14	\$274,830		
D602RK75	Interim Repairs - Toll Plaza Deck	D03183	RK-75-Air Monit (12-2907A WO 1)			\$22,621	Jun-14	\$22,621		
D602RK75	Interim Repairs - Toll Plaza Deck	D03184	RK-75-Proj Monit-(07-2815C WO 171A)			\$16,628	Jun-14	\$16,628		
D605AW12	Hazardous Material Abatement	D03253	Asb. Abatement-QMT (05-HS-2729D#42)			\$20,134	Jun-14	\$20,134		
ED040301	Flood Mitigation-Equip.Relocations-Agency-Wide	E02661	(BB-21)Constr FA Hardng(TBTA-E1776			\$6,993	Jul-14	\$6,993		
ED040301	Flood Mitigation-Equip.Relocations-Agency-Wide	E02663	BBT(BB-21)Operations FA(TBTA-E1775)			\$50,413	Jul-14	\$50,413		
D603AW48	2nd Generation E-Zpass In-Lane	D03261	AET-Scoping PSC-13-2941B wo#1			\$52,408	Jul-14	\$52,408		
D606AW22	Miscellaneous	D3241	Per Rev-HH89 PSC-12-2891G wo#25			\$198,402	Jul-14	\$198,402		
ED020202	Restore Hugh L. Carey Tunnel Roadway	E02066	Design During CNS (PSC-12-2913)			\$217,968	Jul-14	\$217,968		
ED050202	Hugh L. Carey Tunnel Environmental Cleanup	E03135	Design & CSS Ph1(PSC-12-2913)			\$181,395	Jul-14	\$181,395		
ED040301	Flood Mitigation-Equip.Relocations-Agency-Wide	E02656	BBT(BB-21)Constr FA Eqp(TBTA-E1777)			\$118,231	Jul-14	\$118,231		
ED040301	Flood Mitigation-Equip.Relocations-Agency-Wide	E02658	BBT(BB-21) Constr. Equip Relocation			\$2,000,941	Jul-14	\$2,000,941		
ED040301	Flood Mitigation-Equip.Relocations-Agency-Wide	E02660	BBT(BB-21) Constr. Flood Hardening			\$125,744	Jul-14	\$125,744		
ED010228	Restore Hugh L. Carey Tunnel - Structural	E03060	Dsgn-Prototype(PSC-12-2913)-nonFema			\$706,254	Jul-14	\$706,254		
D603AW48	2nd Generation E-Zpass In-Lane	D03262	Develop AET Database PSC13-2941B #2			\$62,306	Aug-14	\$62,306		
D606AW22	Miscellaneous	D03260	VE/BCOR-TN60(PSC-12-2891 Task #18)			\$128,632	Aug-14	\$128,632		
D606AW22	Miscellaneous	D03264	VE-HH88B (PSC-12-2891G Task #17)			\$91,207	Aug-14	\$91,207		
D606AW22	Miscellaneous	D03265	CR/OS-MP16/03ph2 (PSC12-2891C wo21)			\$116,902	Sep-14	\$116,902		
ED050301	Flood Mitigation-Relocate Rev Equip -VN	E03332	Asbestos/Lead survey			\$3,524	Oct-14	\$3,524		
ED040302	Flood Mitigation-Equip.Relocations-QMT	E03320	QMT-Relocation Equipment			\$82,434	Oct-14	\$82,434		
D602RK65	Deck Replacement - Bronx/Manhattan Ramps/Toll Plaza	D03275	RK-65A -CSXT Flagging Svc.MOU14-65A			\$25,728	Oct-14	\$25,728		
D602RK65	Deck Replacement - Bronx/Manhattan Ramps/Toll Plaza	D03279	RK-65A-Toll Equip. Retrofit 4 Lanes			\$14,020	Oct-14	\$14,020		
D601RK65	Deck Replacement - Bronx/Manhattan Ramps/Toll Plaza	D03136	RK65R2-PM Cns F/A Training Fac			\$1,200,000	Oct-14	\$1,200,000		
ED040302	Flood Mitigation-Equip.Relocations-QMT	E03235	QMT-Raise Generator (QM30)			\$456,493	Oct-14	\$525,793		
D601RK76	Miscellaneous Structural Repair	D03276	RK-76 - CSXT Flagging Svc.MOU14-65B			\$105,744	Oct-14	\$105,744		
D602RK65	Deck Replacement - Bronx/Manhattan Ramps/Toll Plaza	D03248	RK-65A-Toll Equip. Retrofit 4 Lanes			\$179,232	Nov-14	\$179,232		
ED010228	Restore Hugh L. Carey Tunnel - Structural	E02989	SBMP-BB28X2-Remove Ceiling Tile			\$575,400	Nov-14	\$575,400		
D602RK65	Deck Replacement - Bronx/Manhattan Ramps/Toll Plaza	D03254	RK-65A-OpsF/A(Maint CrewsTBTA-D1727			\$701,015	Dec-14	\$701,015		
ED010228	Restore Hugh L. Carey Tunnel - Structural	E02466	Operatns F/A(Maint Crew-TBTA-E1987)			\$681,000	Dec-14	\$681,000		
ED050201	Restore CBB Service Bldg	E03174	SBMP Cns-Demo of femaleBTO trailer			\$138,810	Dec-14	\$138,810		
ED050303	Hugh Carey Tunnel-GIVB Mitigation -Raise Seawalls	E03126	2014 ScoopStudGIVBSeawallPSC-12-2891			\$335,090	Dec-14	\$335,090		
ED040281	Restore QMT Cntrl/Comm Sys, CCTV,Traffic Signals	E03379	Design (PSC-06-2805) nonFEMA			\$219,491	Dec-14	\$219,491		
ED040243	Restore Hugh L. Carey Tunnel Utilities	E03245	Construction- pumps conversion			\$2,257,285	Dec-14	\$2,257,285		
D603AW48	2nd Generation E-Zpass In-Lane	D03263	HHORT-Proj.Sup./LessonPSC13-2941B#3			\$538,224	Dec-14	\$538,224		
ED060201	Sandy Program Administration	E03218	Grants Management(TBTA-E1994)			\$1,170,000	Dec-14	\$1,170,000		
ED060201	Sandy Program Administration	E03219	E&C Support(TBTA-E1994)			\$1,415,000	Dec-14	\$1,415,000		
ED050203	Queens Midtown Tunnel Environmental Cleanup	E02205	Design during Constr (PSC-12-2920)			\$220,228	Dec-14	\$220,228		
Grand Total					\$976,833,285	\$995,597,835	YTD Total	\$808,070,662	Remaining	\$0
									Grand Total	\$808,070,662



# Bridges and Tunnels

---

---

## Procurements January 2015

---

---



# Staff Summary

<b>Subject:</b>	Request for Authorization to Award Various Procurements
<b>Department:</b>	Procurement
<b>Department Head Name</b>	M. Margaret Terry <i>mmt</i>
<b>Department Head Signature</b>	
<b>Project Manager Name</b>	Various

<b>Date</b>	January 6, 2015
<b>Vendor Name</b>	
<b>Contract Number</b>	
<b>Contract Manager Name</b>	
<b>Table of Contents Ref #</b>	

Board Action					
Order	To	Date	Approval	Info	Other
1	President	1/6/15	<i>[Signature]</i>		
2	MTA B&T Committee	1/20/15			
3	MTA Board	1/21/15			

Internal Approvals			
Order	Approval	Order	Approval
	President	<i>[Signature]</i>	VP Operations
	Executive Vice President		VP & Chief Engineer
	SVP & General Counsel		Chief Procurement Officer
	VP Administration		

Internal Approvals (cont.)							
Order	Approval	Order	Approval	Order	Approval	Order	Approval
	Chief Financial Officer <i>[Signature]</i>		Chief Technology Officer		Chief Health & Safety Officer		Chief EEO Officer
	Chief Security Officer		Chief Maintenance Officer		MTA Office of Civil Rights		

## PURPOSE:

To obtain approval of the Board to award various contracts and purchase orders, and to inform the MTA B&T Committee of these procurement actions.

## DISCUSSION:

MTA B&T proposes to award Non-Competitive procurements in the following categories: None.

MTA B&T proposes to award Competitive procurements in the following categories:

Schedules Requiring Majority Vote		# of Actions	\$ Amount
Schedule F	Personal Service Contracts	1	\$ 2.307M
Schedule G	Miscellaneous Service Contracts	2	\$ 1.288M
Schedule H	Modifications to Personal/Miscellaneous Service Contracts	1	\$ 0.0M
Schedule I	Modifications to Purchase & Public Works Contracts	1	\$ 1.335M
SUBTOTAL		5	\$ 4.930M

MTA B&T presents the following procurement actions for Ratification: None.

TOTAL	5	\$ 4.930M
-------	---	-----------

## BUDGET IMPACT:

The purchases/contracts will result in obligating MTA B&T and Capital funds in the amount listed. Funds are available in the current MTA B&T operating/capital budgets for this purpose.

## RECOMMENDATION:

That the purchases/contracts be approved as proposed. (Items are included in the resolution of approval at the beginning of the Procurement Section.)

The legal name of MTA Bridges and Tunnels is Triborough Bridge and Tunnel Authority.

**LIST OF COMPETITIVE PROCUREMENTS FOR BOARD APPROVAL**  
**JANUARY 2015**

**MTA BRIDGES & TUNNELS**

**Procurements Requiring Majority Vote:**

**F: Personal Service Contracts**

(Staff Summaries required for items greater than: \$100K Sole Source; \$250K Other Non-Competitive; \$1M Competitive)

1. **EnviroMed Services, Inc.** **\$2,306,818.38** **Staff Summary Attached**  
**Contract No. PSC-14-2962X**  
2 yr. contract - Competitive RFP - 3 Proposals  
Provide Independent Safety Monitoring Services for Ongoing B&T Construction Projects.

**G: Miscellaneous Service Contracts**

(Staff Summaries required for items greater than: \$100K Sole Source; \$250K Other Non-Competitive; 1M RFP; No Staff Summary required if Sealed Bid Procurement)

2. **Nationwide Auto Painting, Inc.** **\$481,550.00 - B&T**  
**Contract No. 14-MNT-2933** **\$653,070.00 - NYCT**  
**Total \$1,134,620.00**

4 yr. contract – Competitive Bid – Low responsive bid/4 bids

In October 2014 B&T issued a joint solicitation for a contractor to provide all labor, materials and equipment necessary to perform body repairs for B&T's fleet of light, medium and heavy duty vehicles and NYCT's fleet of medium and heavy duty vehicles on an as needed basis for a four (4) year period. This work was outsourced since the agencies neither have the equipment nor the resources required to perform these services on an in-house basis. The service requirements were publicly advertised. The solicitation notice was sent to 109 firms and eleven firms requested copies of the solicitation. On December 4 the following bids were submitted:

<u>Bidders</u>	<u>B&amp;T</u>	<u>NYCT</u>	<u>Total</u>
XXL Auto Body Shop LLC*	\$307,000	\$438,320	\$745,320
Nationwide Auto Painting, Inc.	\$481,550	\$653,070	\$1,134,620
Truck and Trailer Service, LTD	\$529,000	\$880,320	\$1,409,320
Climaco Auto Body Inc.	\$740,500	\$1,048,320	\$1,788,820

\*XXL Auto Body Shop LLC has been determined to be non-responsive.

This solicitation included a modest reduction in hours for scheduled and unscheduled body and paint repairs for NYCT's medium and heavy duty vehicles. The scope of services under B&T's portion of the prospective contract has not changed compared with that under



**LIST OF COMPETITIVE PROCUREMENTS FOR BOARD APPROVAL**  
**JANUARY 2015**

its current contract. The prices are fixed for the four year duration of the contract. A price analysis comparing the prospective rates under this procurement with the rates under its current contract reflects an overall average increase of approximately 20%. This difference may be attributed to increased material and labor costs. In connection with the agencies' estimates, however, the bid amounts are: (i) 9% lower than the estimate of \$529,000 for B&T and (ii) 0.04% lower than the estimate of \$653,320 for NYCT. After evaluation of the bids, it was determined that Nationwide Auto Painting, Inc. is a responsive, responsible bidder. Based on competition, the prices are considered fair and reasonable. The MTA Department of Diversity and Civil Rights has established goals of 0% MBE and 0% WBE for this contract. Funding for B&T is available in its Operating Budget under GL #710901. NYCT has funding available in its Operating Budget to support this contract.

**3. Triport International A.G.E.R., Inc. \$153,400.00**  
**Contract No. 13-MNT-2921**

5yr. contract – Competitive Bid – Low responsive bid/3 bids

In October 2014 B&T issued a solicitation for a contractor to perform scheduled and unscheduled maintenance and repairs, safety inspections and testing of our aerial lift equipment. Due to the specialized training and equipment necessary to perform the work, B&T neither possesses the resources nor the equipment to perform the services on an in-house basis. The service requirements were publicly advertised and a solicitation notice was sent to 318 firms; three firms requested copies of the solicitation. On October 24 three bids were submitted as follows:

<u>Bidders</u>	<u>Bid Amount</u>
Triport International A.G.E.R., Inc.	\$153,400
Aerial Rise LLC	\$158,700 *
Dependable Repair Inc.	\$167,000

\*B&T corrected math error

The scope of services for the first two years of this five year prospective contract differ compared with the initial two year period of the current contract. Semi-annual preventive maintenance inspections were removed under the new contract since this service is no longer required. The hours for scheduled and unscheduled maintenance and repairs were reduced due to a 20% reduction of aerial lift equipment units. All other line items remained the same. The rates under the prospective contract are fixed over the five year period and have not increased compared with those under the current contract. Triport's overall bid is 9% lower than the user's estimate of \$168,500. It has been determined that Triport is fully responsive to the requirements of the solicitation. Based on competition, the price is considered fair and reasonable. This firm is deemed to be a responsible contractor. No M/WBE goals were established by the MTA Department of Diversity and Civil Rights. Funding is available in the Operating Budget under General Ledger #710901.

**LIST OF COMPETITIVE PROCUREMENTS FOR BOARD APPROVAL**  
**JANUARY 2015**

**H: Modifications to Personal Service Contracts and Miscellaneous Service Contracts Awarded as Contracts for Services**

(Approvals/Staff Summaries required for substantial change orders and change orders that cause original contract to equal or exceed monetary or durational threshold required for Board approval)

4. **Peter C. Merani, P.C.** **\$0.00** **Staff Summary Attached**  
**Leopold, Gross & Sommers, P.C.**  
**Contract Nos. PSC-13-2948A and B**

Modify two legal retainer agreements to exercise the one-year option under each contract to enable the firms to provide professional services in connection with toll and non-toll collection and related activities on an as-needed basis.

**I: Modifications to Purchase & Public Works Contracts**

(Approvals/Staff Summaries required for individual change orders greater than \$250K. Approvals without Staff Summaries required for change orders greater than 15% of previous approved amount which are also at least \$50K)

5. **Restani Construction Corp.** **\$1,335,000.00** **Staff Summary Attached**  
**Contract No. VN-03B**

Add funding to provide an incentive payment to the contractor for early completion of work under Contract VN-03B, Toll Plaza Improvements at the Verrazano-Narrows Bridge.

# Staff Summary

Page 1 of 2

Item Number 1 (Final)					
Dept & Dept Head Name: <i>Send to DS for</i> Engineering & Construction, Joe Keane P.E.					
Division & Division Head Name: <i>Ed Stathopoulos</i> Engineering & Construction, Aris Stathopoulos, P.E.					
Board Reviews					
Order	To	Date	Approval	Info	Other
1	President	01/06/15	<i>[Signature]</i>		
2	MTA B&T Committee	01/20/15			
3	MTA Board	01/21/15			
Internal Approvals					
Order	Approval	Order	Approval		
1	Chief Financial Officer <i>[Signature]</i>	4	Chief of Staff		
2	General Counsel <i>[Signature]</i>	5	Executive Vice President <i>[Signature]</i>		
3	Chief Procurement Officer <i>[Signature]</i>	6	President <i>[Signature]</i>		

SUMMARY INFORMATION	
Vendor Name EnviroMed Services, Inc., Meriden CT	Contract Number PSC-14-2962X
Description Independent Safety Monitoring Services for Ongoing Authority Construction Projects	
Total Amount \$2,306,818.38	
Contract Term (Including Options, if any) Two (2) Years	
Option(s) included in Total Amount? <input type="checkbox"/> Yes <input checked="" type="checkbox"/> No	
Renewal? <input checked="" type="checkbox"/> Yes <input type="checkbox"/> No	
Procurement Type <input checked="" type="checkbox"/> Competitive <input type="checkbox"/> Non-competitive	
Solicitation Type <input checked="" type="checkbox"/> RFP <input type="checkbox"/> Bid <input type="checkbox"/> Other:	
Funding Source <input checked="" type="checkbox"/> Operating <input type="checkbox"/> Capital <input type="checkbox"/> Federal <input type="checkbox"/> Other:	

## Narrative

### PURPOSE/RECOMMENDATION

B&T is seeking Board approval under the All Agency Guidelines for Procurement of Services to award a personal service contract to provide independent safety monitoring services for ongoing B&T construction projects to the incumbent EnviroMed Services, Inc. (EnviroMed) for a period of two (2) years at a cost of \$2,306,818.38.

### DISCUSSION

B&T requires the services of a consultant to provide independent safety monitoring services for ongoing B&T construction projects. The Contract requires the Consultant to perform short term and continuous on-site monitoring; safety analysis; report preparation and presentations; and additional services as required to aid in ensuring a safe working environment on B&T construction projects.

The service requirements were publicly advertised and eight (8) firms submitted qualification information: EnTech; EnviroMed Services, Inc. (EnviroMed); Kupper Engineering Inc; LS Engineering; PARS Environmental Inc; Pyramid Health & Safety Solutions; Safety Dynamics; Safety First. Five (5) firms were chosen to receive the RFP based on a review of those qualifications and three (3) firms submitted proposals. The proposals were evaluated against established criteria set forth in the RFP including an understanding of the technical requirements and expertise, qualifications of proposed personnel, oral presentations and cost. The Selection Committee unanimously selected EnviroMed based on: their demonstrated knowledge concerning project safety; the team's current approach which utilizes quality assurance, cross checking and feedback methodologies for stakeholders; current quality field reporting sheets for safety audits and hygiene and the lowest cost proposal. Safety Dynamics' proposal and oral presentation demonstrated a strong understanding of

(rev. 4/07/10)

## Staff Summary

Page 2 of 2

the project requirements, but they proposed a higher cost. Pyramid Health & Safety Solutions proposal lacked an overall understanding of the requirements of the Contract and proposed the highest cost.

The scope of services under the prospective contract cannot be compared with that under the existing contract due to required oversight of multiple new capital construction projects recently awarded. However, EnviroMed's proposed average hourly rate under the prospective contract reflects an overall increase of approximately 4% as compared to the existing contract. The hourly rates are fixed for the duration of the agreement. EnviroMed, the incumbent, submitted a cost proposal in the amount of \$2,306,818.38. The Engineer's estimate is \$2,773,922. Negotiations resulted in B&T and EnviroMed agreeing to a cost totaling \$2,306,818.38, which is 16% below the estimate and is considered fair and reasonable. EnviroMed is deemed to be a responsible consultant.

### **D/M/WBE INFORMATION**

The MTA DDCR has established goals of 10% MBE and 10% WBE for the referenced contract. EnviroMed does not have any completed contracts with the MTA.

### **IMPACT ON FUNDING**

Funding is available in the Operating Budget under GES-211 in the amount of \$2,306,818.38.

### **ALTERNATIVES**

There are no recommended alternatives. B&T does not have the resources needed to perform these services.

## Schedule H: Modifications to Personal Service Contracts and Miscellaneous Service Contracts

Item Number: **4** (Final)

<b>Vendor Name (&amp; Location)</b> Peter C. Merani, P.C., New York, NY Leopold, Gross & Sommers, Brooklyn, NY		<b>Contract Number</b> PSC-13-2948A PSC-13-2948B	<b>AWO/Modification</b>
<b>Description</b> Performance of Expert Professional Legal Counsel for Toll and Non-Toll Collection and Related Services		<b>Original Amount:</b>	\$100,000
<b>Contract Term (including Options, if any)</b> February 3, 2014 – February 2, 2015		<b>Prior Modifications:</b>	\$0
<b>Option(s) included in Total Amount?</b> <input type="checkbox"/> Yes <input checked="" type="checkbox"/> No		<b>Prior Budgetary Increases:</b>	\$0.00
<b>Procurement Type</b>	<input checked="" type="checkbox"/> Competitive <input type="checkbox"/> Non-competitive	<b>Current Amount:</b>	\$100,000
<b>Solicitation Type</b>	<input checked="" type="checkbox"/> RFP <input type="checkbox"/> Bid <input type="checkbox"/> Other:	<b>This Request:</b>	\$0
<b>Funding Source</b> <input checked="" type="checkbox"/> Operating <input type="checkbox"/> Capital <input type="checkbox"/> Federal <input type="checkbox"/> Other:		<b>% of This Request to Current Amount:</b>	N/A%
<b>Requesting Dept/Div &amp; Dept/Div Head Name:</b> Law and Procurement, M. Margaret Terry		<b>% of Modifications (including This Request) to Original Amount:</b>	0%

### Discussion:

B&T is seeking Board approval under the All Agency Guidelines for Procurement of Services to modify two legal retainer agreements to exercise each contract's one-year option to provide professional legal counsel services for toll and non-toll collection and related services on an as-needed basis.

In March 2013, B&T and The Port Authority of New York and New Jersey (PANYNJ) issued a joint RFP for the performance of expert professional legal counsel for toll and non-toll collection and related services on an "as needed" basis. Pursuant to the terms of the joint RFP, each Agency chose its own separate outside counsel and entered into separate retainer agreements with its chosen outside counsel.

As a result of the RFP, B&T awarded contracts to Peter C. Merani, P.C. and Leopold, Gross & Sommers, P.C. for a one-year trial period with two one-year options. If the services proved beneficial to B&T, then B&T could exercise one or both of the one-year options under the contracts. The contracts provide professional legal services in connection with the collection of unpaid tolls and administrative violation fees owed to B&T. These services generally consist of taking legal action against B&T's toll violators who have incurred substantial amounts of unpaid tolls and administrative violation fees and other amounts due. The legal services also include taking action against vendors and current and former B&T employees and others for amounts due to B&T for "Non-Toll Violation Matters". B&T is working with the other New York toll authorities on legislation that if enacted would reduce the need to use outside counsel to pursue civil actions against toll violators.

The not-to-exceed amount of \$100,000 per contract includes the cost for on-site paralegal services and all reasonable and necessary costs incurred by the firms in performing the legal services. The contingency fees are deducted from the funds collected by the firms and are in accordance with the terms of the contract and are considered fair and reasonable.

## Schedule I: Modifications to Purchase and Public Works Contracts

Item Number: 5 (Final)

<b>Vendor Name (&amp; Location)</b> Restani Construction Corp.	<b>Contract Number</b> VN-03B	<b>AWO/Modification #</b>
<b>Contract Title:</b> Toll Plaza Improvements at the Verrazano-Narrows Bridge		
<b>Contract Term (including Options, if any)</b> September 30, 2011 - June 29, 2015		
<b>Option(s) included in Total Amount?</b> <input type="checkbox"/> Yes <input checked="" type="checkbox"/> No		
<b>Procurement Type</b> <input checked="" type="checkbox"/> Competitive <input type="checkbox"/> Non-competitive		
<b>Solicitation Type</b> <input type="checkbox"/> RFP <input checked="" type="checkbox"/> Bid <input type="checkbox"/> Other:		
<b>Funding Source</b> <input type="checkbox"/> Operating <input checked="" type="checkbox"/> Capital <input type="checkbox"/> Federal <input type="checkbox"/> Other:		
<b>Requesting Dept/Div &amp; Dept/Div Head Name:</b> Engineering & Construction, Joe Keane, P.E.		
	<b>Original Amount:</b>	\$49,949,976.35
	<b>Prior Modifications:</b>	\$4,387,393.22
	<b>Prior Budgetary Increases:</b>	N/A
	<b>Current Amount:</b>	\$54,337,369.57
	<b>This Request:</b>	\$1,335,000.00
	<b>% of This Request to Current Amount:</b>	2.5%
	<b>% of Modifications (including This Request) to Original Amount:</b>	11.5%

### Discussion:

B&T is seeking the Board's approval under the All-Agency Procurement Guidelines to modify this contract with Restani Construction Corp. (Restani) to fund the Contract's provision for an incentive for early completion of the Work in the not to exceed amount of \$1,335,000.

On September 30, 2011, Contract VN-03B was awarded to Restani Construction Corp. (Restani), subsequent to a competitive bid, in the amount of \$49,949,976.35. The objective of this project is to rehabilitate the east bound toll plaza interchange and the east bound Staten Island Expressway corridor to the Verrazano-Narrows Bridge. Prior to this requested funding increase, the contract was amended for additional work and quantity adjustments (including a prior Board ratified amendment for dewatering and cleaning work associated with Sandy) increasing the current Contract amount to \$54,337,369.57.

It is imperative to complete the Work in a minimum amount of time in order to prevent traffic delays that would inconvenience the public. Therefore, in an effort to complete this project ahead of schedule, the contract terms and conditions stipulated, that the Contractor shall be eligible to receive an incentive payment of five thousand dollars (\$5,000) per day, for a maximum of 300 days, and not to exceed a total of one million five hundred thousand dollars (\$1,500,000) for substantial completion of the work prior to the Work completion date. The project was substantially complete 267 days ahead of schedule and therefore entitles the Contractor to an incentive payment of \$1,335,000. This amendment to fund this stipulated incentive is deemed to be in the best interest of the Authority and is considered fair and reasonable.

Funding for this amendment is available in the 2010-14 Capital Budget under Project VN-03.