

# Bridges and Tunnels Committee Meeting

## January 2016

---

### Committee Members

A. Cappelli, Chair  
F. Ferrer, MTA Vice Chairman  
J. Banks  
J. Kay  
M. Pally  
P. Trottenberg  
E. Watt  
N. Zuckerman

# **Bridges & Tunnels Committee Meeting**

**Monday, 1/25/2016**

**12:00 - 12:30 PM ET**

## **1. Public Comments Period**

## **2. Approval of Minutes - December 2015**

*BT Committee Minutes - December 2015 - Page 3*

## **3. Approval of Committee Work Plan**

*BT Committee Work Plan - Page 10*

## **4. Report on Operations - November 2015**

*BT Report on Operations - November 2015 - Page 17*

## **5. Safety Report - November 2015**

*BT Safety Report - November 2015 - Page 30*

## **6. E-ZPass Performance Report - November 2015**

*BT E-ZPass Performance Report - November 2015 - Page 33*

## **7. Financial Report - November 2015**

*BT Financial Report - November 2015 - Page 39*

## **8. Capital Program Project Status Report - December 2015**

*BT Capital Program Status Report - December 2015 - Page 55*

## **9. Procurements**

*BT Procurements - January 2016 - Page 70*

### **BT Non-Competitive**

*BT Non-Competitive - Page 73*

### **BT Competitive - January 2016**

*BT Competitive - Page 76*

Date of next meeting: Monday, February 22, 2016 at 11:30 am



# **Bridges and Tunnels**

---

---

## **Minutes of Committee Meeting December 2015**



**MONTHLY MEETING OF  
TRIBOROUGH BRIDGE AND TUNNEL AUTHORITY COMMITTEE**

**December 14, 2015**

**12:00 p.m.**

In attendance were the Honorable:

Allen P. Cappelli, Chairman  
Fernando Ferrer, MTA Vice Chairman  
Mitchell H. Pally  
Polly Trottenberg

Also in Attendance:  
Andrew Albert

Donald Spero, Acting President  
Angelo Cerbone, Acting Controller  
Mildred Chua, Acting Vice President and Chief Financial Officer  
James Foley, Vice President Office of Safety Programs and Initiatives  
Sharon Gallo-Kotcher, Vice President Administration  
Joseph Keane, Vice President and Chief Engineer  
Gavin Masterson, Vice President and Chief Procurement Officer  
Shawn Moore, Chief Equal Employment Opportunity Officer  
Patrick J. Parisi, Vice President Operations  
Albert Rivera, Vice President and Chief of Staff  
M. Margaret Terry, Senior Vice President and General Counsel

# **MONTHLY MEETING OF TRIBOROUGH BRIDGE AND TUNNEL AUTHORITY COMMITTEE**

**December 14, 2015**

Minutes of TBTA Committee held November 16, 2015 at 11:30 a.m. A list of those in attendance is attached.

## **Public Speakers**

There was one public speaker. Murray Bodin of Concerned Grandparents thanked TBTA staff for making significant changes to increase safety and make the roadways safer at the Henry Hudson Bridge.

## **Minutes**

Upon a motion duly made and seconded, the minutes of the Committee Meeting held on November 16, 2015 were approved.

## **Committee Work Plan**

Mr. Spero stated that there are no changes to the Committee Work Plan.

## **Report on Operations**

With regard to the Report on Operations, Mr. Parisi stated that in October 2015 there were 26.2 million crossings compared to 25.2 million crossings in October 2014; gas prices averaged \$2.29 per gallon, which is \$1.07 lower than October 2014; rainfall amounts totaled 3.4 inches over seven days in October 2015 versus rainfall amounts of 3.9 inches over nine days in October 2014; E-ZPass volume increased in October 2015 by 5.4% as compared to October 2014, while crossings using cash and other payment methods decreased by 3.4%; passenger car travel was up by 4.5%; and other vehicle travel decreased by 0.8%. Compared to the same periods last year, preliminary traffic figures for November 2015 are 5.9% higher. In addition, Thanksgiving traffic, from Wednesday through Sunday, was 8.3% higher than the same period in 2014. The Wednesday get-away travel day was up 20.0%, which may have been due to weather conditions (sleet) that day in 2014.

## **Safety Report**

With regard to the Report on Safety for October 2015, Mr. Foley referred the Committee to the graphs and charts on pages 31 and 32 of the Committee Book that represent a five year summary of employee accident reports, lost time injuries, customer collisions, injury collisions and contractor injuries. For the first 10 months of 2015, the number of employee accident reports has decreased 18.1%, the lost time injuries for the year have decreased 28.4%; the total customer collision rate has increased by 4.9%, the injury collision rate has increased by 1.1%; and the contractor lost time injury rate has increased by 27.8%.

## **E-ZPass Performance Report**

With regard to the E-ZPass Performance Report for October 2015, Mr. Spero stated that the E-ZPass market share was 86.1% or 1.0% higher than the prior October. For the first time, all TBTA facilities were above 80% on an average weekday, including the Robert F. Kennedy Bridge - Bronx Plaza, which reached 80.4% in October. A total of 19,016 E-ZPass accounts was opened in October, including 8,957 E-ZPass On-the-Go accounts, which is 47.1% of the total number of accounts opened for the month. Since the On-the-Go program began, more than 660,000 tags have been sold in TBTA toll lanes.

## **Finance Report**

Mr. Spero stated that through October, TBTA toll revenue was \$1.502 billion, which is \$22.472 million or 1.5% better than plan. Traffic is 1.4% higher against the budget and year-to-date traffic was up approximately 2.0% in October. Preliminary November results look good with toll revenue up around \$5.6 million or 3.8%

against the budget, and traffic was up over 900,000 vehicles or 4% better than plan. Year-to-year traffic was up over 4.0% in October and just under 6.0% in November. Total expenses through October were \$356.482 million, which is \$39.317 million or 9.9% below plan. Non-labor spending was \$19.002 million or 11.5% below plan. Labor expenses were \$20.315 million or 8.8% lower than plan due primarily to vacancies. Overtime was \$2.642 million or 11.9% below plan. Total support to mass transit through October was \$976.522 million, which was \$96.224 million or 10.9% better than plan.

### **2016 Budget and 2016-2019 Financial Plan Adoption – Action Item**

For 2015, Mr. Spero stated that toll revenue is projected at \$1.792 billion; non-reimbursable expenses are projected at \$492.4 million, with non-labor costs at \$241.0 million and labor costs at \$251.4 million. TBTA's support to mass transit is projected at \$1.037 billion. In 2016, Mr. Spero stated that toll revenue is projected at \$1.809 billion; non-reimbursable expenses are projected at \$509.5 million, with non-labor costs at \$244.2 million and labor costs at \$265.3 million. Debt service is projected at \$250.8 million in 2015 and \$281.5 million in 2016. TBTA's support to mass transit is projected at \$996.3 billion. Mr. Spero also mentioned some of TBTA's 2016 initiatives regarding E-ZPass, All-Electronic Tolling (AET) at the Henry Hudson Bridge, AET expansion to the Rockaways and Enterprise Asset Management (EAM). The 2015 November Plan projected 2015 total expenses at \$18.7 million lower than the July Plan and 2016 total expenses at \$4.0 million lower than the July Plan. With regard to a very favorable traffic forecast, toll revenue projection from the July Plan to the November Plan for 2015 increased by \$23.5 million and in 2016 by \$17.6 million.

Upon a motion duly made and seconded, the Committee members who were present at the Committee Meeting considered and voted in favor of the action item, by a vote of three (3) in favor and none against, although a Committee Quorum was not present.

A copy of the staff summary, documents and details of the above items are filed with the minutes of the meeting of the TBTA Committee held this day.

### **Toll Violation Enforcement – Action Item**

Ms. Terry stated that the Committee is being asked to recommend that the Board authorize TBTA to begin the legal process to revise its toll violation enforcement regulations to add procedural protections for alleged toll violators. She explained that prior to the January 2011 AET tolling pilot at the Henry Hudson Bridge, the Board had adopted a regulation imposing a \$50.00 violation fee on owners who committed toll violations by using invalid E-ZPass tags or failing to pay their Tolls by Mail invoices. This action item proposes to revise the toll violation enforcement regulations in conjunction with the regulations being adopted by the New York State Department of Motor Vehicles to suspend vehicle registrations for violators who fail to pay their tolls and violation fees or have them dismissed or transferred in response to notices of violation for five (5) or more toll violations within 18 months. Because violation enforcement procedures are most effective when they are both fair and predictable, the regulations make it clear that owners have an opportunity to dispute or transfer their tolls before being subject to the \$50.00 violation fee or, for persistent violators, having their vehicle registrations suspended by the DMV.

Commissioner Albert asked whether this action was being taken because collections against toll violators have not been that successful. Ms. Terry responded that while TBTA is breaking even at the Henry Hudson Bridge, a unique facility that has a high E-ZPass market share, a relatively low toll and no commercial traffic, the expansion of AET to the Rockaways will present significantly more commercial traffic albeit with low tolls. With this action we can ensure that commercial vehicles pay Tolls by Mail invoices at a sufficient rate to make sense for TBTA to have AET at those kinds of facilities. Commissioner Albert also asked when both Rockaways Bridges, the Marine Parkway and Cross Bay, will be AET facilities and Mr. Spero responded that this would happen sometime during the second half of 2016. Chairman Cappelli asked how easy it will be to clear up a violation. Ms. Terry responded that disputes would be handled initially by the Customer Service Center where the customer could clear it up immediately by paying it or the customer can appeal to TBTA for a

more thorough review, which will enable TBTA to cure mistakes inadvertently made by the Customer Service Center. Commissioner Cappelli asked how easy it will be to clear suspended registrations. Ms. Terry responded that TBTA will notify DMV to clear registration suspensions when the registered owner has cleared the toll violations through the Customer Service Center. They will also be able to clear the violations with the Customer Service Center via the Internet.

Upon a motion duly made and seconded, the Committee members who were present at the Committee Meeting considered and voted in favor of the action item, by a vote of three (3) in favor and none against, although a Committee Quorum was not present for this vote.

### **Capital Program Status Report**

With regard to the Capital Program Status Report for November, Mr. Keane stated that there were nine (9) commitments made with a total value of \$24.9 million. Since the report was completed, several additional major commitments were made in connection with the rehabilitation of the Marine Parkway Bridge in the amount to \$77.6 million. Including the recent commitments, TBTA has committed \$409.2 million or 99% of its 2015 annual commitment plan of \$412.9 million. In November, there was one (1) project completion for main cable and lighting work at the Bronx-Whitestone Bridge with a total value of \$12.5 million. Through the end of November, there have been 11 project completions with a total value of \$214.8 million, which represents approximately 103% of TBTA's total planned completions of \$208.5 million for 2015. There were eight (8) task level closeouts in November with a total value of \$18.5 million, bringing the total number of closeouts to 71 with a total value of \$169.8 million.

### **Procurements**

Mr. Masterson stated that there are three (3) procurements totaling \$3,030,470.79

### **Non-Competitive Procurements**

Mr. Masterson stated that there are no non-competitive procurements.

### **Competitive Procurements**

Mr. Masterson stated that there are three (3) competitive procurements totaling \$3,030,470.79 as follows:

- Two procurements for the award of personal service contracts: one is a discretionary procurement for a training program providing employee "Right-To-Know" classes for \$141,425.00 and the other is for design services for the rehabilitation of the anchorages and of the tower pedestals at the Verrazano-Narrows Bridge for \$2,849,183.29; and
- One procurement modification to a personal service contract: adding funding for commercial driver training courses for TBTA employees, in the amount of \$40,162.50.

### **Personal Service Contracts**

WSP USA Corp.	Contract No. PSC-15-2969 Provide Design and Construction Support Services for Project Nos. VN-10 and VN- 89, Rehabilitation of the Anchorages and Tower Pedestals at the Verrazano-Narrows Bridge.	\$2,849,183.29
---------------	---	----------------

Omega Laboratories, Inc.	Contract No. PSC-15-2968X	\$141,425.00
--------------------------	---------------------------	--------------

B&T is seeking a consultant to provide B&T's Right-to-Know training program, which pertains to the legal rights of its employees concerning possible exposure to hazardous substances and workplace safety, as required by New York State Labor Law and the Federal Hazard Communication Standard.

This is a discretionary procurement. The service requirements were publicly advertised and invitation letters were sent to minority, women and small business enterprises. Three firms submitted proposals: Omega Laboratories, Inc. (Omega); Executive Safety & Health Consultants, Inc. (ESHC) and Watson & Associates, LLC (Watson). The proposals were evaluated against established criteria set forth in the RFP, including the proposer's understanding of the required training program, the firm's record of performance, qualifications of the firm, proposed personnel and cost. Accordingly, the selection committee recommended that negotiations be conducted with Omega. The recommendation was based on Omega's qualifications for the specific type of services required and its thorough understanding of the training program. Omega presented a strong track record of performance as well as qualified personnel to perform the services.

Omega submitted the most competitive cost proposal in the amount totaling \$141,475, which is 40.8% lower than the user's total estimate of \$199,175. Negotiations resulted in B&T and Omega agreeing to the negotiated amount totaling \$141,425, which is fair and reasonable.

**Modifications to Personal Service Contracts and Miscellaneous Service Contracts Awarded as Contracts for Services.**

Commercial Driver Training, Inc.	Contract No. PO3000001939 Provide commercial driver training courses to prepare B&T employees for the New York State, New Jersey, Connecticut and Pennsylvania State Department of Motor Vehicles (DMV) Class "A" and Class "B"	\$40,162.50
----------------------------------	--	-------------



Commercial Driver's License (CDL) written  
and road tests.

Upon a motion duly made and seconded, the Committee approved and moved to the Board the competitive procurements.

**Ratifications**

Mr. Masterson stated that there are no ratifications.

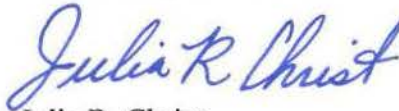
**Diversity Report Third Quarter 2015**

Ms. Moore stated that TBTA's overall 2015 workforce composition experienced significant gains between July 1, 2015 and September 30, 2015. TBTA on-boarded 49 new hires: 24% were females and 59% were Minorities. TBTA continues to address underrepresentation of females in the Officials and Administrators job category and Hispanics in the Administrative Support and Service Maintenance job categories through its talent management, strategic recruitment initiatives and ongoing outreach efforts. With regard to EEO and Title VI complaints, Ms. Moore stated that TBTA's EEO case load includes a total of 18 EEO complaints – 12 active internal complaints and six (6) active external complaints. There were no reported Title VI complaints.

**Adjournment**

There being no further business before the Committee, the meeting adjourned.

Respectfully submitted,



Julia R. Christ  
Acting Assistant Secretary



# Bridges and Tunnels

---

---

## Committee Work Plan

---

---

# BRIDGES & TUNNELS COMMITTEE WORK PLAN

---

## I. RECURRING AGENDA ITEMS

### TOPIC

Approval of Minutes  
Committee Work Plan  
Report on Operations/Safety  
  
Financial Report  
E-ZPass Performance Report  
Capital Program Project Status Report  
  
Procurements  
Action Items (if any)

### Responsibility

Committee Chair & Members  
Committee Chair & Members  
Revenue Management/  
Health & Safety  
Controller/Planning & Budget  
Revenue Management  
Engineering & Construction/  
Planning & Budget  
Procurement & Materials

## II. SPECIFIC AGENDA ITEMS

### Responsibility

### February 2016

Preliminary Review of 2015 Operating Budget Results  
2016 Adopted Budget/Financial Plan 2015-2018  
2015 B&T Operating Surplus  
Customer Environment Survey – 4<sup>th</sup> Quarter 2015  
Diversity Report – 4<sup>th</sup> Quarter 2015

Planning & Budget  
Planning & Budget  
Controller  
Operations  
EEO

### March 2016

Annual Procurement Contracts Report

Procurement & Materials/  
Finance

### April 2016

Final Review of 2015 Year-End Operating Results

Planning & Budget

### May 2016

Customer Environment Survey – 1<sup>st</sup> Quarter 2016  
Diversity Report – 1<sup>st</sup> Quarter 2016

Operations  
EEO

### June 2016

No items scheduled.

### July 2016

No items scheduled.

### August 2016

No meeting scheduled.

### September 2016

Customer Environment Survey – 2nd Quarter 2016  
2017 Preliminary Budget  
Diversity Report – 2<sup>nd</sup> Quarter 2016

Operations  
Planning & Budget  
EEO

October 2016

2017 Preliminary Budget

Planning & Budget

November 2016

Customer Environment Survey – 3rd Quarter 2016

2017 Preliminary Budget

B&T Committee Charter – Review

Operations

Planning & Budget

MTA Board

December 2016

2017 Proposed Committee Work Plan

2017 Proposed Final Budget

Diversity Report – 3<sup>rd</sup> Quarter 2016

Committee Chair & Members

Planning & Budget

EEO

January 2017

Approval of 2017 Work Plan

Committee Chair & Members

## **BRIDGES & TUNNELS COMMITTEE WORK PLAN**

### **Detailed Summary**

#### **I. RECURRING**

##### **Approval of Minutes**

Approval of the official proceedings of the Committee Meeting.

##### **Report on Operations/Safety**

Summary of B&T's major service indicators, which includes graphs and tables depicting total traffic for all facilities, manual traffic, and E-ZPass traffic volume for the most recent rolling 12 months compared to the previous year's rolling 12 months. Customer and employee safety indicators are included in various graphs and tables. The Report on Operations/Safety is reported on a two-month lag, except in the month of September, at which time it includes the statistics for June and July.

##### **E-ZPass Performance Report**

Summary presentation of the performance of E-ZPass, which includes various E-ZPass statistics, such as performance at all facilities, weekday and weekend performance by facility, interoperability statistics, and customer service statistics, in addition to graphs depicting E-ZPass market share, transactions from other agencies, tags issued, and the tag swap program. The E-ZPass Performance Report is provided on a two-month lag, except in the month of September, at which time it includes the June and July reports.

##### **Financial Report**

Summary presentation of the financial indicators for the month, which includes the Balance Sheet for the reported month, Accrual Statement of Operations for the month and year-to-date, variance analysis, traffic volume and ridership information, and headcount charts. The Financial Report is provided on a two-month lag, except in the month of September, at which time it includes the June and July reports.

##### **Capital Program Project Status Report**

Summary of the status of the current capital program, including commitments, completions, and closeouts, in addition to graphic presentations of the commitments and completions for the plan vs. actuals for the year. The Capital Program Project Status Report is provided on a one-month lag, except in the month of September, at which time it includes the July and August reports.

##### **Procurements**

List of procurement action items requiring Board approval. The non-competitive items are listed first, followed by competitive items, and then ratifications. The list will indicate items that require a 2/3 vote and a majority vote of the Board for approval. Procurements are for the current month; in the month of September, the August and September procurements are included.

Staff summary documents presented to the Board for approval for items affecting business standards and practices.

## **II. SPECIFIC AGENDA ITEMS**

### **FEBRUARY 2016**

#### Preliminary Review of 2015 Operating Budget Results

The agency will present a brief review of its 2015 Operating Budget results.

#### 2016 Adopted Budget and February Financial Plan 2016-2019

The Agency will present its revised 2016 Adopted Budget and Financial Plan which will incorporate any changes made by the Board at the December 2015 meeting and any Agency technical adjustments.

#### 2015 B&T Operating Surplus

The Committee will recommend action to the Board.

#### Customer Environment Survey – 4th Quarter 2015

Review and discuss key customer service areas: improve customer service and traffic mobility at all facilities; ensure the safety of customers traveling over the bridges and tunnels; and enhance the customer environment of bridge and tunnel facilities.

#### Diversity Report – 4<sup>th</sup> Quarter 2015

Review and discuss workforce analysis and activities as presented to the Board's Diversity Committee Quarterly meeting.

### **MARCH 2016**

#### Annual Procurement Contracts Report

This report contains information on contracts awarded during the previous fiscal year and contracts open from the previous years as required by Section 2879 of the State Public Authorities Law.

### **APRIL 2016**

#### Final Review of 2015 Year-End Operating Results

The customary review of prior year's budget results and their implications for current and future budget performance will be presented to the Committee. Each Agency will present for inclusion in the Agenda materials, and be prepared to answer questions, on a review of its experience. The MTA Budget Division will prepare an overall review also for inclusion in the materials that draws MTA-wide conclusions.

### **MAY 2016**

#### Customer Environment Survey – 1st Quarter 2016

Review and discuss key customer service areas: improve customer service and traffic mobility at all facilities; ensure the safety of customers traveling over the bridges and tunnels; and enhance the customer environment of bridge and tunnel facilities.

## **MAY 2016 (CONT'D)**

### Diversity Report – 1<sup>st</sup> Quarter 2016

Review and discuss workforce analysis and activities as presented to the Board's Diversity Committee Quarterly meeting.

## **JUNE 2016**

No items scheduled.

## **JULY 2016**

No items scheduled.

## **AUGUST 2016**

No meeting scheduled.

## **SEPTEMBER 2016**

### Customer Environment Survey – 2nd Quarter 2016

Review and discuss key customer service areas: improve customer service and traffic mobility at all facilities; ensure the safety of customers traveling over the bridges and tunnels; and enhance the customer environment of bridge and tunnel facilities.

### 2017 Preliminary Budget

Agency will present highlights of the Preliminary Budget to the Committee. Public comment will be accepted on the 2017 Preliminary Budget.

### Diversity Report – 2<sup>nd</sup> Quarter 2016

Review and discuss workforce analysis and activities as presented to the Board's Diversity Committee Quarterly meeting.

## **OCTOBER 2016**

### 2017 Preliminary Budget

Public comment will be accepted on the 2016 Preliminary Budget.

## **NOVEMBER 2016**

### Customer Environment Survey – 3rd Quarter 2016

Review and discuss key customer service areas: improve customer service and traffic mobility at all facilities; ensure the safety of customers traveling over the bridges and tunnels; and enhance the customer environment of bridge and tunnel facilities.

### 2017 Preliminary Budget

Public comment will be accepted on the 2016 Preliminary Budget.

### B&T Committee Charter - Review

Review and assess the adequacy of the Charter annually.

## **DECEMBER 2016**

### 2017 Proposed Committee Work Plan

The Committee Chair will present a draft Bridges and Tunnels Committee Work Plan for 2017 that will address initiatives to be reported throughout the year.

### 2017 Proposed Final Budget

The Committee will recommend action to the Board.

### Diversity Report – 3<sup>rd</sup> Quarter 2016

Review and discuss workforce analysis and activities as presented to the Board's Diversity Committee Quarterly meeting.

## **JANUARY 2017**

### Approval of Work Plan for 2017

The committee will have already received a draft work plan for 2017 at the December 2016 meeting. The committee will be requested to approve the amended work plan for the year.





# **Bridges and Tunnels**

---

---

## **Report on Operations November 2015**

---

---



## **MTA Bridges and Tunnels November 2015 Traffic Trends**

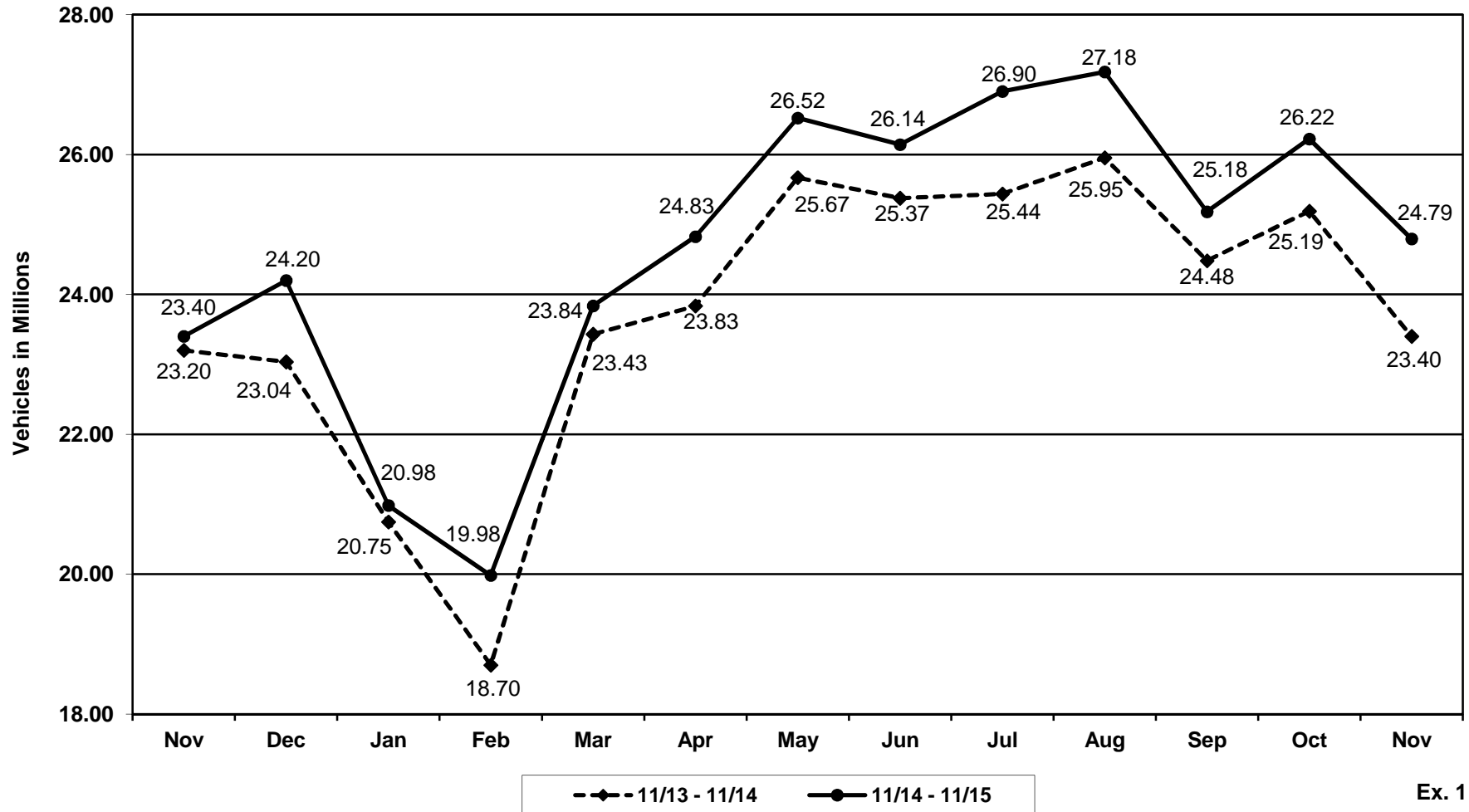
### **Summary**

Traffic was higher on a year-to-year basis, with 24.8 million crossings this month vs. 23.4 million crossings in November 2014 (Exhibit 1).

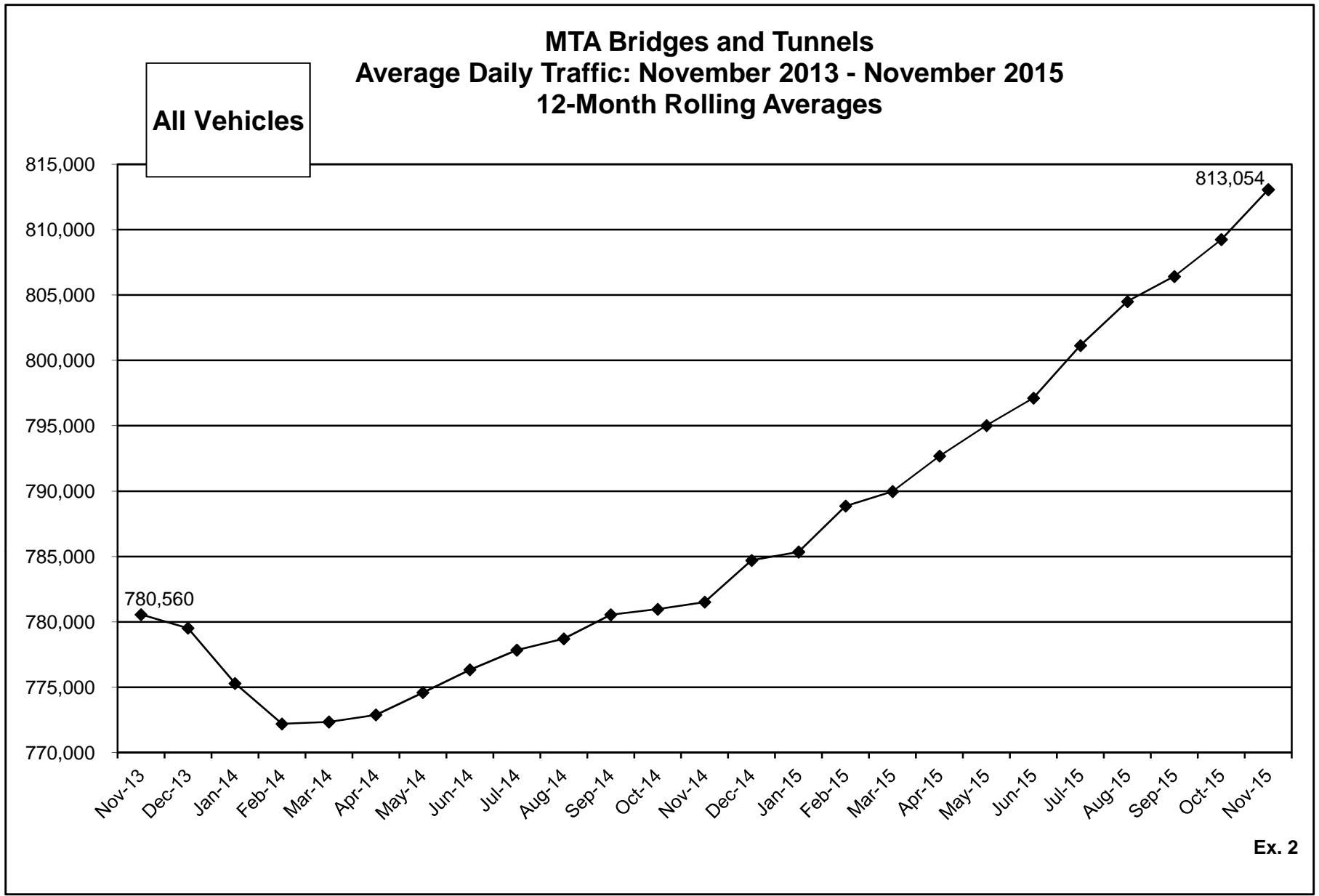
Rainfall totaled 1.7 inches over 5 days this year compared to 3.9 inches over 8 days in November 2014. Last November also saw a snow storm with accumulations of approximately half an inch. Gas prices averaged \$2.25 per gallon this November, which was \$0.78 less than last year at this time.

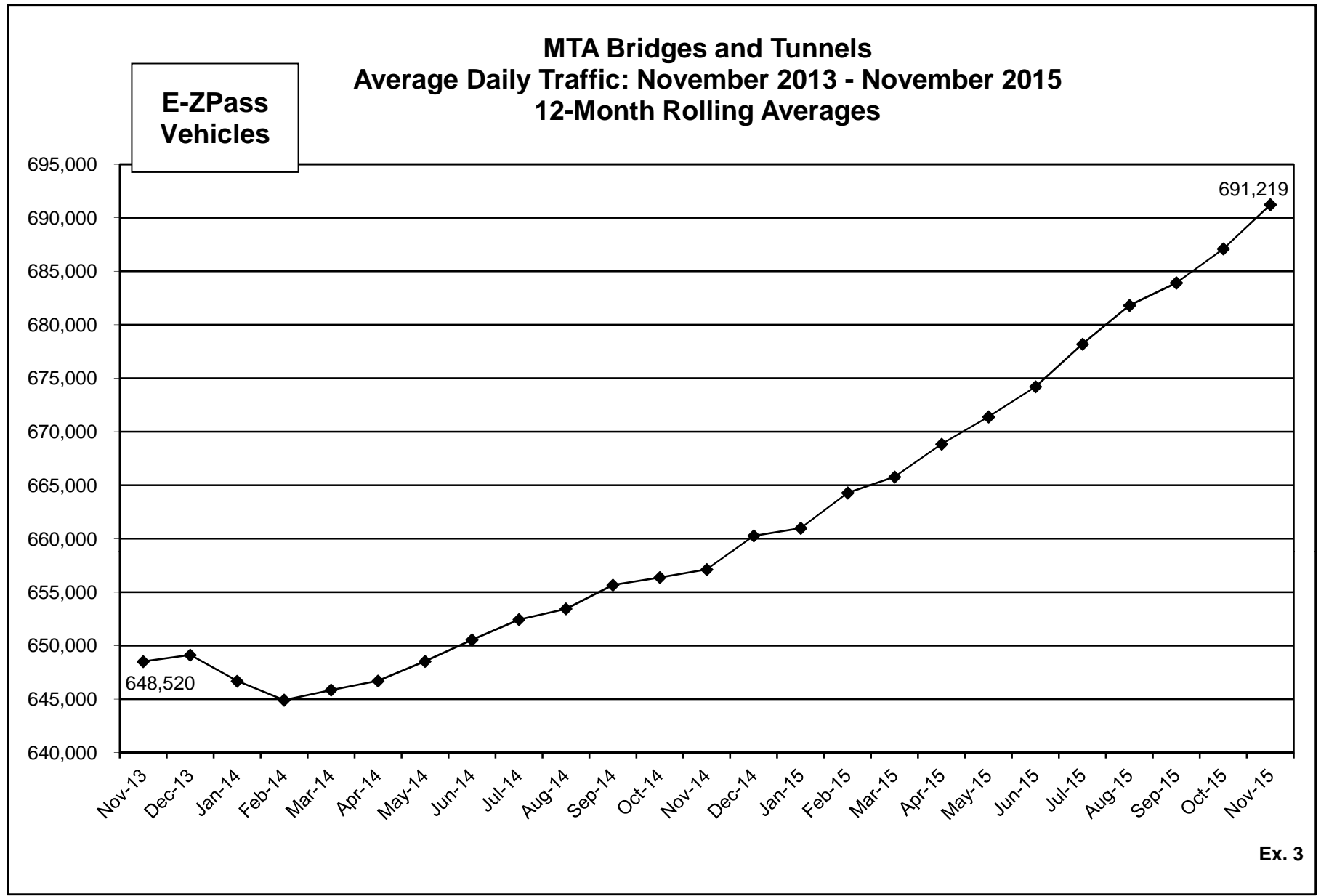
E-ZPass volume increased in November by 7.6% compared to the same month in 2014, while crossings using cash and other payment methods declined 3.2% (Exhibit 7). Passenger car travel increased 6.1% and other vehicle travel increased 4.2% on a year-to-year basis for the month (Exhibit 8).

# MTA Bridges and Tunnels Traffic Volume - All Facilities Two Years Ending November 2015



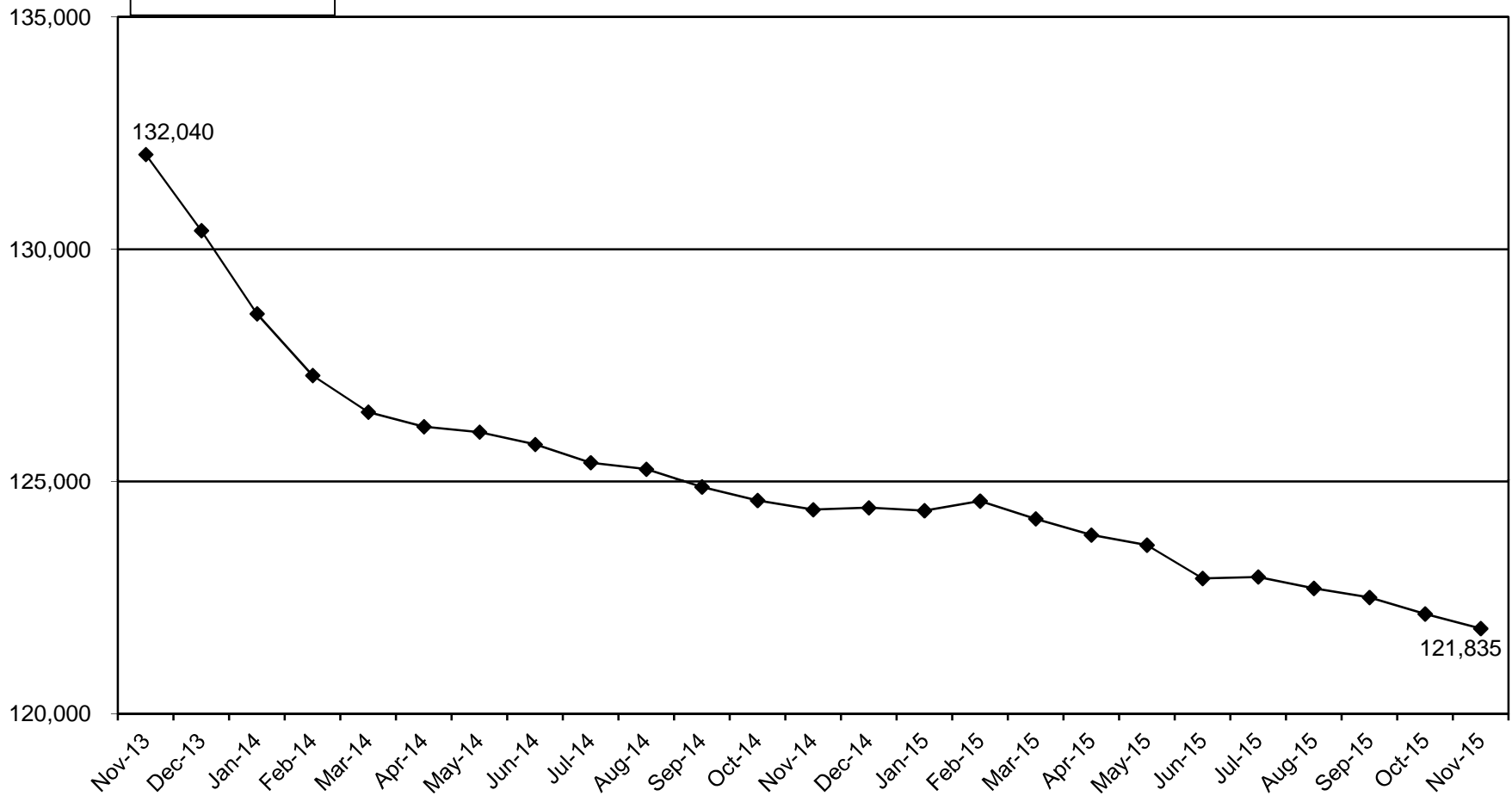
Ex. 1





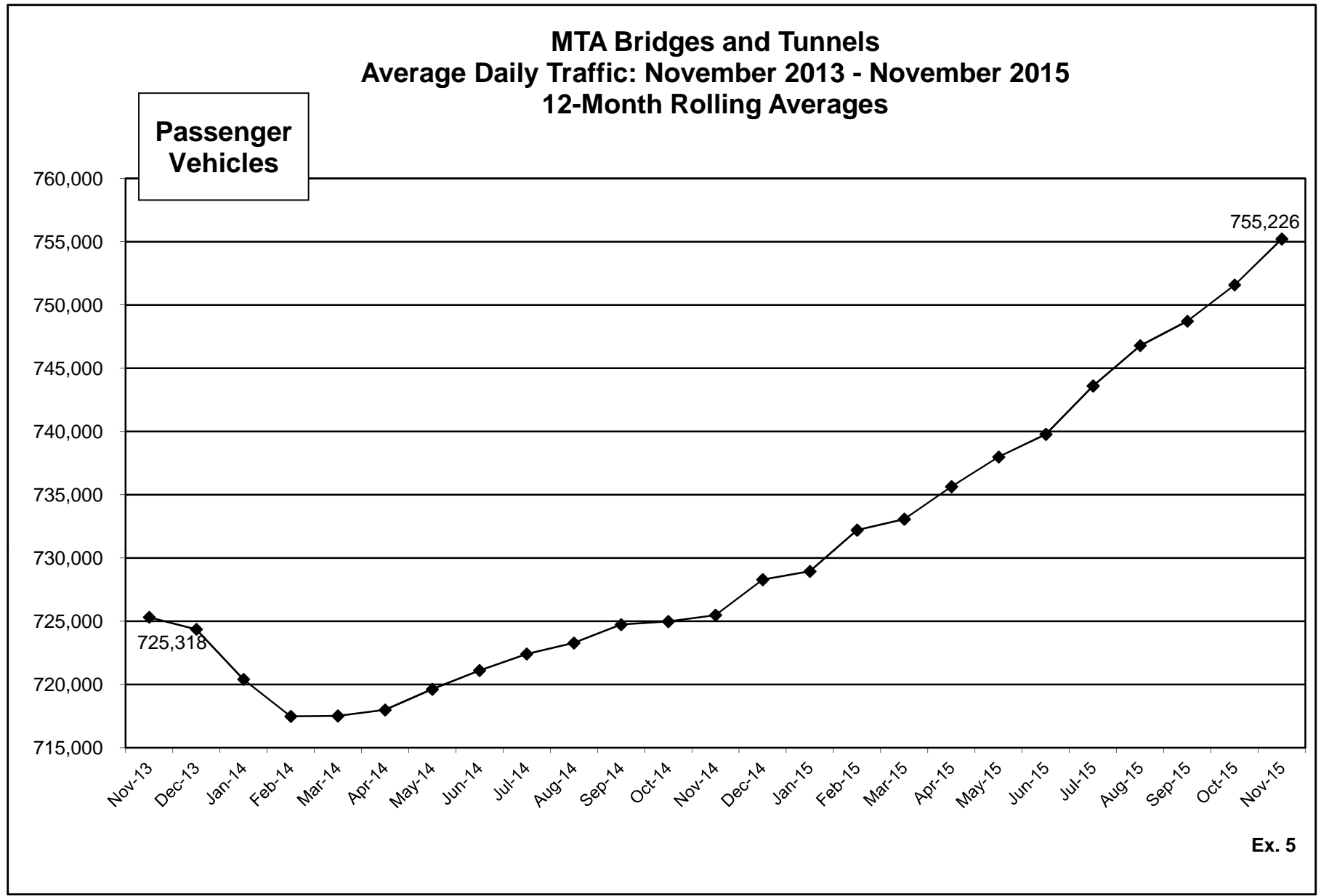
# MTA Bridges and Tunnels Average Daily Traffic: November 2013 - November 2015 12-Month Rolling Averages

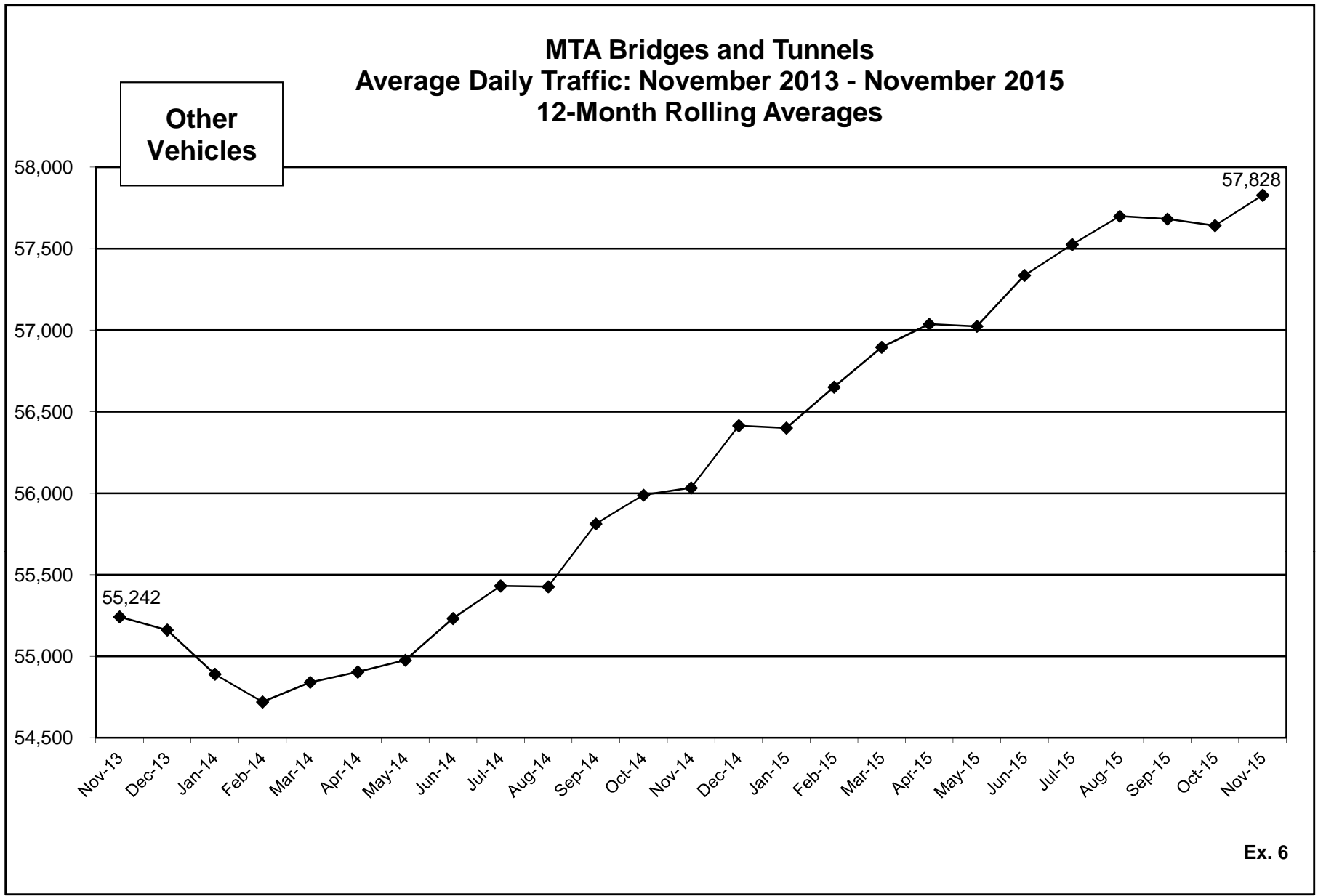
Cash  
Vehicles\*



\*Includes token, ticket and Tolls by Mail transactions.

Ex. 4







**MTA Bridges and Tunnels**  
**Percent Change in Average Daily Traffic by Toll Media**

Corridor	Toll Media	Nov <sup>(1)</sup>	3 Months <sup>(2)</sup> (Sep -Nov)	6 Months <sup>(3)</sup> (Jun-Nov)	9 Months <sup>(4)</sup> (Mar-Nov)	12 Months <sup>(5)</sup> (Dec-Nov)
All Facilities	Total Vehicles	6.0%	4.3%	4.4%	4.0%	4.0%
	E-ZPass	7.6%	5.6%	5.8%	5.3%	5.2%
	Cash <sup>(6)</sup>	-3.2%	-2.8%	-2.7%	-2.8%	-2.1%
RFK Bridge-Bronx Plaza Bronx-Whitestone Bridge Throgs Neck Bridge	Total Vehicles	7.3%	6.1%	5.8%	5.3%	5.3%
	E-ZPass	9.4%	7.7%	7.5%	7.0%	6.8%
	Cash <sup>(6)</sup>	-1.5%	-0.6%	-0.9%	-1.2%	-0.6%
RFK Bridge-Manhattan Plaza Queens Midtown Tunnel Hugh L. Carey Tunnel	Total Vehicles	4.3%	1.7%	2.4%	2.4%	2.8%
	E-ZPass	5.9%	3.1%	3.7%	3.7%	4.0%
	Cash <sup>(6)</sup>	-6.9%	-7.5%	-6.7%	-6.0%	-4.5%
Verrazano-Narrows Bridge	Total Vehicles	5.3%	3.9%	3.8%	3.2%	3.3%
	E-ZPass	7.0%	5.3%	5.2%	4.5%	4.5%
	Cash <sup>(6)</sup>	-4.8%	-4.1%	-4.2%	-4.3%	-3.6%
Henry Hudson Bridge	Total Vehicles	6.8%	4.3%	5.1%	4.2%	4.0%
	E-ZPass	6.6%	4.2%	4.9%	4.1%	3.9%
	Tolls By Mail	10.6%	5.2%	6.7%	5.4%	4.2%
Marine Parkway Bridge Cross Bay Bridge	Total Vehicles	6.8%	5.9%	6.3%	5.3%	4.9%
	E-ZPass	8.6%	7.4%	7.8%	6.7%	6.1%
	Cash <sup>(6)</sup>	-5.5%	-3.4%	-2.1%	-2.9%	-2.2%

(1) November 2015 vs. November 2014.

(2) September 2015 to November 2015 vs. September 2014 to November 2014.

(3) June 2014 to November 2015 vs. June 2013 to November 2014.

(4) March 2014 to November 2015 vs. March 2013 to November 2014.

(5) December 2014 to November 2015 vs. December 2013 to November 2014.

(6) Includes tokens and tickets.

**Ex. 7**

**MTA Bridges and Tunnels**  
**Percent Change in Average Daily Traffic by Vehicle Type**

Corridor	Vehicle Type	Nov <sup>(1)</sup>	3 Months <sup>(2)</sup> (Sep-Nov)	6 Months <sup>(3)</sup> (Jun-Nov)	9 Months <sup>(4)</sup> (Mar-Nov)	12 Months <sup>(5)</sup> (Dec-Nov)
All Facilities	Total Vehicles	6.0%	4.3%	4.4%	4.0%	4.0%
	Passenger	6.1%	4.5%	4.5%	4.1%	4.1%
	Other	4.2%	0.9%	2.8%	2.7%	3.2%
RFK Bridge-Bronx Plaza Bronx-Whitestone Bridge Throgs Neck Bridge	Total Vehicles	7.3%	6.1%	5.8%	5.3%	5.3%
	Passenger	7.4%	6.4%	5.9%	5.4%	5.3%
	Other	5.9%	3.2%	4.9%	4.4%	4.9%
RFK Bridge-Manhattan Plaza Queens Midtown Tunnel Hugh L. Carey Tunnel	Total Vehicles	4.3%	1.7%	2.4%	2.4%	2.8%
	Passenger	4.4%	2.0%	2.5%	2.5%	2.9%
	Other	2.7%	-1.7%	0.1%	1.0%	1.6%
Verrazano-Narrows Bridge	Total Vehicles	5.3%	3.9%	3.8%	3.2%	3.3%
	Passenger	5.5%	4.3%	3.9%	3.3%	3.4%
	Other	1.5%	-0.9%	1.4%	1.0%	1.3%
Henry Hudson Bridge	Total Vehicles	6.8%	4.3%	5.1%	4.2%	4.0%
	Passenger	6.6%	4.1%	4.9%	4.0%	3.8%
	Other	26.1%	16.8%	21.8%	18.6%	17.7%
Marine Parkway Bridge Cross Bay Bridge	Total Vehicles	6.8%	5.9%	6.3%	5.3%	4.9%
	Passenger	7.2%	6.7%	6.9%	5.8%	5.3%
	Other	-0.3%	-5.8%	-3.9%	-3.3%	-1.5%

(1) November 2015 vs. November 2014.

(2) September 2015 to November 2015 vs. September 2014 to November 2014.

(3) June 2014 to November 2015 vs. June 2013 to November 2014.

(4) March 2014 to November 2015 vs. March 2013 to November 2014.

(5) December 2014 to November 2015 vs. December 2013 to November 2014.

**Ex. 8**

## Supplemental Data Page for the Report on Operations

Traffic & Average Gas Price <sup>1</sup>			Weather <sup>2</sup>			
<u>Month</u>	<u>Traffic</u>	<u>Gas</u>	<u>Average Temperature</u>	<u>Rain Inches</u>	<u>Snow Inches</u>	<u>Precipitation Days</u>
Nov-13	23,200,297	\$3.50	46	2.7	0.2	11
Dec-13	23,035,975	\$3.61	38	4.5	7.6	12
Jan-14	20,747,317	\$3.59	29	2.4	16.7	14
Feb-14	18,701,703	\$3.61	32	4.9	27.8	11
Mar-14	23,431,567	\$3.70	37	3.7	0.4	7
Apr-14	23,834,773	\$3.77	62	8.2	-	9
May-14	25,668,919	\$3.84	64	4.7	-	13
Jun-14	25,374,933	\$3.85	73	3.7	-	7
Jul-14	25,435,425	\$3.84	77	4.0	-	9
Aug-14	25,951,945	\$3.67	76	3.5	-	8
Sep-14	24,481,160	\$3.56	71	1.2	-	6
Oct-14	25,189,827	\$3.36	61	3.9	-	9
Nov-14	23,400,720	\$3.03	51	3.9	0.4	8
Dec-14	24,198,616	\$2.78	41	6.1	1.3	16
Jan-15	20,983,289	\$2.30	30	4.8	15.1	11
Feb-15	19,983,679	\$2.33	24	2.0	15.2	8
Mar-15 <sup>3</sup>	23,836,645	\$2.48	38	4.5	17.3	14
Apr-15	24,825,057	\$2.52	54	1.8	-	8
May-15	26,520,622	\$2.78	67	1.6	-	6
Jun-15	26,140,659	\$2.86	71	4.8	-	12
Jul-15	26,900,933	\$2.85	79	3.5	-	8
Aug-15	27,179,957	\$2.68	79	1.9	-	4
<b>Sep-15</b>	<b>25,180,662</b>	<b>\$2.44</b>	<b>74</b>	<b>2.5</b>	<b>-</b>	<b>6</b>
<b>Oct-15</b>	<b>26,221,062</b>	<b>\$2.29</b>	<b>59</b>	<b>3.4</b>	<b>-</b>	<b>7</b>
<b>Nov-15</b>	<b>24,793,552</b>	<b>\$2.25</b>	<b>54</b>	<b>1.7</b>	<b>-</b>	<b>5</b>

Note: Bold numbers are preliminary.

**TABLE 2 - Year-over-Year Differences**

Traffic & Gas Monthly Inc/(Dec)			Weather Monthly Inc/(Dec)			
<u>Month</u>	<u>Traffic</u>	<u>Gas</u>	<u>Average Temperature</u>	<u>Rain Inches</u>	<u>Snow Inches</u>	<u>Precipitation Days</u>
<b>2014 vs. 2013</b>						
November	200,423	(\$0.47)	5	1.2	0	(3)
December	1,162,641	(\$0.83)	3	1.7	(6)	4
<b>2015 vs. 2014</b>						
January	235,972	(\$1.29)	1	2.4	(2)	(3)
February	1,281,976	(\$1.28)	(8)	(2.9)	(13)	(3)
March	405,078	(\$1.22)	1	0.8	17	7
April	990,284	(\$1.25)	(8)	(6.4)	-	(1)
May	851,703	(\$1.06)	3	(3.1)	-	(7)
June	765,726	(\$0.99)	(2)	1.1	-	5
July	1,465,508	(\$0.99)	2	(0.5)	-	(1)
August	1,228,012	(\$0.99)	3	(1.6)	-	(4)
September	699,502	(\$1.12)	3	1.3	-	0
October	1,031,235	(\$1.07)	(2)	(0.5)	-	(2)
November	1,392,832	(\$0.78)	3	(2.2)	(0)	(3)

1. Average gasoline (all types) price per gallon data are from the U.S. Bureau of Labor Statistics, NY-NJ-CT-PA area.

2. Local weather data are from the National Weather Service, LaGuardia Airport Station.

3. Toll Increase, March 22, 2015

## **Supplemental Data Page for Exhibits 2 through 6**

### **Average Daily Traffic: 12-Month Rolling Averages**

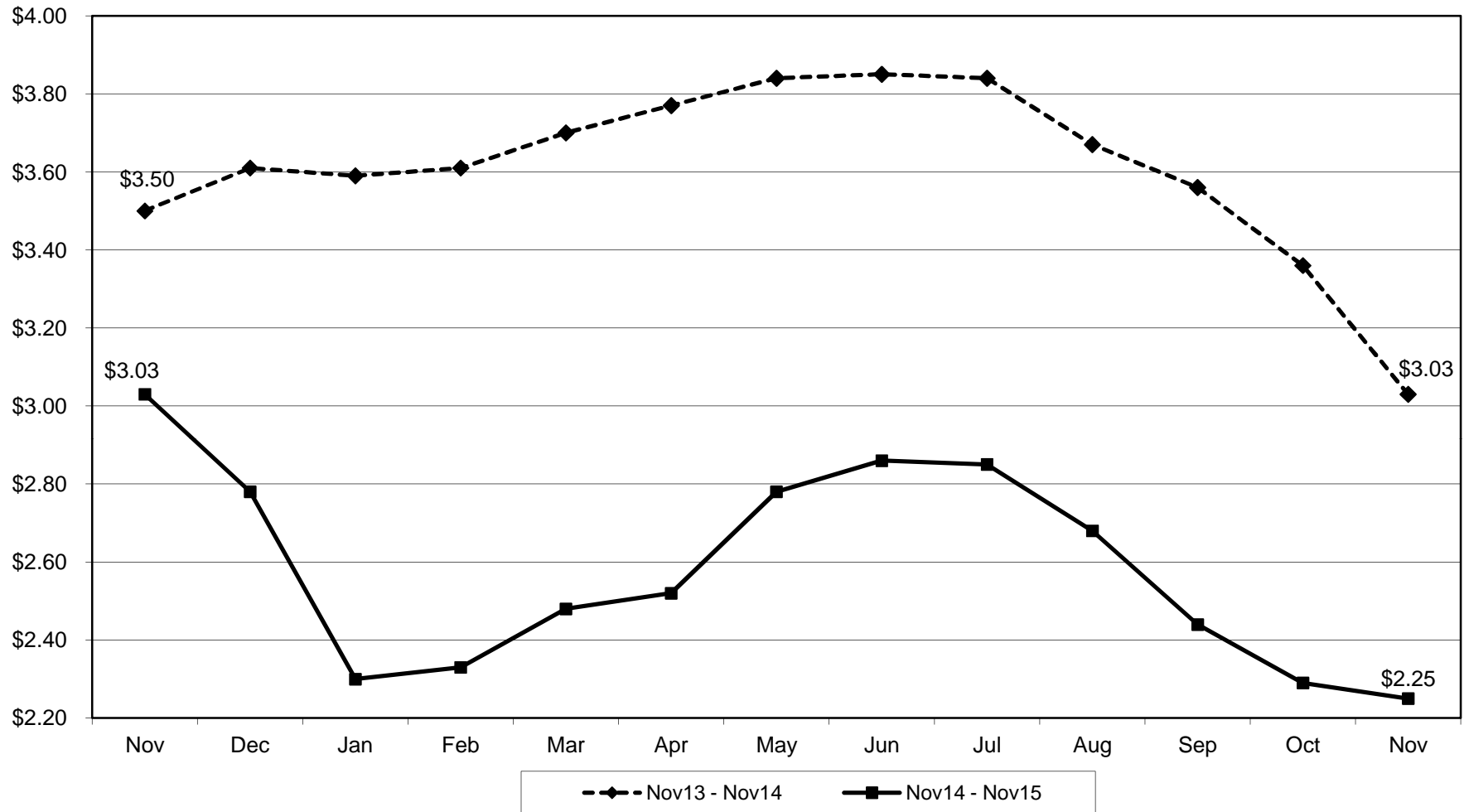
<b><u>Month</u></b>	<b><u>All Vehicles<sup>1</sup></u></b>	<b><u>E-ZPass</u></b>	<b><u>Cash<sup>2</sup></u></b>	<b><u>Passenger</u></b>	<b><u>Other</u></b>
Oct-13	774,515	641,086	133,429	719,026	55,489
Nov-13	780,560	648,520	132,040	725,318	55,242
Dec-13	779,527	649,128	130,400	724,366	55,161
Jan-14	775,300	646,691	128,610	720,410	54,890
Feb-14	772,204	644,921	127,282	717,484	54,720
Mar-14	772,356	645,861	126,495	717,516	54,840
Apr-14	772,893	646,713	126,181	717,989	54,904
May-14	774,602	648,539	126,063	719,626	54,976
Jun-14	776,344	650,545	125,799	721,112	55,232
Jul-14	777,848	652,443	125,405	722,417	55,432
Aug-14	778,712	653,447	125,265	723,285	55,427
Sep-14	780,551	655,669	124,882	724,739	55,812
Oct-14	780,969	656,378	124,591	724,981	55,989
Nov-14	781,519	657,125	124,394	725,485	56,033
Dec-14	784,704	660,268	124,436	728,289	56,415
Jan-15	785,350	660,977	124,373	728,950	56,400
Feb-15	788,863	664,283	124,580	732,211	56,651
Mar-15	789,972	665,777	124,196	733,077	56,896
Apr-15	792,686	668,837	123,848	735,648	57,037
May-15	795,019	671,387	123,632	737,995	57,024
Jun-15	797,117	674,203	122,914	739,780	57,336
Jul-15	801,132	678,186	122,946	743,606	57,526
Aug-15	804,496	681,797	122,700	746,797	57,699
<b>Sep-15</b>	<b>806,413</b>	<b>683,909</b>	<b>122,504</b>	<b>748,731</b>	<b>57,682</b>
<b>Oct-15</b>	<b>809,238</b>	<b>687,087</b>	<b>122,151</b>	<b>751,597</b>	<b>57,641</b>
<b>Nov-15</b>	<b>813,054</b>	<b>691,219</b>	<b>121,835</b>	<b>755,226</b>	<b>57,828</b>

*Note: Bold numbers are preliminary.*

1. Numbers may not add due to rounding.

2. Cash transactions include: tokens, tickets and beginning November 11, 2012, Tolls by Mail at the Henry Hudson Bridge

**Supplemental Graph  
Gas Prices in the NY-NJ-CT-PA Area  
November 2013 - November 2015**





# Bridges and Tunnels

---

---

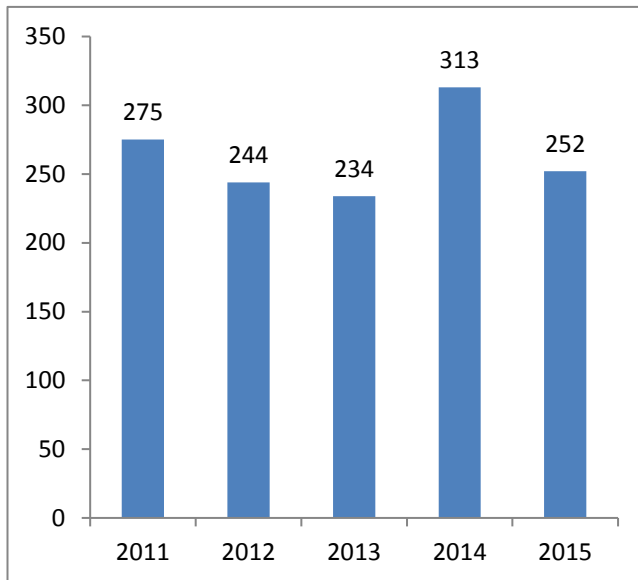
## **Safety Report November 2015**





## Bridges and Tunnels

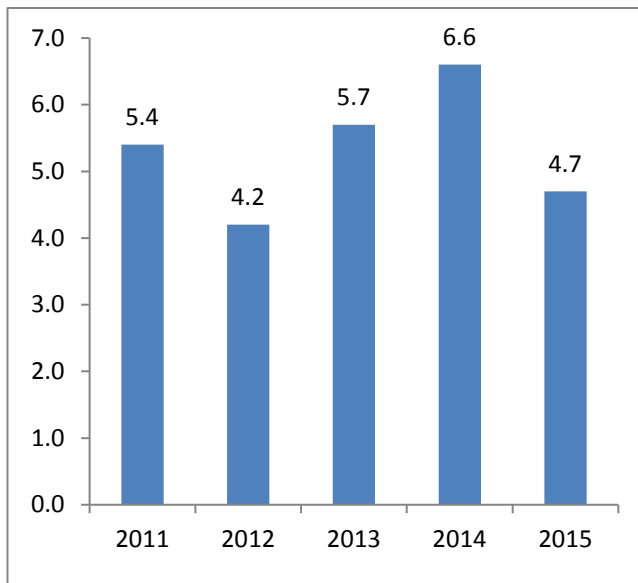
### 5 Yr Summary of Employee Accident Reports & Injuries thru November



Total Employee Accident Reports (C-2's)

Year	Total
2011	275
2012	244
2013	234
2014	313
2015	252

% change from last year: -19.5%  
5 year Average 264



Employee Lost Time Injuries

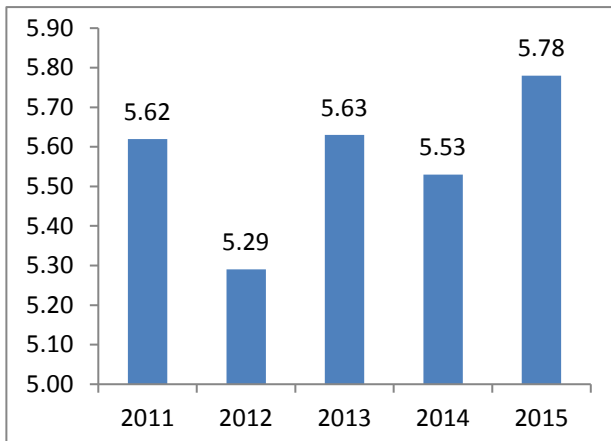
Year	Lost Time Injuries	Frequency Rate (Per 200,000 Hours)
2011	80	5.4
2012	63	4.2
2013	78	5.7
2014	92	6.6
2015	64	4.7

% change from last year: -28.8%  
5 year Average 5.3



## Bridges and Tunnels

### 5 Yr Summary of Customer Collisions & Customer/Contractor Injuries thru November

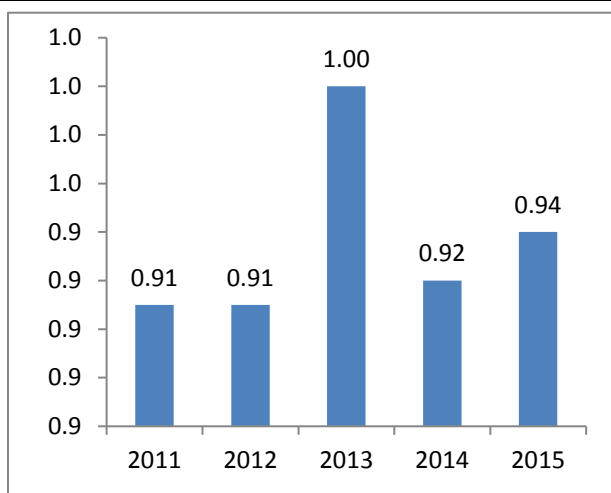


#### Customer Collisions

Year	Total Collisions	Rate/M Vehicles
2011	1477	5.62
2012	1388	5.29
2013	1490	5.63
2014	1467	5.53
2015	1593	5.78

% change from last year: 4.5%

5 year Average 5.57

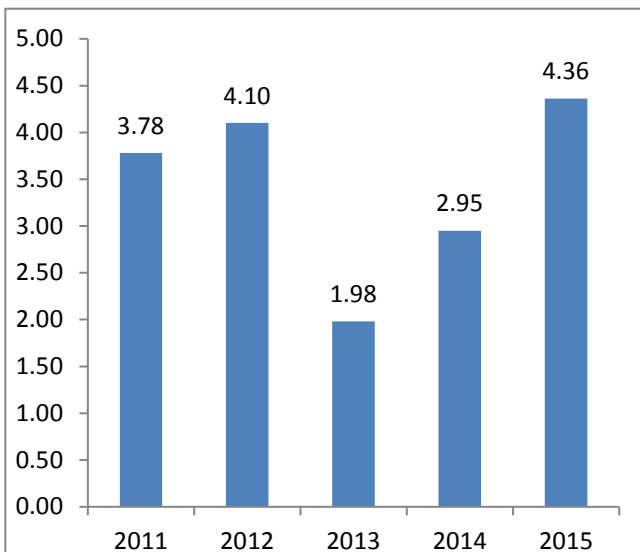


#### Injury Collisions

Year	Injury Collisions	Injury Rate/M Vehicles
2011	239	0.91
2012	240	0.91
2013	264	1.00
2014	245	0.92
2015	260	0.94

% change from last year: 2.2%

5 year Average 0.94



#### Contractor Injuries

Year	Lost Time Injuries	Frequency Rate (Per 200,000 Hours)
2011	9	3.78
2012	17	4.10
2013	7	1.98
2014	10	2.95
2015	24	4.36

% change from last year: 47.8%

5 year Average 3.43





# **Bridges and Tunnels**

---

---

## **E-ZPass Performance Report November 2015**



**MTA Bridges and Tunnels**  
**E-ZPASS Performance Report**  
**November 2015**  
Preliminary data subject to final audit

<b>E-ZPass Performance at All B&amp;T Facilities</b>			
	November 2015	Year to Date	November 2014
Total E-ZPass Traffic <sup>1</sup>	21,292,312	231,854,257	19,784,382
E-ZPass Market Share: Total	85.9%	85.1%	84.5%
Cars	85.4%	84.5%	84.0%
Trucks	92.8%	92.6%	92.3%

<b>Weekday E-ZPass Performance by Facility<sup>2</sup></b>			
Facility	November Average E-Zpass Weekday Traffic and Market Share		
	2015 Average Traffic	2015 Market Share	2014 Market Share
Bronx-Whitestone Bridge	98,976	82.9%	81.4%
Cross Bay Veterans Memorial Bridge	19,922	88.5%	86.9%
Henry Hudson Bridge	65,303	94.4%	94.7%
Hugh L. Carey Tunnel	49,221	91.4%	90.4%
Marine Parkway-Gil Hodges Memorial Bridge	19,856	90.5%	89.2%
Queens Midtown Tunnel	75,604	90.8%	89.8%
Robert F. Kennedy Bridge - Bronx Plaza	66,214	80.3%	78.3%
Robert F. Kennedy Bridge - Manhattan Plaza	83,195	87.7%	86.3%
Throgs Neck Bridge	101,225	86.1%	85.0%
Verrazano-Narrows Bridge <sup>1</sup>	<u>166,514</u>	<u>88.5%</u>	<u>87.4%</u>
All Facilities <sup>1</sup>	746,030	87.5%	86.3%

Notes:

1. At the Verrazano-Narrows Bridge (VNB), tolls are only collected in the westbound direction. These transactions are doubled to provide traffic statistics that are consistent with B&T's other facilities.
2. Weekday E-ZPass traffic and market share figures average data for all weekdays except for holidays

**MTA Bridges and Tunnels**  
**E-ZPASS Performance Report**  
**November 2015**  
Preliminary data subject to final audit

<b>Weekday Peak Hour E-ZPass Performance by Facility<sup>3</sup></b>				
Facility	November E-ZPass Market Share			
	2015 AM Peak	2014 AM Peak	2015 PM Peak	2014 PM Peak
Bronx-Whitestone Bridge	87.7%	86.5%	83.7%	82.6%
Cross Bay Veterans Memorial Bridge	91.6%	90.3%	89.1%	87.7%
Henry Hudson Bridge	96.5%	96.1%	94.6%	95.5%
Hugh L. Carey Tunnel	94.5%	93.3%	91.1%	90.7%
Marine Parkway-Gil Hodges Memorial Bridge	92.8%	91.7%	90.3%	89.2%
Queens Midtown Tunnel	92.8%	91.3%	90.9%	89.6%
Robert F. Kennedy Bridge - Bronx Plaza	85.3%	83.7%	81.4%	79.3%
Robert F. Kennedy Bridge - Manhattan Plaza	90.2%	89.0%	87.5%	86.9%
Throgs Neck Bridge	90.6%	89.5%	86.5%	85.7%
Verrazano-Narrows Bridge <sup>4</sup>	N/A	N/A	91.1%	90.1%
All Facilities	90.7%	89.6%	88.2%	87.4%

<b>Weekend E-ZPass Performance by Facility</b>			
Facility	November Average E-ZPass Weekend Traffic and Market Share		
	2015 Avg. Traffic	2015 Market Share	2014 Market Share
Bronx-Whitestone Bridge	90,512	76.7%	75.2%
Cross Bay Veterans Memorial Bridge	14,941	84.4%	83.2%
Henry Hudson Bridge	59,102	92.2%	92.5%
Hugh L. Carey Tunnel	37,207	87.7%	86.3%
Marine Parkway-Gil Hodges Memorial Bridge	14,453	87.4%	86.3%
Queens Midtown Tunnel	66,550	87.4%	85.7%
Robert F. Kennedy Bridge - Bronx Plaza	56,818	73.6%	71.4%
Robert F. Kennedy Bridge - Manhattan Plaza	69,506	83.3%	81.5%
Throgs Neck Bridge	93,350	81.2%	80.1%
Verrazano-Narrows Bridge <sup>1</sup>	<u>139,098</u>	83.0%	81.6%
All Facilities <sup>1</sup>	641,537	82.4%	81.1%

Notes:

3. Peak E-ZPass market shares report the market share figures for all vehicles during the highest overall traffic hour in the AM and PM periods at each facility.
4. AM peak figures are not compiled for the eastbound direction because tolls are collected in westbound lanes only.

**MTA Bridges and Tunnels**  
**E-ZPASS Performance Report**  
**November 2015**  
Preliminary data subject to final audit

**E-ZPass Interoperability Statistics**

<b>B&amp;T E-ZPass Transactions From Other Agencies <sup>5</sup></b>			
Customer's E-ZPass Agency	November 2015 Total B&T E-ZPass Transactions	November 2015 Percentage of B&T Total Transactions	November 2014 Percentage of B&T Total Transactions
New York State Thruway Authority <sup>6</sup>	1,834,792	8.32%	7.95%
Port Authority of NY and NJ	1,180,500	5.35%	5.28%
New Jersey Toll Agencies <sup>7</sup>	1,163,659	5.27%	5.47%
Massachusetts Turnpike Authority <sup>8</sup>	146,276	0.66%	0.65%
Pennsylvania Turnpike Commission	98,967	0.45%	0.40%
Maryland Transportation Authority	23,490	0.11%	0.18%
Virginia Department of Transportation <sup>9</sup>	35,803	0.16%	0.13%
New Hampshire Department of Transportation	16,992	0.08%	0.07%
Delaware Department of Transportation	17,446	0.08%	0.07%
Other <sup>10</sup>	<u>51,619</u>	<u>0.23%</u>	<u>0.21%</u>
Total	4,569,544	20.71%	20.40%

<b>Other Agency B&amp;T E-ZPass Transactions</b>			
Agency Used By B&T Customers	November 2015	YTD 2015	November 2014
New York State Thruway Authority <sup>6</sup>	2,870,107	30,601,102	2,568,568
Port Authority of NY and NJ	3,543,539	36,965,717	3,180,298
New Jersey Toll Agencies <sup>7</sup>	5,960,677	64,094,254	5,291,992
New York State Bridge Authority	280,388	2,937,834	242,978
Massachusetts Turnpike Authority <sup>8</sup>	623,335	6,551,615	536,112
Pennsylvania Turnpike Commission	275,824	2,957,157	244,981
Maryland Transportation Authority	209,076	3,992,421	291,362
Virginia Department of Transportation <sup>9</sup>	182,292	2,179,091	152,561
New Hampshire Department of Transportation	105,958	1,370,223	86,569
Delaware Department of Transportation	244,515	2,974,037	210,931
Other <sup>10</sup>	<u>389,757</u>	<u>4,454,216</u>	<u>305,276</u>
Total	14,685,468	159,077,667	13,111,628

Notes:

5. "B&T E-ZPass Transactions From Other Agencies" excludes an estimate of VNB travel in the untolled eastbound direction in order to maintain comparability with the figures reported in "Others Agency B&T E-ZPass Transactions."
6. Includes Buffalo and Fort Erie Public Bridge Authority.
7. Includes South Jersey Transportation Authority, New Jersey Turnpike Authority, Garden State Parkway, Delaware River Port Authority, Delaware River and Bay Authority, Delaware River Joint Toll Bridge Commission and the Burlington County Bridge Commission.
8. Includes Massachusetts Port Authority.
9. Includes Dulles Greenway, Dulles Toll Road, Powhite Parkway Extension, RMA Expressway System, George P. Coleman Bridge, Chesapeake Bay Bridge and Tunnel Commission, and Chesapeake Expressway.
10. Other agencies include Illinois State Toll Highway Authority, Maine Turnpike Authority, West Virginia Parkway Authority, Indiana Toll Road Concession Company, and Rhode Island Bridge and Tunnel Authority, Ohio Turnpike Commission, North Carolina Turnpike Authority, Niagara Falls Bridge Commission and Chicago Skyway Concession Company.

**E-ZPASS Performance Report**  
**November 2015**  
Preliminary data subject to final audit

**E-ZPass Customer Service Statistics**

<b>MTA Bridges and Tunnels Customers</b>				
	November 2015	YTD 2015	YTD 2014	
Accounts Opened:				
Internet	6,241	90,029	88,615	
Walk-In	2,223	29,826	23,978	
Mail	423	3,188	2,972	
On-The-Go	<u>9,107</u>	<u>112,483</u>	<u>100,515</u>	
Total Accounts Opened	17,994	235,526	216,080	
Total Active Accounts		2,970,914	2,708,058	
Number of E-ZPass Tags Issued <sup>11</sup>	44,167	625,515	525,004	
Total Active Tags <sup>12</sup>		4,688,463	4,359,151	
Total Reload Cards Distributed	2,763	145,814	109,458	
Reload Card % of Cash Replenishments	19.03%	16.09%	16.23%	

<b>Customer Service Indicators</b>				
	November 2015	YTD 2015	YTD 2014	
Phone Calls Answered by Customer Service Center:				
Customer Service Representatives	255,492	2,949,758	2,757,946	
Automated System	<u>553,090</u>	<u>6,144,433</u>	<u>5,271,808</u>	
Total Phone Calls Answered	808,582	9,094,191	8,029,754	
Average Phone Call Waiting Time (in min.):				
General Call Unit	0.12	0.31	0.67	
Commercial Call Unit	0.37	0.56	0.70	
Avg. Monthly B&T E-ZPass Trips Per Account	5.64	5.83	5.96	
Average Number of Active Tags Per Account	1.58	1.59	1.61	

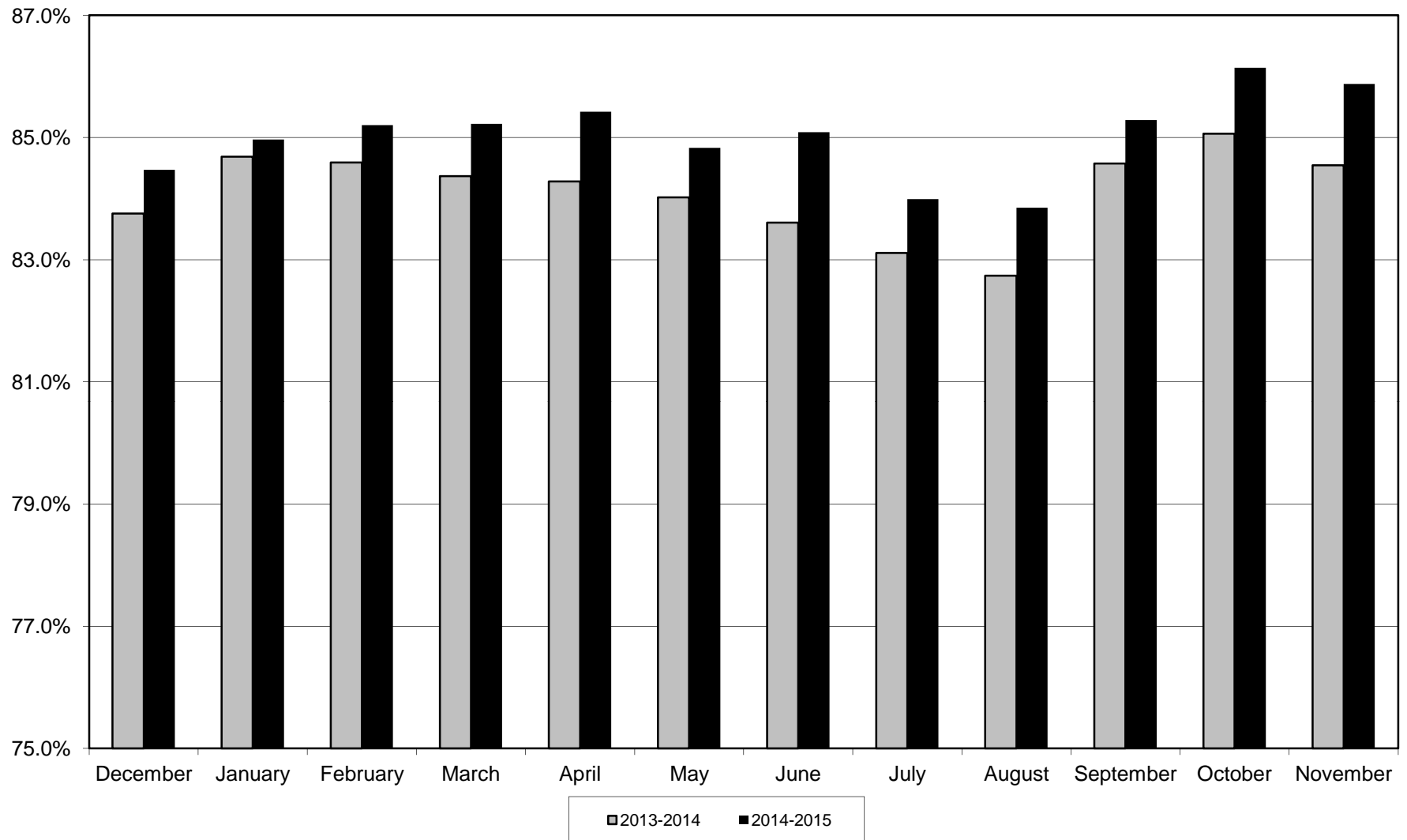
<b>E-ZPass Tag Replacement Program</b>				
	November 2015	YTD 2015	2011-2015	
Number of Replacement Tags Mailed	7,300	152,072	1,829,191	
Number of Tags Returned <sup>13</sup>	10,347	166,840	1,788,969	
Number of Tags Pending Return	N/A	N/A	40,222	

11. Includes tags for new accounts, additional tags for existing accounts, and replacement of lost or stolen tags for existing accounts. Excludes tags processed and reported within the E-ZPass Tag Replacement Program, which replaces tags that are approaching the end of their useful service lives with new tags.

12. Includes tags linked to active accounts, new tags issued through the E-ZPass Tag Replacement Program, and the associated replaced tags currently moving through the program's return process.

13. Includes tags reported as lost or stolen by the customer, and deactivated. Also, includes tags mailed in 2014 but returned in 2015.

**MTA Bridges and Tunnels  
E-ZPass Market Shares  
December 2013 through November 2015**





# **Bridges and Tunnels**

---

---

## **Financial Report November 2015**



**MTA BRIDGES & TUNNELS****STATEMENT OF NET POSITION****As of November 30, 2015**

(in thousands)

**ASSETS AND DEFERRED OUTFLOWS OF RESOURCES****CURRENT ASSETS:**

Cash-Unrestricted	\$17,501
Investments:	
Unrestricted	135,359
Restricted	617,985
Accrued interest receivable	704
Accounts receivable	19,820
Tolls due from other agencies	28,806
Prepaid expenses	<u>5,113</u>
Total current assets	<u>825,288</u>

**NONCURRENT ASSETS:**

Investments:	
Restricted	106,509
Insurance recovery receivable	124,351
Facilities, less acc.dep of \$1,374,420	4,584,381
Capital lease 2 Broadway net acc. dep.	41,184
Derivative Hedge Assets	3,597
Security Deposits	<u>18,435</u>
Total noncurrent assets	<u>4,878,457</u>

**TOTAL ASSETS:** 5,703,745**DEFERRED OUTFLOWS OF RESOURCES:**

Accumulated decreases in fair value of derivative instruments	171,662
Defeasance costs	<u>153,137</u>

**TOTAL DEFERRED OUTFLOWS OF RESOURCES:** 324,799**TOTAL ASSETS AND DEFERRED OUTFLOWS  
OF RESOURCES** \$6,028,544



**MTA BRIDGES & TUNNELS****STATEMENT OF NET POSITION****As of November 30, 2015**

(in thousands)

**LIABILITIES****CURRENT LIABILITIES:**

Current portion-long term debt	\$92,503
Interest Payable	31,428
Accounts Payable	45,160
Payable to MTA-CAP	46,179
Due to MTA-Operating Expenses	5,353
Due to NYCTA-Operating Expenses	1,129
Accrued salaries	11,490
Accrued Vac & Sick Benefits	18,833
Current portion of estimated liability arising from injury	3,060
Current portion of capital lease obligation	6,170
Pollution remediation projects	1,829
Due to New York City Transit Authority	57,250
Due to Metropolitan Transportation Authority	76,723
Pension Contribution Payable	16,477
Unredeemed Tolls	146,854
Tolls due to other agencies	44,442
E-ZPass Airport Toll Liability	<u>7,653</u>

Total current liabilities	<u>612,533</u>
---------------------------	----------------

**NONCURRENT LIABILITIES:**

Long term debt	8,853,878
Post Employment Benefits Other than Pensions	571,389
Estimated liability arising from injury	33,262
Capital lease obligations	138,787
Derivative Hedge Liabilities	175,998
Security deposits-Contra	<u>18,435</u>

Total noncurrent liabilities	<u>9,791,749</u>
------------------------------	------------------

<b>TOTAL LIABILITIES</b>	<b>10,404,282</b>
--------------------------	-------------------

<b>NET POSITION</b>	<b><u>(4,375,738) *</u></b>
---------------------	-----------------------------

<b>TOTAL LIABILITIES &amp; NET POSITION</b>	<b><u><u>\$6,028,544</u></u></b>
---	----------------------------------

\*The negative balance occurs because in prior years, MTA Bridges & Tunnels financed capital assets on behalf of MTA and NYCTA. The assets were transferred to MTA and NYCTA and taken off the MTA Bridges & Tunnels Statement of Net Position. The debt incurred to purchase these assets remained as a liability on the Statement of Net Position.

**MTA BRIDGES AND TUNNELS**  
**JULY FINANCIAL PLAN - 2015 MID-YEAR FORECAST**  
**ACCRUAL STATEMENT of OPERATIONS by CATEGORY**  
**November 2015**  
(\$ in millions)

	Nonreimbursable				Reimbursable				Total			
	Mid-Year Forecast	Actual	Favorable (Unfavorable)		Mid-Year Forecast	Actual	Favorable (Unfavorable)		Mid-Year Forecast	Actual	Favorable (Unfavorable)	
			Variance	Percent			Variance	Percent			Variance	Percent
<b>Revenue</b>												
Farebox Revenue	\$0.000	\$0.000	\$0.000	-	\$0.000	\$0.000	\$0.000	-	\$0.000	\$0.000	\$0.000	-
Vehicle Toll Revenue	145.354	151.046	5.692	3.9	0.000	0.000	0.000	-	145.354	151.046	5.692	3.9
Other Operating Revenue	2.695	3.353	0.658	24.4	0.000	0.000	0.000	-	2.695	3.353	0.658	24.4
Capital & Other Reimbursements	(0.000)	0.000	0.000	100.0	2.069	1.957	(0.112)	(5.4)	2.069	1.957	(0.112)	(5.4)
Investment Income	0.012	0.018	0.006	53.8	0.000	0.000	0.000	-	0.012	0.018	0.006	53.8
<b>Total Revenue</b>	<b>\$148.060</b>	<b>\$154.417</b>	<b>\$6.357</b>	<b>4.3</b>	<b>\$2.069</b>	<b>\$1.957</b>	<b>(\$0.112)</b>	<b>(5.4)</b>	<b>\$150.129</b>	<b>\$156.374</b>	<b>\$6.245</b>	<b>4.2</b>
<b>Expenses</b>												
<i>Labor:</i>												
Payroll	\$12.140	\$9.173	\$2.967	24.4	\$1.000	\$0.754	\$0.246	24.6	\$13.140	\$9.927	\$3.213	24.5
Overtime	2.474	1.534	0.940	38.0	0.164	0.075	0.089	54.3	2.638	1.609	1.029	39.0
Health and Welfare	2.410	2.020	0.390	16.2	0.243	0.156	0.087	35.8	2.653	2.176	0.477	18.0
OPEB Current Payment	1.394	1.414	(0.020)	(1.4)	0.000	0.000	0.000	-	1.394	1.414	(0.020)	(1.4)
Pensions	2.989	3.110	(0.121)	(4.1)	0.307	0.185	0.122	39.6	3.295	3.295	0.000	0.0
Other Fringe Benefits	1.001	0.663	0.338	33.7	0.154	0.087	0.067	43.7	1.155	0.750	0.405	35.1
Reimbursable Overhead	(0.201)	(0.700)	0.499	*	0.201	0.700	(0.499)	*	0.000	0.000	0.000	-
<b>Total Labor Expenses</b>	<b>\$22.207</b>	<b>\$17.214</b>	<b>\$4.993</b>	<b>22.5</b>	<b>\$2.069</b>	<b>\$1.957</b>	<b>\$0.112</b>	<b>5.4</b>	<b>\$24.276</b>	<b>\$19.171</b>	<b>\$5.105</b>	<b>21.0</b>
<i>Non-Labor:</i>												
Electric Power	\$0.437	\$0.285	\$0.152	34.8	\$0.000	\$0.000	\$0.000	-	\$0.437	\$0.285	\$0.152	34.8
Fuel	0.301	0.128	0.173	57.4	0.000	0.000	0.000	-	0.301	0.128	0.173	57.4
Insurance	1.207	1.149	0.058	4.8	0.000	0.000	0.000	-	1.207	1.149	0.058	4.8
Claims	0.000	0.000	0.000	-	0.000	0.000	0.000	-	0.000	0.000	0.000	-
Paratransit Service Contracts	0.000	0.000	0.000	-	0.000	0.000	0.000	-	0.000	0.000	0.000	-
Maintenance and Other Operating Contracts	12.310	10.048	2.262	18.4	0.000	0.000	0.000	-	12.310	10.048	2.262	18.4
Professional Service Contracts	3.684	1.862	1.822	49.5	0.000	0.000	0.000	-	3.684	1.862	1.822	49.5
Materials & Supplies	0.302	0.160	0.142	47.0	0.000	0.000	0.000	-	0.302	0.160	0.142	47.0
Other Business Expenses	2.104	2.259	(0.155)	(7.4)	0.000	0.000	0.000	-	2.104	2.259	(0.155)	(7.4)
<b>Total Non-Labor Expenses</b>	<b>\$20.345</b>	<b>\$15.891</b>	<b>\$4.454</b>	<b>21.9</b>	<b>\$0.000</b>	<b>\$0.000</b>	<b>\$0.000</b>	<b>-</b>	<b>\$20.345</b>	<b>\$15.891</b>	<b>\$4.454</b>	<b>21.9</b>
<b>Other Expense Adjustments:</b>												
Other	0.000	0.000	0.000	-	0.000	0.000	0.000	-	0.000	0.000	0.000	-
<b>Total Other Expense Adjustments</b>	<b>\$0.000</b>	<b>\$0.000</b>	<b>\$0.000</b>	<b>-</b>	<b>\$0.000</b>	<b>\$0.000</b>	<b>\$0.000</b>	<b>-</b>	<b>\$0.000</b>	<b>\$0.000</b>	<b>\$0.000</b>	<b>-</b>
<b>Total Expenses before Non-Cash Liability Adjs.</b>	<b>\$42.552</b>	<b>\$33.105</b>	<b>\$9.447</b>	<b>22.2</b>	<b>\$2.069</b>	<b>\$1.957</b>	<b>\$0.112</b>	<b>5.4</b>	<b>\$44.620</b>	<b>\$35.062</b>	<b>\$9.558</b>	<b>21.4</b>
Depreciation	\$9.377	\$9.091	\$0.286	3.0	\$0.000	\$0.000	\$0.000	-	\$9.377	\$9.091	\$0.286	3.0
OPEB Obligation	6.008	5.929	0.079	1.3	0.000	0.000	0.000	-	6.008	5.929	0.079	1.3
<b>Total Expenses after Non-Cash Liability Adjs.</b>	<b>\$57.936</b>	<b>\$48.125</b>	<b>\$9.811</b>	<b>16.9</b>	<b>\$2.069</b>	<b>\$1.957</b>	<b>\$0.112</b>	<b>5.4</b>	<b>\$60.005</b>	<b>\$50.082</b>	<b>\$9.923</b>	<b>16.5</b>
Less: Depreciation	\$9.377	\$9.091	\$0.286	3.0	\$0.000	\$0.000	\$0.000	-	\$9.377	\$9.091	\$0.286	3.0
Less: OPEB Obligation	6.008	5.929	0.079	1.3	0.000	0.000	0.000	-	6.008	5.929	0.079	1.3
<b>Total Expenses</b>	<b>\$42.552</b>	<b>\$33.105</b>	<b>\$9.447</b>	<b>22.2</b>	<b>\$2.069</b>	<b>\$1.957</b>	<b>\$0.112</b>	<b>5.4</b>	<b>\$44.620</b>	<b>\$35.062</b>	<b>\$9.558</b>	<b>21.4</b>
<b>Net Surplus/(Deficit)</b>	<b>\$105.509</b>	<b>\$121.312</b>	<b>\$15.803</b>	<b>15.0</b>	<b>\$0.000</b>	<b>\$0.000</b>	<b>\$0.000</b>	<b>-</b>	<b>\$105.509</b>	<b>\$121.312</b>	<b>\$15.803</b>	<b>15.0</b>

Differences are due to rounding.

\*Variance exceeds 100%

**MTA BRIDGES AND TUNNELS**  
**JULY FINANCIAL PLAN - 2015 MID-YEAR FORECAST**  
**ACCRUAL STATEMENT of OPERATIONS by CATEGORY**  
**November 2015**  
(\$ in millions)

	Nonreimbursable				Reimbursable				Total			
	Favorable (Unfavorable)				Favorable (Unfavorable)				Favorable (Unfavorable)			
	Mid-Year Forecast	Actual	Variance	Percent	Mid-Year Forecast	Actual	Variance	Percent	Mid-Year Forecast	Actual	Variance	Percent
<b>Net Income/(Deficit)</b>									<b>\$105.509</b>	<b>\$121.312</b>	<b>\$15.803</b>	<b>15.0</b>
Less: Capitalized Assets									2.144	0.202	1.942	90.6
Reserves									2.210	2.210	0.000	0.0
<b>Adjusted Net Income/(Deficit)</b>									<b>\$101.155</b>	<b>\$118.900</b>	<b>\$17.745</b>	<b>17.5</b>
Less: Debt Service									52.730	51.360	1.370	2.6
<b>Income Available for Distribution</b>									<b>\$48.425</b>	<b>\$67.540</b>	<b>\$19.115</b>	<b>39.5</b>
Distributable To:												
MTA - Investment Income									0.012	0.018	0.006	53.8
MTA - Distributable Income									28.659	38.651	9.992	34.9
NYCTR - Distributable Income									19.754	28.868	9.114	46.1
<b>Total Distributable Income</b>									<b>\$48.425</b>	<b>\$67.537</b>	<b>\$19.112</b>	<b>39.5</b>
<b>Support to Mass Transit:</b>												
Total Revenues									150.129	156.374	6.245	4.2
Less: Total Operating Expenses									<u>44.620</u>	<u>35.062</u>	<u>9.558</u>	21.4
<b>Net Operating Income/(Deficit)</b>									<b>\$105.509</b>	<b>\$121.312</b>	<b>\$15.803</b>	<b>15.0</b>
Deductions from Net Operating Income:												
Capitalized Assets									2.144	0.202	1.942	90.6
Reserves									2.210	2.210	(0.000)	(0.0)
B&T Debt Service									23.237	19.566	3.671	15.8
<b>Total Deductions From Operating Income</b>									<b>\$27.591</b>	<b>\$21.978</b>	<b>\$5.613</b>	<b>20.3</b>
<b>Total Support to Mass Transit</b>									<b>\$77.918</b>	<b>\$99.334</b>	<b>\$21.416</b>	<b>27.5</b>

**Note:** Results are based on the preliminary close of the general ledger and are subject to review and adjustment. Please note that the current months' actuals do not include post-close adjustments, which will be captured in the subsequent month's YTD results.

**MTA BRIDGES AND TUNNELS**  
**JULY FINANCIAL PLAN - 2015 MID-YEAR FORECAST**  
**ACCRUAL STATEMENT of OPERATIONS by CATEGORY**  
**November Year-To-Date**  
(\$ in millions)

	Nonreimbursable				Reimbursable				Total			
	Mid-Year Forecast	Actual	Favorable (Unfavorable) Variance	Percent	Mid-Year Forecast	Actual	Favorable (Unfavorable) Variance	Percent	Mid-Year Forecast	Actual	Favorable (Unfavorable) Variance	Percent
<b>Revenue</b>												
Farebox Revenue	\$0.000	\$0.000	\$0.000	-	\$0.000	\$0.000	\$0.000	-	\$0.000	\$0.000	\$0.000	-
Vehicle Toll Revenue	1,625.443	1,653.607	28.164	1.7	0.000	0.000	0.000	-	1,625.443	1,653.607	28.164	1.7
Other Operating Revenue	24.988	35.250	10.262	41.1	0.000	0.000	0.000	-	24.988	35.250	10.262	41.1
Capital & Other Reimbursements	(0.000)	0.000	0.000	100.0	20.458	19.342	(1.116)	(5.5)	20.458	19.342	(1.116)	(5.5)
Investment Income	0.128	0.162	0.034	26.4	0.000	0.000	0.000	-	0.128	0.162	0.034	26.4
<b>Total Revenue</b>	<b>\$1,650.559</b>	<b>\$1,689.019</b>	<b>\$38.460</b>	<b>2.3</b>	<b>\$20.458</b>	<b>\$19.342</b>	<b>(\$1.116)</b>	<b>(5.5)</b>	<b>\$1,671.017</b>	<b>\$1,708.361</b>	<b>\$37.344</b>	<b>2.2</b>
<b>Expenses</b>												
<i>Labor:</i>												
Payroll	\$122.872	\$106.640	\$16.232	13.2	\$8.741	\$7.502	\$1.239	14.2	\$131.613	\$114.142	\$17.471	13.3
Overtime	23.570	20.314	3.256	13.8	1.242	0.827	0.415	33.4	24.812	21.141	3.671	14.8
Health and Welfare	24.868	22.721	2.147	8.6	2.026	1.550	0.476	23.5	26.894	24.271	2.623	9.8
OPEB Current Payment	15.223	15.374	(0.151)	(1.0)	0.000	0.000	0.000	-	15.223	15.374	(0.151)	(1.0)
Pensions	36.135	36.678	(0.543)	(1.5)	2.382	1.838	0.544	22.8	38.516	38.516	0.000	0.0
Other Fringe Benefits	16.243	14.770	1.473	9.1	1.195	0.864	0.331	27.7	17.438	15.634	1.804	10.3
Reimbursable Overhead	(4.873)	(6.761)	1.888	38.7	4.873	6.761	(1.888)	(38.7)	0.000	0.000	0.000	-
<b>Total Labor Expenses</b>	<b>\$234.037</b>	<b>\$209.736</b>	<b>\$24.301</b>	<b>10.4</b>	<b>\$20.458</b>	<b>\$19.342</b>	<b>\$1.116</b>	<b>5.5</b>	<b>\$254.496</b>	<b>\$229.078</b>	<b>\$25.418</b>	<b>10.0</b>
<i>Non-Labor:</i>												
Electric Power	\$5.124	\$4.690	\$0.434	8.5	\$0.000	\$0.000	\$0.000	-	\$5.124	\$4.690	\$0.434	8.5
Fuel	2.162	1.510	0.652	30.2	0.000	0.000	0.000	-	2.162	1.510	0.652	30.2
Insurance	13.635	13.114	0.521	3.8	0.000	0.000	0.000	-	13.635	13.114	0.521	3.8
Claims	0.000	0.000	0.000	-	0.000	0.000	0.000	-	0.000	0.000	0.000	-
Paratransit Service Contracts	0.000	0.000	0.000	-	0.000	0.000	0.000	-	0.000	0.000	0.000	-
Maintenance and Other Operating Contracts	103.191	93.313	9.878	9.6	0.000	0.000	0.000	-	103.191	93.313	9.878	9.6
Professional Service Contracts	33.132	21.510	11.622	35.1	0.000	0.000	0.000	-	33.132	21.510	11.622	35.1
Materials & Supplies	3.152	2.247	0.905	28.7	0.000	0.000	0.000	-	3.152	2.247	0.905	28.7
Other Business Expenses	25.528	26.085	(0.557)	(2.2)	0.000	0.000	0.000	-	25.528	26.085	(0.557)	(2.2)
<b>Total Non-Labor Expenses</b>	<b>\$185.924</b>	<b>\$162.469</b>	<b>\$23.455</b>	<b>12.6</b>	<b>\$0.000</b>	<b>\$0.000</b>	<b>\$0.000</b>	<b>-</b>	<b>\$185.924</b>	<b>\$162.469</b>	<b>\$23.455</b>	<b>12.6</b>
<b>Other Expense Adjustments</b>												
Other	0.000	0.000	0.000	-	0.000	0.000	0.000	-	0.000	0.000	0.000	-
<b>Total Other Expense Adjustments</b>	<b>\$0.000</b>	<b>\$0.000</b>	<b>\$0.000</b>	<b>-</b>	<b>\$0.000</b>	<b>\$0.000</b>	<b>\$0.000</b>	<b>-</b>	<b>\$0.000</b>	<b>\$0.000</b>	<b>\$0.000</b>	<b>-</b>
<b>Total Expenses before Non-Cash Liability Adjs.</b>	<b>\$419.961</b>	<b>\$372.205</b>	<b>\$47.756</b>	<b>11.4</b>	<b>\$20.458</b>	<b>\$19.342</b>	<b>\$1.116</b>	<b>5.5</b>	<b>\$440.420</b>	<b>\$391.547</b>	<b>\$48.873</b>	<b>11.1</b>
Depreciation	\$102.290	\$100.668	\$1.622	1.6	\$0.000	\$0.000	\$0.000	-	\$102.290	\$100.668	\$1.622	1.6
OPEB Obligation	65.692	65.219	0.473	0.7	0.000	0.000	0.000	-	65.692	65.219	0.473	0.7
<b>Total Expenses after Non-Cash Liability Adjs.</b>	<b>\$587.944</b>	<b>\$538.092</b>	<b>\$49.852</b>	<b>8.5</b>	<b>\$20.458</b>	<b>\$19.342</b>	<b>\$1.116</b>	<b>5.5</b>	<b>\$608.402</b>	<b>\$557.434</b>	<b>\$50.968</b>	<b>8.4</b>
Less: Depreciation	\$102.290	\$100.668	\$1.622	1.6	\$0.000	\$0.000	\$0.000	-	\$102.290	\$100.668	\$1.622	1.6
Less: OPEB Obligation	65.692	65.219	0.473	0.7	0.000	0.000	0.000	-	65.692	65.219	0.473	0.7
<b>Total Expenses</b>	<b>\$419.961</b>	<b>\$372.205</b>	<b>\$47.756</b>	<b>11.4</b>	<b>\$20.458</b>	<b>\$19.342</b>	<b>\$1.116</b>	<b>5.5</b>	<b>\$440.420</b>	<b>\$391.547</b>	<b>\$48.873</b>	<b>11.1</b>
<b>Net Surplus/(Deficit)</b>	<b>\$1,230.598</b>	<b>\$1,316.814</b>	<b>\$86.216</b>	<b>7.0</b>	<b>\$0.000</b>	<b>\$0.000</b>	<b>\$0.000</b>	<b>-</b>	<b>\$1,230.598</b>	<b>\$1,316.814</b>	<b>\$86.216</b>	<b>7.0</b>

Differences are due to rounding.

\*Variance exceeds 100%

**MTA BRIDGES AND TUNNELS**  
**JULY FINANCIAL PLAN - 2015 MID-YEAR FORECAST**  
**ACCRUAL STATEMENT of OPERATIONS by CATEGORY**  
**November Year-To-Date**  
(\$ in millions)

	Nonreimbursable				Reimbursable				Total			
	Mid-Year Forecast	Actual	Favorable (Unfavorable)		Mid-Year Forecast	Actual	Favorable (Unfavorable)		Mid-Year Forecast	Actual	Favorable (Unfavorable)	
			Variance	Percent			Variance	Percent			Variance	Percent
<b>Net Income/(Deficit)</b>									<b>\$1,230.598</b>	<b>\$1,316.814</b>	<b>\$86.216</b>	<b>7.0</b>
Less: Capitalized Assets									13.998	4.736	\$9.262	66.2
Reserves									24.172	24.172	0.000	0.0
<b>Adjusted Net Income/(Deficit)</b>									<b>\$1,192.427</b>	<b>\$1,287.906</b>	<b>\$95.478</b>	<b>8.0</b>
Less: Debt Service									569.566	557.316	12.250	2.2
<b>Income Available for Distribution</b>									<b>\$622.862</b>	<b>\$730.590</b>	<b>\$107.728</b>	<b>17.3</b>
Distributable To:												
MTA - Investment Income									0.128	0.162	0.034	26.4
MTA - Distributable Income									333.544	417.744	84.200	25.2
NYCTR - Distributable Income									240.777	312.681	71.904	29.9
<b>Total Distributable Income</b>									<b>\$574.449</b>	<b>\$730.587</b>	<b>\$156.138</b>	<b>27.2</b>
<b>Support to Mass Transit:</b>												
Total Revenues									1,671.017	1,708.361	37.344	2.2
Less: Total Operating Expenses									<u>440.420</u>	<u>391.547</u>	<u>48.873</u>	11.1
<b>Net Operating Income/(Deficit)</b>									<b>\$1,230.598</b>	<b>\$1,316.814</b>	<b>\$86.216</b>	<b>7.0</b>
Deductions from Net Operating Income:												
Capitalized Assets									13.998	4.736	9.262	66.2
Reserves									24.172	24.172	0.000	0.0
B&T Debt Service									234.212	212.050	22.162	9.5
<b>Total Deductions From Operating Income</b>									<b>\$272.382</b>	<b>\$240.958</b>	<b>\$31.423</b>	<b>11.5</b>
<b>Total Support to Mass Transit</b>									<b>\$958.216</b>	<b>\$1,075.856</b>	<b>\$117.640</b>	<b>12.3</b>

**Note:** Results are based on the preliminary close of the general ledger and are subject to review and adjustment. Please note that the current months' actuals do not include post-close adjustments, which will be captured in the subsequent month's YTD results.

**MTA BRIDGES AND TUNNELS**  
**JULY FINANCIAL PLAN - 2015 MID-YEAR FORECAST**  
**EXPLANATION OF VARIANCES BETWEEN BUDGET AND ACTUAL ACCRUAL BASIS**  
(\$ in millions)

			November 2015		Year-to-Date	
Generic Revenue or Expense Category	Favorable/ (Unfavorable) Variance		Reason for Variance	Favorable/ (Unfavorable) Variance		Reason for Variance
	\$	%		\$	%	
Nonreimbursable						
Vehicle Toll Revenue	5.692	3.9%	Higher toll revenue primarily due to a 4.0% increase in traffic.	28.164	1.7%	Higher toll revenue primarily due to a 1.6% increase in traffic.
Other Operating Revenue	0.658	24.4%	Higher Other Operating Revenue primarily due to higher E-ZPass and other toll administrative fees.	10.262	41.1%	Higher Other Operating Revenue primarily due to FEMA reimbursements (\$5.117M) and higher E-ZPass and other toll administrative fees (\$1.636M).
Investment Income	0.006	53.8%	Minor variance.	0.034	26.4%	Minor variance.
Payroll	2.967	24.4%	Lower payroll expenses against the monthly forecast allocation due to vacancies.	16.232	13.2%	Lower payroll expenses against the YTD forecast allocation due to vacancies.
Overtime	0.940	38.0%	See overtime tables.	3.256	13.8%	See overtime tables.
Health and Welfare	0.390	16.2%	Lower expenses against the monthly forecast allocation primarily due to vacancies.	2.147	8.6%	Lower expenses primarily due to vacancies against the YTD forecast allocation.
OPEB Current Payment	(0.020)	-1.4%	Minor variance.	(0.151)	-1.0%	Minor variance.
Pensions	(0.121)	-4.1%	Minor variance.	(0.543)	-1.5%	Minor variance.
Other Fringe Benefits	0.338	33.7%	Lower expenses primarily due to lower Social Security taxes (\$0.335M) due to vacancies.	1.473	9.1%	Lower expenses primarily due to lower Social Security taxes (\$1.389M) due to vacancies.
Electric Power	0.152	34.8%	Lower electricity expenses against the monthly forecast allocation.	0.434	8.5%	Lower electricity expenses against the YTD forecast allocation.
Fuel	0.173	57.4%	Lower fuel expenses against the monthly forecast allocation.	0.652	30.2%	Lower fuel expenses against the YTD forecast allocation.
Insurance	0.058	4.8%	Minor variance.	0.521	3.8%	Minor variance.
Maintenance and Other Operating Contracts	2.262	18.4%	Lower expenses for Major Maintenance & Painting (\$1.489M), Security and Surveillance Equipment (\$0.458M) and other expenses against the monthly forecast allocation.	9.878	9.6%	Lower expenses for Major Maintenance & Painting (\$2.730M), Hurricane Sandy restoration work (\$2.143M), Security and Surveillance Equipment (\$1.617M), E-ZPass Tags (\$1.307M), Security Services costs (\$0.638M), and other expenses due to timing.
Professional Service Contracts	1.822	49.5%	Lower expenses primarily for Bond Issuance Costs (\$1.160M), Engineer Services (\$0.372M) and other expenses against the monthly forecast allocation.	11.622	35.1%	Lower expenses primarily for Bond Issuance Costs (\$7.710M), Engineer Services (\$1.875M), Planning Studies Consultants (\$0.583M), IT Maintenance (\$0.572M), IT Consult Services (\$0.366M) and other expenses.
Materials & Supplies	0.142	47.0%	Lower expenses across a variety of small equipment and supply categories against the monthly forecast allocation.	0.905	28.7%	Lower expenses across a variety of small equipment and supply categories against the YTD forecast allocation.
Other Business Expense	(0.155)	-7.4%	Minor variance.	(0.557)	-2.2%	Minor variance.
Depreciation	0.286	3.0%	Minor variance.	1.622	1.6%	Minor variance.
Other Post Employment Benefits	0.079	1.3%	Minor variance.	0.473	0.7%	Minor variance.
Reimbursable						
Capital and Other Reimbursements	(0.112)	-5.4%	Lower capital reimbursements against the monthly forecast allocation.	(1.116)	-5.5%	Lower capital reimbursements against the YTD forecast allocation.
Payroll	0.246	24.6%	Lower than planned reimbursable expenses against the monthly forecast allocation.	1.239	14.2%	Lower than planned reimbursable expenses against the YTD forecast allocation.
Overtime	0.089	54.3%	See overtime tables.	0.415	33.4%	See overtime tables.
Health and Welfare	0.087	35.8%	Lower than planned reimbursable expenses against the monthly forecast allocation.	0.476	23.5%	Lower than planned reimbursable expenses against the YTD forecast allocation.
OPEB Current Payment	0.000	-	No variance.	0.000	-	No variance.
Pensions	0.122	39.6%	Lower than planned reimbursable expenses against the monthly forecast allocation.	0.544	22.8%	Lower than planned reimbursable expenses against the YTD forecast allocation.
Other Fringe Benefits	0.067	43.7%	Lower than planned reimbursable expenses against the monthly forecast allocation.	0.331	27.7%	Lower than planned reimbursable expenses against the YTD forecast allocation.
Reimbursable Overhead	(0.499)	*	Higher than planned reimbursable expenses against the monthly forecast allocation.	(1.888)	-38.7%	Higher than planned reimbursable expenses against the YTD forecast allocation.

\*Variance exceeds 100%

**MTA Bridges and Tunnels**  
**July Financial Plan - 2015 Mid-Year Forecast**  
**Non-Reimbursable/Reimbursable Overtime**  
(\$ in millions)

	November						November Year-to-Date					
	MidYear Forecast		Actuals		Var. - Fav./(Unfav)		MidYear Forecast		Actuals		Var. - Fav./(Unfav)	
	Hours	\$	Hours	\$	Hours	\$	Hours	\$	Hours	\$	Hours	\$
<b>NON-REIMBURSABLE OVERTIME</b>												
<b>OPERATIONS &amp; MAINTENANCE</b>												
<u>Scheduled Service</u>	5,976	\$0.403	5,389	\$0.364	587 9.8%	\$0.039 9.7%	51,436	\$3.322	51,042	\$3.297	395 0.8%	\$0.025 0.8%
<u>Unscheduled Service</u>	317	\$0.023	44	\$0.003	274 86.3%	\$0.020 87.0%	6,180	\$0.404	5,046	\$0.329	1,135 18.4%	\$0.075 18.6%
<u>Programmatic/Routine Maintenance</u>	946	\$0.080	1,469	\$0.125	(523) -55.3%	(\$0.045) -55.7%	11,292	\$0.899	14,468	\$1.159	(3,176) -28.1%	(\$0.260) -28.9%
<u>Unscheduled Maintenance</u>	909	\$0.077	789	\$0.067	120 13.2%	\$0.010 13.2%	10,111	\$0.838	11,076	\$0.917	(965) -9.5%	(\$0.079) -9.4%
<u>Vacancy/Absentee Coverage</u>	17,490	\$1.198	14,269	\$0.977	3,221 18.4%	\$0.221 18.4%	171,586	\$11.374	161,334	\$10.696	10,253 6.0%	\$0.678 6.0%
<u>Weather Emergencies</u>	281	\$0.020	0	\$0.000	281	\$0.020	17,422	\$1.285	17,250	\$1.272	172 1.0%	\$0.014 1.1%
<u>Safety/Security/Law Enforcement</u>	3,035	\$0.202	1,244	\$0.083	1,792 59.0%	\$0.119 59.0%	32,836	\$2.129	24,212	\$1.565	8,625 26.3%	\$0.564 26.5%
<u>Other</u>	190	\$0.016	346	\$0.029	(156) -81.8%	(\$0.013) -79.8%	2,109	\$0.167	1,663	\$0.131	446 21.1%	\$0.036 21.3%
<u>*All Other Departments and Accruals</u>		\$0.454		(\$0.114)		\$0.568 125.0%		\$3.151		\$0.948		\$2.202 69.9%
Subtotal	29,144	\$2.474	23,549	\$1.534	5,596 19.2%	\$0.940 38.0%	302,972	\$23.570	286,088	\$20.314	16,884 5.6%	\$3.256 13.8%
<b>REIMBURSABLE OVERTIME</b>	2,240	\$0.164	1,100	\$0.075	1,140	\$0.089	18,480	\$1.242	13,125	\$0.827	5,355	\$0.415
<b>TOTAL OVERTIME</b>	<b>31,384</b>	<b>\$2.638</b>	<b>24,649</b>	<b>\$1.609</b>	<b>6,736</b> 21.5%	<b>\$1.029</b> 39.0%	<b>321,452</b>	<b>\$24.812</b>	<b>299,213</b>	<b>\$21.141</b>	<b>22,239</b> 6.9%	<b>\$3.671</b> 14.8%

Figures are preliminary.

Totals may not add due to rounding

NOTE: Percentages are based on each type of Overtime and not on Total Overtime.

\*Includes overtime for all departments other than Operations and Maintenance, and adjustments to reflect the 28-day payroll lag.

**MTA Bridges and Tunnels**  
**July Financial Plan - 2015 Mid-Year Forecast**  
**Non-Reimbursable/Reimbursable Overtime**  
(\$ in millions)

	Monthly			Year-to-Date		
	Var. - Fav./(Unfav)		Explanations	Var. - Fav./(Unfav)		Explanations
	November	\$		Hours	\$	
<b>NON-REIMBURSABLE OVERTIME</b>						
<b>OPERATIONS &amp; MAINTENANCE</b>						
<u>Scheduled Service</u>	587 9.8%	\$0.039 9.7%	Lower than planned expenses	395 0.8%	\$0.025 0.8%	Lower than planned expenses
<u>Unscheduled Service</u>	274 86.3%	\$0.020 87.0%	Lower than planned expenses	1,135 18.4%	\$0.075 18.6%	Lower than planned expenses
<u>Programmatic/Routine Maintenance</u>	(523) -55.3%	(\$0.045) -55.7%	Higher than planned expenses	(3,176) -28.1%	(\$0.260) -28.9%	Higher than planned expenses
<u>Unscheduled Maintenance</u>	120 13.2%	\$0.010 13.2%	Minor Variance	(965) -9.5%	(\$0.079) -9.4%	Higher than planned expenses
<u>Vacancy/Absentee Coverage</u>	3,221 18.4%	\$0.221 18.4%	Lower than planned expenses	10,253 6.0%	\$0.678 6.0%	Lower than planned expenses
<u>Weather Emergencies</u>	281 0.0%	\$0.020 0.0%	Lower than planned expenses	172 1.0%	\$0.014 1.1%	Minor Variance
<u>Safety/Security/Law Enforcement</u>	1,792 59.0%	\$0.119 59.0%	Lower than planned expenses	8,625 26.3%	\$0.564 26.5%	Lower than planned expenses
<u>Other</u>	(156) -81.8%	(\$0.013) -79.8%	Minor Variance	446 21.1%	\$0.036 21.3%	Lower than planned expenses
<u>*All Other Departments and Accruals</u>		\$0.568 125.0%	Primarily due to adjustments for the 28-day OT payroll lag		\$2.202 69.9%	Primarily due to adjustments for the 28-day OT payroll lag
<b>Subtotal</b>	5,596 19.2%	\$0.940 38.0%		16,884 5.6%	\$3.256 13.8%	
<b>REIMBURSABLE OVERTIME</b>	1,140 0.0%	\$0.089 0.0%	Due to the timing of capital project hours billed to the capital program	5,355 0.0%	\$0.415 0.0%	Due to the timing of capital project hours billed to the capital program
<b>TOTAL OVERTIME</b>	<b>6,736</b>	<b>\$1.029</b>		<b>22,239</b>	<b>\$3.671</b>	

Figures are preliminary.

Totals may not add due to rounding

NOTE: Percentages are based on each type of Overtime and not on Total Overtime.

\*Includes overtime for all departments other than Operations and Maintenance, and adjustments to reflect the 28-day payroll lag.



**METROPOLITAN TRANSPORTATION AUTHORITY**  
**2015 Overtime Reporting**  
**Overtime Legend**

**OVERTIME DECOMPOSITION LEGEND DEFINITIONS**

<b><u>Type</u></b>	<b><u>Definition</u></b>
<i>Scheduled Service</i>	Crew book/Regular Run/Shift hours (above 8 hours) required by train crews, bus/tower/block operators, transportation supervisors/dispatchers, fare sales and collection, Train & Engineers, as well as non-transportation workers whose work is directly related to providing service (includes coverage for holidays).
<i>Unscheduled Service</i>	Service coverage resulting from extraordinary events not related to weather, such as injuries, mechanical breakdowns, unusual traffic, tour length, late tour relief, and other requirements that arise that are non-absence related.
<i>Programmatic/Routine Maintenance</i>	<i>Program Maintenance</i> work for which overtime is planned (e.g. Railroad Tie Replacement, Sperry Rail Testing, Running Board Replacement Programs). This also includes <i>Routine Maintenance</i> work for which OT has been planned, as well as all other maintenance <u>not resulting from extraordinary events</u> , including running repairs. Program/Routine maintenance work is usually performed during hours that are deemed more practical in order to minimize service disruptions, and includes contractual scheduled pay over 8 hours.
<i>Unscheduled Maintenance</i>	Resulting from an <u>extraordinary event</u> (not weather-related) requiring the use of unplanned maintenance to perform repairs on trains, buses, subway and bus stations, depots, tracks and administrative and other facilities, including derailments, tour length and weekend coverage.
<i>Vacancy/Absentee Coverage</i>	Provides coverage for an absent employee or a vacant position.
<i>Weather Emergencies</i>	Coverage necessitated by extreme weather conditions (e.g. snow, flooding, hurricane, and tornadoes), as well as preparatory and residual costs.
<i>Safety/Security/Law Enforcement</i>	Coverage required to provide additional customer & employee protection and to secure MTA fleet facilities, transportation routes, and security training.
<i>Other</i>	Includes overtime coverage for clerical, administrative positions that are eligible for overtime.
<i>Reimbursable Overtime</i>	Overtime incurred to support projects that are reimbursed from the MTA Capital Program and other funding sources.

**MTA BRIDGES AND TUNNELS  
TRAFFIC VOLUME AND REVENUE  
(millions)**

**Month of November**

**Year to date ending November 2015**

**Comparison Current Year vs. Prior Year:**

<b>Prior Year</b>		<b>Current Year*</b>		<b>Percentage Change</b>			<b>Prior Year</b>		<b>Current Year*</b>		<b>Percentage Change</b>	
<b>Traffic</b>	<b>Revenue</b>	<b>Traffic</b>	<b>Revenue</b>	<b>Traffic</b>	<b>Revenue</b>		<b>Traffic</b>	<b>Revenue</b>	<b>Traffic</b>	<b>Revenue</b>	<b>Traffic</b>	<b>Revenue</b>
3.1	\$21.1	3.6	\$25.0	13.8%	18.4%	Bronx-Whitestone	35.3	\$238.7	38.4	\$268.2	9.0%	12.3%
0.6	1.2	0.6	1.3	5.4%	9.0%	Cross Bay	6.9	15.0	7.3	16.1	5.2%	7.4%
1.9	5.4	2.0	6.3	6.8%	16.5%	Henry Hudson	20.4	59.4	21.2	65.1	3.9%	9.6%
1.4	8.4	1.5	9.0	4.2%	7.8%	Hugh L. Carey	15.4	90.4	16.1	97.5	4.5%	7.9%
0.6	1.1	0.6	1.3	8.3%	13.6%	Marine Parkway	6.8	14.4	7.1	15.5	4.5%	8.1%
2.4	14.5	2.4	15.2	1.6%	5.2%	Queens Midtown	26.6	163.8	26.3	167.1	-0.9%	2.0%
2.3	16.6	2.4	17.9	3.1%	8.2%	RFK - Bronx	26.4	187.4	27.2	199.7	2.9%	6.6%
2.6	15.4	2.7	17.2	6.8%	11.3%	RFK - Manhattan	28.5	173.3	29.9	187.5	4.9%	8.2%
3.4	24.7	3.5	27.2	4.1%	9.9%	Throgs Neck	37.4	276.7	38.6	297.1	3.2%	7.4%
5.2	27.8	5.5	30.6	5.3%	9.9%	Verrazano-Narrows	58.5	317.9	60.4	339.8	3.3%	6.9%
<b>23.4</b>	<b>\$136.3</b>	<b>24.8</b>	<b>\$151.0</b>	<b>6.0%</b>	<b>10.8%</b>	<b>Total</b>	<b>262.2</b>	<b>\$1,537.0</b>	<b>272.6</b>	<b>\$1,653.6</b>	<b>3.9%</b>	<b>7.6%</b>
	<b>\$5.824</b>		<b>\$6.092</b>		<b>4.6%</b>	<b>Revenue Per Vehicle</b>		<b>\$5.862</b>		<b>\$6.067</b>		<b>3.5%</b>

\*Toll increase implemented on March 22, 2015

Note: Numbers may not add due to rounding.

**Comparison Actual vs. Mid-Year Forecast:**

<b>Mid-Year Forecast</b>		<b>Nov Actual</b>		<b>Percentage Change</b>			<b>Mid-Year Forecast</b>		<b>YTD Actual</b>		<b>Percentage Change</b>	
<b>Traffic</b>	<b>Revenue</b>	<b>Traffic</b>	<b>Revenue</b>	<b>Traffic</b>	<b>Revenue</b>		<b>Traffic</b>	<b>Revenue</b>	<b>Traffic</b>	<b>Revenue</b>	<b>Traffic</b>	<b>Revenue</b>
<b>23.8</b>	<b>145.4</b>	<b>24.8</b>	<b>151.0</b>	<b>4.0%</b>	<b>3.9%</b>	<b>Total All</b>	<b>268.2</b>	<b>\$1,625.4</b>	<b>272.6</b>	<b>\$1,653.6</b>	<b>1.6%</b>	<b>1.7%</b>
	<b>\$6.098</b>		<b>\$6.092</b>		<b>-0.1%</b>	<b>Revenue Per Vehicle</b>		<b>\$6.060</b>		<b>\$6.067</b>		<b>0.1%</b>

**MTA BRIDGES AND TUNNELS**  
**JULY FINANCIAL PLAN - 2015 MID-YEAR FORECAST**  
**TOTAL POSITIONS BY FUNCTION AND DEPARTMENT**  
**NON-REIMBURSABLE/REIMBURSABLE and FULL-TIME POSITIONS/FULL-TIME EQUIVALENTS**  
**November 2015**

Department	Mid-Year Forecast	Actual	Favorable (Unfavorable) Variance	Explanation of Variances
<b>Administration</b>				
Executive	7	8	(1)	1 Managerial overage
Law <sup>(1)</sup>	12	13	(1)	1 Professional overage
CFO <sup>(2)</sup>	30	17	13	7 Managerial and 6 Professional vacancies
Administration <sup>(3)</sup>	36	36	-	
EEO	2	1	1	1 Managerial vacancy
<b>Total Administration</b>	<b>87</b>	<b>75</b>	<b>12</b>	
<b>Operations</b>				
Revenue Management	42	40	2	2 Professional vacancies
Operations (Non-Security)	587	511	76	55 Managerial, 1 Professional, and 20 BTO vacancies
<b>Total Operations</b>	<b>629</b>	<b>551</b>	<b>78</b>	
<b>Maintenance</b>				
Maintenance	190	178	12	2 Managerial, 1 Professional, and 9 Maintainer vacancies
Operations - Maintainers	173	162	11	11 Maintainer vacancies
Internal Security - Tech Svcs	8	8	-	
<b>Total Maintenance</b>	<b>371</b>	<b>348</b>	<b>23</b>	
<b>Engineering/Capital</b>				
Engineering & Construction	181	148	33	17 Managerial and 16 Professional vacancies
Safety & Health	11	9	2	2 Professional vacancies
Law <sup>(1)</sup>	22	21	1	2 Professional vacancies and 1 Managerial overage
CFO-Planning & Budget Capital	23	15	8	3 Managerial and 5 Professional vacancies
<b>Total Engineering/Capital</b>	<b>237</b>	<b>193</b>	<b>44</b>	
<b>Public Safety</b>				
Operations (Security)	232	232	-	
Internal Security - Operations	42	40	2	5 Professional vacancies and 3 Managerial overages
<b>Total Public Safety</b>	<b>274</b>	<b>272</b>	<b>2</b>	
<b>Total Positions</b>	<b>1,598</b>	<b>1,439</b>	<b>159</b>	
Non-Reimbursable	1,511	1,352	159	
Reimbursable	87	87	-	
<b>Total Full-Time</b>	<b>1,598</b>	<b>1,439</b>	<b>159</b>	

(1) Includes Legal and Procurement staff.

(2) Includes Controller and Operating Budget staff.

(3) Includes Human Resources, Labor Relations, and Administration staff.

**MTA BRIDGES AND TUNNELS**  
**JULY FINANCIAL PLAN - 2015 MID-YEAR FORECAST**  
**TOTAL POSITIONS BY FUNCTION AND OCCUPATION**  
**FULL-TIME POSITIONS and FULL-TIME EQUIVALENTS**  
November 2015

	Mid-Year Forecast	Actual	Favorable (Unfavorable) Variance	Explanation of Variances
<b>Administration</b>				
Managers/Supervisors	34	28	6	8 vacancies (7 in CFO and 1 in EEO) and 2 overages (1 in Administration and 1 in Executive)
Professional, Technical, Clerical	53	47	6	6 vacancies in CFO, 1 vacancy in Administration, and 1 overage in Law
Operational Hourlies	-	-	-	
<b>Total Administration</b>	<b>87</b>	<b>75</b>	<b>12</b>	
<b>Operations</b>				
Managers/Supervisors	211	156	55	55 vacancies in Operations
Professional, Technical, Clerical	39	36	3	2 vacancies in Revenue Management and 1 vacancy in Operations
Operational Hourlies <sup>(1)</sup>	379	359	20	20 BTO vacancies in Operations
<b>Total Operations</b>	<b>629</b>	<b>551</b>	<b>78</b>	
<b>Maintenance</b>				
Managers/Supervisors	17	15	2	2 vacancies in Maintenance
Professional, Technical, Clerical	17	16	1	1 vacancy in Maintenance
Operational Hourlies <sup>(2)</sup>	337	317	20	11 Maintainer vacancies in Operations and 9 in Maintenance
<b>Total Maintenance</b>	<b>371</b>	<b>348</b>	<b>23</b>	
<b>Engineering/Capital</b>				
Managers/Supervisors	58	39	19	17 vacancies in Engineering, 3 vacancies in CFO, and 1 overage in Law
Professional, Technical, Clerical	179	154	25	16 vacancies in Engineering, 5 in CFO, 2 in Law, and 2 in Safety and Health
Operational Hourlies	-	-	-	
<b>Total Engineering/Capital</b>	<b>237</b>	<b>193</b>	<b>44</b>	
<b>Public Safety</b>				
Managers/Supervisors	42	46	(3)	3 overages in Internal Security
Professional, Technical, Clerical	33	27	5	5 vacancies in Internal Security
Operational Hourlies <sup>(3)</sup>	199	199	-	
<b>Total Public Safety</b>	<b>274</b>	<b>272</b>	<b>2</b>	
<b>Total Positions</b>				
Managers/Supervisors	362	284	78	
Professional, Technical, Clerical	321	280	41	
Operational Hourlies	915	875	40	
<b>Total Positions</b>	<b>1,598</b>	<b>1,439</b>	<b>159</b>	

(1) Represents Bridge and Tunnel Officers. These positions are paid annually, not hourly.

(2) Represents Maintenance personnel. These positions are paid annually, not hourly.

(3) Represents Bridge and Tunnel Officers performing public safety. These positions are paid annually, not hourly.

**MTA BRIDGES AND TUNNELS**  
**MID-YEAR FORECAST AND NOVEMBER FORECAST vs. ACTUAL RESULTS (NON-REIMBURSABLE)**  
**NOVEMBER 2015 YEAR-TO-DATE**  
**(\$ in millions)**

	<b>November Year-to-Date</b>			<b>Favorable(Unfavorable) Variance</b>			
	Mid-Year Forecast	November Forecast	Actual	Mid-Year Forecast		November Forecast	
	\$	\$	\$	\$	%	\$	%
Total Revenue	1,650.559	1,675.984	1,689.019	38.460	2.3	13.035	0.8
Investment Income	0.128	0.133	0.162	0.034	26.4	0.029	21.4
Total Revenue without Investment Income	<b>1,650.431</b>	<b>1,675.850</b>	<b>1,688.857</b>	<b>38.426</b>	<b>2.3</b>	<b>13.007</b>	<b>0.8</b>
Total Expenses before Non-Cash Liability Adjs	<b>419.961</b>	<b>384.483</b>	<b>372.205</b>	<b>47.756</b>	<b>11.4</b>	<b>12.278</b>	<b>3.2</b>
Depreciation	102.290	102.290	100.668	1.622	1.6	1.622	1.6
Other Post-Employment Benefits	65.692	65.692	65.219	0.473	0.7	0.473	0.7
Environmental Remediation	0.000	0.000	0.000	0.000		0.000	
Total Expenses after Non-Cash Liability Adjs	<b>587.944</b>	<b>552.465</b>	<b>538.092</b>	<b>49.852</b>	<b>8.5</b>	<b>14.373</b>	<b>2.6</b>
Less: Depreciation	102.290	102.290	100.668	1.622	1.6	1.622	1.6
Less: Other Post-Employment Benefits	65.692	65.692	65.219	0.473	0.7	0.473	0.7
<b>Total Expenses</b>	<b>419.961</b>	<b>384.483</b>	<b>372.205</b>	<b>47.756</b>	<b>11.4</b>	<b>12.278</b>	<b>3.2</b>
<b>Net Income/(Deficit)</b>	<b>1,230.598</b>	<b>1,291.501</b>	<b>1,316.814</b>	<b>86.216</b>	<b>7.0</b>	<b>25.313</b>	<b>2.0</b>
<b>Net Income without Investment Income</b>	<b>1,230.469</b>	<b>1,291.367</b>	<b>1,316.652</b>	<b>86.183</b>	<b>7.0</b>	<b>25.285</b>	<b>2.0</b>

Note: Totals may not add due to rounding

**MTA BRIDGES AND TUNNELS**  
**EXPLANATION OF VARIANCES BETWEEN NOVEMBER FORECAST AND ACTUAL RESULTS**  
**NON-REIMBURSABLE**  
**NOVEMBER 2015 YEAR-TO-DATE**  
**(\$ in millions)**

	<b>Favorable/(Unfavorable)</b>		<b>Variance Explanation</b>
	<u>Variance</u>	<u>Percent</u>	
Total Revenue	\$13.035	0.8	Primarily due to increased toll revenue from higher traffic volumes
Total Expenses	\$14.373	3.2	Primarily due to vacancies, lower overtime, and timing of major maintenance projects, and lower bond issuance costs

NOTE: Mid-Year Forecast vs. Actual Variance explanations are provided in the monthly report to the Finance Committee



# **Bridges and Tunnels**

---

---

## **Capital Program Project Status Report December 2015**



MTA BRIDGES & TUNNELS  
CAPITAL PROGRAM  
STATUS REPORT  
DECEMBER 31, 2015

Introduction

This report presents the year's planned versus actual and forecast commitments, completions, and close-outs in narrative, tabular and graphic formats.

2015 Overview

In 2015, Bridges & Tunnels made 130 commitments at a value of \$526.5 million against the approved plan calling for 61 commitments with a total value of \$412.9 million (127.5% of the plan). (See Attachment 1, 2015 Commitment Chart).

The increase of \$113.5 million above the plan was primarily due to unplanned and accelerated commitments against the 2015-2019 Capital Program.

Particularly noteworthy, favorable award variances were realized with the following construction awards (See Attachment 2 – 2015 Major Commitments and Attachment 7 – 2015 Commitment Plan):

**2010-2014 Program:**

- **QMT**, Construction contract awarded for \$230.8 million against a plan of \$248.6 million

**2015-2019 Program:**

- **BW14/BW84** Construction: Miscellaneous Structural Rehabilitation; Cable & Suspender Rope Investigation/Testing; Painting of the Tower Interior Base cells and Struts was awarded for \$47.5 million against a budget of \$61.9 million.

The table below summarizes the 2015 Commitments versus the approved Plan:

<p style="text-align: center;"><b>MTA BRIDGES AND TUNNELS</b>  <b>2015 MILESTONE PERFORMANCE - COMMITMENTS</b>                      Actual 2015 Commitments of \$526.5M were above the Approved Plan by \$113.5M                      (\$ in Millions)</p>				
	<b>2010-2014 Program</b>	<b>2010-2014 Sandy Programs</b>	<b>2015-2019 Program</b>	<b>Total All Programs</b>
<b>2015 Planned Commitments</b>	<b>\$201.2</b>	<b>\$211.8</b>	<b>\$0.0</b>	<b>\$412.9</b>
Commitments not made - Deferred	(\$31.7)	(\$3.3)	\$0.0	(\$35.0)
Decrease in Commitments - Low Bids	(\$26.8)	\$4.3	\$0.0	(\$22.5)
Increase in Commitments - High Bids	\$17.5	\$8.9	\$0.0	\$26.3
Increase in Commitments - Increased Scope/Projects Added	\$10.2	\$2.2	\$132.9	\$145.2
Decrease in Commitments - Decreased Scope	(\$0.5)	\$0.0	\$0.0	(\$0.5)
<b>Actual Commitments vs. Plan</b>	<b>(\$31.4)</b>	<b>\$12.0</b>	<b>\$132.9</b>	<b>\$113.5</b>
<b>2015 Actual Commitments</b>	<b>\$169.8</b>	<b>\$223.8</b>	<b>\$132.9</b>	<b>\$526.5</b>



In 2015, Bridges and Tunnels realized 11 project completions with a value of \$214.8 million against a plan calling for 10 project completions with a value of \$208.5 million. Actual project completions were 3% above the 2015 plan. Major projects completed this year include:

- D604BW15, Installation of Necklace Lighting and Acoustic Monitoring Systems - \$12.5 million
- D601MP06, Substructure and Underwater Scour Protection - \$26.5 million
- D602BW89C – Deck Replacement – Queens Elevated and On-Grade Approach - \$142.5 million

Bridges and Tunnels accomplished \$188.4 million in task level closeouts in 2015 (77 tasks).

### **December 2015**

#### **Commitments**

In the month of December, there were 27 commitments made with a total value of \$194.9 million. The most notable commitments made in December are:

- **D604MPXA, D601MPXB, D607MPXC:**
  - MP03 Ph.II/MP16 – Construction contract for the Rehabilitation of the Programmable Logic Controller & Mechanical Systems, Miscellaneous Steel Repairs, Structural Rehabilitation and Painting - \$77.6 million
- D701BW14, D701BW84, D707BW84:
  - Construction contract for Miscellaneous Structural Rehabilitation; Cable & Suspender Rope Investigation/Testing; Painting of the Tower Interior Base cells and Struts - \$47.5 million
- **D704TN60, D707TN60:**
  - Construction contract for the Installation of an Anchorage Dehumidification System and Structural Painting - \$41.7 million
- **D703AW32:**
  - Construction contract for the Installation of Rotating Prism Signs - \$8.7 million

#### **Completions**

There were no project completions in December:

(See Attachment 3 - 2015 Completion Chart; Attachment 4 – 2015 Major Project Completions; Attachment 5 - 2015 Project Completion Plan).

#### **Close-outs**

There were six task level closeouts in December for \$18.7 million. Year-to-date, there have been 77 task level closeouts with a total value of \$188.4 million. (See Attachment 6 – 2015 Task Level Closeouts).

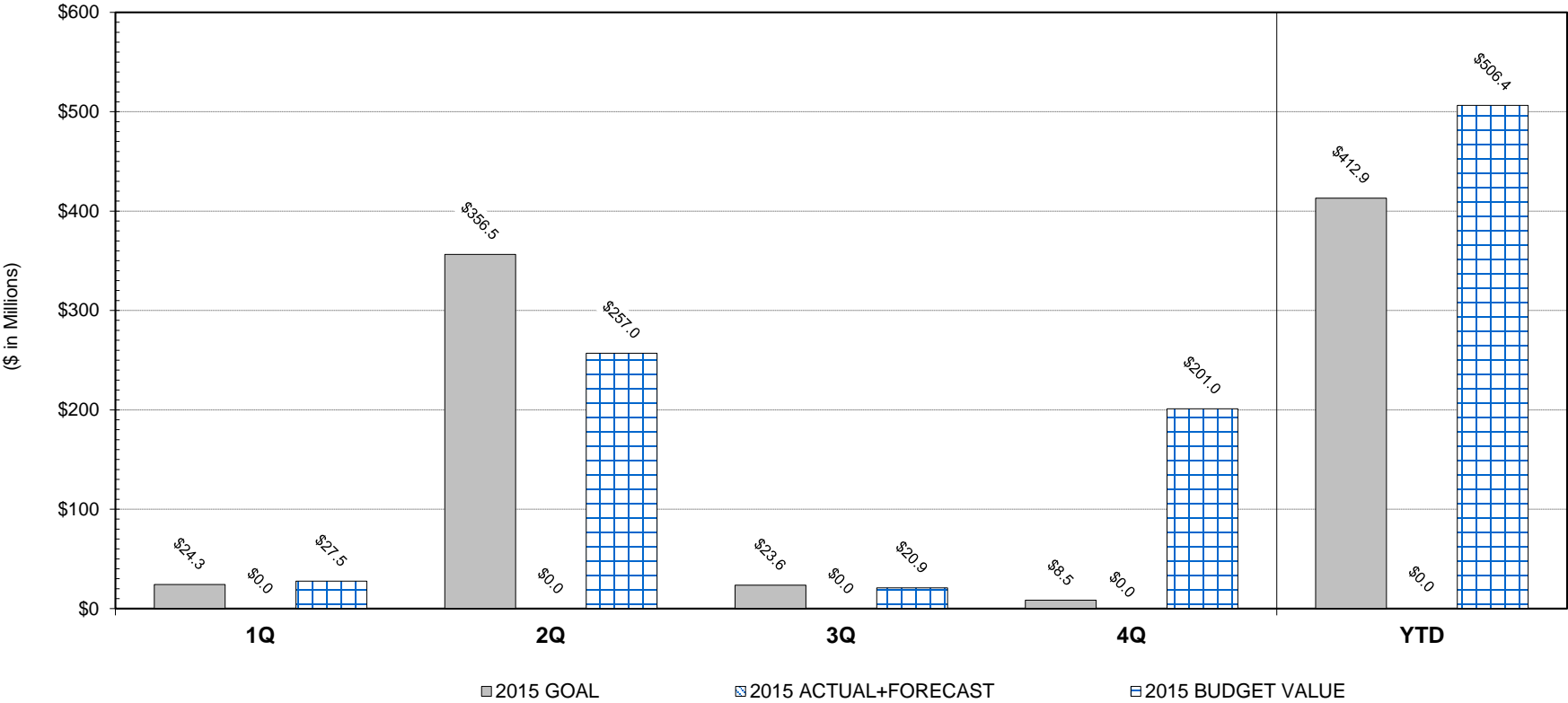
#### **Award Date Changes for Significant Remaining Commitments**

RK75, Interim Repairs-Toll Plaza Deck, Construction Phase II is now forecast for award in January 2016 for \$14.8 million. Low bidder's responsibility issues are being evaluated.

TN49, Suspended Span Replacement Phase A, Laboratory Testing and Fabrication of the Prototype Orthotropic Deck, is now forecast for award in February 2016 for \$8 million. Additional time was required make arrangements for the testing.

**MTA Bridges and Tunnels**  
**Commitments as of December 31, 2015**

2015 Budget Goal:	\$412.9	
2015 Annual Forecast	\$0.0	
YTD Goal:	\$412.9	
YTD Actual:	\$0.0	(.0% of YTD Goal)
YTD Budgeted Value:	\$506.4	(122.6% of YTD Goal)
Left to Commit:	\$0.0	



## MTA Bridges and Tunnels: Status of Major Commitments as of December 31, 2015

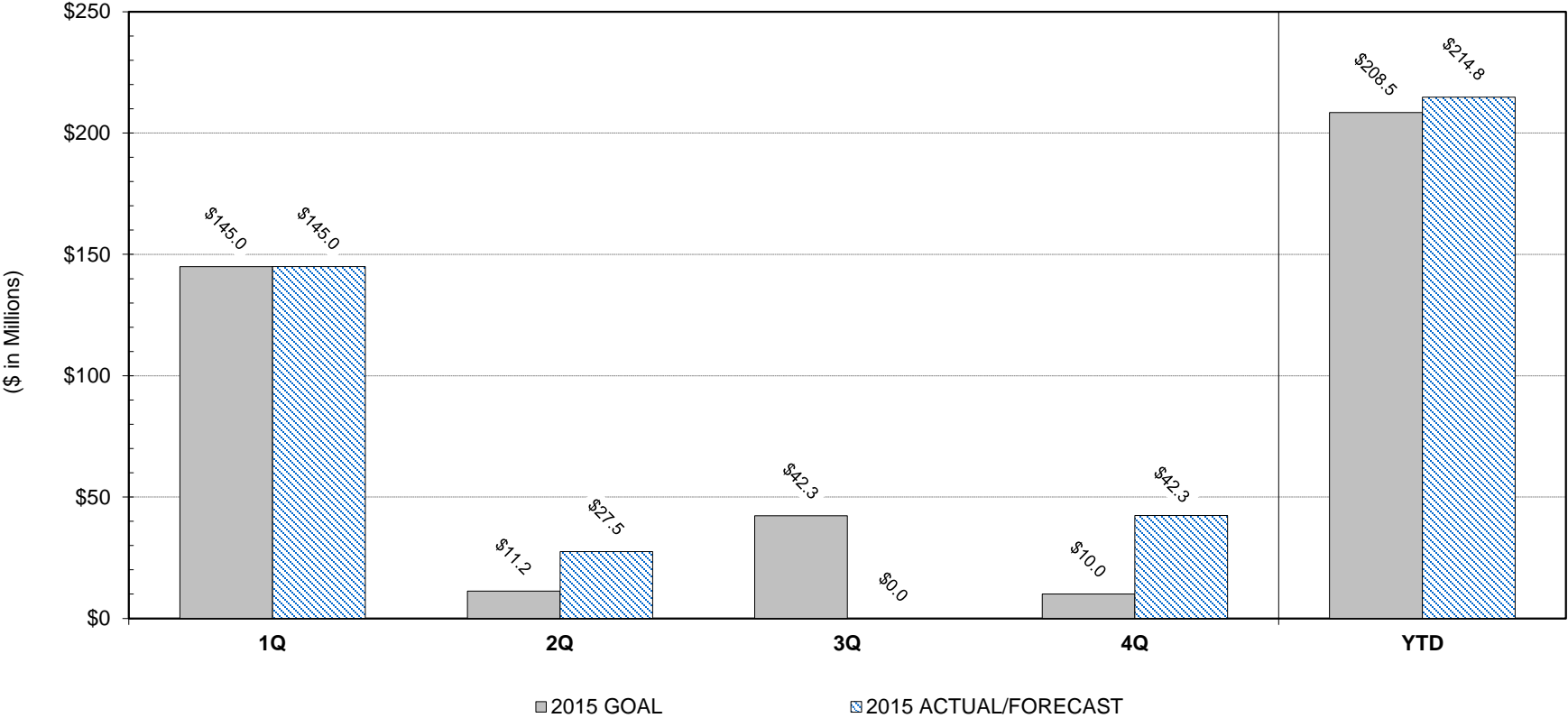
Project		Budget (\$ in Millions)			Award Date			Notes
		2015 Goal	Actual / Forecast*	Budgeted Value	2015 Goal	Advertisement Date	Actual / Forecast	
D601QM40	Tunnel Wall and Ceiling Repairs and Leak Control - Construction Phase I	\$62.0	\$36.8	\$62.0	Apr-15	Nov-14	Apr-15	A
ED010240	Restore Queens Midtown Tunnel - Structural - Construction	\$100.1	\$87.6	\$100.1	Apr-15	Nov-14	Apr-15	A
ED040281	Restore QMT Cntrl/Comm Sys, CCTV,Traffic Signals - Construction	\$54.0	\$90.8	\$54.0	Apr-15	Nov-14	Apr-15	A
ED050203	Queens Midtown Tunnel Environmental Cleanup - Construction Phase II	\$24.1	\$7.5	\$24.1	Apr-15	Nov-14	Apr-15	A
D602RKXD	Construction of New Harlem River Drive Ramp - MOU (RK23)	\$15.0	\$0.0	\$15.0	Jun-15	N/A	Dec-16	F 1
D601MPXB	Miscellaneous Steel Repairs & Structural Rehabilitation - Construction (MP16)	\$21.8	\$22.9	\$21.8	Jun-15	Jul-15	Dec-15	A 2
D607MPXC	Painting of MPB Roadway Structures - Construction (MP16P)	\$17.0	\$22.7	\$17.0	Jun-15	Jul-15	Dec-15	A 2
D604MPXA	Rehab. of Programmable Logic Controller & Mech. System - Construction (MP03-Ph II)	\$24.3	\$32.0	\$24.3	Jun-15	Jul-15	Dec-15	A 2

Note 1: Additional time is required to negotiate the terms of contract with New York City DOT and their contractor. Start forecast revised to December 2016 for better coordination with the City and contractor.

Note 2: Additional time was required to revise Procurement Approval Documents.

**MTA Bridges and Tunnels**  
**Completions as of December 31, 2015**

2015 Budget Goal:	\$208.5
2015 Annual Forecast:	\$214.8
YTD Goal:	\$208.5
YTD Actual:	\$214.8 (103.0% of YTD Goal)
Left to Complete:	\$0.0



## MTA Bridges and Tunnels: Status of Major Completions as of December 31, 2015

Project	Budget (\$ in Millions)		Completions Status		Completion Date			Notes
	2015 Goal	Actual / Forecast*	Physical % Complete	% Contingency Spent	2015 Goal	Actual / Forecast		
D604BW15 Necklace Lighting	\$12.5	\$12.5	93%	94%	Jul-15	Nov-15	A	1
D601MP06 Substructure & Underwater Scour Protection	\$26.5	\$26.5	99%	69%	Jul-15	Oct-15	A	2
D602BW89C Deck Replacement - Elevated and On Grade Approach	\$142.5	\$142.5	99%	54%	Jan-15	Jan-15	A	

\* Forecast is equal to the project's most recently validated estimate at completion (EAC).

Note 1: The severe 2014-2015 winter weather conditions and additional work required to replace existing luminaires with more efficient LED fixtures.

Note 2: Additional work is required due to site conditions.

**MTA BRIDGES & TUNNELS  
CAPITAL PROGRAM  
2015 PROJECT COMPLETIONS**

Project ID (ACEP)	Project Description	Type	Goal End Date	Goal Value	Budgeted Value	Actual End Date	Actual Value	Forecast End Date	Forecast Value
D602BW89C	Deck Replacement - Elevated and On Grade Approach	Project	Jan-15	\$142,452,247	\$142,452,247	Jan-15	\$142,452,247	Apr-16	
			<b>Jan-15 Total</b>	\$142,452,247	\$142,452,247				
D601MP16	Miscellaneous Steel Repairs	Design	Mar-15	\$2,512,355	\$2,512,355	Mar-15	\$2,512,355		
			<b>Mar-15 Total</b>	\$2,512,355	\$2,512,355				
D601TN60	Anchorage Dehumidification	Design	Apr-15	\$3,297,137	\$3,297,137	Apr-15	\$3,297,137		
			<b>Apr-15 Total</b>	\$3,297,137	\$3,297,137				
ED010209	Restore VNB Tower Base Electrical/Lighting System & Pedestrian Access	Project	May-15	\$1,794,604	\$1,794,604	Apr-15	\$1,794,604		
			<b>May-15 Total</b>	\$1,794,604	\$1,794,604				
D601RK19	Seismic and Wind Study	Study	Jun-15	\$6,097,047	\$6,097,047	Jun-15	\$6,097,047		
			<b>Jun-15 Total</b>	\$6,097,047	\$6,097,047				
D604BW15	Necklace Lighting	Project	Jul-15	\$12,472,013	\$12,472,013	Nov-15	\$12,472,013		
D601MP06	Substructure & Underwater Scour Protection	Project	Jul-15	\$26,499,451	\$26,499,451	Oct-15	\$26,499,451		
			<b>Jul-15 Total</b>	\$38,971,463	\$38,971,463				
D601BW07	Tower and Pier Fender Protection-Phase 1	Study	Sep-15	\$3,308,868	\$3,308,868				
			<b>Sep-15 Total</b>	\$3,308,868	\$3,308,868				
D601HH89	Skewbacks Retrofit **	Design	Oct-15	\$5,730,000	\$5,730,000				
			<b>Oct-15 Total</b>	\$5,730,000	\$5,730,000				
D604QM81	Controls / Communication System**	Design	Nov-15	\$4,305,012	\$4,305,012				
			<b>Nov-15 Total</b>	\$4,305,012	\$4,305,012				
<b>Unplanned Completions</b>									
D601BW14	Miscellaneous Structural Rehabilitation	Design				Apr-15	\$3,633,485		
D601BW84	Cable Investigation/Monitoring	Design				Apr-15	\$2,815,652		
D603AW36	Installation of CCTV/Fiber Optics	Project				Jun-15	\$9,866,294		
D601AW98	Feasibility Study: BBT/QMT Improve/Modernize	Study				Oct-15	\$3,365,889		
<b>Grand Total</b>				<b>\$208,468,734</b>	<b>\$208,468,734</b>	<b>Total</b>	<b>\$214,806,174</b>	<b>Remaining</b>	<b>\$0</b>

\* Forecast is equal to the project's most recently validated estimate at completion (EAC).

\*\* Project is now planned as Design-Build therefore the forecast completion date will not be achieved in 2015.

**MTA BRIDGES & TUNNELS  
CAPITAL PROGRAM  
2015 TASK LEVEL CLOSEOUTS**

PROJECT	PROJECT DESCRIPTION	TASK	TASK DESCRIPTION	CLOSEOUT WAR	CERTIFICATE DATE	CERTIFICATE AMOUNT
D503HH85	Upper Level Toll Plaza Deck	D01846	Design (PSC-04-2726)	D00000980	Jan-15	\$3,737,893.67
D607VN88	Tower Painting - Below Roadway Level	D02808	Paint. Const.Adm(PSC-09-2861)	D00001282	Mar-15	\$2,456,146.77
D306AW22	Miscellaneous	D00809	Endispute Contract	D00000337	Mar-15	\$0.00
D403AW41	Toll Registry Systems Replacem	D02114	AW41G-Prtal LnCtl UpgrdesPSC05-2756	D00001021	Mar-15	\$1,534,990.00
D602RK73	Deck Replacement- RFK MQ Ramp	D03174	Operations F/A(TBTA-D1555)	D00001555	Mar-15	\$0.00
D503AW52	Adv. Automated Traffic Detect.	D02337	AW52C-PM Scope Dev. F/A(TBTA-D1173)	D00001173	Apr-15	\$0.00
D602BW89	Deck Replacement - Elevated and On Grade Approach	D02599	Queens DPR Mitigation PhI - Trees	D00001402	May-15	\$1,100,500.00
D607TN87	Paint - Bronx and Queens Tower Fender Systems	D02757	Paint. CM (PSC-09-2854)	D00001275	May-15	\$937,174.57
D502TN50	Replace Concrete Deck	D02060	Constr. Adm (PSC-07-2823)	D00001156	May-15	\$3,078,918.33
D501TN87	Anchorage and Tower Protection	D02074	Const.Adm(PSC-09-2854)	D00001245	May-15	\$1,026,960.22
D606AW18	Protective Liability Insurance	D02448	1/1/2011 - 6/1/2011 AAPL	D00001317	May-15	\$424,867.00
D606AW18	Protective Liability Insurance	D02449	06/2011- 06/2012 APPL	D00001386	May-15	\$1,664,198.00
D606AW18	Protective Liability Insurance	D02450	06/2012-06/01/2013 APPL	D00001493	May-15	\$1,204,482.00
D606AW18	Protective Liability Insurance	D02451	06/2013-06/01/2014 APPL	D00001557	May-15	\$690,217.00
D606AW18	Protective Liability Insurance	D02452	06/2014 -06/01/2015 AAPL	D00001664	May-15	\$1,162,895.00
D502TN50	Replace Concrete Deck	D02061	Construction	D00001174	Jun-15	\$60,994,845.56
D503AW48	2nd Generation E-Zpass In-Lane	D02301	AW48G-ETC Systm Comp Upgrd-Toll Gat	D00001144	Jun-15	\$588,829.61
D501BW84	Cable and Anchorage Investigat	D01823	BW84A-PM Design F/A(TBTA-D999)	D00000999	Jul-15	\$641,097.44
D601TN52	Miscellaneous Structural Rehabilitation	D02731	PM Construction F/A(TBTA-D1371)	D00001371	Jul-15	\$203,620.97
D601BB28	Rehab. Walls, Roadway, Firelines, Ceiling Repair	D02558	PM Design F/A(TBTA-D1484)	D00001484	Jul-15	\$472,611.94
D601QM18	Entrance and Exit Plazas Structural Rehabilitation	D02665	PM Design F/A(TBTA-D1370)	D00001370	Jul-15	\$570,205.36
D601CB09	Substructure & Underwater Work	D02608	PM Construction F/A(TBTA-D1272)	D00001272	Jul-15	\$733,628.69
D505QM01	Service & FE Building Rehab	D02921	PM Design F/A(TBTA-D1450)	D00001450	Jul-15	\$408,265.78
D602RK65	Deck Replacement - Bronx/Manhattan Ramps/TollPlaza	D03134	RK65B - BC Devlpmnt F/A(TBTA-D1561)	D00001561	Jul-15	\$19,570.38
ED010228	Restore Hugh L. Carey Tunnel - Structural	E02045	PM Design F/A(TBTA-E1412)	E00001412	Jul-15	\$718,449.67
ED020202	Restore Hugh L. Carey Tunnel Roadway	E02063	PM Design F/A(TBTA-E1420)	E00001420	Jul-15	\$0.00
ED040243	Restore Hugh L. Carey Tunnel Utilities	E02176	PM Design F/A(TBTA-E1418)	E00001418	Jul-15	\$3,419.83
ED050221	Restore Hugh L. Carey Tunnel Vent Bldgs	E02217	PM Design F/A(TBTA-E1416)	E00001416	Jul-15	\$53,418.87
ED040281	Restore QMT Cntrl/Comm Sys, CCTV,Traffic Signals	E02184	PM Design F/ATBTA-E1413)	E00001413	Jul-15	\$90,194.49
D405BB43	Rehab Battery Parking Garage	D02950	BB43 IVA-Elev PM Const F/A (TBTA-D1492)	D00001492	Aug-15	\$247,968.06
D607HH10	Paint-Curb Stringers	D02621	Paint PM Construction F/A (TBTA-D1301)	D00001301	Aug-15	\$12,698.40
D602HH10	Upper Level Sidewalk/ Curb Stringers	D02619	Operations F/A (TBTA-D1313)	D00001313	Aug-15	\$137,964.26
D601RK76	Miscellaneous Structural Repair	D03078	BC Development F/A (TBTA-D1456)	D00001456	Aug-15	\$9,628.52

**MTA BRIDGES & TUNNELS  
CAPITAL PROGRAM  
2015 TASK LEVEL CLOSEOUTS**

PROJECT	PROJECT DESCRIPTION	TASK	TASK DESCRIPTION	CLOSEOUT WAR	CERTIFICATE DATE	CERTIFICATE AMOUNT
D603AW57	Advanced Traffic Management Systems	D02888	BC Development F/A (TBTA-D1382)	D00001382	Aug-15	\$14,719.00
D402BB28	Rehab Tunnel Walls Roadway & Drainage	D02371	PM Scope Dev and Design F/A (TBTA-D1206)	D00001206	Aug-15	\$541,242.24
D505TB57	Tenant Relocation/ New Building	D02832	Survey of 5 Boro Shops- PSC-06-2807C	D00001285	Aug-15	\$15,023.86
D501BW84	Cable and Anchorage Investigation	D02406	Statistican Services (PSC-06-2807E)	D00001222	Aug-15	\$84,724.65
D504AW80	Variable Message Signs	D02842	Study-VMS Gantry QMT (PSC-06-2807C)	D00001295	Aug-15	\$34,372.55
ED020203	Restore Queens Midtown Tunnel Roadway	E02116	PM Design F/A (TBTA-E1419)	E00001419	Aug-15	\$0.00
ED010240	Restore Queens Midtown Tunnel-Structural	E02054	PM Design F/A (TBTA-E1414)	E00001414	Aug-15	\$318,372.59
ED050203	Queens Midtown Tunnel Environmental Cleanup	E02201	PM Design F/A (TBTA-E1417)	E00001417	Aug-15	\$62,200.94
ED040208	Replace MPB Navigation& Security Lighting System	E02166	SBMP Construction MP-99S	E00001680	Aug-15	\$670,131.15
D503AW52	Adv. Automated Traffic Detect.	D02116	AW52APM Const F/A Trnsmt (TBTA-d1018)	D00001018	Sep-15	\$440,471.05
D504AW80	Variable Message Signs	D01951	PM Design F/A (TBTA-D1110)	D00001110	Sep-15	\$416,703.94
D606AW21	Program Administration	D02461	2014 Program Administration (TBTA-D1634)	D00001634	Sep-15	\$459,460.16
D606AW21	Program Administration	D02462	2014 Indirect Prog Adm (TBTA-D1633)	D00001633	Sep-15	\$1,839,744.94
D605BB43	Misc. Repairs at BP Garage	D03052	PM Design F/A (TBTA-D1490)	D00001490	Sep-15	\$246,036.09
D605BB43	Misc. Repairs at BP Garage	D03054	PM Construction F/A (TBTA-D1636)	D00001636	Sep-15	\$70,790.97
D601MP06	Substructure & Underwater Scour Protection	D02644	PM Design F/A (TBTA-D1273)	D00001273	Sep-15	\$977,212.16
D601MP21	Rehabilitate Rockaway Point Blvd Overpass	D02653	PM Design F/A (TBTA-D1426)	D00001426	Sep-15	\$398,964.75
D602RK65	Deck Replacement-Bronx /Manhattan Ramps/Toll Plaza	D02698	RK65A-PM Design F/A (TBTA-D1368)	D00001368	Sep-15	\$1,032,299.68
D602RK75	Interim Repair- Toll Plaza Deck	D03133	PM Construction F/A Ph 1 (TBTA-D1536)	D00001536	Sep-15	\$102,788.39
D601VN35	Steel Repair & Concrete Rehab. & Drainage Systems	D02770	PM Design F/A (TBTA-D1459)	D00001459	Sep-15	\$89,576.56
D601HH07	Structural Rehabilitation- Phase 1	D02612	PM Construction F/A (TBTA-D1431)	D00001431	Sep-15	\$431,503.42
D601MP06	Substructure & Underwater Scour Protection	D03166	SBMP-MP06A-Const-North Abutment	D00001621	Sep-15	\$670,191.87
D601HH07	Structural Rehabilitation- Phase 1	D02613	Construction	D00001436	Sep-15	\$6,569,918.56
D602RK73	Deck Replacement-RFK MQ Ramp	D02975	Design/Build Construction (MQ Ramp)	D00001487	Oct-15	\$48,697,214.41
D602BB54	Replacement Brooklyn Plaza Structural Slab	D02570	PM Design F/A (TBTA-D1461)	D00001461	Oct-15	\$654,765.15
ED010209	Restore VNB Twr BaseElect/Lightg Sys+Pedestrian Ramp	E02037	Constructio GFM-495D, WO#76	E00001527	Oct-15	\$880,491.50
ED040208	Replace MPB Navigation & Security Lighting Systems	E02164	PM Construction F/A(TBTA-E1709)	E00001709	Oct-15	\$48,380.95
D606AW28	Scope Development	D03008	MP Seismic Study ( PSC-06-2807C WO#40)	D00001474	Oct-15	\$346,123.25
D502VN80	Rehab Deck on Suspended Spans	D02986	VN80B Additional Wind Study ( PSC-06-2807C)	D00001414	Oct-15	\$128,488.95
D504AW80	Variable Message Signs	D02852	Design-VMS 2nd Ave QMT (PSC-06-2807C)	D00001307	Oct-15	\$26,507.76
D503HH85	Upper Level Toll Plaza Deck	D02936	Indep. Design Review (PSC-06-2807C WO35)	D00001351	Nov-15	\$255,627.98
D606AW22	Miscellaneous	D03161	MP-03-VE (PSC-06-2807C) Task #47	D00001560	Nov-15	\$54,895.19
D602HH10	Upper Level Sidewalk/ Curb Stringers	D02616	PM Const F/A (TBTA-D1274)	D00001274	Nov-15	\$917,582.83



**MTA BRIDGES & TUNNELS  
CAPITAL PROGRAM  
2015 TASK LEVEL CLOSEOUTS**

PROJECT	PROJECT DESCRIPTION	TASK	TASK DESCRIPTION	CLOSEOUT WAR	CERTIFICATE DATE	CERTIFICATE AMOUNT
D402TB65	Deck Replacement Manhattan Plaza & Ramp	D01303	Design (PSC-02-2667X)	D00000898	Nov-15	\$15,109,528.07
ED010228	Restore Hugh L. Carey Tunnel-Structural	E02989	SBMP-BB28X2-Remove Ceiling Tile	E00001897	Nov-15	\$548,000.00
D607VN88	Tower Painting-Below Roadway Level	D02810	Paint-PM Const F/A (TBTA-D1280)	D00001280	Nov-15	\$752,947.68
D601BW97	Concrete Anchorage Repairs	D02604	PM Const F/A-BW97B (TBTA-D1498)	D00001498	Nov-15	\$867,537.42
D403AW80	VMS & Gantry Installation	D02156	Dsgn-VMS-Ph 1-TN#06-04(PSC-03-2697A)	D00001049	Nov-15	\$58,477.81
D503AW48	2nd Generation E-Zpass In-lane equip.	D01933	AW48B - PM Design F/A-Test Lane	D00001095	Dec-15	\$885,137.20
D602RK75	Interim Repairs-Toll Plaza Deck	D02717	PM Design F/A (TBTA-D1361)	D00001361	Dec-15	\$590,670.38
D405BB43	Rehab. Battery Tunnel Garage	D02953	BB43IVA - Elevator Constr.	D00001512	Dec-15	\$2,784,045.07
D602RK65	Deck Repl. - Bx/Mahn. Ramps	D02692	RK65D - Constr. Utility Relocation & Upgrade	D00001377	Dec-15	\$13,280,361.40
G5140109	08PSGP TN Elect.Security	G03162	Design & CSS RFK, BW PSC-11-2904	G00002372	Dec-15	\$1,101,182.98
ED050202	Hugh L.Carey Tunnel Environmental Cleanup	E02194	PM Design F/A (TBTA-E1847)	D00001847	Dec-15	\$26,866.42
				<b>Total</b>	<b>77</b>	<b>\$188,426,942.31</b>

**MTA BRIDGES & TUNNELS  
CAPITAL PROGRAM  
2015 CAPITAL MILESTONE BACK-UP - PROJECT AWARDS**

ACEP	Project Description	IMPACT Task	Task Description	Goal Start Date	Goal Value	Budget Value	Actual Start Date	Actual Value	Forecast Start Date	Forecast Value
D602MP21	Rehabilitate Rockaway Point Blvd	D03210	Design/Build	Jan-15	\$8,495,550	\$8,495,550	Jan-15	\$8,495,550		
D601QM18	Entrance and Exit Plazas Structural Rehabilitation	D02947	Design During Cns.(PSC-10-2890)	Jan-15	\$417,965	\$417,965	Jan-15	\$417,965		
D602VN80	Replace Upper Level Suspended Span	D03291	Operations F/A	Jan-15	\$572,000	\$572,000	Jan-15	\$572,000		
				<b>Jan-15 Total</b>	<b>\$9,485,515</b>	<b>\$9,485,515</b>				
D602VN03	Toll Plaza - East & West Bound Ramps Improvements	D03281	Incentive for Early Completion	Feb-15	\$1,335,000	\$1,335,000	Feb-15	\$1,335,000		
D606AW22	Miscellaneous	D03290	BCOR Review- HH88B	Feb-15	\$138,600	\$138,600	Feb-15	\$111,488		
ED010228	Restore Hugh L. Carey Tunnel - Structural	E02988	SBMP-BB28X1-Tunnel Vent Doors	Feb-15	\$1,173,910	\$1,173,910	Jun-15	\$817,950		
D602HH88	Replace Upper & Lower Level Plza & Southbnd. Appr.	D03238	ORT-Gantry Installation	Feb-15	\$9,365,306	\$9,365,306	Feb-15	\$9,365,306		
D602MP21	Rehabilitate Rockaway Point Blvd	D02997	Dsgn During Cns.	Feb-15	\$158,845	\$158,845				
ED010240	Restore Queens Midtown Tunnel - Structural	E02990	SBMP-QM40X2-Remove Ceiling Tiles	Feb-15	\$2,500,000	\$2,500,000	Mar-15	\$1,889,609		\$0
				<b>Feb-15 Total</b>	<b>\$14,671,661</b>	<b>\$14,671,661</b>				
D606AW22	Miscellaneous	D03289	BCOR Review- HH89	Mar-15	\$165,000	\$165,000	Feb-15	\$160,665		
				<b>Mar-15 Total</b>	<b>\$165,000</b>	<b>\$165,000</b>				
D601QM18	Entrance and Exit Plazas Structural Rehabilitation	D02669	Constr.- Ph.1 Manhattan	Apr-15	\$7,395,819	\$7,395,819	Apr-15	\$7,395,819		
D601QM18	Entrance and Exit Plazas Structural Rehabilitation	D03273	Operations F/A	Apr-15	\$30,850	\$30,850	Apr-15	\$30,850		
D601QM40	Tunnel Wall and Ceiling Repairs and Leak Control	D03270	TEA Services (MOU-08-33)	Apr-15	\$853,710	\$853,710	May-15	\$379,389		
D601QM40	Tunnel Wall and Ceiling Repairs and Leak Control	D02680	Const. - Ph.1	Apr-15	\$62,000,000	\$62,000,000	Apr-15	\$36,783,538		
D601RK23	Miscellaneous Rehab - Manhattan Approach Ramps	D03046	NYC Traffic Enforcmnt Support (TEA)	Apr-15	\$1,500,000	\$1,500,000	Jul-15	\$1,500,000		
ED050203	Queens Midtown Tunnel Environmental Cleanup	E02308	Construction Ph II	Apr-15	\$24,054,693	\$24,054,693	Apr-15	\$7,467,557		
D601QM40	Tunnel Wall and Ceiling Repairs and Leak Control	D03271	Operations F/A	Apr-15	\$280,000	\$280,000	Apr-15	\$280,000		
ED040281	Restore QMT Cntrl/Comm Sys, CCTV,Traffic Signals	E02189	Construction	Apr-15	\$53,957,106	\$53,957,106	Apr-15	\$90,754,179		
ED010240	Restore Queens Midtown Tunnel - Structural	E02057	Construction	Apr-15	\$100,085,134	\$100,085,134	Apr-15	\$87,598,064		
ED020203	Restore Queens Midtown Tunnel Roadway	E02121	Construction	Apr-15	\$1,109,780	\$1,109,780	Apr-15	\$793,468		
ED010240	Restore Queens Midtown Tunnel - Structural	E02399	TEA Services for Tube Closures	Apr-15	\$3,240,177	\$3,240,177	Mar-15	\$1,750,735		
ED010240	Restore Queens Midtown Tunnel - Structural	E02478	Maintenance F/A	Apr-15	\$1,010,000	\$1,010,000	Apr-15	\$1,080,000		
				<b>Apr-15 Total</b>	<b>\$255,517,270</b>	<b>\$255,517,270</b>				
ED010304	Queens Midtown Tunnel Mitigation-Flood Gates&Other	E03431	Construction - Backflow Preventer Installation	May-15	\$500,000	\$500,000	Jul-15	\$771,677		
ED050301	Flood Mitigation-Backup Communication Room	E02787	Construction	May-15	\$4,743,353	\$4,743,353	Aug-15	\$6,087,375		
ED050301	Flood Mitigation-Backup Communication Room	E03355	Const. Adm.	May-15	\$750,000	\$750,000	Jun-15	\$809,310		
ED050301	Flood Mitigation-Backup Communication Room	E03356	PM Const. F/A	May-15	\$250,000	\$250,000	Jun-15	\$367,751		
				<b>May-15 Total</b>	<b>\$6,243,353</b>	<b>\$6,243,353</b>				
D604MP03	Programmable Logic Controller & Mechanical Rehab.	D03203	Ph1 D/B- Const. Adm(PSC13-2923F wo102)	Jun-15	\$400,000	\$400,000	Jul-15	\$258,348		
ED040207	Replace MPB Electrical Equipmt at North Abutment	E02158	Const. Adm.	Jun-15	\$263,824	\$263,824	Jul-15	\$155,126		
ED040207	Replace MPB Electrical Equipmt at North Abutment	E03469	Const.Adm.-SI	Jun-15	\$0	\$0	Jul-15	\$103,223		
ED040210	Repl CBB Mech&Elect Equip-S. Abutment & Svc Bldg	E02172	Const. Adm.	Jun-15	\$758,838	\$758,838	Jul-15	\$413,474		
ED040210	Repl CBB Mech&Elect Equip-S. Abutment & Svc Bldg	E03462	Const.Adm.-SI	Jun-15	\$0	\$0	Jul-15	\$103,223		
D604MP03	Programmable Logic Controller & Mechanical Rehab.	D03202	Ph1-Cnst PM D/B F/A(TBTA-D1758)	Jun-15	\$350,000	\$350,000	Jul-15	\$159,416		
ED040207	Replace MPB Electrical Equipmt at North Abutment	E02157	PM Design/Build F/A	Jun-15	\$212,250	\$212,250	Jul-15	\$184,200		
ED040210	Repl CBB Mech&Elect Equip-S. Abutment & Svc Bldg	E02171	PM Design/Build F/A	Jun-15	\$138,000	\$138,000	Jul-15	\$245,600		

**MTA BRIDGES & TUNNELS  
CAPITAL PROGRAM  
2015 CAPITAL MILESTONE BACK-UP - PROJECT AWARDS**

				Goal			Actual		Forecast	
ACEP	Project Description	IMPACT Task	Task Description	Start Date	Goal Value	Budget Value	Start Date	Actual Value	Start Date	Forecast Value
D604MP03	Programmable Logic Controller & Mechanical Rehab.	D03286	Ph1-Design During Cns.	Jun-15	\$150,000	\$150,000	Dec-15	\$26,782		
ED040207	Replace MPB Electrical Equipmt at North Abutment	E03429	Design during construction	Jun-15	\$160,000	\$160,000			Jan-16	
ED040210	Repl CBB Mech&Elect Equip-S. Abutment & Svc Bldg	E03427	Design during construction	Jun-15	\$300,000	\$300,000			Jan-16	
ED050201	Restore CBB Service Bldg	E03354	Const. Adm.	Jun-15	\$350,000	\$350,000			-	
ED050201	Restore CBB Service Bldg	E03430	PM Design/Build F/A	Jun-15	\$200,000	\$200,000			-	
ED050201	Restore CBB Service Bldg	E03428	Design during construction	Jun-15	\$175,000	\$175,000			-	
ED040303	Flood Mitigation-Generator at GIVB	E03433	Construction	Jun-15	\$3,072,462	\$3,072,462	Dec-15	\$4,077,250		
ED040303	Flood Mitigation-Generator at GIVB	E03435	PM Const. F/A	Jun-15	\$120,000	\$120,000	Jul-15	\$200,000		
ED040303	Flood Mitigation-Generator at GIVB	E03434	Design during construction	Jun-15	\$75,000	\$75,000				
D602RKXD	Construction of New Harlem River Drive Ramp	D03298	Misc - NYC DOT Foundation - MOU	Jun-15	\$14,992,202	\$14,992,202			Dec-16	
D604MPXA	Rehabilitation of Programmable Logic Controller & Mechanical System	D03312	MP03-Ph 2- CSS	Jun-15	\$1,500,000	\$1,500,000	Jul-15	\$1,259,971		
D601MPXB	Miscellaneous Steel Repairs & Structural Rehabilitation	D03317	MP16-CSS	Jun-15	\$1,329,000	\$1,329,000	Oct-15	\$676,139		
D607MPXC	Painting of MPB Roadway Structures	D03322	MP16P-CSS	Jun-15	\$250,000	\$250,000	Oct-15	\$41,382		
D604MPXA	Rehabilitation of Programmable Logic Controller & Mechanical System	D03311	MP03-Ph 2-Constr. Adm.	Jun-15	\$2,425,000	\$2,425,000	Oct-15	\$2,476,190		
D601MPXB	Miscellaneous Steel Repairs & Structural Rehabilitation	D03316	MP16-Constr.Adm.	Jun-15	\$2,180,000	\$2,180,000	Oct-15	\$2,354,072		
D607MPXC	Painting of MPB Roadway Structures	D03321	MP16P-Constr.Adm.	Jun-15	\$2,300,000	\$2,300,000	Oct-15	\$2,379,452		
D604MPXA	Rehabilitation of Programmable Logic Controller & Mechanical System	D03310	MP03-Ph 2-Construction	Jun-15	\$24,255,000	\$24,255,000	Dec-15	\$31,980,262		
D601MPXB	Miscellaneous Steel Repairs & Structural Rehabilitation	D03315	MP16-Construction	Jun-15	\$21,800,000	\$21,800,000	Dec-15	\$22,889,762		
D607MPXC	Painting of MPB Roadway Structures	D03320	MP16P-Construction	Jun-15	\$17,000,000	\$17,000,000	Dec-15	\$22,738,840		
				Jun-15 Total	\$94,756,576	\$94,756,576				
D604MP03	Programmable Logic Controller & Mechanical Rehab.	D03188	Ph1-Design/Build-Generator	Sep-15	\$2,500,470	\$2,500,470	Nov-15	\$4,671,150		
ED040207	Replace MPB Electrical Equipmt at North Abutment	E02159	Design/Build	Sep-15	\$3,675,000	\$3,675,000	Nov-15	\$6,448,250		
ED040210	Repl CBB Mech&Elect Equip-S. Abutment & Svc Bldg	E02173	Design/Build	Sep-15	\$6,300,000	\$6,300,000	Nov-15	\$9,521,400		
D604MP03	Programmable Logic Controller & Mechanical Rehab.	D03201	Ph1-D/B Stipend	Sep-15	\$50,400	\$50,400			Jan-16	
ED050201	Restore CBB Service Bldg	E02003	Ph 2a - Construction	Sep-15	\$1,600,000	\$1,600,000			-	
ED050201	Restore CBB Service Bldg	E02004	Ph 3 - Construction	Sep-15	\$1,000,000	\$1,000,000			-	
D602TN49	Suspended Span Replacement - Phase A	D03212	Lab.Prototype Orthotropic Deck Test	Sep-15	\$8,000,000	\$8,000,000			Feb-16	
D602TN49	Suspended Span Replacement - Phase A	D03330	Prototype Orthotropic Deck Fabrication	Sep-15	\$0	\$0			Feb-16	
D602TN49	Suspended Span Replacement - Phase A	D02727	Construction Adm./ CSS for fabrica.	Sep-15	\$500,000	\$500,000	Sep-15	\$924,386		
				Sep-15 Total	\$23,625,870	\$23,625,870				
D602RK75	Interim Repairs - Toll Plaza Deck	D02721	Construction Ph II	Nov-15	\$8,474,215	\$8,474,215			Feb-16	
				Nov-15 Total	\$8,474,215	\$8,474,215				
				Grand Total	\$412,939,459	\$412,939,459				
Unplanned Commitments										
D602VN80	Replace Upper Level Suspended Span	D02784	VN80C-TEA Support	Feb-15		\$57,675	Feb-15	\$57,675		
D606AW15	MTA Independent Engineering Consultant	D03324	2015 IEC McK.Group Opt Yr4	Feb-15		\$1,262,071	Feb-15	\$1,262,071		
D601RK76	Miscellaneous Structural Repair	D03085	RK76 CSS (PSC-13-2844A WO#1)	Apr-15		\$100,553	Apr-15	\$100,553		
D602BB54	Replacement Brooklyn Plaza Structural Slab	D03257	Operations F/A(TBTA-D1740)	Apr-15		\$275,477	Apr-15	\$275,477		
D601BW97	Concrete Anchorage Repairs	D03272	Construction (Equip.Protection)BW89	May-15		\$391,000	May-15	\$391,000		

**MTA BRIDGES & TUNNELS  
CAPITAL PROGRAM  
2015 CAPITAL MILESTONE BACK-UP - PROJECT AWARDS**

ACEP	Project Description	IMPACT Task	Task Description	Goal Start Date	Goal Value	Budget Value	Actual Start Date	Actual Value	Forecast Start Date	Forecast Value
D601TN52	Miscellaneous Structural Rehabilitation	D03334	Design (TN-52A) PSC-12-2891L Task #49	May-15		\$296,010	May-15	\$296,010		
D606AW22	Miscellaneous	D03336	VE-HH89 Technical Rev PSC12-2891E-wo58	May-15		\$209,694	May-15	\$209,694		
D606AW22	Miscellaneous	D03335	VE-HH89 Design ReviewPSC122891A WO57	May-15		\$209,998	May-15	\$209,998		
D606AW28	Scope Development	D03333	Scope10%-BW/RFK PSC-12-2891H WO55	May-15		\$729,577	May-15	\$729,577		
ED050303	Hugh Carey Tunnel-GIVB Mitigation -Raise Seawalls	E03127	PM Scpng Study F/A(TBTA-E2130)	May-15		\$200,000	May-15	\$200,000		
D601RK76	Miscellaneous Structural Repairs	D03346	Design-2014 Biennial (PSC13-2944A WO#2)	Jun-15		\$123,609	Jun-15	\$123,609		
D602MP21	Rehabilitate Rockaway Point Blvd	D03347	MP21 Asbestos Abate 12-HS-2894D	Jun-15		\$70,350	Jun-15	\$91,200		
D606AW18	Protective Liability Insurance	D02871	AAPL Premium 6/2015-6/2016-INITIAL	Jun-15		\$1,406,431	Jun-15	\$1,406,431		
D601MPXB	Miscellaneous Steel Repairs & Structural Rehabilitation	D03314	PM Construction F/A(TBTA-D1761)	Jul-15		\$700,000	Jul-15	\$700,000		
D602MP21	Rehabilitate Rockaway Point Blvd	D03211	Design/Build Stipend PSC-15-2976A	Jul-15		\$20,000	Jul-15	\$20,000		
D603AW48	2nd Generation E-Zpass In-Lane	D3297	AET-Scoping PSC-13-2941A	Jul-15		\$42,000	Jul-15	\$42,000		
D604MPXA	Rehabilitation of Programmable Logic Controller & Mechanical Sys	D03309	Ph 2-PM Construction F/A(TBTA-D1762)	Jul-15		\$1,000,000	Jul-15	\$1,000,000		
D606AW22	Miscellaneous	D03267	BCOR/VE TN49 PSC12-2891 wo45)	Jul-15		\$168,354	Jul-15	\$168,354		
D607MPXC	Painting of MPB Roadway Structures	D03319	Paint-PM Construction F/A(TBTA-D1760)	Jul-15		\$1,000,000	Jul-15	\$1,000,000		
ED040207	Replace MPB Electrical Equipmt at North Abutment	E03471	PM Design/Build F/A - SI	Jul-15		\$122,800	Jul-15	\$122,800		
ED040210	Repl CBB Mech&Elect Equip-S. Abutment & Svc Bldg	E03464	PM Design/Build F/A SI	Jul-15		\$61,400	Jul-15	\$61,400		
D606AW28	Scope Development	D03232	Scope Development -RK07	Aug-15		\$566,632	Aug-15	\$562,632		
D606AW28	Scope Development	D03327	Scope-Performance Specis-BB07/30/64/QM91	Aug-15		\$472,202	Aug-15	\$472,202		
D704HH13	Replacement of Facility Lighting System	D03362	Design (PSC-12-2891L WO 53)	Aug-15		\$1,046,680	Aug-15	\$1,046,680		
D706AW21	Program Administration	D03400	2015 Program Adm (TBTA-1768)	Sep-15		\$1,100,000	Sep-15	\$1,100,000		
D706AW21	Program Administration	D03401	2015 Indirect Program Adm (TBTA-1769)	Sep-15		\$3,600,000	Sep-15	\$3,600,000		
D701BW14	Miscellaneous Structural Rehabilitation	D03355	Construction Adm. (PSC15-2966)	Oct-15		\$1,849,001	Oct-15	\$1,820,366		
D701BW14	Miscellaneous Structural Rehabilitation	D03354	PM Construction F/A(TBTA-D1798)	Oct-15		\$857,600	Oct-15	\$834,975		
D707BW84	Paint Tower Interior Base Cells and Struts	D03368	Paint-PM Construction F/A(TBTA-D1800)	Oct-15		\$942,626	Oct-15	\$882,020		
D707BW84	Paint Tower Interior Base Cells and Struts	D03369	Construction Adm. (PSC15-2966)	Oct-15		\$1,863,792	Oct-15	\$1,656,428		
D701BW84	Cable & Suspender Rope Investigation/Testing	D03364	Construction Adm. (PSC15-2966)	Oct-15		\$1,244,267	Oct-15	\$836,741		
D701BW84	Cable & Suspender Rope Investigation/Testing	D03363	PM Construction F/A(TBTA-D1799)	Oct-15		\$1,022,692	Oct-15	\$1,038,903		
D704TN60	Anchorage Dehumidification	D03381	PM Construction F/A(TBTA-D1797)	Oct-15		\$1,547,556	Oct-15	\$1,547,556		
D704RK21	Install Fire Standpipe/Upgrade Protection System	D03393	BC Development F/A (TBTA-D1783)	Oct-15		\$56,243	Oct-15	\$56,243		
D702VN84	Replace Upper Level Approach Anchorage Deck	D03402	BC Development F/A (TBTA-D1782)	Oct-15		\$56,243	Oct-15	\$56,243		
D704BW32	Installation of Fire Standpipe Connections	D03417	BC Development F/A (TBTA-D1771)	Oct-15		\$58,493	Oct-15	\$58,493		
D701CB18	Scour Protection & Pier Fender Repair Replacement	D03420	BC Development F/A (TBTA-D1773)	Oct-15		\$56,243	Oct-15	\$56,243		
D701HH07	Structural Rehabilitation	D03421	BC Development F/A (TBTA-D1774)	Oct-15		\$56,243	Oct-15	\$56,243		
D602MP21	Rehabilitate Rockaway Point Blvd	D03343	Design/Build Stipend PSC-15-2976	Oct-15		\$20,000	Oct-15	\$20,000		
D602MP21	Rehabilitate Rockaway Point Blvd	D03344	Design/Build Stipend PSC-15-2976	Oct-15		\$20,000	Oct-15	\$20,000		
D602MP21	Rehabilitate Rockaway Point Blvd	D03345	Design/Build Stipend PSC-15-2976	Oct-15		\$20,000	Oct-15	\$20,000		
D701QM18	Manhattan Plaza Structural Rehabilitation Phase 2	D03422	BC Development F/A (TBTA-D1786)	Oct-15		\$56,243	Oct-15	\$56,243		
D701TN53	Approach Viaduct Seismic Retrofit/Struct. Rehab.	D03376	BC Development F/A (TBTA-D1779)	Oct-15		\$56,492	Oct-15	\$58,492		
D701VN10	Anchorage & Piers Rehabilitation and Sealing	D03389	BC Development F/A (TBTA-D1780)	Oct-15		\$56,243	Oct-15	\$56,243		

**MTA BRIDGES & TUNNELS  
CAPITAL PROGRAM  
2015 CAPITAL MILESTONE BACK-UP - PROJECT AWARDS**

ACEP	Project Description	IMPACT Task	Task Description	Goal Start Date	Goal Value	Budget Value	Actual Start Date	Actual Value	Forecast Start Date	Forecast Value
D701VN89	Tower Pier Rehab/ Construct Mooring Platform	D03386	BC Development F/A (TBTA-D1785)	Oct-15		\$56,243	Oct-15	\$56,243		
D702VN11	Brooklyn Approach Reconstruction	D03427	BC Development F/A (TBTA-D1781)	Oct-15		\$58,493	Oct-15	\$58,493		
D703AW65	Toll Collection System Rehabilitation/ Upgrades	D03353	Design (PSC-12-2891B wo39)	Oct-15		\$3,306,540	Oct-15	\$2,728,799		
D703AW65	Toll Collection System Rehabilitation/ Upgrades	D03350	BC Development F/A (TBTA-D1770)	Oct-15		\$114,736	Oct-15	\$114,736		
D704BW39	Install Electronic Monitoring and Detection System	D03418	BC Development F/A (TBTA-D1772)	Oct-15		\$58,493	Oct-15	\$58,493		
D704HH13	Replacement of Facility Lighting System	D03361	PM Design F/A (TBTA-D1766)	Sep-15		\$254,000	Oct-15	\$254,000		
D704HH13	Replacement of Facility Lighting System	D03360	BC Development F/A (TBTA-D1775)	Oct-15		\$5,055	Oct-15	\$5,055		
D704RK07	Electrical /Mechanical Rehab of Harlem River Lift Span	D03423	BC Development F/A (TBTA-D1776)	Oct-15		\$56,243	Oct-15	\$56,243		
D705RK58	Rehab. Robert Moses Buildg and Ancillary Facilities	D03425	BC Development F/A (TBTA-D1777)	Oct-15		\$56,243	Oct-15	\$56,243		
D606AW28	Scope Development	D03801	RK70-Scope/Stringer Monitor (PSC-12-2891)	Nov-15		\$793,762	Nov-15	\$793,762		
ED040210	Replace CBB Mech & Elect Equip-S. Abut & Service Bldg	E03461	Design /Build SI	Nov-15		\$1,618,050	Nov-15	\$1,618,050		
D701BW14	Miscellaneous Structural Rehabilitation	D03356	CSS (PSC-13-2925)	Nov-15		\$800,000	Nov-15	\$780,992		
D701BW84	Cable & Suspender Rope Investigation/ Testing	D03365	CSS (PSC-13-2925)	Nov-15		\$500,000	Nov-15	\$772,838		
D707BW84	Paint Tower Base Cells and Struts	D03370	CSS (PSC-13-2925)	Nov-15		\$1,000,000	Nov-15	\$81,952		
D603AW35	Weather Information System	D02481	PM Construction F/A (TBTA-D1802)	Nov-15		\$176,889	Nov-15	\$176,889		
D701VN10	Anchorage & Pier Rehabilitation and Sealing	D03390	PM Design F/A(TBTA-D1826)	Dec-15		\$1,260,304	Dec-15	\$1,260,304		
D701VN89	Tower Pier Rehab/ Construct Mooring Platform	D03387	PM Design F/A & D/B RFP Dev(TBTA-D1825)	Dec-15		\$315,076	Dec-15	\$315,076		
D701RK19	Sewismic/Wind Retrofit & Structural Rehab Phi	D03424	BC Development F/A (TBTA-D1783)	Dec-15		\$56,243	Dec-15	\$56,243		
D701RK70	Miscellaneous Structural Rehabilitation	D03426	BC Development F/A (TBTA-D1778)	Dec-15		\$56,243	Dec-15	\$56,243		
D704RK21	Install Fire Standpipe/Upgrade Protection System	D03394	PM Dsgn F/A & D/B RFP Dev(TBTA-D1796)	Dec-15		\$1,000,000	Dec-15	\$300,000		
D705AW12	Hazardous Material Abatement	D03433	2015-2019 PM Const F/A (TBTA-D1810)	Dec-15		\$1,500,000	Dec-15	\$1,500,000		
D703AW65	Toll Collection System Rehabilitation/ Upgrades	D03352	PM Design F/A-AW65 (TBTA-D1811)	Dec-15		\$300,000	Dec-15	\$300,000		
D701BW84	Cable & Suspender Rope Investigation/Testing	D0336	Construction (BW14/BW84)	Dec-15		\$15,553,335	Dec-15	\$5,814,843		
D701BW14	Miscellaneous Structural Rehabilitation	D03358	Construction ( BW14/BW84)	Dec-15		\$23,112,517	Dec-15	\$14,222,705		
D707BW84	Paint Tower Interior Base Cells and Struts	D03371	Construction	Dec-15		\$23,297,394	Dec-15	\$27,461,000		
D704TN60	Anchorage Dehumidification	D03382	Const. Adm. (PSC-15-2967)	Dec-15		\$3,207,605	Dec-15	\$3,100,485		
D707TN60	Anchorage Dehumidification-Painting	D03802	Const. Adm.-Painting (PSC-15-2967)	Dec-15		\$1,230,854	Dec-15	\$1,259,647		
D704TN60	Anchorage Dehumidification	D03384	Construction	Dec-15		\$29,861,161	Dec-15	\$35,210,733		
D707TN60	Anchorage Dehumidification-Painting	D03804	Construction- Painting	Dec-15		\$6,037,723	Dec-15	\$6,536,408		
D704TN60	Anchorage Dehumidification	D03383	CSS (PSC-13-2927)	Dec-15		\$900,000	Dec-15	\$734,183		
D707TN60	Anchorage Dehumidification-Painting	D03803	CSS-Painting (PSC-13-2927)	Dec-15		\$300,000	Dec-15	\$43,634		
D701VN10	Anchorage & Pier Rehabilitation and Sealing	D03391	Design (PSC-15-2969)	Dec-15		\$2,924,646	Dec-15	\$2,361,643		
D701VN89	Tower Pier Rehab/ Construct Mooring Platform	D03388	10% Design D/B RFPDev.(PSC15-2969)	Dec-15		\$500,000	Dec-15	\$630,000		
D703AW32	Installation of Rotating Prism Signs	D03415	RPS-CSS (PSC12-2891C wo68)	Dec-15		\$300,000	Dec-15	\$264,741		
D703AW32	Installation of Rotating Prism Signs	D03414	RPS-Construction	Dec-15		\$11,468,109	Dec-15	\$8,689,643		
D706AW28	Scope Development	D03456	2016-2019 PM Design F/A(TBTA-D1816)	Dec-15		\$2,900,000	Dec-15	\$2,900,000		
ED050301	Flood Mitigation-Relocate Rev Equip-VN	E03764	CSS	Dec-15		\$153,051	Dec-15	\$153,051		
<b>Grand Total</b>					<b>\$412,939,459</b>	<b>\$573,100,957</b>		<b>\$526,467,308</b>	<b>Grand Total</b>	<b>\$0</b>



# Bridges and Tunnels

---

---

## Procurements January 2016



# Staff Summary

<b>Subject:</b>	Request for Authorization to Award Various Procurements
<b>Department:</b>	Procurement
<b>Department Head Name</b>	M. Margaret Terry <i>mmt</i>
<b>Department Head Signature</b>	
<b>Project Manager Name</b>	Various

<b>Date</b>	January 6, 2016
<b>Vendor Name</b>	
<b>Contract Number</b>	
<b>Contract Manager Name</b>	
<b>Table of Contents Ref #</b>	

Board Action					
Order	To	Date	Approval	Info	Other
1	President	1/6/16			
2	MTA B&T Committee	1/25/16			
3	MTA Board	1/27/16			

Internal Approvals			
Order	Approval	Order	Approval
	President <i>DS</i>		VP Operations
	Executive Vice President <i>SE</i>		VP & Chief Engineer
	SVP & General Counsel		VP & Chief Procurement Officer
	VP Administration		

Internal Approvals (cont.)							
Order	Approval	Order	Approval	Order	Approval	Order	Approval
	Chief Financial Officer <i>DS</i>		Chief Technology Officer		Chief Health & Safety Officer		Chief EEO Officer
	Chief Security Officer		Chief Maintenance Officer		MTA Office of Civil Rights		

## PURPOSE:

To obtain approval of the Board to award various contracts and purchase orders, and to inform the MTA B&T Committee of these procurement actions.

## DISCUSSION:

**MTA B&T proposes to award Non-Competitive procurements in the following categories:**

<u>Schedules Requiring Majority Vote</u>		<u># of Actions</u>	<u>\$ Amount</u>
Schedule F	Personal Service Contracts	1	\$ 3.359M
SUBTOTAL		1	\$ 3.359M

**MTA B&T proposes to award Competitive procurements in the following categories:**

<u>Schedules Requiring Two-Thirds Vote</u>		<u># of Actions</u>	<u>\$ Amount</u>
Schedule G	Miscellaneous Service Contracts	1	\$ 0.141M
SUBTOTAL		1	\$ 0.141M

**MTA B&T presents the following procurement actions for Ratification: None.**

TOTAL	2	\$ 3.500M
-------	---	-----------

## BUDGET IMPACT:

The purchases/contracts will result in obligating MTA B&T and Capital funds in the amount listed. Funds are available in the current MTA B&T operating/capital budgets for this purpose.

## RECOMMENDATION:

That the purchases/contracts be approved as proposed. (Items are included in the resolution of approval at the beginning of the Procurement Section.)

The legal name of MTA Bridges and Tunnels is Triborough Bridge and Tunnel Authority.

**MTA BRIDGES & TUNNELS**  
**TRIBOROUGH BRIDGE AND TUNNEL AUTHORITY**

**WHEREAS**, in accordance with §559 and §2879 of the Public Authorities Law and the All Agency Procurement Guidelines, the Board authorizes the award of certain non-competitive purchase and public work contracts, and the solicitation and award of request for proposals in regard to purchase and public work contracts; and

**WHEREAS**, in accordance with §2879 of the Public Authorities Law and the All Agency Procurement Guidelines, the Board authorizes the award of certain non-competitive miscellaneous procurement contracts, and certain changes orders to procurement, public work, and miscellaneous procurement contracts; and

**WHEREAS**, in accordance with § 2879 of the Public Authorities Law and the All Agency Guidelines for Procurement of Services, the Board authorizes the award of certain service contracts, and certain change orders to service contracts; and

**NOW**, the Board resolves as follows:

1. As to each purchase and public work contract set forth in annexed Schedule A, the Board declares competitive bidding to be impractical or inappropriate for the reasons specified therein and authorizes the execution of each such contract.
2. As to each request for proposals (for purchase and public work contracts) set forth in Schedule B for which authorization to solicit proposals is requested, for the reasons specified therein, the Board declares competitive bidding to be impractical or inappropriate, declares it is in the public interest to solicit competitive request for proposals and authorizes the solicitation of such proposals.
3. As to each request for proposals (for purchase and public work contracts) set forth in Schedule C for which a recommendation is made to award the contract, the Board authorizes the execution of said contract.
4. The Board ratifies each action set forth in Schedule D for which ratification is requested.
5. The Board authorizes the execution of each of the following for which Board authorization is required: i) the miscellaneous procurement contracts set forth in Schedule E; ii) the personal service contracts set forth in Schedule F; iii) the miscellaneous service contracts set forth in Schedule G; iv) the modifications to personal/miscellaneous service contracts set forth in Schedule H; the contract modifications to purchase and public work contracts set forth in Schedule I; and vi) the modifications to miscellaneous procurement contracts set forth in Schedule J.
6. The Board ratifies each action taken set forth in Schedule K for which ratification is requested.
7. The Board authorizes the budget adjustments to estimated contracts set forth in Schedule L.



**LIST OF NON-COMPETITIVE PROCUREMENTS FOR BOARD APPROVAL**  
**JANUARY 2016**

**MTA BRIDGES & TUNNELS**

**Procurements Requiring Majority Vote:**

**F: Personal Service Contracts**

(Staff Summaries required for items greater than: \$100K Sole Source; \$250K Other Non-Competitive; \$1M Competitive)

- |    |   |                       |                                      |
|----|---|-----------------------|--------------------------------------|
| 1. | <b>Lehigh University, ATLSS<br/>Engineering Research Center<br/>Contract Nos. PSC-15-2974</b> | <b>\$3,358,517.06</b> | <b><u>Staff Summary Attached</u></b> |
|----|---|-----------------------|--------------------------------------|

3 yr. 7 month Contract – Non-Competitive  
Prototype Orthotropic Deck Panel Laboratory Testing for Project TN-49A at the Throgs Neck Bridge (TNB).

# Staff Summary

Page 1 of 2

Item Number 1 (Final)					
Dept & Dept Head Name: Joe Keane, VP and Chief Engineer <i>Joe Keane</i>					
Division & Division Head Name: Aris Stathopoulos, DCE Project Mgt. <i>Edmund (Elm) Stathopoulos &amp; AS</i>					
Board Reviews					
Order	To	Date	Approv	Info	Other
1	President	1/06/16			
2	MTA B&T Committee	1/25/16			
3	MTA Board	1/27/16			
Internal Approvals					
Order	Approval	Order	Approval		
1	Chief Financial Officer <i>AK</i>	4	Executive Vice President <i>IS</i>		
2	General Counsel <i>mmt</i>	5	President <i>OS</i>		
3	Chief Procurement Officer <i>BM</i>				

SUMMARY INFORMATION	
Vendor Name Lehigh University, ATLSS Engineering Research Center	Contract Number PSC-15-2974
Description Prototype Orthotropic Deck Panel Lab Testing for Project TN-49A	
Total Amount \$3,358,517.06	
Contract Term (including Options, if any) Three (3) Years, Seven (7) Months	
Option(s) included in Total Amount? <input type="checkbox"/> Yes <input checked="" type="checkbox"/> No	
Renewal? <input type="checkbox"/> Yes <input checked="" type="checkbox"/> No	
Procurement Type <input type="checkbox"/> Competitive <input checked="" type="checkbox"/> Non-competitive	
Solicitation Type <input checked="" type="checkbox"/> RFP <input type="checkbox"/> Bid <input type="checkbox"/> Other:	
Funding Source <input type="checkbox"/> Operating <input checked="" type="checkbox"/> Capital <input type="checkbox"/> Federal <input type="checkbox"/> Other:	

## Narrative

### I. PURPOSE/RECOMMENDATION

To obtain approval in accordance with the All-Agency Guidelines for Procurement of Services to award a non-competitive personal service contract, Contract PSC-15-2974 for Prototype Orthotropic Deck Panel Laboratory Testing for Project TN-49A at the Throgs Neck Bridge (TNB) to Lehigh University, ATLSS Engineering Research Center (ATLSS) located at 117 ATLSS Drive, Bethlehem, PA in an amount of \$3,358,517.06, for a period of three (3) years, seven (7) months.

### II. DISCUSSION

As part of the 2015 – 2019 Capital Program, B&T intends to replace the roadway deck on the suspended spans of the TNB. A recommended design alternative is to fabricate and install a steel orthotropic deck to replace the existing concrete filled grid deck. The benefits of this alternative are: an extended service life; reduced loading on the main cables; improved aerodynamic stability and reduced maintenance. In order to validate and refine the design concept and computer modeling that has taken place it is deemed prudent for B&T to undertake a laboratory testing program of a full

(rev. 1/22/14)

## Staff Summary

scale prototype orthotropic deck section. The services required are as follows: provide sufficient laboratory space and fixtures required for the installation of the prototype deck; furnishing and installing the instrumentation and data acquisition systems; performance of fatigue resistance testing and monitoring and analyses and reporting of the test data. The testing program will help to refine deck fabrication procedures, evaluate anticipated long term deck performance requirements and welding or other specialized procedures. A complex laboratory testing program of this magnitude requires capacity, facilities and services that can only be provided by an academic institution with specialized large scale structural research capabilities, along with experienced high level technical and theoretical expertise. Lehigh University's Center of Advanced Technology for Large Scale Systems (ATLSS) is the only known facility that can meet the requirements for B&T's testing program. ATLSS is an internationally recognized leader in the testing and evaluation of bridge structures. The American Association of State Highway and Traffic Officials (AASHTO), American Welding Society (AWS) and American Railway Engineering and Maintenance Association (AREMA) base their fatigue design criteria on studies and research conducted at ATLSS. In conducting outreach it was determined that other research facilities are limited to performing testing of deck components only, not a full scale prototype and furthermore do not have the capacity required for B&T's prototype orthotropic deck panel as designed. The other facilities cannot replicate ATLSS's ability to simulate actual bridge structures and conditions. ATLSS has successfully performed similar orthotropic deck prototype testing and analysis programs for B&T's Bronx-Whitestone and Verrazano Narrows Bridges, as well as the Williamsburg Bridge for NYCDOT.

ATLSS was issued the Request for Proposal and submitted a cost proposal in an amount totaling \$3,372,954. The Engineer's revised estimate is \$2,949,337. A negotiated amount of \$3,358,517.06 was agreed upon, which is 13.9% above the estimate and is considered fair and reasonable. The complex fatigue load testing protocol has been modified requiring additional laboratory time, materials and labor hours, which were not considered in the estimate. Lehigh University is considered a responsible consultant.

### **III. D/M/WBE INFORMATION**

Based on the MTA's Department of Diversity and Civil Rights review, zero goals were assigned to this contract. There are no certified MWBE firms available to perform the specialized work required for this contract. Lehigh University, ATLSS Engineering Research Center has not completed any MTA contracts; therefore, no assessment of the firm's MWDBE performance can be determined at this time.

### **IV. IMPACT ON FUNDING**

Funding is available in the 2010 – 2014 Capital Budget under Project TN-49A.

### **V. ALTERNATIVES**

None are recommended. B&T does not have the resources to perform this work with in-house forces. ATLSS is considered the only domestic facility capable of successfully performing the required prototype orthotropic deck testing and analysis program.

**LIST OF COMPETITIVE PROCUREMENTS FOR BOARD APPROVAL**  
**JANUARY 2016**

**MTA BRIDGES & TUNNELS**

**Procurements Requiring Two-Thirds Vote:**

**G: Miscellaneous Service Contracts**

(Staff Summaries required for items greater than: \$100K Sole Source; \$250K Other Non-Competitive; \$1M RFP;  
No Staff Summary required if Sealed Bid Procurement)

1. **AARCO Environmental Services Corp.                      \$140,622.00**  
**Contract No. 15-MNT-2942**

5 yr. contract - Competitive Bid – 2 Bids

MTA Bridges and Tunnels (B&T) is seeking Board approval under the All-Agency Guidelines for Procurement of Services for the award of a competitively bid miscellaneous service contract, a Discretionary Procurement, to AARCO Environmental Services Corp., to provide maintenance and repair services of oil and water separators located at various Bridges and Tunnels locations. The total amount of this procurement is \$140,622 for a period of five years.

On September 23, 2015, B&T issued a solicitation for a Contractor to provide all labor, materials and equipment for maintaining the Oil and Water Separators. The service requirements were publicly advertised and the solicitation notice was sent to 23 firms and 7 firms requested copies of the solicitation. On November 12, 2015 two bids were submitted and are ranked as follows:

<u>Bidders</u>	<u>Bid Amount</u>
AARCO Environmental Services Corp.	\$140,622.00
AB Oil Services, Ltd.	\$239,170.00

The scope of services under the prospective contract has not significantly changed compared with the prior contract.

The rates for this contract are based on a sliding scale rate for years 1-3 and years 4-5 over a five year term. The overall bid amount is 11% lower than the user's estimate of \$158,955. The unit pricing submitted reflects an overall decrease for the line items when compared to the pricing of the current contract. After evaluation of the bids, it was determined that AARCO Environmental Services Corp. is the lowest responsive, responsible bidder. Based on competition, the price is considered fair and reasonable. The MTA Department of Diversity and Civil Rights has established goals of 0% MBE and 0% WBE for this contract. Funding is available in the Operating Budget chargeable to General Ledger #711642.