

EAST SIDE ACCESS

Bringing Long Island
Rail Road Service to the
East Side of Manhattan

LIRR Committee Report
September 24, 2018



Harold Interlocking

Northeast Quadrant

Mid-day Storage Yard

Track A Approach

Installation of new track and switches in Harold Interlocking



Newly installed track in Harold Interlocking



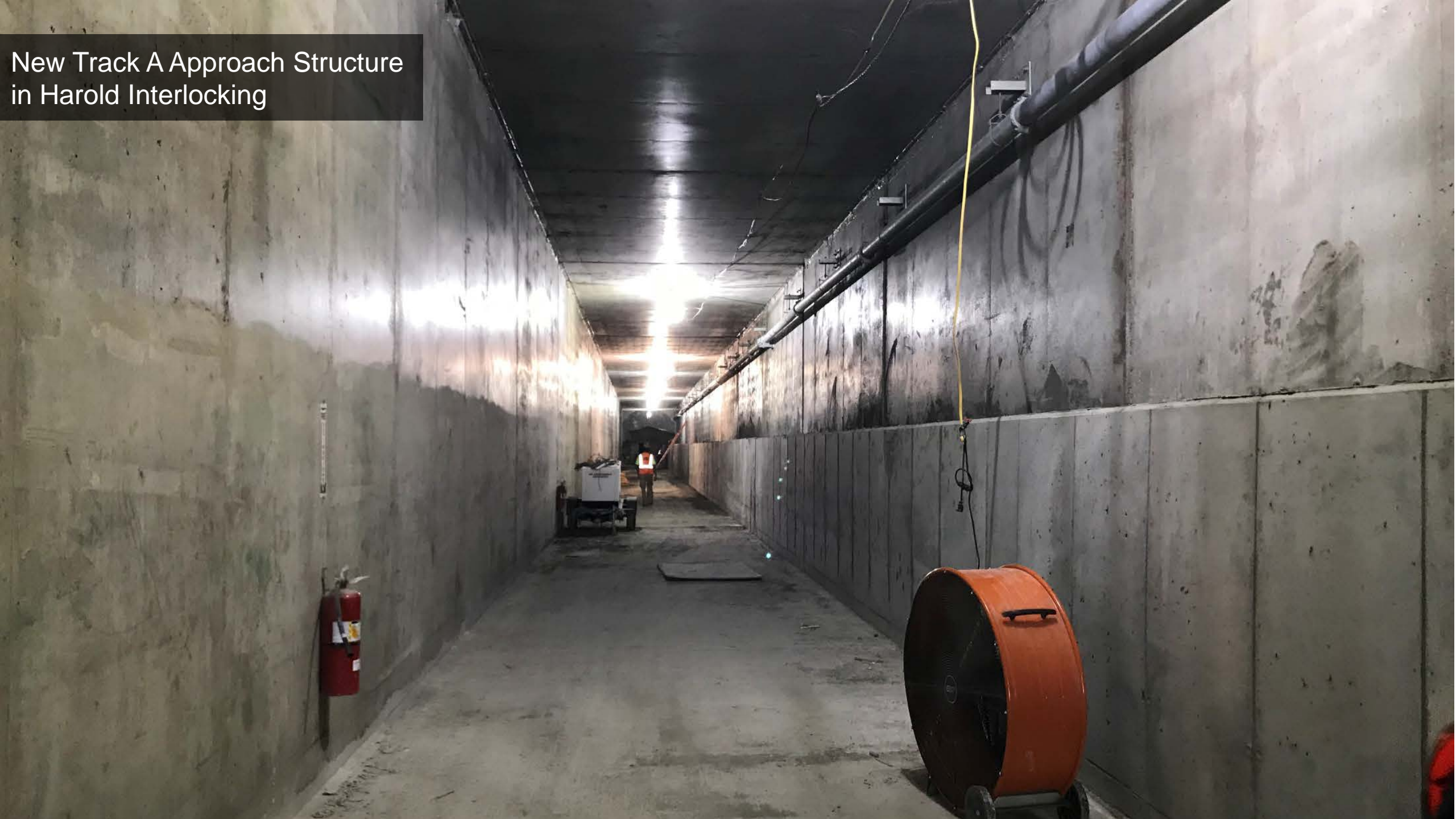
Future LIRR Mid-day Storage Yard



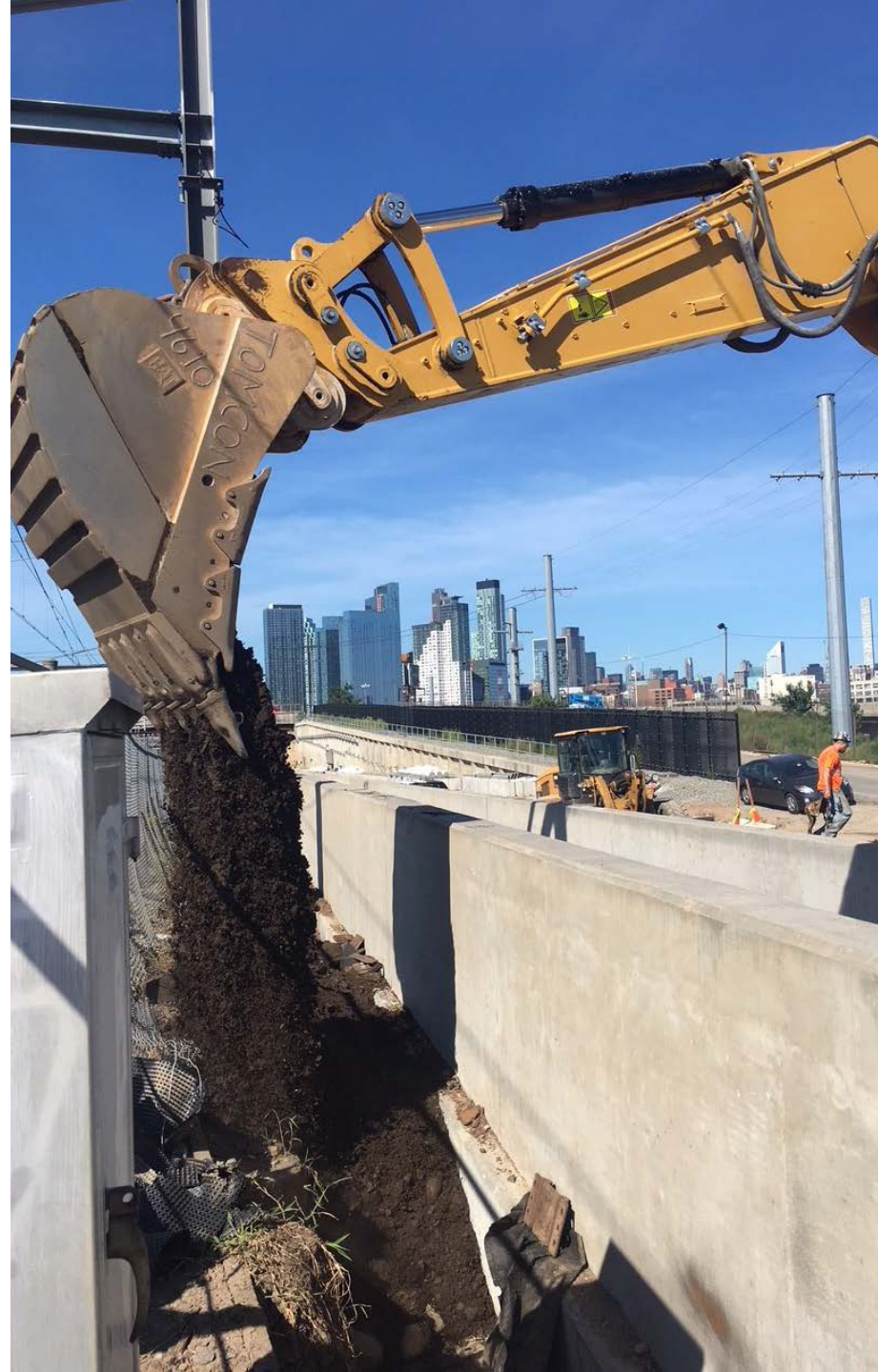
New Track A Approach Structure in Harold Interlocking



New Track A Approach Structure in Harold Interlocking



New Track A Approach Structure
in Harold Interlocking



Manhattan

Escalators

Concourse

Terminal & Tracks

Installation of escalators at 47th Street



Installed escalators at 48th Street



Newly installed ceiling and wall finishes in the 44th Street Concourse Passenger Corridor



Upper Level Terminal
Precast Smoke Plenum



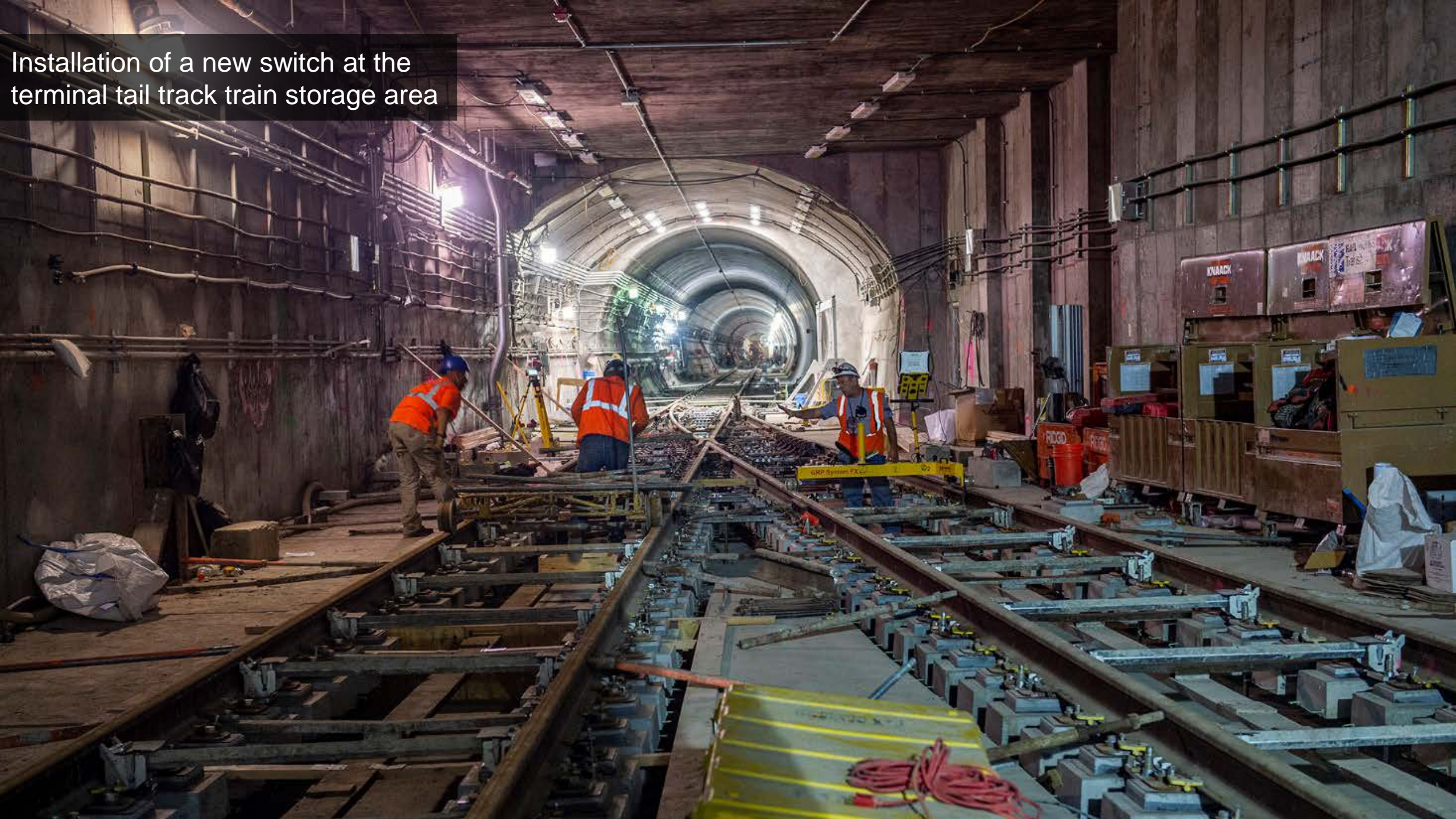
Installed track and 3rd rail at the Terminal's Lower Level



Installation of a stair support structure
between the mezzanine and lower level



Installation of a new switch at the terminal tail track train storage area



EAST SIDE ACCESS

Bringing Long Island
Rail Road Service to the
East Side of Manhattan

LIRR Committee Report
September 24, 2018

