

EAST SIDE ACCESS

Bringing Long Island
Rail Road Service to the
East Side of Manhattan

LIRR Committee Report
February 25, 2019



East Side Access Tour Program



Harold Program 2018

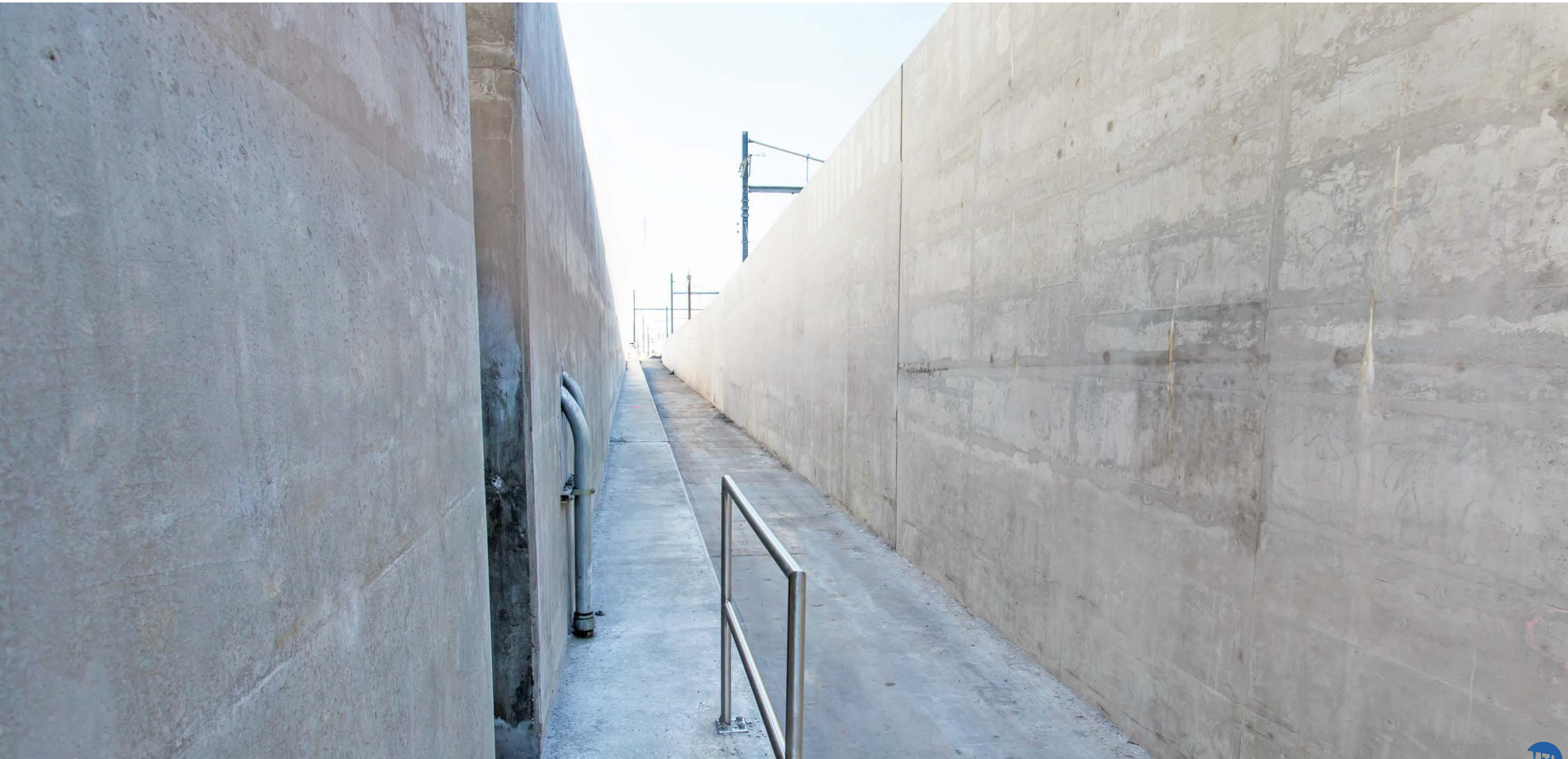
Five CIL Cutovers



Main Line 4 Returned to Operational Service



Completion of the Tunnel A Approach Structure



Completion of Harold Track Work Contract



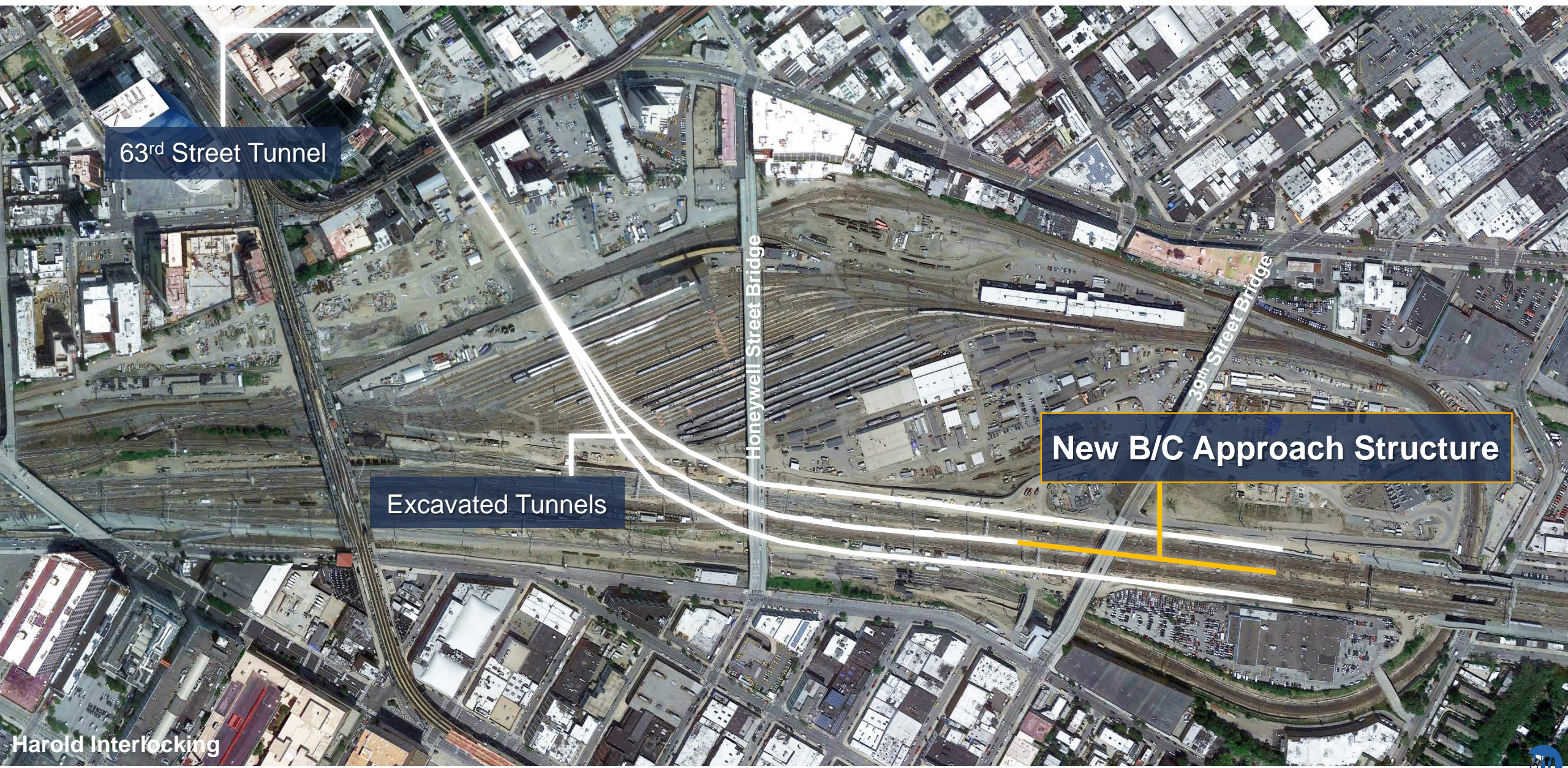
Cutover & Activation of GO2 Substation



Mid-Day Storage Yard Reaches 50% Complete



Final ESA Revenue Service Contract is Underway

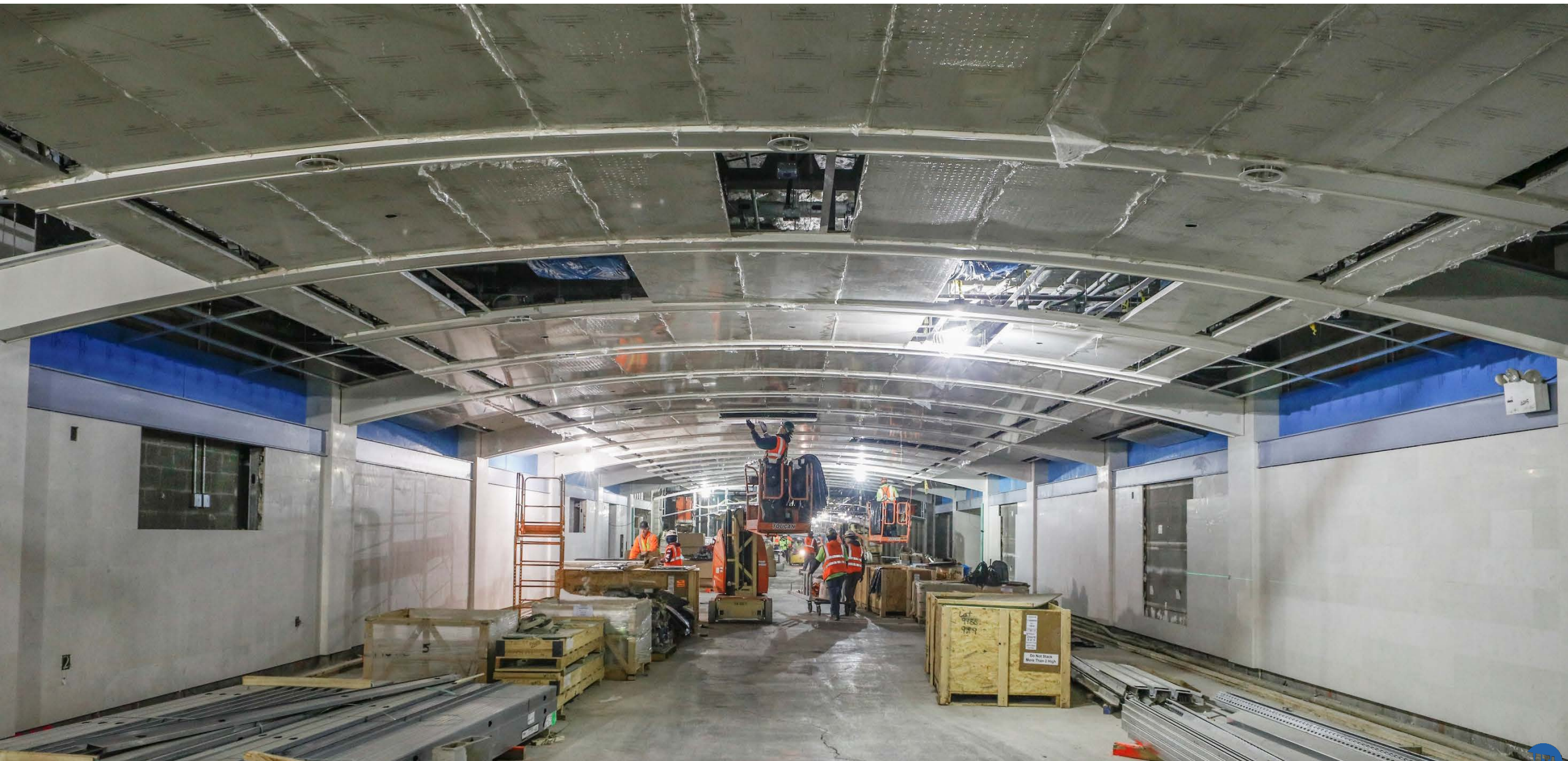


Manhattan Concourse & Terminal

Finishes in the Concourse & Terminal



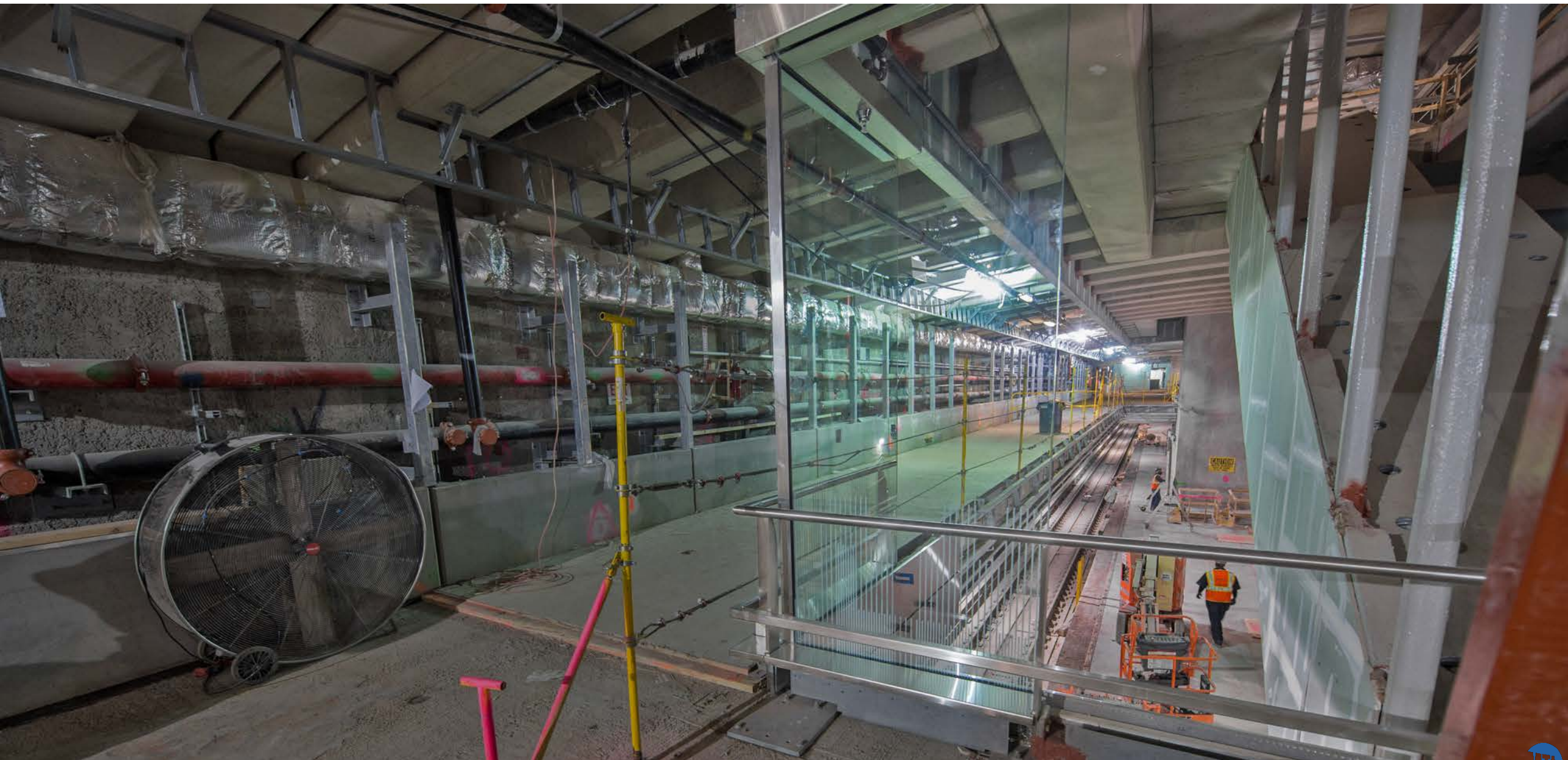
Finishes in the Concourse & Terminal



Finishes in the Concourse & Terminal



Finishes in the Concourse & Terminal

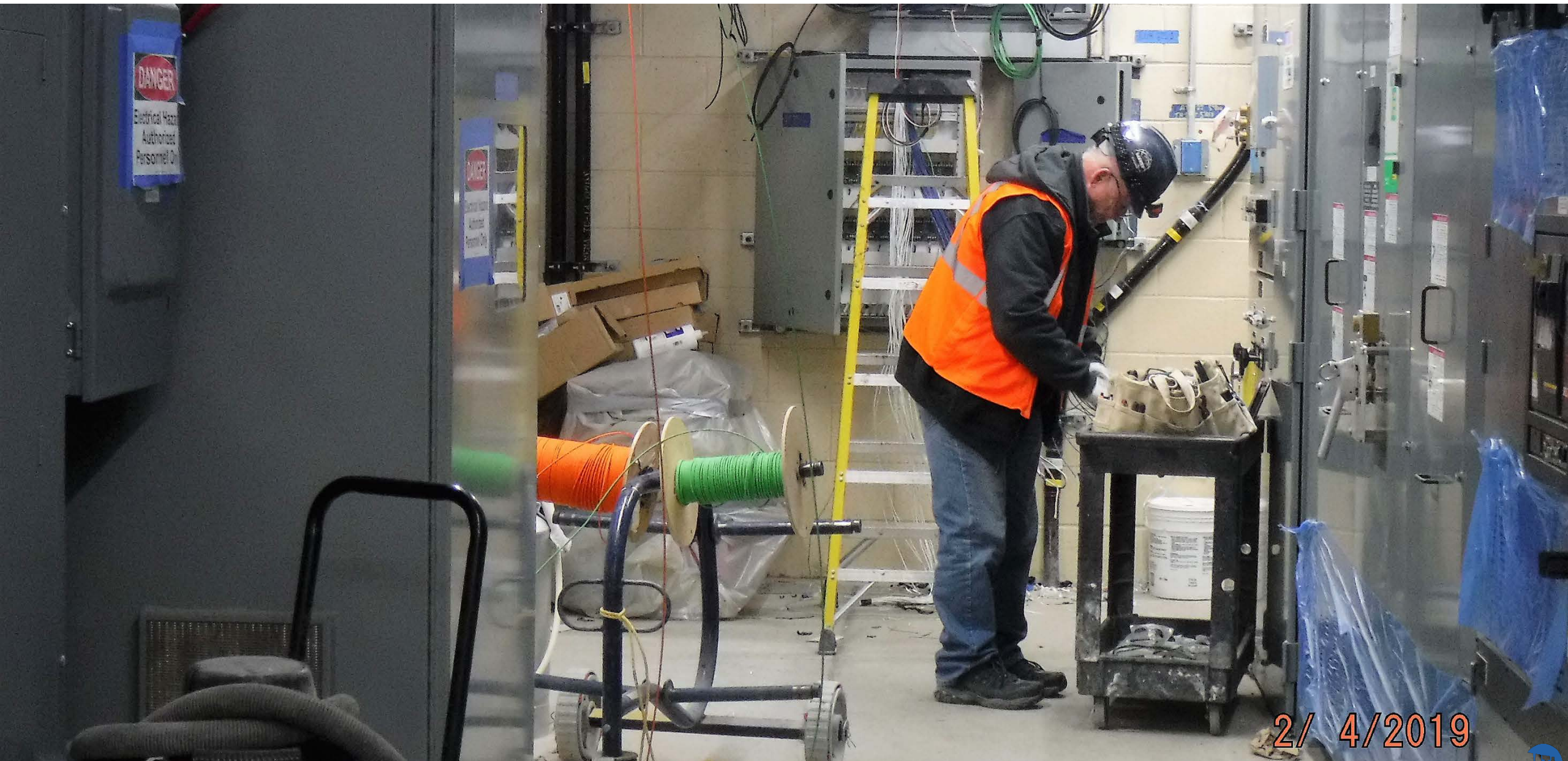


Systems

Facility Power – Substation Energization in Queens



Facility Power – Local Testing



Tunnel Ventilation – Early Systems Testing



Traction Power – Equipment Fabrication & Testing



Traction Power – Equipment Installation



EAST SIDE ACCESS

Bringing Long Island
Rail Road Service to the
East Side of Manhattan

LIRR Committee Report
February 25, 2019

@eastsideaccess  