

LIRR Expansion Project Floral Park to Hicksville

LIRR Committee Report March 2018

EXPANSION
PROJECT

FLORAL
PARK

HICKSVILLE

- **Award Date:**
December 2017
- **Contract Type:**
Design-Build
- **Project Budget Contained In:**
Approved 2015-2019 Capital Plan: \$2,050M
Future 2020-2024 Capital Plan: \$ 538M

DESIGN BUILD

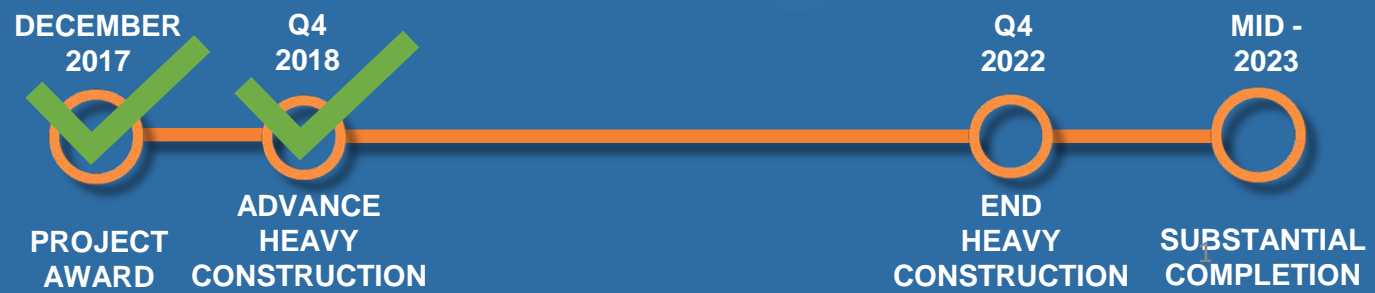
3rd TRACK CONSTRUCTORS
Picone | Dragados USA | CCA Civil | Halmar

LEAD OUTREACH

RUBENSTEIN

LEAD DESIGNER

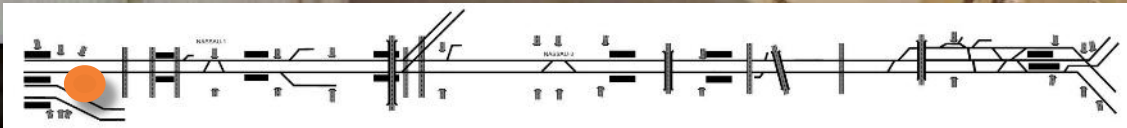
Stantec



Widening of Floral Park Viaduct



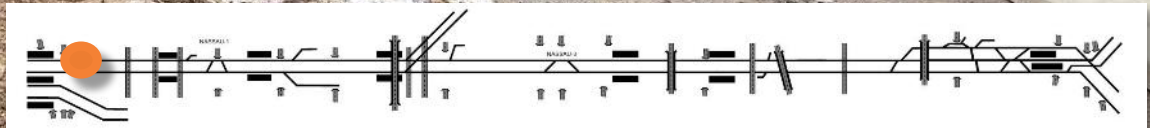
A Modern LI
LIRR Expansion Project
Floral Park to Hicksville



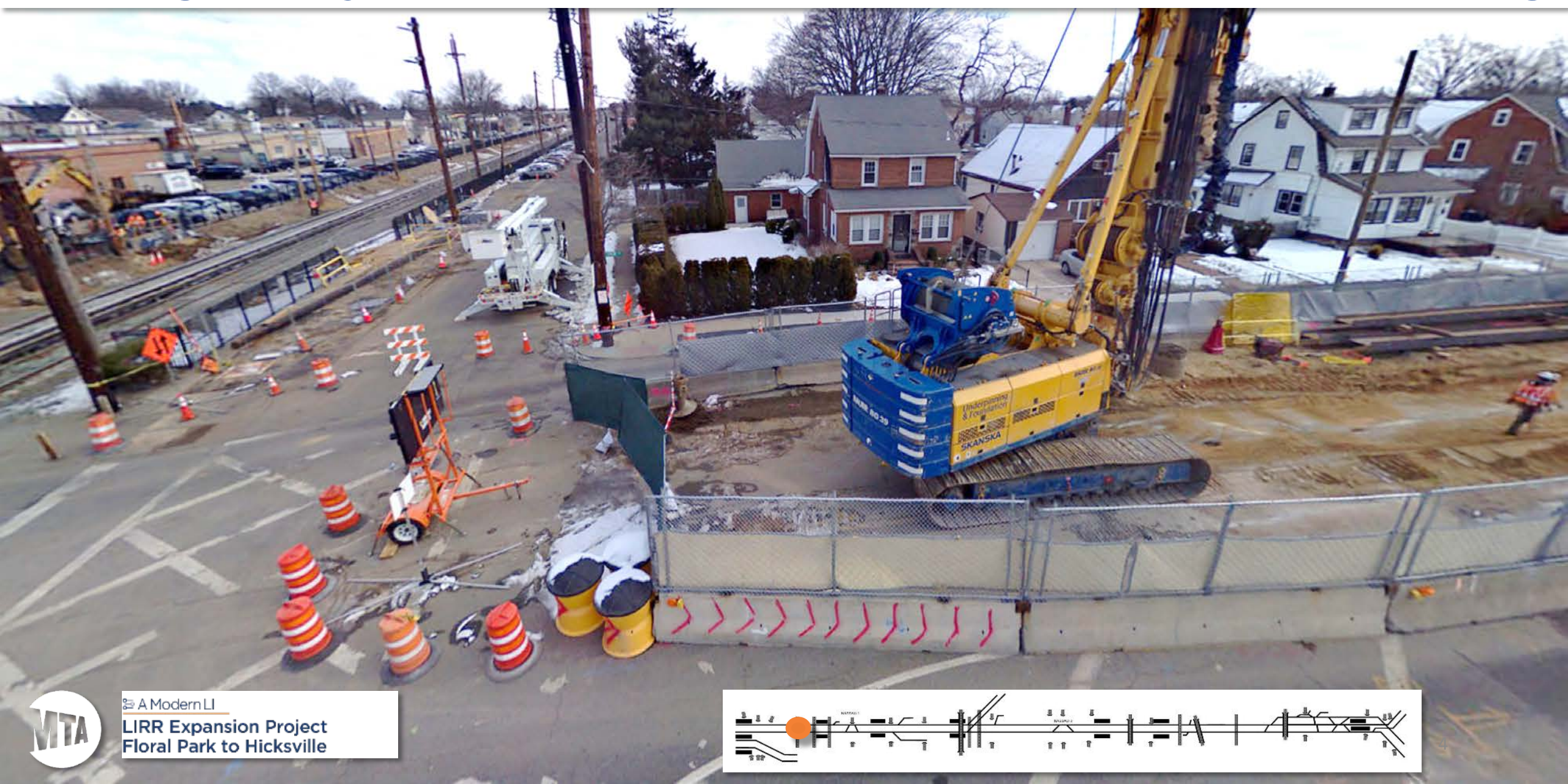
Getting Ready for Bridge Reconstruction at Plainfield Ave



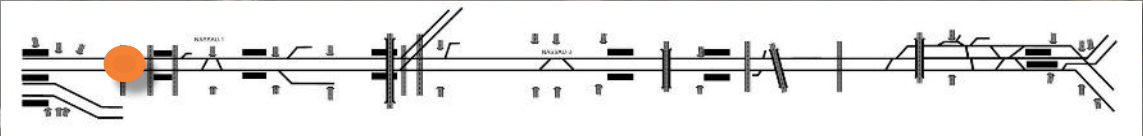
A Modern LI
LIRR Expansion Project
Floral Park to Hicksville



Getting Ready for Road Closure at Covert Ave Grade Crossing



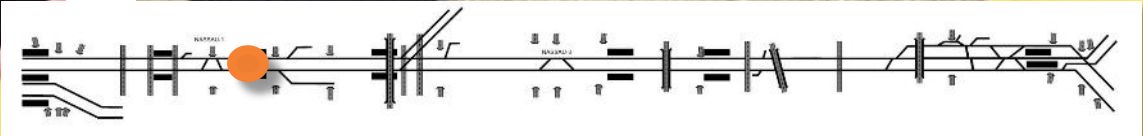
A Modern LI
LIRR Expansion Project
Floral Park to Hicksville



Getting Ready for Platform Demolition at Merillon Ave Station



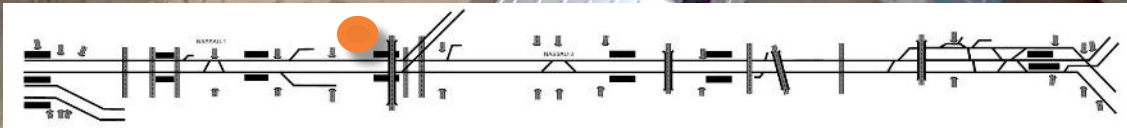
A Modern LI
LIRR Expansion Project
Floral Park to Hicksville



Installing SOE at Harrison Ave Garage in Mineola



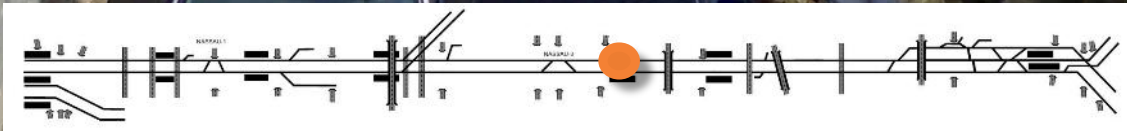
A Modern LI
LIRR Expansion Project
Floral Park to Hicksville



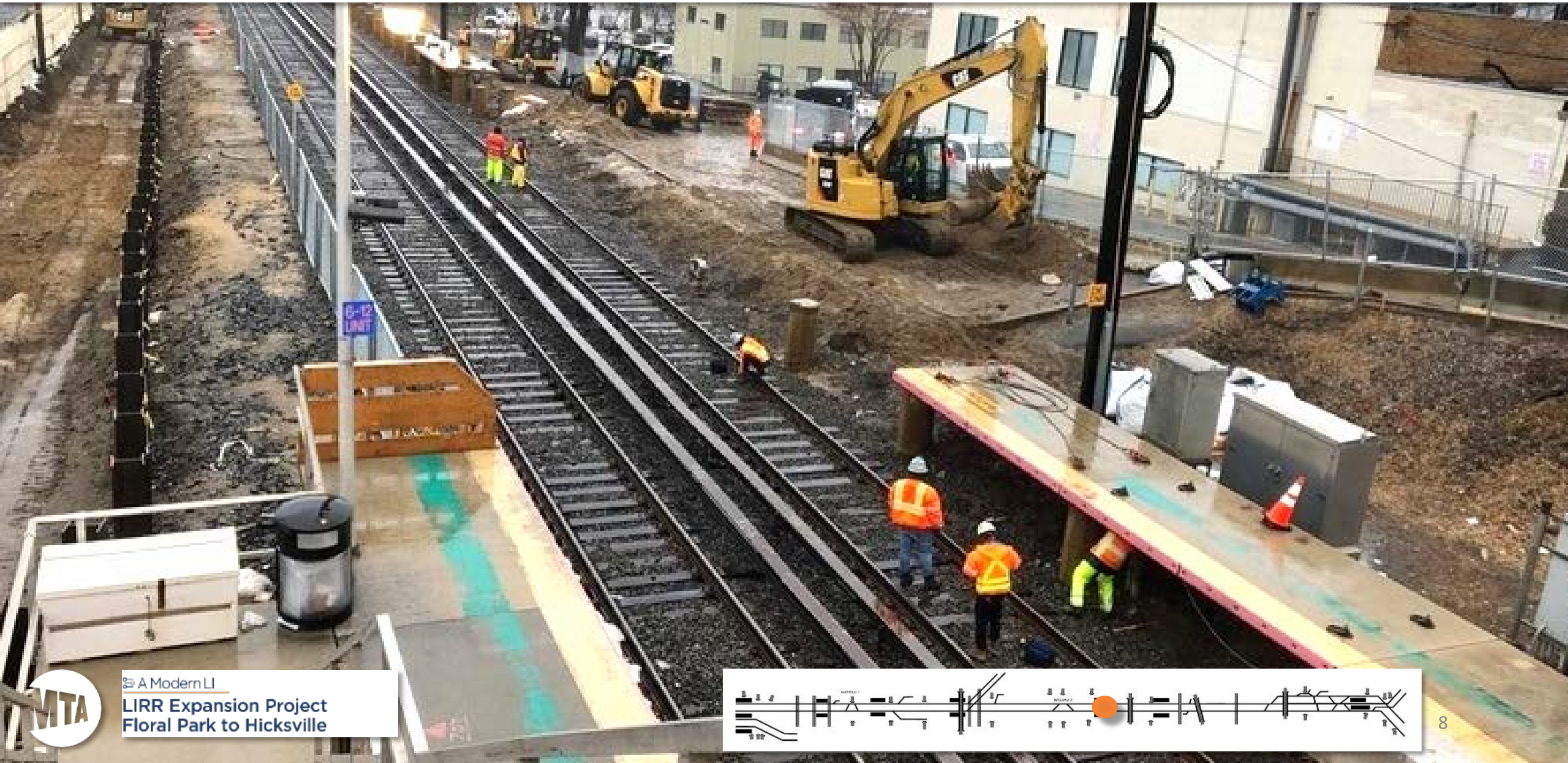
Installing SOE at Cherry Lane Ave Bridge Abutments



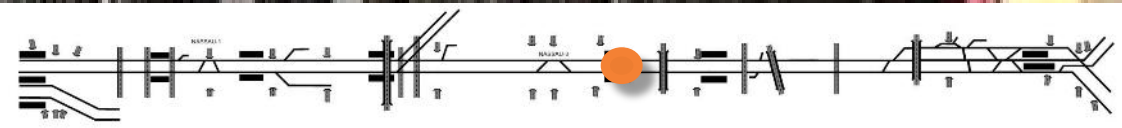
A Modern LI
LIRR Expansion Project
Floral Park to Hicksville



Reconstruction of Carle Place Station



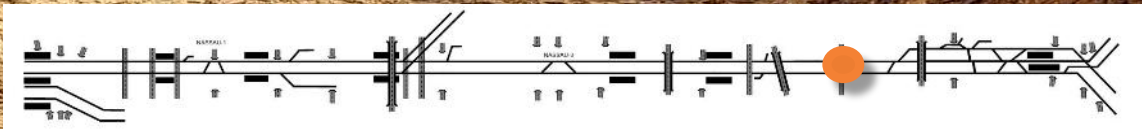
A Modern LI
LIRR Expansion Project
Floral Park to Hicksville



Constructing Urban Avenue Grade Crossing in Westbury



A Modern LI
LIRR Expansion Project
Floral Park to Hicksville



Keeping Communities Informed

A Modern LI
LIRR Expansion Project
Floral Park to Hicksville

Urban Avenue Grade Crossing Elimination Project

3rd TRACK CONSTRUCTORS
Picone | Dragados USA | CCA Civil | Halmar

LIRR Expansion Project Urban Avenue Detour

Key:

Closed Intersections

Path to Avoid

Detour Northbound

Detour Southbound

Shuttle Stops



At-grade railroad crossings have been a challenge to drivers, pedestrians and railroad passengers since the Iron Horse was invented. That's why, by the end of the LIRR Expansion Project, we will have eliminated seven of the grade crossings along the corridor and with it noise and idling automobiles.

During the peak morning and evening commuting hours, drivers and pedestrians frequently find crossing gates in the down position. Along Urban Avenue – the gates are down 27 to 35 percent of the time.

At-grade crossings aren't just inconvenient – they can also be dangerous. From 2007 to 2017, there were six fatal accidents at grade crossing locations along the LIRR Main Line corridor.

CLOSURE / SHUTTLE SERVICE

With the closure anticipated to begin March 8, 2019 and lasting approximately six months, 3TC will provide a free pedestrian shuttle service from the corner of Broadway and Urban Avenue (north of the tracks) to Main Street and Urban Avenue (south of the tracks). The shuttle is planned to run 7 days a week, every half hour from 7:00 a.m. to 7:00 p.m. Any changes to the schedule will be posted on www.LIRRExpansion.com.

DETOUR PLANS

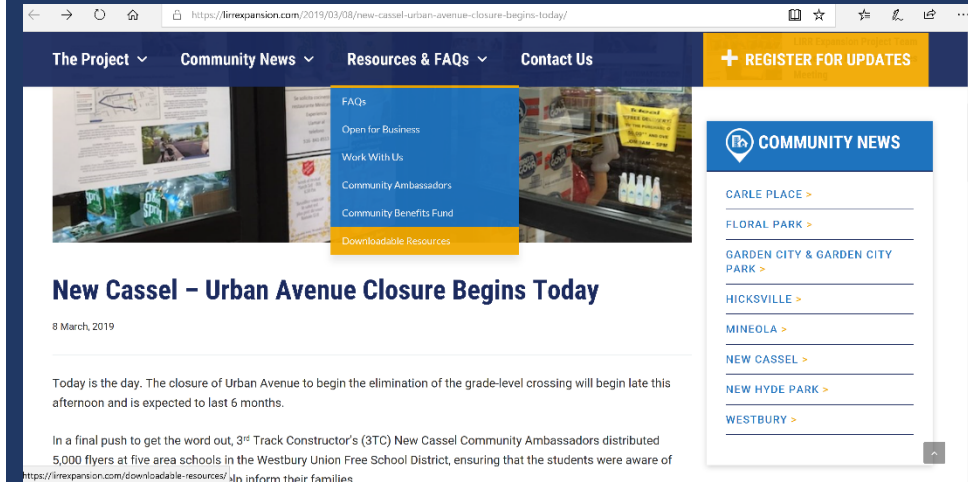
After extensive traffic impact studies and with input from local officials, we designed a detour plan to make navigating around the closure as easy as possible. The detour map above will get you from one side of the tracks to the other, safely.

CONTACT

As always, if you have any questions or concerns, please contact us 24/7 through the Hotline: 516-203-4955 or via email at CommunityOutreach@LIRRExpansion.com.

Para mas información sobre el LIRR Expansion Project, por favor visiten nuestro website: www.LIRRExpansion.com. Si tienen cualquier preguntas adicionales, o si les gustaría solicitar una reunión, porfavor mandenos un correo electronico a: communityoutreach@LIRRExpansion.com, o llame a nuestra línea directa que esta abierta las 24 horas: 516.203.4955.

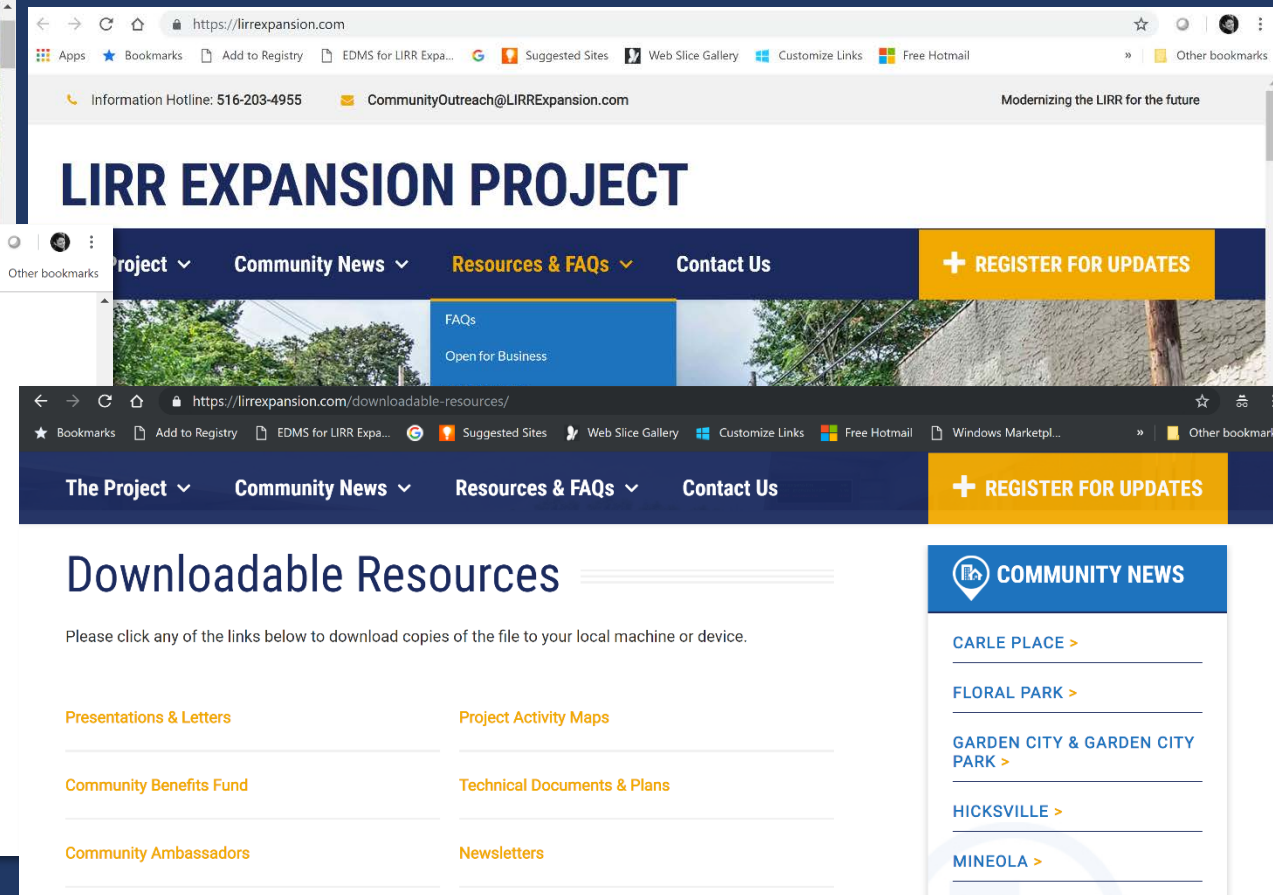
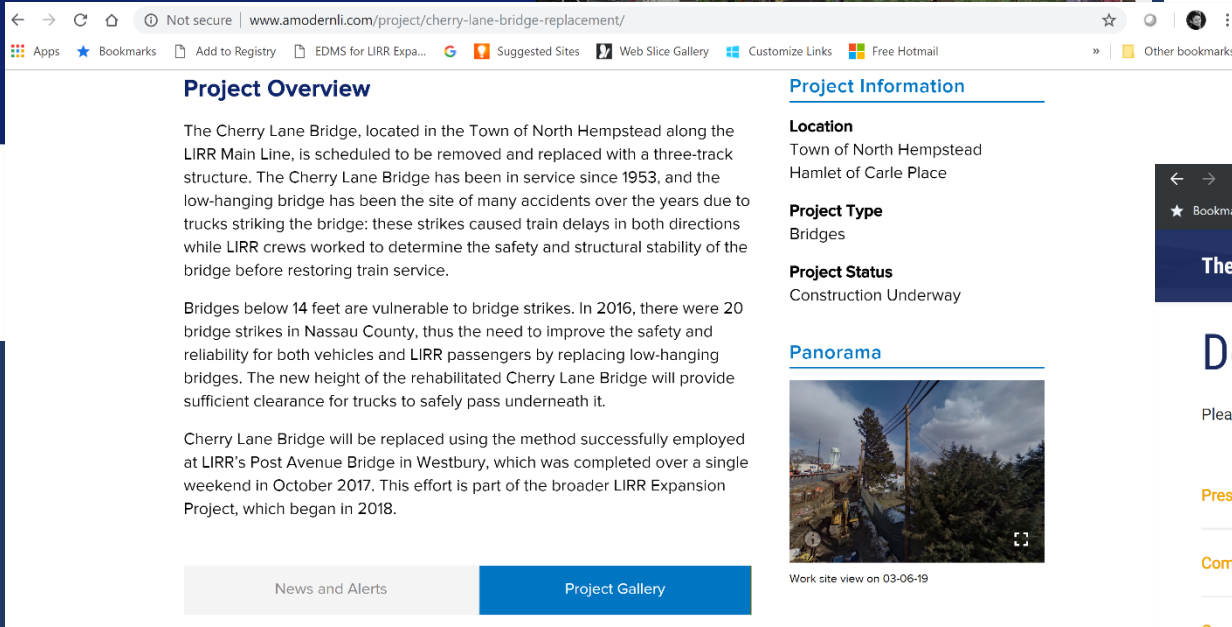
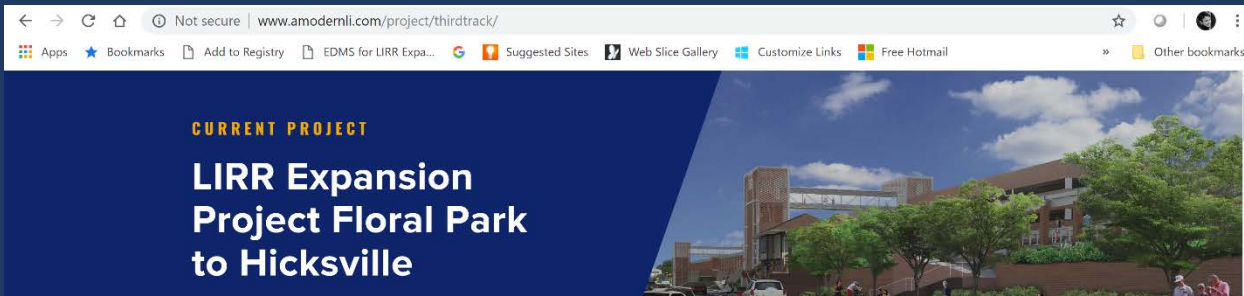
Pou enfòmasyon ki ajou sou pwòje a, tanpri vizite sitwèb nou fèk lanse a nan www.LIRRExpansion.com. Si w ta gen lòt kesyon oswa ou ta renmen pwograme yon reyinyon, tanpri voye yon imèl ban nou nan communityoutreach@LIRRExpansion.com oswa rele liy asistans pwòje a ki ouvri 24 sou 24 nan 516.203.4955.



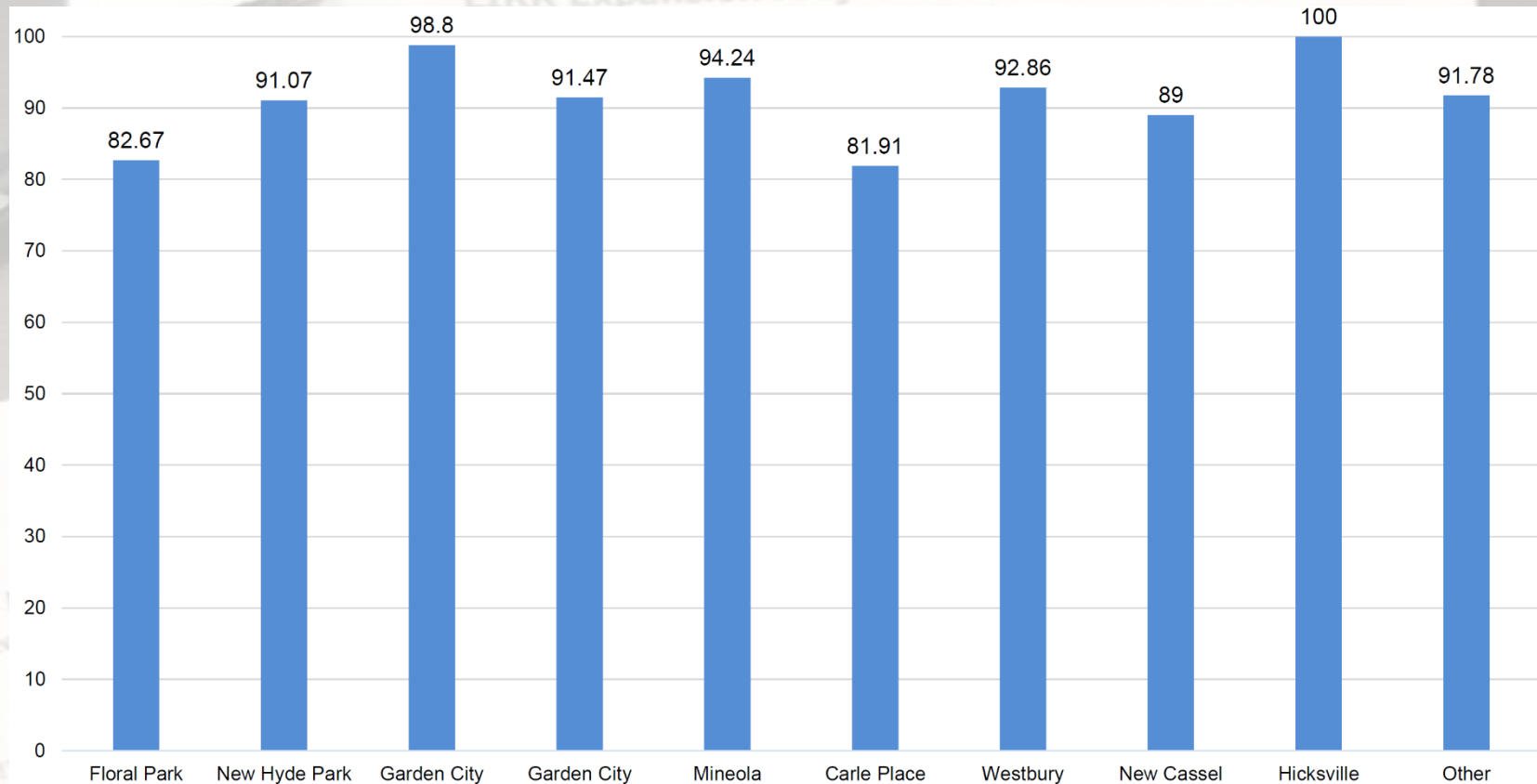
A Modern LI
LIRR Expansion Project
Floral Park to Hicksville

Keeping Communities Up To date

<http://www.amodernli.com/project/thirdtrack/>
<https://lirrexpansion.com/>



Keeping Communities Satisfied



Community Scorecard of Design-Builder Performance



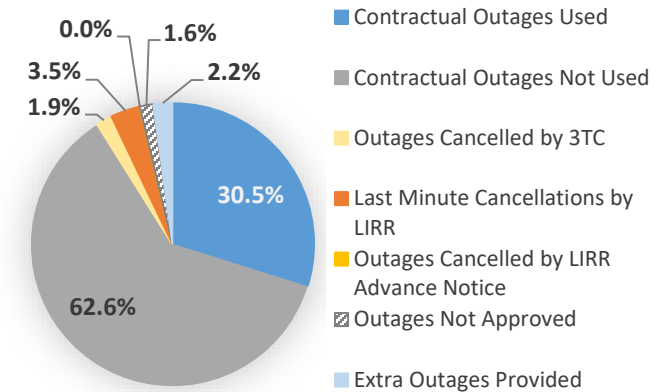
A Modern LI

**LIRR Expansion Project
Floral Park to Hicksville**

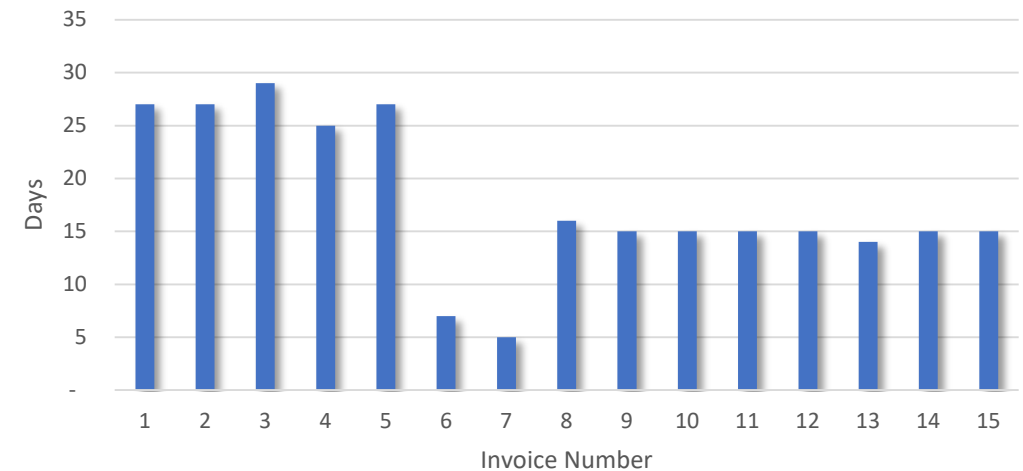
Our Performance

- 98% of all submittals are returned within contract limits
- 9 day average submittal turnaround
- Less than 2% outages cancelled by LIRR
- All invoices received since June 2018 are paid within 15 days

Summary Use of Contractually Available Outages



Invoice Payments



A Modern LI

LIRR Expansion Project
Floral Park to Hicksville