



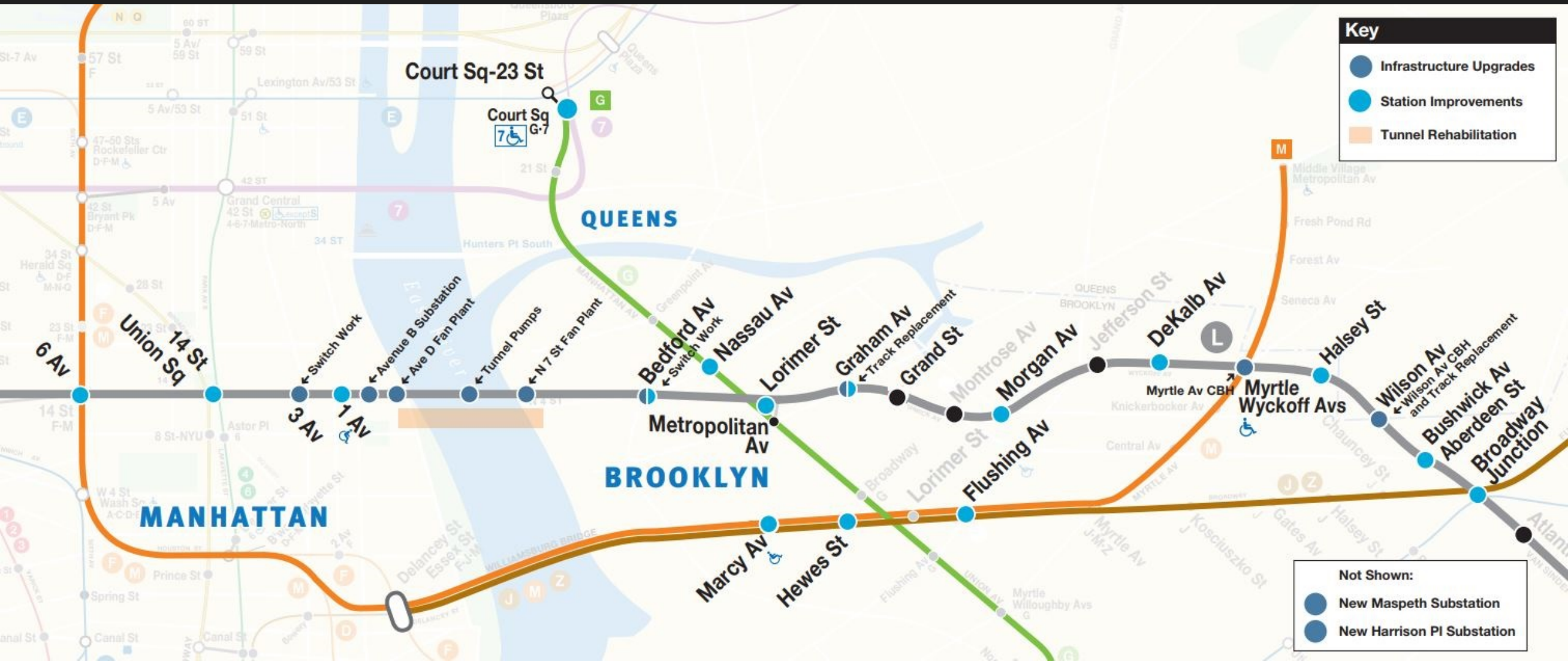
# Canarsie Tunnel Rehabilitation Project

15 April 2019

MTA Transit Committee

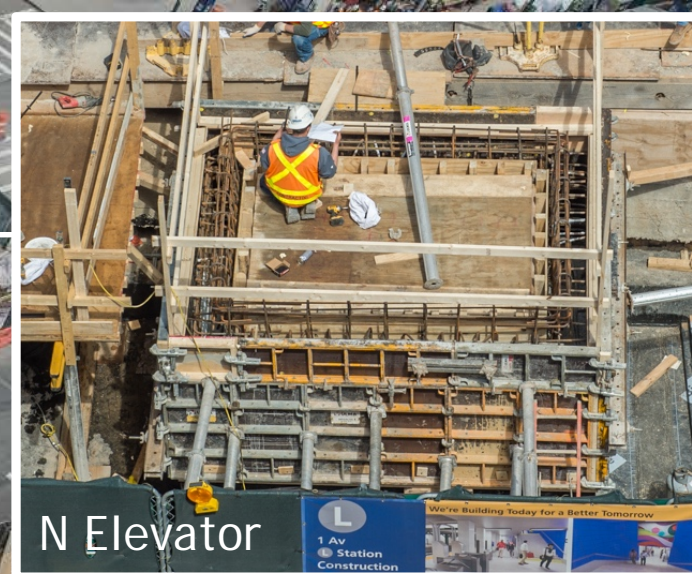
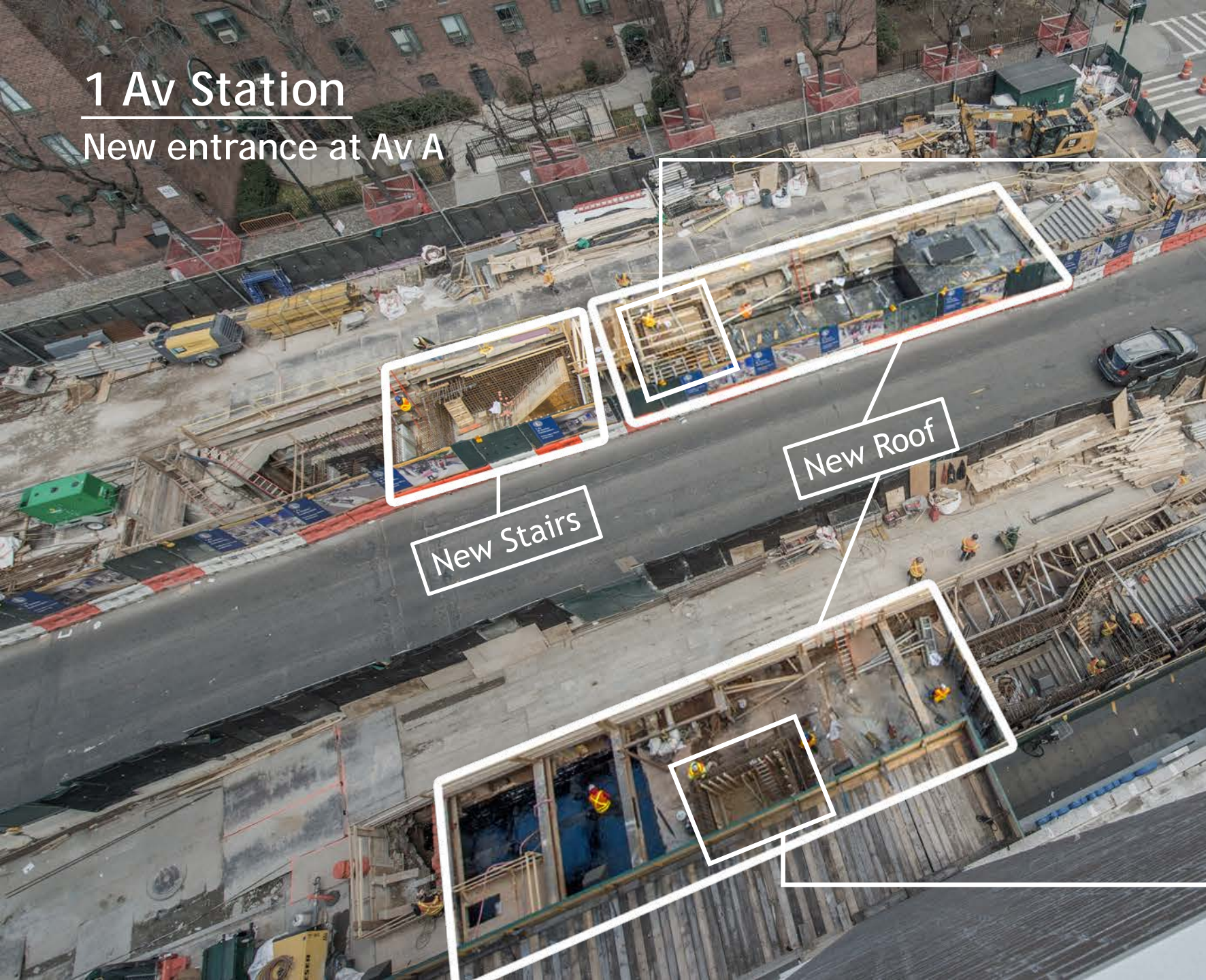
# L Program overview

- Sandy recovery
- Enhanced resiliency
- Core capacity improvements
- Station upgrades



# 1 Av Station

New entrance at Av A



# Av B Substation



# Bedford Av Station

## Vertical Circulation at Bedford Av



# Bedford Av Station

Vertical Circulation at Driggs Av

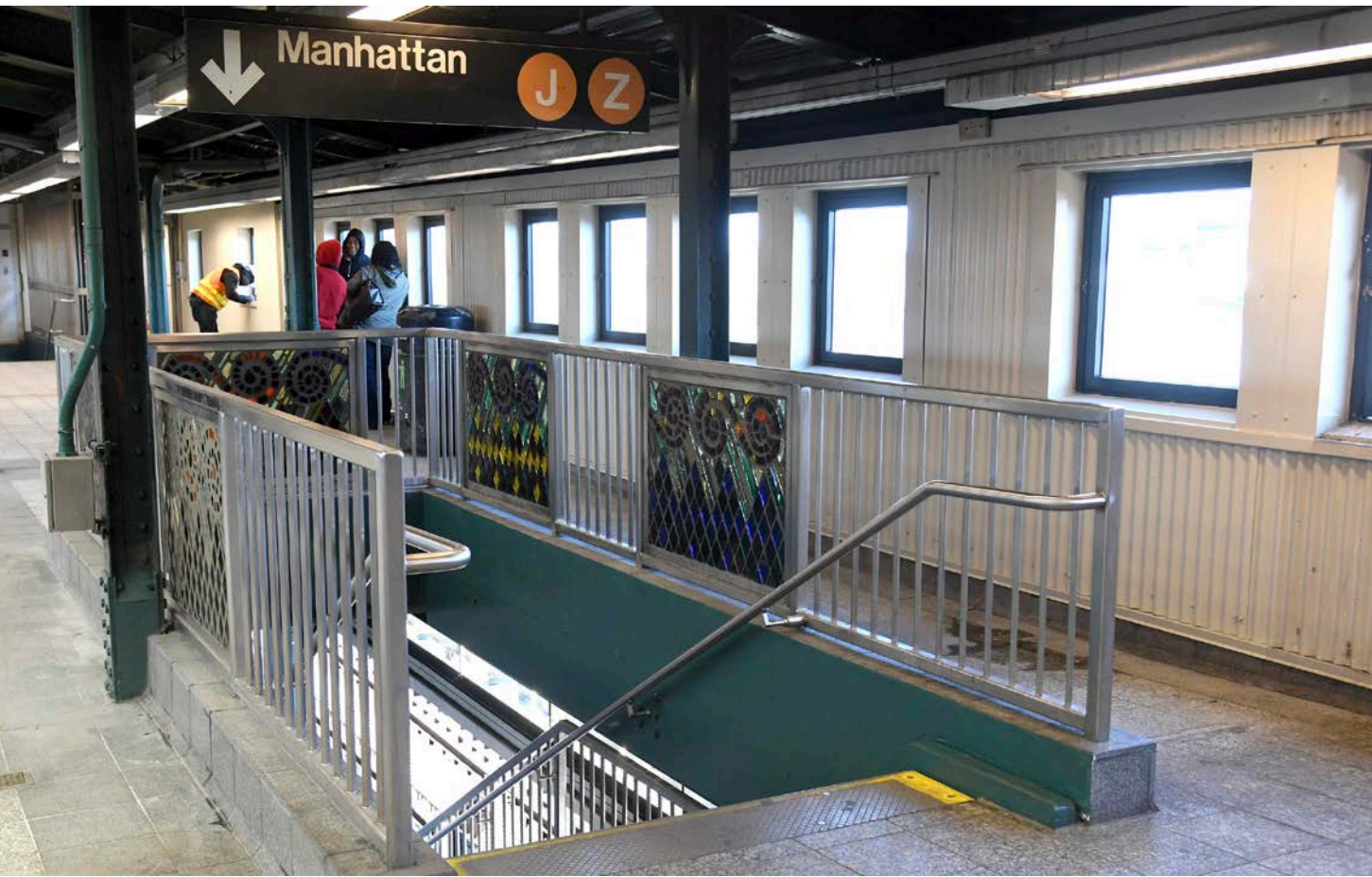


# Broadway Junction

- Improvements complete
- New and relocated stairs

## Marcy Av

- Widened stair open in both directions before the start of L tunnel construction on 26 April





# Canarsie Tunnel Rehabilitation Project

15 April 2019

MTA Transit Committee