

Penn Station Access is a critical transportation equity project which will improve reliability, reduce travel time, and expand mass transit options throughout the region.

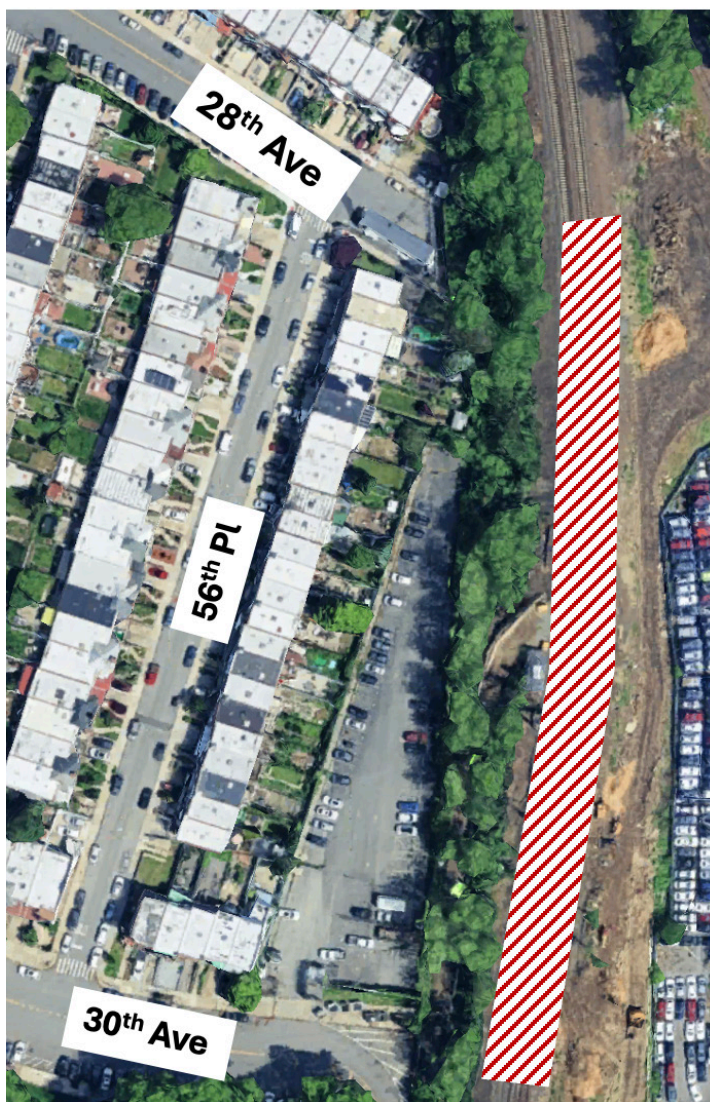
Ongoing Overnight Construction near 56th Place between 30th Avenue and 28th Avenue in Queens through May 2025

The Penn Station Access Project is advancing overnight construction on Amtrak right-of-way (ROW) at the following Queens location through May 2025:

56th Place between and 30th Avenue and 28th Avenue: At this location, we are performing trenching and excavation operations as part of improvements to Gate Interlocking. Work will be performed overnight between the hours of 10:00 PM and 7:00 AM. This work includes the use of mini excavators and hand tools to install new train signals, which will improve the safety and efficiency of trains through this area.

This work must be performed overnight, to maintain existing rail service along the Northeast Corridor, the most heavily used passenger rail corridor in the U.S. Our contractor has a sound mitigation plan in place compliant with NYC Noise Control Code and DEP guidelines. We will continue to update the community to construction changes as work progresses. We appreciate your understanding and patience while we advance this vital transit equity project.

Location of Overnight Track Work



Contact Us

Web: new.mta.info/project/penn-station-access

Email: PSAOutreach@mtacd.org | Hotline: 347-263-7837