



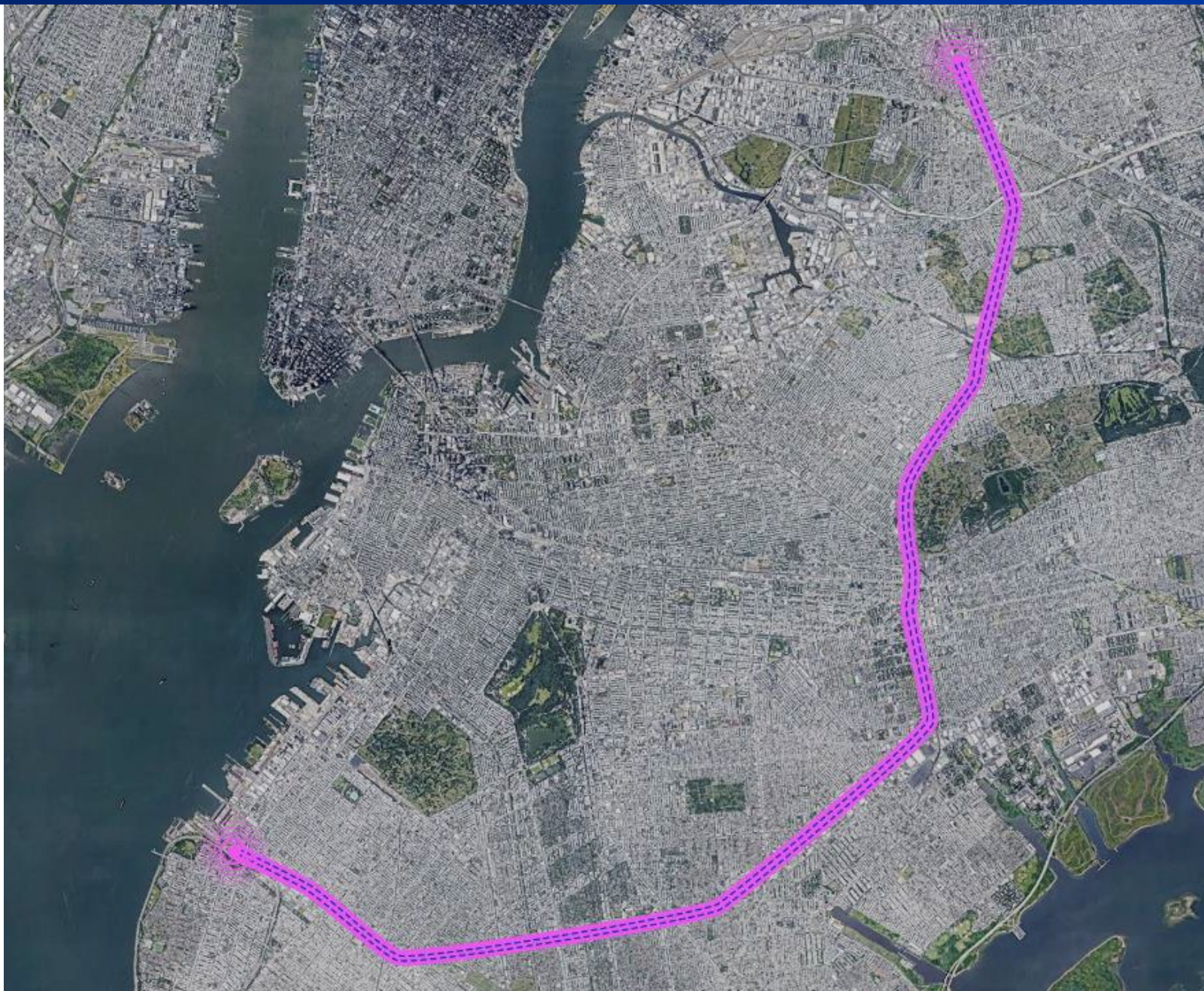
March 31, 2026

Interborough Express

Community Board Briefing –
Queens Community Board 4



Construction &
Development



Agenda

- 01** Introductions
- 02** Project Overview
- 03** Access to Opportunity
- 04** Project Updates
 - Environmental Review
 - Design
- 05** Community Focus Areas
- 06** Next Steps

Project Overview



Project Context

The Interborough Express (IBX) would provide a **transformative new transit connection between Brooklyn & Queens**

- It would be built along an existing rail corridor that runs from Sunset Park to Jackson Heights and is currently used solely for freight
- The IBX would **add passenger service** while preserving freight service
- The Southern portion (~11 miles) is owned by LIRR and operated by New York & Atlantic Railway
- The Northern portion in Queens (~3 miles) is owned by CSX



IBX Station Locations

The current station program was developed to **maximize connections** within MTA networks and major arterial roadways

18

IBX stations

13

IBX stations with subway transfers

17

Subway lines connecting with IBX

A C E N Q R 2 3 5 7 B D F M J Z L

50+

Current bus route connections

LIRR

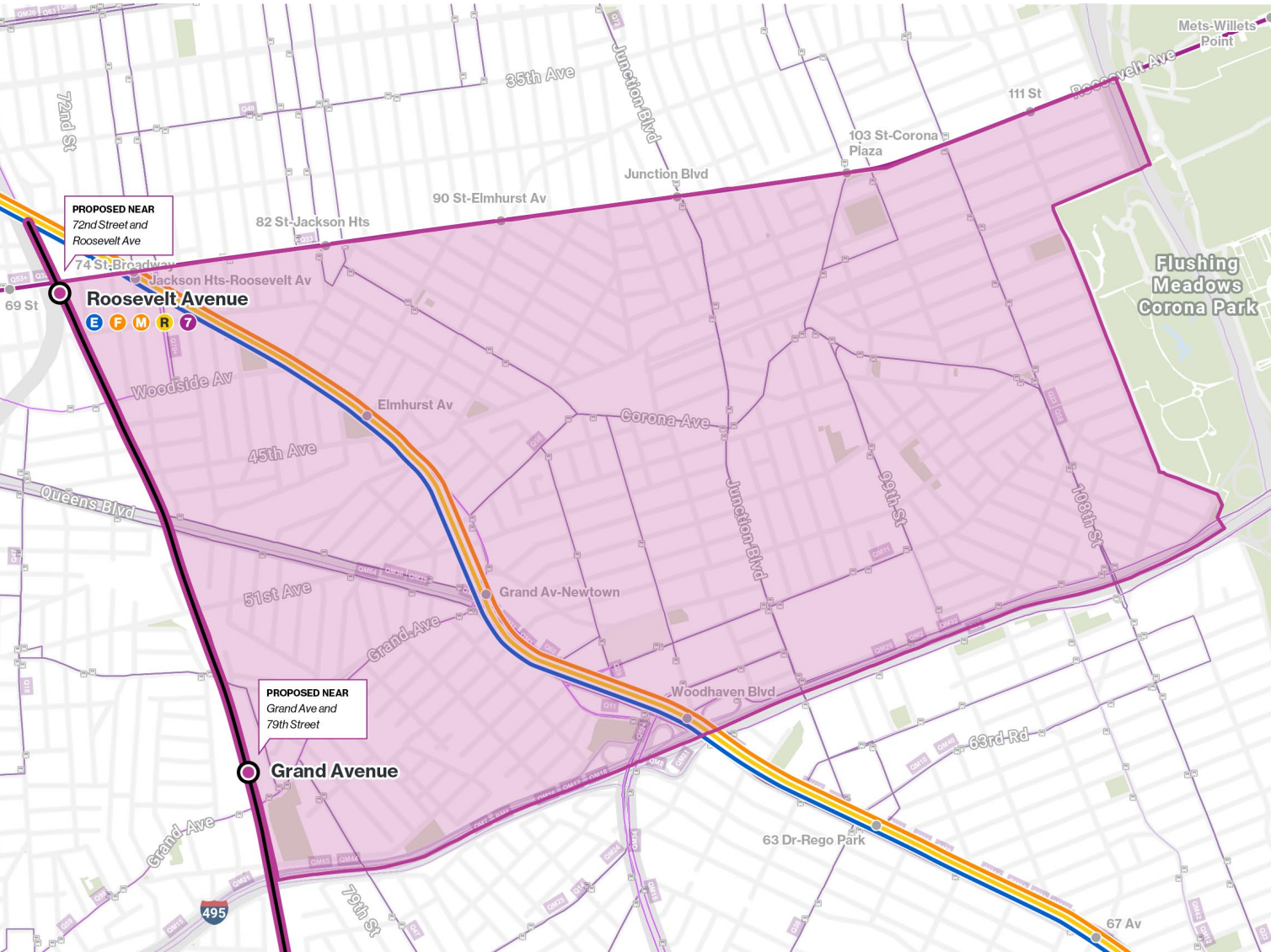
Connections at East New York & Woodside Avenues



Access to Opportunity



Queens Community District 4



Queens Community District 4 is currently served by:

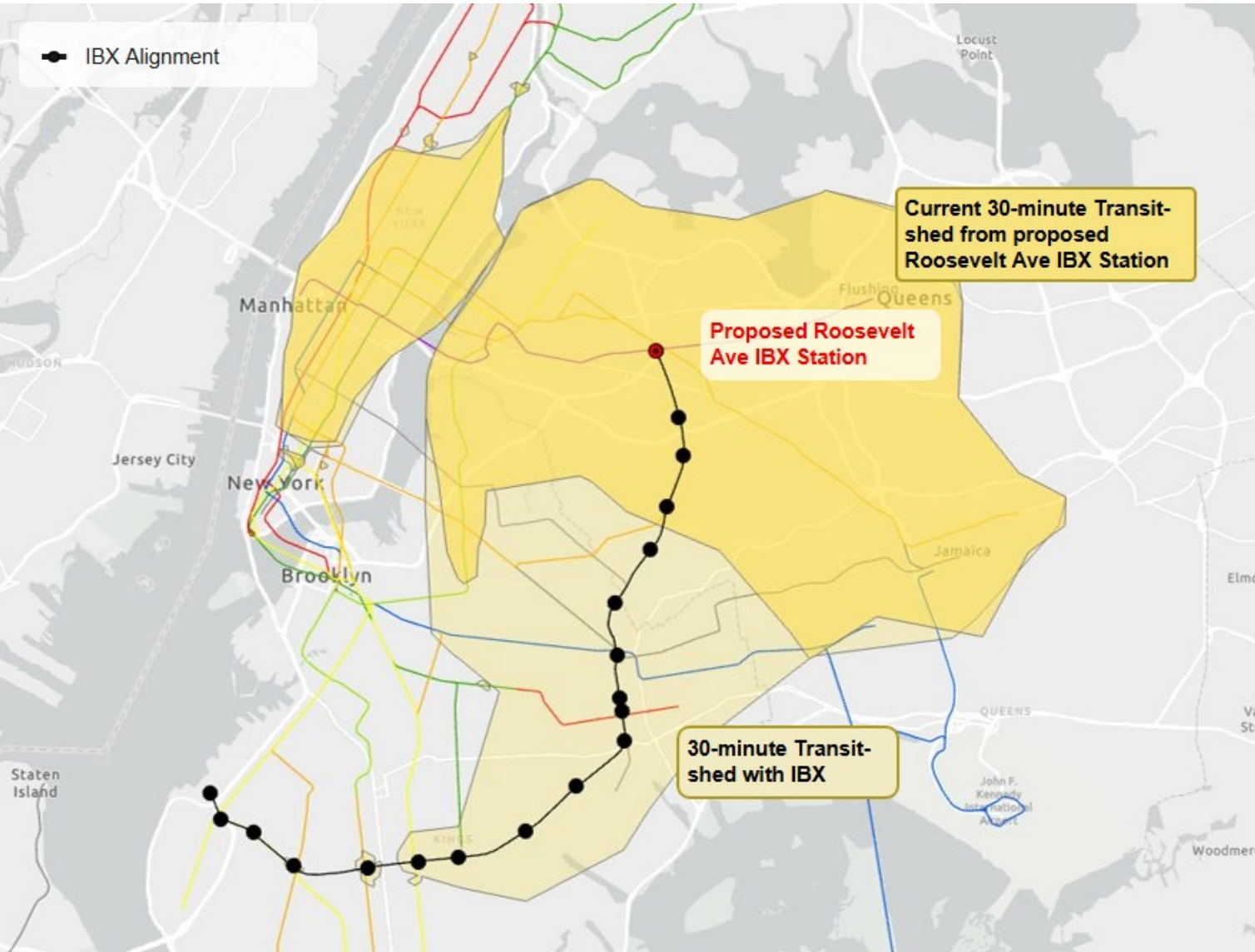
- **25** bus routes (Q11, Q14, Q23, Q29, Q32, Q33, Q47, Q49, Q52+, Q53+, Q58, Q59, Q60, Q70+, Q72, Q88, Q98, QM10, QM11, QM12, QM40, QM42, QM63, QM64, QM68)
- Subway lines (**E** **F** **M** **R** **7**)

IBX will introduce **two stops** at:

- Roosevelt Avenue
- Grand Avenue

Exact station locations subject to change

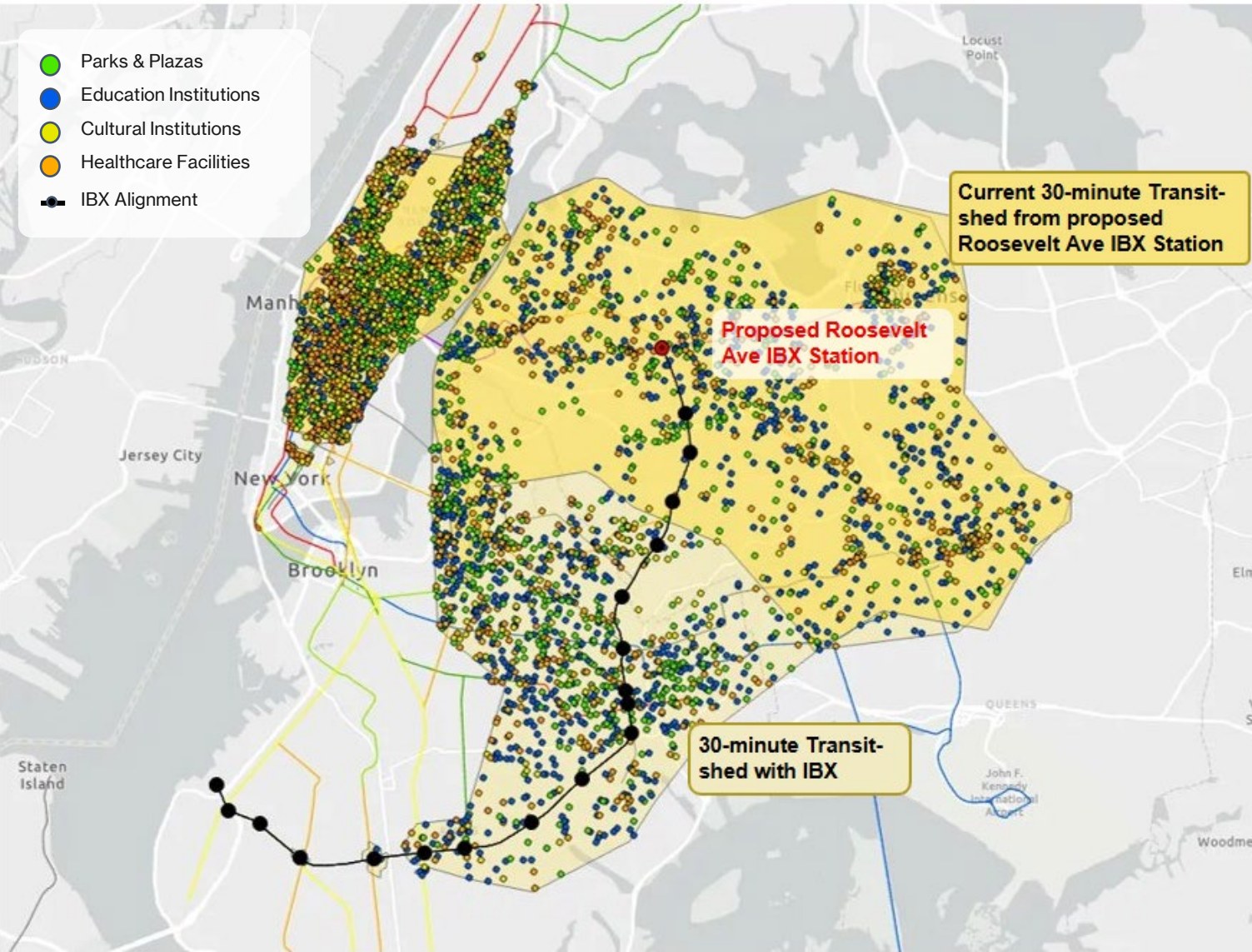
Access to Opportunity: Roosevelt Avenue



IBX expands the land area accessible within a 30-minute public transit trip by **44%**

- **Residents** gain access to employment hubs, amenities, and recreation
- **Businesses** reach larger customer bases and talent pools
- Newly accessible **destinations** include:
 - Flatbush
 - Crown Heights
 - East New York

Access to Opportunity: Roosevelt Avenue



Residents and businesses near **Roosevelt Avenue** will gain access to:

1.1x jobs

From 2.3M to 2.5M

1.5x healthcare facilities

From 841 to 1,229

1.1x higher education institutions

From 60 to 67

1.5x daycare & pre-K

From 1,068 to 1,591

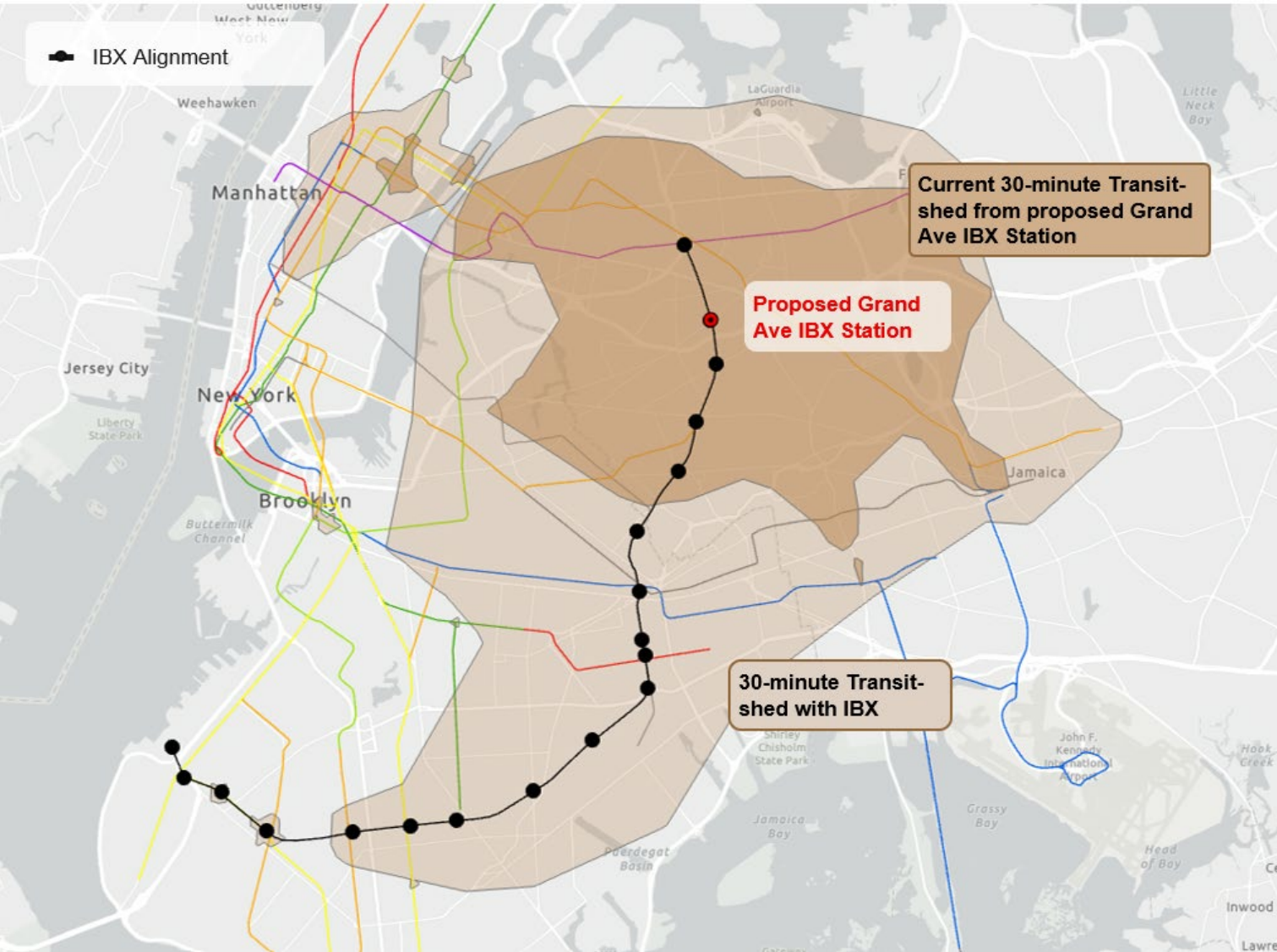
1.2x cultural institutions

From 949 to 1,100

1.5x working age population

From 1.8M to 2.6M

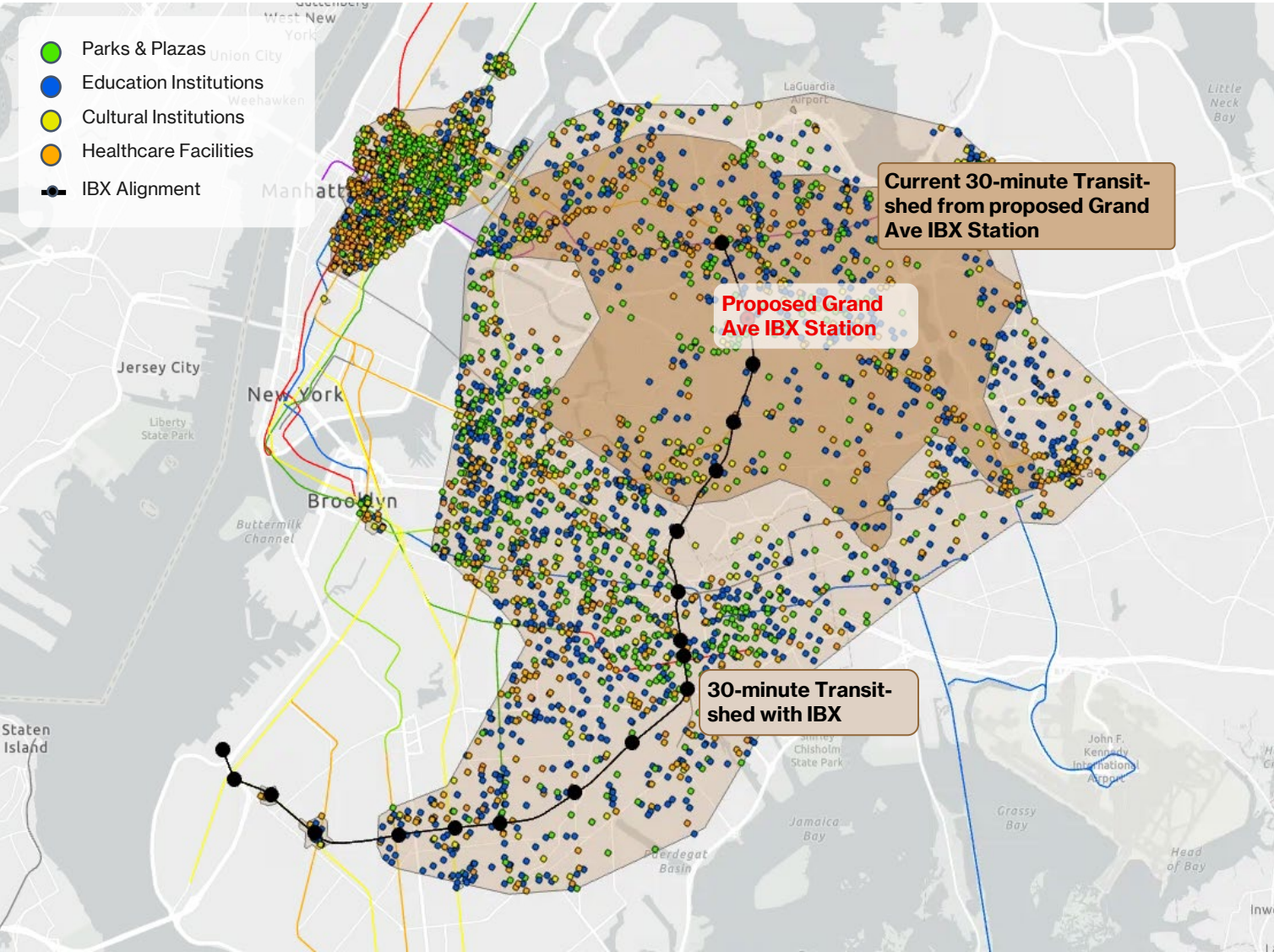
Access to Opportunity: Grand Avenue



IBX **more than doubles** the land area accessible within a 30-minute public transit trip

- **Residents** gain access to employment hubs, amenities, and recreation
- **Businesses** reach larger customer bases and talent pools
- Newly accessible **destinations** include:
 - Downtown Brooklyn
 - Midtown
 - Long Island City
 - Upper East Side
 - Williamsburg

Access to Opportunity: Grand Avenue



Residents and businesses near **Grand Avenue** will gain access to:

4.3x jobs

From 505K to 2.2M

4.5x healthcare facilities

From 223 to 1,012

5x higher education institutions

From 9 to 45

3.4x daycare & pre-K

From 412 to 1,393

5.2x cultural institutions

From 138 to 714

3x working age population

From 764K to 2.3M

Project Updates



Environmental Review



SEQRA Environmental Review

In October 2025, MTA kicked off the environmental review process under the New York State Environmental Quality Review Act (SEQRA)

- MTA completed the Scoping phase in November, hosting two in-person and two virtual Scoping meetings. Over 500 comments were provided.
- Environmental analyses are now underway
- A final Scoping Document will be issued this year, with a Draft Environmental Impact Statement (DEIS) to follow



Property Acquisition

IBX's location **within an existing rail corridor significantly reduces** the need for private property acquisition

- However, a small number of properties will need to be acquired
- MTA is also aware of encroachments into the right of way
- MTA is working to identify these properties and minimize acquisitions to the extent possible
- Acquisition may only begin after the EIS is complete (est. Q4 2026). If acquisition is required, MTA will fully comply with the Uniform Relocation Act and all applicable laws governing the use of eminent domain.



Project Design



Design Process

- MTA has retained an engineering team to **begin design** of the IBX project
- Design is a **two-year process** that includes three workstreams:

Due Diligence
<ul style="list-style-type: none">• Surveys• Geotech• Environmental• Structure inspections

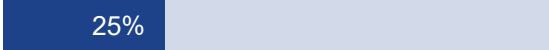

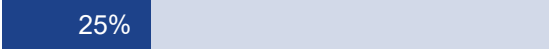
Civil Design
<ul style="list-style-type: none">• Site work• Utilities• Structures• Track work

System Design
<ul style="list-style-type: none">• Stations• Operations facility• Storage yard• Power, train control, communications

- MTA's design team will also assist with procurement of construction contracts

Due Diligence: Pre-Design In Queens

- Pre-design is when **sites are analyzed in detail**
- This work tells MTA about project feasibility – and **changes to earlier assumptions**
- The design team has distributed flyers and contacted properties close to work sites to ensure coordination and minimal disruption

Field Work Underway	Completion
Geotechnical Investigation Evaluates soil, rock, groundwater conditions	 25%
Surveying Models conditions in 3D	 40%
Structures Inspections Assesses integrity of nearby infrastructure, like bridges	 25%



Test Pit Operations on Cypress Avenue

Systems Design: Stations & Urban Realm

Since Fall 2025, MTA's design team has conducted site investigations, developed station prototypes, and analyzed critical factors such as fire and life safety

- **Design is prioritizing** the passenger experience, neighborhood interfaces, accessibility, and connection with other modes of transportation
- This Spring, MTA will host a series of **public workshops** to ask for input on these and related topics:
 - Safety
 - Wayfinding
 - Street lighting
 - Passenger information products
 - Treatments for fencing/barriers



Prototype of Station Entrance (Illustrative Only)

Community Focus Areas



Stormwater Management

As part of design, MTA and their design team are developing a **resilience plan to mitigate stormwater flooding** throughout the corridor

- MTA continues to **meet with NYCDEP** to coordinate stormwater modeling, existing system connection, and future mitigation plans
- Resilience plan design is prioritizing public safety, operational resilience, and impacts to adjacent neighborhoods, particularly during storm events



Track Ponding at Entrance to 65th Street Yard

Electrical Grid Capacity



MTA and their design team are **working with ConEd** to ensure IBX's electrical needs can be met by the existing grid – and that any grid improvements resulting from IBX also benefit communities

- IBX's electrical design is **prioritizing** public safety and resilience, overall impact, and vehicle performance under different conditions
- Upcoming public outreach will ask for feedback on substation architecture to blend with the existing community fabric

Next Steps



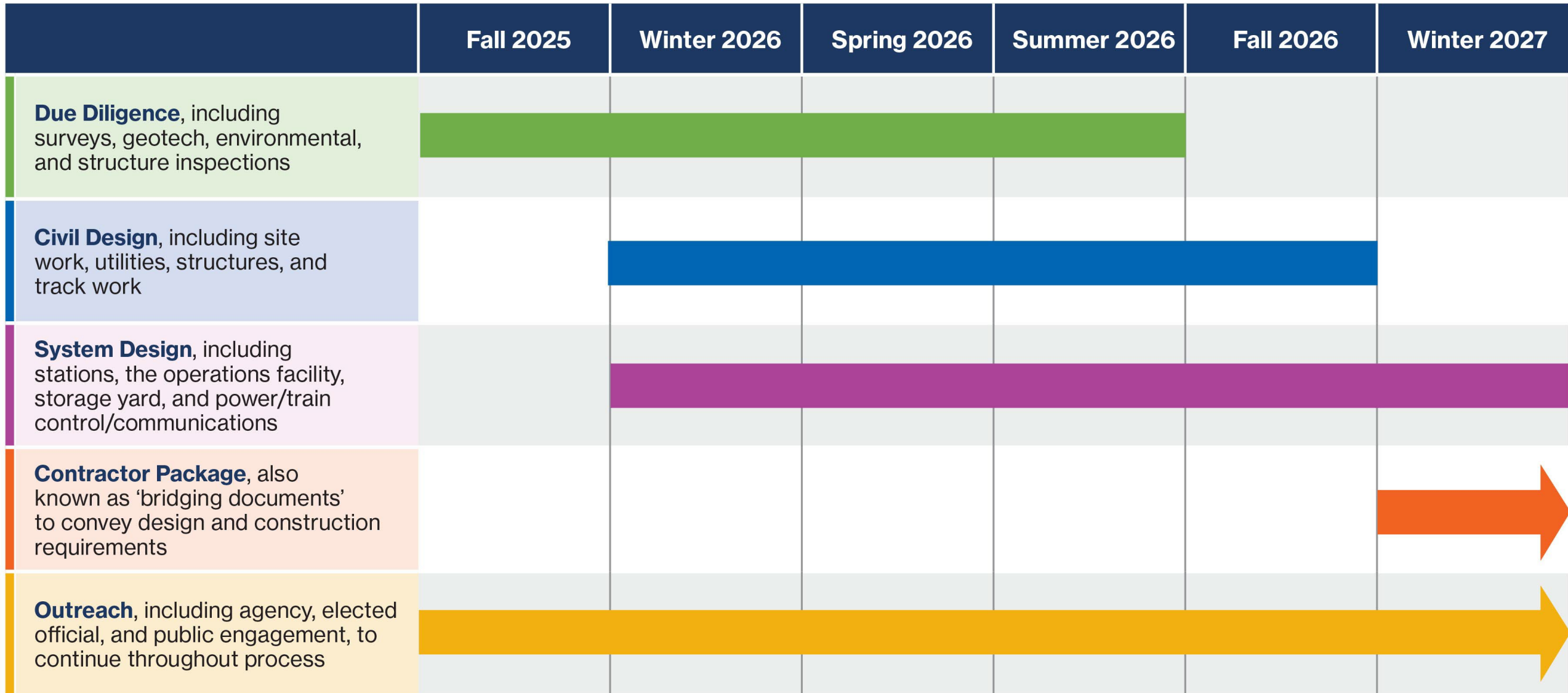
Upcoming Public Outreach



- MTA expects to ask for your feedback at three key stages over the next year:
 - To inform **design decisions**, including about stations, urban realm connections, and vehicle layout
 - To receive formal comment on the **DEIS** as part of New York's SEQRA process
 - To inform the **draft design** concepts developed during preliminary engineering
- MTA welcomes your input on locations, languages, and groups or individuals to include in this outreach
- To date, MTA has hosted: 12 open houses, 10 pop ups, four SEQRA scoping meetings, and quarterly Community Council meetings

Open House at the Queens Public Library in Ridgewood

Next Steps



Q&A



Thank you!





*Scan the QRcode to share
your input!*

We want to hear from you!

Take the IBX survey to share your input on design priorities to help shape the Interborough Express.

Survey available in English and Spanish.