

Second Avenue Subway

NEWSLETTER
February 2025

PHASE 2: EAST HARLEM

Visit the
Second Avenue
Subway
Community
Information
Center!



MTA Second Avenue Subway Community Information Center:

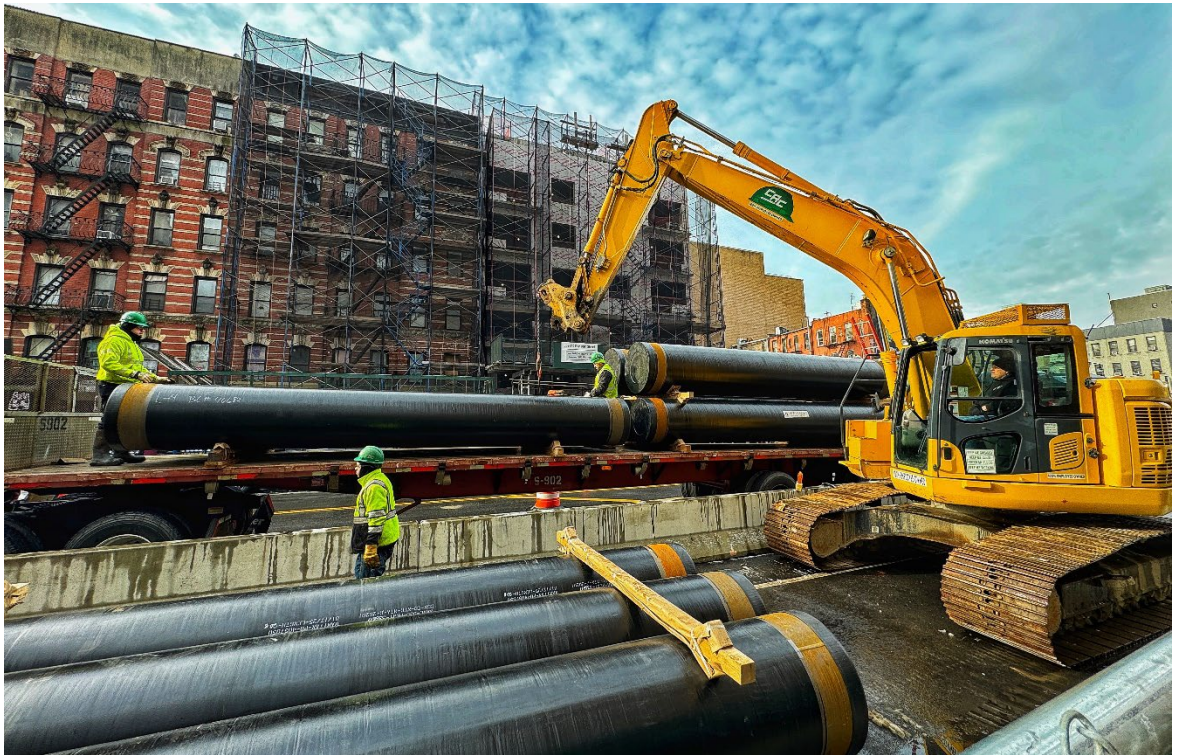
69 E 125th St.
(Between Park & Madison Aves.)
New York, NY 10035
(212) 722-3700
outreach@mtacd.org

Sign Up to Receive Updates!



mta.info/EastHarlem

Upcoming Gas Main Work On Second Avenue



New gas main pipes being unloaded at 106th Street and Second Avenue

In the upcoming weeks East Harlem residents and businesses will see new gas mains being installed throughout the SASP2 Contract 1 corridor along Second Avenue. The installation of these new gas mains is an important step as utility relocation continues for the construction of the new accessible 106th Street station. This will take place on Second Avenue, between 104-108th streets. During this work, traffic will be diverted around the areas where construction is taking place.

The relocation effort will also include upgrading the existing infrastructure which benefits the project by removing an obstacle to the construction of the subway tunnel and benefits the community by extending the useful life of their utilities.

106th St. Construction Advisory Committee



Advisory Committee members receive a status update from the MTA

The Second Avenue Subway Phase 2 Construction Residential Advisory Committee met on January 21, 2025 for a project update about the ongoing construction. The committee reviewed the upcoming work and discussed any concerns brought to the attention of the MTA during the last quarter.

Advisory committee meetings are held quarterly with leaders who have a more than one to one reach in the community. Attendee members include tenant and co-op board presidents, organizational leaders and business owners with locations along the project alignment. During committee meetings, information and updates are provided regarding the status of the project. Organizations and groups that are not part of the advisory committee can receive a project update at their location by contacting the outreach team at 212-722-3700.

Keeping You Informed

The Benefits of the New 106th Street Station



Conceptual rendering of SASP2 entrance at northeast corner of 106th St. and Second Avenue

Expanding Access To Transit

Phase 2 of the Second Avenue Subway Project is making good on a promise to provide new and improved transit options for the residents of East Harlem since the removal of the 2nd and 3rd Avenue elevated trains in the 1940s and 50s. The Second Avenue Subway will be the **ONLY** subway line to create a one-seat ride from East Harlem to West Midtown, Times Square, Chinatown, and out to Coney Island.



Time Savings:

East Harlem and Bronx residents who ride the Second Avenue Subway will benefit from reduced travel time, saving an estimated 20 minutes a day, 7.2 hours per month, adding up to 3.5 days per year.



New Design:

Each station will be bright, comfortable, and modern, with low vibration tracks, and public art works that reflect the artistic culture of East Harlem.



Fully Accessible:

The new East Harlem stations will be built with entrances that include fully accessible elevators and escalators—creating greater travel mobility for seniors and people of all abilities.



Revitalized Streetscape:

The project will provide a revitalized surface streetscape complete with new sidewalks, trees, and public areas, enhancing Second Avenue as a vibrant commercial and pedestrian corridor in East Harlem.



Travel Mobility:

The stations will also feature the latest in technological advancements, including cellular and Wi-Fi coverage throughout—and digital signage that provides real time information about train departures.



A One-Seat Ride:

The Second Avenue Subway will be the only subway line to create a one-seat ride from East Harlem to West Midtown, Times Square, Chinatown, and Coney Island Brooklyn.

An early and comprehensive community outreach effort was initiated in 2018 with the opening of the SAS Phase 2 Community Information Center at 69 East 125th Street in the center of Harlem. Through interactive programming, community meetings, and presentations, the community outreach team is bringing the story of the Second Avenue Subway to the East Harlem Community.



**Visit the Second Avenue Subway
Community Information Center!**



69 E 125th St.
(Between Park & Madison Aves.)
New York, NY 10035



(212) 722-3700



outreach@mtacd.org