

# Second Avenue Subway Phase 2

Community Board 11  
Second Avenue Subway Task Force  
February 3, 2025



Construction and Development

# Second Avenue Subway Project Overview





# Contract 1 Scope of Work

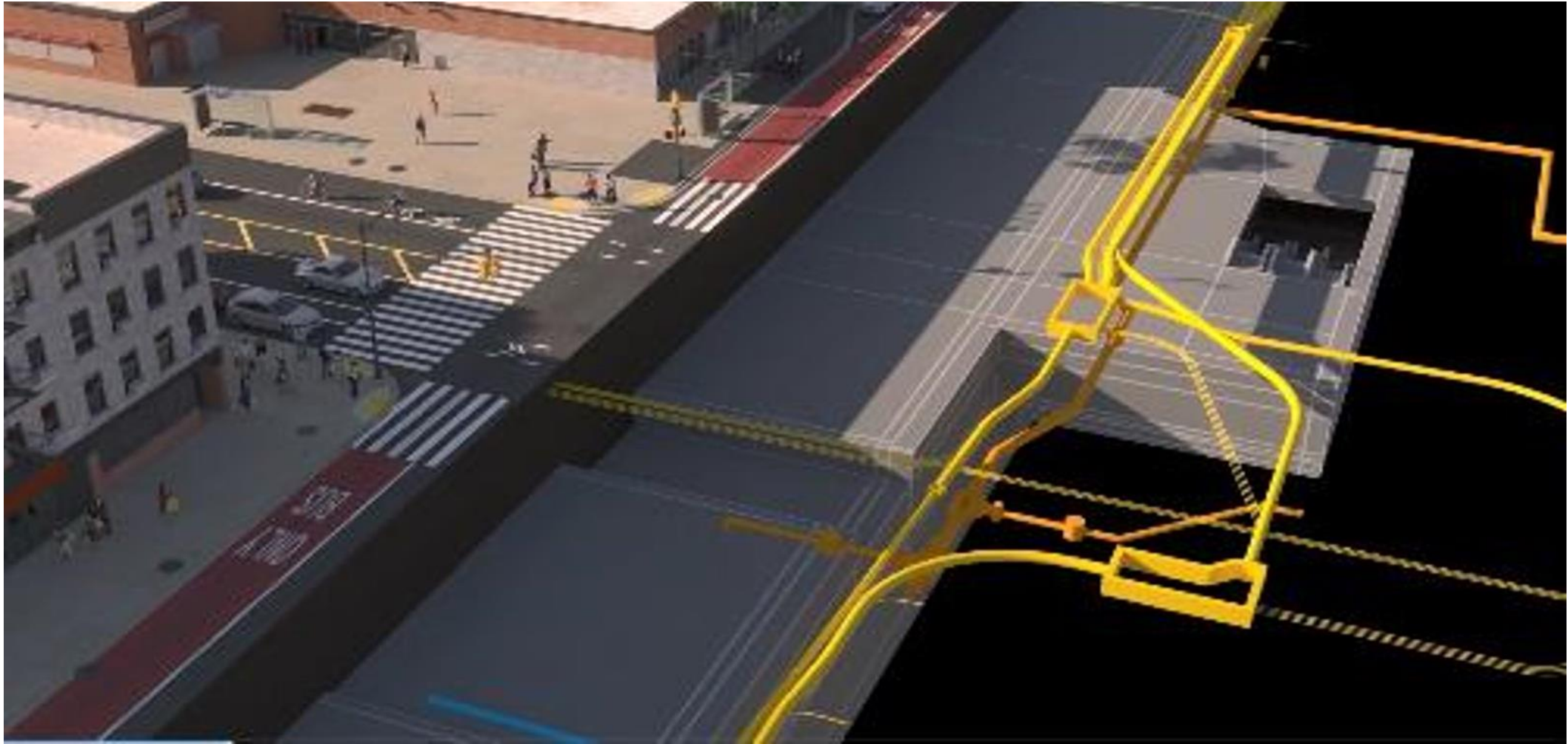
- Instrumentation- Seismic/Air/Noise
- Building Remediation / Underpinning
- Utility Relocation
- MPT
- Environmental / Hazardous Material Work



# 106<sup>th</sup> Street Utilities Before



# 106<sup>th</sup> Street Utilities After



# 106th Street Station Area

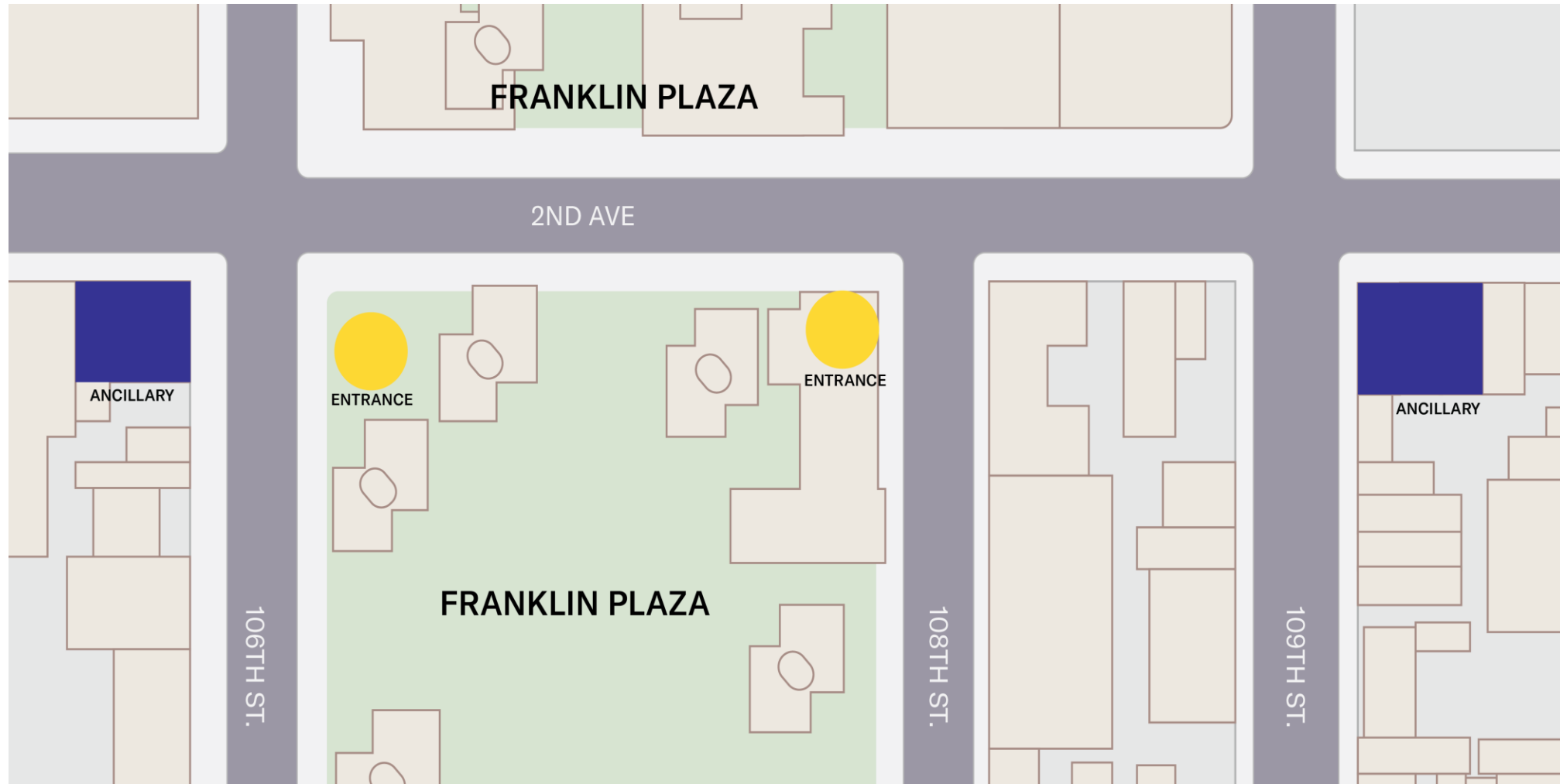
## LEGEND



PROPOSED ENTRANCES



PROPOSED ANCILLARIES



# 106th Street Station Entrance 1 (ADA)



# Construction Completed Since Last Meeting



Construction & Development

## Work Completed in Q4 2024

- Utility Relocation Test Pits
- Identification of water main infrastructure throughout the alignment
- Some Relocation of electrical conduit
- Installation of manhole infrastructure
- West side sidewalk cutbacks completed and MPT removed
- Teacher parking area expanded and relocated (109<sup>th</sup> and 110<sup>th</sup> Street)
- Installation of electrical vaults



# Work Completed 106<sup>th</sup> Street



These images illustrate water main work and electrical conduit work on 106th St.

# Work Completed 108<sup>th</sup> Street



Electrical Conduit Installation



Electrical Conduit Installation



# Work Completed 109<sup>th</sup> Street



109th Street – 2nd & 3rd Avenue- Water main work



109th Street - 1st & 2nd Avenue- Electrical Duct

# Work Completed 111<sup>th</sup> Street



Electrical Conduit work at 111<sup>th</sup> and Second Avenue

# Contract 1 Upcoming Work



Construction & Development

# Updated Project Sequencing

- Cut back work on the east side of 2<sup>nd</sup> Avenue moved to later in 2025
- Sewer, gas, and electric, install on west side of 2nd Ave. from 106<sup>th</sup> to 109<sup>th</sup> Streets moved up to early 2025 (Tentative)
- Sewer, gas, and electric, install on the east side of 105th Street moved up to early 2025 (Tentative)
- Side street utility 2026 relocation work moved up to 2025
- Building stabilization moved out to late 2025

Sequencing changes intended to maintain overall project scheduling



# Protective Measures- MPT SETUP

## Second Avenue

- Maintain 2-4 lanes of traffic

## Major Cross Streets (106<sup>th</sup> Street)

- A 13' wide shared lane in each direction
- A separate left turn lane to be provided

## Minor Cross Streets

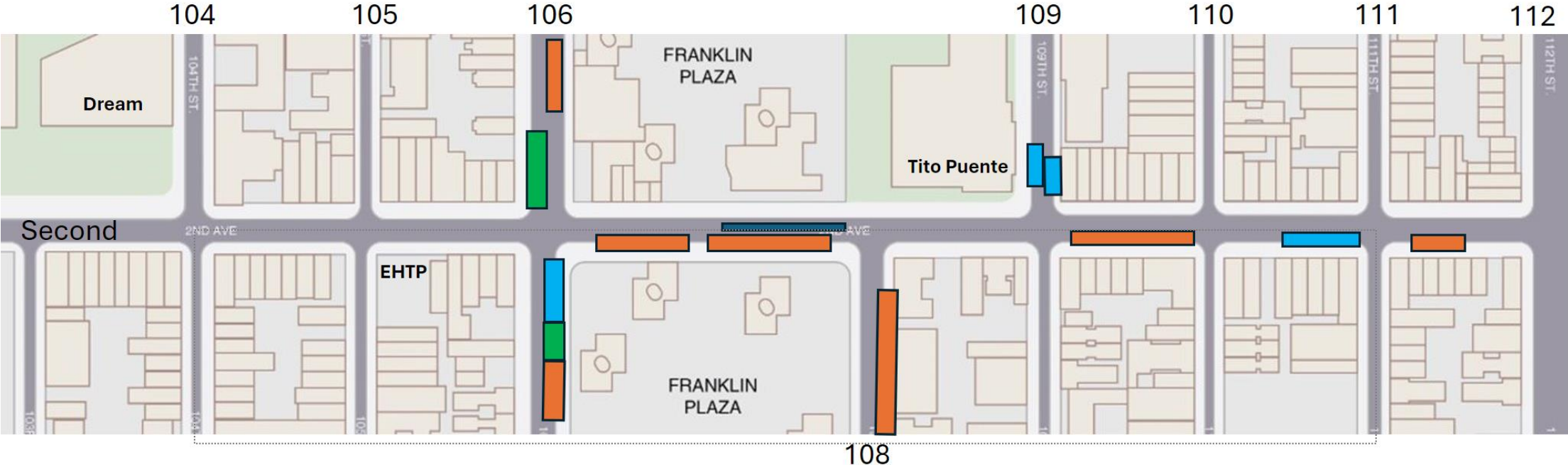
- A 13' wide travel lane to be provided

**Min. 7' wide sidewalk/pedestrian walkway to be provided at all times**

**Second Avenue - West side sidewalk currently at 10'**



# Existing MPT/Work Areas



- Lay Down- Upcoming
- MPT-Lay Down Area
- Electrical
- Watermain

January 27, 2025



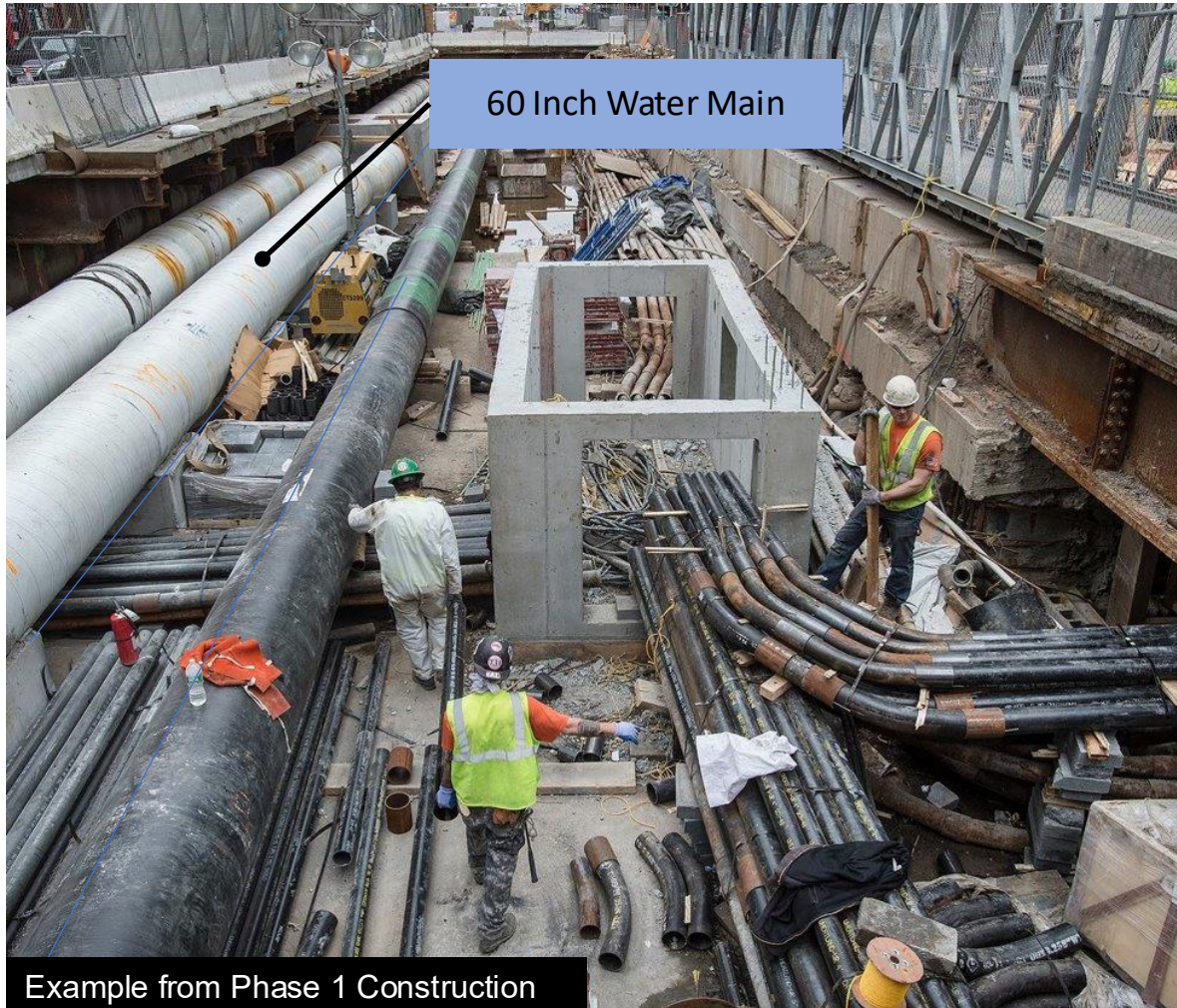
# An Example of Upcoming Electrical Work



Newly installed electrical conduit along the alignment. This work will be replicated throughout the project area.



# Example of Upcoming 60 Inch Water Main Work



Upcoming 60-inch water main work on Second Avenue at 105<sup>th</sup> Street will be cut and cover roadway construction

Coordination with residents, East Harlem Tutorial School, Park East High School and local merchants

# Monitoring Equipment



Air Quality Monitor



Noise Monitoring Device

# Best Practices From Phase 1

Good Neighbor Initiative



Construction & Development

# Good Neighbor Initiative

- Good Neighbor Initiative (GNI), where MTA will monitor and grade contractor performance to address quality of life issues.
- MTA is committed to minimizing impacts on the East Harlem community by utilizing best practices from Phase 1 and other projects. We are starting this utility work early to minimize potential budget and schedule delays based on unknowns.
- Pedestrian Managers will be assigned to help the community navigate intersections impacted by work.
- We have made a concerted effort to reduce our street level footprint by using space we have acquired to work from and stage equipment in, which is less impactful to traffic and community.
- As work progresses there will be a comprehensive building, air quality, and noise monitoring plan to ensure this project can be delivered safely for the residents of East Harlem.



# Provide Information Bulletin Boards Along The Alignment



# Support Local Businesses – With Wayfinding Signs/Banners

DATE: \_\_\_\_\_ DATE: \_\_\_\_\_

CORRECTED: \_\_\_\_\_ VERIFIED: \_\_\_\_\_

DATE: \_\_\_\_\_ DATE: \_\_\_\_\_

CHECKED: \_\_\_\_\_ BACK CHECKED: \_\_\_\_\_

SUBMITAL: \_\_\_\_\_ DATE: \_\_\_\_\_

ORIGINATOR: \_\_\_\_\_

**NO OIL GANNING**

**1 ELEVATION**  
NTS

**LAYOUT**  
NTS

**ISOMETRIC**  
NTS

**1 PLAN**  
NTS

**1 MOUNTING BRACKET DETAIL**  
NTS

**SAMPLE NEIGHBORHOOD WAYFINDER SIGN DETAIL**  
NTS

**2 ELEVATION**  
NTS

**2 PLAN**  
NTS

**SAMPLE WINDSCREEN GRAPHICS**  
NTS

**SAMPLE WAYFINDER SIGN GRAPHICS**  
NTS

COORDINATION WITH THE COMMUNITY OUTREACH TEAM.

- SIGN DECAL AND WINDSCREEN TO BE FURNISHED AND INSTALLED BY THE CONTRACTOR. ACTUAL GRAPHIC DESIGN SERVICES DIGITAL ARTWORK TO BE PROVIDED BY THE AUTHORITY.
- SIGNS AND WINDSCREENS SHALL BE MAINTAINED IN GOOD CONDITION FOR THE DURATION OF THE CONTRACT. WORN, DAMAGED OR DEFACED EQUIPMENT SHALL BE REPAIRED, CLEANED OR REPLACED TO THE SATISFACTION OF THE ENGINEER.
- SAMPLE WINDSCREEN SPECIFICATIONS PROVIDED. VARIATIONS MAY BE USED WITH ENGINEER APPROVAL. SAMPLES SHALL BE PROVIDED TO THE ENGINEER PRIOR TO INSTALLATION.
- ON THE SIDEWALK SIDE, 60% OPEN MESH SHALL BE USED FOR MORE TRANSPARENCY, WHILE THE STREET SIDE SHALL BE 37% OPEN MESH FOR BETTER LEGIBILITY OF EACH STORE'S INFORMATION. THE SOUTHERN MOST PANEL ON THE STREET SIDE SHALL NOT BE WRAPPED TO MAINTAIN SIGHTLINE FOR ONCOMING TRAFFIC. ANY AND ALL QUESTIONS REGARDING WINDSCREEN PLACEMENT SHALL BE DETERMINED BY THE COMMUNITY OUTREACH TEAM.
- METAL CROCKETS FOR FASTENING TO FENCE TO BE INSTALLED AT 12" ON CENTER ON VERTICAL PLANE AND 24" ON CENTER HORIZONTAL.
- FURNISH AND INSTALL DECAL GRAFFITI PROOF LAMINATE TO BE APPLIED ONTO METAL SIGN.

SIDEWALK SIDE 60% OPEN MESH	
TOTAL WEIGHT	6.02/YD <sup>2</sup>
BASE FABRIC	POLYESTER 1000x1000, 6x6/INCH
TENSILE STRENGTH	300.1x259.8 LBS/2"
TEAR STRENGTH	59x54 LBS
COLD CRACK	AT -4 F
WIDTH	197 IN.
REMARKS	WARP / WEFT
AIR FLOW	60/40

STREET SIDE 37% OPEN MESH-ULTRA MESH PLUS DETAILS	
SUPPORT CLOTH TOTAL WEIGHT	POLYESTER
YARN DTEX	1000x1000
TYPE OF COATING	PVC
TOTAL WEIGHT	8.02/YD <sup>2</sup>
TENSILE STRENGTH	160x160 LBS/IN
TEAR STRENGTH (WARP/WEFT)	67x67 LBS
FLAME RESISTANCE	TESTING IN PROGRESS
LOW TEMPERATURE (NO CRACK AT)	-22°F
RF WELDABLE (HEAT SEALABLE)	YES
AIR PERMEABILITY (200 PASCAL)	2650MM/SEC
FUNGUS RESISTANT	TREATED

DISCIPLINE: \_\_\_\_\_

ORIGINATOR: \_\_\_\_\_

DATE: \_\_\_\_\_

**SASZ** Phase 2 Partnership  
CIVIL & UTILITIES ENGINEERING

**MTA** CONSTRUCTION & DEVELOPMENT  
NEW YORK CITY TRANSIT

CONTRACT C-26201

**UTILITY RELOCATION AND BUILDING REMEDIATION 106TH STREET STATION**

DRAWING TITLE: **MPT MISCELLANEOUS DETAILS SHEET 3 OF 4**

SCALE: AS SHOWN DATE: 04/30/2020

DRAWING NO: **GEN-CM0013**

REVISION: \_\_\_\_\_ SHEET NO. \_\_\_\_\_

IF A HOLDER OF THE PROFESSIONAL LICENSE LAW FOR ANY PROFESSION TO EXERCISE THE SAME, HE OR SHE MUST BE A LICENSED PROFESSIONAL ENGINEER OR ARCHITECT IN THE STATE OF NEW YORK, AND HIS OR HER NAME AND TITLE MUST BE PRINTED ON THE DRAWING. THE SIGNATURE OF THE CONTRACTOR OR SUBCONTRACTOR SHALL BE PRINTED ON THE DRAWING. THE SIGNATURE OF THE CONTRACTOR OR SUBCONTRACTOR SHALL BE PRINTED ON THE DRAWING. THE SIGNATURE OF THE CONTRACTOR OR SUBCONTRACTOR SHALL BE PRINTED ON THE DRAWING.

DATE: 5/7/2020 10:36:27 AM Michael.Sabatino #P1.TD704 #PENTIL.S4



# Small Business Outreach

# Coordinating With Local Organizations

- Develop personal working relationships with local merchants
- Discuss with NYC SBS about existing programs to provide assistance to local merchants
- Coordinating with local economic development organizations located throughout the commercial corridor in support of local businesses
- Work with local merchants to develop a marketing strategy along the commercial corridor – For example: Support Second Avenue, East Harlem Strong, Second Avenue Strong, Shop Second Avenue
- Develop wayfinding signs highlighting local businesses
- Produce graphic materials such as fence wrapping and wayfinding promoting Second Avenue Merchants



# Store Report – Current Project Area

- A quarterly report on the turnover or vacancies on the commercial corridor along the alignment
- Monitor how East Harlem neighborhood retail is doing
- Create a comparison between the project area and the wider neighborhood
- Identify areas along the construction corridor with turnover



# Coordination with City Agencies

Bi-weekly inter-agency coordination meetings with the Mayor's office to facilitate project deliverables with various agencies

Coordination with city and state agencies including but not limited to:

NYC Department of Environmental Protection

Con Edison

NYC Department of Transportation

DOHMH

NYC Department of Buildings

NYCSBS

NYC Department of Sanitation

NYC Police Department

NYC Fire Department



# Community Outreach

Keeping the Community Informed



Construction and Development



**A Grass Roots Approach**

**Held Over 460 Outreach Meetings To Date**

**Community Outreach Center on 125th Street**

# Advisory Committee Meetings



## Committee Highlights

- Members: Residents and Business Owners with greater than one to one reach
- Address community concerns
- Quarterly Meetings
- Committee will function for the duration of the project
- Reports Coordinated with CB 11 SAS Task Force



# Keeping You Informed Throughout the Project

The Community Outreach Team will continue to meet and inform community members about project milestones and provide notifications on how the project will impact the community.

- Pop Up Events
- Public Posting of Construction Notices
- Monthly Newsletters
- Merchant Advisory
- Resident Advisory
- Weekly Eblasts
- Coordination with CB 11 SAS2 Taskforce
- Quarterly Construction Advisory Committee (CAC) Meetings
  - Residential
  - Retail/Education/Organizations



# Community Outreach Contacts

## Joseph O'Donnell

Director, Public Affairs  
MTA Construction & Development  
[Joseph.O'Donnell@mtacd.org](mailto:Joseph.O'Donnell@mtacd.org)

## Hector Santana

Project Manager, Community Outreach  
Second Avenue Subway Community Outreach  
[Hector.Santana@mtacd.org](mailto:Hector.Santana@mtacd.org)

Second Avenue Subway Community Outreach

**Alex Zamudio,**  
**Gregory Nyman**  
**Fred Cannizzaro**

Second Avenue Subway  
Phase 2 Community Information Center  
**69 East 125<sup>th</sup> Street**  
212-722-3700  
[outreach@mtacd.org](mailto:outreach@mtacd.org)

## Hours of Operation

Monday - Friday  
9AM- 5PM

## 24-hour Hotline

212-693-9520



# Questions?

Sign up for our E-Newsletter



Construction & Development