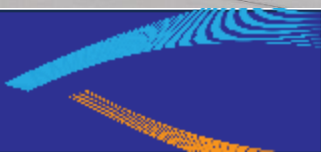


106 St Subway Station

Elevator to Mezz → Q



Construction & Development





Second Avenue Subway Phase 2

Merchant Construction Advisory Committee – May 20, 2025

Second Avenue Subway Phase 2

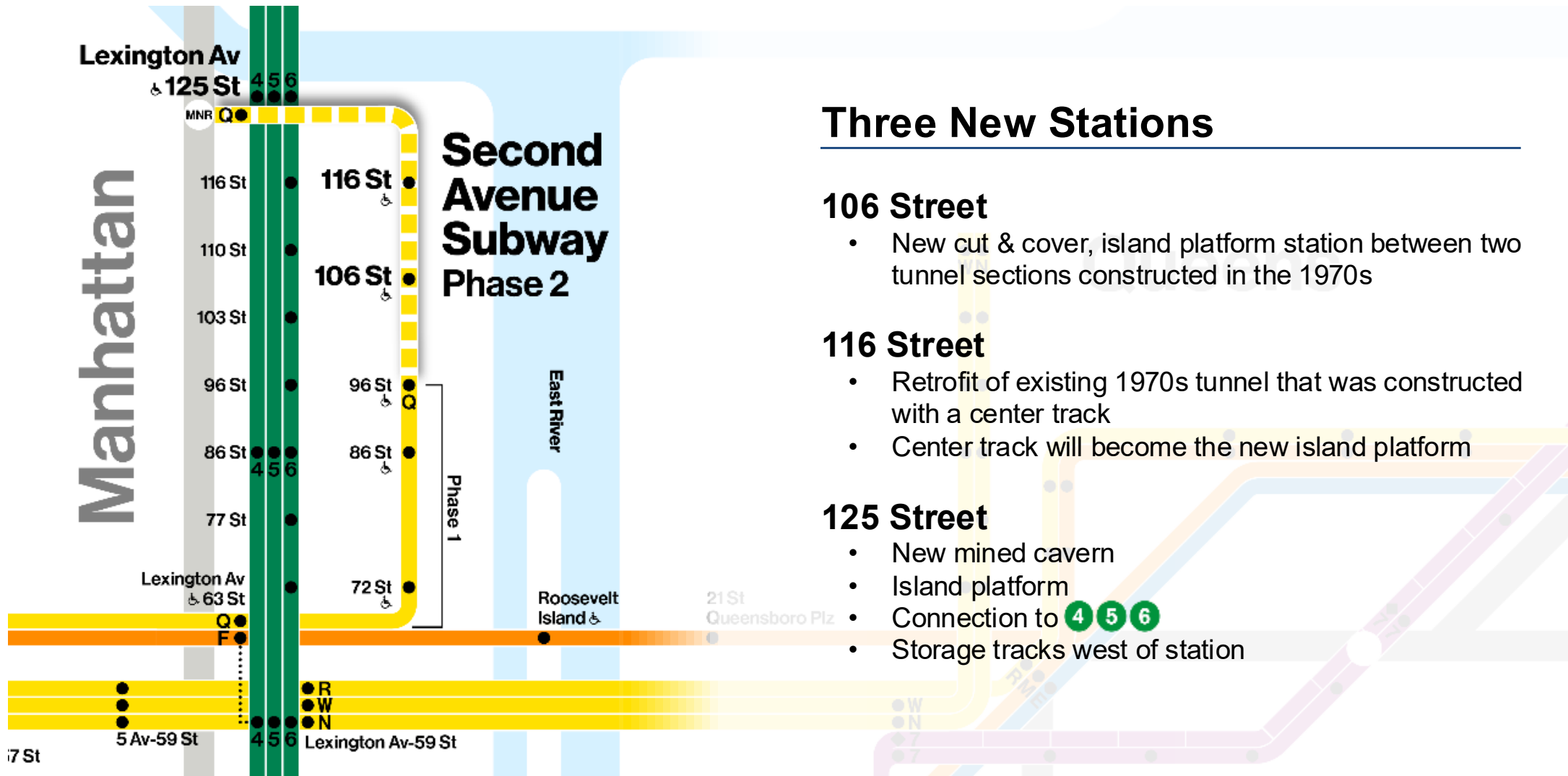
Contract 1: Utility Relocation and Building Remediation

Merchant Construction Advisory Meeting Agenda

1. Introductions
2. Project Overview
3. Work completed since last meeting
4. Upcoming work 2025
5. Working with the Community (GNI)
6. Questions



Phase 2 – Extension of Q Line



Three New Stations

106 Street

- New cut & cover, island platform station between two tunnel sections constructed in the 1970s

116 Street

- Retrofit of existing 1970s tunnel that was constructed with a center track
- Center track will become the new island platform

125 Street

- New mined cavern
- Island platform
- Connection to 4 5 6
- Storage tracks west of station

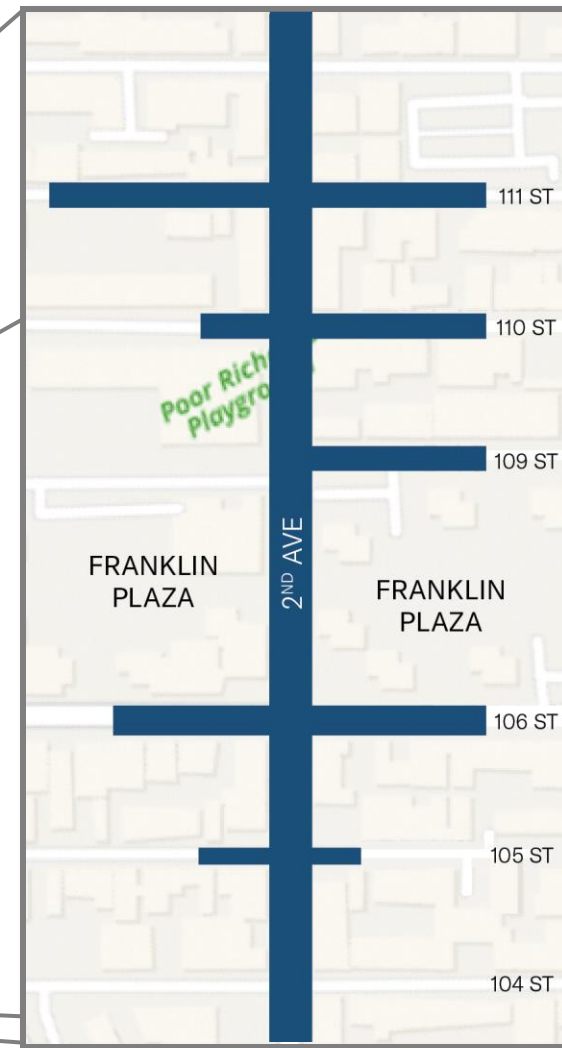
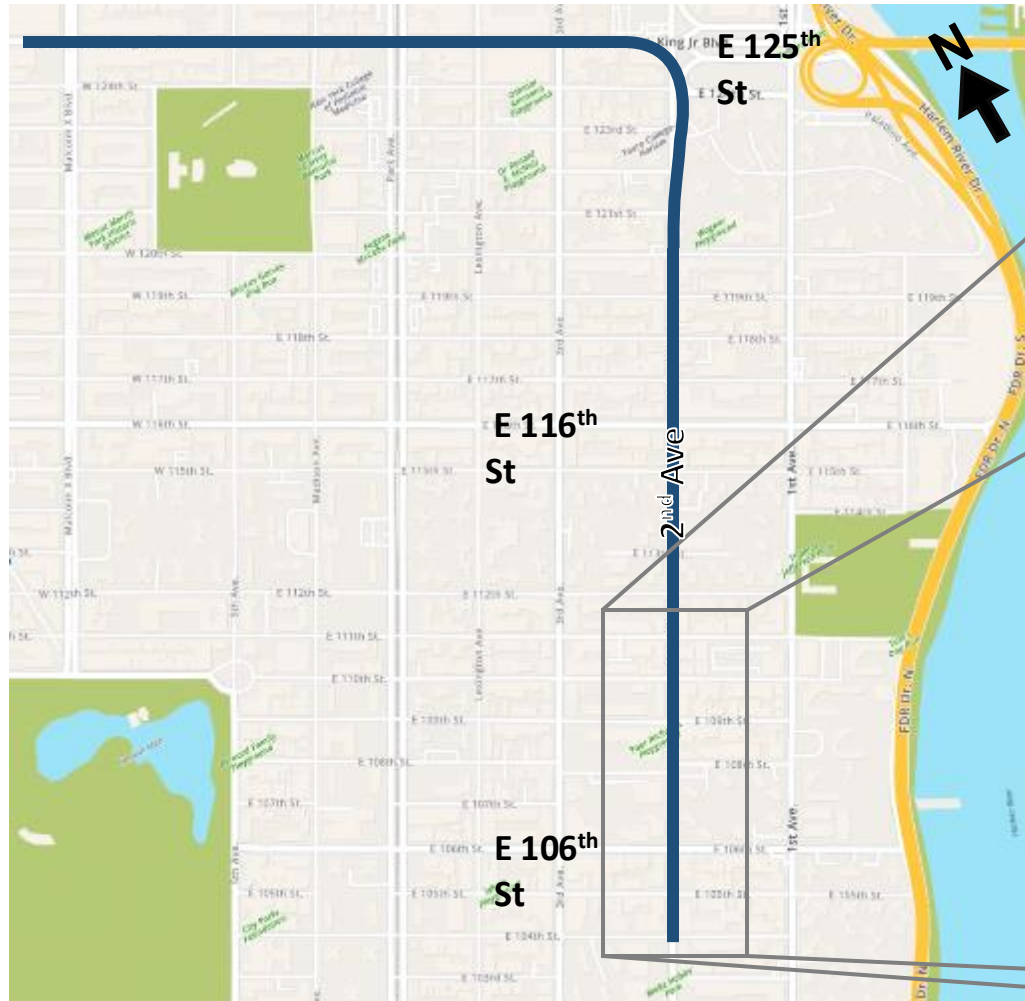


106th Street Station Entrance 1 (Accessible Entrances)



Current Project Limits / Contract 1

C-26201 Project Limits



Contract 1 Scope of Work

- Instrumentation- Seismic/Air/Noise
- Building Remediation / Underpinning
- Utility Relocation
- MPT
- Environmental / Hazardous Material Work



Lessons Learned: Advanced Utility Relocation

By getting utilities addressed first, we reduce risk.



106th Street Station Area

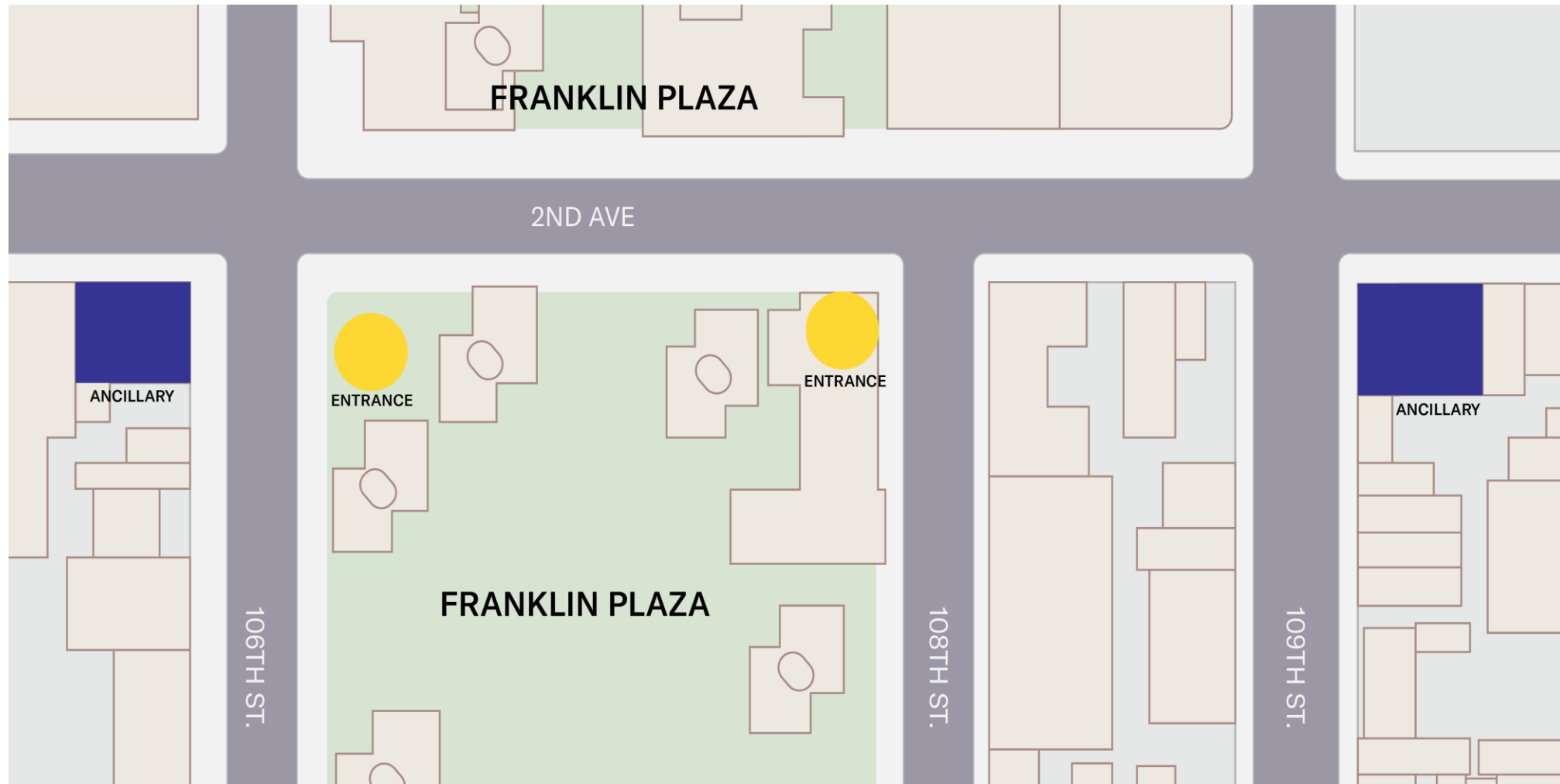
LEGEND



PROPOSED ENTRANCES



PROPOSED ANCILLARIES



Concerns from Q1 Advisory Committee Meeting

- Expressed concerns of water shutdowns
 - Timing of work is dictated by relevant agencies
- Street Closure on 110th Street
 - Street closure from construction project on 3rd Avenue was related to DEP, not Second Avenue Subway
- Garbage placement along MPT
 - MPT was removed
- MPT blocking storefronts 109th – 110th
 - Installing signage to identify businesses
- Concern about test pits in front of store entrances
 - Test pits are conducted on an as needed basis

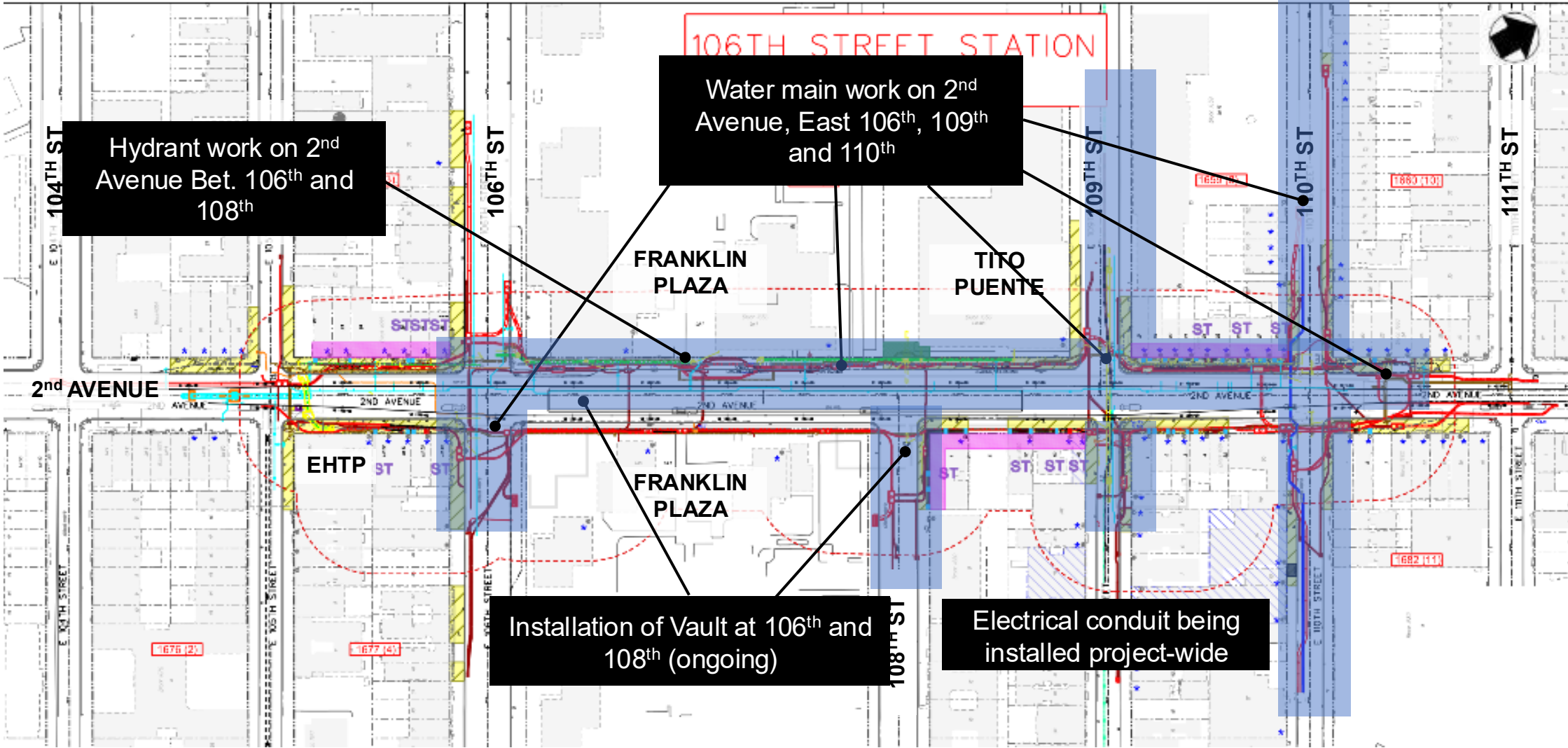


Construction Completed Since Last Meeting

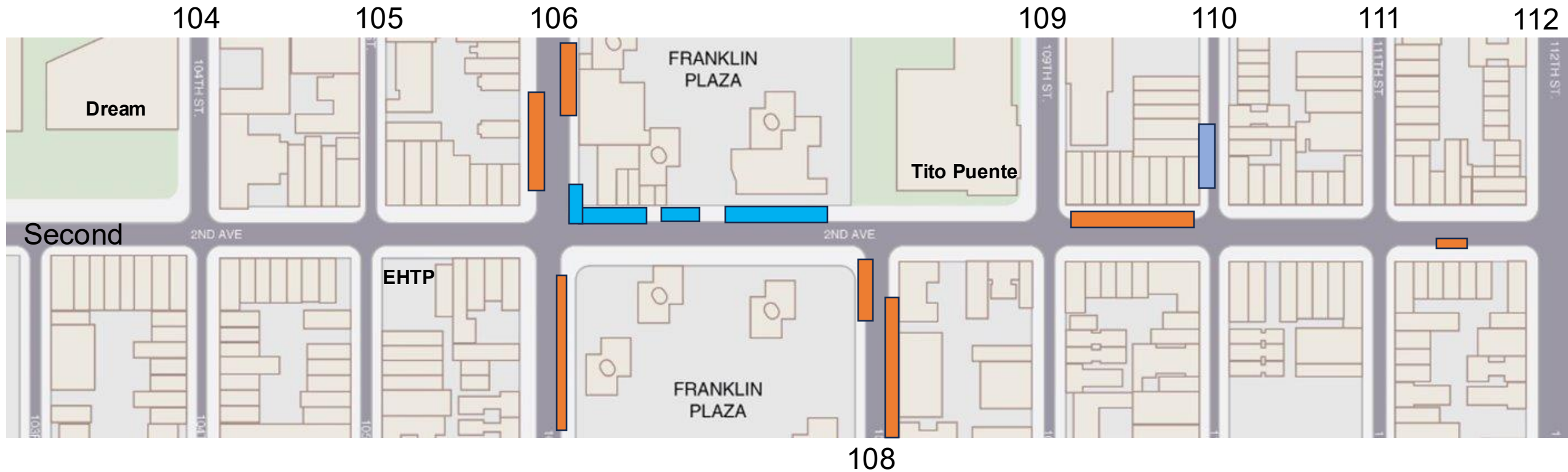


Construction & Development

Utility Relocation Work Completed



Current MPT – Contract 1



Rev- April 17, 2025



Hydrant Work on 2nd Avenue



Fire Hydrant installation bet. 106th and 107th



Alternate angle of installation

Sidewalk Cutback on 2nd Avenue

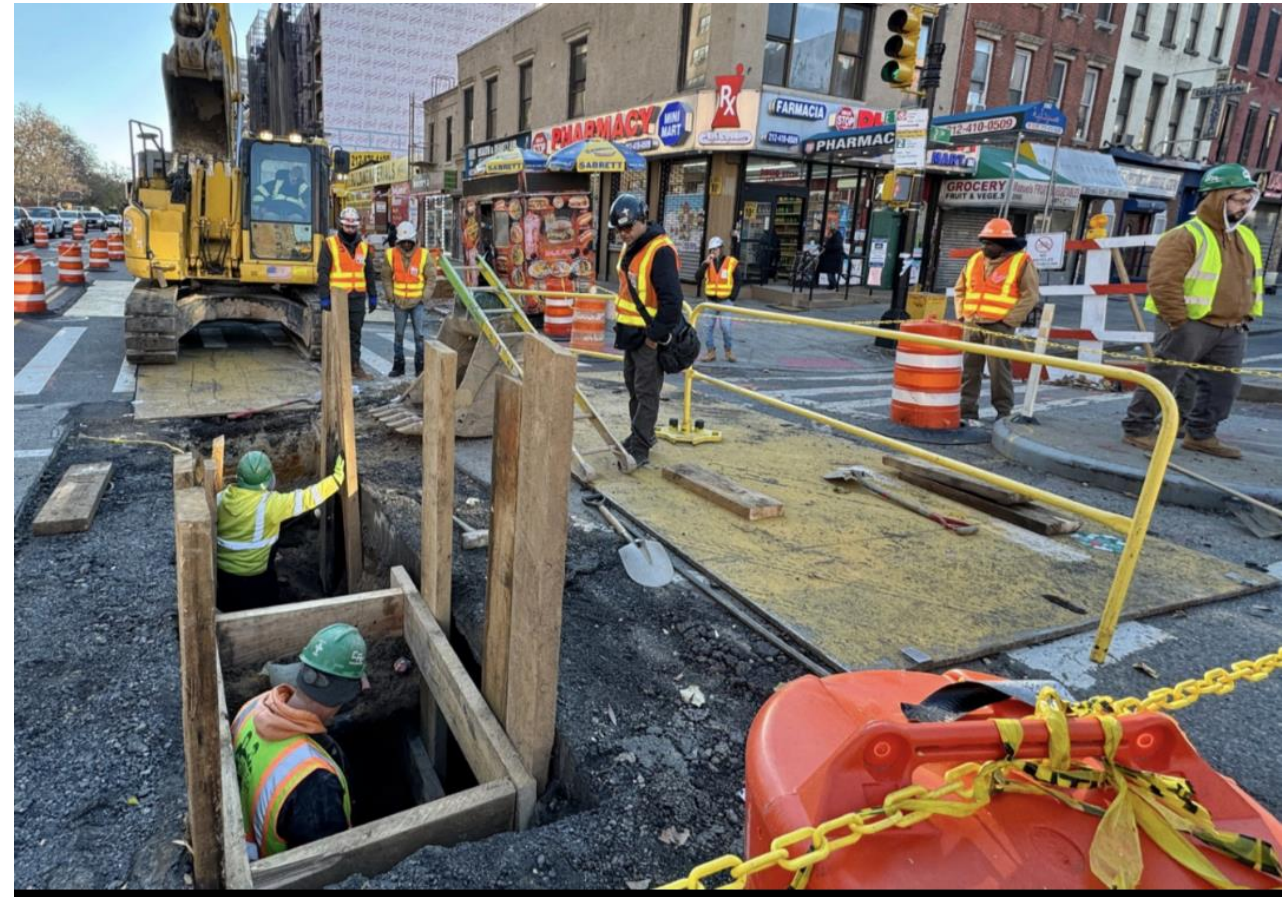


Sidewalk cutback between 110 and 111 Street

Watermain Work



Water Main Valve Installation Throughout



106th Street and 2nd Avenue



Electrical Work



106th Street and 2nd Avenue

Utility Vault Installation



108th and 2nd Ave

2nd Avenue West Sidewalk – MPT Installed

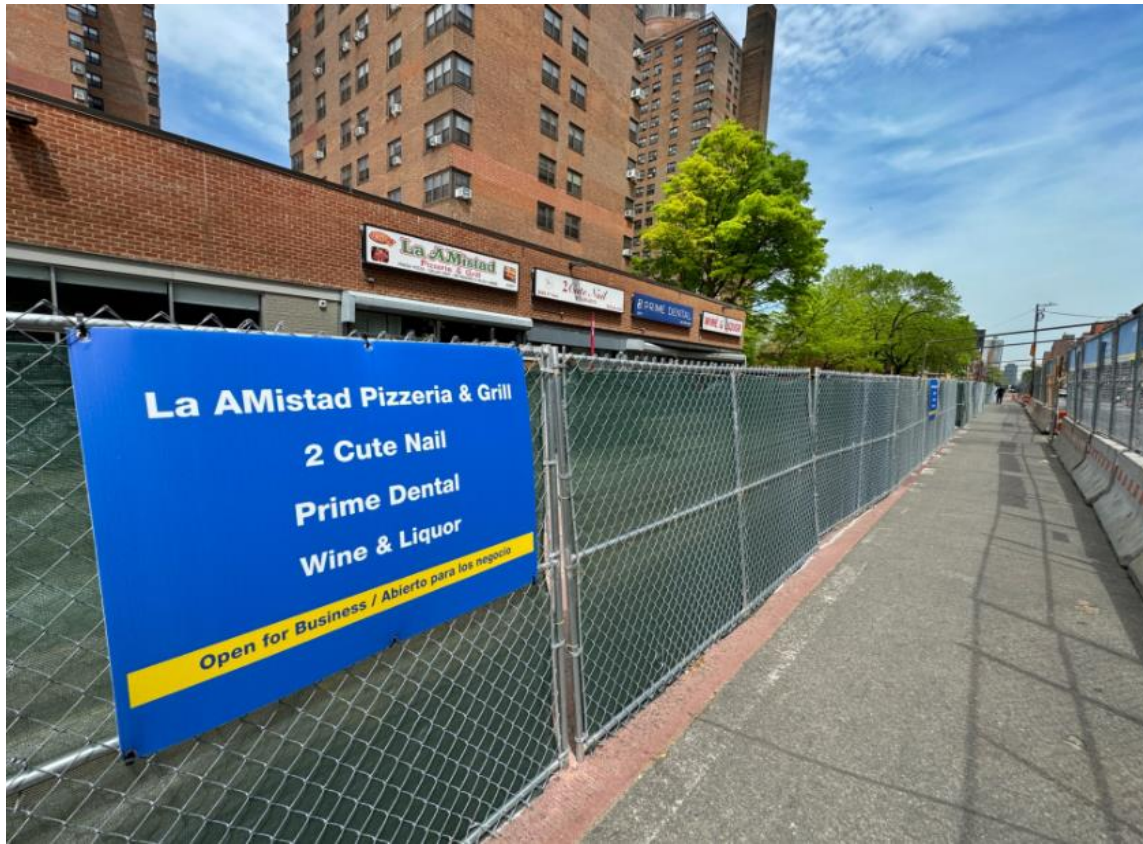


Corner MPT/Work Area 106th St. looking east



Corner MPT/Work Area 108th St. looking south

2nd Avenue West Sidewalk – MPT Installed



Wayfinding Signs Pedestrian Walkway



Storefront Access



Contract 1 Upcoming Work



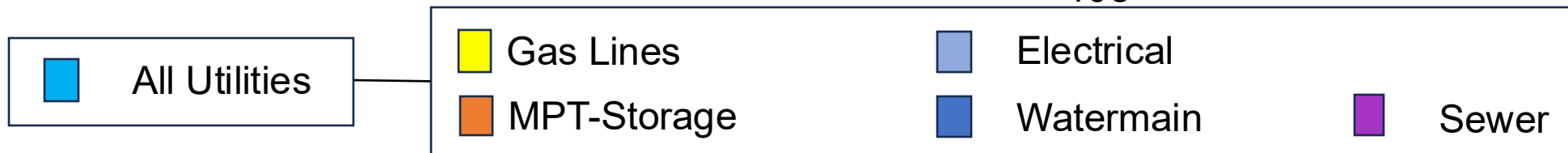
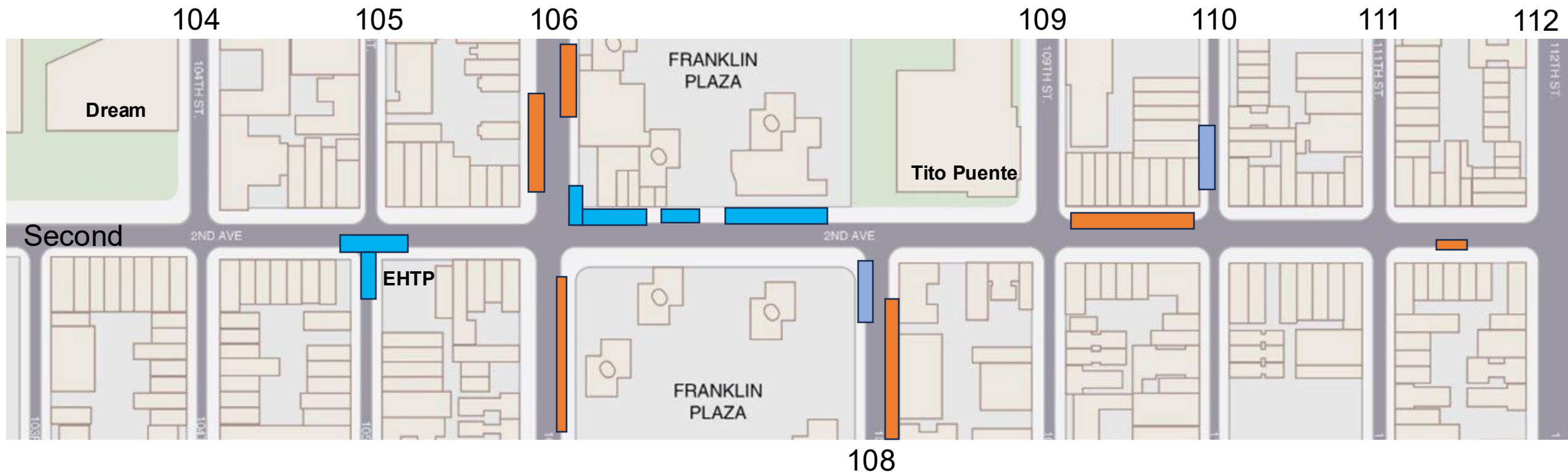
Construction & Development

Upcoming Work

- Cut back work on east side of 2nd Avenue moved later in 2025 or early 2026
- Sewer, gas, and electric, install on west side of 2nd Ave. from 106th to 109th Streets, MPT has been set up
- Sewer, gas, and electric, install on the east side of 105th Street moved up to Q3 2025 (Tentative)
- Side street utility relocation work to continue
- Building stabilization moved out to late 2025



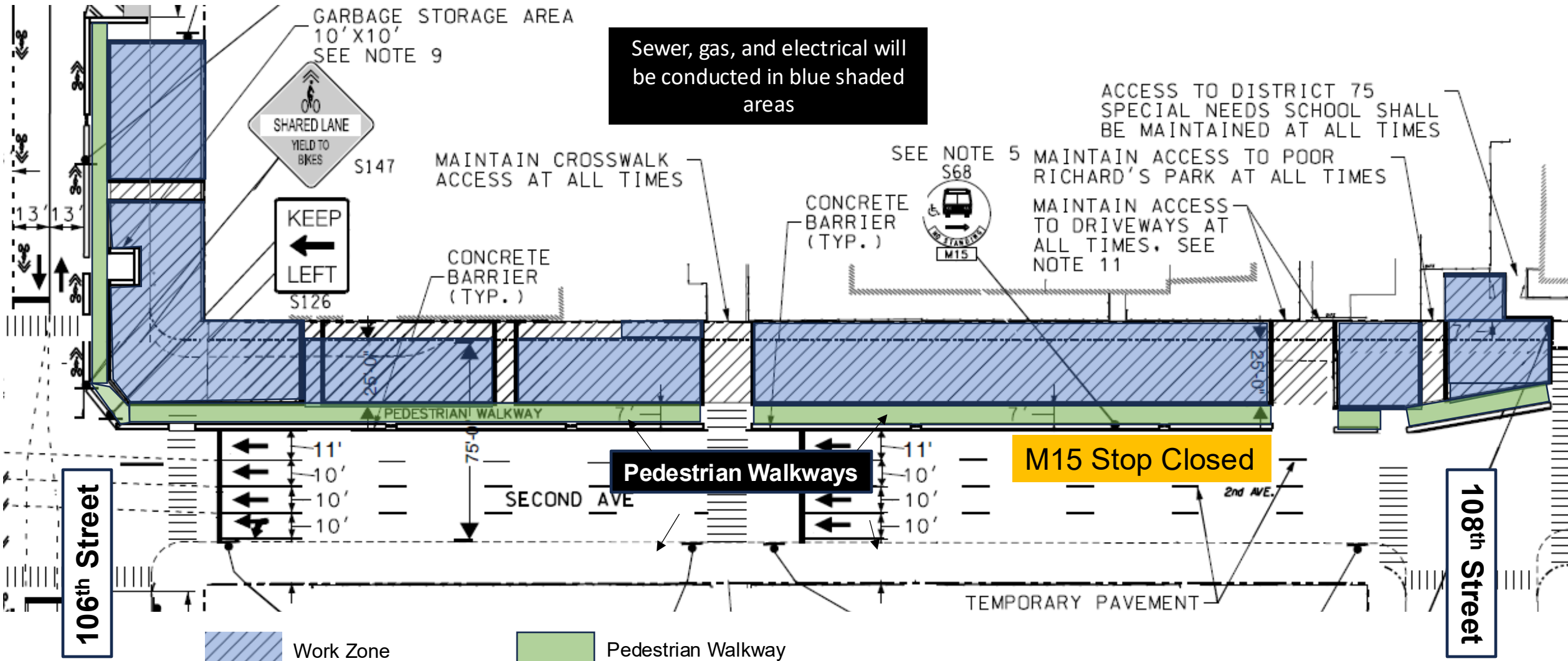
Upcoming MPT – Contract 1



Rev- April 17, 2025



Work Areas (Gas, Electric, and Water)



Test Pile – 106th and 2nd Avenue



108th Street - 1st & 2nd Work needs to be realigned



Example of Upcoming Electrical Work



Photo of newly installed electrical conduit along the alignment. This work will be replicated throughout the project area.

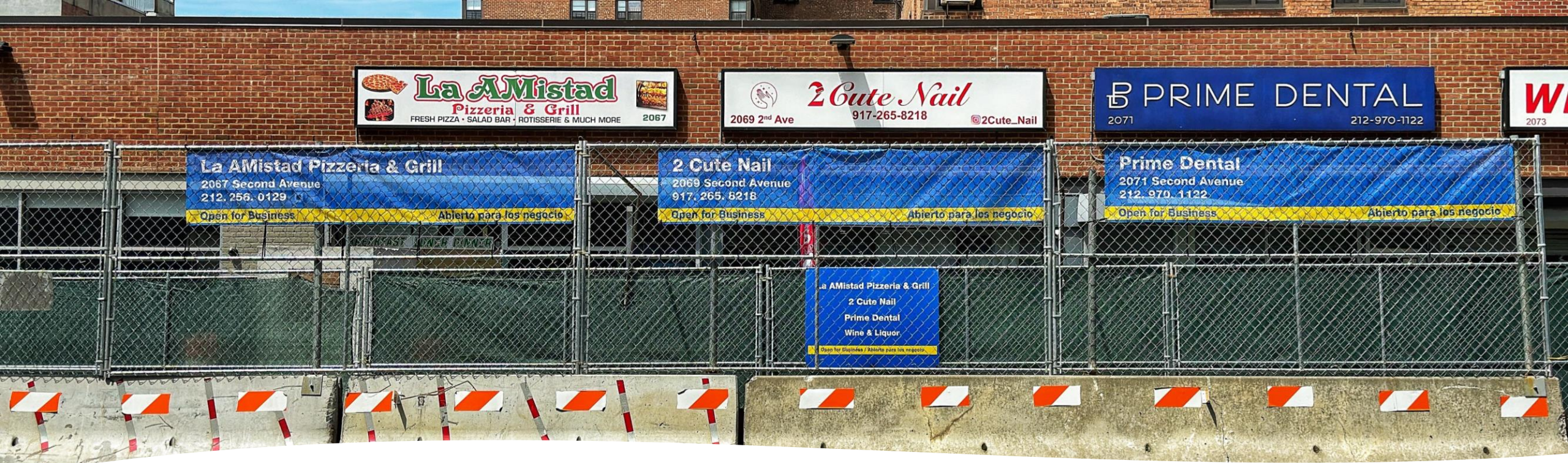


Monitoring Along Alignment - Ongoing



Air Quality Monitor





Good Neighbor Initiative

- Good Neighbor Initiative (GNI), where MTA will monitor and grade contractor performance to address quality of life issues.
- As work progresses there will be a comprehensive building, air quality, and noise monitoring plan to ensure this project can be delivered safely for the residents of East Harlem.
- Store banners being installed

Additional Benefits of the Good Neighbor Initiative

- GNI walks: Inspection of work zones along the project alignment
- Holding meetings with residents and merchants
- Working with community groups to resolve concerns
- Engaging schools along the alignment with our Student Ambassador Program
- Providing project updates to community leaders, elected officials and community organizations
- 24-hour emergency hotline



Incorporating Best Practices



Construction & Development

Informed approach to Phase 2

Phase 2 incorporates key lessons learned from Phase 1



Oversized spaces at 96 St Station



Utility relocation in Phase 1



Ten contracts – and even more contractors

SCOPE

**Phase 1
Lesson**

Build only what you need

PLANNING

Avoid surprises with utilities
and real estate

MANAGEMENT

Streamline contracts,
especially at key interfaces

**Phase 2
Approach**

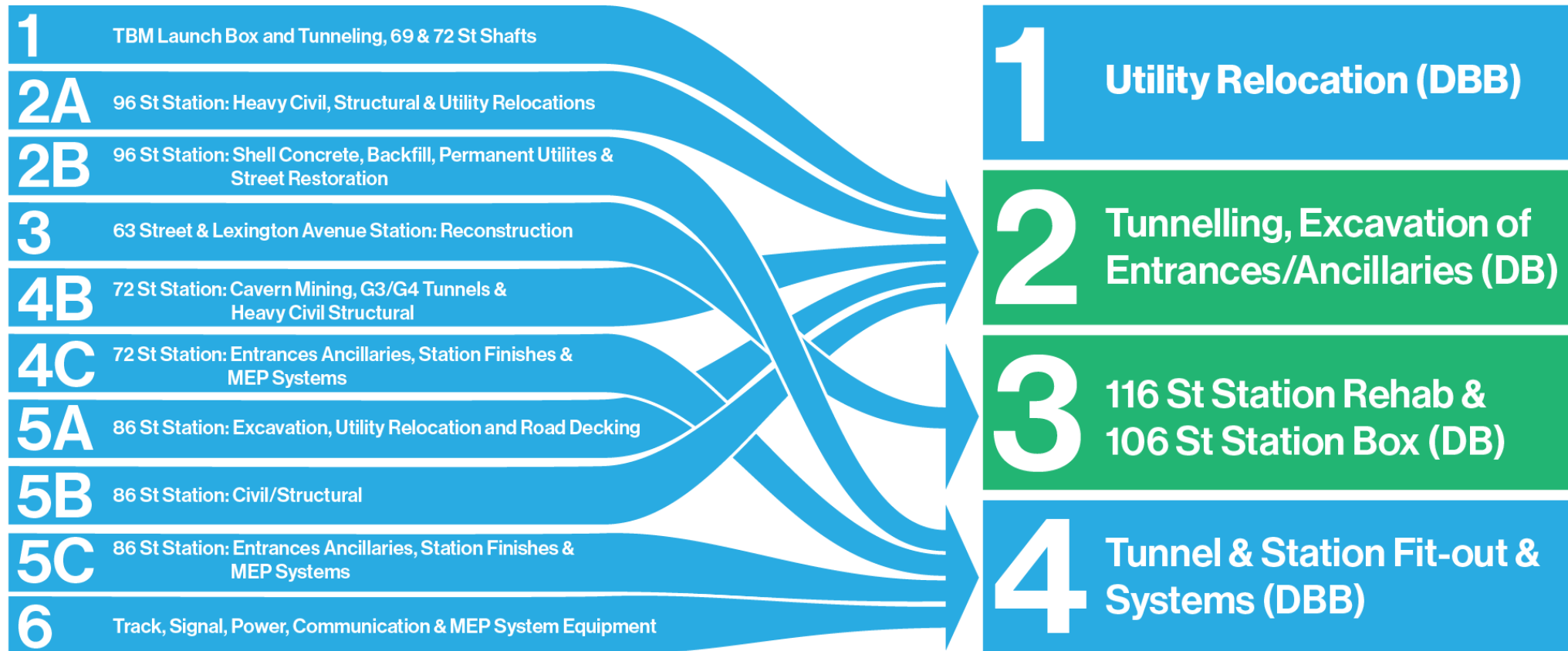
Reuse the old tunnels
Reduce station sizes
Reduce back-of house

Advanced utility relocation
Early real estate acquisition

Fewer contracts
Smart use of Design-Build
Outside expertise

Management: A Completely Different Approach

Fewer contracts with strategic use of design-build

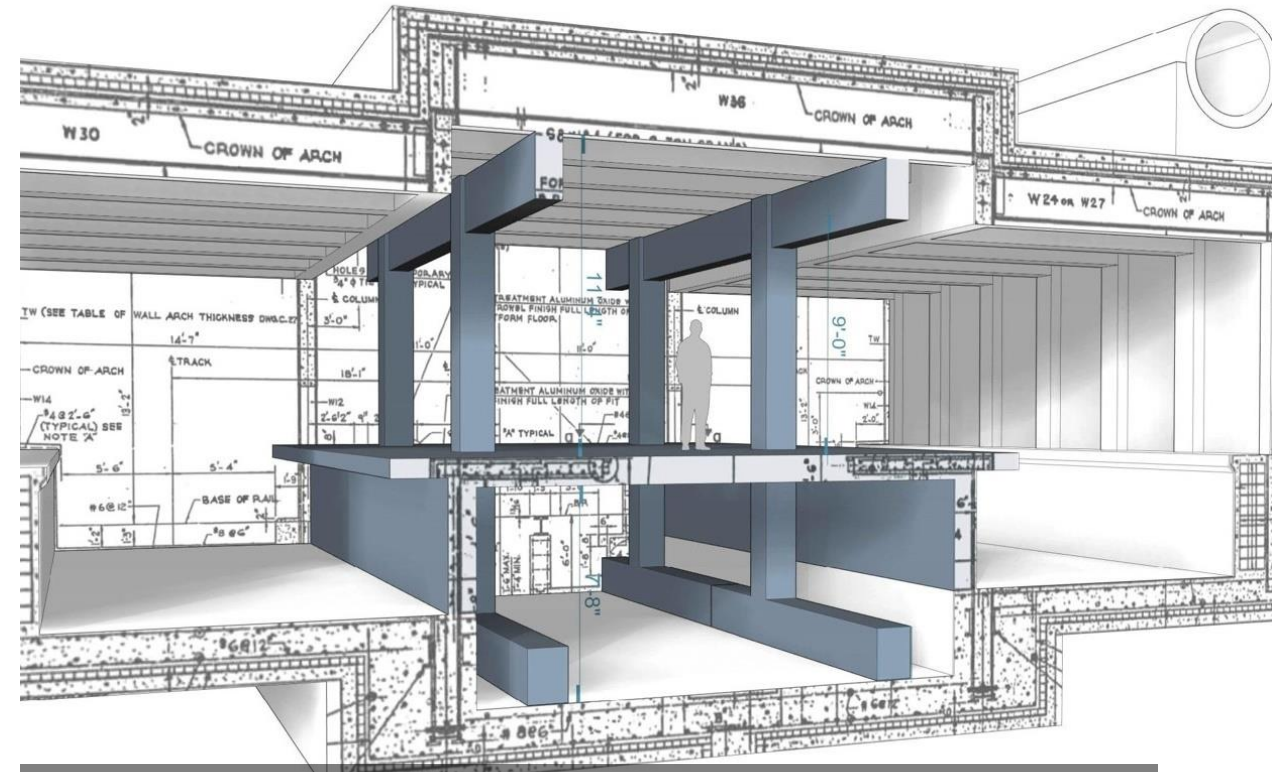


Scope: Reusing the old tunnels

Initial plans would have demolished the existing 1970s tunnels. Instead, we're putting them to good use.



1970s era tunnel – never intended to be a station – was slated for demolition



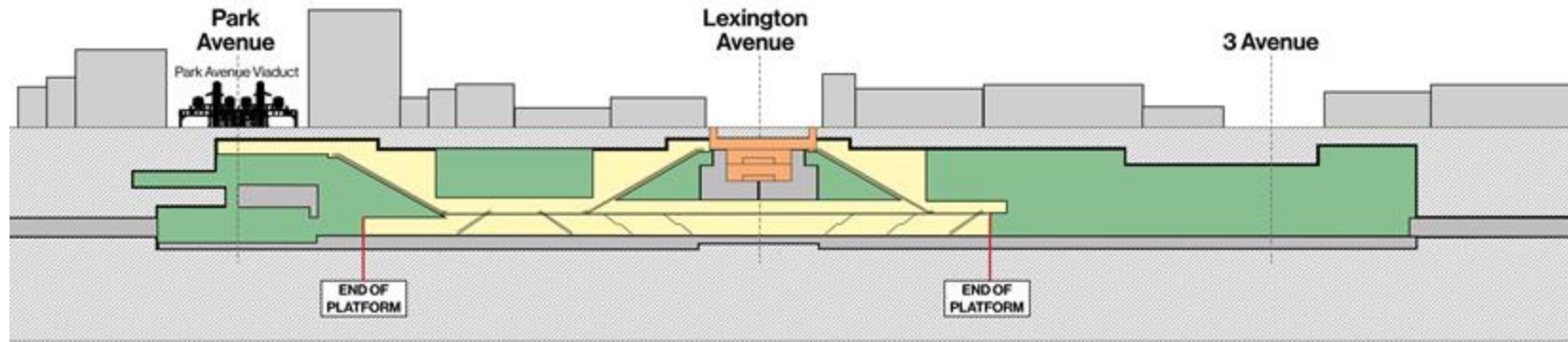
Instead, MTA is reusing and building out the structure, reducing costs by \$500M



Scope: Reducing Station Size

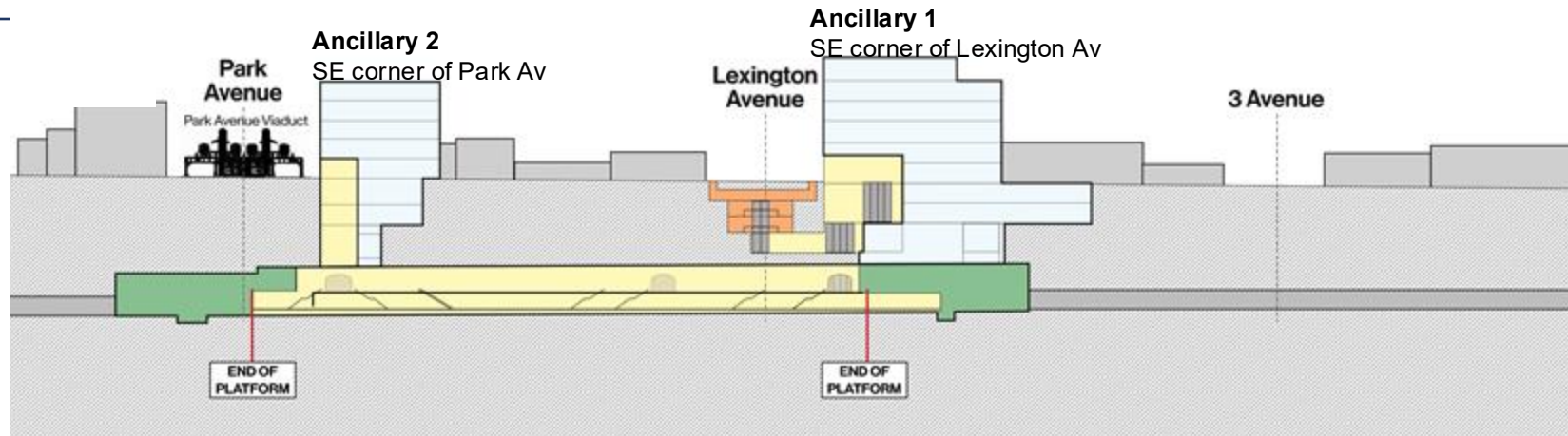
Station design has been reduced from original design while serving 100,000+ riders and meeting safety codes.

125 St Station 2004 FEIS Illustrative drawing



- Back of House
- Platform & Mezzanine
- 125 St 456 Station

2023 Design



- Ancillary
- Back of House
- Platform & Mezzanine
- 125 St 456 Station

Scope: All told, these steps saved more than \$1 billion

We're not done—as design advances, we're continuing to value engineer.

Reuse tunnels

Reduce station size

Reduce/relocate back-of-house

**\$1 billion+
savings**

Value engineering underway:

Eliminate tunnel “bellmouth” opening

Reduce platform width for capacity

Relocate mezzanine at 116 St to avoid utilities

Further reduce user space at 125 St

Improve tunnel launch location

**\$300 million+
savings**

+ *Design-Build will yield more efficient delivery concepts*



Community Outreach

Keeping the Community Informed

A Grass Roots Approach

Held Over 460 Outreach Meetings To Date

Community Outreach Center on 125th Street



Construction and Development



Community Engagement

- Merchants
- Public Meetings
- Schools and PTAs
- Senior Centers
- Street Fairs
- Pop Up Events
- Community Organizations
- Elected Officials
- Community Leaders
- Property Owners
- Tenant Associations
- Coop and Condo Boards



Community Outreach Contacts

Joseph O'Donnell

Director, Public Affairs
MTA Construction & Development
Joseph.O'Donnell@mtacd.org

Hector Santana

Project Manager, Community Outreach
Second Avenue Subway Community Outreach
Hector.Santana@mtacd.org

Second Avenue Subway Community Outreach

Alex Zamudio

Gregory Nyman

Fred Cannizzaro

Second Avenue Subway
Phase 2 Community Information Center
69 East 125th Street
212-722-3700
outreach@mtacd.org

Hours of Operation

Monday - Friday
9AM- 5PM

24-hour Hotline

212-693-9520



Questions?

Sign up for our E-Newsletter



Construction & Development