



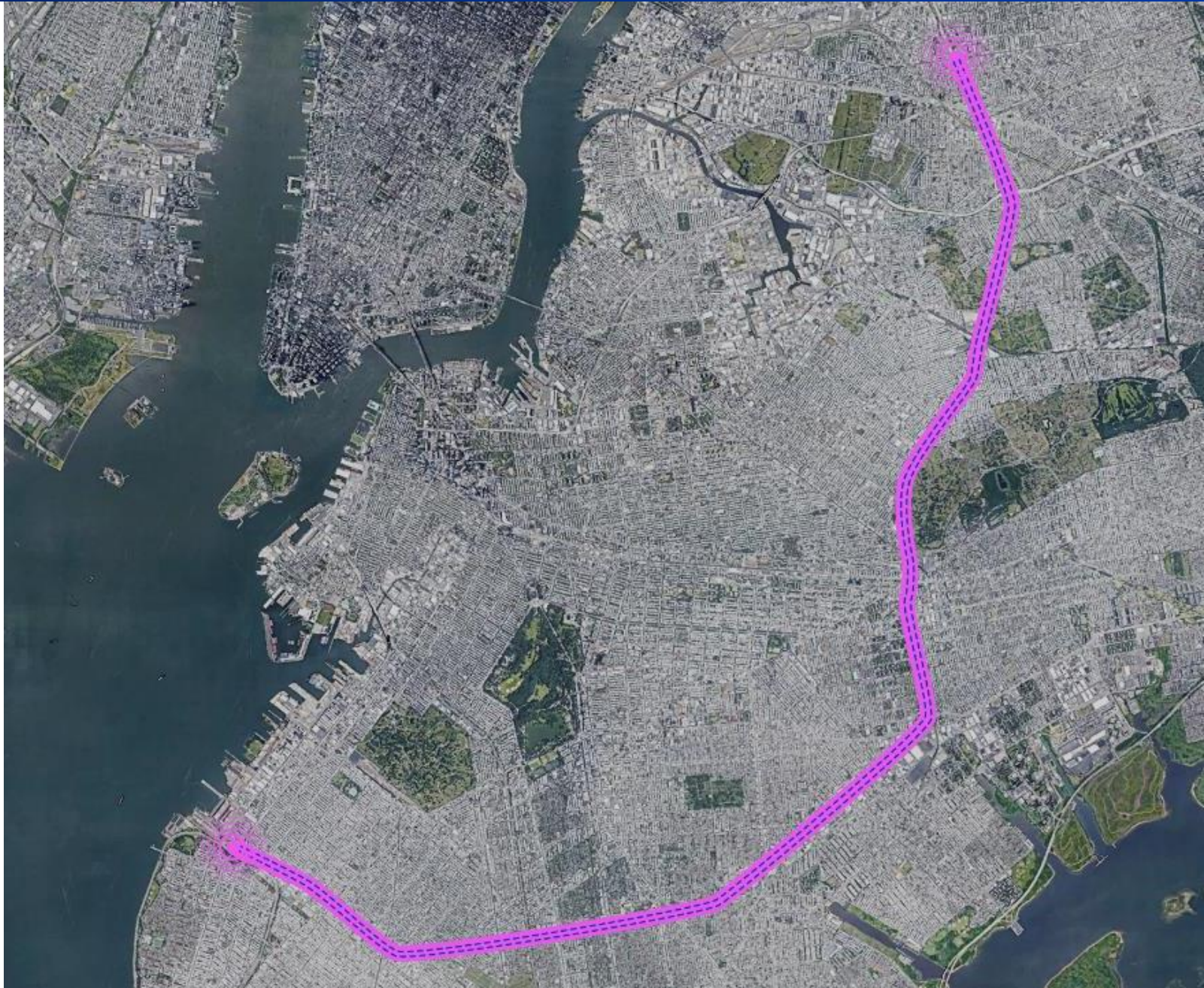
April 7, 2026

Interborough Express

Community Board Briefing –
Brooklyn Community Board 7



Construction &
Development



Agenda

- 01** Introductions
- 02** Project Overview
- 03** Access to Opportunity
- 04** Project Updates
 - Environmental Review
 - Design
- 05** Community Focus Areas
- 06** Next Steps

Project Overview



Project Context

The Interborough Express (**IBX**) would provide a **transformative new transit connection between Brooklyn & Queens**

- It would be built along an existing rail corridor that runs from Sunset Park to Jackson Heights and is currently used solely for freight
- The IBX would **add passenger service** while preserving freight service
- The Southern portion (~11 miles) is owned by LIRR and operated by New York & Atlantic Railway
- The Northern portion in Queens (~3 miles) is owned by CSX



IBX Station Locations

The current station program was developed to **maximize connections** within MTA networks and major arterial roadways

18

IBX stations

13

IBX stations with subway transfers

17

Subway lines connecting with IBX

A C E N Q R 2 3 5 7 B D F M J Z L

50+

Current bus route connections

LIRR

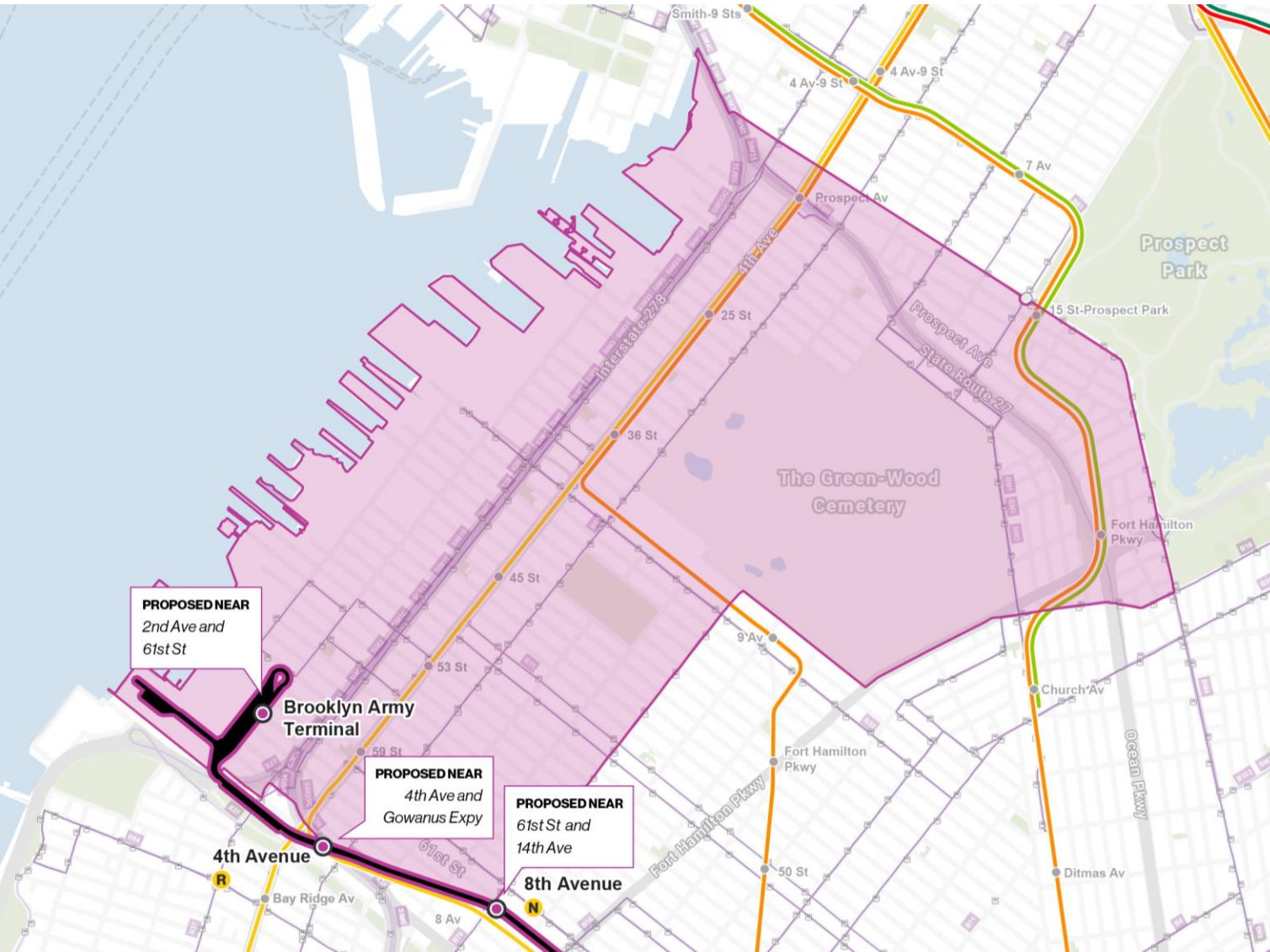
Connections at East New York & Woodside Avenues



Access to Opportunity



Brooklyn Community District 7



Brooklyn Community District 7 is currently served by:

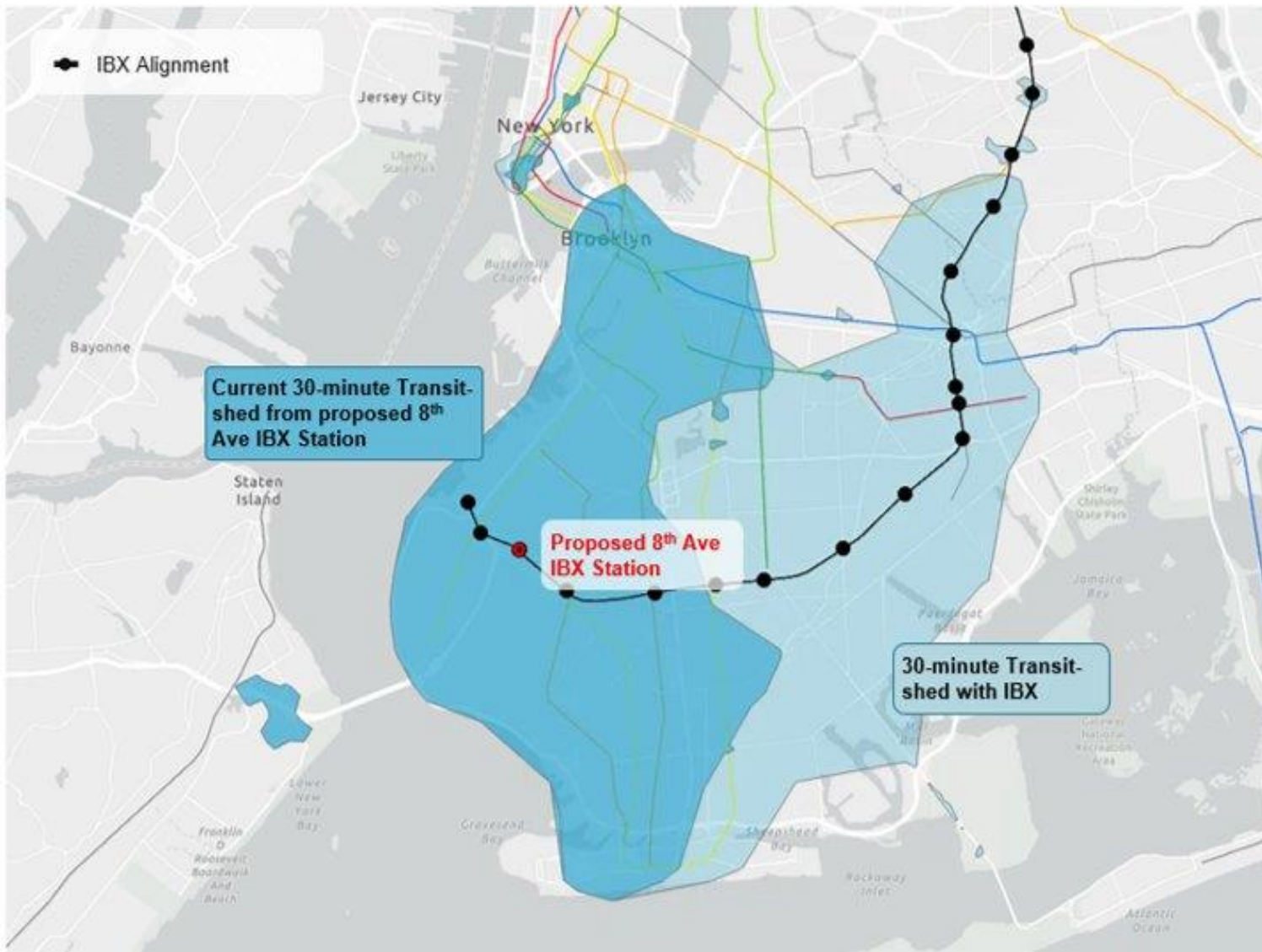
- **23** bus routes (B9, B11, B16, B35, B37, B61, B63, B67, B68, B69, B70, SIM2, SIM4, SIM4C, SIM5, SIM15, SIM31, SIM34, SIM35, X27, X28, X37, X38)
- Subway lines (**N** **R** **D** **F** **G**)

IBX will introduce **three stops** at:

- Brooklyn Army Terminal
- 4th Avenue
- 8th Avenue

Exact station locations subject to change

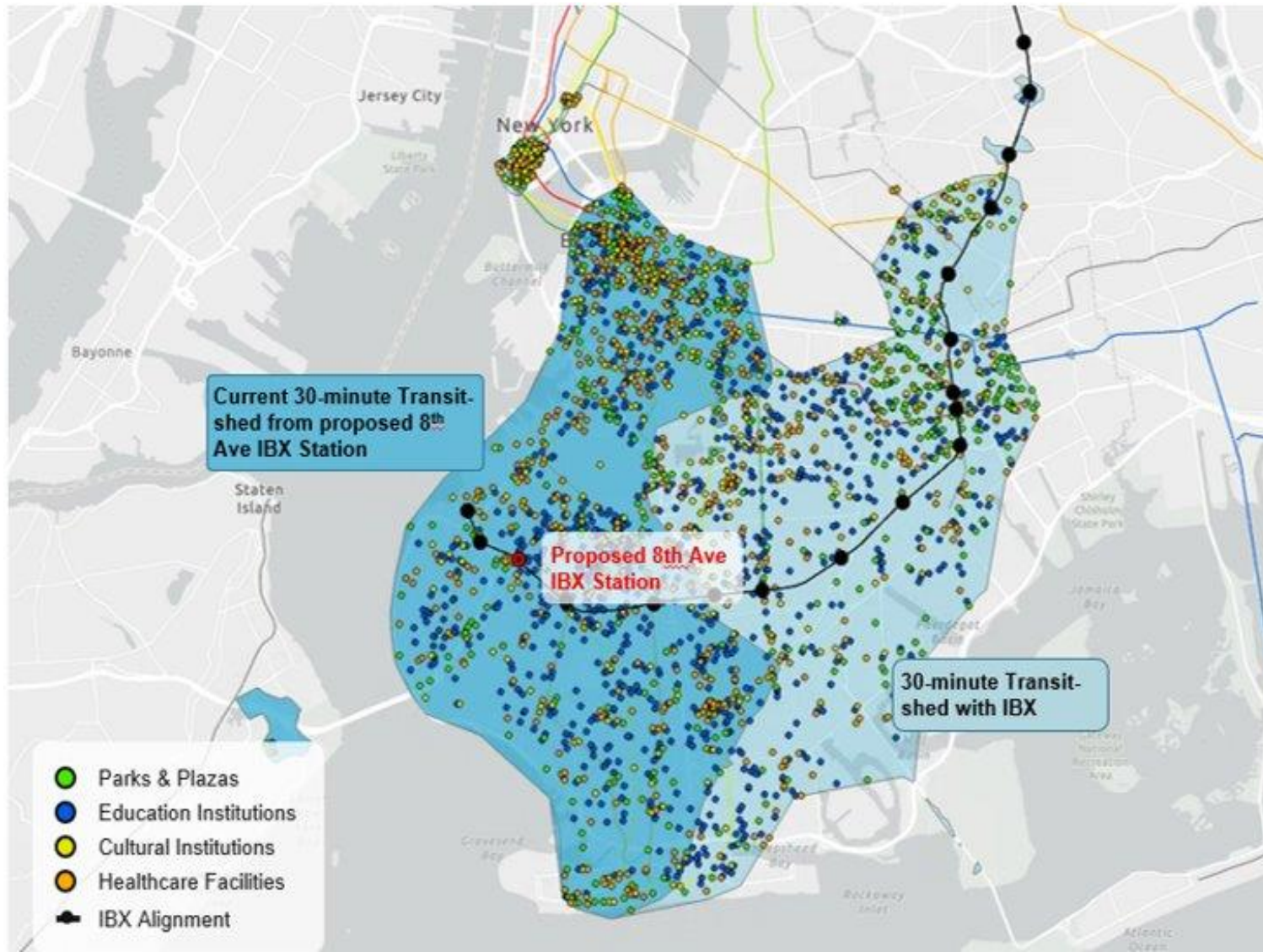
Access to Opportunity: 8th Avenue



IBX **nearly doubles** the land area accessible within a 30-minute public transit trip

- **Residents** gain access to employment hubs, amenities, and recreation
- **Businesses** reach larger customer bases and talent pools
- Newly accessible **destinations** include:
 - Battery Park City
 - Financial District

Access to Opportunity: 8th Avenue



Residents and businesses near **8th Avenue** will gain access to:

1.6x jobs

From 436K to 692K

1.6x healthcare facilities

From 458 to 744

1.3x higher education institutions

From 18 to 23

1.6x daycare & pre-K

From 765 to 1,255

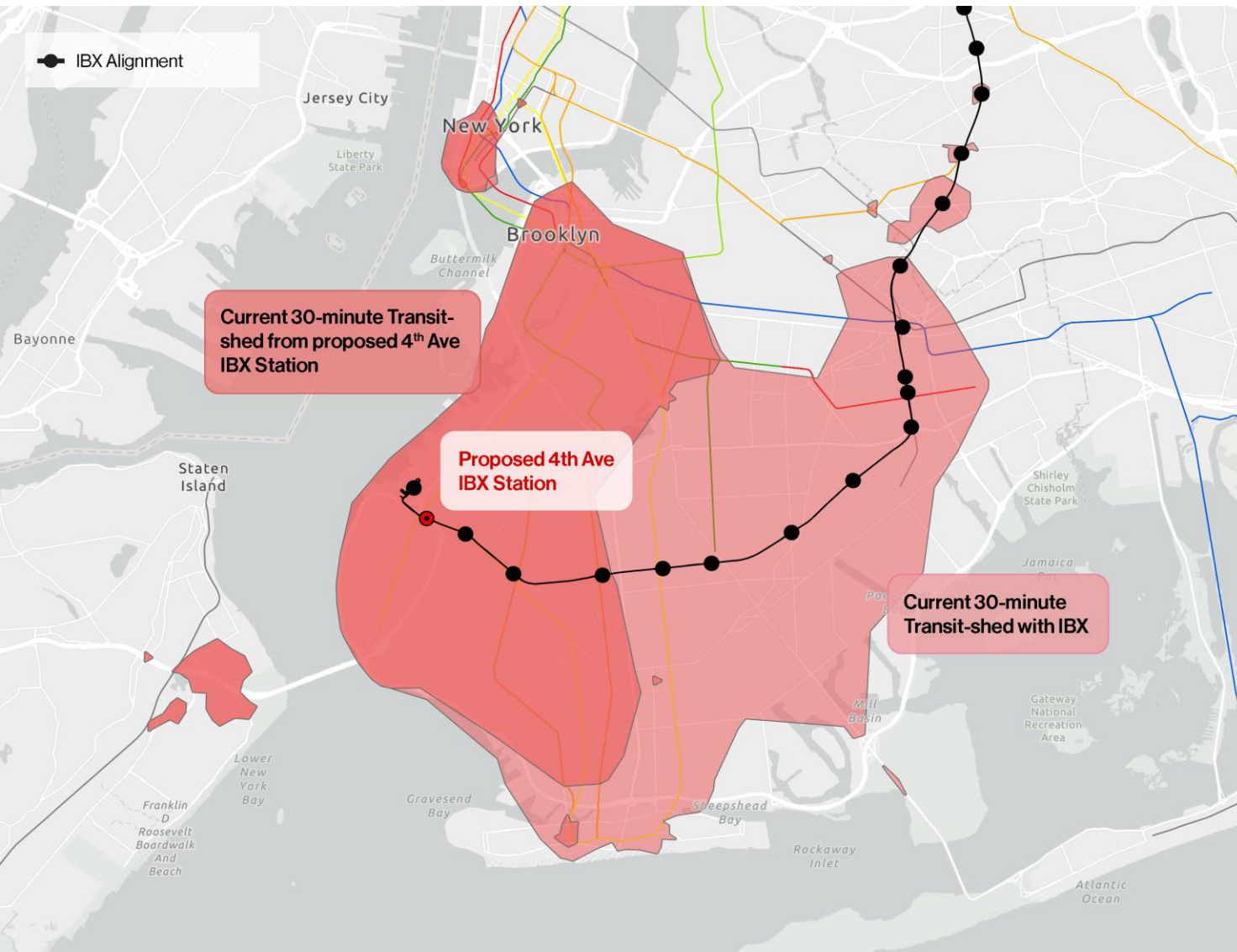
1.4x cultural institutions

From 295 to 407

1.9x working age population

From 812K to 1.5M

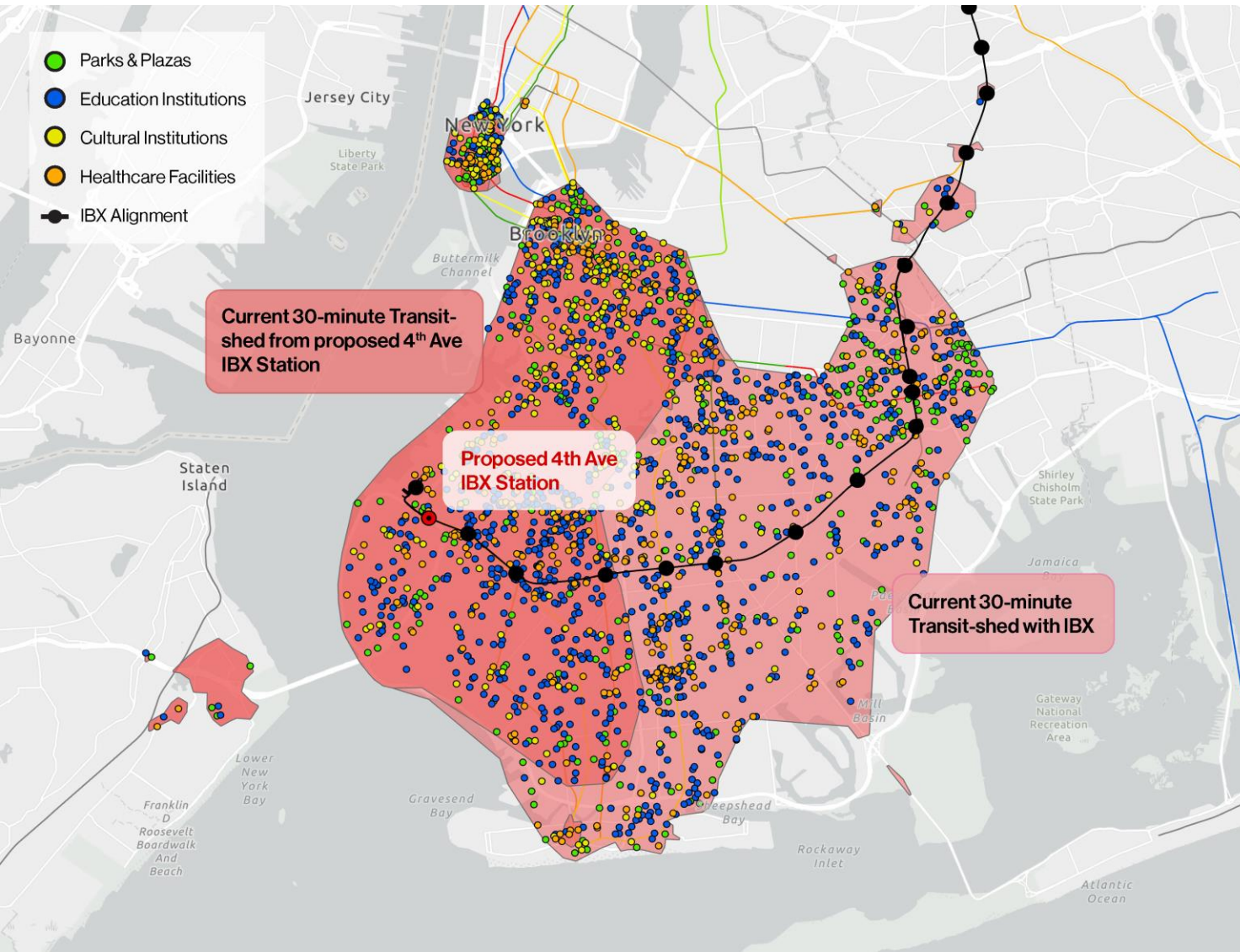
Access to Opportunity: 4th Avenue



IBX **doubles** the land area accessible within a 30-minute public transit trip

- **Residents** gain access to employment hubs, amenities, and recreation
- **Businesses** reach larger customer bases and talent pools
- Newly accessible **destinations** include:
 - Coney Island
 - Crown Heights
 - East New York
 - Flatbush
 - Ridgewood

Access to Opportunity: 4th Avenue



Residents and businesses near **4th Avenue** will gain access to:

1.6x jobs

From 454K to 706K

1.9x healthcare facilities

From 372 to 715

1.1x higher education institutions

From 21 to 24

1.7x daycare & pre-K

From 696 to 1,206

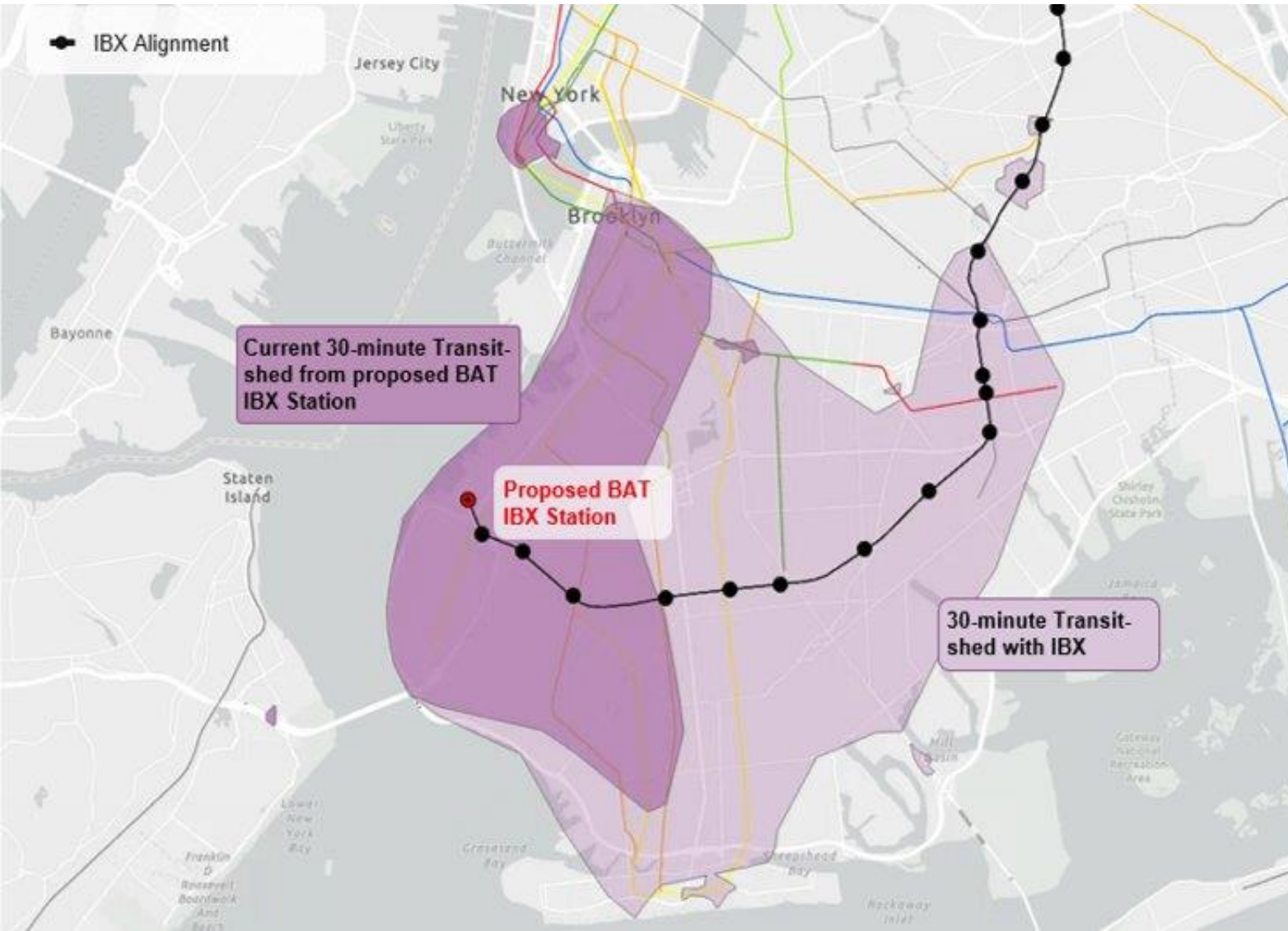
1.3x cultural institutions

From 315 to 405

2.1x working age population

From 681K to 1.4M

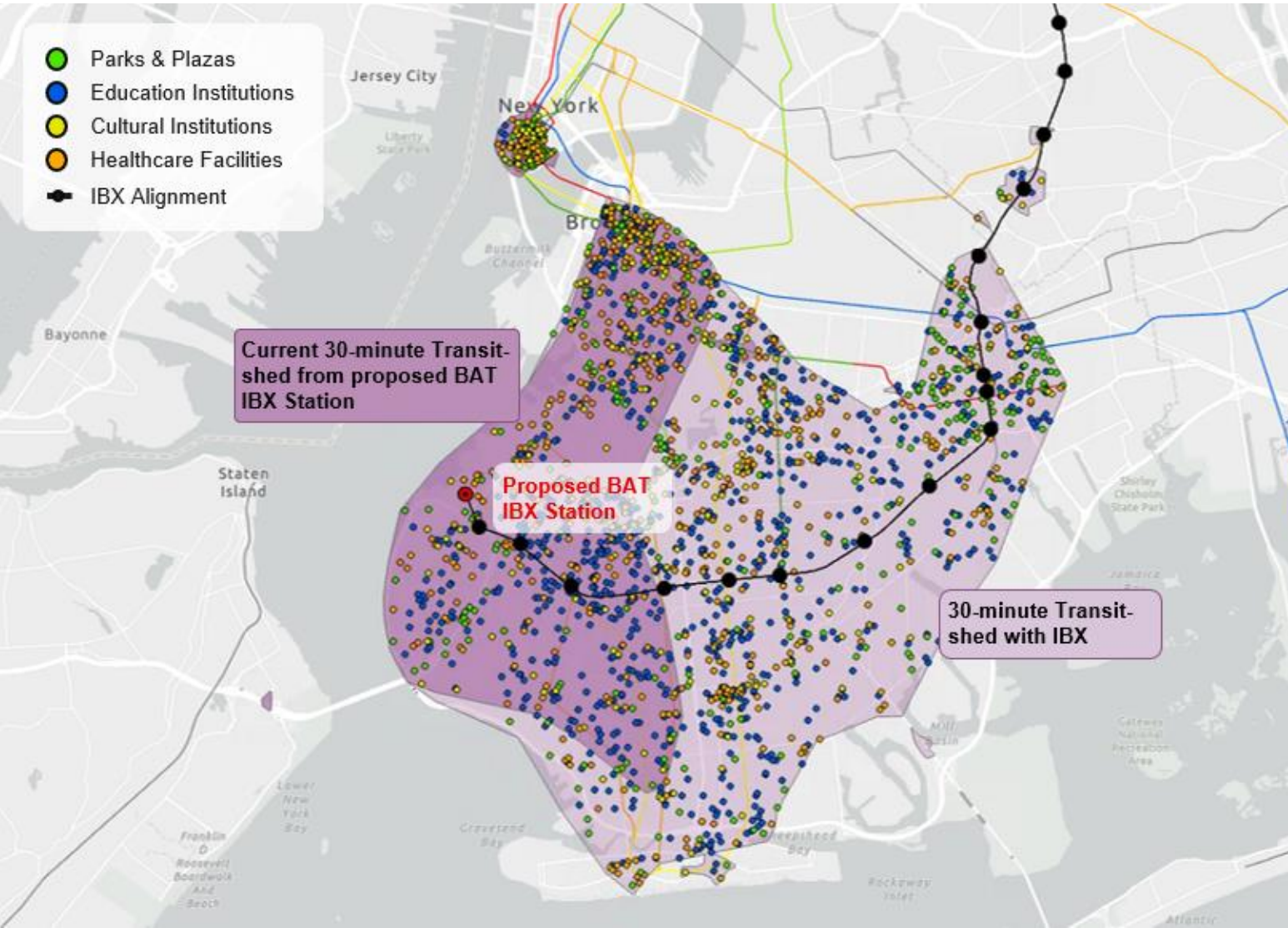
Access to Opportunity: Brooklyn Army Terminal



IBX **more than doubles** the land area accessible within a 30-minute public transit trip

- **Residents** gain access to employment hubs, amenities, and recreation
- **Businesses** reach larger customer bases and talent pools
- Newly accessible **destinations** include:
 - Coney Island
 - Crown Heights
 - East New York
 - Ridgewood

Access to Opportunity: Brooklyn Army Terminal



Residents and businesses near **Brooklyn Army Terminal** will gain access to:

1.9x jobs

From 336K to 632K

2.3x healthcare facilities

From 288 to 659

1.6x higher education institutions

From 11 to 18

2.1x daycare & pre-K

From 513 to 1,074

1.6x cultural institutions

From 219 to 345

2.6x working age population

From 491K to 1.3M

Project Updates



Environmental Review



SEQRA Environmental Review

In October 2025, MTA kicked off the environmental review process under the New York State Environmental Quality Review Act (SEQRA)

- MTA completed the Scoping phase in November, hosting two in-person and two virtual Scoping meetings. Over 500 comments were provided.
- Environmental analyses are now underway
- A final Scoping Document will be issued this year, with a Draft Environmental Impact Statement (DEIS) to follow



Property Acquisition

IBX's location **within an existing rail corridor significantly reduces** the need for private property acquisition

- However, a small number of properties will need to be acquired
- MTA is also aware of encroachments into the right of way
- MTA is working to identify these properties and minimize acquisitions to the extent possible
- Acquisition may only begin after the EIS is complete (est. Q4 2026). If acquisition is required, MTA will fully comply with the Uniform Relocation Act and all applicable laws governing the use of eminent domain.



Project Design



Design Process

- MTA has retained an engineering team to **begin design** of the IBX project
- Design is a **two-year process** that includes three workstreams:

Due Diligence	Civil Design	System Design
<ul style="list-style-type: none">• Surveys• Geotech• Environmental• Structure inspections	<ul style="list-style-type: none">• Site work• Utilities• Structures• Track work	<ul style="list-style-type: none">• Stations• Operations facility• Storage yard• Power, train control, communications

- MTA's design team will also assist with procurement of construction contracts

Due Diligence: Pre-Design In Brooklyn

- Pre-design is when **sites are analyzed in detail**
- This work tells MTA about project feasibility – and **changes to earlier assumptions**
- The design team has distributed flyers and contacted properties close to work sites to ensure coordination and minimal disruption

Field Work Underway	Completion
Geotechnical Investigation Evaluates soil, rock, groundwater conditions	40%
Surveying Models conditions in 3D	45%
Structures Inspections Assesses integrity of nearby infrastructure, like bridges	55%



Soil Boring Operations within New York & Atlantic's Right of Way

Systems Design: Stations & Urban Realm

Since Fall 2025, MTA's design team has conducted site investigations, developed station prototypes, and analyzed critical factors such as fire and life safety

- **Design is prioritizing** the passenger experience, neighborhood interfaces, accessibility, and connection with other modes of transportation
- This Spring, MTA will host a series of **public workshops** to ask for input on these and related topics:
 - Safety
 - Wayfinding
 - Street lighting
 - Passenger information products
 - Treatments for fencing/barriers



Prototype of Station Entrance (Illustrative Only)

Community Focus Areas



Stormwater Management

As part of design, MTA and their design team are developing a **resilience plan to mitigate stormwater flooding** throughout the corridor

- MTA continues to **meet with NYCDEP** to coordinate stormwater modeling, existing system connection, and future mitigation plans
- Resilience plan design is prioritizing public safety, operational resilience, and impacts to adjacent neighborhoods, particularly during storm events



Track Ponding at Entrance to 65th Street Yard

Electrical Grid Capacity



MTA and their design team are **working with ConEd** to ensure IBX's electrical needs can be met by the existing grid – and that any grid improvements resulting from IBX also benefit communities

- IBX's electrical design is **prioritizing** public safety and resilience, overall impact, and vehicle performance under different conditions
- Upcoming public outreach will ask for feedback on substation architecture to blend with the existing community fabric

Next Steps



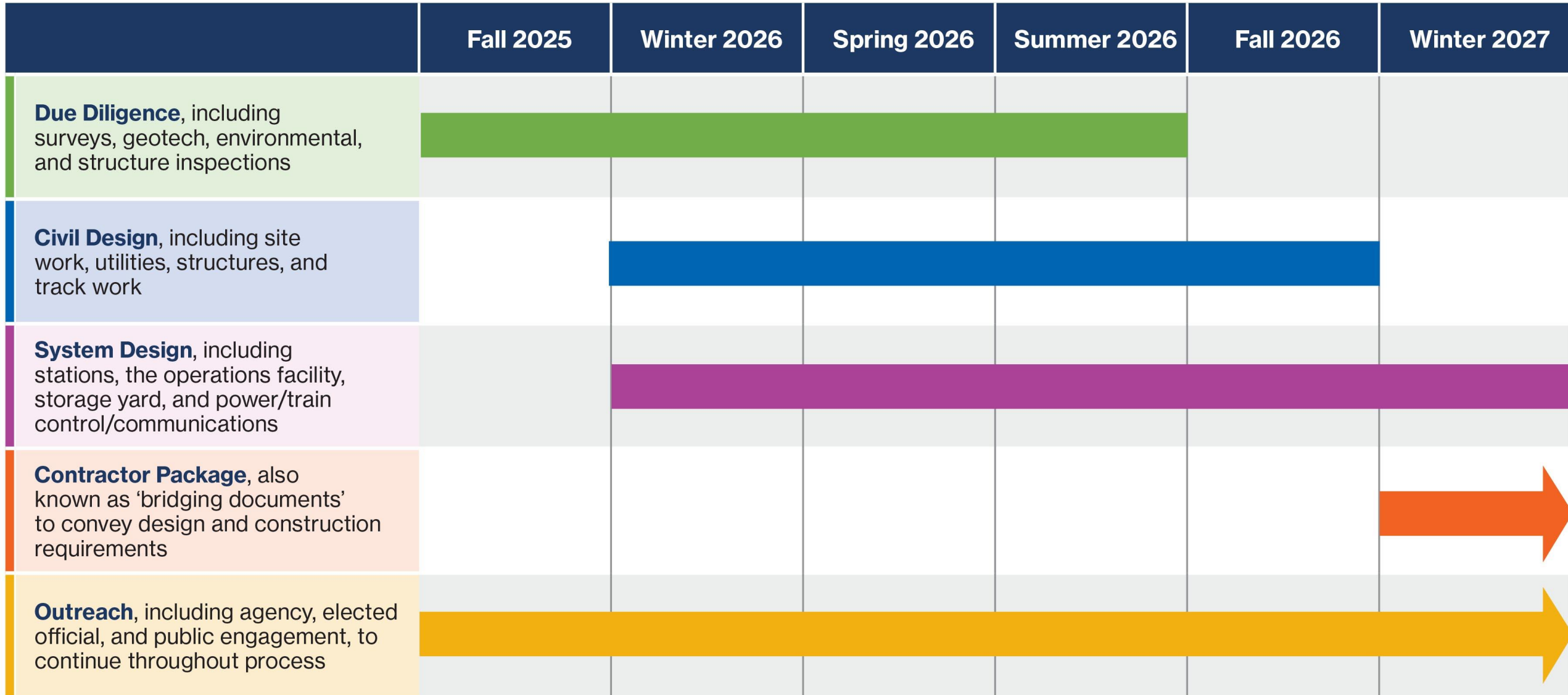
Upcoming Public Outreach



- MTA expects to ask for your feedback at three key stages over the next year:
 - To inform **design decisions**, including about stations, urban realm connections, and vehicle layout
 - To receive formal comment on the **DEIS** as part of New York's SEQRA process
 - To inform the **draft design** concepts developed during preliminary engineering
- MTA welcomes your input on locations, languages, and groups or individuals to include in this outreach
- To date, MTA has hosted: 12 open houses, 10 pop ups, four SEQRA scoping meetings, and quarterly Community Council meetings

Open House at the Queens Public Library in Ridgewood

Next Steps



Q&A



Thank you!





***Scan the QR code to
share your input!***

We want to hear from you!

Take the IBX survey to share your input on design priorities to help shape the Interborough Express.

Survey available in English and Spanish.