

PUBLIC NOTICE: Penn Station Access Project

Proposed Changes Affecting Starlight Park and Pelham Bay Park

Pursuant to 23 CFR 774.5(b), the Federal Railroad Administration (FRA), in coordination with the New York Metropolitan Transportation Authority (MTA), is providing notice and an opportunity for public review and comment on proposed changes to the Penn Station Access Project (Project) affecting Starlight Park and Pelham Bay Park in Bronx, New York.

The Project will provide new commuter rail service from the New Haven Line to Penn Station in Manhattan by utilizing Amtrak's Hell Gate Line. The Project will improve regional connectivity, reduce travel times, and provide new transit access to underserved communities in the eastern Bronx.

An Environmental Assessment (EA) and Finding of No Significant Impact (FONSI) were previously issued in 2021. During final design, The MTA identified the need for additional easements within Starlight Park and Pelham Bay Park to support construction and long-term maintenance of rail infrastructure.

The proposed changes include:

- Two additional easements (segments 16 and 17) along an existing roadway within Starlight Park for construction access and maintenance activities.
- One permanent non-exclusive access easement (segment 6) along an existing roadway to support access to the Co-Op City Station.



The FRA is evaluating these changes in accordance with Section 4(f) of the U.S. Department of Transportation Act. Based on preliminary analysis, The FRA anticipates making a **de minimis impact determination**, meaning the Project would not adversely affect the activities, features, or attributes that qualify these parks for protection.

Measures to avoid, minimize, and mitigate impacts include:

- Designing improvements to be compatible with existing park features, including pedestrian and bicycle pathways
- Coordinating access with NYC Parks and restoring any disturbed areas
- Implementing safety protocols to protect park users
- Obtaining all required environmental and agency approvals

Public Comment Period:

The public is invited to review the proposed changes and provide comments on the potential effects to Starlight Park and Pelham Bay Park.

Comments will be accepted May 29 - June 28, 2026

Comments may be submitted by:

Email: PSAOutreach@mtacd.org

Mail: James Siesfeld, Environmental Compliance Manager, MTA Penn Station Access Project, 39 Vaughn Ave, New Rochelle, NY 10801.

Website: www.mta.info/project/penn-station-access

All comments received during the comment period will be considered by the FRA prior to making a final determination.

PUBLIC NOTICE: Penn Station Access Project

Proposed Changes Affecting Starlight Park and Pelham Bay Park

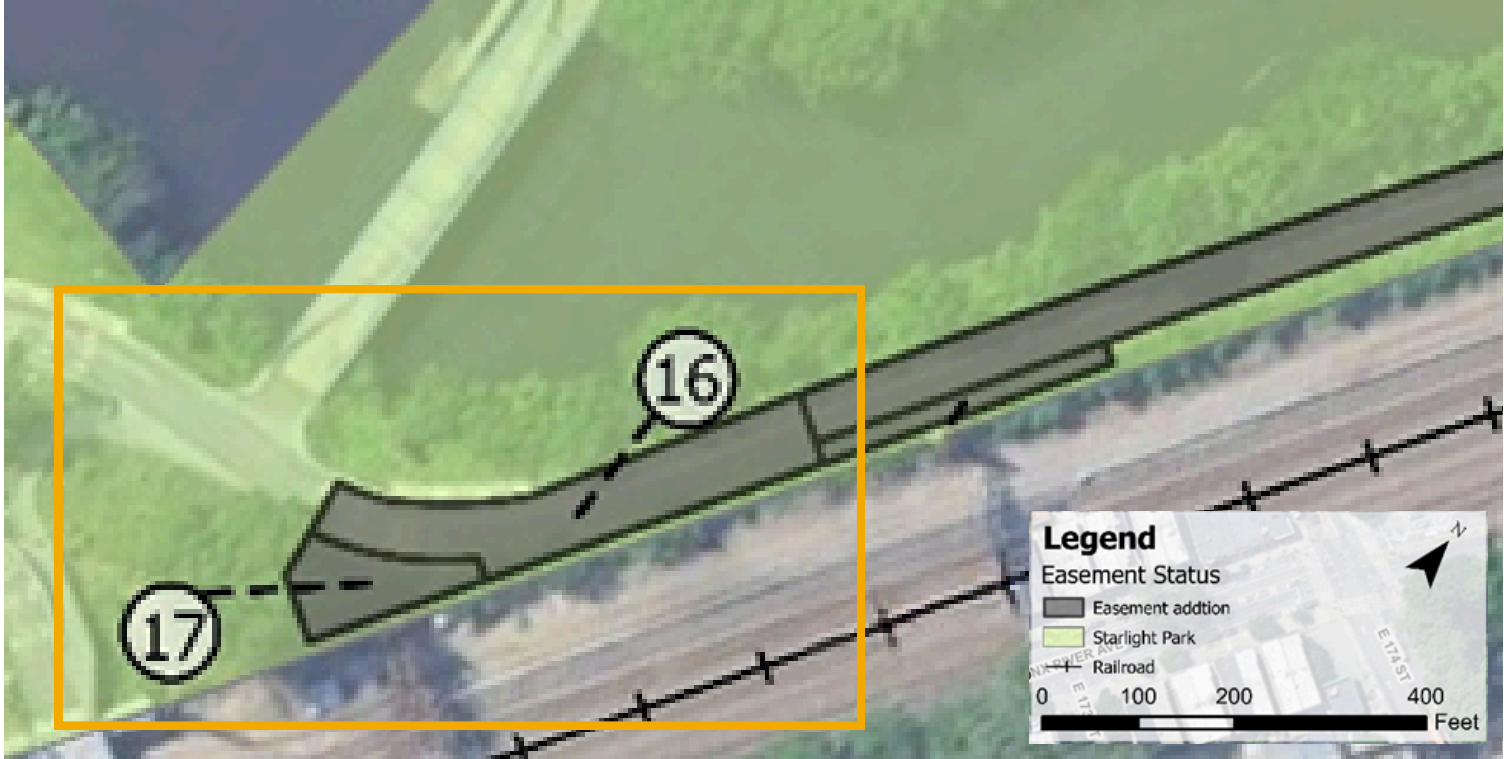


Figure 1: Additional easements (sections 16 & 17)



Figure 2: Additional easement (section 6)