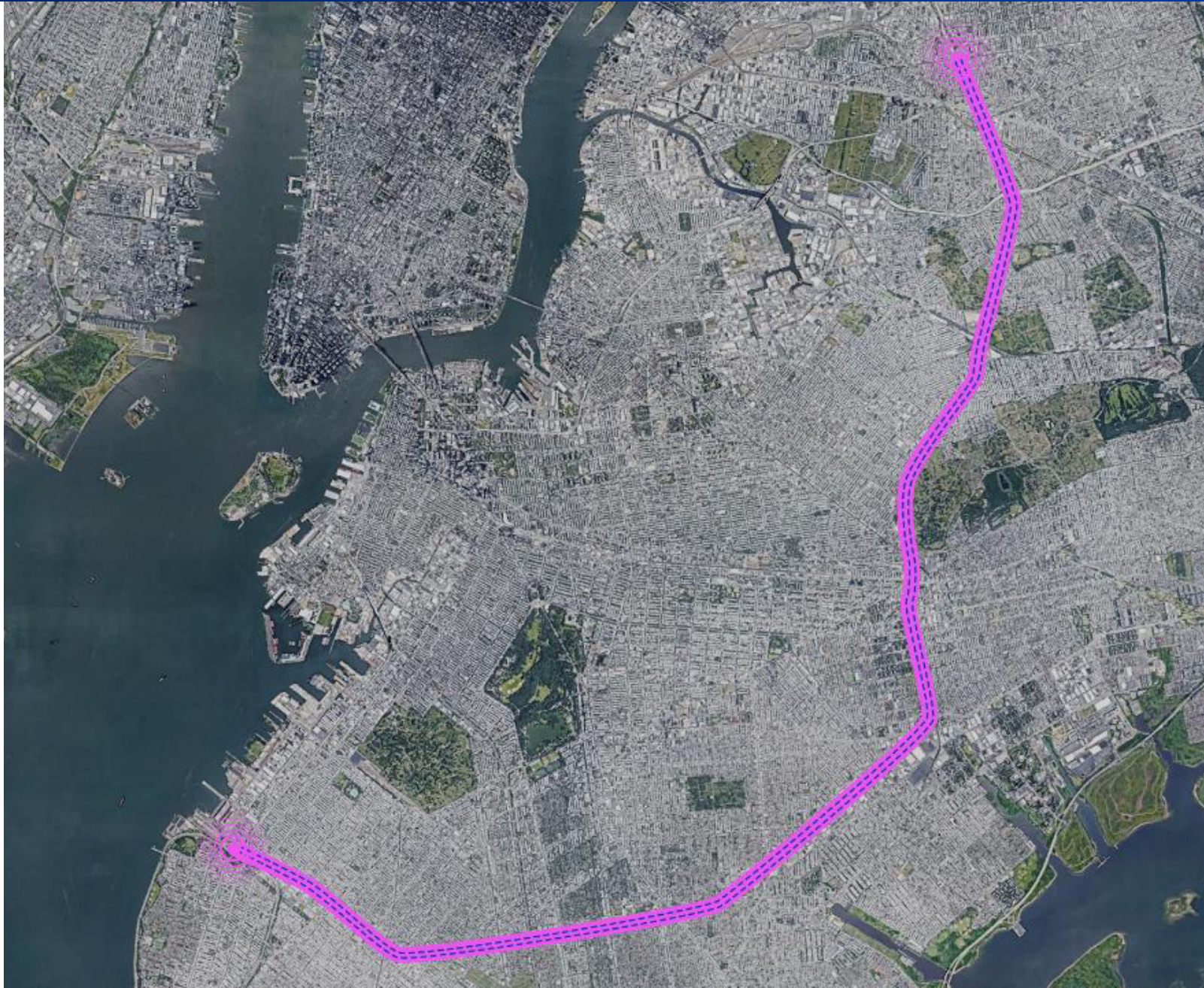


May 26, 2026

Interborough Express

**Community Board Briefing –
Brooklyn Community Board 12**



Agenda

- 01** Introductions
- 02** Project Overview
- 03** Access to Opportunity
- 04** Project Updates
 - Environmental Review
 - Design
- 05** Community Focus Areas
- 06** Next Steps

Project Overview



Project Context

The Interborough Express (IBX) would provide a **transformative new transit connection between Brooklyn & Queens**

- It would be built along an existing rail corridor that runs from Sunset Park to Jackson Heights and is currently used solely for freight
- The IBX would **add passenger service** while preserving freight service
- The Southern portion (~11 miles) is owned by LIRR and operated by New York & Atlantic Railway
- The Northern portion in Queens (~3 miles) is owned by CSX



Project History

- **1876** Passenger service began as part of the New York and Manhattan Beach Railway
- **1924** Passenger service on the line ceased
- **1996** Regional Plan Association (RPA) releases the Third Regional Plan, proposing a new transit link
- **2022** Interborough Express Feasibility Report released; Governor Hochul directs the MTA to begin environmental review process
- **2023** Planning and Environmental Linkages study released; Environmental review work begins
- **2024** Project receives NYS funding to begin design
- **2025** IBX receives funding in MTA's Capital Plan; Project enters design phase; SEQRA scoping process begins



IBX Station Locations

The current station program was developed to **maximize connections** within MTA networks and major arterial roadways

18 IBX stations

13 IBX stations with subway transfers

17 Subway lines connecting with IBX



50+

Current bus route connections

LIRR

Connections at East New York & Woodside Avenues

160,000 projected daily weekday riders

32 min estimated runtime



Access to Opportunity



Brooklyn Community District 12



Brooklyn Community District 12 is currently served by:

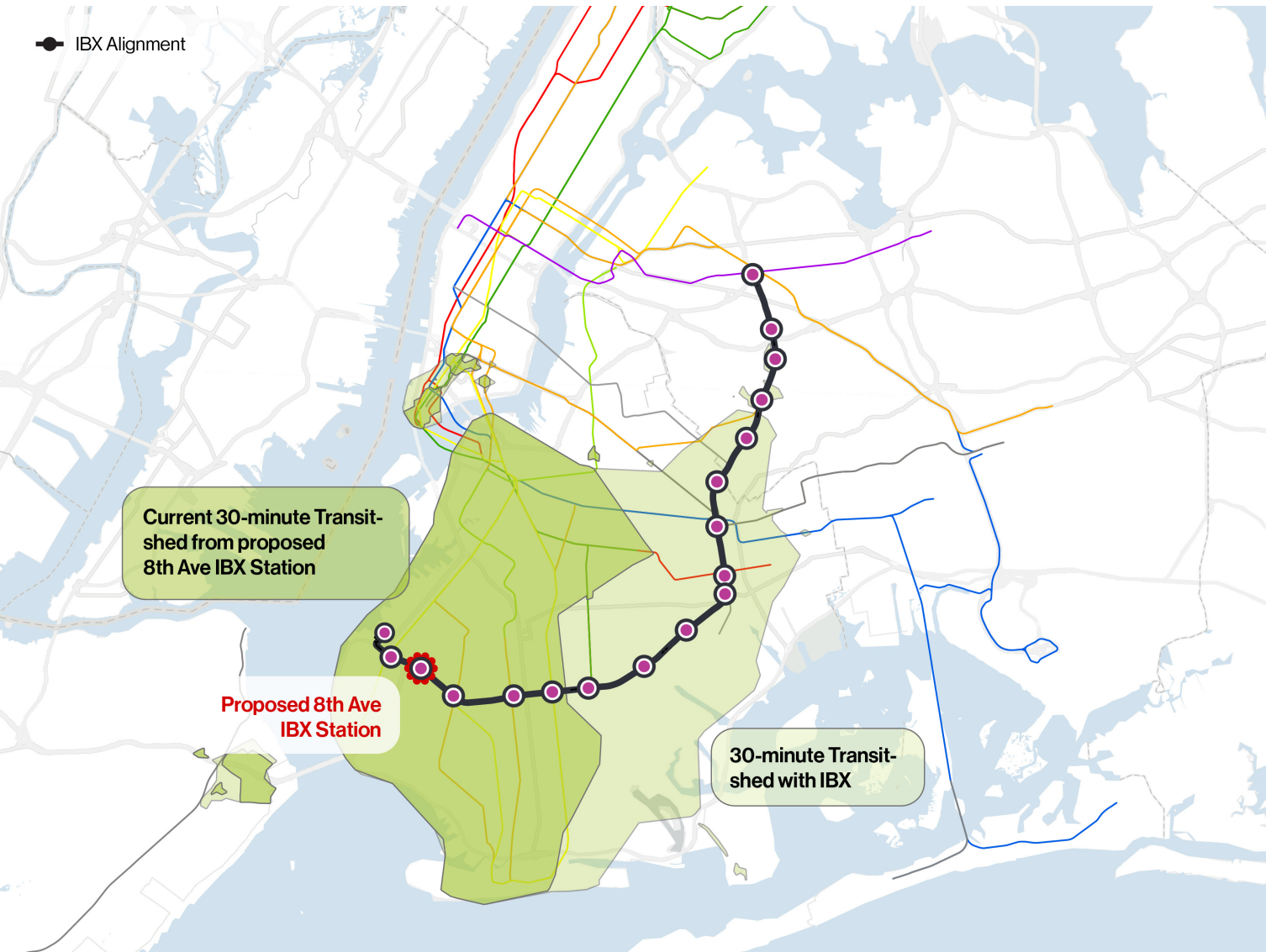
- **13** bus routes (B6, B8, B9, B11, B16, B35, B67, B68, B69, B70, B103, BM3, BM4)
- Subway lines (**NGDF**)

IBX will introduce **three stop** at:

- 8th Avenue
- New Utrecht Avenue
- McDonald Avenue

Exact station locations subject to change

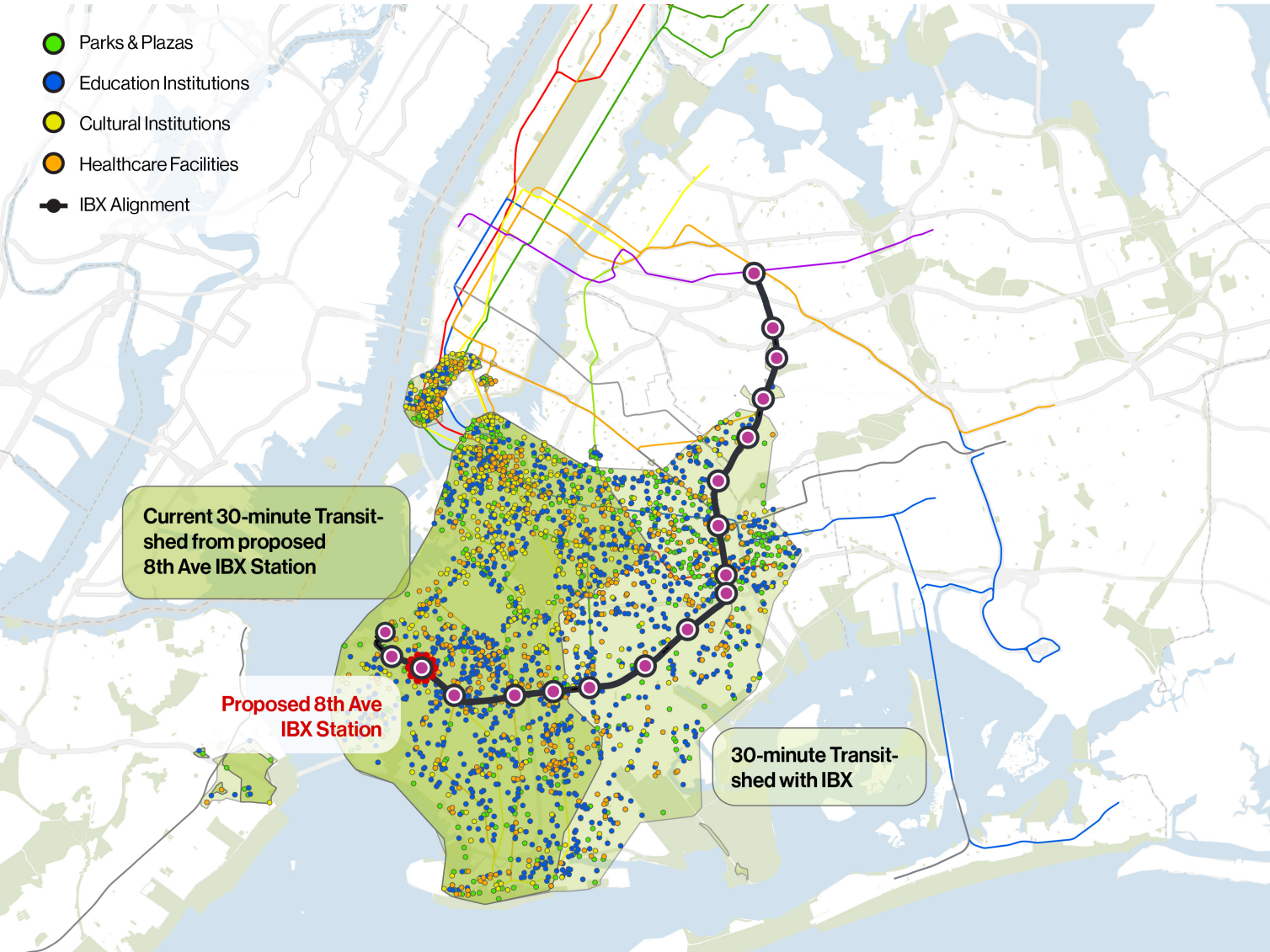
Access to Opportunity: 8th Avenue



IBX **nearly doubles** the land area accessible within a 30-minute public transit trip

- **Residents** gain access to employment hubs, amenities, and recreation
- **Businesses** reach larger customer bases and talent pools
- Newly accessible **destinations** include:
 - Battery Park City
 - Financial District

Access to Opportunity: 8th Avenue



Residents and businesses near **8th Avenue** will gain access to:

1.8x jobs

From 469K to 845K

1.7x healthcare facilities

From 493 to 838

1.4x higher education institutions

From 20 to 28

1.7x daycare & pre-K

From 841 to 1,423

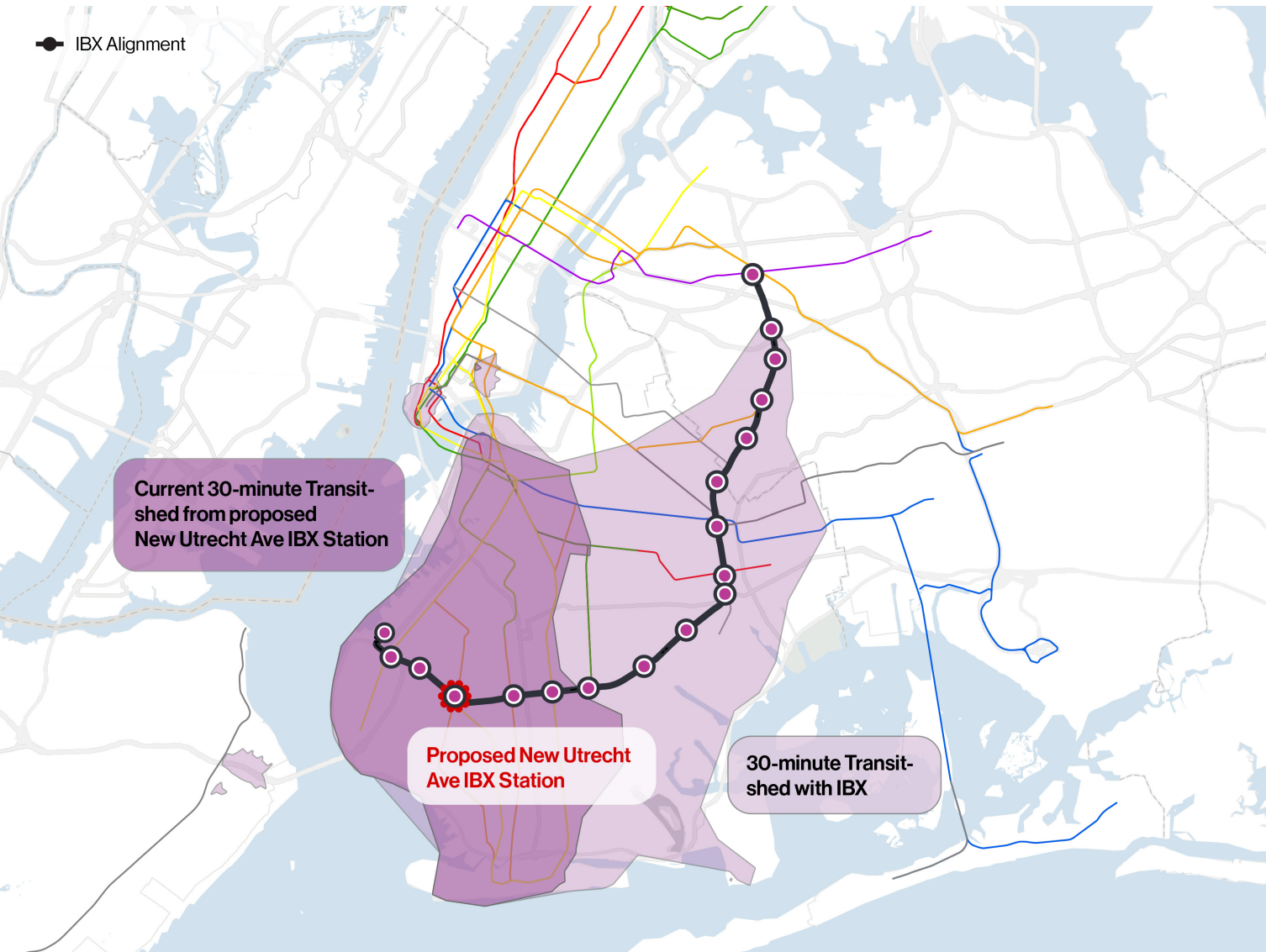
1.6x cultural institutions

From 339 to 528

1.9x working age population

From 1.3M to 2.3M

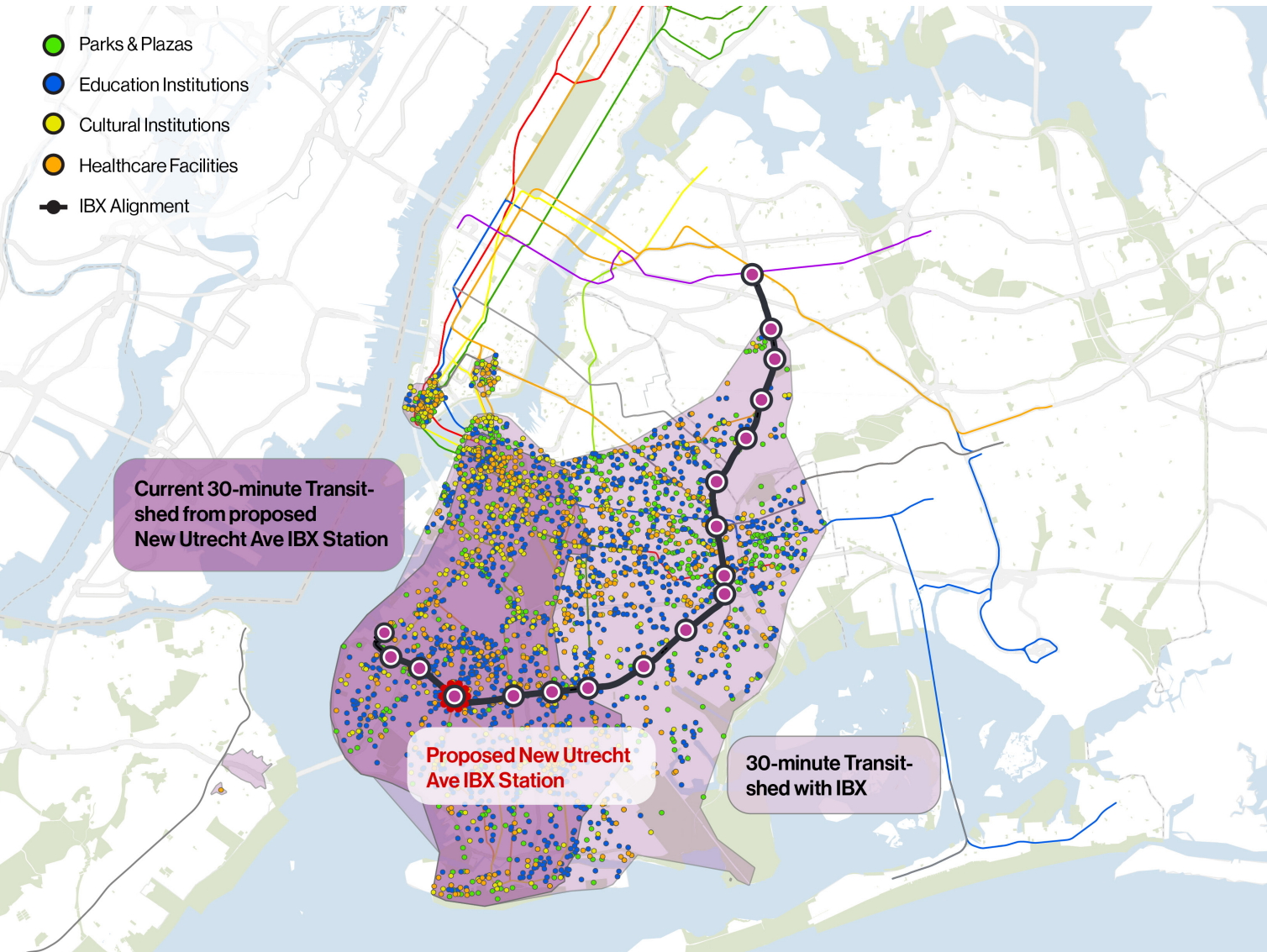
Access to Opportunity: New Utrecht Avenue



IBX **more than doubles** the land area accessible within a 30-minute public transit trip

- **Residents** gain access to employment hubs, amenities, and recreation
- **Businesses** reach larger customer bases and talent pools

Access to Opportunity: New Utrecht Avenue



Residents and businesses near **New Utrecht Avenue** will gain access to:

1.8x jobs

From 478K to 837K

2.1x healthcare facilities

From 419 to 872

2x higher education institutions

From 12 to 24

1.9x daycare & pre-K

From 794 to 1,489

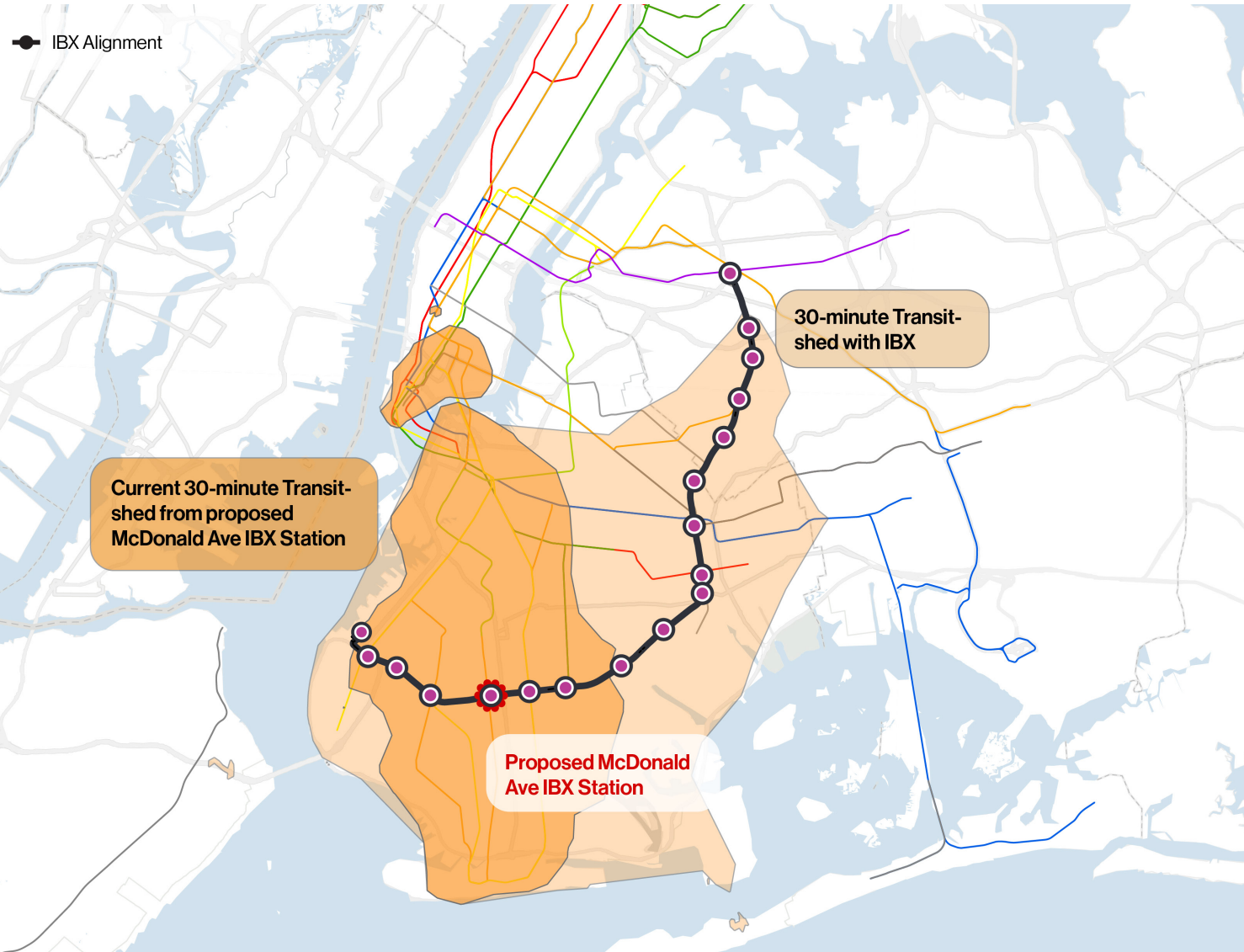
1.9x cultural institutions

From 268 to 512

2.2x working age population

From 1.2M to 2.6M

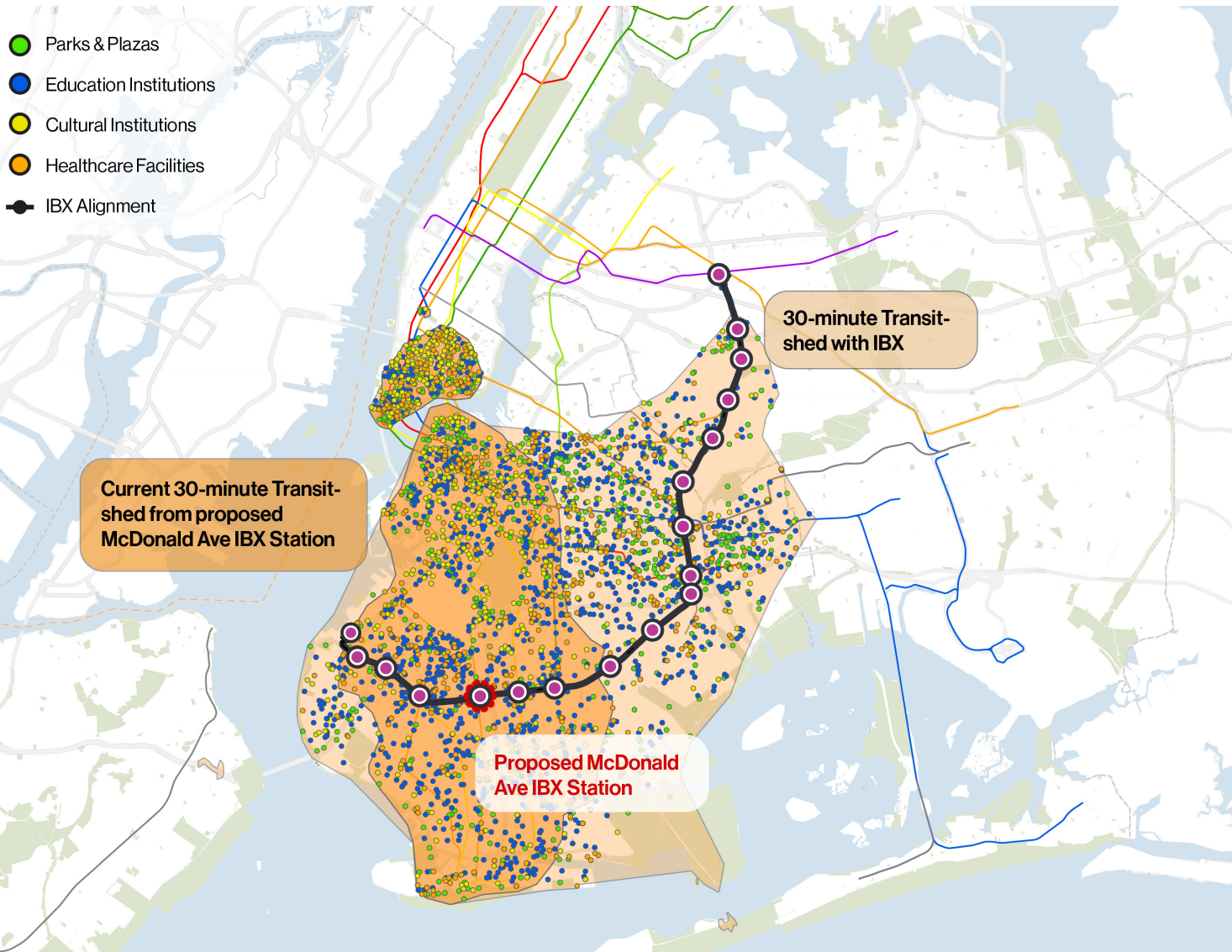
Access to Opportunity: McDonald Avenue



IBX **more than doubles** the land area accessible within a 30-minute public transit trip

- **Residents** gain access to employment hubs, amenities, and recreation
- **Businesses** reach larger customer bases and talent pools
- Newly accessible **destinations** include:
 - Bay Ridge
 - Far Rockaway beaches
 - Jackson Heights
 - Sunset Park

Access to Opportunity: McDonald Avenue



Residents and businesses near **McDonald Avenue** will gain access to:

2.1x jobs

From 510K to 1.1M

2.2x healthcare facilities

From 435 to 1K

2.2x higher education institutions

From 15 to 33

1.9x daycare & pre-K

From 854 to 1,616

2.4x cultural institutions

From 301 to 708

2.1x working age population

From 1.3M to 2.8M

Project Updates



Environmental Review



SEQRA Environmental Review

In October 2025, MTA kicked off the environmental review process under the New York State Environmental Quality Review Act (SEQRA)

- MTA completed the Scoping phase in November, hosting two in-person and two virtual Scoping meetings. Over 500 comments were provided.
- Environmental analyses are now underway
- A final Scoping Document will be issued this year, with a Draft Environmental Impact Statement (DEIS) to follow



Scoping Meeting in Middle Village, Queens

Property Acquisition

IBX's location **within an existing rail corridor significantly reduces** the need for private property acquisition

- However, a small number of properties will need to be acquired
- MTA is also aware of encroachments into the right of way
- MTA is working to identify these properties and minimize acquisitions to the extent possible
- Acquisition may only begin after the EIS is complete (est. Q4 2026). If acquisition is required, MTA will fully comply with the Uniform Relocation Act and all applicable laws governing the use of eminent domain.



Project Design



Design Process

- MTA has retained an engineering team to **begin design** of the IBX project
- Design is a **two-year process** that includes three workstreams:

Due Diligence
<ul style="list-style-type: none">• Surveys• Geotech• Environmental• Structure inspections

Civil Design
<ul style="list-style-type: none">• Site work• Utilities• Structures• Track work

System Design
<ul style="list-style-type: none">• Stations• Operations facility• Storage yard• Power, train control, communications

- MTA's design team will also assist with procurement of construction contracts

Due Diligence: Pre-Design In Brooklyn

- Pre-design is when **sites are analyzed in detail**
- This work tells MTA about project feasibility – and **changes to earlier assumptions**
- The design team has distributed flyers and contacted properties close to work sites to ensure coordination and minimal disruption

Field Work Underway	Completion
Geotechnical Investigation Evaluates soil, rock, groundwater conditions	
Surveying Models conditions in 3D	
Structures Inspections Assesses integrity of nearby infrastructure, like bridges	



Soil Boring Operations within LIRR Bay Ridge Branch

Systems Design: Stations & Urban Realm

Since Fall 2025, MTA's design team has conducted site investigations, developed station prototypes, and analyzed critical factors such as fire and life safety

- **Design is prioritizing** the passenger experience, neighborhood interfaces, accessibility, and connection with other modes of transportation
- This Spring, MTA will host a series of **public workshops** to ask for input on these and related topics:
 - Safety
 - Wayfinding
 - Street lighting
 - Passenger information products
 - Treatments for fencing/barriers



Prototype of Station Entrance (Illustrative Only)

Community Focus Areas



Stormwater Management

As part of design, MTA and their design team are developing a **resilience plan to mitigate stormwater flooding** throughout the corridor

- MTA continues to **meet with NYCDEP** to coordinate stormwater modeling, existing system connection, and future mitigation plans
- Resilience plan design is prioritizing public safety, operational resilience, and impacts to adjacent neighborhoods, particularly during storm events



Track Ponding at Entrance to 65th Street Yard

Electrical Grid Capacity



MTA and their design team are **working with ConEd** to ensure IBX's electrical needs can be met by the existing grid – and that any grid improvements resulting from IBX also benefit communities

- IBX's electrical design is **prioritizing** public safety and resilience, overall impact, and vehicle performance under different conditions
- Upcoming public outreach will ask for feedback on substation architecture to blend with the existing community fabric

Next Steps



Upcoming Public Outreach



- MTA expects to ask for your feedback at three key stages over the next year:
 - To inform **design decisions**, including about stations, urban realm connections, and vehicle layout
 - To receive formal comment on the **DEIS** as part of New York's SEQRA process
 - To inform the **draft design** concepts developed during preliminary engineering
- MTA welcomes your input on locations, languages, and groups or individuals to include in this outreach
- To date, MTA has hosted: 12 open houses, 10 pop ups, four SEQRA scoping meetings, and quarterly Community Council meetings

Open House at the Queens Public Library in Ridgewood

Upcoming Public Workshop Dates

- Join the MTA at one of the six upcoming, in-person, interactive public workshops:
 - **Tuesday, April 28, 2026, 6–8 PM – PS 7Q (Jackson Heights) – *Completed***
 - **Saturday, May 2, 2026, 10AM-12PM – Christ the King (Middle Village) – *Completed***
 - **Thursday, May 7, 2026, 6–8 PM – PS 235K (East Flatbush) – *Completed***
 - **Wednesday, May 13, 2026, 6–8 PM – Maimonides Medical Center (Borough Park) – *Completed***
 - **Thursday, May 28, 2026, 6–8 PM – PS 88Q (Ridgewood)**
 - **Saturday, May 30, 2026, 10 AM–12 PM – East New York Arts and Civic High School (East New York)**

Help Shape the Interborough Express (IBX)

SPRING 2026

Join us for in-person, interactive public workshops about the proposed light rail connection between Brooklyn and Queens

Participants will be able to:

- Share your priorities for stations and train design, and your experience using transit
- Hear background information and recent updates on the project
- Have opportunities to ask the project team questions
- Participate in family-friendly activities – all are encouraged to attend!

PLEASE JOIN US FOR AN UPCOMING WORKSHOP

<ul style="list-style-type: none"> Tuesday, April 28, 2026, 6–8 PM – PS 7Q (Queens: 80-55 Cornish Ave, Elmhurst, NY 11373) Saturday, May 2, 2026, 10AM-12PM – Christ the King (Queens: 68-02 Metropolitan Ave, Middle Village, NY 11379) Thursday, May 7, 2026, 6–8 PM – PS 235K (Brooklyn: 5811 Ditmas Ave, Brooklyn, NY 11203) 	<ul style="list-style-type: none"> Wednesday, May 13, 2026, 6–8 PM – Maimonides Medical Center (Brooklyn: 4802 10th Ave, Brooklyn, NY 11219) Thursday, May 28, 2026, 6–8 PM – PS 88Q (Queens: 60-85 Catalpa Ave, Ridgewood, NY 11385) Saturday, May 30, 2026, 10 AM–12 PM – East New York Arts and Civic High School (Brooklyn: 800 Van Siclen Ave, Brooklyn, NY 11207)
--	---

WHAT TO EXPECT IN 2026

The environmental review and design processes are both active, and each has public engagement opportunities.

ENVIRONMENTAL REVIEW

Nov 2025

Scoping meetings

Fall/Winter 2026

Draft EIS

DESIGN

Spring 2026

Input on design priorities

Fall/Winter 2026

Feedback on draft design

WE ARE HERE

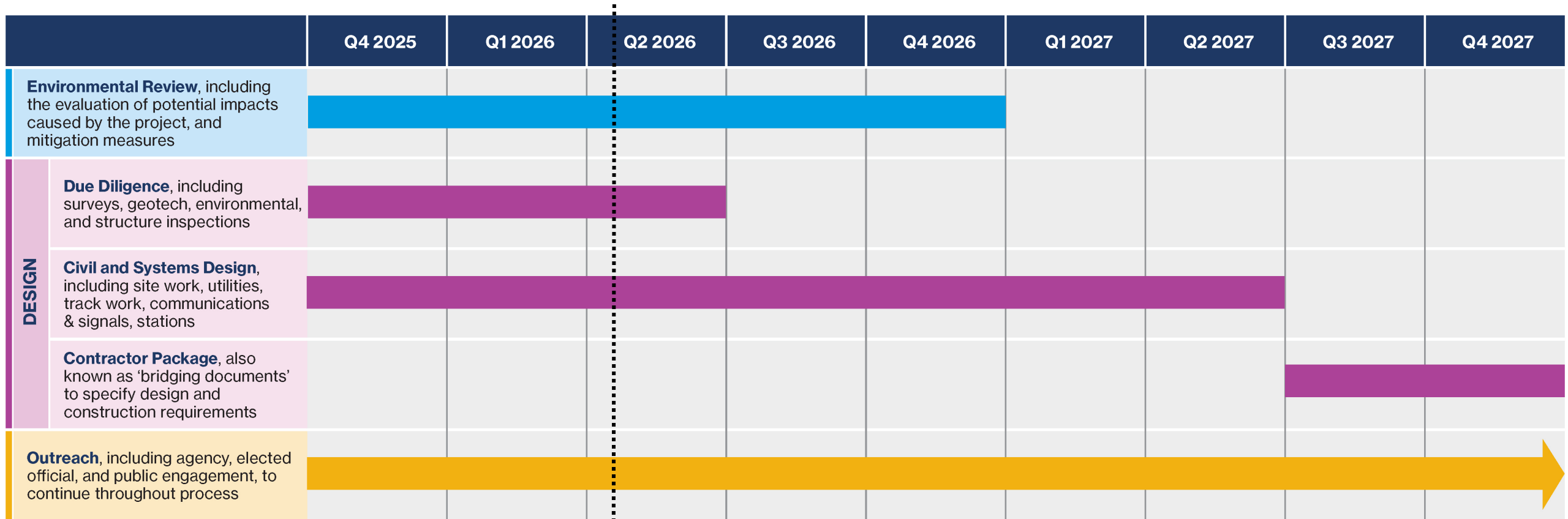
WE WANT TO HEAR FROM YOU!

Scan the QR code for an IBX survey

For more information please visit: mta.info/IBX

For translation or interpretation into languages other than English and Spanish, please contact us with advance notice at IBXoutreach@mtacd.org

Next Steps



We Are Here



***Scan the QR code to
share your input!***

We want to hear from you!

Take the IBX survey to share your input on design priorities to help shape the Interborough Express.

Survey available in English and Spanish.

Q&A



Thank you!

