



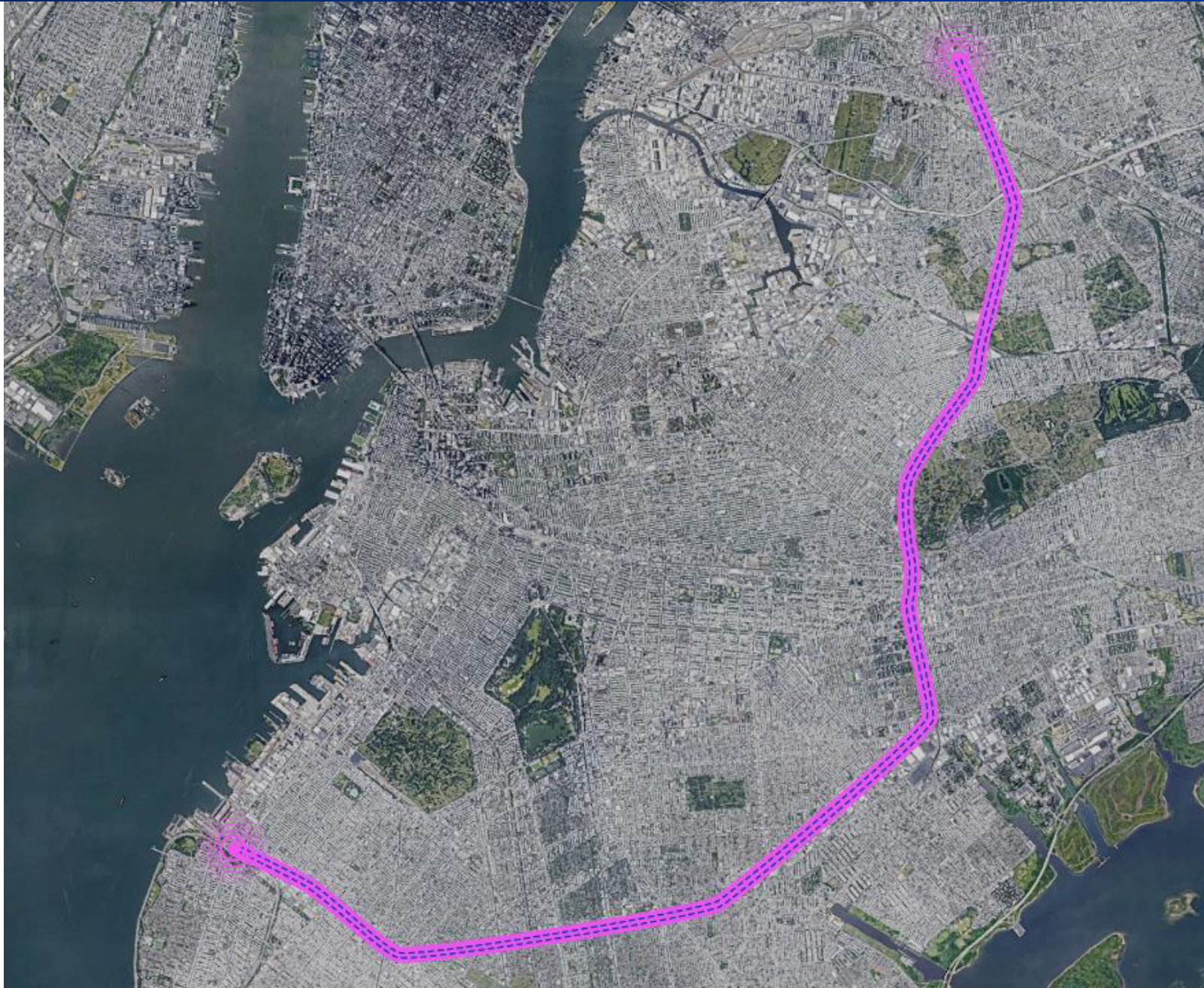
May 5, 2026

# Interborough Express

Community Board Briefing –  
Queens Community Board 2



Construction &  
Development



# Agenda

- 01** Introductions
- 02** Project Overview
- 03** Access to Opportunity
- 04** Project Updates
  - Environmental Review
  - Design
- 05** Community Focus Areas
- 06** Next Steps

# Project Overview



# Project Context

The Interborough Express (**IBX**) would provide a **transformative new transit connection between Brooklyn & Queens**

- It would be built along an existing rail corridor that runs from Sunset Park to Jackson Heights and is currently used solely for freight
- The IBX would **add passenger service** while preserving freight service
- The Southern portion (~11 miles) is owned by LIRR and operated by New York & Atlantic Railway
- The Northern portion in Queens (~3 miles) is owned by CSX



# Project History

- **1876** Passenger service began as part of the New York and Manhattan Beach Railway
- **1924** Passenger service on the line ceased
- **1996** Regional Plan Association (RPA) releases the Third Regional Plan, proposing a new transit link
- **2022** Interborough Express Feasibility Report released; Governor Hochul directs the MTA to begin environmental review process
- **2023** Planning and Environmental Linkages study released; Environmental review work begins
- **2024** Project receives NYS funding to begin design
- **2025** IBX receives funding in MTA's Capital Plan; Project enters design phase; SEQRA scoping process begins



# IBX Station Locations

The current station program was developed to **maximize connections** within MTA networks and major arterial roadways

**18** IBX stations

**13** IBX stations with subway transfers

**17** Subway lines connecting with IBX



**50+**

Current bus route connections

**LIRR**

Connections at East New York & Woodside Avenues

**160,000** projected daily weekday riders

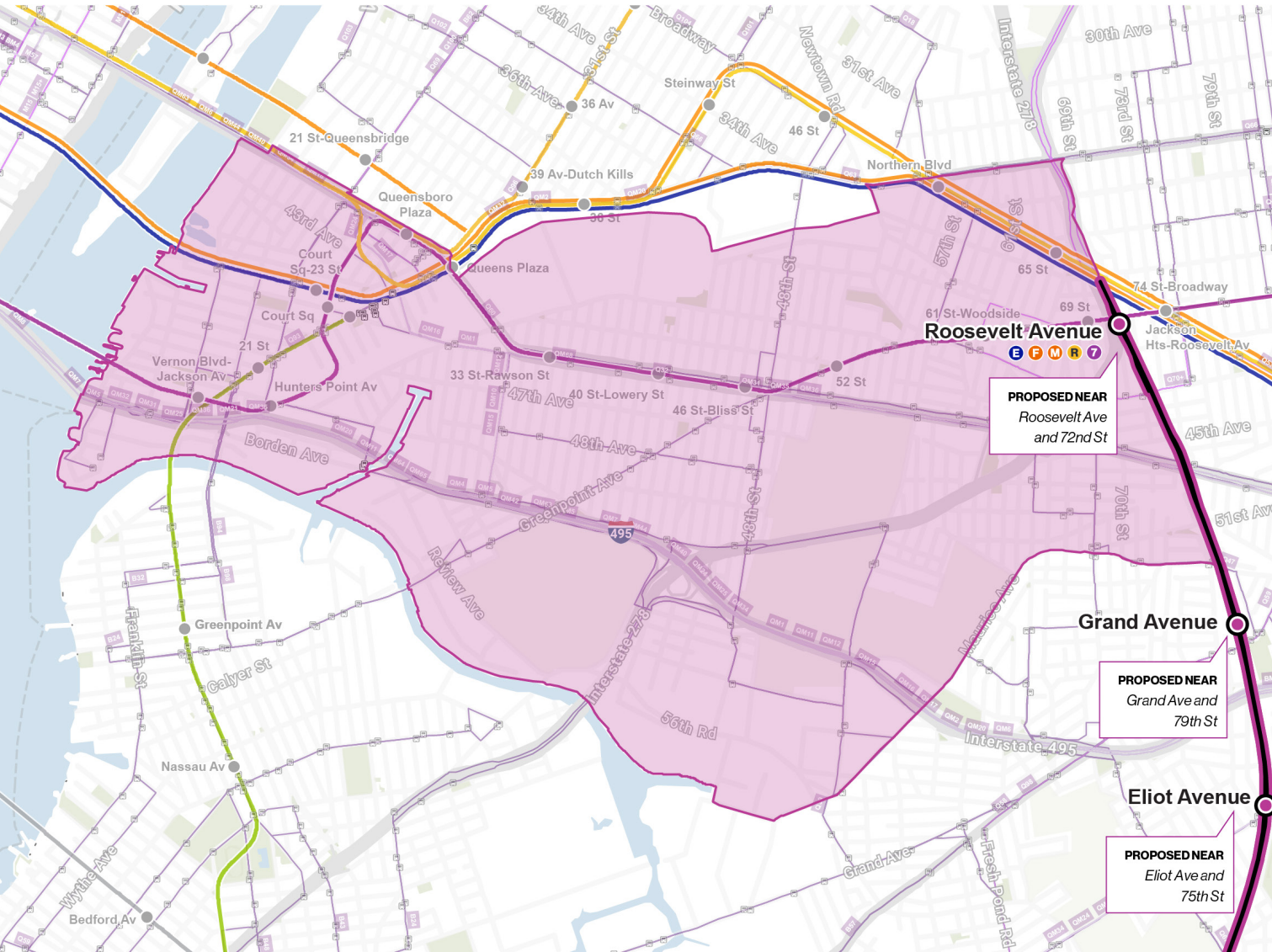
**32 min** estimated runtime



# Access to Opportunity



# Queens Community District 2



Queens Community District 2 is currently served by:

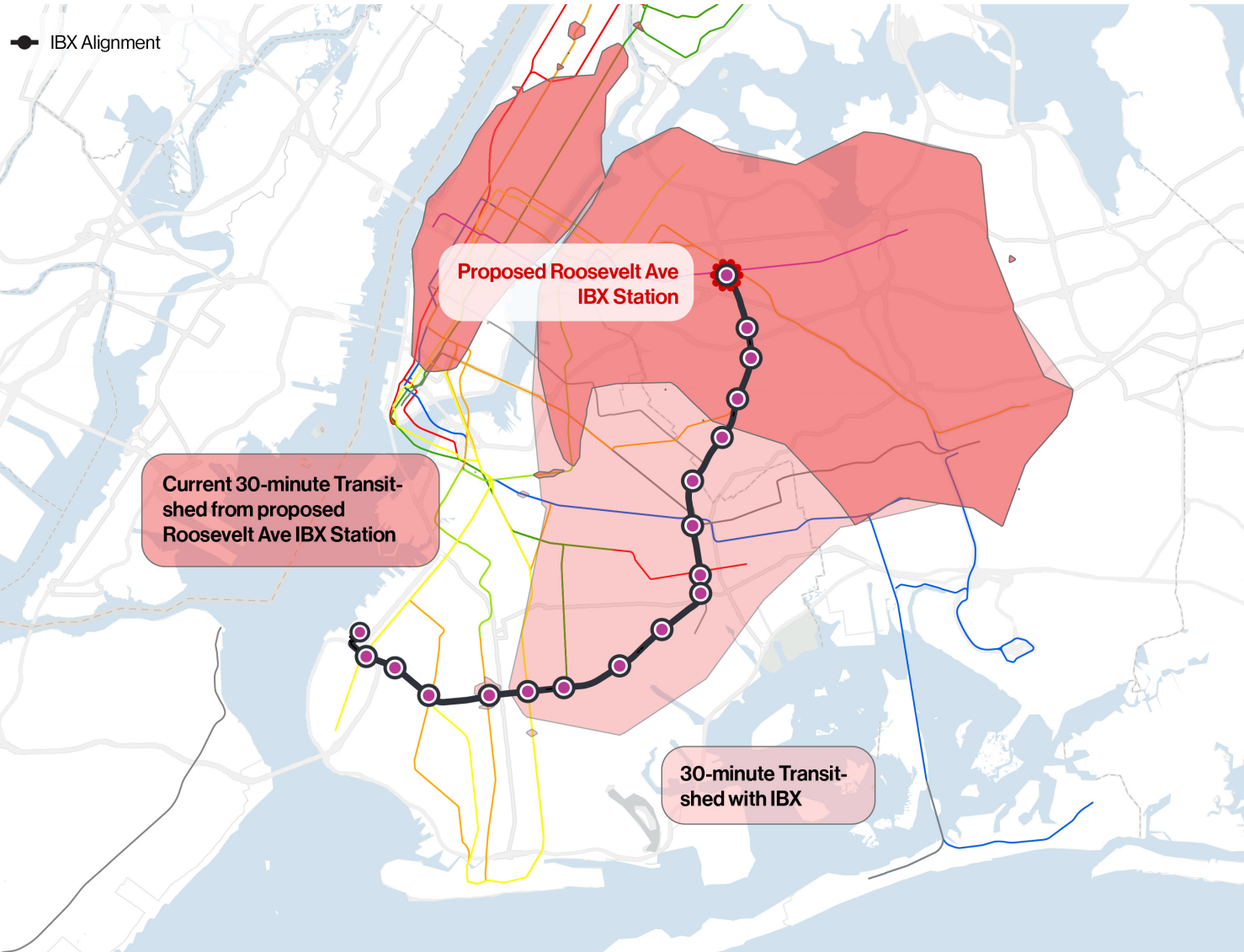
- **23** bus routes (B24, B32, B62, B94, B98, Q18, Q32, Q39, Q47, Q53+, Q60, Q63, Q66, Q67, Q69, Q70+, Q93, Q96, Q100, Q101, Q102, Q103, Q104)
- Subway lines (**EFMR7G**)

IBX will introduce **one stop** at:

- Roosevelt Avenue

*Exact station locations subject to change*

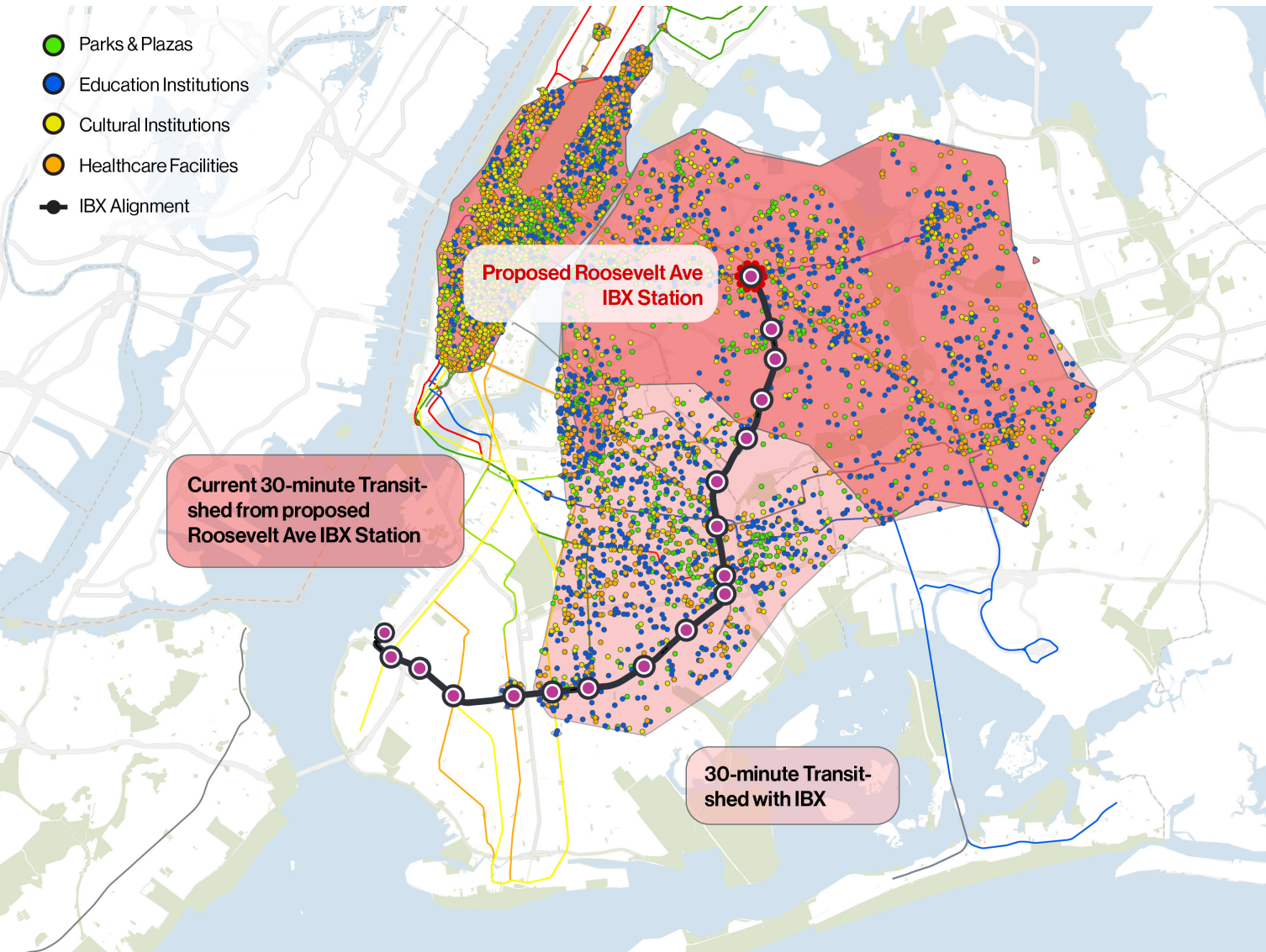
# Access to Opportunity: Roosevelt Avenue



IBX expands the land area accessible within a 30-minute public transit trip by **53%**

- **Residents** gain access to employment hubs, amenities, and recreation
- **Businesses** reach larger customer bases and talent pools
- Newly accessible **destinations** include:
  - Flatbush
  - Crown Heights
  - East New York

# Access to Opportunity: Roosevelt Avenue



Residents and businesses near **Roosevelt Avenue** will gain access to:

**1.1x jobs**

From 2.3M to 2.7M

**1.5x healthcare facilities**

From 937 to 1,443

**1.1x higher education institutions**

From 65 to 74

**1.6x daycare & pre-K**

From 1,124 to 1,847

**1.2x cultural institutions**

From 1,004 to 1,241

**1.6x working age population**

From 2.4M to 3.8M

# Project Updates



# Environmental Review



# SEQRA Environmental Review

In October 2025, MTA kicked off the environmental review process under the New York State Environmental Quality Review Act (SEQRA)

- MTA completed the Scoping phase in November, hosting two in-person and two virtual Scoping meetings. Over 500 comments were provided.
- Environmental analyses are now underway
- A final Scoping Document will be issued this year, with a Draft Environmental Impact Statement (DEIS) to follow



# Property Acquisition

IBX's location **within an existing rail corridor significantly reduces** the need for private property acquisition

- However, a small number of properties will need to be acquired
- MTA is also aware of encroachments into the right of way
- MTA is working to identify these properties and minimize acquisitions to the extent possible
- Acquisition may only begin after the EIS is complete (est. Q4 2026). If acquisition is required, MTA will fully comply with the Uniform Relocation Act and all applicable laws governing the use of eminent domain.



# Project Design



# Design Process

- MTA has retained an engineering team to **begin design** of the IBX project
- Design is a **two-year process** that includes three workstreams:

Due Diligence
<ul style="list-style-type: none"><li>• Surveys</li><li>• Geotech</li><li>• Environmental</li><li>• Structure inspections</li></ul>




Civil Design
<ul style="list-style-type: none"><li>• Site work</li><li>• Utilities</li><li>• Structures</li><li>• Track work</li></ul>

System Design
<ul style="list-style-type: none"><li>• Stations</li><li>• Operations facility</li><li>• Storage yard</li><li>• Power, train control, communications</li></ul>

- MTA's design team will also assist with procurement of construction contracts

# Due Diligence: Pre-Design In Queens

- Pre-design is when **sites are analyzed in detail**
- This work tells MTA about project feasibility – and **changes to earlier assumptions**
- The design team has distributed flyers and contacted properties close to work sites to ensure coordination and minimal disruption

Field Work Underway	Completion
<b>Geotechnical Investigation</b> Evaluates soil, rock, groundwater conditions	 30%
<b>Surveying</b> Models conditions in 3D	 50%
<b>Structures Inspections</b> Assesses integrity of nearby infrastructure, like bridges	 75%



Test Pit Operations on Cypress Avenue

# Systems Design: Stations & Urban Realm

Since Fall 2025, MTA's design team has conducted site investigations, developed station prototypes, and analyzed critical factors such as fire and life safety

- **Design is prioritizing** the passenger experience, neighborhood interfaces, accessibility, and connection with other modes of transportation
- The MTA is currently hosting a series of **public workshops** to ask for input on these and related topics:
  - Safety
  - Wayfinding
  - Street lighting
  - Passenger information products
  - Treatments for fencing/barriers



Prototype of Station Entrance (Illustrative Only)

# Community Focus Areas



# Stormwater Management

As part of design, MTA and their design team are developing a **resilience plan to mitigate stormwater flooding** throughout the corridor

- MTA continues to **meet with NYCDEP** to coordinate stormwater modeling, existing system connection, and future mitigation plans
- Resilience plan design is prioritizing public safety, operational resilience, and impacts to adjacent neighborhoods, particularly during storm events



*Track Ponding at Entrance to 65th Street Yard*

# Electrical Grid Capacity



MTA and their design team are **working with ConEd** to ensure IBX's electrical needs can be met by the existing grid – and that any grid improvements resulting from IBX also benefit communities

- IBX's electrical design is **prioritizing** public safety and resilience, overall impact, and vehicle performance under different conditions
- Upcoming public outreach will ask for feedback on substation architecture to blend with the existing community fabric

# Next Steps



# Upcoming Public Outreach



- MTA expects to ask for your feedback at three key stages over the next year:
  - To inform **design decisions**, including about stations, urban realm connections, and vehicle layout
  - To receive formal comment on the **DEIS** as part of New York's SEQRA process
  - To inform the **draft design** concepts developed during preliminary engineering
- MTA welcomes your input on locations, languages, and groups or individuals to include in this outreach
- To date, MTA has hosted: 12 open houses, 10 pop ups, four SEQRA scoping meetings, and quarterly Community Council meetings


*Open House at the Queens Public Library in Ridgewood*

# Upcoming Public Workshop Dates

- Join the MTA at one of the six upcoming, in-person, interactive public workshops:
  - **Tuesday, April 28, 2026, 6–8 PM – PS 7Q (Jackson Heights) – *Completed***
  - **Saturday, May 2, 2026, 10AM-12PM – Christ the King (Middle Village) – *Completed***
  - **Thursday, May 7, 2026, 6–8 PM – PS 235K (East Flatbush)**
  - **Wednesday, May 13, 2026, 6–8 PM – Maimonides Medical Center (Borough Park)**
  - **Thursday, May 28, 2026, 6–8 PM – PS 88Q (Ridgewood)**
  - **Saturday, May 30, 2026, 10 AM–12 PM – East New York Arts and Civic High School (East New York)**

## Help Shape the Interborough Express (IBX)

SPRING 2026



Join us for in-person, interactive public workshops about the proposed light rail connection between Brooklyn and Queens

Participants will be able to:

- Share your priorities for stations and train design, and your experience using transit
- Hear background information and recent updates on the project
- Have opportunities to ask the project team questions
- Participate in family-friendly activities – all are encouraged to attend!

PLEASE JOIN US FOR AN UPCOMING WORKSHOP

<ul style="list-style-type: none"> <li>• <b>Tuesday, April 28, 2026, 6–8 PM – PS 7Q</b> (Queens: 80-55 Cornish Ave, Elmhurst, NY 11373)</li> <li>• <b>Saturday, May 2, 2026, 10AM-12PM – Christ the King</b> (Queens: 68-02 Metropolitan Ave, Middle Village, NY 11379)</li> <li>• <b>Thursday, May 7, 2026, 6–8 PM – PS 235K</b> (Brooklyn: 5811 Ditmas Ave, Brooklyn, NY 11203)</li> </ul>	<ul style="list-style-type: none"> <li>• <b>Wednesday, May 13, 2026, 6–8 PM – Maimonides Medical Center</b> (Brooklyn: 4802 10th Ave, Brooklyn, NY 11219)</li> <li>• <b>Thursday, May 28, 2026, 6–8 PM – PS 88Q</b> (Queens: 60-85 Catalpa Ave, Ridgewood, NY 11385)</li> <li>• <b>Saturday, May 30, 2026, 10 AM–12 PM – East New York Arts and Civic High School</b> (Brooklyn: 800 Van Siclen Ave, Brooklyn, NY 11207)</li> </ul>
--	---

WHAT TO EXPECT IN 2026

The environmental review and design processes are both active, and each has public engagement opportunities.

ENVIRONMENTAL REVIEW

Nov 2025  
Scoping meetings


Fall/Winter 2026  
Draft EIS

DESIGN

Spring 2026  
Input on design priorities

Fall/Winter 2026  
Feedback on draft design

WE ARE HERE



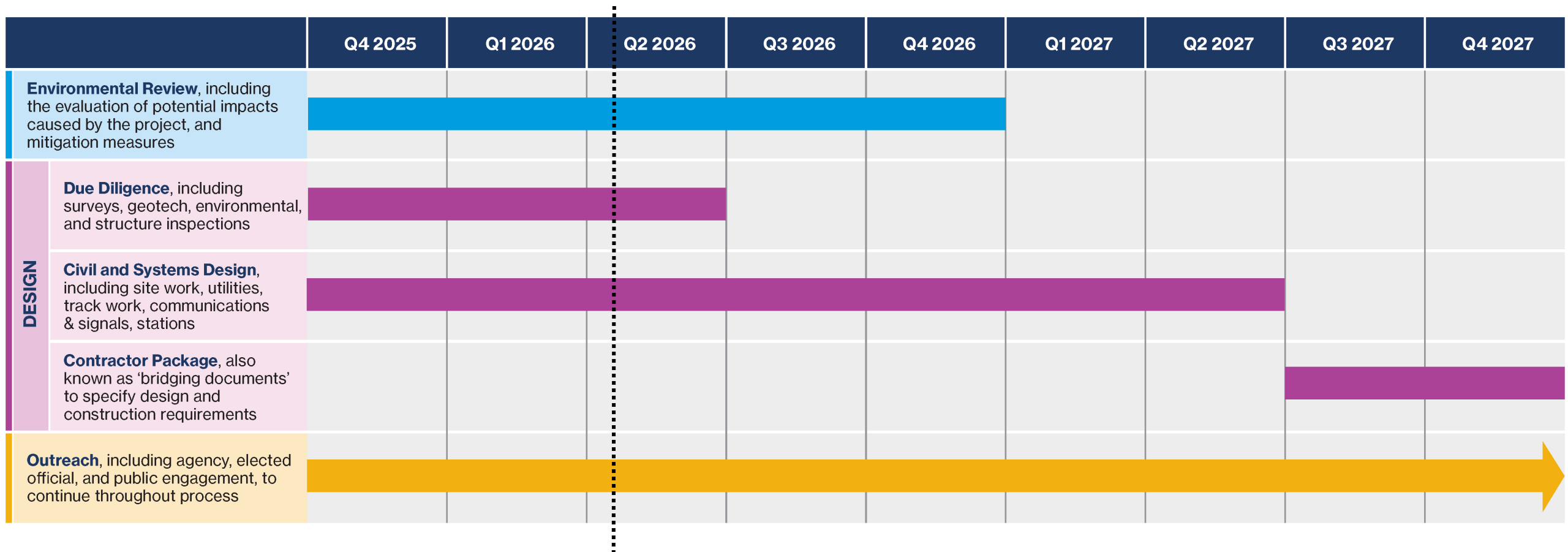
WE WANT TO HEAR FROM YOU!

Scan the QR code for an IBX survey

For more information please visit: [mta.info/IBX](https://mta.info/IBX)

For translation or interpretation into languages other than English and Spanish, please contact us with advance notice at [IBXoutreach@mtacd.org](mailto:IBXoutreach@mtacd.org)

# Next Steps



We Are Here



***Scan the QR code to  
share your input!***

# **We want to hear from you!**

Take the IBX survey to share your input on design priorities to help shape the Interborough Express.

*Survey available in English and Spanish.*

# Q&A



# Thank you!

