

CB11/MAN SAS2 Task Force

SAS2 Project Update

06/24/2026



Agenda

1. Test Blasting and Production Blasting
2. Construction Activities
3. Signage
4. Local Hiring
5. Environmental Monitoring
6. Questions

Controlled Blasting

Test blasting in Lex Yard – Complete

- Confirmed effective blast design.
- Minimal complaints from neighbors.

Controlled production blasting at Lex Yard – Began June 19

- Blasts will continue intermittently Monday through Saturday, 7 a.m. to 7 p.m., aiming to avoid transit rush hours.

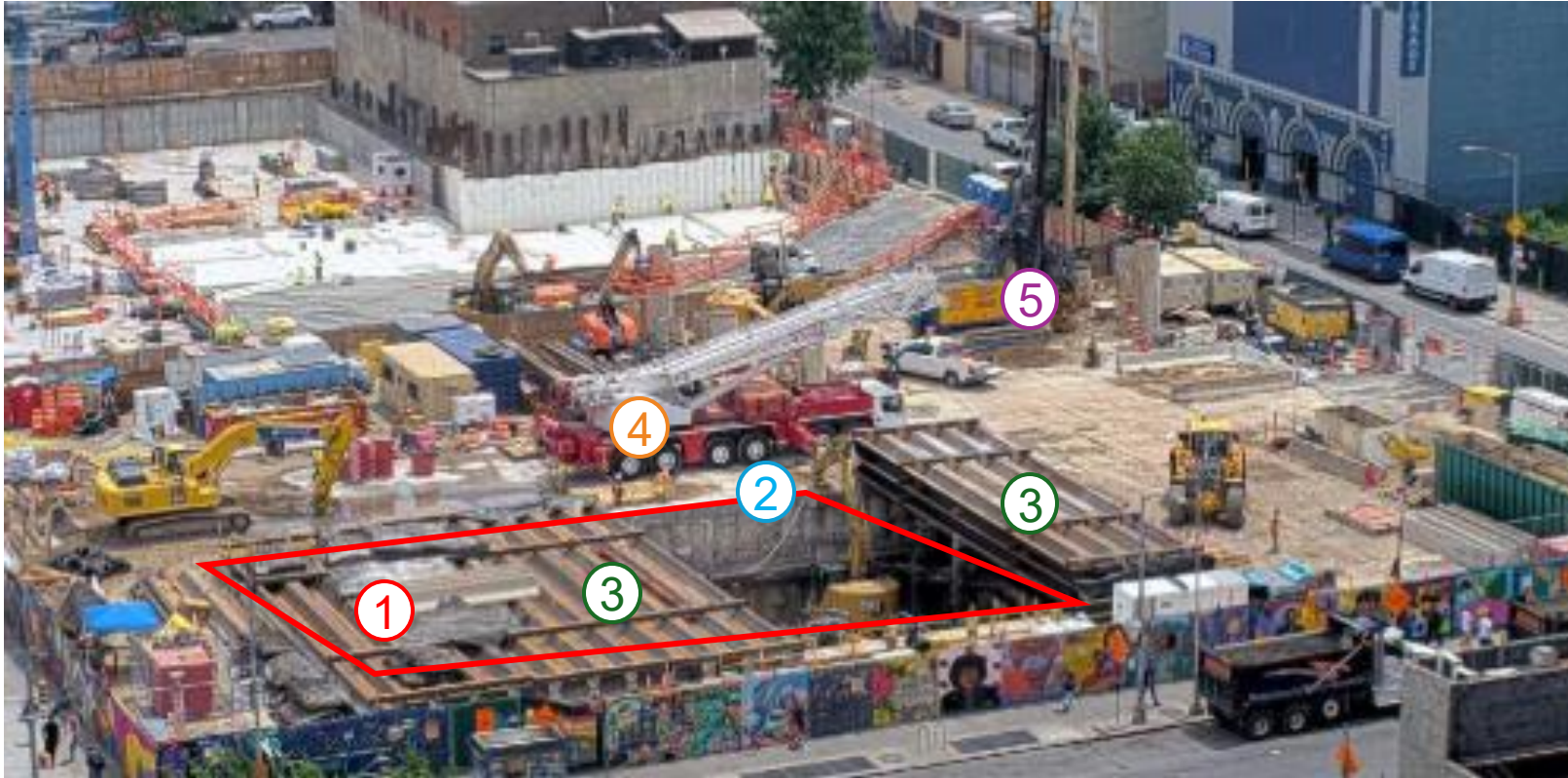
Signal	What to expect
5-minute warning (Blaster preparing to blast)	One (1) long signal (10 seconds long) 5 minutes prior to the blast signal.
1-minute warning (Blaster ready)	Two (2) short signals (5 seconds long) - Blast as soon as possible Blaster in charge may elect to temporarily close adjacent pedestrian and roadway traffic for a short period of time during the blasting.
All clear	Three (3) short signals (5 seconds long) Pedestrian and roadway traffic resumes.



Lex Yard

Entrance 1 Footprint and Blasting Area

Controlled Blasting – Blast Site Vocabulary



1. Entrance 1 Shaft
2. Support of Excavation
3. Shaft Cover
4. Crane that services the shaft
5. Secant Pile Rig currently working on Ancillary 1

Construction Activities

C1

2 Av and 105 St

- Trunk water main installation

2 Av and 106 St

- Overnight pile drilling operations

2 Av and 109 St

- Modifications to pedestrian walkways
- Overnight pile drilling and underpinning operations



Construction Activities

C2

2 Av and 116 St

- Demo of Entrance 1 buildings (2262 & 2264 2nd Ave) – July 2026
- Demo of Ancillary 1 buildings (2240, 2242, & 2246 2nd Ave) – Aug 2026

2 Av and 120 St

- Secant pile installation – Ongoing

125 St

- Controlled blasting and excavation of shafts at Lex Yard – Ongoing
- Controlled blasting in Park Yard – end of July/Aug 2026



Construction Activities

C3

2 Av and 106 St

- Set up of work area at 106 St station Entrance 1 – Complete
- Begin test pitting – This week
- Tree removals – End of June
- Expand Work Zone – End of August

2 Av and 108 St

- Set up of work area at 106 St station Entrance 2 – July 6



Signage

C1

- **Awnings** for businesses from 109-110 St have been installed.
- **Fence wrap** installation is underway.
- **Wayfinding** complete.

C2:

- **Awnings**, no impacts to.
- **Fence wrap** installation is complete for all businesses with MPT.
- **Wayfinding** in progress.



Local Hiring

Contract 2, 3, and 4 Local Hiring (Design Build Team) Goals:

At least **20%** of all work hours must be performed by the following classifications of Local Targeted Workers:

1. **Local Residents:** Individuals whose primary place of residence prior to commencing work on the Project is within specific zip codes immediately around the Work Site (priority).
2. **Tier 1 Economically Disadvantaged Workers:** Individuals whose primary place of residence is in an Economically Disadvantaged Area zip code within 25 miles of the Work Site.
3. **Tier 2 Economically Disadvantaged Workers:** Individuals whose primary place of residence is within any Economically Disadvantaged Area zip code throughout the wider state of New York.

Status Update:

- MTA and is exploring opportunities with Workforce1 to support local hiring initiative including pre-apprentice programs in East Harlem like Non-Traditional Employment for Women(NEW) and Pathways to Apprentice.

Community Air Monitoring Program (CAMP)

- Proactive monitoring program is overseen by the MTA and implemented by an environmental consultant to protect the community from potential environmental hazards.
- Real-time monitoring for weather, dust (PM10), and volatile organic compounds (VOCs)
- Ambient/background levels are measured continuously throughout the workday.

Action Level: Action Level is established to ensure prompt and appropriate response to elevated air particle readings. When the Action Level is triggered:

- “Competent person” stops work,
- Investigates the cause, and
- The contractor adjusts work practices, as necessary.

Coordination with CUNY:

- MTA is discussing with CUNY as a third-party evaluator of SAS2 monitoring programs and practices.

Noise Control Monitoring and Mitigation Plan (NCMMP)

- Proactive monitoring program is overseen by the MTA and implemented by a consultant to monitor community noise levels.
- Equipment-specific noise limits are established and verified routinely in the field.
- During each phase of work, the noise control, monitoring, and mitigation plan is updated to minimize potential impacts to the community.
- Noise level meters monitor real-time impacts to the community. The monitors operate continuously (24/7).

Action Level: When the action level is triggered:

- The source of the noise is investigated.
- If the noise is construction related, work is adjusted to reduce noise.
- Noise levels are continually monitored to ensure the adjustments are compliant with the approved plan.

Other Questions and Concerns from Prior Meetings

1. Check and coordinate with DOT on why right lane is still labeled bus only with traffic shift
 - Coordinating with DOT.
2. Send Uptown Grand copy of WXY development plan
 - Investigating.
3. Share contact for relocation information with CB11
 - Contact will be shared via email.
4. Connect with UMEZ on small business support
 - MTA has connected with UMEZ and looking into opportunities for collaboration.
5. Translation of blasting signs
 - Complete

Community Outreach Contacts

MTA C&D

Joseph O'Donnell, Senior Director – Strategic Public Affairs

Project Management Team

Desiree Gazzo, PMC Outreach Coordinator
Yuki Zheng, PMC Outreach

East Harlem Community Collaborators

Hector Santana, Director of Outreach
Richard Harley, Sr Advisor Engagement 125th
Alex Zamudio, Construction Liaison 116th
Gregory Nyman, CIC Manager
Tashlima Lipi, Construction Liaison 106th
Fred Cannizzaro, Public Relations Specialist
Erica Pooran, Project Manager
Dani Kau, Graphics/Production

Contractor Outreach

Michelle Perez, Contract 1 - Community Outreach
Alejandra Cabrales, Contract 2 - Community Outreach
Aislinn Speranza, Contract 3 - Community Outreach



Second Avenue Subway Phase 2 Community Information Center

69 East 125th Street
212-722-3700
outreach@mtacd.org

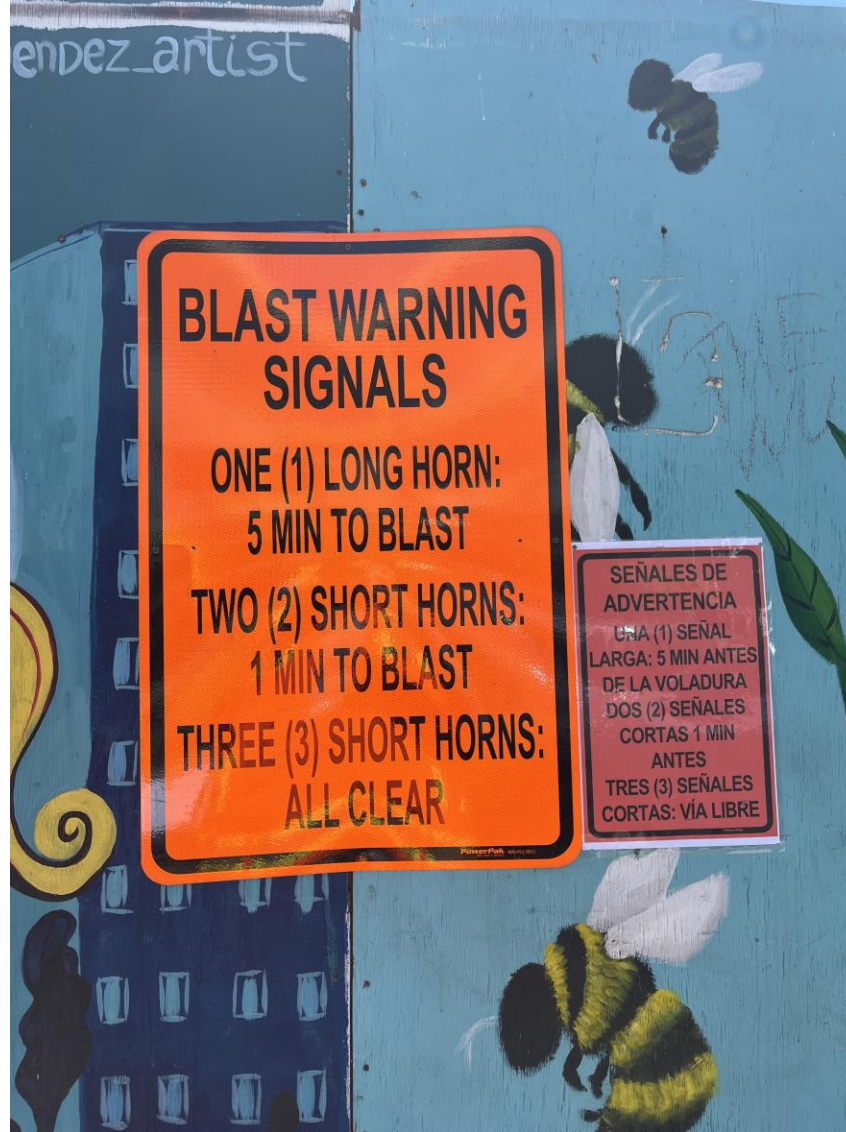
24-hour Hotline
212-693-9520

Hours of Operation
Monday – Friday 9AM- 5PM

Questions?

Appendix

Blasting Sign Translations



Trash on 2 Av



Environmental Monitoring

Dust Monitoring Program (PM10):

- Monitors small dust that can be inhaled; particulate matter less than 10 microns (PM10).
- The USEPA air quality standard for dust is 150 micrograms per cubic meter averaged continuously over 24 hours.
- The Action Level for dust level is 150 micrograms per cubic meter above the ambient level for over 15 minutes; much more protective than the USEPA standard.
- The CAMP dust monitoring program ensures there is no visible dust.

Volatile Organic Compounds (VOCs):

- Volatile Organic Compounds (VOCs) are chemicals that rapidly turn into gases (ie. Acetone and Alcohol) and are often associated with odors.
- The Action Limit for VOCs is 5 volumes for every 1,000,000 volumes of air or 5 parts-per-million (PPM) over the ambient level.

Noise Monitoring:

- A background noise study was performed before the project started. MTA reviewed the background noise study and approved the project noise Action Levels. Project noise action levels are background plus 5 decibels for continuous noise plus 15 decibels for impulsive noise.

Asbestos Abatement Oversight

Asbestos abatement performed, monitored and overseen as per the NYSDOL Industrial Code Rule 56 (ICR56) regulations:

Pre-Abatement Controls:

1. NYS Dept. of Labor (NYSDOL) certified asbestos inspector performs comprehensive sampling of suspect building materials.
2. The samples of building materials are sent to a NYS Dept. of Health (NYSDOH) certified laboratory.
3. The survey report identifies all asbestos-containing materials.
4. The contractor prepares an asbestos abatement plan explaining the safe removal of the asbestos.
5. MTA and PMC reviews and approves the plan prior to commencement of the work.

During- Abatement Controls:

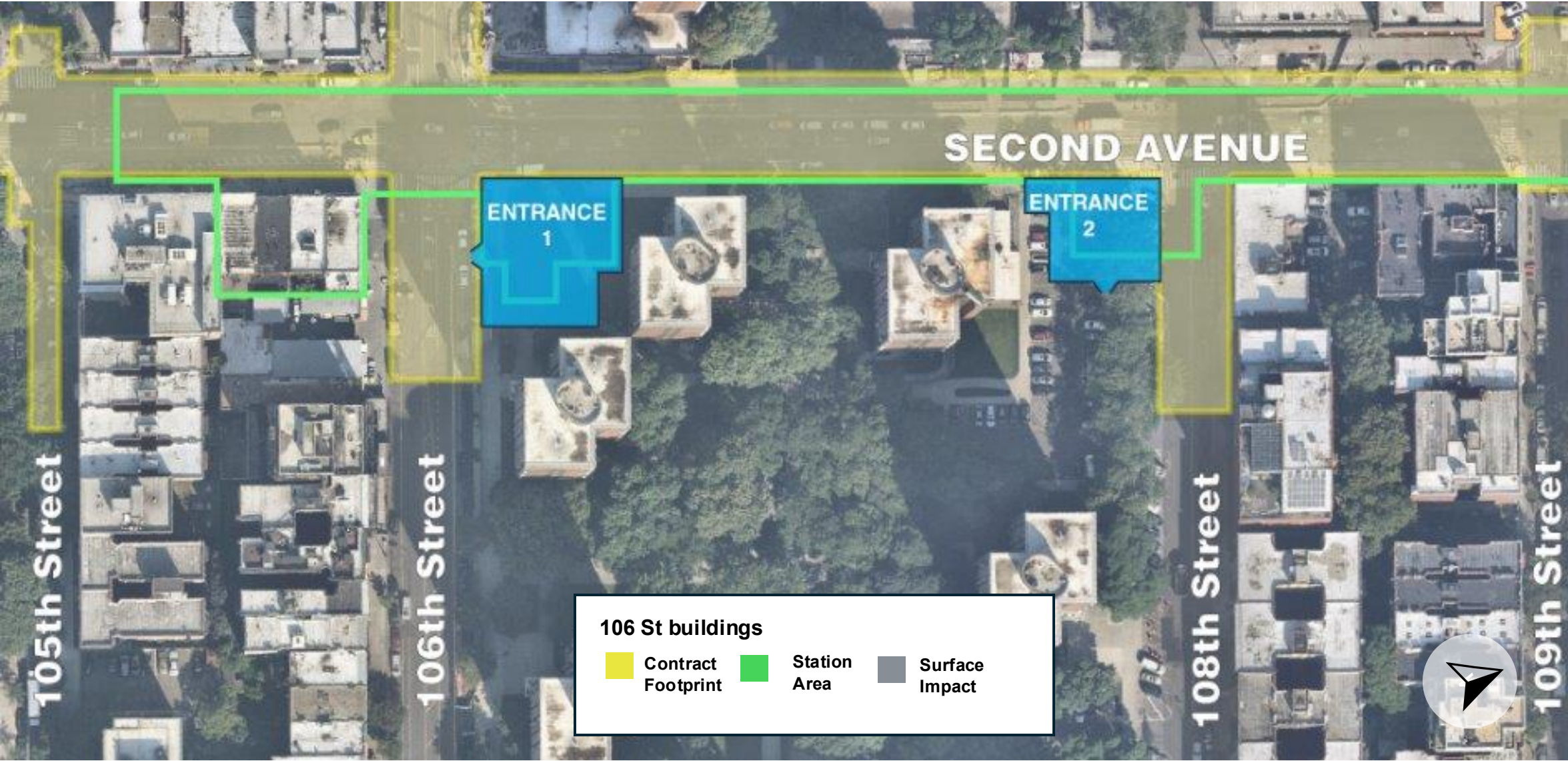
An independent third-party NYSDOL certified Project Monitor provides oversight to help ensure the work is performed safely and in accordance with the plan and regulations. The Project Monitor:

- Is present on-site continuously throughout the asbestos abatement activities.
- Reviews the work area setup, safety controls, and work practices before and during abatement.
- Collects air samples outside the controlled abatement area and inside the work area to monitor air quality and help ensure that asbestos removal is being performed safely.
- Maintains regular communication with the Asbestos Supervisor.
- Works with Asbestos Supervisor to implement adjustments to work methods to maintain safety and compliance when site conditions change or concerns are identified.

Post- Abatement Controls:

1. Final inspection and air testing are performed after abatement is completed to verify that the area is safe for re-occupancy. Clearance letters are created and shared with community following successful inspection.
2. The containment barriers from the controlled area is removed and the area is reopened for normal use ONLY after the area passes the final inspection and air clearance testing.

106 St Station Entrance Work Areas



Phasing – 6/15/26 to End of August 2026



Phasing – End of August 2026 to End of Q1 2027

