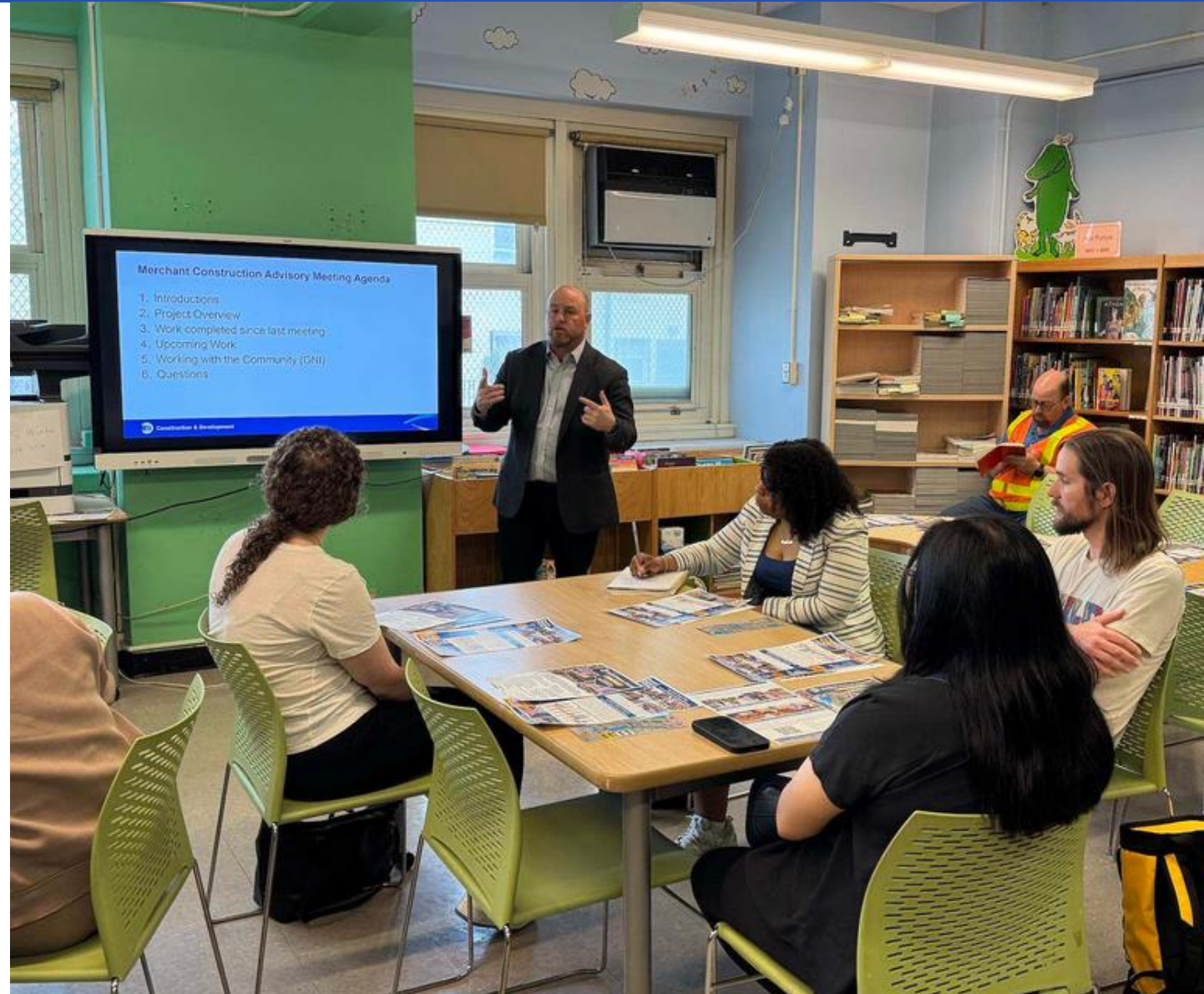


SAS2 Construction Advisory Committee: Merchant Meeting 106 St Station

06/24/2026



Agenda

1. Introductions
2. Project Overview
3. Issues From Last Meeting
4. Status of Contracts
5. Open Discussion

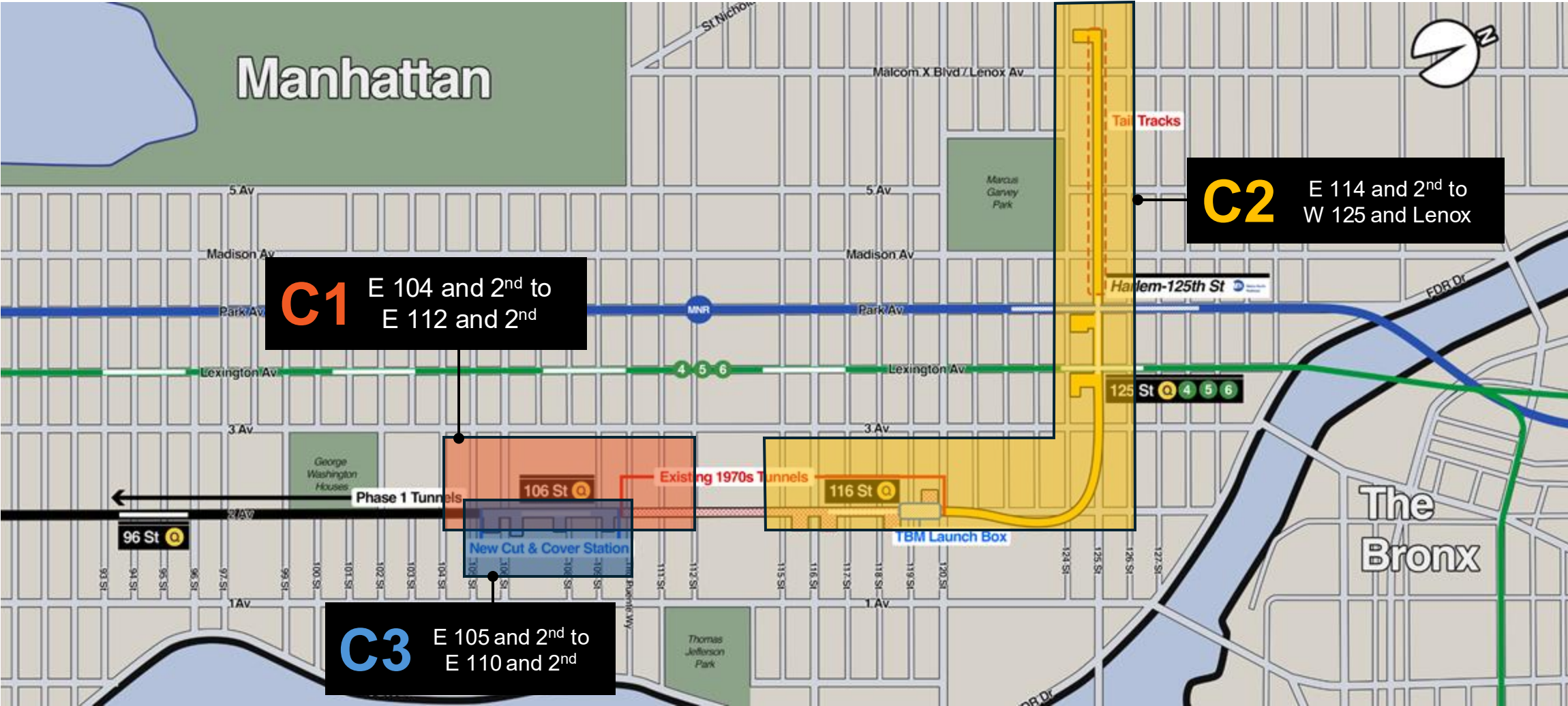
What is the Construction Advisory Committee?

CACs are held quarterly for each of the three station areas to facilitate meaningful two-way dialogue between stakeholders, who have a greater than one-to-one voice, the MTA, and the project team

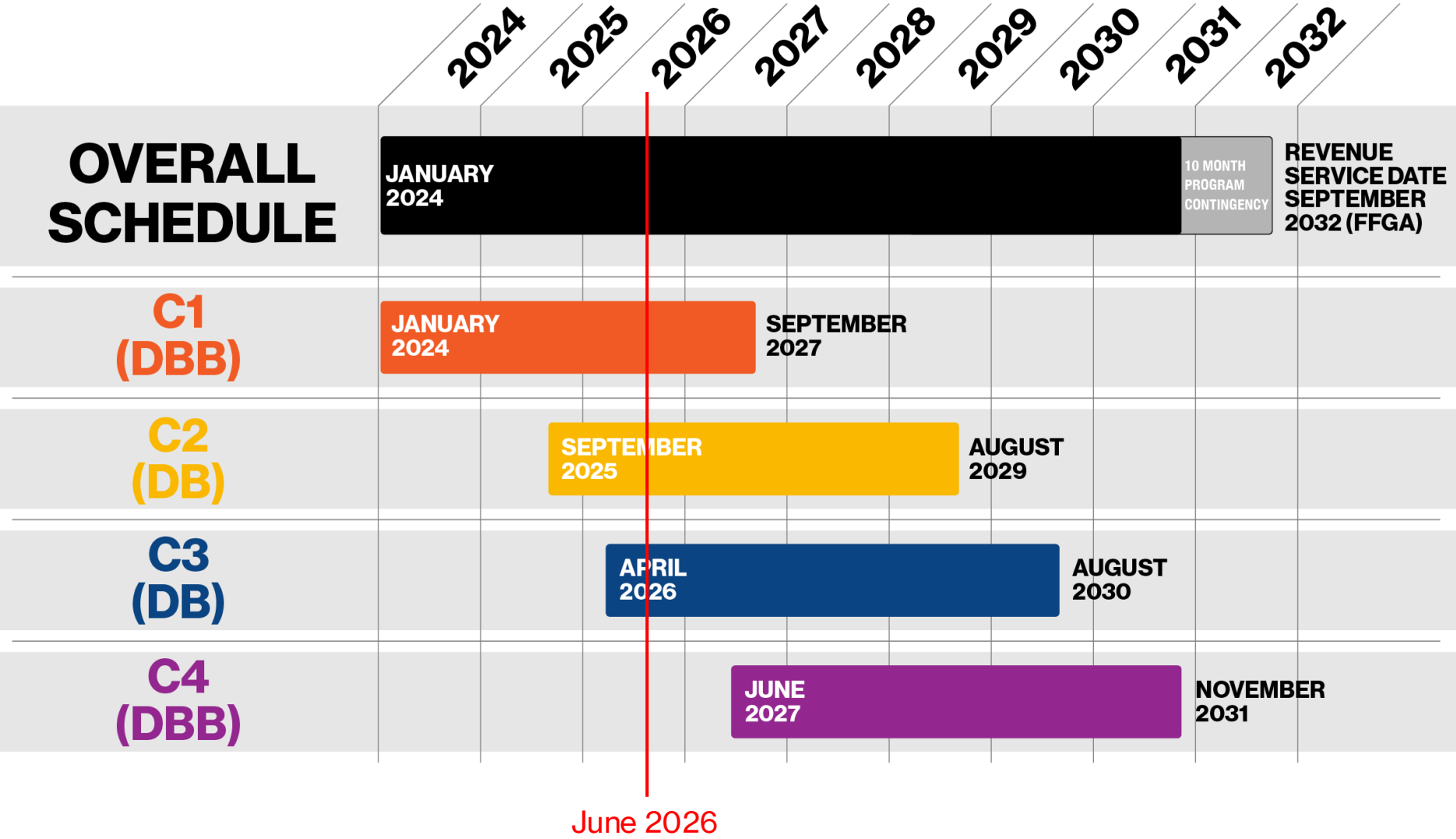
These meetings will offer project updates, discuss potential impacts and mitigations for that work, and:

- Receive feedback from committee members on the effectiveness of mitigations to date.
- Direct access to MTA and project level decision makers to raise questions and concerns brought to committee members by their respective audiences
- Be a forum for us to create and share new ways on how we can better conduct outreach

Project Alignment



Project Timeline



Second Avenue Subway Phase 2: Overview

As a lesson learned from Phase 1, the MTA has reduced the number of contracts in Phase 2 to four.



Subject to Change

Project Benefits



Time Savings:

East Harlem and Bronx residents who ride the Second Avenue Subway will benefit from reduced travel time, saving an estimated 20 minutes a day, 7.2 hours per month, adding up to 3.5 days per year.



Fully Accessible:

The new East Harlem stations will be built with fully accessible entrances—creating greater travel mobility for seniors and people of all abilities.



Travel Mobility:

The stations will also feature the latest in technological advancements, including cellular and Wi-Fi coverage throughout—and digital signage that provides real time information about train departures.



New Design:

Each station will be bright, comfortable, and modern, with low vibration tracks, and public art works that reflect the artistic culture of East Harlem.



Revitalized Streetscape:

The project will provide a revitalized surface streetscape complete with new sidewalks, trees, and public areas, enhancing Second Avenue as a vibrant commercial and pedestrian corridor in East Harlem.



A One-Seat Ride:

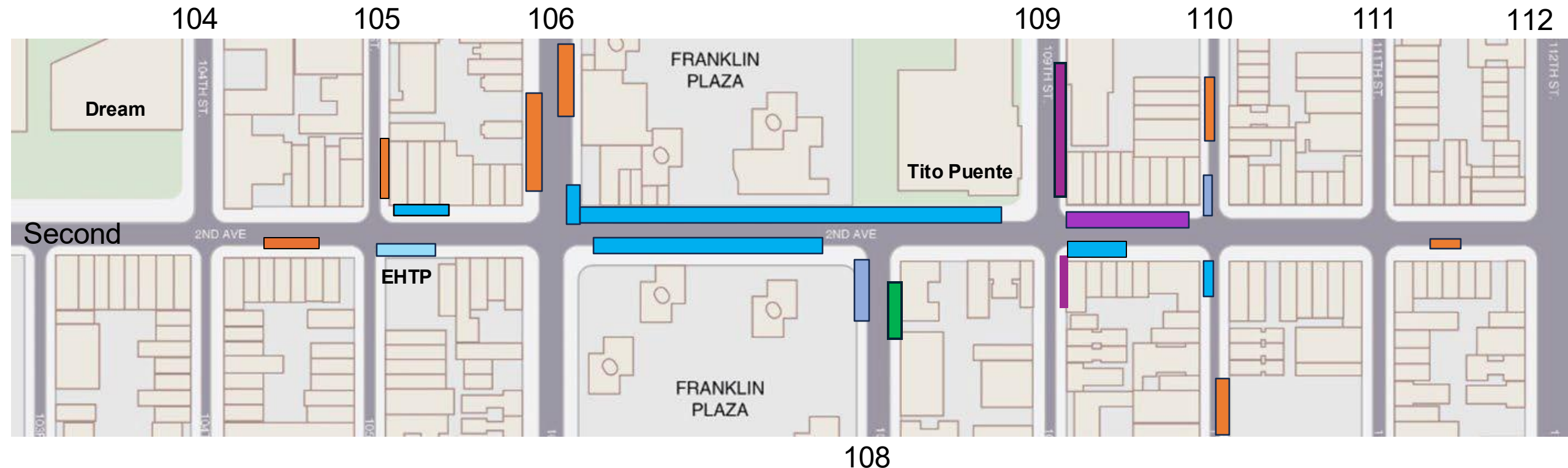
The Second Avenue Subway will be the only subway line to create a one-seat ride from East Harlem to West Midtown, Times Square, Chinatown, and Coney Island Brooklyn.

Concerns From Q1 Advisory Committee Meeting

1. Concern about 106 St and 107 St lighting conditions
 1. Lighting installed on 107 St
 2. Lighting installation scheduled for 106 St by supermarket
2. Concern about ADA accessibility stores in front of 106 St and 2 Av
 1. Temporary blacktop has been placed to ease the gradient.
 2. MPT is expected to be shifted by early July
3. Concern about TEA (Traffic Enforcement Agents) not doing their job
 1. The Project Team has spoken with NYPD about increased presence
4. Concern about Project and NYPD coordinating on issues
 1. The Project Team continues to coordinate with NYPD about quality-of-life concerns

Contract 1

Current MPT – Contract 1



Rev- June 23, 2026

C1: Schedule 2026

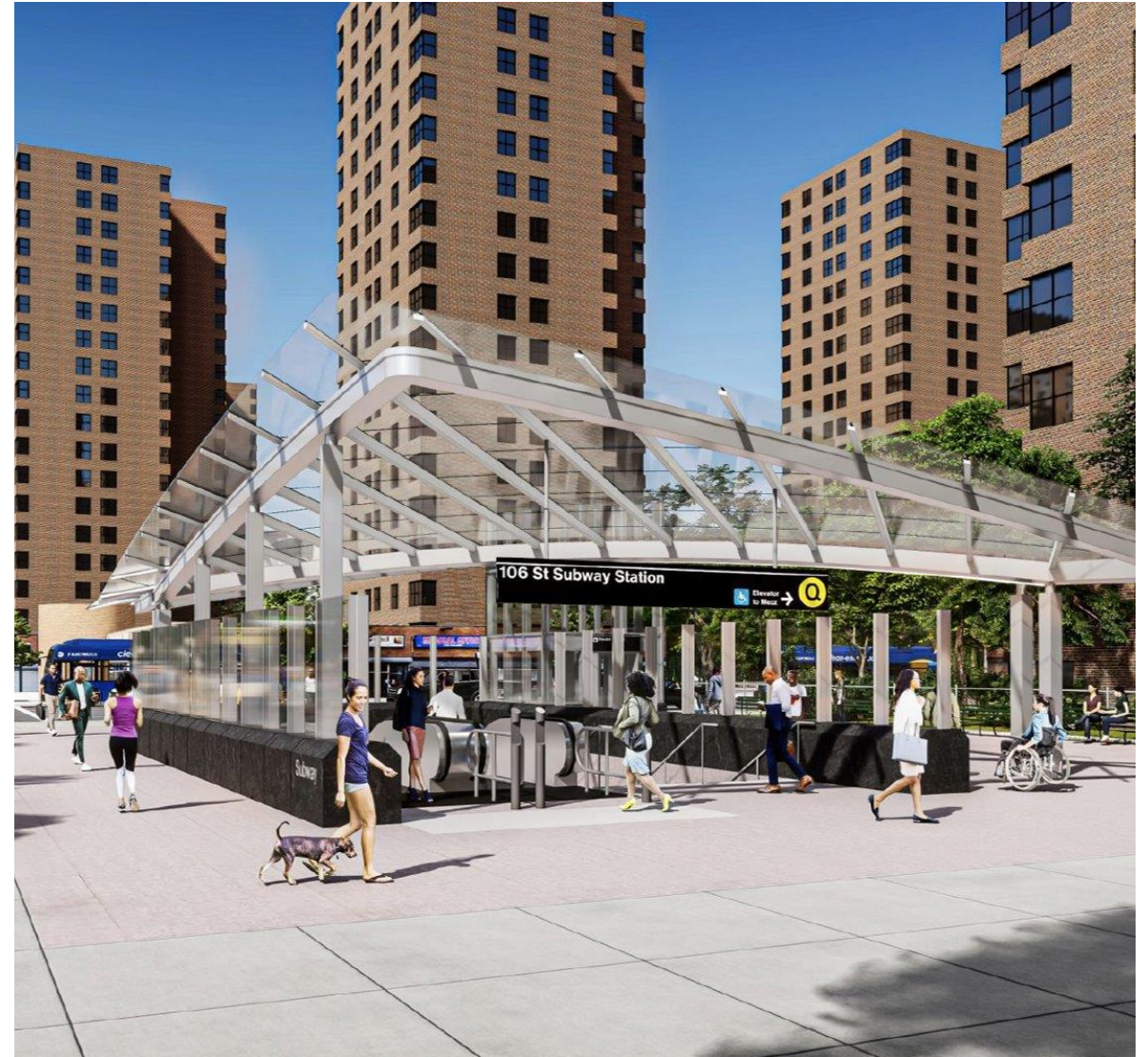
- **Building Work (underpinning + strengthening)**
Ongoing, estimated completion Q4 2026
 - Block 1659, west side of 2 Av between 109 and 110 St
 - Block 1655, west side of 2 Av between 105 and 106 St
- **Utility Relocations (electrical and gas work)**
Ongoing, estimated completion Q4 2026
 - East and west sides of 2 Av
- **Sewer Work**
Ongoing, estimated completion end of June 2026
 - West Side of 2 Av and 105 St
- **Trunk water Main Installation**
Estimated start late Q3, estimated completion Q1 2027
 - West Side of 2 Av and 105 St
- **Oil-O-Static Work Crossing**
Ongoing, estimated completion late Q3
 - 2 Av at 109 St

Contract 3

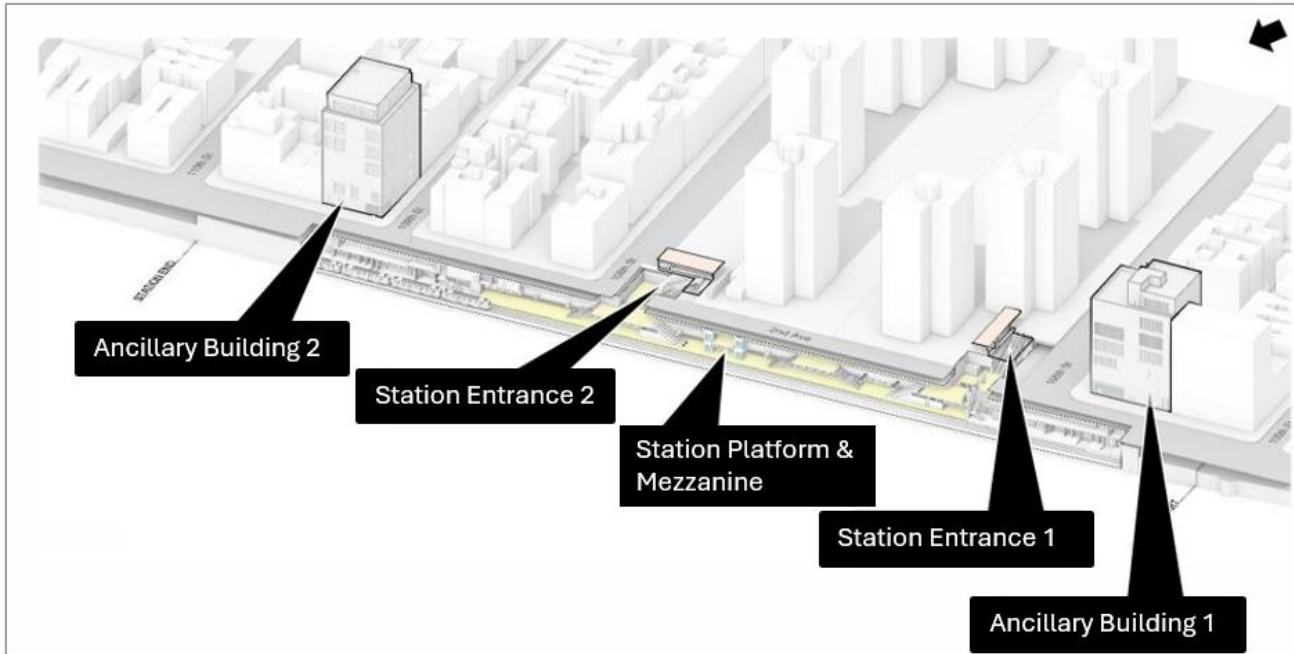
C3 Status and Highlights

MTA awarded Contract 3 in April to Skanska Walsh Traylor SAS2-C3 JV . Work started on June 15.

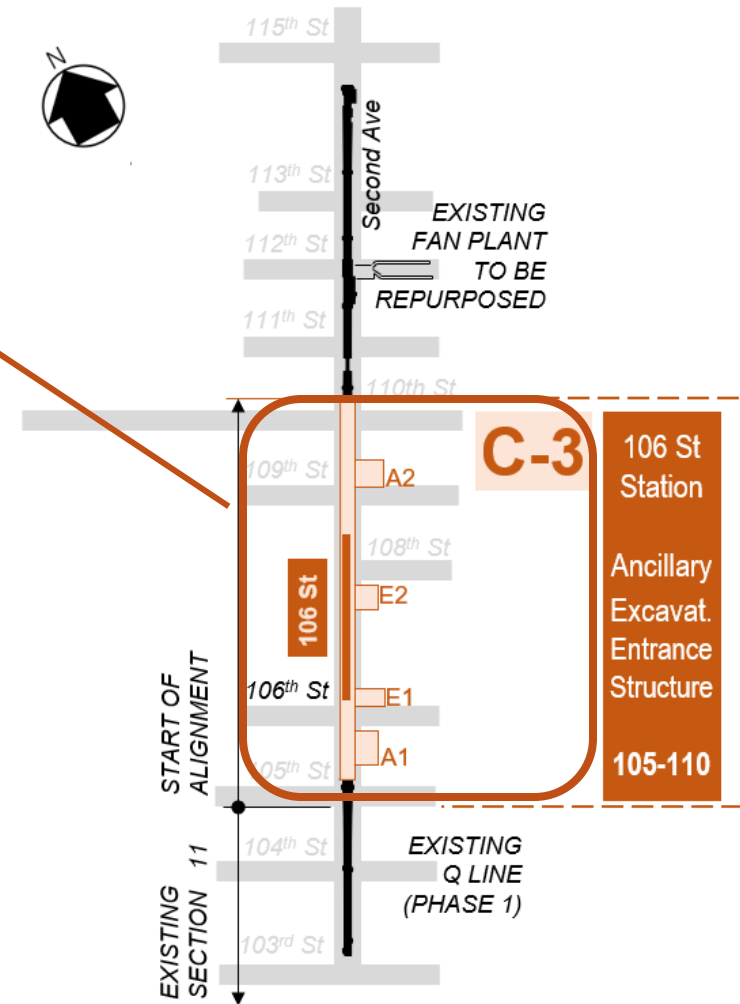
- ✓ On Schedule & On Budget
- ✓ All Properties Have Been Acquired
- ✓ Continuing Securing Access Agreements and started Relocations
- ✓ Project Management Team Has Already Mobilized
- ✓ Advancing Early Design Coordination With City Agencies



C3: Project Limits & Scope of Work



- Protect / support / relocate existing utilities
- Construction of the structural shell (exterior walls of the station) for the 106 St Station
- Entrances (2)
- Ancillaries (2) – SOE and Excavation Only
- Street & Utility Restoration



C3: Initial Work

Mobilization:

Entrance 1

- Setting up of the work area – June 15
- Tree removal – End of June
- Expand Work Zone – Mid-July

Entrance 2

- Setting up of the work area – TBD
- Expand Work Zone – TBD

Site Wide

- Site Investigation – End of June through August
- Survey – End of June



106 St Station Entrance Work Areas



Phasing – 6/15/26 to End of August 2026



Phasing – End of August 2026 to End of Q1 2027



Signage



Community Engagement

- Merchants
- Public Meetings
- Schools and PTAs
- Senior Centers
- Street Fairs
- Pop Up Events
- Community Organizations
- Elected Officials
- Community Leaders
- Property Owners
- Tenant Associations
- Co-op and Condo Boards



Community Outreach Contacts

MTA C&D

Joseph O'Donnell, Senior Director – Strategic Public Affairs

Project Management Team

Desiree Gazzo, PMC Outreach Coordinator
Yuki Zheng, PMC Outreach

East Harlem Community Collaborators

Hector Santana, Director of Outreach
Richard Harley, Sr Advisor Engagement 125th
Alex Zamudio, Construction Liaison 116th
Gregory Nyman, CIC Manager
Tashlima Lipi, Construction Liaison 106th
Fred Cannizzaro, Public Relations Specialist
Erica Pooran, Project Manager
Dani Kau, Graphics/Production

Contractor Outreach

Michelle Perez, Contract 1 – Community Outreach
Alejandra Cabrales, Contract 2 – Community Outreach
Aislinn Speranza, Contract 3 – Community Outreach



Second Avenue Subway Phase 2 Community Information Center

69 East 125th Street
212-722-3700
outreach@mtacd.org

24-hour Hotline
212-693-9520

Hours of Operation
Monday – Friday 9AM- 5PM

Questions?

Sign up for our E-Newsletter



Construction & Development