



Construction & Development

April 30, 2021

ADDENDUM NO. 2

Solicitation RK-23D/RK83

Design-Build Services for New Pedestrian Walkway and Fender Rehabilitation at the Robert F. Kennedy Bridge

Please be advised of the following additional information under the above referenced solicitation:

EOI Due Date: The Due Date for EOI submittals remains **Friday, May 21, 2021 at 3:30 p.m., local time.**

Conflict of Interest / Unfair Advantage (COI/UA): Proposers are reminded that the Authority will rely on the firms to identify a potential conflict of interest or unfair advantage and notify the Authority. In general, firms that performed design-related work for a project, including preparation of an RFP, may not be allowed to compete as part of the design-build team for the same project. The Authority may make exceptions on a case by case basis. If uncertain about whether a conflict or unfair advantage exists, firms should request a determination from the Authority, prior to submittal of their EOI, to John Weldon, the Designated Point of Contact for this solicitation, via e-mail at jweldon@mtabt.org.

EOI Information Meeting Registrants: Following this cover is a list of parties (firms, representatives, e-mail addresses) that registered to attend the April 30, 2021 EOI Informational Meeting.

EOI Information Meeting Presentation: Following the list of parties (firms, representatives, e-mail addresses) that registered to attend the April 30, 2021 EOI Informational Meeting is a copy of the slide deck regarding the project which was presented at the April 30, 2021 EOI Informational Meeting.

Please be governed accordingly in submitting your Proposal for this solicitation and acknowledge receipt of this Addendum 2 in your Proposal.

Sincerely,

A handwritten signature in blue ink, appearing to read "John R. Weldon".

John R. Weldon
Field Contract Manager

cc: Project Manager

REGISTRANTS TO RK-23D/RK83 EOI INFORMATIONAL MEETING HELD APRIL 30, 2021 AT 10:00 AM

FIRM	REPRESENTATIVE	CONTACT E-MAIL
A.G. Consulting Engineering, P.C.	Amit Guleria	aguleria@agceng.com
AI Engineers	Cagan Dizdar	cdizdar@aiengineers.com
AI Engineers	Erik Jarboe	EJarboe@aiengineers.com
AI Engineers	Maher Abdelqader	mabdel@aiengineers.com
AI Engineers	Rohit Pradhan	RPradhan@aiengineers.com
AI Engineers	Susannah Judd	sjudd@aiengineers.com
Bove Industries, Inc.	Michele Abreu	mabreu@boveindustries.com
Bove Industries, Inc.	Ralph Lapadula	RLapadula@boveindustries.com
Buckman Engineering	Brian Buckman	brian@buckmanengineering.com
C.A.C. Industries, Inc.	Alto Dogan	edogan@cacindinc.com
C.A.C. Industries, Inc.	Antonio Salas	asalas@cacindinc.com
C.A.C. Industries, Inc.	Byron Lopez	blopez@cacindinc.com
C.A.C. Industries, Inc.	Selcok Ucar	sucar@cacindinc.com
CCA Civil, Inc.	Vicken Bedian	bedian_vicken@ccacivil.us
COWI	Genaro Velez	gevz@cowi.com
COWI	Ryan Woodward	rnwd@cowi.com
DeFoe Corp.	August Vettorino	avettorino@defoecorp.com
D'Onofrio General Contractors Corp.	Anthony Macca	Anthony.Macca@donofriogc.com
D'Onofrio General Contractors Corp.	Lidia Hastings	Lidia@donofrio.biz
D'Onofrio General Contractors Corp.	Steve Zerges	Steve.Zerges@donofriogc.com
ECCO III Enterprises, Inc.	Jason Pawell	jpawell@eccoi.com
EnTech Engineers	George Sholy	gsholy@entech.nyc
EnTech Engineers	Mohammad Ullah	mullah@entech.nyc
Entuitive	David Douglas	Dave.douglas@entuitive.com
Fos Development Corp.	George Dinos	gdinos@fosgrp.com
GCCOM Construction Co., Inc.	Damir Plisic	dplisic@GCCOM.US
GCCOM Construction Co., Inc.	Jason Schrek	jschreck@GCCOM.US
GCCOM Construction Co., Inc.	Rafael Perez	rperez@GCCOM.US
Gilbane Building Company	Gregg Jenkinson	GJenkinson@GilbaneCo.com
Hatch, Ltd.	Damon Jericho	damon.jericho@hatch.com
Hatch, Ltd.	Joshua Nelson	joshua.nelson@hatch.com
Hatch, Ltd.	Saeid Rashidi	saeid.rashidi@hatch.com
Infinite Consulting Corp.	Chembil Kumar	CKumar@infiniteconsultingcorp.com
Infinite Consulting Corp.	Dean Angelakos	dangelakos@infiniteconsultingcorp.com
Infinite Consulting Corp.	Eric Hirani	EHirani@infiniteconsultingcorp.com
Infinite Consulting Corp.	Michael Debiak	MDebiak@infiniteconsultingcorp.com
Infinite Consulting Corp.	Thomas Reed	TReed@infiniteconsultingcorp.com
Infra Tech Engineering, LLC	Abid Ansari	aansari@infratechengineering.com
Infra Tech Engineering, LLC	Larry Naraysingh	Lnaraysingh@infratechengineering.com
Iovino Enterprises	Cory Mermer	cmermer@iovinoent.com
Jacobs	Ken Ko	Ken.Ko@jacobs.com
Jacobs	Maki Onodera	Maki.Onodera@jacobs.com
Jacobs	Tzvetomir Kotzev	Tzvetomir.Kotzev@jacobs.com
JT Cleary, Inc.	Carol Shobrook	C.Shobrook@JTCleary.com
JT Cleary, Inc.	James Cleary	J.Cleary@JTCleary.com
JT Cleary, Inc.	Lee Askenazy	L.Askenazy@JTCleary.com
JT Cleary, Inc.	Orrin Kastelijn	O.Kastelijn@JTCleary.com
Judlau Contracting, Inc.	Adria Torcellini	Adria.torcellini@ohlina.com
Judlau Contracting, Inc.	Adria Torcellini	adria.torcellini@gmail.com
Judlau Contracting, Inc.	Edward White	Ed.White@ohlina.com
Judlau Contracting, Inc.	Francisco Salazar	Francisco.Salazar@ohlina.com
Judlau Contracting, Inc.	Neville Bugwadia	neville.bugwadia@ohlina.com
Judlau Contracting, Inc.	Serhan Celik	Serhan.celik@ohlina.com

KC Engineering & Land Surveying, P.C.	Alyssa Watkins	awatkins@kcepc.com
KC Engineering & Land Surveying, P.C.	Evan Thomas	ethomas@kcepc.com
KC Engineering & Land Surveying, P.C.	Mohdjamil Yousef	jyousef@kcepc.com
KC Engineering & Land Surveying, P.C.	Raj Ravilla	raj.ravilla@kcepc.com
KC Engineering & Land Surveying, P.C.	Ram Kasturi	rkasturi@kcepc.com
Kiewit Infrastructure Co.	Visha Szumanski	Visha.Szumanski@kiewit.com
Kiewit Infrastructure Co.	Warren Howard	Warren.Howard@kiewit.com
KS Engineers, P.C.	Brian Anglin	banglin@kseng.com
KS Engineers, P.C.	George Assis	gassis@kseng.com
KS Engineers, P.C.	Jenny Lee	jlee@kseng.com
KS Engineers, P.C.	Kamal Shahid	info@kseng.com
KS Engineers, P.C.	Kelly Anderson	kanderson@kseng.com
KS Engineers, P.C.	Luigi Brasacchio	lbrasacchio@kseng.com
McLaren Engineering Group	Matthew McCarty	mmccarty@MGMcLaren.com
Michels Corporation	Brandon Stillo	bstillo@michels.us
Modjeski & Masters, Inc.	Blaise Blabac	bablabac@modjeski.com
MP Engineers & Architects	James Wilson	JWilson@mpengs.com
MP Engineers & Architects	Steven Panayi	Spanayi@mpengs.com
Navillus, Inc.	Mina Asaad	masaad@navillusinc.com
Navillus, Inc.	Peter Downes	pdownes@navillusinc.com
Navillus, Inc.	Zachary Schweter	zschweter@navillusinc.com
Parsons Transportation Group	Gerard Macanas	Gerard.Macanas@parsons.com
Parsons Transportation Group	Paul Blasko	Paul.Blasko@parsons.com
Parsons Transportation Group	Raul Carhuayano	Raul.Carhuayano@Parsons.com
Parsons Transportation Group	Seth Condell	Seth.Condell@parsons.com
Parsons Transportation Group	Sohee Yim	Sohee.Yim@Parsons.com
Posillico, Inc.	Paul Casazza	pecasazza@posillicoinc.com
Restani Construction Corp.	Emre Ersun	eersun@restani.com
Restani Construction Corp.	Firas Safa	fsafa@restani.com
Restani Construction Corp.	Kevin Neville	kneville@restani.com
Restani Construction Corp.	Yu Tongtao	hyu@restani.com
Schnabel Engineering	Michael Roscoe	MRoscoe@schnabel-eng.com
Schnabel Engineering	Sean O'Connell	soconnell@schnabel-eng.com
Simpson & Brown	Michael Quadagno	mquadagno@simpsonandbrown.com
Skanska USA Civil	David Kulak	Dave.Kulak@skanska.com
Skanska USA Civil	John Papagiannakis	John.Papagiannakis@skanska.com
Skanska USA Civil	John Raposa	John.Raposa@skanska.com
STV, Inc.	Ayman Shama	Ayman.Shama@stvinc.com
STV, Inc.	Craig Andrews	Craig.Andrews@stvinc.com
STV, Inc.	Michael Moskowitz	michael.moskowitz@stvinc.com
STV, Inc.	Sui-Ping Ko	siu-ping.ko@stvinc.com
T. Y. Lin International	Bala Sivakumar	bala.sivakumar@tylin.com
T. Y. Lin International	Kenneth Rozansky	kenneth.rozansky@tylin.com
T. Y. Lin International	Neil Porto	Neil.Porto@tylin.com
TMS – Littoral Group	Connor McKeon	connor@tms-waterfront.com
TMS – Littoral Group	Eleanor Beckwith	eleonor@indigoriver.com
Trevcon Construction Co., Inc.	Shane Beacom	sbeacom@trevcon.com
Tully Construction Co.	Daniel Scully	DScully@tullyenvironmental.com
Tully Construction Co.	Dee Philips	dphilips@tullyconstruction.com
Tully Construction Co.	Luis Figueiredo	lfigueiredo@tullyconstruction.com
Tully Construction Co.	Peter Mazza	MazzaMan@tullyconstruction.com
Tully Construction Co.	Peter Tully	Ptully@tullyconstruction.com
Tully Construction Co.	Thomas Tully	Ttully@tullyconstruction.com
Urban Engineers of New York, D.P.C.	James Bilella	jabilella@urbanengineers.com
Urban Engineers of New York, D.P.C.	Oscar Bustos	ofbustos@urbanengineers.com
Urban Engineers of New York, D.P.C.	Ryan Matthews	rmatthews@urbanengineers.com
Walsh Construction Co.	Daniel Vandersteen	Dvandersteen@walshgroup.com
Walsh Construction Co.	Gabriel Israel	gisrael@walshgroup.com
WSP USA, Inc.	Ronald Paproski	Ronald.Paproski@wsp.com
Yu & Associates	Peter Yu	pyu@yu-associates.com



Construction & Development

RK-23D / RK-83 D-B HRLS PEDESTRIAN RAMP & FENDER UPGRADES

APRIL 30, 2021

RK-23D/RK-83 HRLS Pedestrian Ramp & Fender Upgrades

Scope of Work:

- DB new Pedestrian Ramp from HRLS north Walkway to future Manhattan Greenway Harlem River Park.
- HRLS Fender System and Bridge Pier Rehabilitation

Project Benefits:

- Restore ADA compliant access from HRLS North Walkway to City Streets.
- Upgrade Fender System to latest AASHTO Guidelines and Maintain SOGR

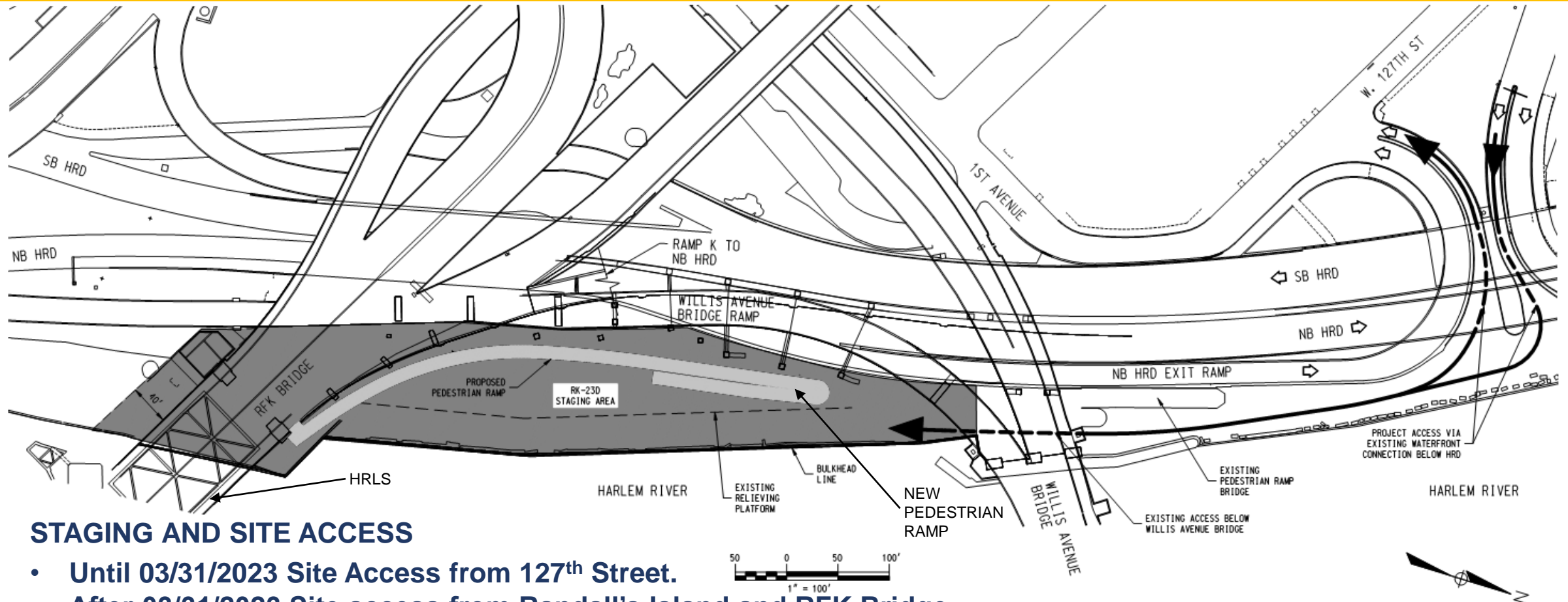
Planned Award: December 2021

Duration: 24 months total with 3/31/2023 milestone for land-based work

Contract Type: Design-Build



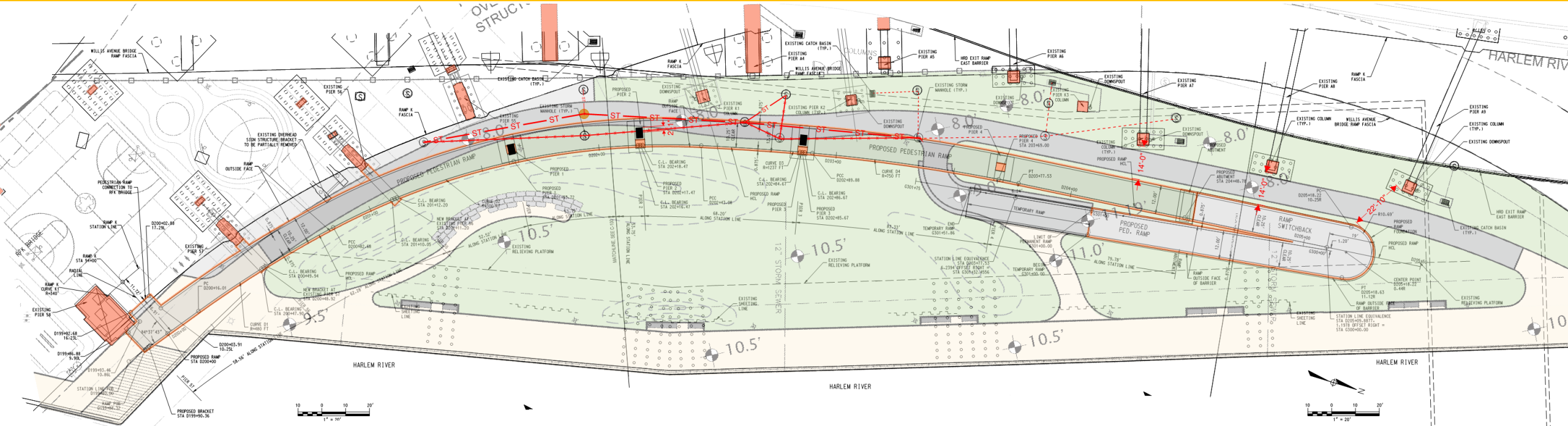
RK-23D/RK-83 HRLS Pedestrian Ramp & Fender Upgrades



STAGING AND SITE ACCESS

- Until 03/31/2023 Site Access from 127th Street.
- After 03/31/2023 Site access from Randall's Island and RFK Bridge.
- No land-based work in Manhattan waterfront area after 3/31/2023.
- Coordination with the NYC EDC project performing relieving platform reconstruction from RFK Bridge to points north of Willis Ave. EDC contractor will be performing both marine work and land based work.

RK-23D/RK-83 HRLS Pedestrian Ramp & Fender Upgrades



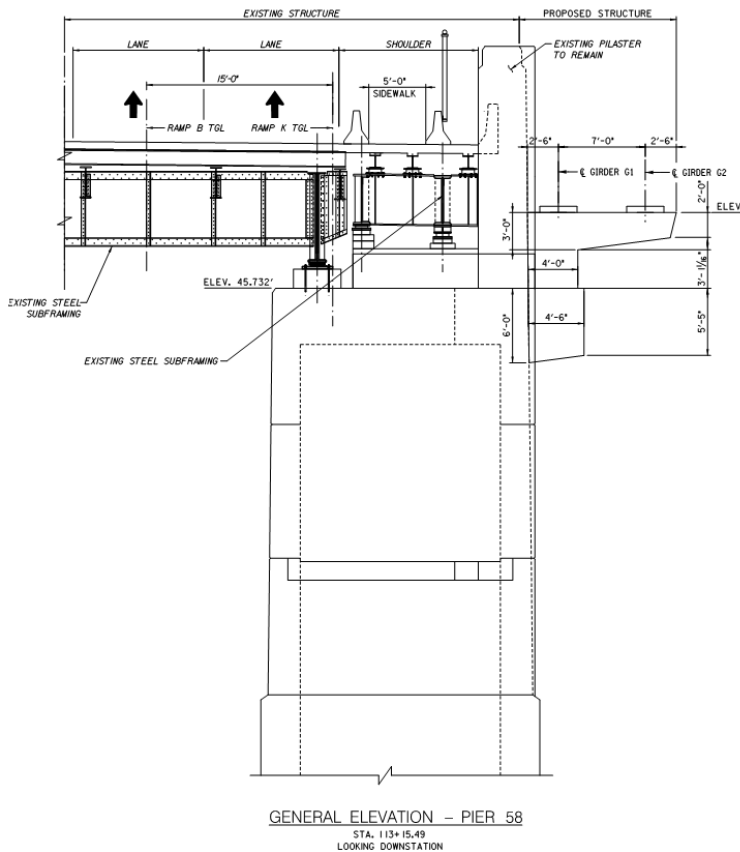
PEDESTRIAN RAMP ALIGNMENT

- Alignment is generally set as it is coordinated with park layout.
- Minimum clearances from existing structural elements will be defined to allow for future park path and maintenance of surrounding structures.
- Structural support from combination of new concrete brackets off existing piers, new hammerhead piers and fill structure supported by deep foundation system.
- Lower segment of the switchback will need to be constructed over a segment of existing relieving platform to remain in place.
- Touchdown to be at grade elevation coordinated with parks layout, which is approximately 2ft+ higher than existing grade.

Business to consist of downports connected to existing storm drainage system

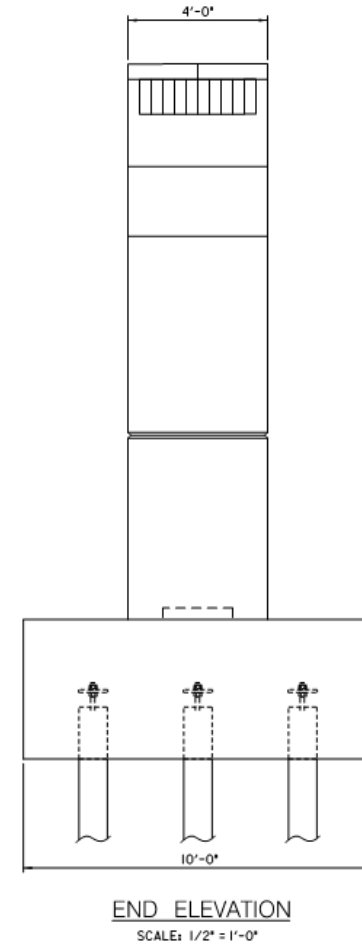
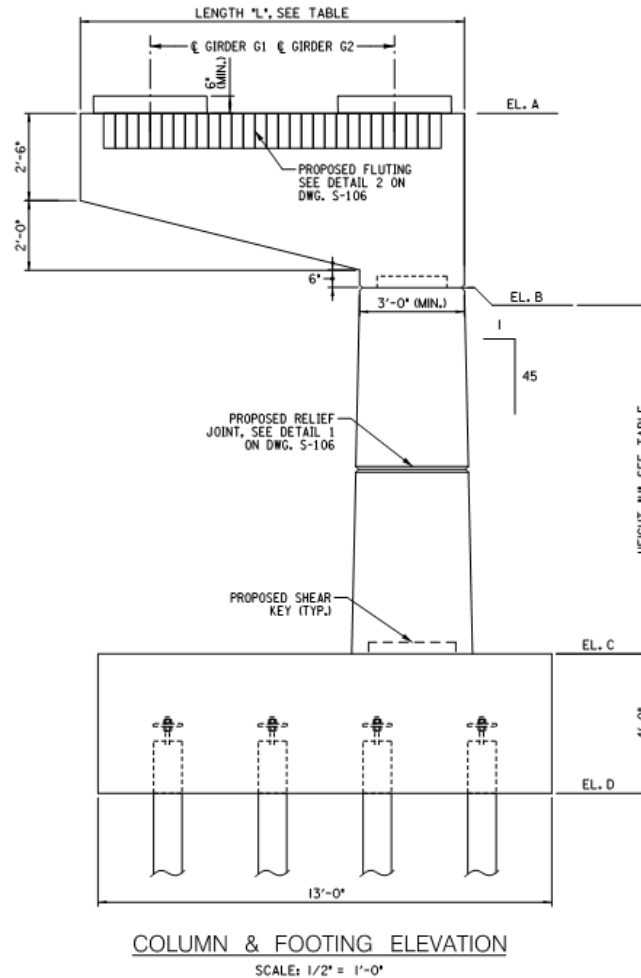
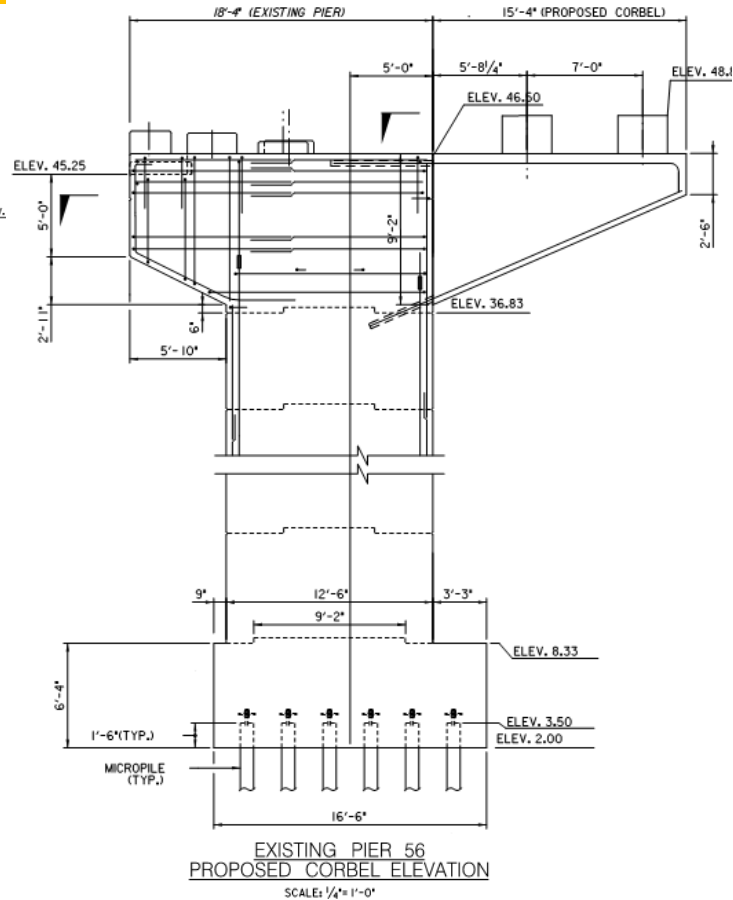
- _____

RK-23D/RK-83 HRLS Pedestrian Ramp & Fender Upgrades

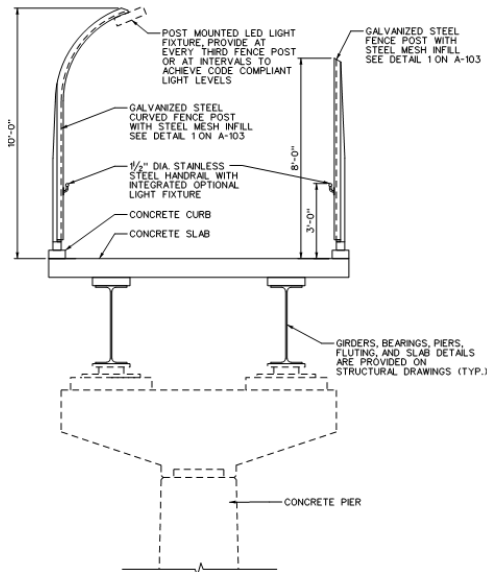


PEDESTRIAN RAMP STRUCTURE

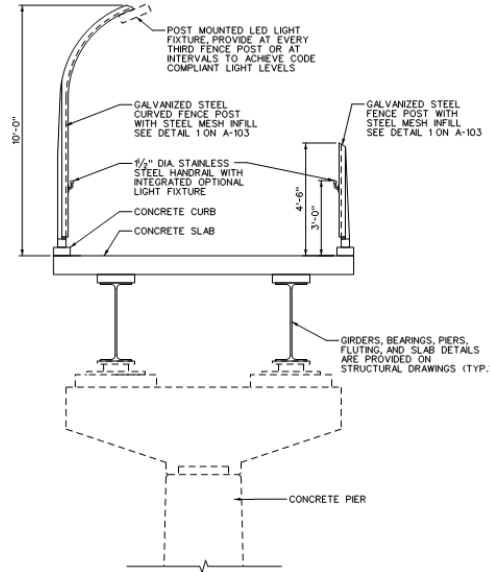
- Cantilever at piers 56, 57 and 58.
- New piers supporting Pedestrian Ramp.
- Pile foundations for piers and switchback.
- Wall finishes to complement surrounding structures, and aesthetic elements such as pier cap fluting to complement RFK bridge structure to be part of VQP



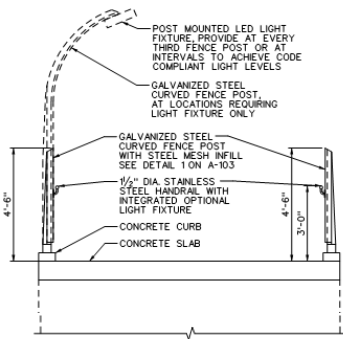
RK-23D/RK-83 HRLS Pedestrian Ramp & Fender Upgrades



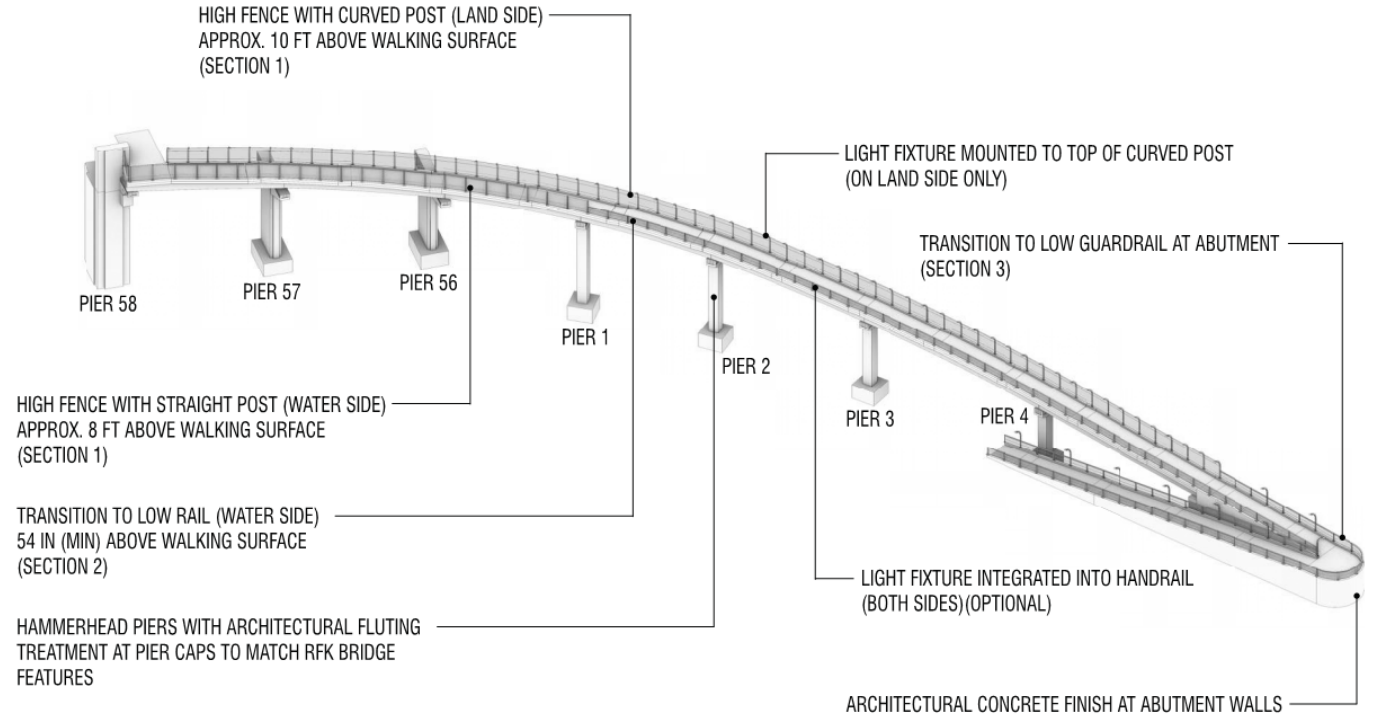
SECTION 1 - TOP OF RAMP



SECTION 2 - MIDDLE OF RAMP

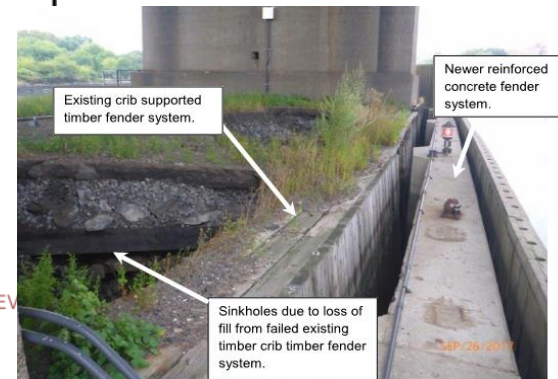
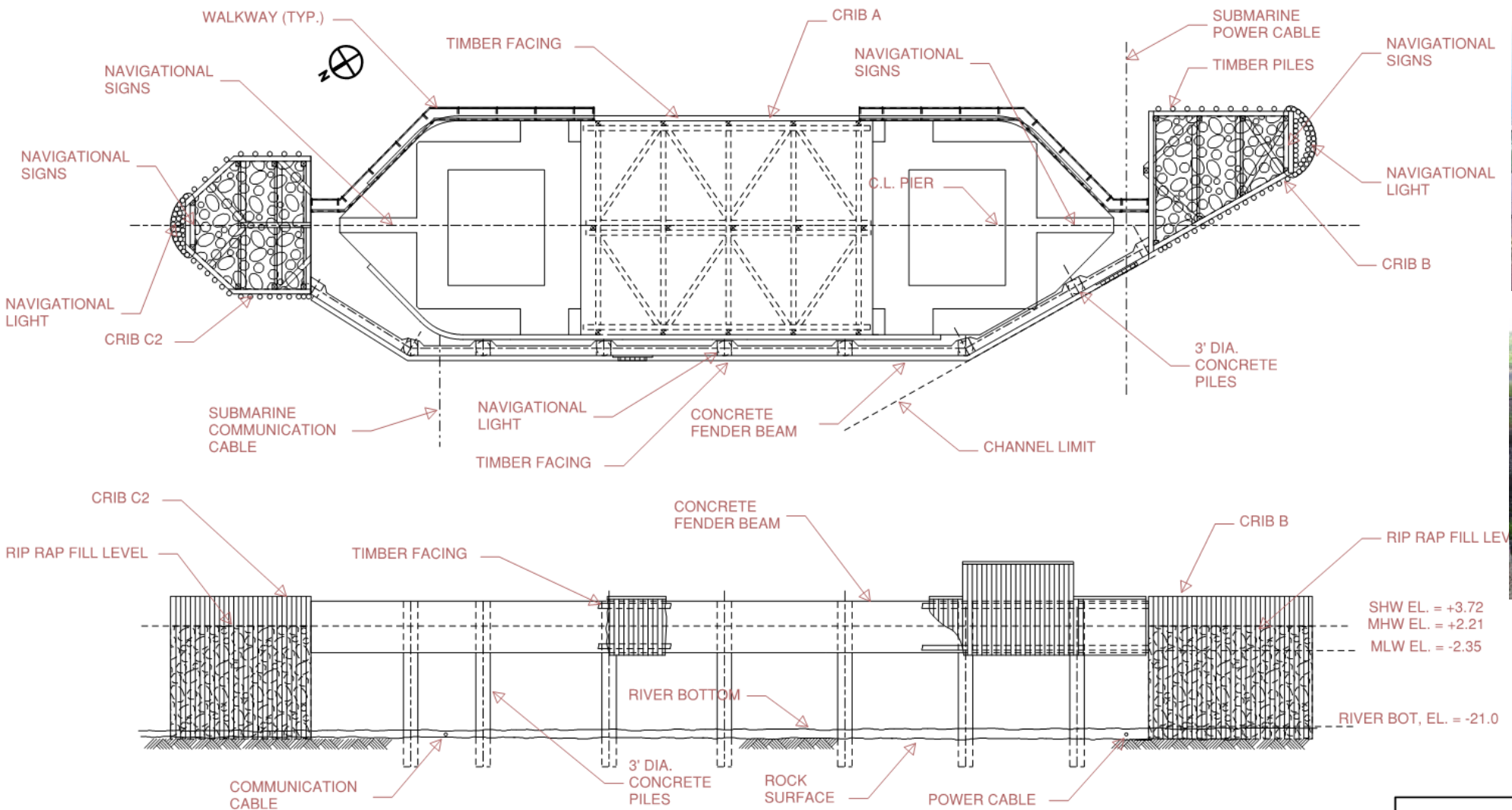


SECTION 3 - BOTTOM OF RAMP



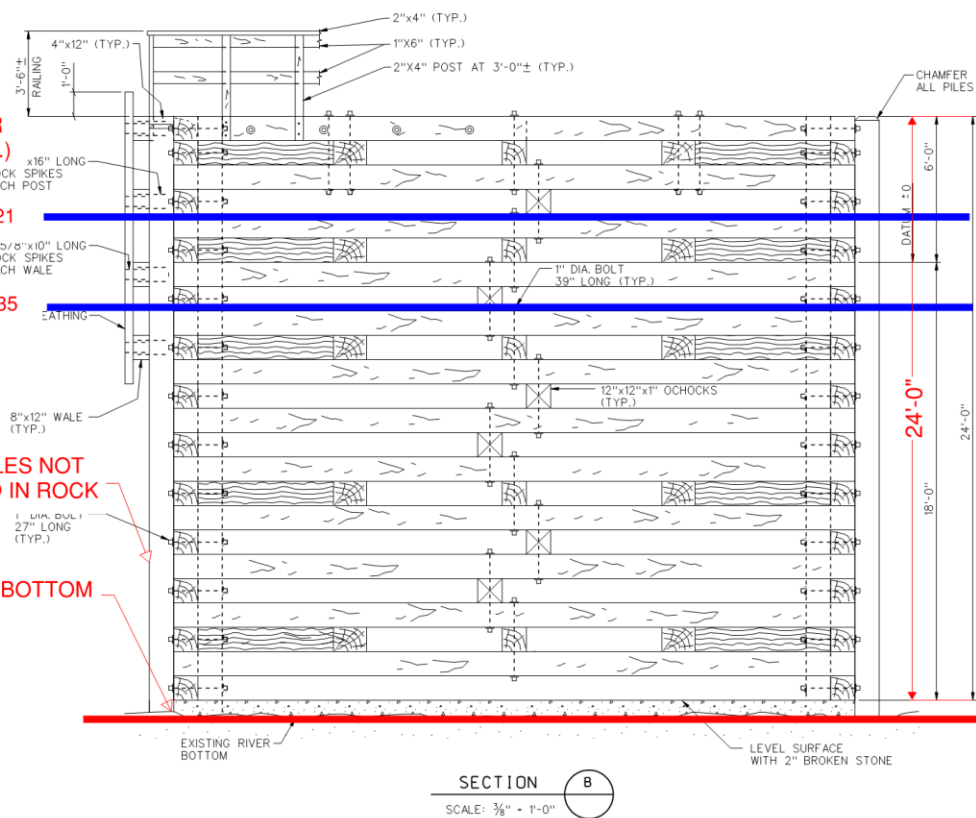
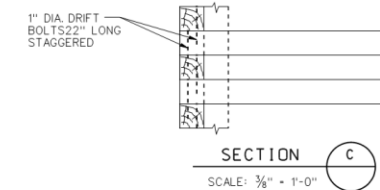
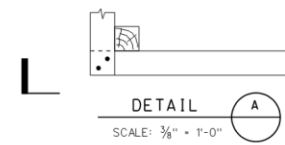
- **Min. 10 FT wide ADA compliant ramp for pedestrians and bicycles.**
- **Fence Height and Materials.**
- **Lighting Type.**
- **Wall Finishes.**

RK-23D/RK-83 HRLS Pedestrian Ramp & Fender Upgrades

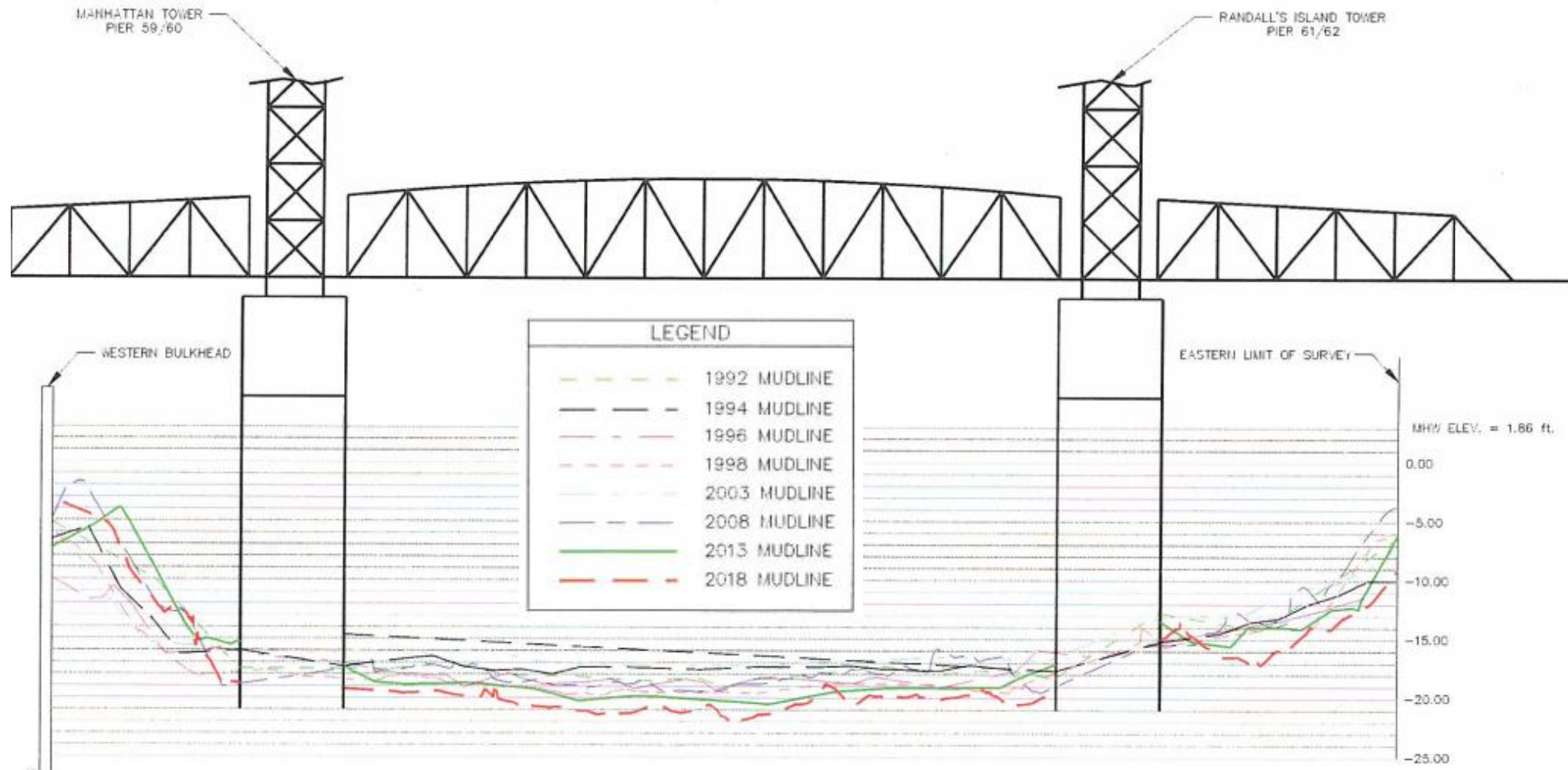


- Tower piers are surrounded by a fender system of several elements for pier protection.

CONCEPTUAL



RK-23D/RK-83 HRLS Pedestrian Ramp & Fender Upgrades

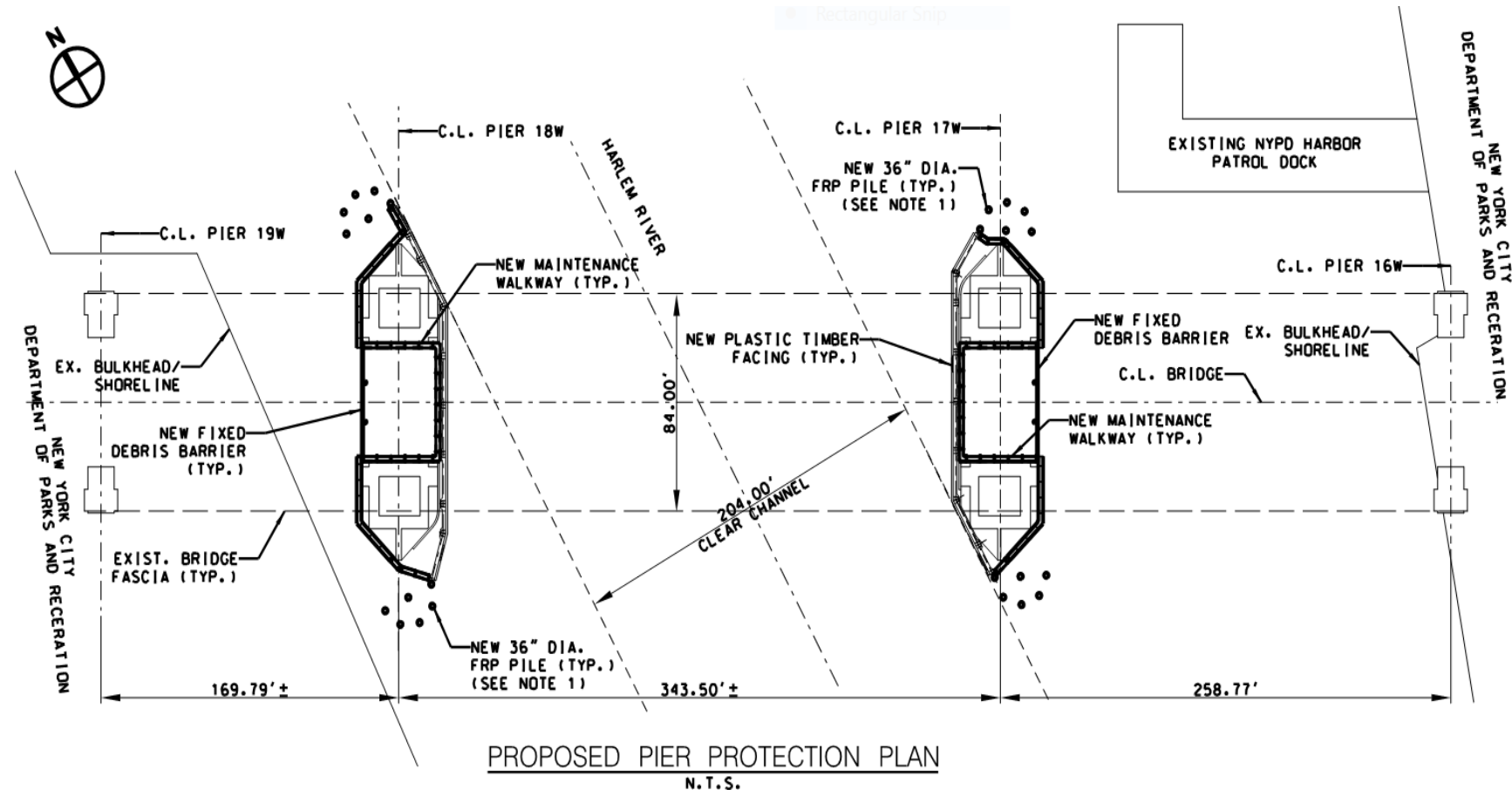


Elevation at Bridge Centerline

RK-23D/RK-83 HRLS Pedestrian Ramp & Fender Upgrades

Fender Rehab Scope of Work:

- Replacement of the end cribs with new FRP piles
- Secure end of existing concrete fender beam to a new FRP pile.
- Full replacement of all fender boards
- Remove existing cribs located between the bridge piers
- Installation of a fixed debris barrier between the bridge piers
- Replacement of the catwalks
- New navigation lighting and new signage
- Accent lighting of HRLS tower piers.
- HRLS bridge tower and approach pier repair and waterproofing



Channel Width = 204 FT
Length of Lift Truss Span = 310 FT

RK-23D/RK-83 HRLS Pedestrian Ramp & Fender Upgrades



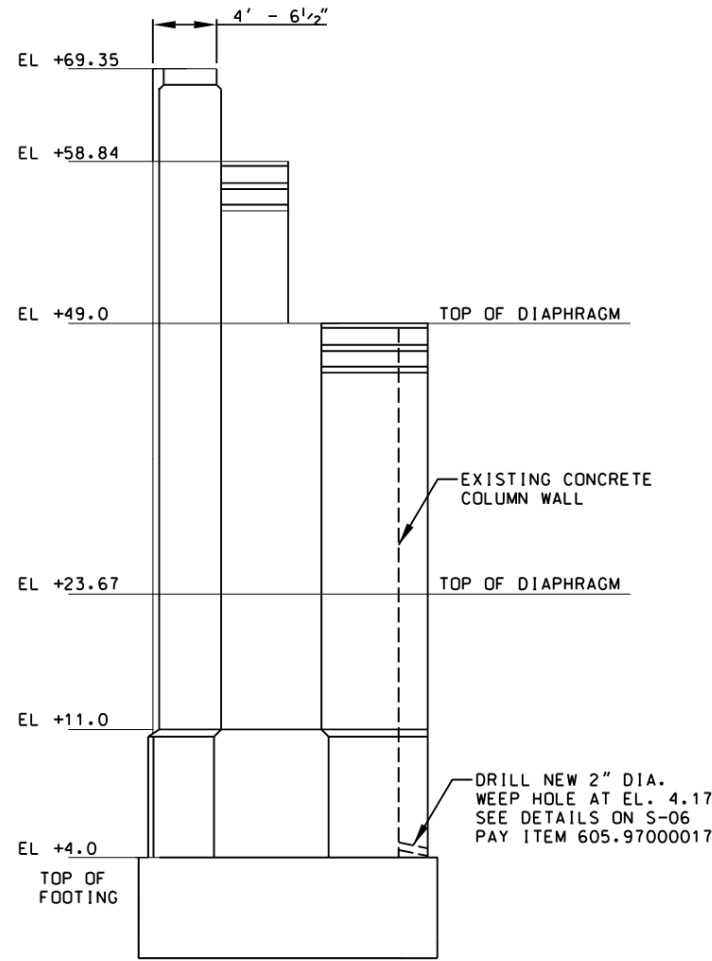
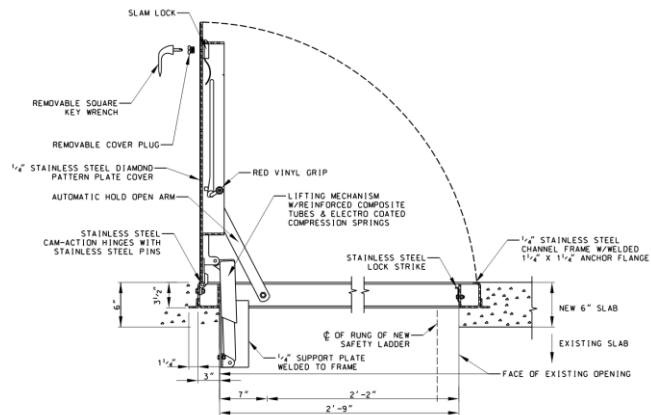
- **Fender Board Materials.**
- **Marine Signs and Lights Compliance**
- **Pier Waterproofing**
- **Accent Lighting System**



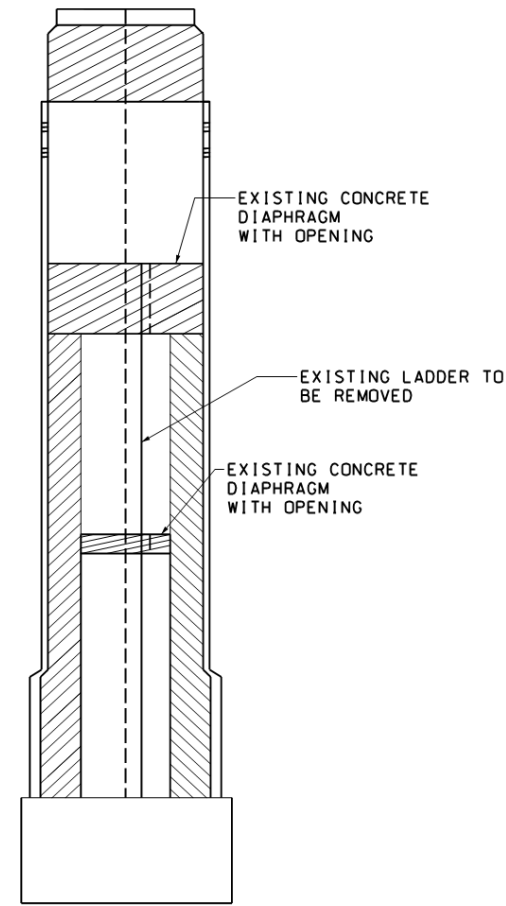
RK-23D/RK-83 HRLS Pedestrian Ramp & Fender Upgrades

Major Maintenance Work:

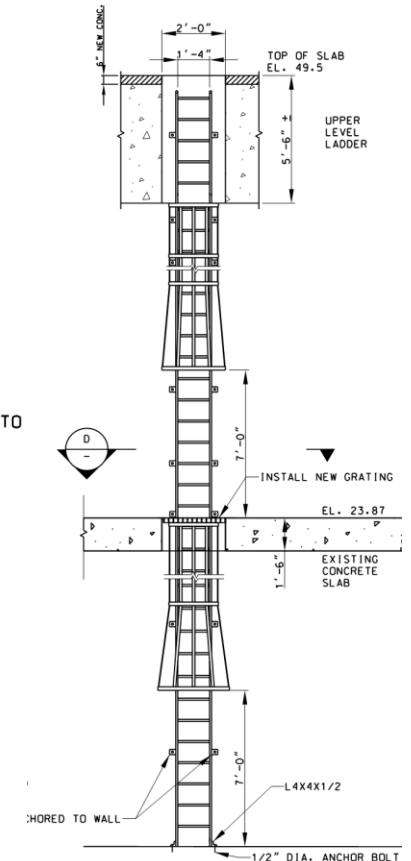
- Hollow pier columns water ponding mitigation
- Ladder replacement at piers 58 and 63.
- Local pier repair
- Waterproofing



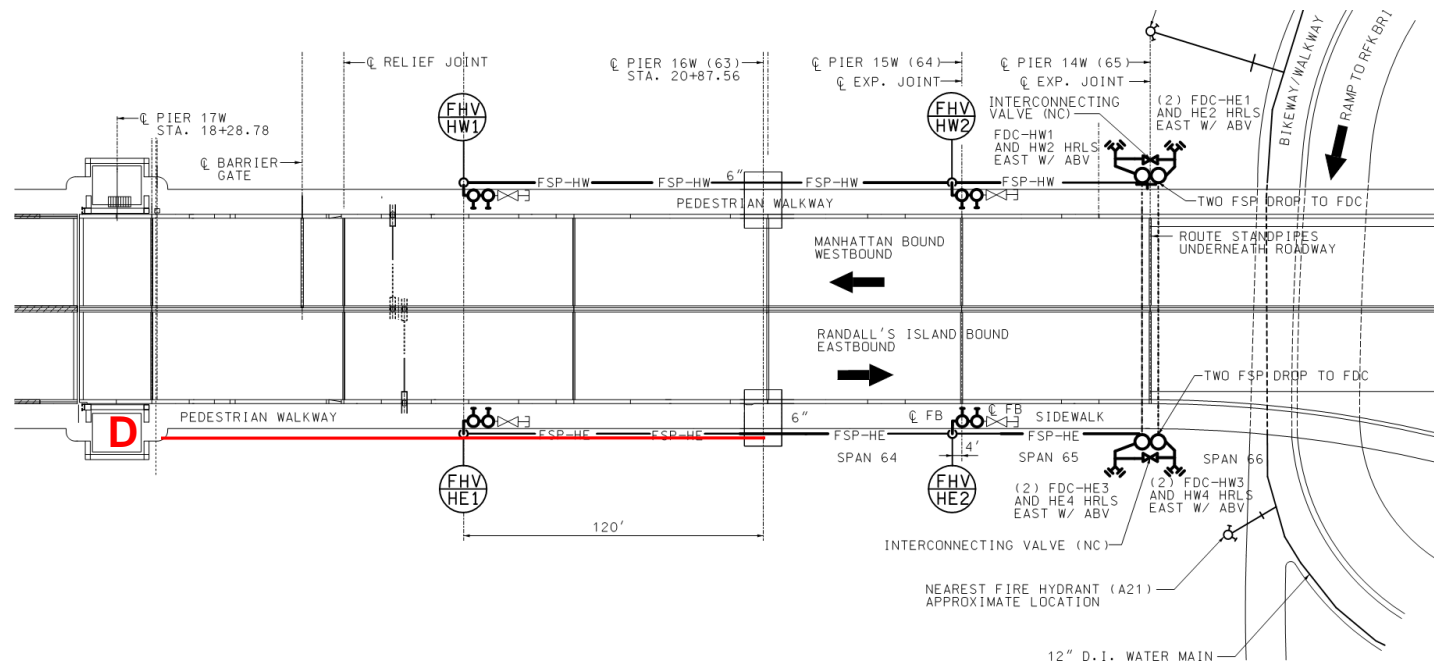
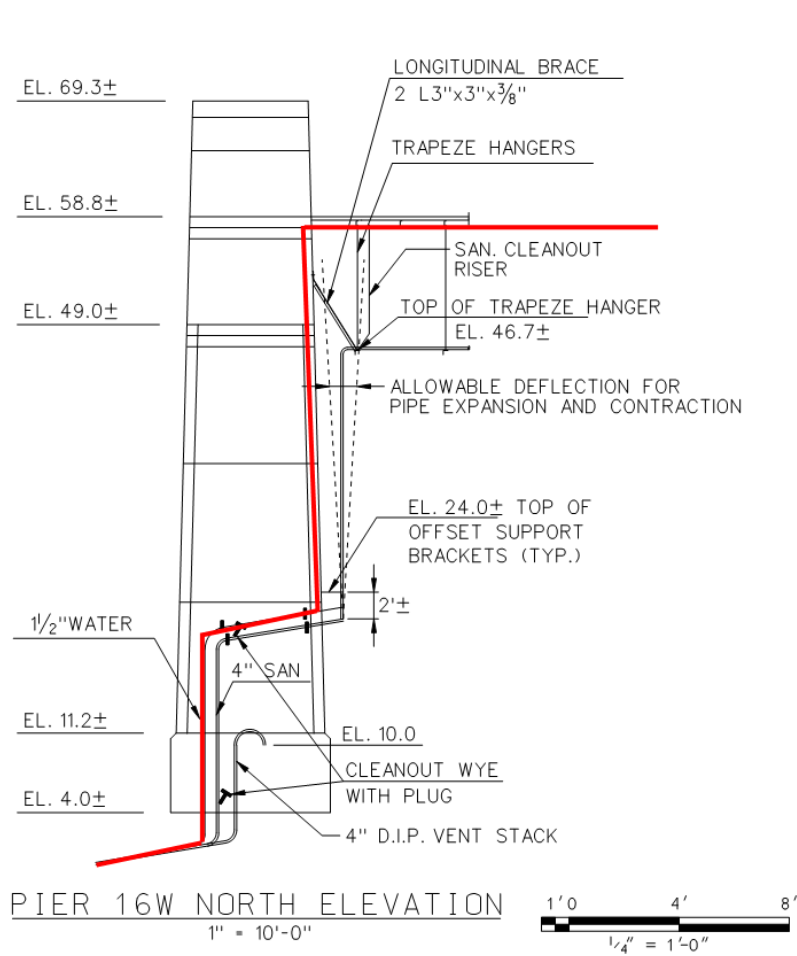
A ELEVATION
- NOT TO SCALE



B SECTION
- NOT TO SCALE



RK-23D/RK-83 HRLS Pedestrian Ramp & Fender Upgrades



Major Maintenance Work:

- Replace damaged water pipe and insulation
- Remove non-functioning booster pump.